



ADEQUATE FUEL IS KEY TO ACHIEVING

PEAK PERFORMANCE...

Adequate distribution of surfactant in the lungs is key to effectively treat the lungs of very premature infants with, or at risk for, RDS.

- **Uniform surfactant distribution throughout the small airways and alveoli of a tiny infant is an important goal in treating RDS.¹**

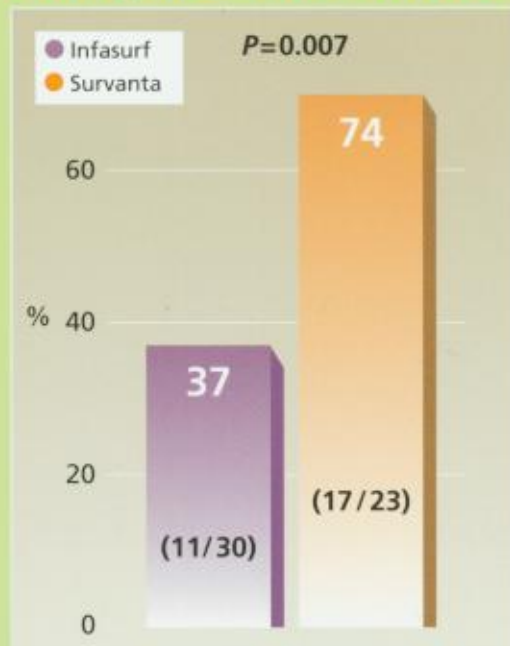
Compare doses for a 600-g infant:



Survanta (4 mL/kg):	2.6 mL
Infasurf (3 mL/kg):	1.8 mL
Curosurf (2.5 mL/kg/initial):	1.6 mL
(1.25 mL/kg/repeat):	0.8 mL

Depending on the product, each dose will be divided into either 2 or 4 aliquots.

Compare survival to discharge in infants <600 g birth weight²



- Prevention arm of head-to-head study, with 374 infants ≤ 29 weeks' gestation and < 1250 g birth weight
- Although Survanta infants weighed significantly less at entry, survival was better in the < 600 g infants.
- 17 of 23 Survanta-treated infants survived, compared to 11 of 30 Infasurf-treated infants ($P=0.007$).
- "Survanta infants required more days of intermittent mechanical ventilation and oxygen supplementation, primarily because of the survival of those < 600 g at birth."
- "No significant differences in the incidence of adverse events, survival to 36 weeks' postmenstrual age without the need for oxygen supplementation or dosing complications."

A history of efficacy speaks volumes

A product is measured by the volume of its successes. Our successes speak volumes:

Over 1 million doses administered*

Over 600,000 infants treated†

#1 surfactant in the U.S.†

Our history confirms,
Survanta is safe and effective.



SURVANTA[®]
(beractant)
intratracheal suspension
bovine pulmonary surfactant

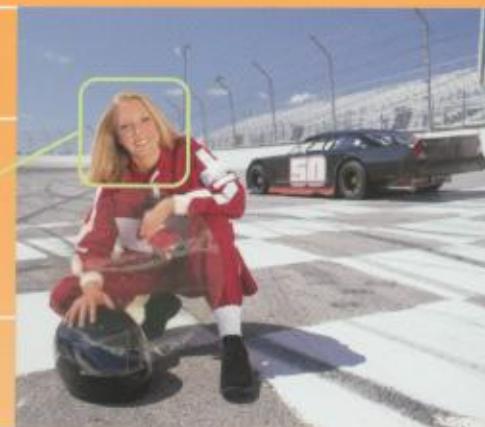
After a rocky start from a weak position, Mollie, a high school sophomore, has the **confidence of a winner.**

Mollie, then



Mollie, now

As you can see, her development is **right on track** and includes something that can't come fast enough for most teenagers: driving.



References:

1. Jobe AH: Surfactant treatments: Instillations and aerosolization. *Hot Topics in Neonatology* 1992.
2. Bloom BT, Kattwinkel J, Hall RT, et al: Comparison of Infasurf (calf lung surfactant extract) to Survanta (beractant) in the treatment and prevention of respiratory distress syndrome. *Pediatrics* 1997 ;100 :31-38. Chart reproduced by permission of *Pediatrics*.

* More infants treated by hospitals nationally than any other surfactant, IMS DDD Lung Surfactant Market Purchases July 1991 through February 2004. On file, Ross Marketing Research.

† More vials of Survanta purchased by hospitals nationally than any other surfactant. IMS America DDD Audit 12 months ending February 2004.

Infasurf[®] (calfactant) and Curosur[®] (poractant alfa) are not made or distributed by Abbott Laboratories.

Please see full prescribing information.

SURVANTA CAN RAPIDLY AFFECT OXYGENATION AND LUNG COMPLIANCE. During controlled clinical trials, the most commonly reported adverse experiences were associated with the dosing procedure: Transient bradycardia 11.9% of doses; oxygen desaturation 9.8% of doses; ETT reflux, fewer than 1% of doses.

ROSS

ROSS PRODUCTS DIVISION
ABBOTT LABORATORIES INC.
COLUMBIUS, OHIO 43215-1724

*A proven
record of
performance*



SURVANTA[®]

(beractant)

intratracheal suspension

bovine pulmonary surfactant USP