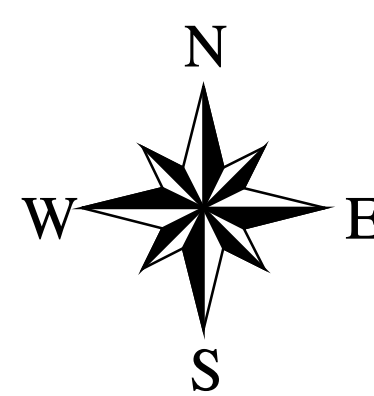
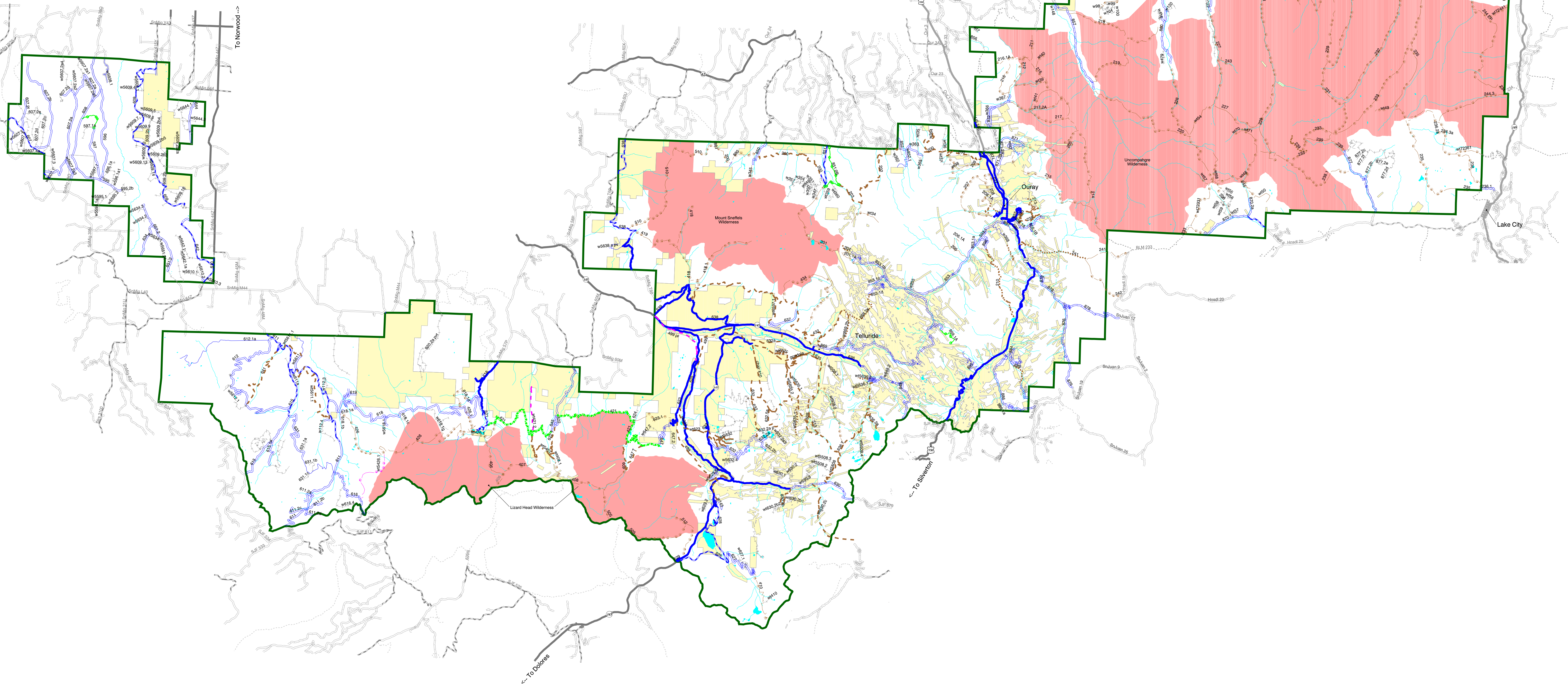


Uncompahgre National Forest Travel Plan Decision, March 2002 Mountain Division

Route Type	Allowed Uses
Administrative Use	Only Authorized Travel
Decommissioned Route	None
Passenger Car	All vehicles licensed for highway use, includes: Passenger vehicles, high clearance vehicles, four-wheel drive vehicles, some motorcycles. Also allowed: mountain bikes, horse/pack animals, foot travel. [NOTE: ATVs are not licensed vehicles and are prohibited.]
Passenger Car & Non-licensed Vehicles	Passenger vehicles, high clearance vehicles, four-wheel drive vehicles, ATVs, motorcycles, mountain bikes, horse/pack animals, foot travel
High Clearance Vehicle	High clearance vehicles, four-wheel drive vehicles, ATVs, motorcycles, mountain bikes, horse/pack animals, foot travel
Four-wheel Drive Vehicle	Four-wheel drive vehicles, ATVs, motorcycles, mountain bikes, horse/pack animals, foot travel
All Terrain Vehicle (ATVs)	ATVs, motorcycles, mountain bikes, horse/pack animals, foot travel
Motorcycle	Motorcycles, mountain bikes, horse/pack animals, foot travel
Mountain Bike	Mountain bikes, horse/pack animals, foot travel
Horse/pack animal	Horse/pack animals, foot travel
Foot	Foot travel

- Transportation System Route Types**
- Administrative Use Only
 - Decommissioned
 - Passenger Car
 - Passenger Car & non-licensed vehicles
 - High Clearance Vehicle
 - Four-wheel Drive Vehicle
 - All Terrain Vehicle
 - All Terrain Vehicle Proposed
 - Motorcycle
 - Motorcycle Proposed
 - Mountain Bike
 - Mountain Bike Proposed
 - Horse
 - Horse Proposed
 - Foot

- Forest Boundary
 - Special Areas
 - Land Ownership
 - National Forest
 - Non-forest
 - Water Bodies
 - Perennial Streams
 - Ponds, Lakes, Reservoirs
 - Off Forest Routes
 - Paved Highway
 - Improved, Gravel
 - Improved, Dirt
 - Dirt 4WD
 - Trail
- Off Forest routes are shown for information only, and do not reflect USFS decisions.



5 0 5 10 15 Miles

Information on this map spatially represents the decision for the Uncompahgre National Forest Travel Plan. Features shown on this map were developed from sources of differing accuracy and scale. The Forest Service may update, correct or modify GIS data as better information becomes available. Such modifications are intended only to improve accuracy of mapping and will not alter the decisions portrayed.

The U.S. Department of Agriculture (USDA) prohibits discrimination in all its programs and activities on the basis of race, color, national origin, sex, religion, age, disability, political beliefs, sexual orientation, or marital or family status. That of prohibited bases apply to all programs. Persons with disabilities who require alternate means for communication of program information (Braille, large print, audiotape, etc.) should contact USDA's TARGET Center at (202) 735-2000 (voice and TDD).

To file a complaint of discrimination, write USDA Director, Office of Civil Rights, Room 326-W, Wildlife Building, 1400 Independence Avenue, SW, Washington, DC 20250-9410 or call (202) 735-5964 (voice and TDD). USDA is an equal opportunity employer.