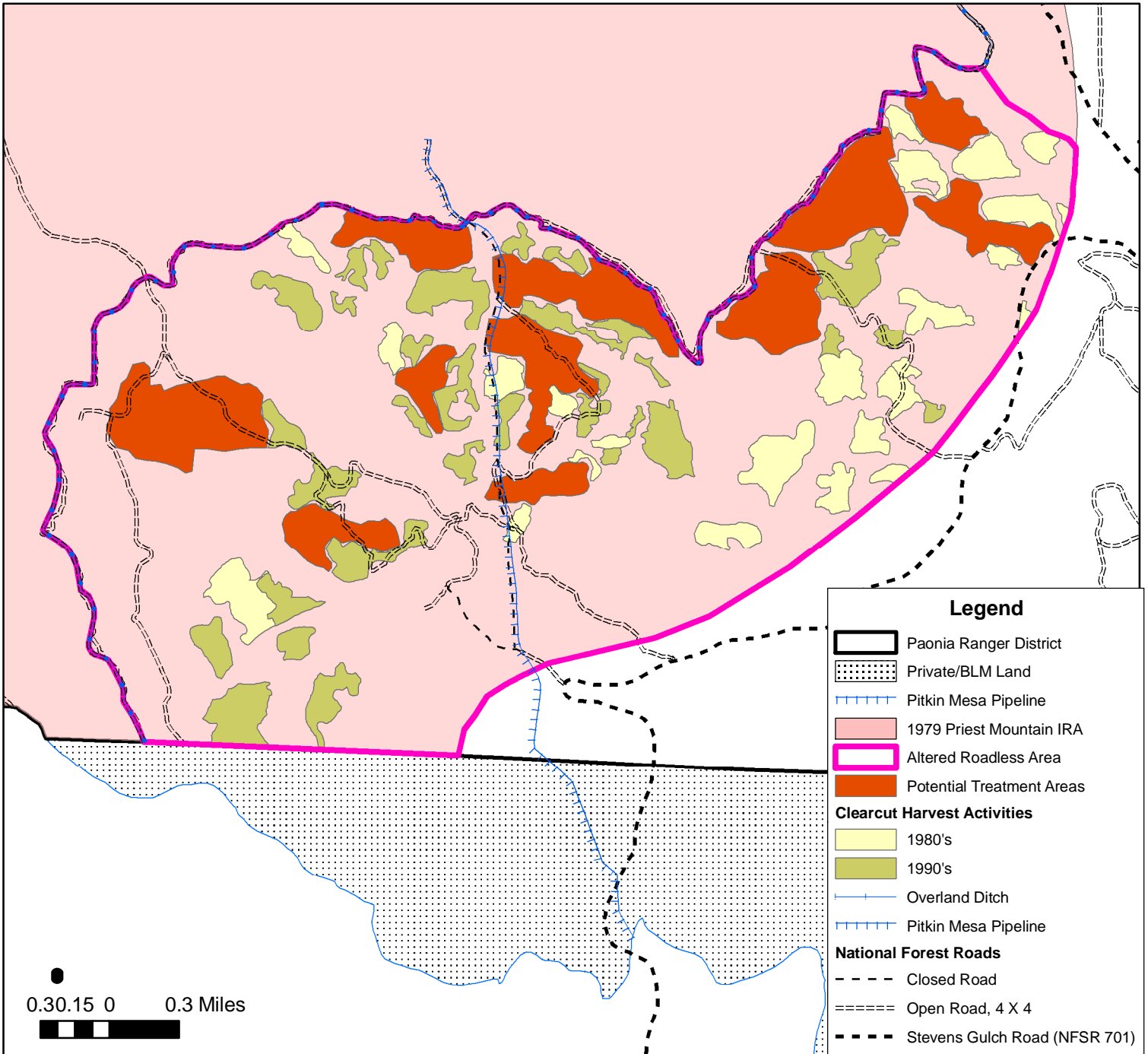


Terror Creek Applied Silvicultural Assessment

Map 4: Altered Roadless Area



Legend

- Paonia Ranger District
- Private/BLM Land
- Pitkin Mesa Pipeline
- 1979 Priest Mountain IRA
- Altered Roadless Area
- Potential Treatment Areas

Clearcut Harvest Activities

- 1980's
- 1990's
- Overland Ditch
- Pitkin Mesa Pipeline

National Forest Roads

- Closed Road
- Open Road, 4 X 4
- Stevens Gulch Road (NFSR 701)

ATTENTION

The Forest Service is currently directed to manage lands within 1979 Inventoried Roadless Areas (IRAs) according to the 2001 Roadless Rule. Under the Rule, harvest activities may occur only in the substantially altered portions of IRAs. The Terror Creek Applied Silvicultural Assessment proposes to treat areas within Priest Mountain IRA that are substantially altered due to road construction, timber harvest, water development and/or water transmission. No road construction or road reconstruction will occur within any portion of Priest Mountain IRA.

This product is reproduced from geospatial information prepared by the U.S. Department of Agriculture, Forest Service. GIS data and product accuracy may vary. They may be developed from sources of differing accuracy, accurate only at certain scales, based on modeling or interpretation, incomplete while being created or revised, etc. Using GIS products for purposes other than those for which they were created, may yield inaccurate or misleading results. The Forest Service reserves the right to correct, update, modify, or replace, GIS products based on new inventories, new or revised information, and if necessary in conjunction with other federal, state or local public agencies or the public in general as required by policy or regulation. Previous recipients of the products may not be notified unless required by policy or regulations. For more information, contact GMUG National Forest at 970-874-6600.