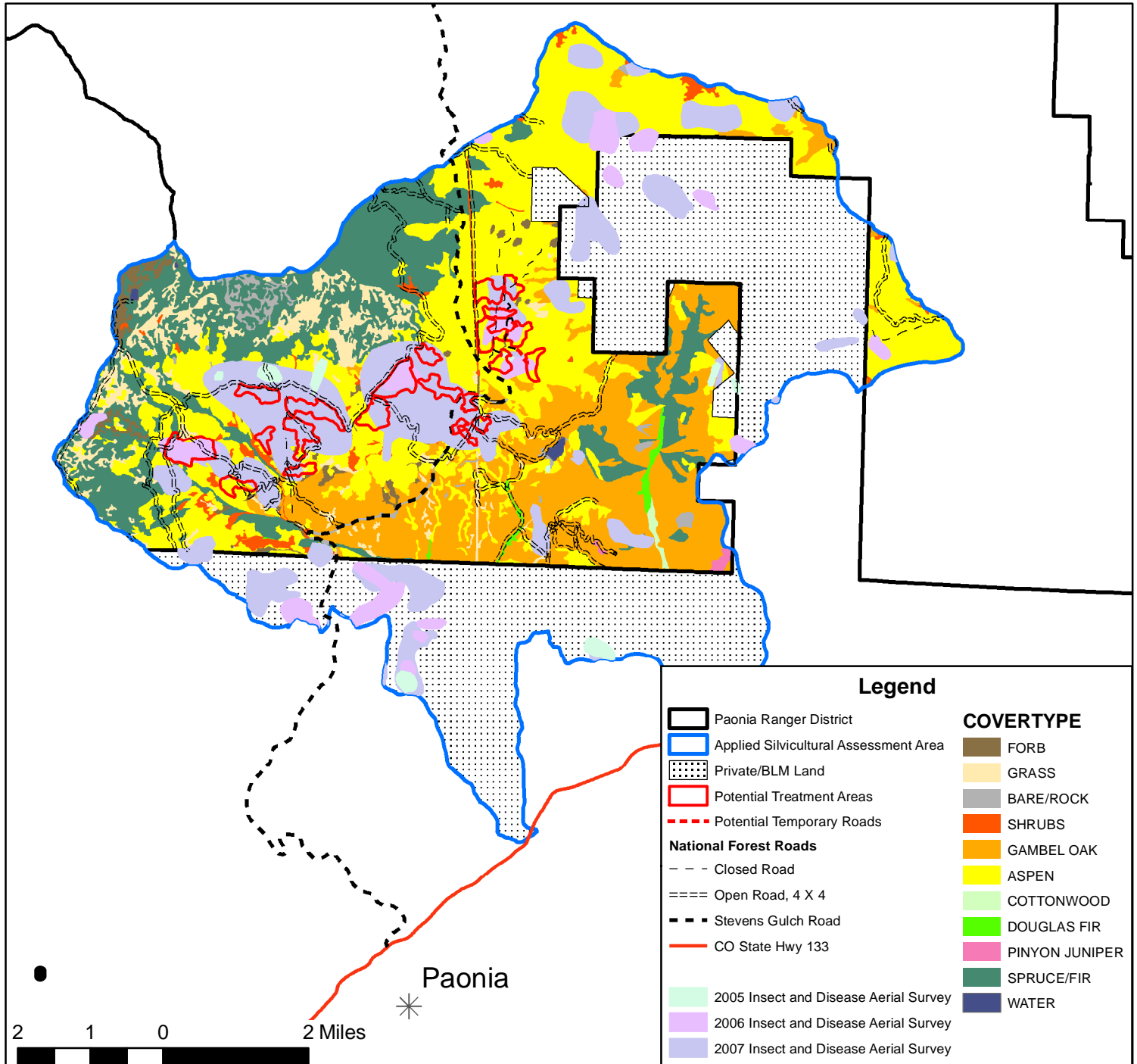


Terror Creek Applied Silvicultural Assessment

Map 2: Potential Treatment Areas



ATTENTION:

Due to the nature of aerial surveys, this map should only be used as a partial indicator of insect and disease activity and should be validated on the ground for actual location and casual agent. Shaded areas show locations where tree mortality or defoliation was apparent from the air. However, intensity of damage is highly variable and not all trees in shaded areas are dead or defoliated.

This product is reproduced from geospatial information prepared by the U.S. Department of Agriculture, Forest Service. GIS data and product accuracy may vary. They maybe: developed from sources of differing accuracy, accurate only at certain scales, based on modeling or interpretation, incomplete while being created or revised, etc. Using GIS products for purposes other than those for which they were created, may yield inaccurate or misleading results. The Forest Service reserves the right to correct, update, modify, or replace, GIS products based on new inventories, new or revised information, and if necessary in conjunction with other federal, state or local public agencies or the public in general as required by policy or regulation. Previous recipients of the products may not be notified unless required by policy or regulations. For more information, contact GMUG National Forest at 970-874-6600.

Sudden Aspen Decline Acreage

Aerial Survey Year	Forest Service Lands	Private Lands	TOTAL
2005	123	97	220
2006	637	531	1,168
2007	4,382	1,287	5,669