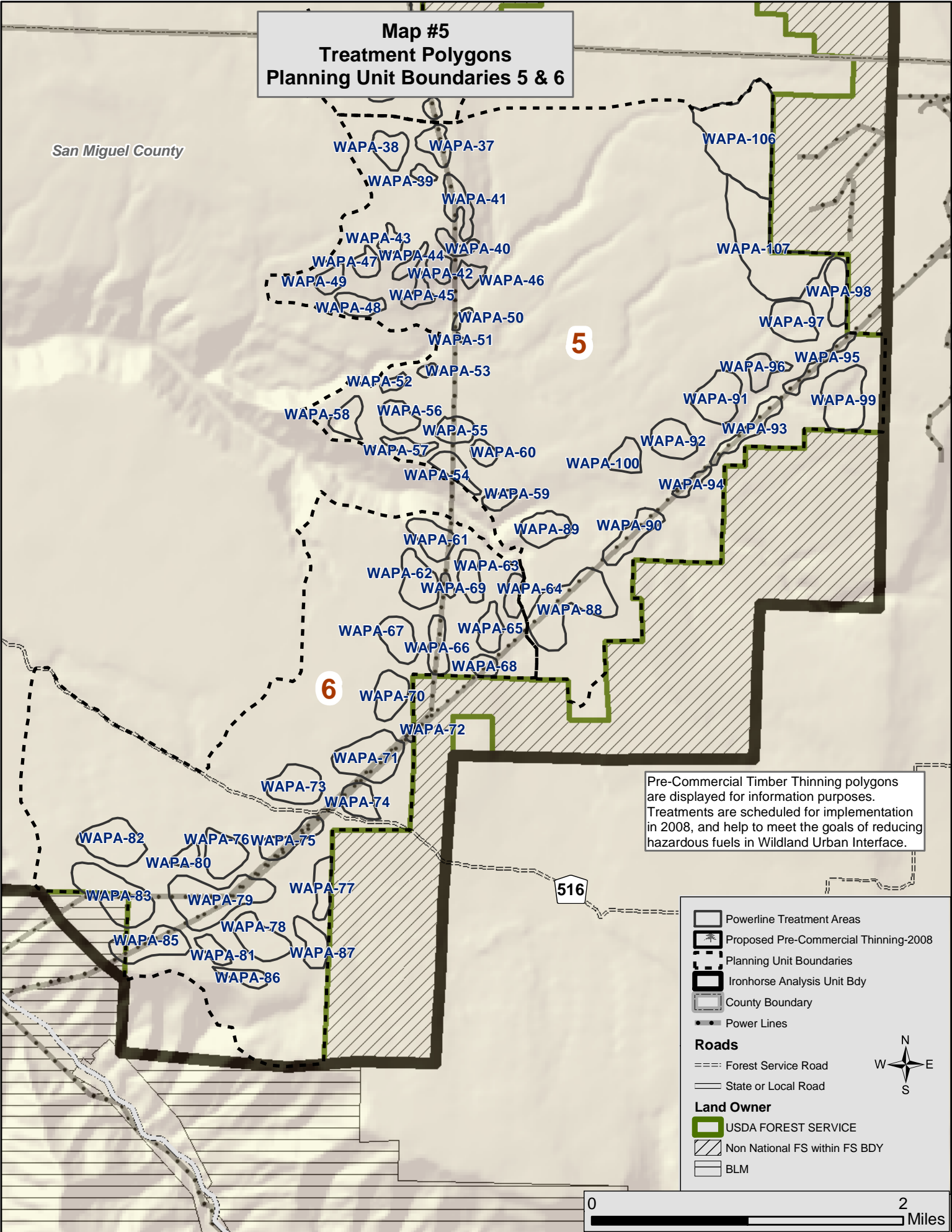


# Map #5 Treatment Polygons Planning Unit Boundaries 5 & 6

San Miguel County



5

6

Pre-Commercial Timber Thinning polygons are displayed for information purposes. Treatments are scheduled for implementation in 2008, and help to meet the goals of reducing hazardous fuels in Wildland Urban Interface.

516

- Powerline Treatment Areas
- Proposed Pre-Commercial Thinning-2008
- Planning Unit Boundaries
- Ironhorse Analysis Unit Bdy
- County Boundary
- Power Lines
- Roads**
  - Forest Service Road
  - State or Local Road
- Land Owner**
  - USDA FOREST SERVICE
  - Non National FS within FS BDY
  - BLM



0 2 Miles