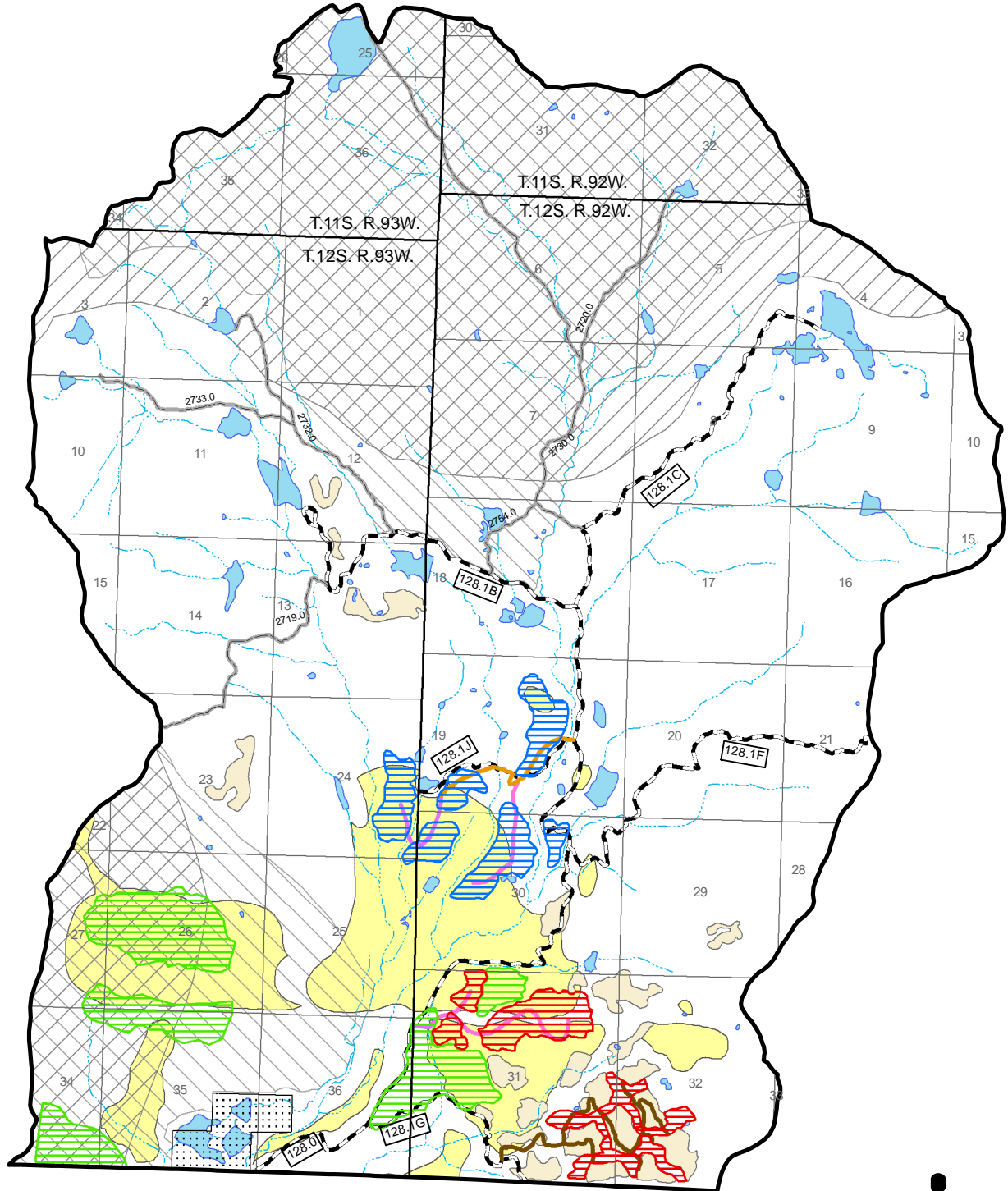


Leroux Creek Aspen Management Map 3: Alternative 3



ATTENTION:

Due to the nature of aerial surveys, this map should only be used as a partial indicator of sudden aspen decline (SAD) and should be validated on the ground for actual location. SAD locations are where tree mortality or crown dieback was apparent from the air. However, intensity of damage is highly variable and not all trees in shaded areas are dead or have crown dieback.

This product is reproduced from geospatial information prepared by the U.S. Department of Agriculture, Forest Service. GIS data and product accuracy may vary. They may be: developed from sources of differing accuracy, accurate only at certain scales, based on modeling or interpretation, incomplete while being created or revised, etc. Using GIS products for purposes other than those for which they were created, may yield inaccurate or misleading results. The Forest Service reserves the right to correct, update, modify, or replace, GIS products based on new inventories, new or revised information, and if necessary in conjunction with other federal, state or local public agencies or the public in general as required by policy or regulation. Previous recipients of the products may not be notified unless required by policy or regulations. For more information, contact GMUG National Forest at 970-874-6600.

Legend

- | | |
|-------------------------|-----------------------------|
| Analysis Area | Leroux Creek TS |
| Private | Duke Basis II TS |
| 2001 Roadless Inventory | Prescribe Burn |
| 2008 Roadless Inventory | Open Roads |
| Waterbodies | Open Trails |
| Streams | Reopen Closed Roads |
| Sudden Aspen Decline | Road Reconstruction |
| Past Harvest Activities | Temporary Road Construction |
| | Specified Road Construction |