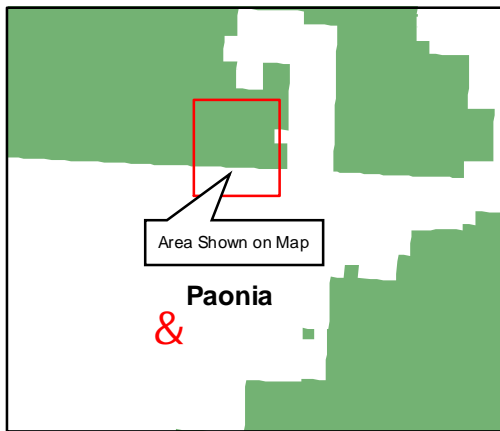
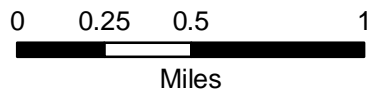


COC-61209 Proposed Federal Coal Lease Modification, Bowie Resources, LLC

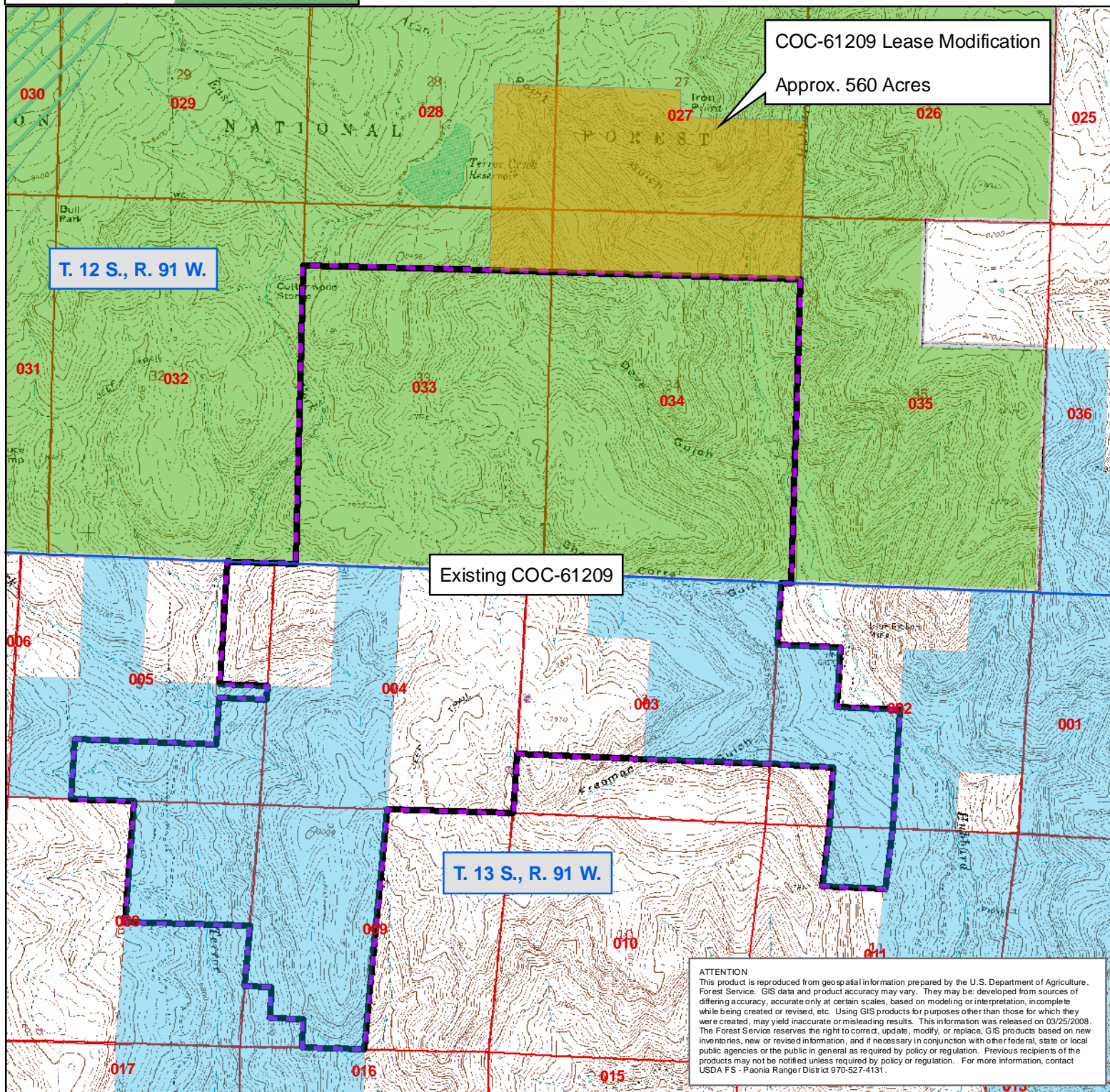


Legend

- BLM Lands
- Lease Modification Area
- Existing COC-61209 Lease Boundary
- National Forest Lands



F



ATTENTION
 This product is reproduced from geospatial information prepared by the U.S. Department of Agriculture, Forest Service. GIS data and product accuracy may vary. They may be developed from sources of differing accuracy, accurate only at certain scales, based on modeling or interpretation, incomplete while being created or revised, etc. Using GIS products for purposes other than those for which they were created, may yield inaccurate or misleading results. This information was released on 03/25/2008. The Forest Service reserves the right to correct, update, modify, or replace, GIS products based on new inventories, new or revised information, and if necessary in conjunction with other federal, state or local public agencies or the public in general as required by policy or regulation. Previous recipients of the products may not be notified unless required by policy or regulation. For more information, contact USDA FS - Paonia Ranger District 970-527-4131.