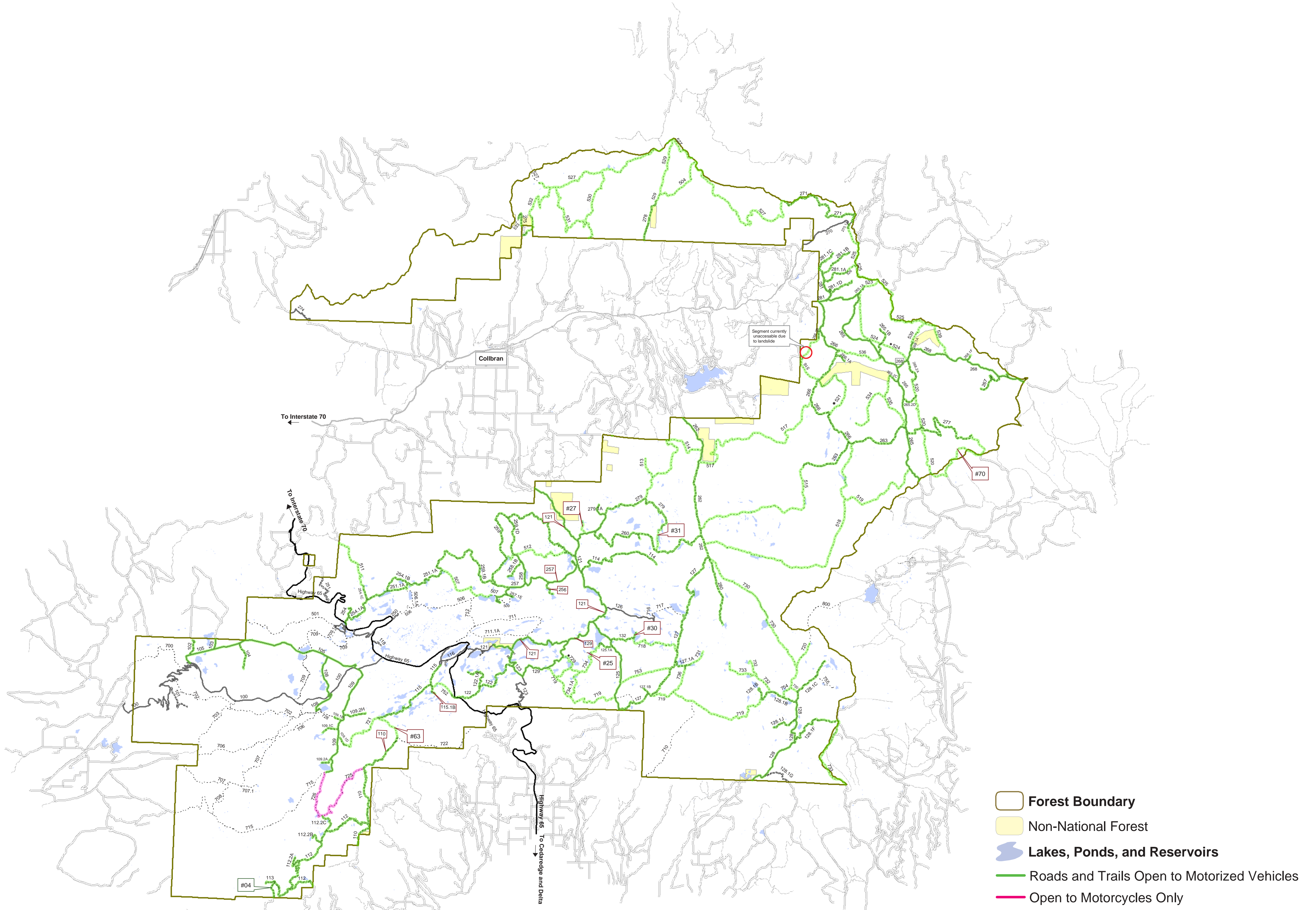


Grand Mesa National Forest Travel Plan Decision As Amended December 2003



- Forest Boundary
- Non-National Forest
- Lakes, Ponds, and Reservoirs
- Roads and Trails Open to Motorized Vehicles
- Open to Motorcycles Only
- Grand Mesa Travel Routes**
- Highway
- Improved Road
- Unimproved Road
- Trail
- Off Forest Routes**
- State Highway
- Improved; Paved
- Improved; Unknown Surface
- Trail
- * Previous Decision Exists to Open Route, Pending Reconstruction.**
- Routes Opened to ATV's in 2003 Decision

Grand Mesa Travel Management Decision

The following routes will be opened for OHV use:

Route #	Name	Length
04	Alkali Creek*	1.00
25	Trout Lake	0.26
27	Carpenter	0.68
30	Bonita*	0.64
31	Youngs Ditch	1.25
63	Granby	1.60
70	Lower Burn	3.60
110	Dirty George**	1.14
115.1B	Granby Res. Rd.**	0.46
121	Trickle Park Rd.**	12.30
129	Haypark Rd.**	2.24
256	Forty Acre Rd**	0.80
257	Cottonwood Rd**	3.50
268	Owens Creek Rd.**	0.25

*Routes to be newly opened to Full Sized and ATV use

**These are existing improved roads currently open to full sized vehicle traffic which are being opened to use by ATV's.

Off Forest Routes are shown for information only, and do not reflect USFS decisions. Not all Routes are open to the Public.

This product is reproduced from geospatial information prepared by the U.S. Department of Agriculture, Forest Service. GIS data and product accuracy may vary. They may be developed from sources of differing accuracy, accurate only at certain scales, based on modeling or interpretation, incomplete when being created or revised, etc. Using GIS products for purposes other than those for which they were created, may yield inaccurate or misleading results. This information was released on June 30, 2003. The Forest Service reserves the right to correct, update, modify, or replace. GIS products based on new inventories, new or revised information, and if necessary in conjunction with other federal, state or local public agencies or the public in general as required by policy or regulation. Previous recipients of the products may not be notified unless required by policy or regulation. For more information, contact Grand Mesa, Uncompahgre, Gunnison NF Supervisors Office, 970-874-6600.

