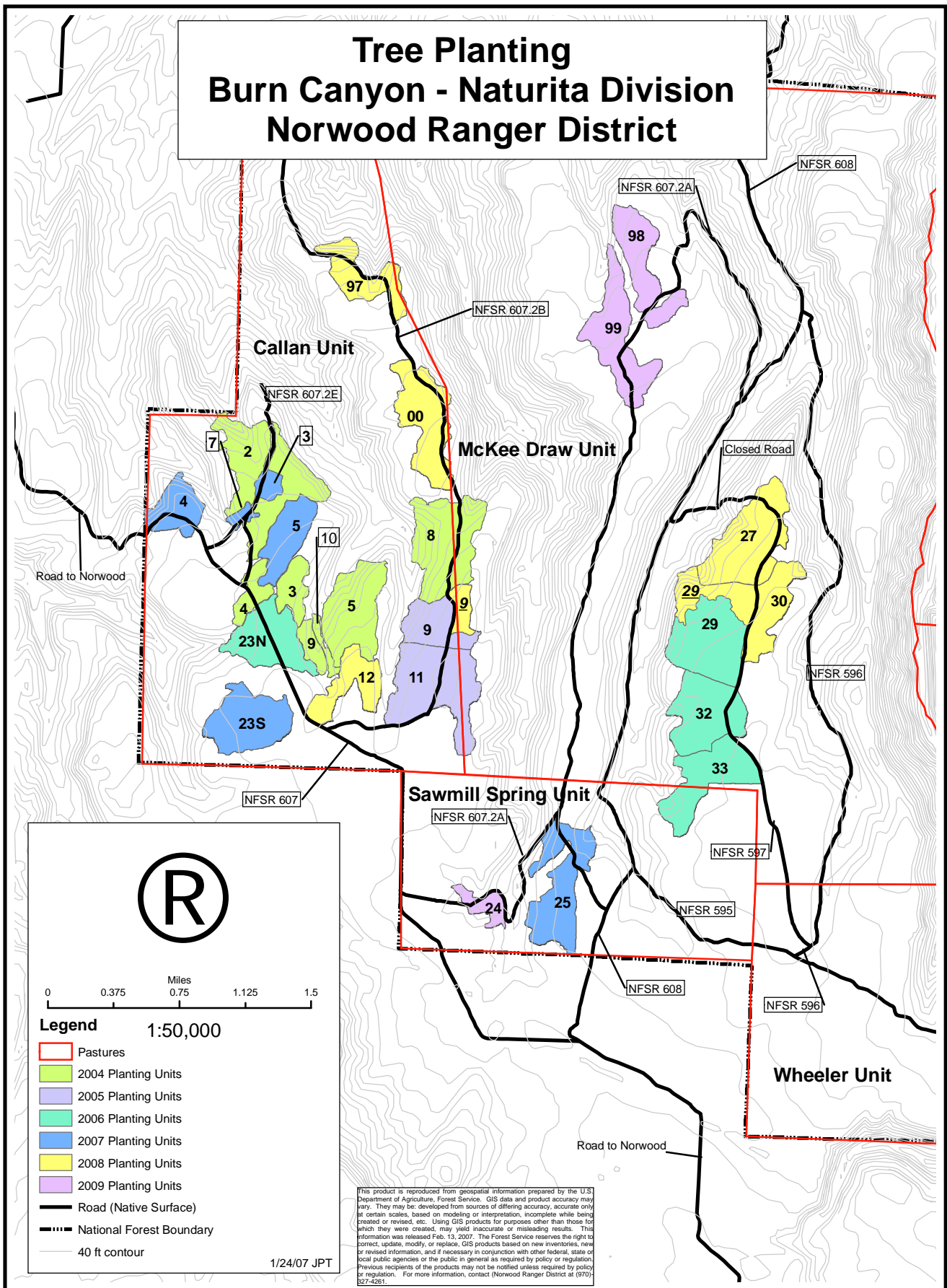



Tree Planting Burn Canyon - Naturita Division Norwood Ranger District





Miles

0 0.375 0.75 1.125 1.5

Legend 1:50,000

- Pastures
- 2004 Planting Units
- 2005 Planting Units
- 2006 Planting Units
- 2007 Planting Units
- 2008 Planting Units
- 2009 Planting Units
- Road (Native Surface)
- National Forest Boundary
- 40 ft contour

1/24/07 JPT

This product is reproduced from geospatial information prepared by the U.S. Department of Agriculture, Forest Service. GIS data and product accuracy may vary. They may be developed from sources of differing accuracy, accurate only at certain scales, based on modeling or interpretation, incomplete while being created or revised, etc. Using GIS products for purposes other than those for which they were created, may yield inaccurate or misleading results. This information was released Feb. 13, 2007. The Forest Service reserves the right to correct, update, modify, or replace GIS products based on new inventories, new or revised information, and if necessary in conjunction with other federal, state or local public agencies or the public in general as required by policy or regulation. Previous recipients of the products may not be notified unless required by policy or regulation. For more information, contact (Norwood Ranger District at (970) 627-4261.