



OCTOBER NOVEMBER DECEMBER
AUTUMN 2001

QUARTERLY

INSIDE

Designing for Security in the Nation's Capital / Page 2

Proceedings / Page 4

Other Commission Actions / Page 6

Delegated Actions / Page 9

Commission Notes / Page 11



Designing for Security in the Nation's Capital



GUARD HUTS ON THE NATIONAL MALL.

Sewer pipes encircling the U.S. Capitol. Jersey barriers blocking Pennsylvania Avenue. These and other fortifications have become familiar features in the Washington landscape in recent years and since September 11 their number has increased alarmingly. These installations communicate fear and retrenchment and undermine the basic premises of a democratic society. In response to this urgent situation, at a special meeting on November 1, the Commission approved wide-ranging recommendations to the President and the Congress to improve security design in the Nation's Capital.



MAKESHIFT GUARD HUTS, JERSEY BARRIERS, AND CONCRETE PLANTERS MAR THE BEAUTY OF WASHINGTON'S MONUMENTAL CORE.

2

These key security design recommendations include:

- Pennsylvania Avenue in front of the White House should remain closed at this time. If the security environment or technology improves in the future, this recommendation could be reconsidered.
- The area in front of the White House should be redesigned as a beautiful, landscaped civic space that welcomes pedestrians and respects the historic setting. This should be a distinguished public space and promenade that maintains the historic integrity of the street and permits the Inaugural Parade to follow its traditional route.
- Traffic improvements should be initiated immediately to help relieve traffic congestion created when Pennsylvania Avenue — a major east-west artery — was closed in front of the White House. Such improvements include synchronizing traffic lights, strictly enforcing parking regulations, and redesigning intersections. Based on the experiences of other cities, these simple steps can significantly help relieve traffic congestion.
- A Circulator system, a new transit service now being planned for Downtown Washington, should be implemented to permit limited use of the Avenue in front of the White House.
- Serious consideration should be given to a tunnel within the Pennsylvania Avenue or E Street Corridor because the city's long-term vitality will require the replacement of the east-west transportation link that was lost with the closing of Pennsylvania Avenue. The study of the need for a tunnel and its potential impacts should be completed within 18-24 months.

- E Street on the south side of the White House should be reopened as soon as possible.
- NCPC should immediately prepare an integrated Urban Design and Security Plan for Washington's Monumental Core. This plan will identify permanent security and streetscape improvements and include an array of landscape treatments, street furniture, bollards, etc. The plan will outline design solutions for Pennsylvania Avenue, the Federal Triangle, the National Mall, and the immediately surrounding area within the Monumental Core.
- The federal government should fund all costs associated with the development and implementation of the Urban Design and Security Plan, the traffic improvements, the Circulator, and tunnel assessments.

The recommendations are the result of broad cooperation between the federal and District governments, including the Department of Justice, the Department of the Interior, the General Services Administration, the Mayor's Office, the City Council, the U.S. Secret Service, the Department of Transportation, the Commission of Fine Arts, the Architect of the Capitol, and the Advisory Council on Historic Preservation. Working as an Interagency Task Force under the chairmanship of NCPC Commissioner Richard Friedman, the group began meeting in March 2001.

NCPC and its planning partners are already at work on the Urban Design and Security Plan and expect to release it this summer.

As part of its overall outreach effort on its security design proposals, the Commission hosted a public information session on December 5. In the coming weeks the Commission has scheduled a variety of additional information and public comment sessions with a variety of professional, business and community groups. The Interagency Task Force report (*Designing for Security in the Nation's Capital*) is available from the Commission offices and online at www.ncpc.gov. Written comments may be directed to Elizabeth Miller at the Commission. Comments may also be sent by fax: 202-482-7272, or by e-mail: info@ncpc.gov. The Commission will be forwarding public comment to the President and the Congress.



A LANDSCAPED CIVIC SPACE IN FRONT OF THE WHITE HOUSE WOULD NOT PRECLUDE REOPENING THE AVENUE OR STAGING THE INAUGURAL PARADE.

This issue of the Quarterly summarizes actions taken at the Commission meetings on October 10, November 1, and December 6, 2001. Additional information on individual projects may be obtained by contacting the National Capital Planning Commission, 401 9th Street, NW, North Lobby, Suite 500, Washington, D.C. 20576 or by calling 202-482-7200. Visit www.ncpc.gov for more news about Commission activities.

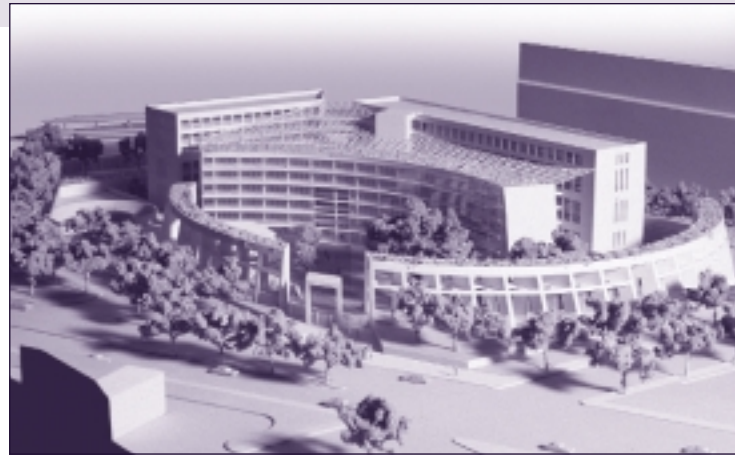
AMERICAN VETERANS DISABLED FOR LIFE MEMORIAL

*Washington, D.C.
October 10, 2001*

In selecting a location for the American Veterans Disabled for Life Memorial, the memorial sponsor identified six potential sites from the newly adopted Memorials and Museums Master Plan. The Commission approved the sponsor's preferred site, a two-acre triangle on Washington Avenue (Canal Street) and Second Street, SW, across from the landscaped grounds of the U.S. Botanic Gardens.

This location has a strong visual connection and physical proximity to the U.S. Capitol — an important connection to the memorial sponsors, who hope the memorial will remind legislators considering military action to contemplate the human costs associated with military decisions, as well as the long-term commitment to ensure the healthcare and rehabilitation of those injured as a result of military actions.

The chosen site is trafficked by pedestrians circulating in the area of the Capitol Building, the House and Senate office buildings, and the Mall; and, once renovations to the U.S. Botanic Gardens and construction of the National Museum of the American Indian are complete, pedestrian traffic will increase. In its approval, the Commission requested that the National Park Service and the Disabled Veterans Life Memorial Foundation configure the memorial's site and design in a way that would not encroach on the C Street right-of-way, thus protecting the potential to restore C Street to the historic configuration of the L'Enfant Plan.



THE ATF HEADQUARTERS BUILDING AT NEW YORK AND FLORIDA AVENUES, NE WILL HELP ESTABLISH THE CHARACTER OF THIS RE-DEVELOPING WASHINGTON NEIGHBORHOOD.

ATF NATIONAL HEADQUARTERS

*Washington, D.C.
December 6, 2001*

The Bureau of Alcohol, Tobacco and Firearms is locating its new national headquarters on New York and Florida Avenues in Northeast Washington, D.C., across the street from a planned Metro station. The proposed building, approved in concept development plans by the Commission, will contain office space for approximately 1,100 ATF employees on the 6.14-acre site.

The plan features two building wings arranged in an L shape, with a crescent-shaped building north of and within the L shape. A glazed atrium will connect these crescent- and L-shaped elements and provide daylight to the inner faces and central space adjoining the wings. The L-shaped building will be constructed of limestone-colored pre-cast concrete elements and the exterior façade of the curved building will be composed of glass.

One of the design's central features is a curved, arcaded three-story-high structure that, in enclosing the majority of the site, will define both the street edge and a large interior garden. This wall, which will have a smooth plaster finish and contain a grid of punched windows, should provide additional protection to the building and may serve as a memorial for fallen ATF personnel. The appropriate treatment for the wall will be developed in the project's next phase.

The new ATF headquarters facility is expected to enhance the quality of the city and contribute to the revitalization of this major gateway and its surrounding neighborhood.

METRO STATION ENTRANCE CANOPIES

D.C., Maryland, and Virginia

December 6, 2001

Exposure to the elements has been a major cause of operational problems on Metro escalators. In response to a new code requiring the enclosure of escalators within the Metrorail system, the Washington Metropolitan Area Transit Authority (WMATA) has selected a canopy design for use throughout the system. The Commission approved the canopy design concept, provided that: wind tunnel tests are conducted; the glass panels that line the canopy roofs are designed to be easily and quickly replaced; further consideration is given to a systematic approach to cleaning the glass panels; and adequate identification signs are displayed to direct passengers as they approach Metro. Prior to constructing canopies throughout the system, the Commission recommended that prototypes be erected at several locations and tested for a few months.

In early 2001, WMATA held an open design competition that brought in 167 proposals. The winning design, selected by the WMATA Board, is intended to be reminiscent of the coffered ceiling vault of the interior of the Metro stations. Light and airy, the structure will reveal the expansive sky by day and, with its soft glow lighting plan, will serve as a beacon at night.

The new canopies will be used at 53 Metro stations around the system, with four D.C. stations receiving specially modified designs. By protecting the escalators from corrosive effects and shielding riders from rain and snow, the new canopies should improve the Metrorail system's operational efficiency, as well as its customer satisfaction.



THE NEW NATIONAL SATELLITE, DATA, AND INFORMATION SERVICE BUILDING SHOWCASES ENVIRONMENTALLY SENSITIVE DESIGN.

SUITLAND FEDERAL CENTER

Prince George's County, Maryland

December 6, 2001

The Commission approved preliminary plans for a dramatic new building at the Suitland Federal Center that will showcase environmentally sensitive and technically innovative federal design. The National Oceanographic and Atmospheric Administration (NOAA) is constructing a new facility for its National Satellite, Data, and Information Service, which manages the nation's environmental satellites. Reflecting the mission of the agency in a variety of creative ways, the new building's office and parking space will be built into the site's natural sloping topography and will be covered with a domed sod roof. This partially buried portion of the building — visible from inside the campus, but not visible from Suitland Road outside the campus — will house flexible space for a cafeteria, exercise rooms, courtyard, kitchen, and conference and auditorium areas. Courtyards and skylights will puncture the green roof to let light into the work spaces below.

The most prominent feature of the new building is the four-story tower mounted with 20 dish antennas, a clear announcement of the agency's high-tech mission. The tower will hover over the sod dome, which has been designed as an extension of the landscape. New native trees and shrubs will be planted around the perimeter of the site, but large portions of the surrounding area with their existing turf grasses will be left undisturbed.

The new building will also house NOAA's educational outreach program, including educational tours of the Satellite Control Center. During times of satellite launches the facility will operate around the clock and will accommodate additional employees and visitors.

The building will initially house 549 employees, but NOAA estimates that there will be 648 employees working in the building by 2021. The Commission's approval did not extend to the proposed 500 parking spaces, which exceeds the Comprehensive Plan's recommended parking ratio of one parking space for every two employees. The Commission requested that GSA consult with NCP staff in an effort to reduce the amount of parking prior to the submission of final plans.

NEW METRO ENTRANCE CANOPIES REFLECT THE DESIGN OF THE STATIONS' VAULTED CEILINGS.

OTHER COMMISSION ACTIONS

ARIEL RIOS BUILDING, 12TH STREET AND PENNSYLVANIA AVENUE, NW, WASHINGTON, D.C.

The Commission approved preliminary and final site development plans for a temporary security barrier system at the Ariel Rios Building. Approval is limited to 18 months. A permanent solution is being prepared for this and other buildings within the Federal Triangle. Any future proposals should be coordinated with the plan currently being prepared by the Commission's Interagency Task Force on security. (12/6/01)

AMERICAN RED CROSS BUILDING, 2025 E STREET, NW, WASHINGTON, D.C.

The Commission approved preliminary and final site development plans for the installation of a sculpture and plaza at the southeast corner of the new American Red Cross Headquarters Building. The marble and granite sculpture, designed by Larry Kirkland, will rest on a paved plaza with a low seating wall on two sides. Inspired by the Red Cross flag and inscribed with the Nurse's Creed, the sculpture will enhance the identity and image of the new headquarter building, now under construction. (12/6/01)



PROPOSED ANDREW T. MCNAMARA BUILDING, FAIRFAX, VA

ANDREW T. MCNAMARA BUILDING, FORT BELVOIR, FAIRFAX COUNTY, VA

The Commission approved preliminary site and building plans for an addition to the Andrew T. McNamara Headquarters Complex in order to allow the Defense Threat Reduction Agency to consolidate. Plans also include the construction of a parking structure. (11/1/01)

THE HISTORIC CLEVELAND ELEMENTARY SCHOOL WILL BE COMPLEMENTED BY AN ADDITION THAT RESPECTS THE SCALE OF THE RESIDENTIAL NEIGHBORHOOD.



CLEVELAND ELEMENTARY SCHOOL, 8TH AND T STREETS, NW, WASHINGTON, D.C.

The Commission approved preliminary and final site and building plans for the rehabilitation of Cleveland Elementary School and the construction of two additions: a one-story, first floor addition for two classrooms, and a larger addition for administrative and common space. (12/6/01)

GARNET-PATTERSON MIDDLE SCHOOL, 10TH AND U STREETS, NW, WASHINGTON, D.C.

The Commission approved preliminary and final site and building plans for the construction of a new gymnasium, containing a large athletic court with retractable bleachers, a locker room, a fitness center, and support spaces. (11/1/01)

FEDERAL AVIATION ADMINISTRATION, 800 INDEPENDENCE AVENUE, SW, WASHINGTON, D.C.

The Commission approved preliminary and final site development plans for permanent perimeter security at Federal Office Building 10A. Security measures consist of bollards and built-in planters around the building perimeter, and guard booths and retractable bollards at entrances and exits. (12/6/01)



**E. BARRETT PRETTYMAN U.S. COURTHOUSE,
CONSTITUTION AND PENNSYLVANIA AVENUES, NW,
WASHINGTON, D.C.**

The Commission has now given final approval to site and building plans for restorations and a new annex to the courthouse. The project includes redesigning and landscaping the existing plaza into a pedestrian plaza that reinforces a sense of formality as visitors approach the courthouse. The annex includes approximately 350,000 gross square feet of new development and is expected to support the court's functional needs for 30 years. (10/10/01)

**BOLLING AIR FORCE BASE, DEFENSE INTELLIGENCE
ANALYSIS CENTER, WASHINGTON, D.C.**

The Commission asked that the Department of the Navy, in the preparation of preliminary plans for an addition to the Defense Intelligence Center, refine the preferred scheme. Achieving a greater feeling of openness and a reduced sense of the structure's mass were among the Commission's suggestions. The Commission commented favorably on the installation of temporary modular office space, which would be removed once the expansion has been completed. (11/1/01)

**HUBERT H. HUMPHREY BUILDING, 200
INDEPENDENCE AVENUE, SW, WASHINGTON, D.C.**

The Commission approved, for a period of five years, preliminary and final site and building plans for the installation of eight cellular telecommunications antennas on the roof of the Hubert H. Humphrey Building. (12/6/01)

THE ADDITION TO THE U.S. COURTHOUSE WILL FEATURE A PROMINENT CYLINDRICAL COMPONENT FRONTING CONSTITUTION AVENUE.

**FEDERAL RESERVE SYSTEM, MARTIN BUILDING,
20TH AND C STREETS, NW, AND 1709 NEW YORK
AVENUE, NW, WASHINGTON, D.C.**

The Commission approved preliminary and final site development plans for the temporary installation of bollards at the C Street and Virginia Avenue entrances to the Martin Building and at the main entrance to 1709 New York Avenue. Permanent approval was withheld, pending completion of the Interagency Task Force's Urban Design and Security Plan. (12/6/01)

**INTERNAL REVENUE SERVICE BUILDING, 1111
CONSTITUTION AVENUE, NW, WASHINGTON, D.C.**

The Commission approved preliminary and final site plans for an interim Security Barrier System at the IRS Building. The proposal includes the installation of a vehicle barrier system that controls the normal flow of authorized vehicles while having the capacity to stop and disable rapidly moving unauthorized vehicles. (10/10/01)

NAVAL SURFACE WARFARE CENTER, CARDEROCK DIVISION, BETHESDA, MD

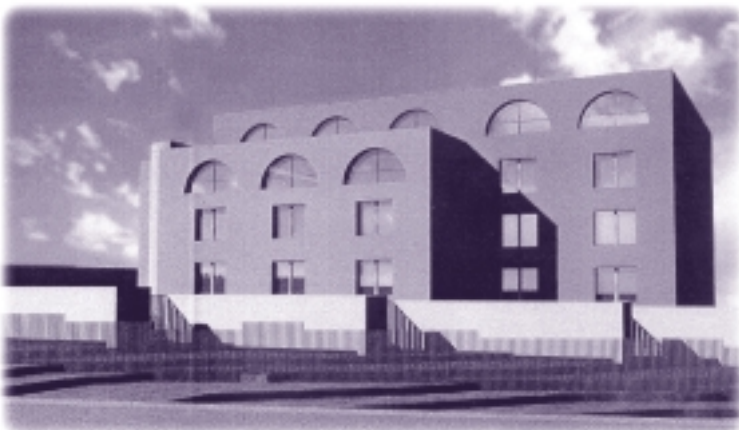
The Commission approved preliminary and final site and building plans for nine AT&T wireless telecommunication antennas and an equipment shelter, along with revisions to two existing antennas at the Naval Surface Warfare Center. (11/1/01)

U.S. DEPARTMENT OF COMMERCE, HERBERT C. HOOVER BUILDING, 14TH STREET AND PENNSYLVANIA AVENUE, NW, WASHINGTON, D.C.

The Commission approved preliminary and final site development plans for a temporary security barrier system at the Herbert C. Hoover Building. The installation will include concrete planters around the building perimeter and the replacement of vehicle barrier gates. Approval is limited to 18 months. Any future proposals should be coordinated with the plan currently being prepared by the Commission's Interagency Task Force on security. (12/6/01)

INTERNATIONAL CENTER, CHANCERY OF ISRAEL, CONNECTICUT AVENUE AND VAN NESS STREET, NW, WASHINGTON, D.C.

The Commission approved preliminary and final site development plans for a security wall at the Chancery of Israel. To soften the impact of the wall, additional landscaping, including trees and shrubs, will be planted between the wall and the existing fence. (12/6/01)



COMPUTER RENDERING OF MASONRY WALL AT THE ISRAELI CHANCERY, SEEN FROM RENO ROAD.

SUITLAND FEDERAL CENTER, PRINCE GEORGE'S COUNTY, MD

The Commission approved a three-phased Programmatic Development Plan as the framework for the future Suitland Federal Center master plan. (12/6/01)



COMPUTER RENDERING OF NIGHT LIGHTING ON L STREET AT NEW CONVENTION CENTER.

WASHINGTON CONVENTION CENTER, MOUNT VERNON PLACE, NW, WASHINGTON, D.C.

The Commission approved preliminary and final site development plans for streetscape improvements adjacent to and across the street from the new Washington Convention Center. Improvements include sidewalk pavers, street trees, trash receptacles, and light standards. (12/6/01)

WOODROW WILSON BRIDGE REPLACEMENT, WASHINGTON STREET, ALEXANDRIA, VA

The Commission approved revised preliminary and final site and building plans for the urban deck overpass at Washington Street in Alexandria. Revised plans conveyed that this area of the river crossing would be integrated in appearance with the George Washington Memorial Parkway and Mount Vernon Parkway and trail. (11/1/01)

**ON BEHALF OF THE COMMISSION,
THE EXECUTIVE DIRECTOR APPROVED:**

Preliminary and final site and building plans for the renovation and addition to Building 38, Walter Reed Army Medical Center, Main Campus, Washington, D.C. 9/27/01

Preliminary and final site and building plans for the construction of the new Kennel Support Facility to replace Building T-270, which the Army proposes to demolish, Fort Myer, Arlington, VA. 9/27/01

Preliminary and final site and building plans for the renovation of eight Senior Non-Commissioned Officers' Quarters, Buildings 23-26, at Fort Lesley J. McNair, at 4th and P Streets, SW, Washington, D.C. 9/27/01

Preliminary and final site and building plans for the Phase IV Columbarium at the Arlington National Cemetery, Arlington, VA. 10/25/01

Preliminary and final site plans for the construction of a jogging trail and sidewalk improvements along Marshall Drive in Fort Myer, VA. 10/25/01

Preliminary and final site and building plans for a new Patterson Elementary School at 4325 South Capitol Street, SW, Washington, D.C. 10/25/01

Preliminary and final site and building plans for the Nano-Science Laboratory Building, U.S. Naval Research Laboratory, Washington, D.C. 10/25/01

Preliminary site and building plans for the renovation of Building No. 70, Washington Navy Yard, Sicard Street, SE, Washington, D.C. 10/25/01

Preliminary and final site development plans for modifications to the perimeter gates for security, Walter Reed Army Medical Center, Main Campus, Washington, D.C. 11/29/01

Final revised site plan for construction of a new indoor air quality research facility, Building No. 423 at the National Institute of Standards and Technology in Gaithersburg, MD. 11/29/01

Preliminary and final site and building plans for the construction of a warehouse facility at the Washington Navy Yard, Anacostia Annex, Firth Sterling Avenue and South Capitol Street, SW, Washington, D.C. 11/29/01

Preliminary and final site and building plans for the First Helicopter Squadron Alert Facility Building, Andrews Air Force Base, Camp Springs, Prince George's County, MD. 11/29/01



THE NEW PATTERSON SCHOOL WILL HOUSE UP TO 520 STUDENTS.

DELEGATED ACTIONS

Preliminary and final site and building plans for the rehabilitation of Noyes Elementary School at 2725 10th Street, NE, Washington, D.C. 11/29/01

Preliminary and final site plans to renovate and conduct routine maintenance at the Robert F. Kennedy Gravesite, located at Arlington National Cemetery, Arlington, VA. 11/29/01

Preliminary and final site development plans for construction of three new security fences at the National Institute of Standards and Technology, Gaithersburg, MD. 11/29/01

Preliminary and final site and building plans for the construction of an addition to Building 101 at the Naval Surface Warfare Center, Carderock Division, Bethesda, MD. 11/29/01

Preliminary and final site and building plans for the upgrading of the east side electrical distribution system, including the construction of a new substation building, at Andrews Air Force Base, Camp Springs, Prince George's County, MD. 11/29/01

THE EXECUTIVE DIRECTOR CONCLUDED THAT:

A Consolidated Planned Unit Development for Square 5401, Lots 24-28, 48, and 49, and Square 5402, Lots 5-13, 16-18, 25, 802, 803, 807, 808, and 812 would not adversely affect the federal establishment or other federal interests, nor be inconsistent with the Federal Elements of the *Comprehensive Plan for the National Capital*.
10/25/01

The proposed text amendment to the Downtown Development District Zoning Regulations would not adversely affect federal interests, nor be inconsistent with the Federal Elements of the *Comprehensive Plan for the National Capital*.
11/29/01



PROPOSED REHABILITATION AND NEW CONSTRUCTION FOR NOYES ELEMENTARY SCHOOL.

COMMISSION NOTES



NCPC COMMISSION MEMBER AND STAFF AND REPRESENTATIVES FROM LEO A DALY & EDaw ACCEPTING APA AWARD

The National Capital Area Chapter of the American Planning Association has honored NCPC's Memorials and Museums Master Plan with an "Outstanding" award in the category of Policy Planning. Adopted in September 2001, the master plan identifies 100 sites throughout the city for commemorative and cultural attractions and sets out policies that will guide federal agencies in their review of proposed projects. Leo A Daly, the firm that consulted on the Memorials and Museums Master Plan, recognized the plan with an award for high quality.

The Commission and staff welcome Lisa MacSpadden, NCPC's Public Affairs Officer. Mrs. MacSpadden comes to NCPC from the U.S. Department of Housing and Urban Development where she served first as the Deputy Assistant Secretary, and then as the Acting Assistant Secretary for Public Affairs. Previously, Mrs. MacSpadden worked as a consultant, directing statewide press on three presidential campaigns and field producing the 69th and 70th Academy Awards. Prior to moving to Washington, she worked as a reporter and senior producer at the CBS television affiliate in Phoenix, Arizona.

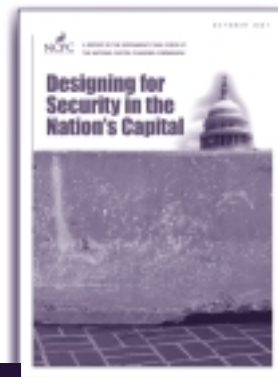


LISA MACSPADDEN
NCPC PUBLIC AFFAIRS OFFICER

On November 14 at the National Press Club, the Newington-Cropsey Cultural Studies Center brought together an esteemed assembly of speakers for their program, "100 Years After the McMillan Plan." Executive Director Patricia Gallagher addressed the Commission's role in planning the Nation's Capital in the wake of McMillan. In her presentation, she discussed the Legacy Plan, NCPC's long-range vision plan for the capital city, and work currently underway on a comprehensive urban design and security plan.

As part of National Geography Week, which educates the public about geography matters, an entire day was dedicated to the mapping technology known as Geographic Information Systems (GIS). At Howard University's GIS Day on November 14, 2001, NCPC staff showed how GIS technology is used by the National Capital Planning Commission.

On November 2, 2001, NCPC Chairman John Cogbill testified before the U.S. House subcommittee on Government Reform in D.C. The topic was terrorism's impact on the District. Chairman Cogbill discussed the Commission's Interagency Task Force on security, its recently released report, "Designing for Security in the Nation's Capital," and its recommendations for improving our Capital's safety while maintaining its aesthetic appeal.



NCPC Quarterly
Autumn 2001
October November December

The National Capital Planning Commission is the federal government's planning agency in the District of Columbia and surrounding counties in Maryland and Virginia. The Commission provides overall planning guidance for federal land and buildings in the region. It also reviews the design of federal construction projects, oversees long-range planning for future development, and monitors capital investment by federal agencies.

National Capital Planning Commission
401 9th Street, NW
North Lobby, Suite 500
Washington, DC 20576
Telephone | 202 482-7200
FAX | 202 482-7272
Web Site | www.ncpc.gov

Commission Members

John V. Cogbill, III, Chairman

Richard L. Friedman

Robert A. Gaines

Arrington L. Dixon

Patricia Elwood

The Honorable Donald H. Rumsfeld
Secretary of Defense

The Honorable Gale A. Norton
Secretary of the Interior

The Honorable Stephen A. Perry
Administrator of General Services

The Honorable Joseph I. Lieberman
Chairman, Senate Committee on Governmental Affairs

The Honorable Dan Burton
Chairman, House Committee on Government Reform

The Honorable Anthony A. Williams
Mayor of the District of Columbia

The Honorable Linda W. Cropp
Chairman, Council of the District of Columbia

Executive Director
Patricia E. Gallagher, AICP

NATIONAL CAPITAL PLANNING COMMISSION
401 9TH STREET, NW, NORTH LOBBY, SUITE 500
WASHINGTON, DC 20576

Presorted Standard
POSTAGE & FEES
PAID
National Capital
Planning Commission
Permit No. G-196