



**US Army Corps  
of Engineers®**  
New Orleans District

---

## **SCOPING REPORT**

### **Wetland Creation and Restoration**

#### **Louisiana Coastal Area, Louisiana --Ecosystem Restoration Barrier Island Restoration, Marsh Creation, and River Diversion, Barataria Basin Feasibility Study**

##### **Public Scoping Meeting and Scoping Letters Comments and Concerns**

## **INTRODUCTION**

The National Environmental Policy Act (NEPA) of 1969 established a nationwide policy to include in every recommendation or report on proposals for major Federal actions significantly affecting the environment a detailed statement of the environmental impact of the proposed action. A Notice of Intent to Prepare a Draft Environmental Impact Statement (EIS) for the wetland creation and restoration component of the Louisiana Coastal Area, Louisiana – Ecosystem Restoration, Barrier Island Restoration, Marsh Creation, and River Diversion, Barataria Basin Feasibility Study was published in the *Federal Register* (Volume 65, No. 88) on Friday, May 5, 2000.

The NEPA also provides for an early and open public process for determining the scope of issues, resources, impacts, and alternatives to be addressed in the draft EIS. This process is referred to as the scoping process. A public scoping meeting was held on June 20, 2000 at 7:00 pm in the Student Union/Acadia Hall Ballroom at Nicholls State University in Thibodaux regarding the wetland creation and restoration component of the Louisiana Coastal Area, Louisiana – Ecosystem Restoration, Barrier Island Restoration, Marsh Creation, and River Diversion, Barataria Basin Feasibility Study. Public comments and concerns expressed during the scoping meeting, and letters received during the 30-day comment period immediately following are presented in this Scoping Report.

Public scoping comments and concerns are requested early in the EIS-preparation process to determine the scope of the draft EIS by identifying the significant issues, range of alternatives, and mitigation the public and other interested parties request to be addressed and emphasized in the EIS. This Scoping Report presents and summarizes the 44 comments and concerns expressed

at the public scoping meeting, as well as the two scoping comment letters received and the single verbal comment received.

## **Study Purpose**

The New Orleans District (NOD) of the U.S. Army Corps of Engineers (Corps) proposes to investigate the feasibility of restoring and/or creating wetlands in the Caminada Bay area of the Barataria Basin. The study area is located in Lafourche Parish, Louisiana, and includes parts of Caminada Bay, Little Lake to the northeast of Golden Meadow, and Little Lake to the west of Leeville, as well as the marshes along the West Fork Bayou L'Ours Ridge and the marshes along Bayou Lafourche and LA Highway 1 south of Golden Meadow (Figure 1).

The Louisiana Coastal Wetlands Conservation and Restoration Task Force and the Wetlands Conservation and Restoration Authority produced a document entitled "Coast 2050: Toward a Sustainable Coastal Louisiana" in December 1998. That document presented strategies jointly developed by Federal, state, and local interests to address Louisiana's massive coastal land loss problem and provide for a sustainable coastal ecosystem by the year 2050. This effort culminated in a joint agreement between the Corps of Engineers and the Louisiana Department of Natural Resources (LDNR) to evaluate selected features of the Coast 2050 Plan in a Federal feasibility study. A Feasibility Cost Sharing Agreement was executed with the LDNR on February 18, 2000.

The purpose of the proposed action is as follows: (1) In general, the purpose of the Coast 2050 Plan is to sustain a coastal ecosystem that supports and protects the environment, economy, and culture of southern Louisiana, and that contributes greatly to the economy and well-being of the nation; (2) the purpose of the Coast 2050 strategies for the Barataria Basin is to restore and/or protect the natural and human environment to create a sustainable ecosystem in the Barataria Basin within the context of the Gulf of Mexico ecosystem, including coastal Louisiana; and (3) the purpose of the proposed action, wetland creation and restoration (Strategies R2-16 and R2-17 of the Coast 2050 Plan) is to create and/or restore wetlands in the western Barataria Basin so as to protect and sustain the ecological functions, the natural distributary ridges, and the local human infrastructure of the area.

## **Study Alternatives**

The no-action alternative must be evaluated and retained throughout the study. Alternatives to be examined include filling, terracing, marsh replenishing, and the beneficial use of dredged material from maintenance dredging of navigation channels. Additionally, other alternatives to be evaluated in detail are expected to be developed during the scoping process.

## **Scoping Meeting and Request for Public Comment**

An announcement of a public scoping meeting to be held on June 20, 2000, at 7:00 PM, in the Student Union Ballroom/Acadia Hall of the Nicholls State University campus in Thibodaux, Louisiana, was distributed to interested parties in May 2000. In the announcement, two questions were provided as a means of focusing the public's comments and concerns:

*Question #1: What are the most important issues, resources, and impacts that we should consider in the EIS?*

*Question #2: Are there any other alternatives or modifications to existing alternatives that we should consider in the EIS?*

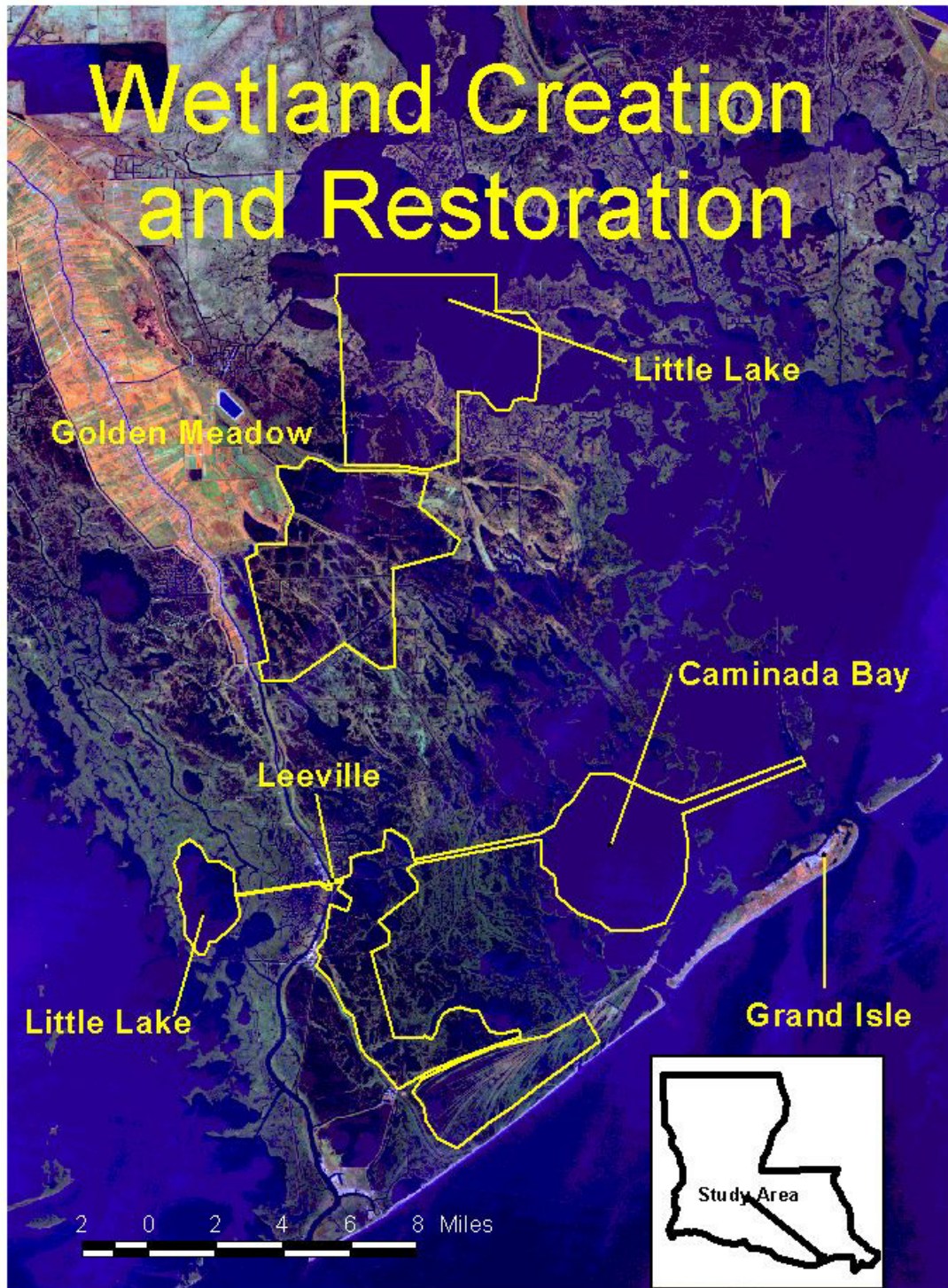
At the scoping meeting, the Corps presented a brief description of the scoping process, the Corps study process, and the Corps compliance procedures on how it will implement the NEPA (National Environmental Policy Act) process, in particular preparation of the Environmental Impact Statement (EIS). Facilitators recorded participants' comments and concerns. Twenty-one individuals participated in the scoping meeting. The sign-in sheet is presented in Attachment 1. Scoping meeting participants presented their comments and concerns regarding the proposed study. Every individual comment and concern was recorded until no new comments or concerns were expressed.

A total of 44 comments and concerns were recorded from scoping meeting participants (Table 1). Attachment 2 contains copies of the two scoping comment letters. Table 2 displays the categorization of the comments in these letters along with the verbal comments received during the comment period. All registered scoping meeting participants, as well as those providing comment letters and verbal comments, will be included on the Corps' mailing list of interested parties and will receive copies of this Scoping Report. This mailing list will also be used for informing interested parties of the availability of the draft EIS for their review and comment. The Scoping Report will also be posted on the Internet at <http://www.coast2050.gov>.

## **NOD'S REVIEW OF SCOPING COMMENTS AND CONCERNS**

The scoping process enables the Corps to determine the public's major comments and concerns. This information will be considered both in the Corps study process and in preparation of the draft EIS. Table 1 displays where in the draft EIS individual scoping comments and concerns would likely be addressed. To create Table 1, each scoping comment was reviewed for content and categorized by EIS subject matter heading. Similarly, Table 2 displays where in the draft EIS comments and concerns expressed in scoping comment letters and verbal comments would likely be addressed. A scoping comment may be addressed in more than one section of the draft EIS if such consideration is required to appropriately consider the ramifications of the comment. EIS Subject Matter Headings Include: Purpose and Need for Action (PN), Alternatives Including the Proposed Action (Alt), Affected Environment (AE), Environmental Consequences (EC), and Consultation and Coordination (CC) with the public and other agencies. Compliance with Regulations (Federal, state, and local environmental laws and regulations) is included in the latter category. Compliance with major environmental laws and regulations such as the Endangered Species Act of 1973, the Coastal Zone Management Act of 1972, and the Fish and Wildlife Coordination Act will be addressed in specific sections of the draft EIS (especially in the Environmental Consequences section).

Figure 1. Map of project area.



**Table 1.** Scoping Meeting Comments.

#	Category*					Comment
	PN	Alt	AE	EC	CC	
1		X			X	Utilize dredged material beneficially with Section 204/1135.
2	X					Consider expanding study area to include Superior Canal.
3		X	X			Consider restoration of interior ridges.
4	X	X				Consider including BA-2 Project area.
5			X	X		Look at the effect that deepening the borrow areas will have on sediment (i.e., as a sediment trap in the system) and other marsh aspects (i.e., wave energies)
6		X	X	X	X	Consider blocking channels to block salt water intrusion
7		X				Look at using the Barataria Bay Waterway as a sediment source for dredge material.
8		X				Consider dedicated dredging.
9		X	X			Don't use natural shell areas as borrow material.
10		X	X		X	Create a buffer zone around existing shell deposits.
11			X	X	X	Consider turbidity levels around the shell deposits and their impacts on viability (i.e., long term viability as habitat).
12	X	X	X	X		Consider the elevation of the fill to account for marsh as well as hurricane protection.
13	X	X	X	X		Would like the southern and eastern portions constructed first to prevent further saltwater intrusion.
14	X	X				Consider the "Big Ticket" projects (i.e., freshwater and sediment diversions).
15		X				Consider mining (or piping) sediment from the Mississippi River.
16	X				X	Accelerate the study timeline due to marsh loss rate (Approximately 600,000 acres will be lost before construction would begin).
17	X	X	X	X	X	Suggests that the areas along LA Highway 1 and the S. Lafourche levee system be given priority over remote areas
18		X	X	X		What is the dominant marsh grass in the study area? Make sure salt-tolerant species (e.g., wiregrass, blackrush and oystergrass) are utilized in revegetation.
19			X			Consideration of saltwater intrusion and how nature handles this through vegetation species shifts.
20		X				Study should consider offshore sediment sources (i.e., Ship Shoal, etc.).
21	X	X			X	Coordinate with MMS to see if Federal fee for sediment removal can be waived.
22		X				Consider a conveyance channel to bring sediments to the area (Coast 2050 strategy).
23		X	X			Consider the Gulf of Mexico as a source of brackish water and sediment for natural marsh building.
24	X		X			Consider the amount of sediment being removed from the Barataria Basin.

**Table 1 (cont.)**

#	Category*					Comment
	PN	Alt	AE	EC	CC	
25			X	X	X	Consider the economic losses to commercial and recreational fishing industries.
26					X	Account for landscape changes in H & H models presently being used for projections in the area (e.g., hydrologic and salinity).
27			X	X	X	Consider the benefits to fisheries by providing habitat (nursery).
28		X	X			Should not consider taking sediments from the northern portion (Little Lake) for use in this project (should only be a last resort). Focus on off-shore sediment sources.
29	X				X	Consider closing MRGO and constructing locks on the Houma Navigational Canal, reducing the impacts of man-made structures on the coast.
30			X	X	X	Consider the effects of radiation released by removal of marine sediments and its impact on marine organisms.
31			X	X	X	Perform analysis on borrow material for contaminants.
32		X			X	Look at using abandoned oil and gas pipelines for transporting dredged material.
33		X	X	X	X	Look at pollution control issues (preventing further contamination of the area).
34			X			Determine what killed the vegetation (pesticides, nitrates, phosphates, insecticides, weed killers, and fungicides).
35			X			Determine why the salt marshes to the east of the study area are in better shape than those in the study area (both are exposed to saltwater intrusion).
36	X				X	Expand the study area to include the area west of Bayou Lafourche from Little Lake to Catfish Lake.
37			X	X	X	Would like to see equitable compensation for oyster leaseholders.
38			X	X	X	Standardize evaluation methods for oyster leases with input from scientists and commercial fisherman.
39		X	X	X	X	Look at seasonal effects of construction on biological processes.
40		X				Consider using green waste (organic material) for marsh building.
41			X	X	X	Consider impacts on shellfish as the water filter system and the mainstay in the food chain.
42		X	X	X		Consider impacts to insure the water and land function as a unit.
43			X	X	X	Consider impacts to oil and gas exploration.
44			X			Look for saltwater intrusion reports showing saltwater effects on the various types of marsh (i.e., fresh, brackish, intermediate, and saline) and the species that are associated with them.

\*Categories:

PN – Purpose and Needs,

Alt – Alternatives,

AE – Affected Environment,

EC – Environmental Consequences,

CC – Consultation and Coordination

**Table 2.** Categorization of the two scoping comment letters and one verbal comment by EIS subject matter heading for the Wetland Creation and Restoration component of the Louisiana Coastal Area, Louisiana—Ecosystem Restoration, Barrier Island Restoration, and River Diversion, Barataria Basin Feasibility Study.

Category*					Comment
PN	Alt	AE	EC	CC	
				X	Mr. Lee P. Gary, Jr., Strategic Management Services - USA requested a copy of the EIS Scoping Notice, the Scoping Document when released, and to be added to the mailing list for future announcements and publications.
	X				Mr. R.J. LaBorde suggested that sheet piling be driven across the affected areas with control points at different intervals. Suggestion that silt be diverted from the river to supplement marsh building. Suggestion that make haste before we are living in the Gulf.
	X				Mr. Emilio Rene Mayoural suggests the use of concrete blocks as a series of breakwaters to protect the barrier islands, in particular Grand Isle. Concrete blocks would be approximately 8 by 20 feet with about a 2 foot gap between each concrete block and set approximately 1/4 to 1/2 mile on the Gulf side of the barrier islands.

\*Categories:

PN – Purpose and Needs,

Alt – Alternatives,

AE – Affected Environment,

EC – Environmental Consequences,

CC – Consultation and Coordination

## SUMMARY OF SCOPING COMMENTS

The comments and concerns expressed at the public scoping meeting and in the scoping comment letters and verbal comments are summarized below. Scoping comments and concerns are grouped by EIS subject matter heading. The subject matter typically presented within each EIS subject matter heading is briefly described. Those comments and concerns most often expressed by several scoping meeting participants are identified. The most numerous comments and concerns were expressed regarding purpose and need for action, followed by project alternatives, affected environment, environmental consequences, and consultation and coordination.

PURPOSE AND NEED FOR THE ACTION. This section of the draft EIS identifies the proposed action, the need for the proposed action, the study authority, major public concerns, and planning objectives. Eleven of the 44 total comments and concerns expressed at the scoping meeting related to the purpose and need for the proposed action. These comments were primarily concerns that other areas of coastal Louisiana should be included in this study and prioritizing specific areas for construction, but one comment suggested that hurricane protection be investigated.

ALTERNATIVES, INCLUDING THE NO-ACTION ALTERNATIVE. This section of the draft EIS identifies and describes plans eliminated from further study, the no action or without project conditions, alternatives considered in detail, the preferred alternative, and the comparative impacts of alternatives. Consideration of the "No Action" alternative is required, and includes a description of the consequences of no action being taken. Twenty-four of the 44 comments and concerns expressed at the scoping meeting regarded project alternatives. One of the scoping letters and the only verbal comment received expressed concern about project alternatives.

Some of the major concerns related to alternatives were about sediment sources. These included utilizing material that is currently being dredged from navigation channels, the introduction of sediments to the system via natural and man-made means, the transportation of sediment to the placement areas, diversion of sediment from the river, and suggested restrictions to the selection of sediment borrow sources. Frequently mentioned were concerns about deleterious effects on existing natural shell beds and deposits. There were also comments suggesting that marsh creation that would provide protection to human infrastructure should be given priority. The seasonal timing of the construction was also a concern. Also suggested was the use of sheet piling across the entire study area and construction of concrete breakwaters at the barrier island, particularly Grand Isle.

AFFECTED ENVIRONMENT. This section of the draft EIS identifies and describes the natural and human resources including physical, biological, social, economic, and cultural resources likely to be impacted in and surrounding the vicinity of the proposed action area and alternative areas. This section also includes a description of the locations, quantities, and qualities of significant resources including why they are significant.

Twenty-eight of the 44 total comments and concerns expressed at the scoping meeting related to the affected environment. Most of these comments related to the sediment source, either suggesting locations or materials for borrow sources, expressing concerns about potential borrow sources, or making suggestions on prioritizing the construction of the projects. Of particular concern were existing shellfish beds and the potential to disrupt them through proposed actions, as well as oyster lease evaluation. Also of concern were pollution issues, ranging from radiation to pesticides and herbicides. One comment suggested we research the reason for the apparent difference in health between the marshes along LA Highway 1 and marshes farther away from the highway.

ENVIRONMENTAL CONSEQUENCES. In this section of the draft EIS, the environmental effects of each alternative on significant resources are described and compared among alternatives. For each alternative considered in detail, we determine the comparative direct, secondary, and cumulative impacts to each significant resource. Potential mitigation measures for adverse environmental impacts are also presented. For each alternative considered in detail, we use current and predicted future conditions as the basis for determining mitigation (preferably in-kind and in-basin), insuring compliance with all rules, regulations, and guidelines.



Eighteen of the 44 total comments and concerns expressed at the scoping meeting related to the environmental consequences of the proposed action. In addition to pollution issues, concerns were expressed related to the impacts to the oil and gas industry, fisheries, and sediment budgets. Several concerns were related to the impacts of the proposed actions on oysters.

CONSULTATION AND COORDINATION. This section of the EIS deals with consultation and coordination with the public and federal, state, and local agencies, including compliance with various laws and regulations. References to compliance with specific regulations are presented in various sections and appendices throughout the draft EIS. A notice will be placed in the *Federal Register* that identifies the draft EIS, the agency, and the manner in which copies may be obtained. A date is given for the receipt of comments on the draft, usually 45 days after issuance of the draft EIS. The draft EIS will contain a table describing the status of compliance with applicable federal, state, and other laws and regulations. Separate sections are presented in the draft EIS describing compliance with the Clean Air Act Applicability Determination, the Coastal Zone Management Act, the Endangered Species Act, the Fish and Wildlife Coordination Act, Prime and Unique Farmlands, 1980 CEQ Memorandum, Section 404(b)(1) evaluation, and coordination the State Historic Preservation Officer. Other scoping comments and concerns, less easily categorized, will be appropriately described and addressed in the draft EIS.

Twenty-one of the 44 total comments and concerns expressed at the scoping meeting related to coordination and consultation. One of the letter comments related to coordination and consultation. One comment from the public meeting suggested coordination with the Mineral Management Service to waive the mining fee for sediments from Ship Shoal. Two of the comments were related to policy matters concerning oyster leases. The beneficial use of material generated through maintenance dredging was suggested. Coordination was also suggested with agencies regarding the use of hydrologic and hydrodynamic models to account for projected landscape changes as a result of wetland creation. Several comments involved assessing potential environmental impacts, which would require consultation and coordination with other agencies.

## **CONCLUSIONS**

The scoping comments and concerns described herein identify the significant issues, range of alternatives, and concerns that will be addressed in the draft EIS. Many of the scoping comments and concerns are presently being considered in determining project alternatives. Scoping comments will be addressed in the draft EIS as described above. A completion date for the draft EIS has not been determined yet. However, when completed, the draft EIS will be distributed for public comment and interagency review. The Corps' responses to public comments on the draft EIS will be included in the Final EIS, which will also be made available to the public for comment.

**ATTACHMENT 1**

**LIST OF REGISTERED  
SCOPING MEETING PARTICIPANTS**

**SCOPING MEETING (20 June 2000) PARTICIPANTS  
SIGN-IN SHEET (PLEASE PRINT CLEARLY)**

Wetland Restoration and Creation in the Barataria Basin, Louisiana	
A Component of the Louisiana Coastal Area, Louisiana-Ecosystem Restoration, Barrier Island Restoration, Marsh Creation, and River Diversion, Barataria Basin Feasibility Study.	
NAME	ADDRESS
Sandra Barberis	Tim - P. Cayenne 504-826-3784 2520 Belle Chasse Hwy. Gentree, 70052
Hermit Kraemer, JR	City of Thibodaux
Catherine Grouchy	LDNR/CRD
Davis Lee	LDNR/CRD - Thibodaux
Brian Kendrick	MPH, INC 283 Corporate Dr. P.O. BOX 3106 Houma, LA 70361
CHRIS KNOTTS	LDNR/CRD
Cullen Curde	GOCA
Katia A Gaudet	DAILY COMET
ROBERT THIBODAUX	416 HWY 308 THIB. LA.
JEFF ROBINSON	9357 INTERLUS AVS. BATON ROUGE, LA 70809
J B Marceaux	600 Kenney Houma - 70364
Paul M. Lincum	Biology Dept. N. S. U., Thibodaux, LA 70310
GREGORY J. DuCOTE	LDNR/CRD

**SCOPING MEETING (20 June 2000) PARTICIPANTS**  
**SIGN-IN SHEET (PLEASE PRINT CLEARLY)**

Wetland Restoration and Creation in the Barataria Basin, Louisiana	
A Component of the Louisiana Coastal Area, Louisiana--Ecosystem Restoration, Barrier Island Restoration, Marsh Creation, and River Diversion, Barataria Basin Feasibility Study.	
NAME	ADDRESS
LCOR SAMUEL L. HART	209 E OAKLAWN THIBODAUX, LA 70301
Ray Francis	LAI Coalition PO Box 2044 - NSU Thib LA 70301
AL ENOS	215 BURMASTER ST. BELLE CHASSE, LA. 70037
Edmond Russo	COE
Joan Exnicios	Cultural Resources U.S. Army Corps of Engineers
<i>Robert L. ...</i>	PO Box 3894 Houma La 70361
Robert E. ...	12365 CLERMONT AVE Blue Ridge Summit Pa 17214
Paul Hughbanks	COE

**ATTACHMENT 2**

**SCOPING COMMENT LETTERS**

STRATEGIC MANAGEMENT SERVICES - USA

---

2837 CARONDELET STREET  
NEW ORLEANS, LOUISIANA 70115

TEL: (504) 268-2330  
FAX: (504) 899-9217  
EMAIL: SMS\_USA  
@ COMPUSERVE.COM

26 June 2000

Dr. William P. Klein, Jr.  
CEMVN - PM - RS  
US Army Corps of Engineers  
Post Office Box 60267  
New Orleans, LA 70160-0267

Dear Dr. Klein:

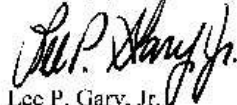
Thank you for providing me with a copy of the "EIS Scoping Notice" for the "Wetland Restoration and Creation in the Barataria Basin, Louisiana," kindly relayed by Ms. Jennifer Lefort of the Public Affairs Office.

Please add my name to the mailing list for future announcements and related publications for the EIS.

In particular, I would appreciate your help to receive the "Scoping Document" when it is released.

With best personal regards. I am,

Sincerely yours,



Lee P. Gary, Jr.  
Owner

June 27, 2000  
4736 Clithero St.  
Met. 70006, La.

Gentlemen:

In reference to your request for public comments, I am proposing the following.

Sheet piling can and should be done across the affected areas with control points at different intervals.

Silt should be diverted from the river where it is free all year around; maybe some can be dredged to supplement this.

Remember it was the river that created the marsh to begin with.

Thank you  
R. D. LaBorde Jr.

Please make haste before we  
are all living on the Gulf.



## United States Department of the Interior

### FISH AND WILDLIFE SERVICE

646 Cajundome Blvd.  
Suite 400  
Lafayette, Louisiana 70506

June 20, 2000



Colonel Thomas F. Julich  
District Engineer  
U.S. Army Corps of Engineers  
Post Office Box 60267  
New Orleans, Louisiana 70160-0267

Dear Colonel Julich:

The U.S. Fish and Wildlife Service has reviewed the May 5, 2000, Notice of Intent (NOI) to prepare a draft Environmental Impact Statement (DEIS) for the Louisiana Coastal Area, Louisiana, Ecosystem Restoration; Wetland Restoration and/or Creation Feasibility Study. The purpose of that study is to analyze the direct and indirect impacts of restoring and/or creating wetlands in the southwestern portion of the Barataria Basin, Louisiana. The Service submits the following comments in accordance with provisions of the Fish and Wildlife Coordination Act (48 Stat. 401, as amended; 16 U.S.C. 661 et seq.), the National Environmental Policy Act of 1969, as amended, and the Endangered Species Act of 1973, as amended.

Significant fish and wildlife resources that should be addressed in the DEIS include shorebirds, wading birds, migratory and resident waterfowl, threatened and endangered species, estuarine-dependant fishes and shellfishes, and important habitats such as emergent marsh, submerged aquatic vegetation, and shallow open-water habitat. The Service recommends that the study investigate alternatives for marsh creation which will benefit wetlands beyond the footprint of the marsh creation site. For example, some marsh creation sites could preserve the integrity of adjacent marsh, remnant natural levee ridges, and other habitats by reducing wave energy and/or improving hydrologic conditions in those areas. Also, alternatives being investigated should include measures to reduce the impacts of dredged material disposal to existing emergent marsh habitat.

The Service also recommends that careful consideration be given to impacts which may result in the borrow areas such as bay and lake bottom habitat near the creation sites. Significantly increasing depths in those areas could result in: 1) anoxic conditions detrimental to aquatic organisms, 2) increased tidal prism in adjacent marshes, and 3) increased wave erosion of adjacent shorelines. The potential for those impacts should be determined during this study.

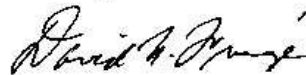
The Service is currently under court order to designate critical habitat for the threatened piping plover which winters in coastal Louisiana. Habitats utilized by wintering piping plovers include



beaches, mudflats, sandflats, algal flats, and washover passes. Piping plovers feed extensively on mudflats and beaches, and require sparsely vegetated areas for roosting. The purpose of designating critical habitat is to provide supplemental protection for habitat that is essential to the species' conservation and ensure that it is not adversely modified or destroyed by activities under Federal jurisdiction. We will keep your staff advised on the status of critical habitat designation for the piping plover.

We will continue to work closely with your staff during our involvement in the feasibility study. If you have any questions regarding our comments, please contact Kevin Roy at 337/291-3120.

Sincerely,



David W. Frugé  
Field Supervisor

cc: EPA, Dallas, TX  
LA Dept. of Wildlife and Fisheries, Baton Rouge, LA  
LA Dept. of Natural Resources (CRD), Baton Rouge, LA  
FWS, Atlanta, GA (AES)  
FWS, Atlanta, GA (GARD I)

MEMO OF MEETING  
DATE: June 19, 2000

On June 19, 2000, Corps personnel, Messrs. Chris Alfonso, Rick Broussard (both of E.D-LW), and Bill Klein (PM-RS) met with Mr. Emilio Rene Mayoural, 3804 Balivais Street, Metairie, LA 70001, on to discuss scoping comments for the Barrier Shoreline Restoration and the Wetland Creation and Restoration projects. Mr. Mayoural indicated he was unable to attend either of the scoping meetings and has a difficult time in writing in English; hence, his request for a meeting to discuss his scoping comments. Mr. Mayoural suggests the use of concrete blocks as a series of breakwaters to protect the barrier islands, in particular Grand Isle. Concrete blocks would be approximately 8 by 20 feet with about a 2 foot gap between each concrete block and set approximately 1/4 to 1/2 mile on the Gulf side of the barrier islands. Mr. Mayoural suggests that this would also provide protection for interior marshes in the Barataria Basin.

*[Faint, illegible handwritten notes and bleed-through from the reverse side of the page.]*