

Figure 2a. Frog and toad eggs. Dark lines represent distinct egg envelope borders, gray lines represent indistinct borders.

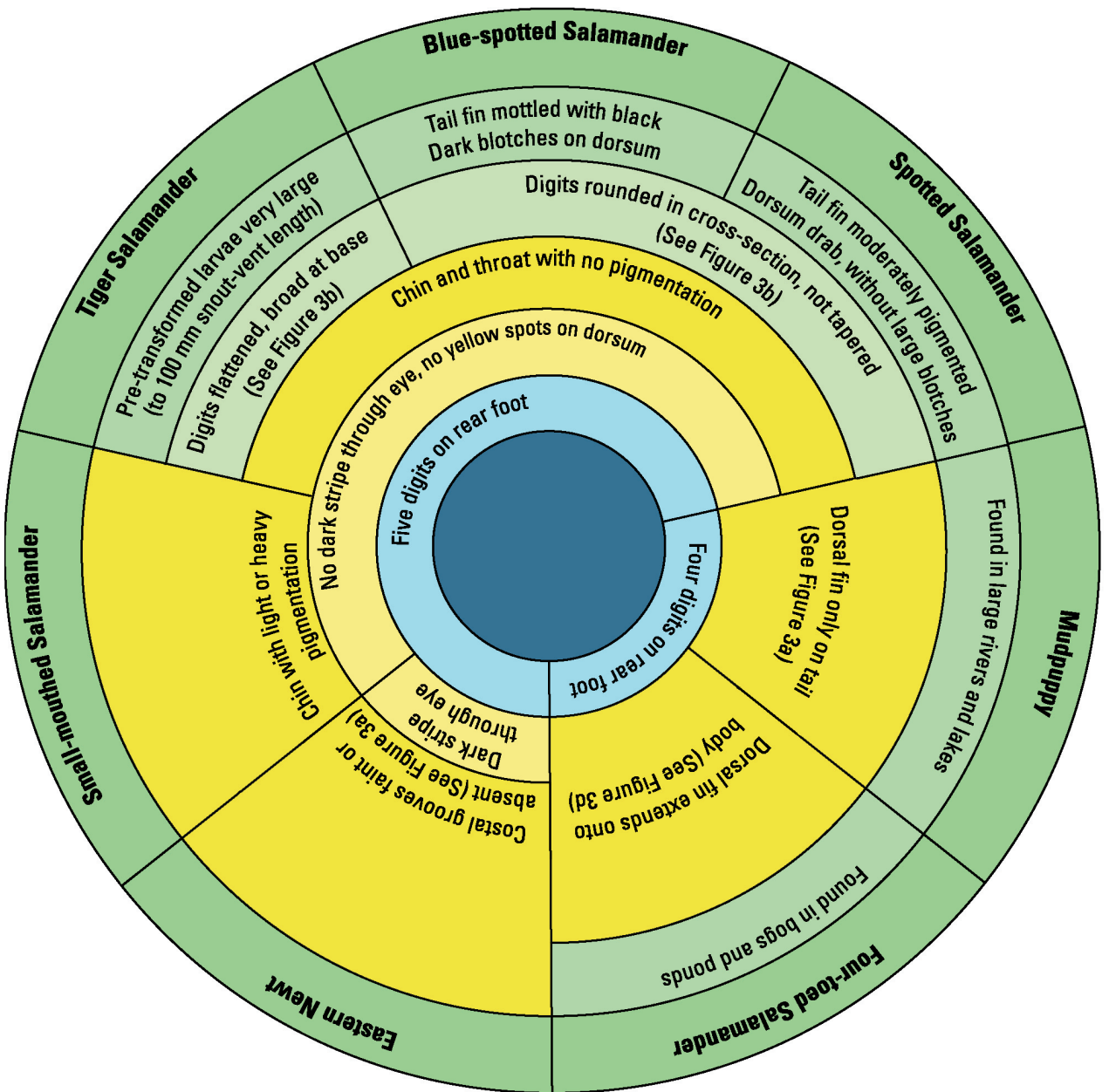


Figure 3. Field key to larval salamanders.

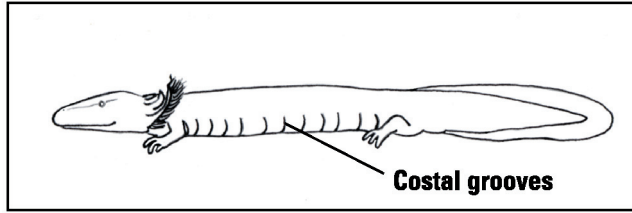


Figure 3a. Tail fin and costal grooves.

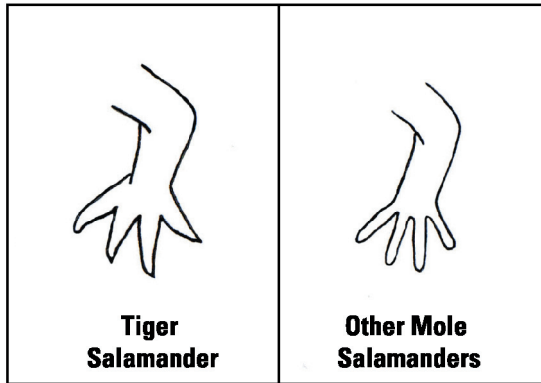


Figure 3b. Mole salamander digits (front feet shown).

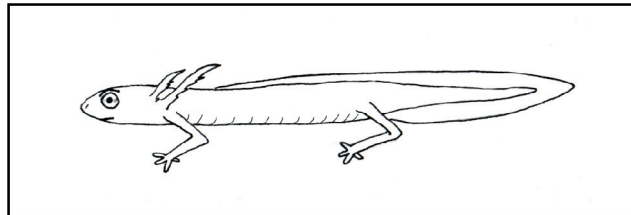


Figure 3c. Tail fin extending onto body (Four-toed Salamander).

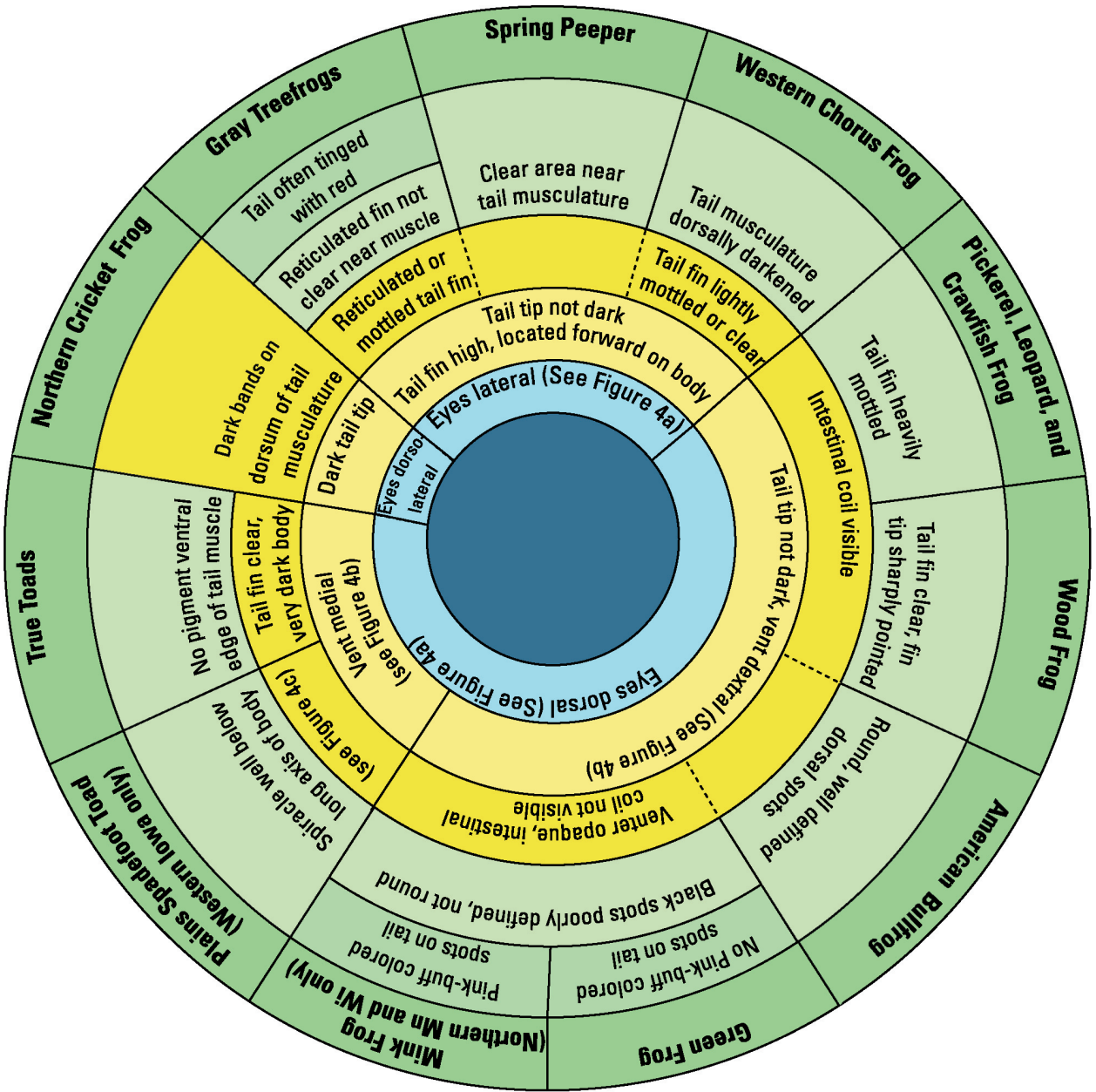


Figure 4. Field key to larval anurans.

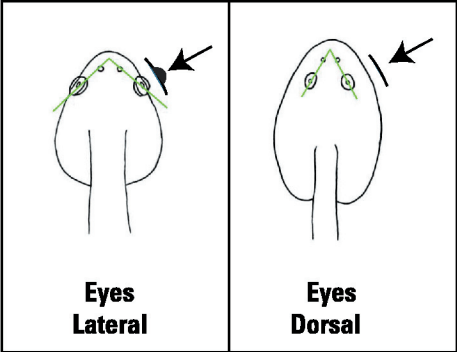


Figure 4a. Eye location (dorsal view).

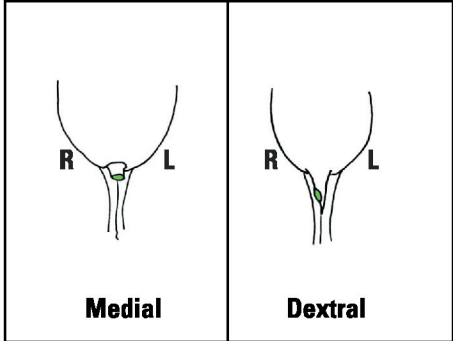


Figure 4b. Vent location (ventral view).

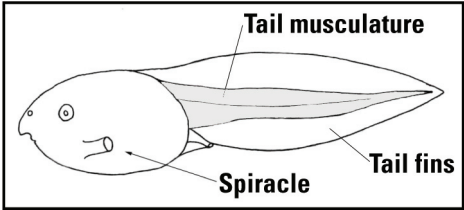


Figure 4c. Tadpole anatomy (lateral view).