

**SELECTED
NEP PILOTS**

Charlotte Harbor FL

Partnership for the Delaware Estuary DE

New Hampshire Estuaries NH

San Francisco Estuary CA

Massachusetts Bays MA

Albemarle-Pamlico NC

**INSIDE
THIS ISSUE:**

Pilots 1

CCSP 4.4 2

CHOW 2008 3

StormSmart Coasts 3

Public Listening Session 4

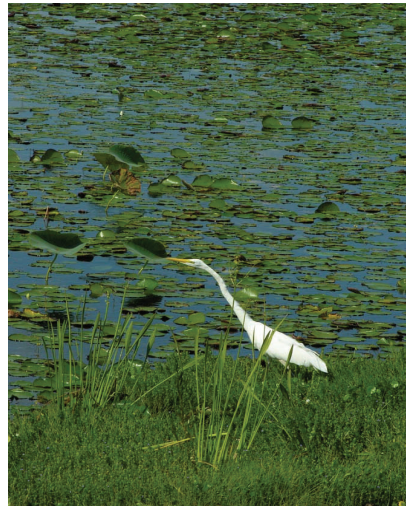
Contact Us 4



Program Pilots Selected

Why Pilots?

The CRE program is conducting pilot projects with several NEPs to advance the knowledge of coastal adaptation to climate change. The focus of the pilots is to learn what an NEP needs to assess their vulnerability to a range of climate effects, create an adaptation plan, and implement it. These lessons can then be used to better assist other NEPs to respond to the effects of climate change.



How were the Pilots chosen?

Eight applications were received and were evaluated on a number of qualitative and quantitative factors. The overarching criteria was how well the proposed project fit with our goal to create a viable program to assist NEPs as they adapt to the effects of climate change. In our selection, we attempted to choose a mix of NEPs in different geographic locations, sizes, and current efforts on climate adaptation.

Applications were evaluated by:

- COMMITMENT TO DEVELOPING ADAPTATION PLAN
- DEFINED OUTCOMES
- DEFINED NEEDS FROM EPA
- PRESENCE OF EXISTING OR POTENTIAL PARTNERSHIPS
- ABILITY TO ACHIEVE RESULTS IN TWO YEARS
- VALUE ADDED FROM EPA/CRE INVOLVEMENT
- TRANSFERABILITY OF PROJECT

Ready

is a quarterly newsletter for people working with and interested in the NEP program and its response to climate change. If you have items you'd like included or questions about the featured news please contact Kristen Goodrich at: Goodrich.Kristen@epa.gov.

Release of CCSP 4.4

A Preliminary Review of Adaptations for Climate-Sensitive Ecosystems and Resources features national estuaries in chapter seven. One of the key findings highlights that “*In the short time frame of a few decades, negative consequences of climate change may be avoided or minimized by enhanced efforts in managing traditional stressors of estuarine ecosystems through existing best management practices (BMPs).*” Exactly why CRE is just in time.

Read the report at:

<http://www.climatescience.gov/Library/sap/sap4-4/default.php>

Coastal Community Development

Disaster Resilience and Adaptation

Rhode Island Sea Grant has brought a collection of publications together, including a national summary of responses to sea level rise by state on their website at:

<http://seagrant.gso.uri.edu/ccd/haz.html>





Held June 3-5,
2008

Capitol Hill Ocean Week 2008

This year, on June 3-5, the Capitol Hill Ocean Week symposium focused on the effects of climate change on the oceans. Topics include the state of the science (acidification, habitats), impacts (to natural resources, to humans), and solutions (sequestration, ocean observations, alternative/cleaner energy), as well as legislative updates. EPA hosted a panel on “Climate Change Throughout the Watershed: From Upstream Adaptation to Ocean Mitigation” that featured the NEP’s own Dr. Lisa Beever of Charlotte Harbor Estuary as a panelist. Presentations are available at:

<http://www.nmsfocean.org/chow2008/>

StormSmart Coasts



The Massachusetts Office of Coastal Zone Management is working to develop a web site called "StormSmart Coasts." Tools to implement community land use plans including legal and technical assistance are only some of the proposed features of the website.

Visit the website at:

<http://www.mass.gov/czm/stormsmart/>

Designed to help people working in coastal communities address the challenges arising from sea level rise and climate change

Public Listening Session:

Sea Level Rise and Population Growth in North Carolina

The Albemarle and Pamlico Sounds region is among the top three areas most threatened by sea level rise in the US. With a growing population and rising sea level, community-based responses are needed to protect our coastal region.

APNEP and the Albemarle-Pamlico Conservation and Communities Collaborative are hosting seven public listening sessions throughout coastal NC this summer to learn what communities think about sea level rise and population growth in the region.

For more information contact Lucy Henry at lucy.henry@ncmail.net or Sharon Campbell at campbellsharon@bellsouth.net.



Our website is almost live! CRE is looking forward to bringing you the resources you need to be Ready.

Contact



John Wilson & Jeremy Martinich
U.S. Environmental Protection Agency
1200 Pennsylvania Avenue, NW
Washington, DC, 20460

E-mail: Wilson.John@epa.gov or
Martinich.Jeremy@epa.gov