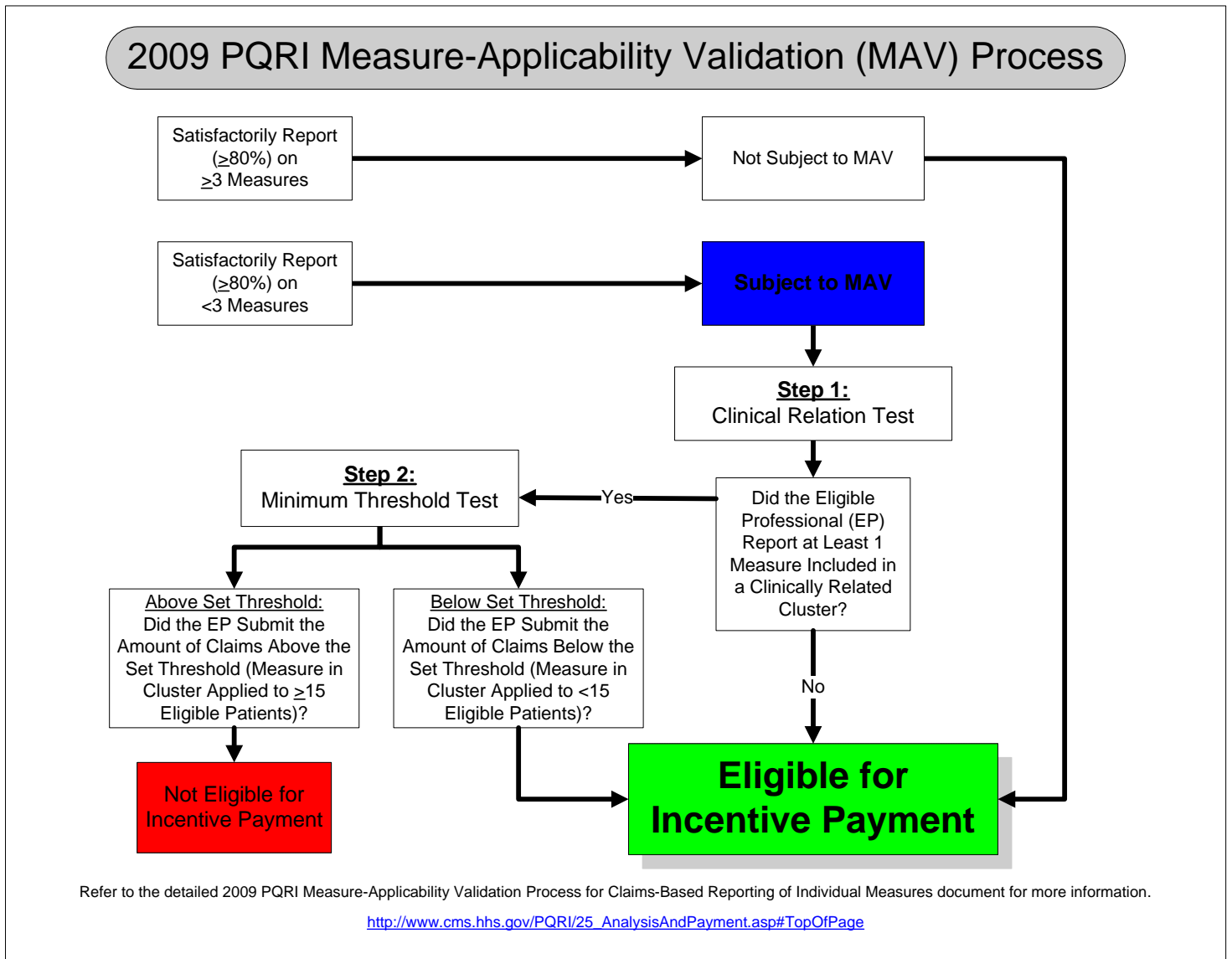


2009 PQRI Measure-Applicability Validation (MAV) Process



The 2009 PQRI Measure-Applicability Validation (MAV) Process flowchart displays the MAV processes for Eligible Professionals (EPs) who: 1) satisfactorily report (greater than or equal to 80 percent) on greater than or equal to three measures, and 2) satisfactorily report (greater than or equal to 80 percent) on less than three measures.

The MAV process for EPs who satisfactorily report (greater than or equal to 80 percent) on greater than or equal to three measures is displayed in a total of three text boxes as follows:

- Text box 1 Satisfactorily Report (greater than or equal to 80 percent) on greater than or equal to three Measures
- Text box 2 Not Subject to MAV
- Text box 3 Eligible for Incentive Payment

The MAV process for EPs who satisfactorily report (greater than or equal to 80 percent) on less than three measures is displayed in a total of nine text boxes as follows:

Text box 1 Satisfactorily Report (greater than or equal to 80 percent) on less than three Measures
Text box 2 Subject to MAV
Text box 3 Step 1: Clinical Relation Test
Text box 4 Did the Eligible Professional (EP) Report at Least 1 Measure Included in a Clinically Related Cluster? Based on the answer to this question, the MAV process follows one of two paths.

Path A – If the answer to the question in Text box 4 is *No*, the MAV process is complete and Text box 5 applies.

Text box 5 Eligible for Incentive Payment

Path B – If the answer to the question in Text box 4 is *Yes*, the MAV process moves to Text box 6.

Text box 6 Step 2: Minimum Threshold Test. From here, the MAV process follows one of two paths.

Path A – If the EP submitted an amount of claims below the set threshold, Text box 7 applies.

Text box 7 Below Set Threshold: Did the EP Submit the Amount of Claims Below the Set Threshold (Measure in Cluster Applied to less than 15 Eligible Patients)? If the answer to this question is *Yes*, the MAV process is complete and Text box 5 once again applies (i.e., Eligible for Incentive Payment).

Path B – If the EP submitted an amount of claims above the set threshold, Text box 8 applies.

Text box 8 Above Set Threshold: Did the EP Submit the Amount of Claims Above the Set Threshold (Measure in Cluster Applied to greater than or equal to 15 Eligible Patients)? If the answer to this question is *Yes*, the MAV process is complete and Text box 9 applies.

Text box 9 Not Eligible for Incentive Payment

Refer to the detailed *2009 PQRI Measure-Applicability Validation Process for Claims-Based Reporting of Individual Measures* document for more information at http://www.cms.hhs.gov/PQRI/25_AnalysisAndPayment.asp#TopOfPage.