

2006 MEDICAID MANAGED CARE ENROLLMENT REPORT SUMMARY STATISTICS AS OF JUNE 30, 2006

This report is composed annually by the Finance, Systems, and Budget Group (FSBG) of the Centers for Medicare & Medicaid Services (CMS). The Enrollment Report profiles Medicaid managed care programs on a plan-specific basis as of June 30, 2006. County level data is not collected. The information was collected from State Medicaid agencies and CMS Regional Offices. Data is presented for all States, the District of Columbia, Puerto Rico, and the Virgin Islands. Data is not presented for the following territories: Guam, Northern Mariana Islands, and American Samoa.

Contact Carolyn Lawson at 410-786-0704 or E-mail: carolyn.lawson@cms.hhs.gov, Loan Swisher at 410-786-4650 or E-mail: loan.swisher@cms.hhs.gov, or Joe Del Pilar at 410-786-0081 or E-mail: joseph.delpilar@cms.hhs.gov of the FSBG, if you have any questions concerning this report.

Medicaid Managed Care Enrollment Report as of June 30, 2006

Table of Contents

Managed Care Trends (1997-2006) and National Breakout of Managed Care Entities and Enrollment charts	Page 1
Total Medicaid Population (in percentages) Distribution by Year: Managed Care versus “Other” from 2001-2006	Page 2
Total Medicaid Population (in millions) Distribution by year: Managed Care versus “Other” from 2001-2006.....	Page 3
Medicaid Managed Care Penetration Rates by State.....	Page 4
Managed Care Entity Type Enrollment by State.....	Page 5
Number of Managed Care Entities by State	Page 6
Top 20 Medicaid Managed Care States	Page 7
Regional Breakout of Medicaid Managed Care Enrollment & States with Comprehensive Health Care Reform Demonstrations	Page 8
Prepaid Ambulatory Health Plans (PAHPs) and Enrollment by State ...	Page 9
Prepaid Inpatient Health Plans (PIHPs) and Enrollment by State.....	Page 10
Medicaid Dual Eligible Enrollment by State.....	Page 11
Dual Eligible Enrollment by Managed Care Entity Type	Page 12
Dual Eligible Enrollment by Plan.....	Page 13
Medicaid Managed Care Enrollment Plan level data by State	Page 20
Facts Sheet (Major changes from 6/30/2005-6/30/2006).....	Page 52
New Medicaid Managed Care Plans.....	Page 53
Terminated Medicaid Managed Care Plans.....	Page 54
Glossary.....	Page 55

NATIONAL SUMMARY OF MEDICAID MANAGED CARE PROGRAMS AND ENROLLMENT
AS OF JUNE 30, 2006

MANAGED CARE TRENDS				
YEAR	TOTAL MEDICAID POPULATION	MANAGED CARE POPULATION	OTHER POPULATION	% MANAGED CARE ENROLLMENT
2006	45,652,642	29,830,406	15,822,236	65.34%
2005	45,392,325	28,575,585	16,816,740	62.95%
2004	44,355,955	26,913,570	17,442,385	60.68%
2003	42,740,719	25,262,873	17,477,846	59.11%
2002	40,147,539	23,117,668	17,029,871	57.58%
2001	36,562,567	20,773,813	15,788,754	56.82%
2000	33,690,364	18,786,137	14,904,227	55.76%
1999	31,940,188	17,756,603	14,183,585	55.59%
1998	30,896,635	16,573,996	14,322,639	53.64%
1997	32,092,380	15,345,502	16,746,878	47.82%

These figures represent point-in-time enrollment as of June 30th for each reporting year.

The **unduplicated** managed care enrollment figures include enrollees receiving comprehensive benefits and limited benefits. This table also provides **unduplicated** national figures for the Total Medicaid population and Other population. The statistics also include individuals enrolled in State health care reform programs that expand eligibility beyond traditional Medicaid eligibility standards.

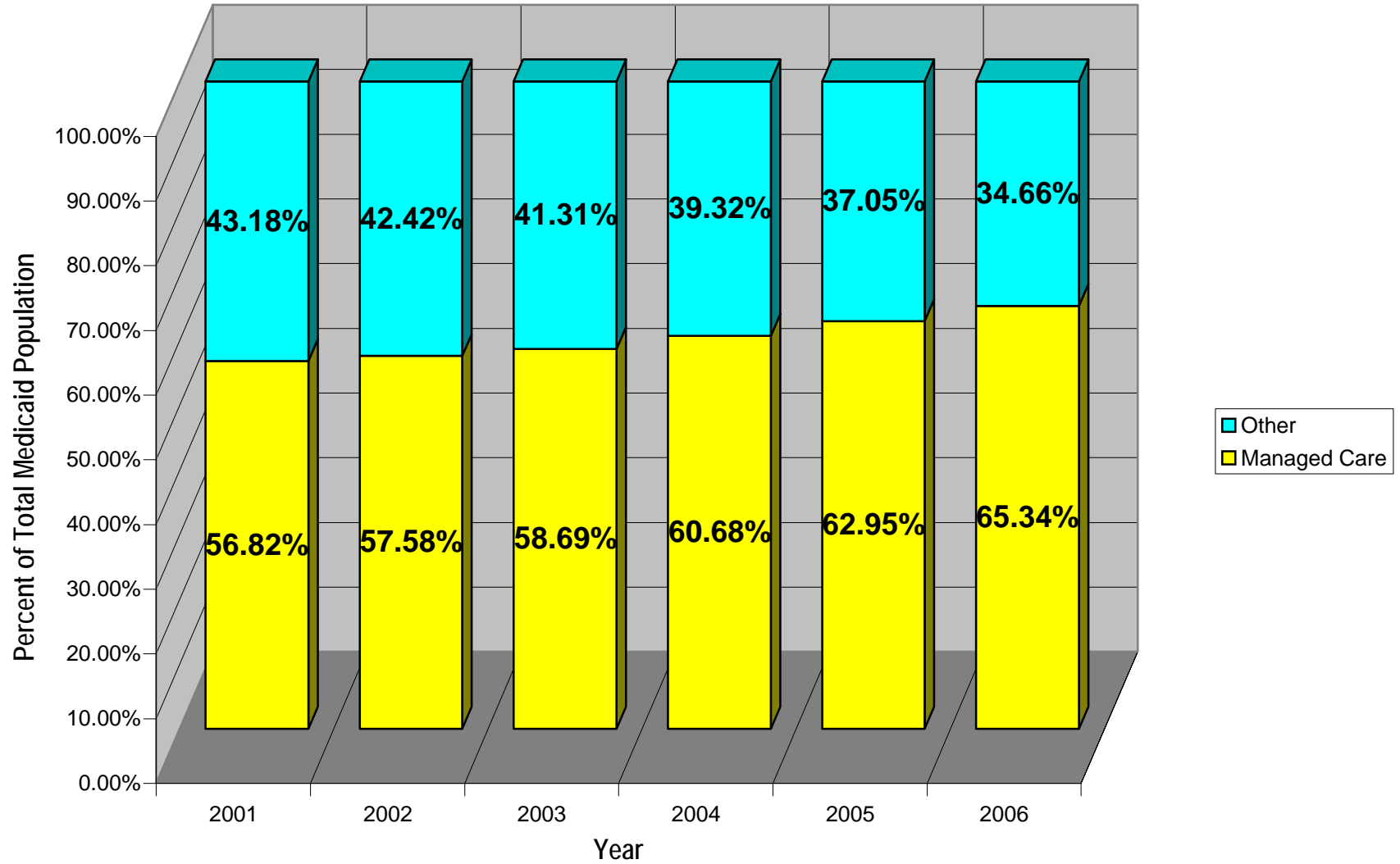
**NATIONAL BREAKOUT OF MANAGED CARE ENTITIES
AND ENROLLMENT AS OF JUNE 30, 2006**

MANAGED CARE ENTITY TYPE	# OF PLANS	# OF ENROLLEES
Health Insuring Organization	4	517,537
Commercial Managed Care Organization	177	9,936,268
Medicaid-only Managed Care Organization	133	9,362,928
Primary Care Case Management	33	6,467,252
Prepaid Inpatient Health Plan	109	8,244,584
Prepaid Ambulatory Health Plan	43	5,752,996
Program of ALL-inclusive Care for the Elderly	35	12,500
Other	11	2,509,586
TOTAL	545	42,803,651

This table provides **duplicated** figures by plan type. The total number of enrollees include **12,973,245** individuals who were individuals who were enrolled in more than one managed care plan. It also includes individuals enrolled in State health care reform programs that expand eligibility beyond traditional Medicaid eligibility standards.

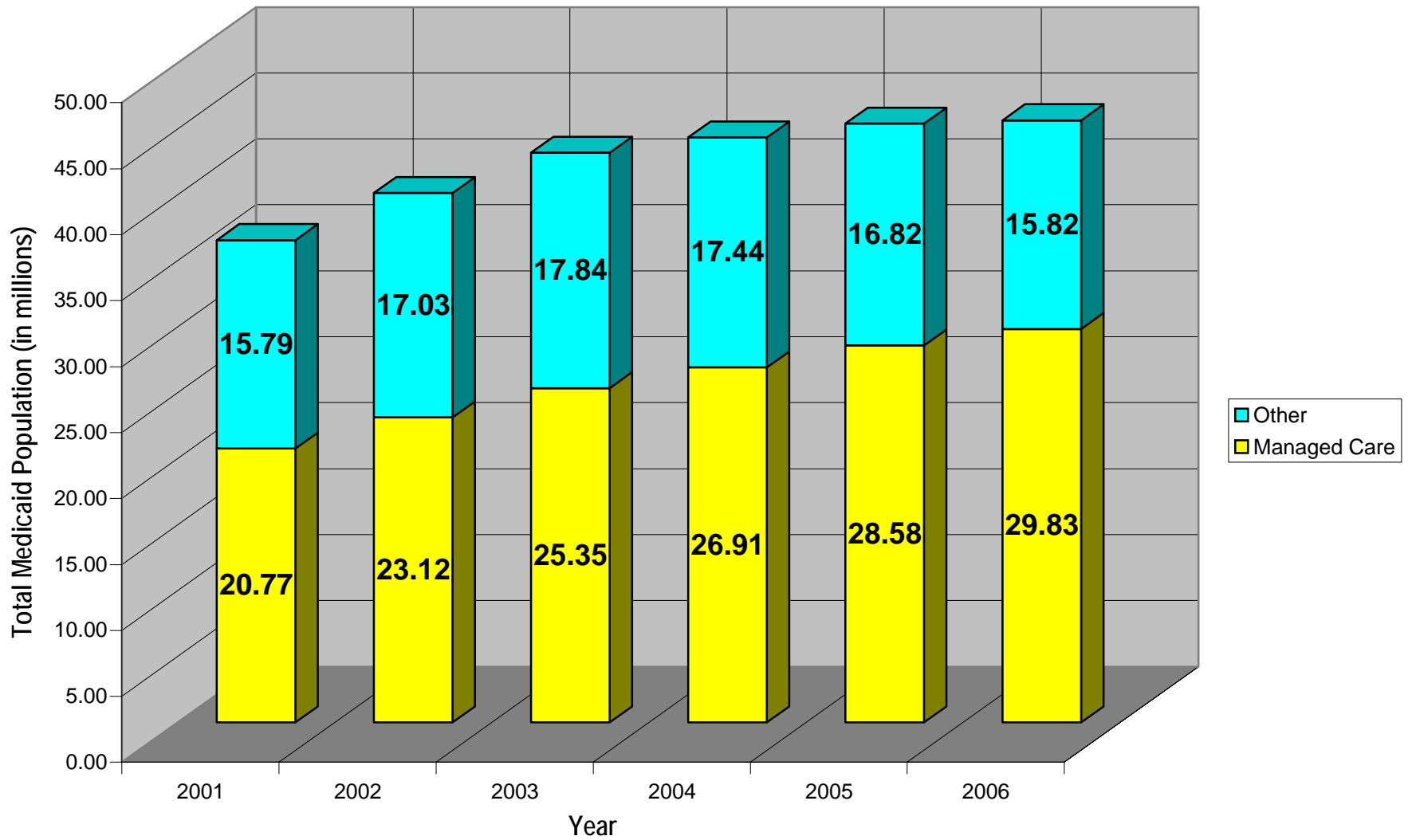
NATIONAL SUMMARY OF MEDICAID MANAGED CARE PROGRAMS AND ENROLLMENT

Total Annual Medicaid Population Distribution by Year: Managed Care v. Other
as of June 30, 2006



NATIONAL SUMMARY OF MEDICAID MANAGED CARE PROGRAMS AND ENROLLMENT

Total Annual Medicaid Population Distribution by Year: Managed Care v. Other
as of June 30, 2006



* Note: Numbers may not add up to totals due to rounding.

MEDICAID MANAGED CARE ENROLLMENT AS OF JUNE 30, 2006

ROW NUMBER	STATE	MEDICAID ENROLLMENT	MANAGED CARE ENROLLMENT	PERCENT IN MANAGED CARE
1	Alabama	785,949	497,539	63.30%
2	Alaska	100,720	0	0.00%
3	Arizona	977,094	875,492	89.60%
4	Arkansas	635,065	527,233	83.02%
5	California	6,508,528	3,276,440	50.34%
6	Colorado	391,227	372,046	95.10%
7	Connecticut	395,624	299,052	75.59%
8	Delaware	144,619	110,601	76.48%
9	Dist. of Columbia	137,517	93,182	67.76%
10	Florida	2,276,597	1,491,020	65.49%
11	Georgia	1,321,564	1,290,814	97.67%
12	Hawaii	203,345	162,650	79.99%
13	Idaho	171,795	139,875	81.42%
14	Illinois	1,929,200	140,100	7.26%
15	Indiana	839,101	604,891	72.09%
16	Iowa	329,637	285,163	86.51%
17	Kansas	283,383	161,600	57.03%
18	Kentucky	706,903	652,935	92.37%
19	Louisiana	969,193	689,609	71.15%
20	Maine	243,487	162,397	66.70%
21	Marvland	700,431	489,988	69.96%
22	Massachusetts	1,037,978	627,241	60.43%
23	Michigan	1,523,390	1,292,524	84.85%
24	Minnesota	583,564	371,429	63.65%
25	Mississippi	570,178	58,189	10.21%
26	Missouri	830,262	826,394	99.53%
27	Montana	82,832	55,382	66.86%
28	Nebraska	210,235	169,982	80.85%
29	Nevada	172,274	141,936	82.39%
30	New Hampshire	111,559	83,529	74.87%
31	New Jersey	858,177	595,626	69.41%
32	New Mexico	400,835	261,318	65.19%
33	New York	4,208,629	2,572,242	61.12%
34	North Carolina	1,299,624	843,441	64.90%
35	North Dakota	54,063	30,069	55.62%
36	Ohio	1,749,120	698,049	39.91%
37	Oklahoma	556,068	477,677	85.90%
38	Oregon	408,932	369,447	90.34%
39	Pennsylvania	1,816,812	1,568,237	86.32%
40	Puerto Rico	930,989	907,236	97.45%
41	Rhode Island	181,483	119,483	65.84%
42	South Carolina	690,391	139,412	20.19%
43	South Dakota	101,006	99,240	98.25%
44	Tennessee	1,190,407	1,190,407	100.00%
45	Texas	2,767,930	1,897,394	68.55%
46	Utah	208,501	181,173	86.89%
47	Vermont	133,466	86,347	64.70%
48	Virgin Islands	5,262	0	0.00%
49	Virginia	704,739	445,560	63.22%
50	Washington	990,321	858,052	86.64%
51	West Virginia	296,831	137,457	46.31%
52	Wisconsin	863,145	403,306	46.73%
53	Wyoming	62,660	0	0.00%
	TOTALS	45,652,642	29,830,406	65.34%

The unduplicated Medicaid enrollment figures include individuals in State health care reform programs that expand eligibility beyond traditional Medicaid eligibility standards. The unduplicated managed care enrollment figures includes enrollees receiving comprehensive and limited benefits.

NUMBER OF MANAGED CARE ENTITY ENROLLEES BY STATE AS OF JUNE 30, 2006

STATE	HIO	Commercial MCO	Medicaid-only MCO	PCCM	PIHP	PAHP	PACE	OTHER
Alabama	0	0	0	410,881	497,539	0	0	0
Alaska	0	0	0	0	0	0	0	97,353
Arizona	0	0	875,492	0	87,664	0	0	0
Arkansas	0	0	0	519,839	0	439,126	0	0
California	517,537	2,686,811	49,380	0	144	374,093	1,826	5,192
Colorado	0	0	80,927	39,749	346,064	0	980	0
Connecticut	0	209,554	89,498	0	0	0	0	0
Delaware	0	0	98,837	0	0	0	0	11,210
Dist of Columbia	0	0	89,912	0	3,270	0	0	0
Florida	0	546,410	203,769	676,185	192,302	349,100	121	67
Georgia	0	0	579,001	498,188	2,461	1,290,814	0	0
Hawaii	0	110,864	50,101	0	1,569	0	0	2,129
Idaho	0	0	0	139,875	0	0	0	0
Illinois	0	80,400	59,700	0	0	0	0	0
Indiana	0	0	537,496	67,395	0	0	0	0
Iowa	0	5,156	0	138,373	285,163	0	0	0
Kansas	0	0	79,234	82,181	0	0	185	0
Kentucky	0	0	141,691	304,444	0	652,935	0	0
Louisiana	0	0	0	689,609	0	0	0	0
Maine	0	0	0	162,397	0	0	0	0
Maryland	0	0	489,838	0	0	0	150	0
Massachusetts	0	120,949	238,188	268,104	289,406	0	1,388	0
Michigan	0	258,774	670,032	0	1,292,524	0	225	0
Minnesota	0	344,528	26,901	0	0	0	0	0
Mississippi	0	0	0	0	0	58,189	0	0
Missouri	0	99,950	253,265	0	0	473,017	162	0
Montana	0	0	0	55,382	0	0	0	0
Nebraska	0	31,221	0	38,308	0	0	0	169,982
Nevada	0	79,981	0	0	0	141,936	0	0
New Hampshire	0	0	0	0	0	83,529	0	0
New Jersey	0	213,835	381,791	0	0	0	0	0
New Mexico	0	186,144	58,025	0	261,318	0	271	0
New York	0	777,335	1,745,273	17,827	13,231	6,580	2,545	9,451
North Carolina	0	7,374	0	818,685	63,347	0	0	0
North Dakota	0	0	785	29,284	0	0	0	0
Ohio	0	0	697,475	0	0	0	574	0
Oklahoma	0	0	0	6,347	0	843,846	0	0
Oregon	0	27,136	247,479	10,102	335,216	362,937	623	357,734
Pennsylvania	0	1,109,313	0	296,066	1,190,693	33,127	958	0
Puerto Rico	0	907,236	0	0	776,121	0	0	0
Rhode Island	0	48,077	71,378	0	0	0	28	0
South Carolina	0	0	79,580	49,942	0	9,564	353	0
South Dakota	0	0	0	74,957	0	99,240	0	0
Tennessee	0	390,611	799,796	0	1,190,407	0	296	1,856,468
Texas	0	524,947	342,216	939,681	307,645	0	907	0
Utah	0	0	0	46,336	249,811	151,305	0	0
Vermont	0	0	86,347	0	0	0	0	0
Virgin Islands	0	0	0	0	0	0	0	0
Virginia	0	267,564	116,837	61,159	0	320,338	0	0
Washington	0	465,874	19,464	3,794	858,052	63,320	226	0
West Virginia	0	137,457	0	22,162	0	0	0	0
Wisconsin	0	298,767	103,220	0	637	0	682	0
Wyoming	0	0	0	0	0	0	0	0
TOTALS	517,537	9,936,268	9,362,928	6,467,252	8,244,584	5,752,996	12,500	2,509,586

This table provides duplicated figures that include enrollees receiving comprehensive and limited benefits. Total number of enrollees includes those who were enrolled in more than one managed care plan. Figures also include individuals enrolled in State health care reform programs that expand eligibility beyond traditional Medicaid eligibility standards.

NUMBER OF MANAGED CARE ENTITIES BY STATE AS OF JUNE 30, 2006

STATE	HIO	Commercial MCO	Medicaid-only MCO	PCCM	PIHP	PAHP	PACE	OTHER
Alabama	0	0	0	1	2	0	0	0
Alaska	0	0	0	0	0	0	0	1
Arizona	0	0	25	0	1	0	0	0
Arkansas	0	0	0	1	0	1	0	0
California	4	24	2	0	1	13	4	1
Colorado	0	0	2	1	6	0	1	0
Connecticut	0	2	2	0	0	0	0	0
Delaware	0	0	1	0	0	0	0	1
Dist of Columbia	0	0	3	0	1	0	0	0
Florida	0	13	1	1	3	5	1	2
Georgia	0	0	1	1	1	1	0	0
Hawaii	0	2	1	0	2	0	0	1
Idaho	0	0	0	1	0	0	0	0
Illinois	0	1	2	0	0	0	0	0
Indiana	0	0	5	1	0	0	0	0
Iowa	0	1	0	1	1	0	0	0
Kansas	0	0	1	1	0	0	1	0
Kentucky	0	0	1	1	0	1	0	0
Louisiana	0	0	0	1	0	0	0	0
Maine	0	0	0	1	0	0	0	0
Maryland	0	0	7	0	0	0	1	0
Massachusetts	0	2	2	1	1	0	6	0
Michigan	0	4	11	0	18	0	1	0
Minnesota	0	6	3	0	0	0	0	0
Mississippi	0	0	0	0	0	1	0	0
Missouri	0	3	4	0	0	1	1	0
Montana	0	0	0	1	0	0	0	0
Nebraska	0	1	0	1	0	0	0	1
Nevada	0	2	0	0	0	1	0	0
New Hampshire	0	0	0	0	0	1	0	0
New Jersey	0	2	3	0	0	0	0	0
New Mexico	0	2	1	0	1	0	1	0
New York	0	20	19	4	12	1	4	1
North Carolina	0	1	0	2	2	0	0	0
North Dakota	0	0	1	1	0	0	0	0
Ohio	0	0	8	0	0	0	2	0
Oklahoma	0	0	0	1	0	2	0	0
Oregon	0	2	11	1	9	8	1	1
Pennsylvania	0	11	0	1	28	1	4	0
Puerto Rico	0	15	0	0	2	0	0	0
Rhode Island	0	2	1	0	0	0	1	0
South Carolina	0	0	2	1	0	2	1	0
South Dakota	0	0	0	1	0	1	0	0
Tennessee	0	4	4	0	2	0	1	2
Texas	0	8	2	2	1	0	2	0
Utah	0	0	0	1	12	1	0	0
Vermont	0	0	1	0	0	0	0	0
Virgin Islands	0	0	0	0	0	0	0	0
Virginia	0	5	2	1	0	1	0	0
Washington	0	7	1	1	1	1	1	0
West Virginia	0	3	0	1	0	0	0	0
Wisconsin	0	34	3	0	2	0	1	0
Wyoming	0	0	0	0	0	0	0	0
TOTALS	4	177	133	33	109	43	35	11

MEDICAID MANAGED CARE ENROLLMENT AS OF 6/30/06

STATES 1-10

Rank	States	Waiver Type	Managed Care Enrollment
1	California	1915(b), 1115(a), 1932(a), Voluntary, PACE	3,276,440
2	New York	1115(a), Voluntary, PACE	2,572,242
3	Texas	1915(b), Concurrent 1915(b)/1915(c), PACE	1,897,394
4	Pennsylvania	1915(b), Voluntary, PACE	1,568,237
5	Florida	1915(b), Concurrent 1915(b)/1915(c), PACE	1,491,020
6	Michigan	1915(b), Concurrent 1915(b)/1915(c), PACE	1,292,524
7	Georgia	1915(b), 1932(a)	1,290,814
8	Tennessee	1115(a), PACE	1,190,407
9	Puerto Rico	Voluntary	907,236
10	Arizona	1115(a)	875,492
	Subtotal		16,361,806
	National Managed Care Grand Total		29,830,406
	Percentage		54.85%

STATES 11-20

11	Washington	1915(b), 1932(a), PACE	858,052
12	North Carolina	Concurrent 1915(b)/1915(c), 1932(a)	843,441
13	Missouri	1915(b), 1115(a), PACE	826,394
14	Ohio	1932(a), PACE	698,049
15	Louisiana	1932(a)	689,609
16	Kentucky	1915(b), 1115(a), 1932(a)	652,935
17	Massachusetts	1115(a), PACE	627,241
18	Indiana	1915(b)	604,891
19	New Jersey	1915(b), 1932(a)	595,626
20	Arkansas	1915(b)	527,233
	Subtotal		6,923,471
	National Managed Care Grand Total		29,830,406
	Percentage		23.21%

The **unduplicated** managed care enrollment figures include enrollees receiving comprehensive benefits and limited benefits.

REGIONAL BREAK-OUT OF MEDICAID MANAGED CARE ENROLLMENT AS OF JUNE 30, 2006

REGION	MEDICAID ENROLLMENT	MANAGED CARE ENROLLMENT	% REGION BENEFICIARIES ENROLLED IN MANAGED CARE	% NATIONAL MANAGED CARE ENROLLMENT
I - Boston	2,103,597	1,378,049	65.51%	4.62%
II - New York	6,003,057	4,075,104	67.88%	13.66%
III - Philadelphia	3,800,949	2,845,025	74.85%	9.54%
IV - Atlanta	8,841,613	6,163,757	69.71%	20.66%
V - Chicago	7,487,520	3,510,299	46.88%	11.77%
VI - Dallas	5,329,091	3,853,231	72.31%	12.92%
VII - Kansas City	1,653,517	1,443,139	87.28%	4.84%
VIII - Denver	900,289	737,910	81.96%	2.47%
IX - San Francisco	7,861,241	4,456,518	56.69%	14.94%
X - Seattle	1,671,768	1,367,374	81.79%	4.58%
TOTALS	45,652,642	29,830,406	65.34%	100.00%

The **unduplicated** managed care enrollment figures include enrollees receiving comprehensive benefits and limited benefits. This table also provides **unduplicated** Medicaid enrollment figures by region. The enrollment figures include individuals enrolled in State health care reform programs that expand eligibility beyond traditional Medicaid eligibility standards.

STATES WITH COMPREHENSIVE HEALTH CARE REFORM DEMONSTRATIONS AS OF JUNE 30, 2006

STATE	MEDICAID ENROLLMENT	EXPANSION ENROLLMENT	MANAGED CARE ENROLLMENT	% ENROLLED IN MANAGED CARE
Arizona	977,094	139,261	875,492	89.60%
California	6,508,528	0	3,276,440	50.34%
Delaware	144,619	15,372	110,601	76.48%
Hawaii	203,345	21,254	162,650	79.99%
Kentucky	706,903	0	652,935	92.37%
Maryland	700,431	0	489,988	69.96%
Massachusetts	1,037,978	107,112	627,241	60.43%
Minnesota	583,564	70,521	371,429	63.65%
Missouri	830,262	75,705	826,394	99.53%
New York	4,208,629	585,237	2,572,242	61.12%
Oklahoma	556,068	0	477,677	85.90%
Oregon	408,932	27,764	369,447	90.34%
Rhode Island	181,483	23,546	119,483	65.84%
Tennessee	1,190,407	38,533	1,190,407	100.00%
Utah	208,501	16,841	181,173	86.89%
Vermont	133,466	33,655	86,347	64.70%
Wisconsin	863,145	93,487	403,306	46.73%
TOTALS	19,443,355	1,248,288	12,793,252	65.80%

The **unduplicated** managed care enrollment figures include enrollees receiving comprehensive benefits and limited benefits. This table also provides **unduplicated** Medicaid and Expansion enrollment figures. The enrollment figures include individuals enrolled in State health care reform programs that expand eligibility beyond traditional Medicaid eligibility standards.

Number of Prepaid Ambulatory Health Plans (PAHPs) and Enrollment by State as of June 30, 2006

State	Medical-only	Medical-only Enrollees	Mental Health	Mental Health Enrollees	Substance Use Disorders	Substance Use Disorders Enrollees	Dental	Dental Enrollees	Transportation	Transportation Enrollees	Disease Management	Disease Management Enrollees
Arkansas									1	439,126		
California							13	374,093				
Florida							1	204,503	1	82,394	3	62,203
Georgia									1	1,290,814		
Kentucky									1	652,935		
Mississippi											1	58,189
Missouri									1	473,017		
Nevada									1	141,936		
New Hampshire											1	83,529
New York			1	6,580								
Oklahoma	1	366,169							1	477,677		
Oregon					1	7,496	7	355,441				
Pennsylvania											1	33,127
South Carolina	2	9,564										
South Dakota							1	99,240				
Utah									1	151,305		
Virginia									1	320,338		
Washington											1	63,320
Totals	3	375,733	1	6,580	1	7,496	22	1,033,277	9	4,029,542	7	300,368

A PAHP provides less than comprehensive services on an at-risk or other than state plan reimbursement basis; and does not provide, arrange for, or otherwise have responsibility for provision of any inpatient hospital or institutional services.

Number of Prepaid Inpatient Health Plans (PIHPs) and Enrollment by State as of June 30, 2006

<i>State</i>	<i># of Medical-only PIHPs</i>	<i>Medical-only Enrollees</i>	<i># of Mental Health (MH) PIHPs</i>	<i>MH PIHP Enrollees</i>	<i># of MH & SUD PIHPs</i>	<i>MH & SUD Enrollees</i>	<i>Long Term Care PIHPs</i>	<i>Long Term Care Enrollees</i>
Alabama	2	497,539						
Arizona					1	87,664		
Colorado	1	12,487	5	333,577				
California			1	144				
District of Columbia	1	3,270						
Florida	1	18,081	2	174,221				
Georgia			1	2,461				
Hawaii			2	1,569				
Iowa					1	285,163		
Massachusetts					1	289,406		
Michigan			18	1,292,524				
New York							12	13,231
New Mexico			1	261,318				
North Carolina					2	63,347		
Oregon			9	335,216				
Pennsylvania	3	119			25	1,190,574		
Puerto Rico					2	776,121		
Tennessee					2	1,190,407		
Texas					1	307,645		
Utah	3	71,189	9	178,622				
Washington			1	858,052				
Wisconsin					2	637		
Totals	11	602,685	49	3,437,704	37	4,190,964	12	13,231

A PIHP provides less than comprehensive services on an at-risk or other than state plan reimbursement basis; and provides, arranges for, or otherwise have responsibility for provision of any inpatient hospital or institutional services. *Note: We did not include a separate column for Substance Use Disorders (SUD) PIHPs on this chart because there were 0 enrollees in this managed care entity as of 6/30/06.

DUAL ELIGIBLE ENROLLMENT AS OF JUNE 30, 2006

State	Medicaid Dual Eligibles
Alabama	185,526
Alaska	11,622
Arizona	119,872
Arkansas	100,237
California	843,121
Colorado	62,898
Connecticut	64,510
Delaware	20,459
District of Columbia	13,910
Florida	476,829
Georgia	223,211
Hawaii	26,119
Idaho	24,782
Illinois	271,997
Indiana	99,944
Iowa	67,570
Kansas	48,320
Kentucky	142,518
Louisiana	157,327
Maine	90,991
Maryland	88,285
Massachusetts	216,932
Michigan	195,115
Minnesota	108,806
Mississippi	134,208
Missouri	161,462
Montana	17,728
Nebraska	33,422
Nevada	31,599
New Hampshire	22,280
New Jersey	147,184
New Mexico	51,494
New York	585,237
North Carolina	270,543
North Dakota	12,972
Ohio	231,710
Oklahoma	79,236
Oregon	63,612
Pennsylvania	305,949
Puerto Rico	194,763
Rhode Island	34,433
South Carolina	123,800
South Dakota	17,137
Tennessee	248,508
Texas	506,841
Utah	24,497
Vermont	27,166
Virginia	150,019
Washington	121,462
West Virginia	63,326
Wisconsin	200,761
Wyoming	8,404
National Total	7,530,654

This table provides an unduplicated number of Medicaid dual eligibles receiving full or partial Medicaid benefits.

DUAL ELIGIBLE ENROLLMENT BY MANAGED CARE ENTITY TYPE AS OF JUNE 30, 2006

MANAGED CARE ENTITY TYPES							
STATE	HIO	MCO	PCCM	PIHP	PAHP	PACE	OTHER
Alaska							7,525
Arizona		86,458					
California	99,773	57,982			10,679	1,680	5,191
Colorado		7,656	8,011	54,208		965	
Dist. of Columbia		297		14			
Florida		25,015			18	113	10
Georgia			999	2,006	135,596		
Idaho			13,911				
Indiana			28,333				
Iowa				27,598			
Kansas			209			175	
Kentucky		12,647			89,561		
Maryland						143	
Massachusetts		150				1,227	
Michigan						222	
Minnesota		42,198					
Missouri						143	
Mississippi					9,741		
Nebraska							19,171
Nevada					18,536		
New Jersey		12,516					
New Mexico						271	
New York		3,803	1,020	11,756	3,624	2,210	
North Carolina			39,585	12,854			
Ohio						43	
Oklahoma					63,560		
Oregon		28,448	2,274	44,949	46,506	603	52,312
Pennsylvania		1,944	350	137,801		866	
Puerto Rico		194,763		63,648			
Rhode Island						25	
South Carolina			4,291			353	
Tennessee		188,361		188,361		15	188,655
Texas		31,948		42,932		883	
Utah			5,560	29,977	18,157		
Vermont		15,804					
Washington		343		83,697		207	
Wisconsin		12,338				682	
TOTALS	99,773	722,671	104,543	699,801	395,978	10,826	272,864

This table provides duplicated figures that include enrollees receiving comprehensive and limited benefits. Total number of enrollees includes those who were enrolled in more than one managed care plan. Figures also include individuals enrolled in State health care reform programs that expand eligibility beyond traditional Medicaid eligibility standards.

DUAL ELIGIBLE ENROLLMENT BY PLAN AS OF 6/30/2006

State	Plan	Managed Care Entity	Dual Eligible Enrollment
AK	Non-Emergency Transportation	*FFS Transportation Broker	7,525
AZ	AZ Physicians IPA (HP)	Medicaid-only MCO	21,863
AZ	Care 1st Health Plan	Medicaid-only MCO	2,268
AZ	Cochise Co. Dept. of Health Services (PC)	Medicaid-only MCO	791
AZ	Department of Economic Security/Division of Developmental Disabilities (PC)	Medicaid-only MCO	3,966
AZ	Evercare Select (PC)	Medicaid-only MCO	6,041
AZ	Health Choice Arizona (HP)	Medicaid-only MCO	7,788
AZ	Maricopa County Health Plan (HP)	Medicaid-only MCO	3,479
AZ	Mercy Care Plan (HP)	Medicaid-only MCO	18,782
AZ	Mercy Care Plan (PC)	Medicaid-only MCO	6,866
AZ	Phoenix Health Plan/Community Connection (HP)	Medicaid-only MCO	5,285
AZ	Pima Health System (HP)	Medicaid-only MCO	2,768
AZ	Pima Health System (PC)	Medicaid-only MCO	3,272
AZ	Pinal County Long Term Care (PC)	Medicaid-only MCO	1,055
AZ	University Family Care (HP)	Medicaid-only MCO	1,390
AZ	Yavapai County Long Term Care (PC)	Medicaid-only MCO	844
CA	Access Dental Plan-LA	Dental PAHP	564
CA	Access Dental Plan-Sacramento	Dental PAHP	1,727
CA	Alameda Alliance for Health	Commercial MCO	2,471
CA	AltaMed Health Services Corporation	PACE	274
CA	American Health Guard-Dental Plan-LA	Dental PAHP	215
CA	Blue Cross of California-Sacramento	Commercial MCO	1,824
CA	Blue Cross of California-San Diego	Commercial MCO	402
CA	Blue Cross of California-TPMP	Commercial MCO	6,251
CA	Caloptima-Orange	HIO	60,683
CA	Care 1st /Sacramento	Commercial MCO	47
CA	Care 1st/San Diego	Commercial MCO	13
CA	Center for Elders Independence	PACE	319
CA	Central Coast Alliance For Health	HIO	14,243
CA	Community Dental Services/LA	Dental PAHP	113
CA	Community Dental Services/Sacramento	Dental PAHP	212
CA	Community Health Group-San Diego	Commercial MCO	1,566
CA	Contra Costa Health Plan	Commercial MCO	1,640
CA	Health Net-Sacramento	Commercial MCO	487
CA	Health Net-San Diego	Commercial MCO	251
CA	Health Net-TPMP	Commercial MCO	5,626
CA	Health Plan of San Joaquin	Commercial MCO	1,018
CA	Health Plan of San Mateo	MCO/COHS	14,276
CA	Inland Empire Health Plan	Commercial MCO	3,850
CA	Kaiser (Dental)-Sacramento	Dental PAHP	2
CA	Kaiser Foundation (North)	Commercial MCO	171
CA	Kaiser Foundation-Sacramento	Commercial MCO	1,485
CA	Kaiser Foundation-San Diego	Commercial MCO	896
CA	Kern Family Health Care	Commercial MCO	1,432
CA	LA Care Health Plan	Commercial MCO	8,272
CA	Liberty Dental Plan of CA/Sacramento	Dental PAHP	590
CA	Liberty Dental Plan of CA-LA	Dental PAHP	120
CA	Molina Medical Centers-Sacramento	Commercial MCO	312
CA	Molina Medical Centers-San Diego	Commercial MCO	760

DUAL ELIGIBLE ENROLLMENT BY PLAN AS OF 6/30/2006

State	Plan	Managed Care Entity	Dual Eligible Enrollment
CA	Molina Medical Centers-TPMP	Commercial MCO	797
CA	On Lok Senior Health Services	PACE	925
CA	Partnership Health Plan	HIO	15,648
CA	Positive Healthcare/AHF Healthcare Centers	Medicaid-only MCO	400
CA	Safeguard Dental Inc.	Dental PAHP	1,837
CA	San Francisco Health Plan	Commercial MCO	1,195
CA	Santa Barbara Regional Health Authority	HIO	9,199
CA	Santa Clara Family Health Plan	Commercial MCO	1,926
CA	Senior Care Action Network (SCAN)	Social HMO	5,191
CA	Sutter Senior Care	PACE	162
CA	UHP Healthcare-Dental	Dental PAHP	878
CA	Universal Care-Dental-LA	Dental PAHP	839
CA	Western Dental Services-LA	Dental PAHP	1,755
CA	Western Dental Services-Sacramento	Dental PAHP	1,827
CA	Western Health Advantage-Sacramento	Commercial MCO	614
CO	Access Behavioral Care	Mental Health (MH) PIHP	8,863
CO	Behavioral Healthcare, Inc.	Mental Health (MH) PIHP	8,491
CO	Colorado Access	Medicaid-only MCO	4,348
CO	Colorado Health Partnerships	Mental Health (MH) PIHP	19,845
CO	Denver Health and Hospital Authority	Medicaid-only MCO	3,308
CO	Foothills Behavioral Health	Mental Health (MH) PIHP	6,464
CO	Northeast Behavioral Health	Mental Health (MH) PIHP	8,491
CO	Primary Care Physician Program	PCCM Provider	8,011
CO	Rocky Mountain Health Plan Authority	Medical-only PIHP	2,054
CO	Total Long Term Care	PACE	965
DC	AMERIGROUP	Medicaid-only MCO	128
DC	DC Chartered Health Plan, Incorporated	Medicaid-only MCO	106
DC	Health Right Incorporated	Medicaid-only MCO	63
DC	Health Services For Children with Special Needs	Medical-only PIHP	14
FL	Adult Day Health Care	*Adult Day Health Care Facility	10
FL	Amerigroup Florida, Inc.	Commercial MCO	5,149
FL	Atlantic Dental, Inc.	Dental PAHP	18
FL	Buena Vista	Commercial MCO	591
FL	Citrus Health Care	Commercial MCO	250
FL	Florida PACE Centers	PACE	113
FL	HealthEase	Medicaid-only MCO	5,622
FL	Humana Family	Commercial MCO	2,411
FL	Preferred Medical Plan, Inc.	Commercial MCO	392
FL	StayWell	Commercial MCO	5,161
FL	The Public Health Trust of Dade County / JMH	Commercial MCO	483
FL	Total Health Choice	Commercial MCO	10
FL	United Healthcare	Commercial MCO	2,415
FL	United Healthcare dba Evercare	Commercial MCO	2,237
FL	Universal Healthcare	Commercial MCO	39
FL	Vista South Florida	Commercial MCO	255
GA	Georgia Better Health Care	PCCM Provider	999
GA	Non-Emergency Transportation	Transportation PAHP	135,596
GA	Preadmission Screening and Annual Resident Review (PASARR)	Mental Health (MH) PIHP	2,006
IA	Iowa Plan For Behavioral Health	MH/SUD PIHP	27,598

DUAL ELIGIBLE ENROLLMENT BY PLAN AS OF 6/30/2006

State	Plan	Managed Care Entity	Dual Eligible Enrollment
ID	Healthy Connections	PCCM Provider	13,911
IN	Medicaid Select	PCCM Provider	28,333
KS	HealthConnect Kansas	PCCM Provider	209
KS	Via Christi Healthcare Outreach Programs for Elders	PACE	175
KY	Human Service Transportation	Transportation PAHP	89,561
KY	Passport Health Plan	Medicaid-only MCO	12,647
MA	Elder Service Plan at Fallon Community Health Plan	PACE	192
MA	Elder Service Plan of Cambridge Health Alliance	PACE	107
MA	Elder Service Plan of East Boston	PACE	295
MA	Elder Service Plan of Harbor Health Services, Inc.	PACE	197
MA	Elder Service Plan of the North Shore, Inc.	PACE	322
MA	Neighborhood Health Plan	Commercial MCO	150
MA	Uphams Elder Service Plan	PACE	114
MD	Hopkins Elder Plus	PACE	143
MI	Henry Ford Health System-Center for Senior Independence	PACE	222
MN	Blue Plus	Commercial MCO	10,424
MN	First Plan Blue	Commercial MCO	982
MN	Health Partners	Commercial MCO	3,781
MN	Itasca Medical Care	Medicaid-only MCO	560
MN	Medica	Commercial MCO	12,092
MN	Metropolitan Health Plan	Commercial MCO	1,312
MN	PrimeWest Health System	Medicaid-only MCO	2,163
MN	South Country Health Alliance	Medicaid-only MCO	2,241
MN	UCARE	Comprehensive MCO	8,643
MO	Alexian Brothers Community Services	PACE	143
MS	McKesson	Disease Management PAHP	9,741
NC	Carolina Access	PCCM Provider	7,799
NC	Community Care of North Carolina (Access II/III)	PCCM Provider	31,786
NC	Piedmont Cardinal Health Plan	MH/SUD PIHP	11,569
NC	Piedmont Cardinal Health Plan (Innovations)	MH/SUD PIHP	1,285
NE	Magellan Behavioral Health	Specialty Physician Case Management (SPCM)	19,171
NJ	AmeriChoice of New Jersey, Inc.	Commercial MCO	2,753
NJ	AMERIGROUP New Jersey, Inc.	Medicaid-only MCO	1,382
NJ	Health Net of New Jersey, Inc.	Medicaid-only MCO	1,019
NJ	Horizon NJ Health	Medicaid-only MCO	6,028
NJ	University Health Plans, Inc.	Commercial MCO	1,334
NM	Total Community Care (PACE)	PACE	271
NV	Logisticare	Transportation PAHP	18,536
NY	AmeriChoice of New York/Medicaid Advantage	Commercial MCO	128
NY	Broome County MC	PCCM Provider	49
NY	CarePlus Connections	LTC PIHP	35
NY	Comprehensive Care Management (CCCM)	PACE	1,648
NY	Eddy Senior Care	PACE	64
NY	GHI/Medicaid Advantage	Commercial MCO	509
NY	Guildnet	LTC PIHP	3,414
NY	Health Advantage/Elant Choice	LTC PIHP	101
NY	Hebrew Hospital Home/CO-OP Care Plan	LTC PIHP	401
NY	HIP Health Plan/Medicaid Advantage	Commercial MCO	2,445

DUAL ELIGIBLE ENROLLMENT BY PLAN AS OF 6/30/2006

State	Plan	Managed Care Entity	Dual Eligible Enrollment
NY	HomeFirst	LTC PIHP	1,430
NY	Independent Care Systems	LTC PIHP	409
NY	Independent Living For Seniors	PACE	249
NY	Liberty Health Advantage/Medicaid Advantage	Commercial MCO	172
NY	Long Island Health Partners/Broadlawn Health Partners	LTC PIHP	544
NY	Managed Health Inc/Medicaid Advantage	Commercial MCO	8
NY	Mohawk Valley Network/Senior Network Health	LTC PIHP	375
NY	Neighborhood Health Provider/Medicaid Advantage	Commercial MCO	540
NY	NYS Catholic Health Plan/Fidelis/Medicaid Advantage	Commercial MCO	1
NY	OMH/Partial Capitation	Mental Health (MH) PAHP	3,624
NY	PACE CNY	PACE	249
NY	Partners In Community Care	LTC PIHP	116
NY	Physician Case Management Program	PCCM Provider	955
NY	Senior Health Partners	LTC PIHP	492
NY	Southern Tier Priority	PCCM Provider	16
NY	Total Aging in Place	LTC PIHP	126
NY	VNS Choice	LTC PIHP	4,313
OH	Concordia Care	PACE	43
OK	LogistiCare	Transportation PAHP	63,560
OR	Accountable Behavioral Health	Mental Health (MH) PIHP	3,013
OR	Capitol Dental Care Inc.	Dental PAHP	12,707
OR	Care Oregon	Medicaid-only MCO	9,747
OR	Cascade Comprehensive Care	Medicaid-only MCO	651
OR	Central Oregon Independent Health Solutions	Medicaid-only MCO	2,058
OR	Clackamas County Mental Health	Mental Health (MH) PIHP	3,512
OR	Deschutes County CDO	Substance Use Disorder (SUD) PAHP	643
OR	Doctors of the Oregon Coast South	Medicaid-only MCO	1,174
OR	Douglas County IPA	Commercial MCO	1,345
OR	FamilyCare (Mental Health)	Mental Health (MH) PIHP	690
OR	FamilyCare Health Plans	Commercial MCO	1,290
OR	Greater Oregon Behavioral Health, Inc.	Mental Health (MH) PIHP	3,796
OR	Hayden Family Dentistry	Dental PAHP	2,063
OR	Inter-Community Health Network	Medicaid-only MCO	1,789
OR	Jefferson Behavioral Health	Mental Health (MH) PIHP	7,975
OR	Lane Care MHO	Mental Health (MH) PIHP	4,255
OR	Lane Individual Practice Association	Medicaid-only MCO	2,927
OR	Managed Dental Care of Oregon	Dental PAHP	990
OR	Marion Polk Community Health Plan	Medicaid-only MCO	3,778
OR	Mid Valley Behavioral Care Network	Mental Health (MH) PIHP	7,749
OR	Mid-Rogue Independent Practice Assoc.	Medicaid-only MCO	785
OR	Multicare Dental	Dental PAHP	2,449
OR	Multnomah County Verity	Mental Health (MH) PIHP	10,137
OR	Non-Emergency Transportation	*FFS Transportation Broker	52,312
OR	Northwest Dental Services	Dental PAHP	8,844
OR	Oregon Dental Service	Dental PAHP	10,831
OR	Oregon Health Management Service	Medicaid-only MCO	414
OR	PCCM	PCCM Provider	2,274
OR	Providence Elder Place	PACE	603

DUAL ELIGIBLE ENROLLMENT BY PLAN AS OF 6/30/2006

State	Plan	Managed Care Entity	Dual Eligible Enrollment
OR	Providence Health Assurance	Medicaid-only MCO	1,649
OR	Tuality Health Care	Medicaid-only MCO	841
OR	Washington County Health (Mental Health)	Mental Health (MH) PIHP	3,822
OR	Willamette Dental	Dental PAHP	7,979
PA	Access Plus Program	PCCM Provider	350
PA	AmeriChoice of Pennsylvania	Commercial MCO	166
PA	AmeriHealth HMO, Inc./AmeriHealth Mercy Health Plan	Commercial MCO	156
PA	AmeriHealth HMO, Inc./AmeriHealth Mercy Health Plan - VOL	Commercial MCO	3
PA	Community LIFE	PACE	233
PA	County of Adams - Community Care Behavioral Health	MH/SUD PIHP	887
PA	County of Allegheny - Community Care Behavioral Health	MH/SUD PIHP	19,904
PA	County of Armstrong - Value Behavioral Health of PA	MH/SUD PIHP	1,472
PA	County of Beaver - Value Behavioral Health of PA	MH/SUD PIHP	3,004
PA	County of Berks - Community Care Behavioral Health	MH/SUD PIHP	4,780
PA	County of Bucks - Magellan Behavioral Health	MH/SUD PIHP	5,273
PA	County of Butler - Value Behavioral Health of PA	MH/SUD PIHP	2,096
PA	County of Chester - Community Care Behavioral Health	MH/SUD PIHP	3,012
PA	County of Cumberland - Community Behavioral Healthcare Network of PA, Inc.	MH/SUD PIHP	1,716
PA	County of Dauphin - Community Behavioral Healthcare Network of PA, Inc.	MH/SUD PIHP	3,473
PA	County of Delaware - Magellan Behavioral Health	MH/SUD PIHP	6,806
PA	County of Fayette - Value Behavioral Health of PA	MH/SUD PIHP	4,311
PA	County of Indiana - Value Behavioral Health of PA	MH/SUD PIHP	1,516
PA	County of Lancaster - Community Behavioral Healthcare Network of PA, Inc.	MH/SUD PIHP	5,267
PA	County of Lawrence - Value Behavioral Health of PA	MH/SUD PIHP	1,892
PA	County of Lebanon - Community Behavioral Healthcare Network of PA, Inc.	MH/SUD PIHP	1,491
PA	County of Lehigh - Magellan Behavioral Health	MH/SUD PIHP	4,931
PA	County of Montgomery - Magellan Behavioral Health	MH/SUD PIHP	5,593
PA	County of Northampton - Magellan Behavioral Health	MH/SUD PIHP	3,423
PA	County of Perry - Community Behavioral Healthcare Network of PA, Inc.	MH/SUD PIHP	501
PA	County of Philadelphia - Community Behavioral Health	MH/SUD PIHP	42,181
PA	County of Washington - Value Behavioral Health of PA	MH/SUD PIHP	3,269
PA	County of Westmoreland - Value Behavioral Health of PA	MH/SUD PIHP	5,652
PA	County of York - Community Care Behavioral Health	MH/SUD PIHP	4,242
PA	Gateway Health Plan, Inc.	Commercial MCO	409
PA	Gateway Health Plan, Inc. -VOL	Commercial MCO	35

DUAL ELIGIBLE ENROLLMENT BY PLAN AS OF 6/30/2006

State	Plan	Managed Care Entity	Dual Eligible Enrollment
PA	Health Partners of Philadelphia	Commercial MCO	226
PA	Keystone Mercy Health Plan	Commercial MCO	468
PA	LIFE - Beaver County	Medical-only PIHP	46
PA	LIFE - Geisinger	Medical-only PIHP	39
PA	LIFE - Pittsburg	PACE	228
PA	LIFE - St. Agnes	PACE	147
PA	LIFE - University of Pennsylvania	PACE	258
PA	Senior LIFE Johnstown	Medical-only PIHP	24
PA	Unison Health Plan / MedPLUS	Commercial MCO	244
PA	Unison Health Plan/MedPlus - VOL	Commercial MCO	58
PA	UPMC Health Plan, Inc./UPMC for You	Commercial MCO	162
PA	UPMC Health Plan, Inc./UPMC for You - VOL	Commercial MCO	17
PA	Value Behavioral Health of PA (Greene County)	MH/SUD PIHP	1,000
PR	Alianza de Medicos de Sur Este, Inc.	Commercial MCO	1,074
PR	American Health Medicare	Commercial MCO	1,664
PR	APS Healthcare	MH/SUD PIHP	40,294
PR	Auxilio Platino	Commercial MCO	61
PR	COSVIMed	Commercial MCO	158
PR	FHC Healthcare	MH/SUD PIHP	23,354
PR	First Medical Health Plans	Commercial MCO	1,427
PR	Humana Health Plans of Puerto Rico, Inc.	Commercial MCO	18,326
PR	Humana Puerto Rico	Commercial MCO	10,507
PR	MAPFRE Puerto Rico	Commercial MCO	1,194
PR	MCS Health Management Options, Inc.	Commercial MCO	19,981
PR	MCS Life	Commercial MCO	24,632
PR	MMM Healthcare Inc.	Commercial MCO	44,860
PR	PMC Medicare Choice	Commercial MCO	36,548
PR	San Judas Medical Services	Commercial MCO	438
PR	Triple S	Commercial MCO	10,064
PR	Triple-S, Inc.	Commercial MCO	23,829
RI	PACE Organization of Rhode Island	PACE	25
SC	Medical Homes Network	PCCM Provider	4,291
SC	Palmetto SeniorCare (PACE)	PACE	353
TN	Doral Dental of Tennessee, LLC	*Dental Benefit Manager	294
TN	First Health Services Corporation	*Pharmacy Benefit Manager	188,361
TN	John Deere	Commercial MCO	13,533
TN	Memphis Managed Care Corp. (TLC)	Medicaid-only MCO	25,064
TN	Preferred Health Partnership/PHP	Medicaid-only MCO	19,774
TN	Premier Behavioral Systems of TN	MH/SUD PIHP	84,460
TN	Alexian Brothers Community Services	PACE	15
TN	TennCare Select	Medicaid-only MCO	61,888
TN	Tennessee Behavioral Health, Inc.	MH/SUD PIHP	103,901
TN	UAHC Omnicare	Medicaid-only MCO	14,843
TN	Unison Health Plan (BHP)	Commercial MCO	8,273
TN	Volunteer State Health Plan (Bluecare)	Commercial MCO	40,708
TN	Windsor (VHP Community Care)	Commercial MCO	4,278
TX	Amerigroup- STAR+PLUS	Medicaid-only MCO	12,407
TX	Bienvivir Senior Health Service	PACE	748
TX	Evercare	Commercial MCO	19,541
TX	Jan Werner Adult Day Care Center	PACE	135

DUAL ELIGIBLE ENROLLMENT BY PLAN AS OF 6/30/2006

State	Plan	Managed Care Entity	Dual Eligible Enrollment
TX	ValueOptions	MH/SUD PIHP	42,932
UT	Bear River Mental Health	Mental Health (MH) PIHP	1,349
UT	Central Utah Mental	Mental Health (MH) PIHP	856
UT	Davis Mental Health	Mental Health (MH) PIHP	1,788
UT	Four Corners Mental Health	Mental Health (MH) PIHP	562
UT	Healthy U	Medical-only PIHP	3,237
UT	IHC Health Plans Inc.	PCCM Provider	5,560
UT	Molina Healthcare of Utah (Molina Plus)	Medical-only PIHP	455
UT	Molina Healthcare of Utah (Molina)	Medical-only PIHP	4,851
UT	Non-Emergency Transportation	Transportation PAHP	18,157
UT	Northeastern Counseling Center	Mental Health (MH) PIHP	479
UT	Southwest Mental Health	Mental Health (MH) PIHP	1,806
UT	Valley Mental Health	Mental Health (MH) PIHP	8,903
UT	Wasatch Mental Health	Mental Health (MH) PIHP	3,405
UT	Weber Mental Health	Mental Health (MH) PIHP	2,286
VT	Global Commitment to Health	Medicaid-only MCO	15,804
WA	Evercare Premier	Commercial MCO	52
WA	Molina	Commercial MCO	289
WA	Providence ElderPlace - Seattle	PACE	207
WA	Regence Blue Shield	Commercial MCO	2
WA	Regional Support Networks	Mental Health (MH) PIHP	83,697
WI	Abri Health Plan--SSI	Commercial MCO	82
WI	Community Care Health Plan	Commercial MCO	86
WI	Community Care Organization	PACE	682
WI	Community Health Partnership--Partnership	Commercial MCO	736
WI	Community Living Alliance	Commercial MCO	225
WI	Elder Care of Dane County--Partnership	Medicaid-only MCO	522
WI	Family Care	Commercial MCO	7,680
WI	Independent Care Health Plan--SSI	Commercial MCO	2,642
WI	Network Health Plan--SSI	Commercial MCO	46
WI	Managed Health Services	Commercial MCO	294
WI	United Health Care of WI	Commercial MCO	25
Total			2,306,456

* Indicates the structure of the Managed Care Entity is "Other" and not considered a PCCM, MCO, HIO, PIHP, PAHP or PACE.

Medicaid Managed Care Program Summary

June 30, 2006

State	Plan Name	Managed Care Entity	Reimbursement Arrangement	Operating Authority	Geographic Area Served	Number of Enrollees
AK	Non-Emergency Transportation	*FFS Transportation Broker	Fee-For-Service	1915(b)	Statewide	97,353
AL	Maternity Care Program	Medical-only PIHP	Risk-based Capitation	1915(b)	Statewide	19,702
AL	Partnership Hospital Program	Medical-only PIHP	Risk-based Capitation	1915(a) - 1902(a)(4)	Statewide	477,837
AL	Patient 1st	PCCM	Fee-For-Service	1915(b)	Statewide	410,881
AR	Connect Care	PCCM	Fee-For-Service	1915(b)	Statewide	519,839
AR	Non-Emergency Transportation	Transp PAHP	Risk-based Capitation	1915(b)	Statewide	439,126
AZ	AZ Physicians IPA (Family Planning Extension)	Medicaid MCO	Risk-based Capitation	1115	Apache, Cochise, Coconino, Graham, Greenlee, La Paz, Maricopa, Mohave, Navajo, Pima, Santa Cruz, Yavapai, Yuma	2,129
AZ	AZ Physicians IPA (HP)	Medicaid MCO	Risk-based Capitation	1115	Apache, Cochise, Coconino, Graham, Greenlee, LaPaz, Maricopa, Mohave, Navajo, Pima, Santa Cruz, Yavapai, Yuma	273,249
AZ	Care 1st Health Plan	Medicaid MCO	Risk-based Capitation	1115	Maricopa	28,874
AZ	Care 1st Health Plan (Family Planning Extension)	Medicaid MCO	Risk-based Capitation	1115	Maricopa	402
AZ	Cochise Co. Dept. of Health Services (PC)	Medicaid MCO	Risk-based Capitation	1115	Cochise, Graham, Greenlee	903
AZ	Department of Economic Security/Childrens Medical and Dental Program (Family Planning Extension)	Medicaid MCO	Risk-based Capitation	1115	Statewide	0
AZ	Department of Economic Security/Childrens Medical and Dental Program (HP)	Medicaid MCO	Risk-based Capitation	1115	Statewide	9,773
AZ	Department of Economic Security/Division of Developmental Disabilities (PC)	Medicaid MCO	Risk-based Capitation	1115	Statewide	17,910
AZ	Department of Health Services (Behavioral Health)	MH/SUD PIHP	Risk-based Capitation	1115	Apache, Cochise, Coconino, Gila, Graham, Greenlee, LaPaz, Maricopa, Mohave, Navajo, Pima, Pinal, Santa Cruz, Yavapai, Yuma	87,664
AZ	Evercare Select (PC)	Medicaid MCO	Risk-based Capitation	1115	Apache, Coconino, La Paz, Maricopa, Mohave, Navajo, Yuma	6,883
AZ	Health Choice Arizona (Family Planning Extension)	Medicaid MCO	Risk-based Capitation	1115	Apache, Coconino, Gila, Maricopa, Mohave, Navajo, Pima, Pinal	1,230
AZ	Health Choice Arizona (HP)	Medicaid MCO	Risk-based Capitation	1115	Apache, Coconino, Gila, Maricopa, Mohave, Navajo, Pima, Pinal	110,313
AZ	Maricopa County Health Plan (Family Planning Extension)	Medicaid MCO	Risk-based Capitation	1115	Maricopa	129
AZ	Maricopa County Health Plan (HP)	Medicaid MCO	Risk-based Capitation	1115	Maricopa	34,420
AZ	Mercy Care Plan (Family Planning Extension)	Medicaid MCO	Risk-based Capitation	1115	Cochise, Graham, Greenlee, La Paz, Maricopa, Pima, Yavapai, Yuma	2,749

AZ	Mercy Care Plan (HP)	Medicaid MCO	Risk-based Capitation	1115	Cochise, Graham, Greenlee, La Paz, Maricopa, Pima, Yavapai, Yuma	241,969
AZ	Mercy Care Plan (PC)	Medicaid MCO	Risk-based Capitation	1115	Maricopa	8,544
AZ	Phoenix Health Plan/Community Connection (Family Planning Extension)	Medicaid MCO	Risk-based Capitation	1115	Gila, Maricopa, Pinal	885
AZ	Phoenix Health Plan/Community Connection (HP)	Medicaid MCO	Risk-based Capitation	1115	Gila, Maricopa, Pinal	91,721
AZ	Pima Health System (Family Planning Extension)	Medicaid MCO	Risk-based Capitation	1115	Pima, Santa Cruz	242
AZ	Pima Health System (HP)	Medicaid MCO	Risk-based Capitation	1115	Pima, Santa Cruz	27,300
AZ	Pima Health System (PC)	Medicaid MCO	Risk-based Capitation	1115	Pima, Santa Cruz	3,915
AZ	Pinal County Long Term Care (PC)	Medicaid MCO	Risk-based Capitation	1115	Gila, Pinal	1,213
AZ	University Family Care (Family Planning Extension)	Medicaid MCO	Risk-based Capitation	1115	Pima	15
AZ	University Family Care (HP)	Medicaid MCO	Risk-based Capitation	1115	Pima	9,785
AZ	Yavapai County Long Term Care (PC)	Medicaid MCO	Risk-based Capitation	1115	Yavapai	939
CA	Access Dental Plan-LA	Dental PAHP	Risk-based Capitation	1915(a)	Los Angeles	56,075
CA	Access Dental Plan-Sacramento	Dental PAHP	Risk-based Capitation	1915(b), 1932(a)	Sacramento	52,249
CA	Alameda Alliance for Health	Commercial MCO	Risk-based Capitation	1915(b), 1932(a)	Alameda	76,718
CA	AltaMed Health Services Corporation	PACE	Risk-based Capitation	PACE	LA	326
CA	American Health Guard-Dental Plan-LA	Dental PAHP	Risk-based Capitation	1915(a)	Los Angeles	10,051
CA	Blue Cross of California-Sacramento	Commercial MCO	Risk-based Capitation	1915(b), 1932(a)	Sacramento	83,056
CA	Blue Cross of California-San Diego	Commercial MCO	Risk-based Capitation	1915(b), 1932(a)	San Diego	22,440
CA	Blue Cross of California-TPMP	Commercial MCO	Risk-based Capitation	1915(b), 1932(a)	Alameda, Contra Costa, Fresno, San Francisco, San Joaquin, Santa Clara, Stanislaus, Tulare	371,829
CA	Caloptima-Orange	HIO	Risk-based Capitation	1915(b)	Orange	294,516
CA	Care 1st /Sacramento	Commercial MCO	Risk-based Capitation	1915(b), 1932(a)	City	3,363
CA	Care 1st/San Diego	Commercial MCO	Risk-based Capitation	1915(b), 1932(a)	San Diego	1,271
CA	Center for Elders Independence	PACE	Risk-based Capitation	PACE	Alameda	380
CA	Central Coast Alliance For Health	HIO	Risk-based Capitation	1915(b)	Monterey, Santa Cruz	84,534

CA	Community Dental Services/LA	Dental PAHP	Risk-based Capitation	1915(b), 1932(a)	LA	4,336
CA	Community Dental Services/Sacramento	Dental PAHP	Risk-based Capitation	1915(b), 1932(a)	Sacramento	12,998
CA	Community Health Group-San Diego	Commercial MCO	Risk-based Capitation	1915(b), 1932(a)	San Diego	70,030
CA	Contra Costa Health Plan	Commercial MCO	Risk-based Capitation	1915(b), 1932(a)	Contra Costa	43,058
CA	Health Net-Sacramento	Commercial MCO	Risk-based Capitation	1915(b), 1932(a)	Sacramento	29,001
CA	Health Net-San Diego	Commercial MCO	Risk-based Capitation	1915(b), 1932(a)	San Diego	14,063
CA	Health Net-TPMP	Commercial MCO	Risk-based Capitation	1915(b), 1932(a)	Fresno, Kern, LA, Stanislaus, Tulare	535,441
CA	Health Plan of San Joaquin	Commercial MCO	Risk-based Capitation	1915(b), 1932(a)	San Joaquin	56,546
CA	Health Plan of San Mateo	*MCO/COHS	Risk-based Capitation	1915(b)	San Mateo	48,578
CA	Inland Empire Health Plan	Commercial MCO	Risk-based Capitation	1915(b), 1932(a)	Riverside, San Bernardino	248,055
CA	Kaiser (Dental)-Sacramento	Dental PAHP	Risk-based Capitation	1915(b), 1932(a)	Sacramento	3
CA	Kaiser Foundation (North)	Commercial MCO	Risk-based Capitation	1915(a)	Marin, Sonoma	1,767
CA	Kaiser Foundation-Sacramento	Commercial MCO	Risk-based Capitation	1915(b)	Sacramento	20,134
CA	Kaiser Foundation-San Diego	Commercial MCO	Risk-based Capitation	1915(b), 1932(a)	San Diego	9,570
CA	Kern Family Health Care	Commercial MCO	Risk-based Capitation	1915(b), 1932(a)	Kern	93,591
CA	LA Care Health Plan	Commercial MCO	Risk-based Capitation	1915(b), 1932(a)	Los Angeles	735,675
CA	Liberty Dental Plan of CA/Sacramento	Dental PAHP	Risk-based Capitation	1915(b), 1932(a)	Sacramento	25,044
CA	Liberty Dental Plan of CA-LA	Dental PAHP	Risk-based Capitation	1915(b), 1932(a)	LA	4,104
CA	Molina Medical Centers-Sacramento	Commercial MCO	Risk-based Capitation	1915(b), 1932(a)	Sacramento	17,044
CA	Molina Medical Centers-San Diego	Commercial MCO	Risk-based Capitation	1915(b), 1932(a)	San Diego	48,897
CA	Molina Medical Centers-TPMP	Commercial MCO	Risk-based Capitation	1915(b), 1932(a)	Riverside, San Bernardino	87,886
CA	On Lok Senior Health Services	PACE	Risk-based Capitation	PACE	San Francisco	954
CA	Partnership Health Plan	HIO	Risk-based Capitation	1915(b)	Napa, Solano, Yolo	84,686
CA	Positive Healthcare/AHF Healthcare Centers	Medicaid MCO	Risk-based Capitation	1915(a)	Los Angeles	802

CA	Safeguard Dental Inc.	Dental PAHP	Risk-based Capitation	1915(a)	Los Angeles, Riverside, San Bernardino	33,208
CA	San Francisco City & CO/Family Mosaic	*Emotional and Mental Health Support PIHP	Risk-based Capitation	1915(a)	San Francisco	144
CA	San Francisco Health Plan	Commercial MCO	Risk-based Capitation	1915(b), 1932(a)	San Francisco	32,823
CA	Santa Barbara Regional Health Authority	HIO	Risk-based Capitation	1915(b)	Santa Barbara	53,801
CA	Santa Clara Family Health Plan	Commercial MCO	Risk-based Capitation	1915(b), 1932(a)	Santa Clara	71,334
CA	Senior Care Action Network (SCAN)	*Social HMO	Risk-based Capitation	1115	LA, Riverside, San Bernardino	5,192
CA	Sutter Senior Care	PACE	Risk-based Capitation	PACE	Sacramento, Yolo	166
CA	UHP Healthcare-Dental	Dental PAHP	Risk-based Capitation	1915(a)	Los Angeles, San Bernardino	16,855
CA	Universal Care-Dental-LA	Dental PAHP	Risk-based Capitation	1915(a)	LA	29,240
CA	Western Dental Services-LA	Dental PAHP	Risk-based Capitation	1915(a)	Los Angeles, Riverside, Sacramento, San Bernardino	54,309
CA	Western Dental Services-Sacramento	Dental PAHP	Risk-based Capitation	1915(b), 1932(a)	Sacramento	75,621
CA	Western Health Advantage-Sacramento	Commercial MCO	Risk-based Capitation	1915(b), 1932(a)	Sacramento	13,219
CO	Access Behavioral Care	Mental Health PIHP	Risk-based Capitation	1915(b)	Denver	66,651
CO	Behavioral Healthcare, Inc.	Mental Health PIHP	Risk-based Capitation	1915(b)	East Metro Denver	44,165
CO	Colorado Access	Medicaid MCO	Risk-based Capitation	1915(a)	Adams, Alamosa, Arapahoe, Bent, Boulder, Broomfield, Clear Creek, Conejos, Costilla, Crowley, Custer, Denver, Douglas, El Paso, Elbert, Fremont, Gilpin, Huerfano, Jefferson, Kiowa, Larimer, Lincoln, Logan, Mineral, Morgan, Otero, Park, Phillips, Prowers, Pueblo, Rio Grande, Saguache, Sedgewick, Teller, Washington, Weld, Yuma	59,170
CO	Colorado Health Partnerships	Mental Health PIHP	Risk-based Capitation	1915(b)	Alamosa, Archuleta, Baca, Bent, Chaffee, Conejos, Costilla, Crowley, Custer, Delta, Dolores, Eagle, El Paso, Fremont, Garfield, Grand, Gunnison, Hinsdale, Huerfano, Jackson, Kiowa, La Plata, Lake, Las Animas, Mesa, Mineral, Moffat, Montezuma, Montrose, Otero, Ouray, Park, Pitkin, Prowers, Pueblo, Rio Blanco, Rio Grande, Routt, Saguache, San Juan, San Miguel, Summit, Teller	135,902
CO	Denver Health and Hospital Authority	Medicaid MCO	Risk-based Capitation	1915(a)	Adams, Arapahoe, Denver, Jefferson	21,757
CO	Foothills Behavioral Health	Mental Health PIHP	Risk-based Capitation	1915(b)	Boulder, Broomfield, Clear Creek, Gilpin, Jefferson	42,694
CO	Northeast Behavioral Health	Mental Health PIHP	Risk-based Capitation	1915(b)	Cheyenne, Elbert, Kit Carson, Larimer, Lincoln, Logan, Morgan, Phillips, Sedgewick, Washington, Weld, Yuma	44,165
CO	Primary Care Physician Program	PCCM	Fee-For-Service	1905(t)	Statewide	39,749

CO	Rocky Mountain Health Plan Authority	Medical-only PIHP	Non-risk Capitation	1915(a)	Delta, Mesa, Montrose, Ouray, Rio Blanco, San Miguel	12,487
CO	Total Long Term Care	PACE	Risk-based Capitation	PACE	Adams, Arapahoe, Denver, Jefferson	980
CT	Anthem Blue Care Family Plan	Commercial MCO	Risk-based Capitation	1915(b)	Statewide	124,891
CT	Community Health Network of Connecticut	Medicaid MCO	Risk-based Capitation	1915(b)	Statewide	55,306
CT	HealthNet - Healthy Options	Commercial MCO	Risk-based Capitation	1915(b)	Statewide	84,663
CT	WellCare Health Plan - Preferred One	Medicaid MCO	Risk-based Capitation	1915(b)	Statewide	34,192
DC	AMERIGROUP	Medicaid MCO	Risk-based Capitation	1932(a)	Statewide	39,647
DC	DC Chartered Health Plan, Incorporated	Medicaid MCO	Risk-based Capitation	1932(a)	Statewide	37,086
DC	Health Right Incorporated	Medicaid MCO	Risk-based Capitation	1932(a)	Statewide	13,179
DC	Health Services For Children with Special Needs	Medical-only PIHP	Risk-based Capitation	1915(a)	Statewide	3,270
DE	Delaware Physicians Care, Inc	Medicaid MCO	Risk-based Capitation	1115	Statewide	98,837
DE	Diamond State Partners	*Fee for Service Model	Fee-For-Service	1115	Statewide	11,210
FL	Access Behavioral Health, Inc.	Mental Health PIHP	Risk-based Capitation	1915(b)/(c)	Escambia, Okaloosa, Santa Rosa, Walton	32,573
FL	Adult Day Health Care	*Adult Day Health Care Facility	Non-risk Capitation	1915(b)	Lee, Palm Beach	10
FL	AIDS Healthcare Foundation	Disease Management PAHP	Non-risk Capitation	1915(b)	Statewide	4,740
FL	Alzheimer's Waiver Service Provider	*Community Care for the Elderly Agencies	Other	1915(b)/(c)	Broward, Dade, Palm Beach, Pinellas	57
FL	Amerigroup Florida, Inc.	Commercial MCO	Risk-based Capitation	1915(b)	Brevard, Broward, Dade, Hillsborough, Lee, Manatee, Orange, Osceola, Palm Beach, Pasco, Pinellas, Polk, Sarasota, Seminole	146,345
FL	Atlantic Dental, Inc.	Dental PAHP	Risk-based Capitation	1915(b)	Dade	204,503
FL	Buena Vista	Commercial MCO	Risk-based Capitation	1915(b)	Broward, Dade, Gadsden, Hendry, Jefferson, Leon, Liberty, Madison, Palm Beach, Wakulla	27,871
FL	Citrus Health Care	Commercial MCO	Risk-based Capitation	1915(b)	Hillsborough, Pasco, Pinellas, Polk	13,374
FL	Commission for the Transportation of the Disadvantaged	Transp PAHP	Other	1915(b)	Statewide	82,394
FL	Florida Health Partners, Inc.	Mental Health PIHP	Risk-based Capitation	1915(b)	Brevard, Hardee, Highlands, Hillsborough, Manatee, Orange, Osceola, Pasco, Pinellas, Polk, Seminole	141,648
FL	Florida PACE Centers	PACE	Risk-based Capitation	PACE	33125, 33127, 33128, 33129, 33130, 33131, 33132, 33135, 33136, 33137, 33138, 33139, 33140, 33141, 33142, 33147, 33150, 33154, 33161, 33167, 33168, 33181	121

FL	Florida: A Healthy State	Disease Management PAHP	Non-risk Capitation	1915(b)	Statewide	54,212
FL	HealthEase	Medicaid MCO	Risk-based Capitation	1915(b)	Brevard, Broward, Calhoun, Citrus, Dade, Duval, Escambia, Gadsden, Highlands, Hillsborough, Jefferson, Lake, Leon, Liberty, Madison, Manatee, Marion, Martin, Orange, Osceola, Palm Beach, Pasco, Pinellas, Polk, Putnam, Santa Rosa, Sarasota, Seminole, Volus, Wakulla	203,769
FL	Healthy Palm Beaches	Commercial MCO	Risk-based Capitation	1915(b)	Palm Beach	4,604
FL	Humana Family	Commercial MCO	Risk-based Capitation	1915(b)	Broward, Dade, Palm Beach	49,600
FL	LifeMasters	Disease Management PAHP	Non-risk Capitation	1915(b)	Area 1, Area 2, Area 3, Area 4, Area 5, Area 6, Area 7	3,251
FL	MediPass	PCCM	Fee-For-Service	1915(b)	Statewide	676,185
FL	Preferred Medical Plan, Inc.	Commercial MCO	Risk-based Capitation	1915(b)	Broward, Dade	15,684
FL	Provider Service Network	Hospital Based Network PIHP	Fee-For-Service	1915(b)	Broward, Dade	18,081
FL	StayWell	Commercial MCO	Risk-based Capitation	1915(b)	Brevard, Broward, Dade, Hernando, Hillsborough, Lee, Manatee, Orange, Osceola, Palm Beach, Pasco, Pinellas, Polk, Sarasota, Seminole	179,331
FL	The Public Health Trust of Dade County / JMH	Commercial MCO	Risk-based Capitation	1915(b)	Dade	13,932
FL	Total Health Choice	Commercial MCO	Risk-based Capitation	1915(b)	Broward, Dade	450
FL	United Healthcare	Commercial MCO	Risk-based Capitation	1915(b)	Brevard, Broward, Dade, Hernando, Highlands, Hillsborough, Lake, Manatee, Orange, Osceola, Palm Beach, Pasco, Pinellas, Polk, Seminole, Volusia	76,700
FL	United Healthcare dba Evercare	Commercial MCO	Risk-based Capitation	1915(b)	Broward, Dade	2,434
FL	Universal Healthcare	Commercial MCO	Risk-based Capitation	1915(b)	Gadsden, Hernando, Jefferson, Leon, Wakulla	1,815
FL	Vista South Florida	Commercial MCO	Risk-based Capitation	1915(b)	Dade	14,270
GA	Georgia Better Health Care	PCCM	Fee-For-Service	1932(a)	Statewide	498,188
GA	Georgia Healthy Families	Medicaid MCO	Risk-based Capitation	1932(a)	Atlanta Region, Central Region	579,001
GA	Non-Emergency Transportation	Transp PAHP	Risk-based Capitation	1915(b)	Statewide	1,290,814
GA	Preadmission Screening and Annual Resident Review (PASARR)	Mental Health PIHP	Risk-based Capitation	1915(b)	Statewide	2,461
HI	Aloha Care	Medicaid MCO	Risk-based Capitation	1115	Hawaii, Kauai, Maui, Oahu	50,101
HI	Child & Adolescent Mental Health Division, Department of Health	Mental Health PIHP	Risk-based Capitation	1115	Statewide	668
HI	Early Intervention Programs, Department of Health	*Target Case Management for Mental Health Services	Risk-based Capitation	1115	Statewide	2,129

HI	HMSA-Behavior Health for SMI	Mental Health PIHP	Risk-based Capitation	1115	Statewide	901
HI	HMSA-Medical	Commercial MCO	Risk-based Capitation	1115	Hawaii, Kauai, Lanai, Maui, Molokai, Oahu	90,556
HI	Kaiser Permanente	Commercial MCO	Risk-based Capitation	1115	Maui, Oahu	20,308
IA	Coventry Health Care	Commercial MCO	Risk-based Capitation	1932(a)	Black Hawk, Butler	5,156
IA	Iowa Plan For Behavioral Health	MH/SUD PIHP	Risk-based Capitation	1915(b)	Statewide	285,163
IA	Medipass	PCCM	Fee-For-Service	1932(a)	Adair, Adams, Allamakee, Appanoose, Audubon, Benton, Black Hawk, Boone, Bremer, Buchanan, Buena Vista, Butler, Calhoun, Carroll, Cass, Cedar, Cerro Gordo, Cherokee, Chickasaw, Clarke, Clay, Clayton, Clinton, Crawford, Dallas, Davis, Decatur, Delaware, Dickinson, Dubuque, Emmet, Fayette, Floyd, Franklin, Fremont, Greene, Grundy, Guthrie, Hamilton, Hancock, Hardin, Harrison, Henry, Howard, Humboldt, Ida, Jackson, Jasper, Jefferson, Johnson, Jones, Keokuk, Kossuth, Lee, Linn, Lucas, Lyon, Madison, Mahaska, Marion, Marshall, Mills, Mitchell, Monona, Monroe, Montgomery, Muscatine, O'Brien, Osceola, Page, Palo Alto, Plymouth, Pocahontas, Polk, Pottawattamie, Sac, Scott, Shelby, Sioux, Story, Tama, Taylor, Union, Van Buren, Warren, Wayne, Webster, Winnebago, Winneshiek, Woodbury, Worth, Wright	138,373
ID	Healthy Connections	PCCM	Fee-for-Service	1915(b)	Statewide	139,875
IL	Amerigroup Illinois Inc.	Medicaid MCO	Risk-based Capitation	1915(a)	Cook	35,500
IL	Family Health Network	Medicaid MCO	Risk-based Capitation	1915(a)	Cook	24,200
IL	Harmony Health Plan	Commercial MCO	Risk-based Capitation	1915(a)	Cook, Madison, Perry, Randolph, St. Clair, Washington	80,400
IN	Caresource Indiana	Medicaid MCO	Risk-based Capitation	1915(b)	Statewide	108,653
IN	Harmony Health Plans of Indiana	Medicaid MCO	Risk-based Capitation	1915(b)	Statewide	76,672
IN	Managed Health Services (MHS)	Medicaid MCO	Risk-based Capitation	1915(b)	Statewide	193,922
IN	MDwise	Medicaid MCO	Risk-based Capitation	1915(b)	Statewide	121,117
IN	Medicaid Select	PCCM	Fee-For-Service	1915(b)	Statewide	67,395
IN	Molina Health Care	Medicaid MCO	Risk-based Capitation	1915(b)	Statewide	37,132

					Allen, Anderson, Atchison, Barber, Barton, Bourbon, Brown, Butler, Chautauqua, Cherokee, Cloud, Coffey, Cowley, Crawford, Dickinson, Doniphan, Douglas, Elk, Ellis, Ellsworth, Ford, Franklin, Geary, Greenwood, Harper, Harvey, Jackson, Jefferson, Jewell, Johnson, Kingman, Labette, Leavenworth, Lincoln, Linn, Logan, Lyon, Marshall, McPherson, Miami, Mitchell, Montgomery, Morris, Morton, Nemaha, Neosho, Osage, Ottawa, Phillips, Pottawatomie, Pratt, Rawlins, Riley, Rooks, Rush, Russell, Saline, Sedgwick, Seward, Shawnee, Sheridan, Smith, Summer, Thomas, Wabaunsee, Washington, Wilson, Woodson, Wyandotte	
KS	FirstGuard Health Plan Kansas, Inc.	Medicaid MCO	Risk-based Capitation	1932(a)		79,234
KS	HealthConnect Kansas	PCCM	Fee-For-Service	1932(a)	Statewide	82,181
KS	Via Christi Healthcare Outreach Programs for Elders	PACE	Risk-based Capitation	PACE	Sedgwick	185
KY	Human Service Transportation	Transp PAHP	Risk-based Capitation	1915(b)	Statewide	652,935
KY	Kentucky Patient Access and Care (KenPAC)	PCCM	Fee-For-Service	1932(a)	Statewide	304,444
KY	Passport Health Plan	Medicaid MCO	Risk-based Capitation	1115	Jefferson County (Louisville) Kentucky and 15 surrounding counties	141,691
LA	Community Care Program	PCCM	Fee-For-Service	1932(a)	Statewide	689,609
MA	Boston Medical Center HealthNet Plan	Medicaid MCO	Risk-based Capitation	1115	Boston/Greater Boston Region, Central Region, Southern Region, Western Region	157,982
MA	Elder Service Plan at Fallon Community Health Plan	PACE	Risk-based Capitation	PACE	Worcester	201
MA	Elder Service Plan of Cambridge Health Alliance	PACE	Risk-based Capitation	PACE	Allston, Cambridge, Somerville	129
MA	Elder Service Plan of East Boston	PACE	Risk-based Capitation	PACE	East Boston	312
MA	Elder Service Plan of Harbor Health Services, Inc.	PACE	Risk-based Capitation	PACE	Greater Boston	209
MA	Elder Service Plan of the North Shore, Inc.	PACE	Risk-based Capitation	PACE	Northeastern MA	402
MA	Fallon Community Health Plan	Commercial MCO	Risk-based Capitation	1115	Central Region	10,427
MA	MA Behavioral Health Partnership	MH/SUD PIHP	Risk-based Capitation	1115	Statewide	289,406
MA	Neighborhood Health Plan	Commercial MCO	Risk-based Capitation	1115	Boston/Greater Region, Central/Western Region, Northeast/Southeast Region	110,522
MA	Network Health	Medicaid MCO	Risk-based Capitation	1115	Boston/Greater Boston Region, Central/Western Region, Northeast/Southeast Region	80,206
MA	Primary Care Clinician Plan	PCCM	Fee-For-Service	1115	Statewide	268,104
MA	Uphams Elder Service Plan	PACE	Risk-based Capitation	PACE	Boston	135
MD	AMERIGROUP Maryland Inc.	Medicaid MCO	Risk-based Capitation	1115	Anne Arundel, Baltimore City, Baltimore County, Calvert, Caroline, Carroll, Cecil, Charles, Dorchester, Frederick, Harford, Howard, Kent, Montgomery, Prince George's, Queen Anne's, Somerset, St. Mary's, Talbot, Wicomico	143,955
MD	Coventry Diamond Plan	Medicaid MCO	Risk-based Capitation	1115	Baltimore City, Baltimore County, Cecil, Harford	5,792

MD	Helix Family Choice	Medicaid MCO	Risk-based Capitation	1115	Anne Arundel North, Baltimore City, Baltimore County, Harford	22,825
MD	Hopkins Elder Plus	PACE	Risk-based Capitation	PACE	21052, 21202, 21205, 21206, 21213, 21214, 21218, 21219, 21220, 21221, 21222, 21224, 21227, 21231, 21237	150
MD	JAI Medical System	Medicaid MCO	Risk-based Capitation	1115	Baltimore City, Baltimore County	7,725
MD	Maryland Physicians Care	Medicaid MCO	Risk-based Capitation	1115	Statewide except for Prince George's county	85,514
MD	Priority Partners MCO	Medicaid MCO	Risk-based Capitation	1115	Statewide	117,271
MD	United Health Care	Medicaid MCO	Risk-based Capitation	1115	Statewide	106,756
ME	MaineCare Primary Care Case Management	PCCM	Fee-For-Service	1932(a)	Statewide	162,397
MI	Bay Arenac CMH	Mental Health PIHP	Risk-based Capitation	1915(b)/(c)	Arenac, Bay, Huron, Montcalm, Shiawassee, Tuscola	48,911
MI	Cape Health Plan	Medicaid MCO	Risk-based Capitation	1915(b)	Macomb, Monroe, Oakland, St.Clair, Wayne	85,170
MI	CEI CMH	Mental Health PIHP	Risk-based Capitation	1915(b)/(c)	Benzie, Clinton, Eaton, Gratiot, Ingham, Ionia, Manistee, Newago	74,044
MI	Central Michigan CMH	Mental Health PIHP	Risk-based Capitation	1915(b)/(c)	Clare, Gladwin, Isabella, Mecosta, Midland, Osceola	35,762
MI	Community Choice Michigan	Medicaid MCO	Risk-based Capitation	1915(b)	Alcona, Allegan, Alpena, Antrim, Arenac, Benzie, Berrien, Calhoun, Cass, Charlevoix, Crawford, Genesee, Gladwin, Grand Traverse, Iosco, Kalamazoo, Kalkaska, Kent, Lake, Leelanau, Manistee, Mason, Mecosta, Missaukee, Montmorency, Newaygo, Oceana, Ogemaw, Osceola, Oscoda, Ottawa, Presque Isle, Roscommon, Saginaw, St. Joseph, Van Buren	48,548
MI	Detroit-Wayne CMH	Mental Health PIHP	Risk-based Capitation	1915(b)/(c)	Wayne	384,804
MI	Genesee County CMH	Mental Health PIHP	Risk-based Capitation	1915(b)/(c)	Genesee	76,819
MI	Great Lakes Health Plan	Commercial MCO	Risk-based Capitation	1915(b)	Berrien, Calhoun, Cass, Hillsdale, Huron, Jackson, Lenawee, Livingston, Macomb, Oakland, Saginaw, Sanilac, St. Clair, Tuscola, Van Buren, Wayne	114,153
MI	Health Plan of Michigan	Medicaid MCO	Risk-based Capitation	1915(b)	Allegan, Barry, Berrien, Branch, Calhoun, Cass, Clinton, Eaton, Genesee, Hillsdale, Huron, Jackson, Kalamazoo, Kent, Lenawee, Livingston, Macomb, Manistee, Monroe, Montcalm, Muskegon, Newago, Oakland, Oceana, Ogemaw, Oscoda, Ottawa, Roscommon, Sanilac, St. Clair, St. Joseph, Tuscola, Van Buren	108,146
MI	HealthPlus Partners, Inc.	Medicaid MCO	Risk-based Capitation	1915(b)	Bay, Genesee, Lapeer, Saginaw, Shiawassee, Tuscola	62,279
MI	Henry Ford Health System-Center for Senior Independence	PACE	Risk-based Capitation	PACE	Detroit, Wayne County	225
MI	Kalamazoo County CMH	Mental Health PIHP	Risk-based Capitation	1915(b)/(c)	Allegan, Cass, Kalamazoo, St. Joseph	57,243
MI	Kent County CMH	Mental Health PIHP	Risk-based Capitation	1915(b)/(c)	Kent	75,216

MI	Lifeways CMH	Mental Health PIHP	Risk-based Capitation	1915(b)/(c)	Hillsdale, Jackson	27,853
MI	Macomb County CMH	Mental Health PIHP	Risk-based Capitation	1915(b)/(c)	Macomb	68,555
MI	M-Caid HMO	Medicaid MCO	Risk-based Capitation	1915(b)	Livingston, Washtenaw, Wayne	17,909
MI	McLaren Health Plan	Medicaid MCO	Risk-based Capitation	1915(b)	Arenac, Bay, Clinton, Crawford, Eaton, Genesee, Gratiot, Ingham, Ionia, Isabella, Lapeer, Ogemaw, Oscoda, Roscommon, Saginaw, Shiawassee, Tuscola	56,415
MI	Midwest Health Plan	Medicaid MCO	Risk-based Capitation	1915(b)	Livingston, Macomb, St. Clair, Washtenaw, Wayne	58,033
MI	Molina Healthcare of Michigan	Medicaid MCO	Risk-based Capitation	1915(b)	Alcona, Allegan, Arenac, Bay, Benzie, Crawford, Genesee, Gladwin, Gratiot, Huron, Ionia, Iosco, Kent, Lake, Macomb, Manistee, Mason, Mecosta, Midland, Missaukee, Montcalm, Montmorency, Muskegon, Newaygo, Oakland, Oceana, Ogemaw, Osceola, Oscoda, Otsego, Ottawa, Presque Isle, Roscommon, Saginaw, Sanilac, Tuscola, Wayne, Wexford	143,231
MI	Muskegon County CMH	Mental Health PIHP	Risk-based Capitation	1915(b)/(c)	Muskegon, Ottawa	49,770
MI	North Country CMH	Mental Health PIHP	Risk-based Capitation	1915(b)/(c)	Alcona, Alpena, Antrim, Charlevoix, Cheboygan, Emmet, Iosco, Kalkaska, Montmorency, Ogemaw, Oscoda, Otsego, Presque Isle	39,633
MI	Northern Lakes CMH	Mental Health PIHP	Risk-based Capitation	1915(b)/(c)	Crawford, Grand Traverse, Lake, Leelanau, Mason, Missaukee, Oceana, Roscommon, Wexford	35,939
MI	Oakland County CMH	Mental Health PIHP	Risk-based Capitation	1915(b)/(c)	Oakland	78,961
MI	Omnicare Health Plan	Commercial MCO	Risk-based Capitation	1915(b)	Wayne	58,412
MI	Pathways CMH	Mental Health PIHP	Risk-based Capitation	1915(b)/(c)	Alger, Baraga, Chippewa, Delta, Dickinson, Gogebic, Houghton, Iron, Keeweenaw, Luce, Mackinac, Marquette, Menominee, Ontonagan, Schoolcraft	39,700
MI	Physicians Health Plan of Mid-Michigan - Family Care	Medicaid MCO	Risk-based Capitation	1915(b)	Ingham	16,745
MI	Physicians Health Plan of Southwest Michigan	Commercial MCO	Risk-based Capitation	1915(b)	Berrien, Branch, Calhoun, Cass, Kalamazoo, St. Joseph, Van Buren	32,808
MI	Priority Health Government Programs, Inc.	Medicaid MCO	Risk-based Capitation	1915(b)	Allegan, Kent, Lake, Manistee, Mecosta, Montcalm, Muskegon, Oceana, Osceola, Ottawa	48,096
MI	Saginaw County CMH	Mental Health PIHP	Risk-based Capitation	1915(b)/(c)	Saginaw	36,371
MI	St. Clair County CMH	Mental Health PIHP	Risk-based Capitation	1915(b)/(c)	Lapeer, Sanilac, St. Clair	34,611
MI	Summit Pointe	Mental Health PIHP	Risk-based Capitation	1915(b)/(c)	Barry, Berrien, Branch, Calhoun, VanBuren	72,729
MI	Total Health Care	Commercial MCO	Risk-based Capitation	1915(b)	Genesee, Macomb, Wayne	53,401
MI	Upper Penninsula Health Plan	Medicaid MCO	Risk-based Capitation	1915(b)	Alger, Baraga, Chippewa, Delta, Dickinson, Gogebic, Houghton, Iron, Keewenaw, Luce, Mackinac, Marquette, Menominee, Ontonagan, Schoolcraft	25,460

MI	Washtenaw County CMH	Mental Health PIHP	Risk-based Capitation	1915(b)/(c)	Lenawee, Livingston, Monroe, Washtenaw	55,603
MN	Blue Plus	Commercial MCO	Risk-based Capitation	1115, 1915(b), 1932(a), 1915(a), 1915(b)/(c)	Aitkin, Anoka, Becker, Beltrami, Benton, Big Stone, Blue Earth, Brown, Carver, Cass, Chippewa, Chisago, Clay, Clearwater, Cottonwood, Crow Wing, Dakota, Dodge, Douglas, Faribault, Fillmore, Freeborn, Goodhue, Grant, Houston, Hubbard, Isanti, Itasca, Jackson, Kanabec, Kandiyohi, Kittson, Lac Qui Parle, Lake of the Woods, LeSeur, Lincoln, Lyon, Manhomen, Marshall, Martin, Mcleod, Meeker, Mille Lacs, Morrison, Mower, Murray, Nicollet, Nobles, Norman, Olmsted, Otter Tail, Pennington, Pine, Pipestone, Polk, Pope, Ramsey, Red Lake, Redwood, Renville, Rice, Rock, Rouseau, Scott, Sherburne, Sibley, Stearns, Steele, Stevens, Swift, Todd, Traverse, Wabasha, Wadena, Waseca, Washington, Watonwan, Wilkin, Winona, Wright, Yellow Medicine	91,844
MN	First Plan Blue	Commercial MCO	Risk-based Capitation	1115, 1915(b), 1932(a), 1915(a), 1915(b)/(c)	Carlton, Cook, Koochiching, Lake, St. Louis	6,839
MN	Health Partners	Commercial MCO	Risk-based Capitation	1115, 1915(b), 1932(a), 1915(a), 1915(b)/(c)	Anoka, Benton, Carver, Chisago, Dakota, Hennepin, Meeker, Mille Lacs, Morrison, Ramsey, Scott, Sherburne, Stearns, Washington, Wright	42,042
MN	Itasca Medical Care	Medicaid MCO	Risk-based Capitation	1115, 1915(b), 1932(a), 1915(a), 1915(b)/(c)	Aitkin, Cass, Itasca, Koochiching	4,326
MN	Medica	Commercial MCO	Risk-based Capitation	1115, 1915(b), 1932(a), 1915(a), 1915(b)/(c)	Aitkin, Anoka, Becker, Benton, Carlton, Carver, Cass, Chisago, Clay, Crow Wing, Dakota, Hennepin, Isanti, Koochiching, Lake, Mahnomen, Mille Lacs, Morrison, Norman, Otter Tail, Pine, polk, Ramsey, Rice, Scott, Sherburne, St. Louis, Stearns, Todd, Wadena, Washington, Wilkin, Wright	113,789
MN	Metropolitan Health Plan	Commercial MCO	Risk-based Capitation	1115, 1915(b), 1932(a), 1915(a), 1915(b)/(c)	Anoka, Carver, Hennepin, Mower, Polk, Scott	14,170
MN	PrimeWest Health System	Medicaid MCO	Risk-based Capitation	1115, 1915(b), 1932(a), 1915(a), 1915(b)/(c)	Big Stone, Douglas, Grant, McLeod, Meeker, Pipestone, Pope, Renville, Stevens, Traverse	9,477

MN	South Country Health Alliance	Medicaid MCO	Risk-based Capitation	1115, 1915(b), 1932(a), 1915(a), 1915(b)/(c)	Brown, Dodge, Freeborn, Goodhue, Kanabec, Sibley, Steele, Wabasha, Waseca	13,098
MN	UCARE	Commercial MCO	Risk-based Capitation	1115, 1915(b), 1932(a), 1915(a), 1915(b)/(c)	Aitkin, Anoka, Benton, Blue Earth, Carlton, Carver, Cass, Chippewa, Chisago, Cook, Cottonwood, Crow Wing, Dakota, Dodge, Faribault, Fillmore, Hennepin, Houston, Isanti, Jackson, Kandiyohi, Kittson, Lac Qui Parle, Lake, LeSueur, Lincoln, Lyon, Marshall, Martin, Millie Lacs, Morrison, Mower, Murray, Nicollet, Nobles, Norman, Olmsted, Otter Tail, Pennington, Pine, Polk, Ramsey, Red Lake, Redwood, Rice, Rock, Roseau, Sherburne, St. Louis, Stearns, Swift, Todd, Wabasha, Wadena, Washington, Watonwan, Winona, Wright, Yellow Medicine	75,844
MO	Alexian Brothers Community Services	PACE	Risk-based Capitation	PACE	St. Louis City, St. Louis County	162
MO	Blue Cross Blue Shield of Kansas City, Blue Advantage+ Plus	Commercial MCO	Risk-based Capitation	1115, 1915(b)	Cass, Clay, Henry, Jackson, Johnson, Lafayette, Platte, Ray, St. Clair	27,580
MO	Community Care Plus	Medicaid MCO	Risk-based Capitation	1115, 1915(b)	Franklin, Jefferson, Lincoln, St. Charles, St. Francois, St. Genevieve, St. Louis, St. Louis City, Warren, Washington	35,610
MO	Family Health Partners	Medicaid MCO	Risk-based Capitation	1115, 1915(b)	Cass, Clay, Henry, Jackson, Johnson, Lafayette, Platte, Ray, St. Clair	42,037
MO	FirstGuard	Commercial MCO	Risk-based Capitation	1115, 1915(b)	Cass, Clay, Henry, Jackson, Johnson, Lafayette, Platte, Ray, St. Clair	32,673
MO	HealthCare USA	Medicaid MCO	Risk-based Capitation	1115, 1915(b)	Audrain, Boone, Callaway, Camden, Cass, Chariton, Clay, Cole, Cooper, Franklin, Gasconade, Henry, Howard, Jackson, Jefferson, Johnson, Lafayette, Lincoln, Miller, Moniteau, Monroe, Montgomery, Morgan, Osage, Pettis, Platte, Randolph, Ray, Saline, St. Charles, St. Clair, St. Francois, St. Genevieve, St. Louis, St. Louis City, Warren, Washington	146,992
MO	Mercy Health Plans	Commercial MCO	Risk-based Capitation	1115, 1915(b)	Franklin, Jefferson, Lincoln, St. Charles, St. Francois, St. Genevieve, St. Louis, St. Louis City, Warren, Washington	39,697
MO	Missouri Care	Medicaid MCO	Risk-based Capitation	1115, 1915(b)	Audrain, Boone, Callaway, Camden, Chariton, Cole, Cooper, Gasconade, Howard, Miller, Moniteau, Monroe, Montgomery, Morgan, Osage, Pettis, Randolph, Saline	28,626
MO	Non-Emergency Medical Transportation (NEMT)	Transp PAHP	Risk-based Capitation	1915(b)	Statewide	473,017
MS	McKesson	Disease Management PAHP	Risk-based Capitation	1915(a) - 1902(a)(4)	Statewide	58,189
MT	Passport to Health	PCCM	Fee-For-Service	1915(b)	Statewide	55,382
NC	Carolina Access	PCCM	Fee-For-Service	1932(a)	Statewide	102,057
NC	Community Care of North Carolina (Access II/III)	PCCM	Fee-For-Service	1932(a)	Alamance, Beaufort, Buncombe, Burke, Carbarrus, Catawba, Chatham, Cleveland, Craven, Davidson, Durham, Edgecombe, Gaston, Guilford, Haywood, Henderson, Lenoir, Mecklenburg, Moore, Onslow, Orange, Pitt, Robeson, Sampson, Scotland, Surry, Wayne, Wilson	716,628
NC	Piedmont Cardinal Health Plan	MH/SUD PIHP	Risk-based Capitation	1915(b)/(c)	Rowan, Stanly, Davidson, Union and Cabarrus Counties	57,042
NC	Piedmont Cardinal Health Plan (Innovations)	MH/SUD PIHP	Risk-based Capitation	1915(b)/(c)	Rowan, Stanly, Davidson, Union and Cabarrus Counties	6,305

NC	Wellpath Select, Inc. dba Southcare	Commercial MCO	Risk-based Capitation	1932(a)	Mecklenburg	7,374
ND	AltruCare	Medicaid MCO	Risk-based Capitation	1932(a)	Grand Forks County, Pembina County, Walsh County	785
ND	Primary Care Case Management	PCCM	Fee-For-Service	1932(a)	Statewide	29,284
NE	Magellan Behavioral Health	*Specialty Physician Case Management (SPCM) Program	Fee-For-Service	1915(b)	Statewide	169,982
NE	Primary Care Plus	PCCM	Fee-For-Service	1915(b), 1932(a)	Douglas, Lancaster, Sarpy	38,308
NE	Share Advantage	Commercial MCO	Risk-based Capitation	1915(b), 1932(a)	Douglas, Lancaster, Sarpy	31,221
NH	McKesson Health Solutions	Disease Management PAHP	Non-risk Capitation	1915(b)	Statewide	83,529
NJ	AmeriChoice of New Jersey, Inc.	Commercial MCO	Risk-based Capitation	1915(b), 1932(a)	Statewide	162,256
NJ	AMERIGROUP New Jersey, Inc.	Medicaid MCO	Risk-based Capitation	1915(b), 1932(a)	Atlantic, Bergen, Burlington, Camden, Cape May, Cumberland, Essex, Gloucester, Hudson, Hunterdon, Mercer, Middlesex, Monmouth, Morris, Ocean, Passaic, Somerset, Sussex, Union, Warren	87,152
NJ	Health Net of New Jersey, Inc.	Medicaid MCO	Risk-based Capitation	1915(b), 1932(a)	Burlington, Camden, Cumberland, Essex, Gloucester, Hudson, Mercer, Middlesex, Ocean, Passaic, Salem, Somerset, Union	39,624
NJ	Horizon NJ Health	Medicaid MCO	Risk-based Capitation	1915(b), 1932(a)	Statewide	255,015
NJ	University Health Plans, Inc.	Commercial MCO	Risk-based Capitation	1915(b), 1932(a)	Atlantic, Bergen, Burlington, Camden, Cumberland, Essex, Gloucester, Hudson, Hunterdon, Mercer, Middlesex, Monmouth, Morris, Ocean, Passaic, Salem, Somerset, Sussex, Union, Warren	51,579
NM	Lovelace Community Health Plan	Commercial MCO	Risk-based Capitation	1915(b)	Statewide	64,328
NM	Molina Healthcare of New Mexico	Medicaid MCO	Risk-based Capitation	1915(b)	Statewide	58,025
NM	Presbyterian Salud!	Commercial MCO	Risk-based Capitation	1915(b)	Statewide	121,816
NM	Total Community Care (PACE)	PACE	Risk-based Capitation	PACE	Bernalillo County, Sandoval County, Valencia County	271
NM	ValueOptions of New Mexico	Mental Health PIHP	Risk-based Capitation	1915(b)	Statewide	261,318
NV	Health Plan of Nevada	Commercial MCO	Risk-based Capitation	1932(a)	Clark, Washoe	43,434
NV	Logisticare	Transp PAHP	Risk-based Capitation	1932(a)	Statewide	141,936
NV	NevadaCare DBA Nevada Health Solutions	Commercial MCO	Risk-based Capitation	1932(a)	Clark, Washoe	36,547
NY	Affinity Health Plan	Medicaid MCO	Risk-based Capitation	1115	Bronx, Kings, Nassau, New York, Orange, Queens, Richmond, Rockland, Suffolk, Westchester	185,201
NY	AmeriChoice of New York	Commercial MCO	Risk-based Capitation	1115	Bronx, Kings, Queens, Richmond	112,457
NY	AmeriChoice of New York/Medicaid Advantage	Commercial MCO	Risk-based Capitation	1115	Statewide	128

NY	Broome County MC	PCCM	Fee-For-Service	1115	Broome	5,850
NY	Capital District Physicians Health Plan	Commercial MCO	Risk-based Capitation	1115	Albany, Broome, Columbia, Fulton, Greene, Montgomery, Rensselaer, Saratoga, Schenectady, Schoharie, Tioga, Washington	43,793
NY	CarePlus Connections	Long Term Care PIHP	Risk-based Capitation	1915(a)	New York City	75
NY	CarePlus Health Plan	Medicaid MCO	Risk-based Capitation	1115	Kings, New York, Putnam, Queens, Richmond	112,455
NY	Community Choice Health Plan	Medicaid MCO	Risk-based Capitation	1115	Bronx, Rockland, Westchester	13,612
NY	Community Premier Plus	Medicaid MCO	Risk-based Capitation	1115	Bronx, New York	75,356
NY	Comprehensive Care Management (CCCM)	PACE	Risk-based Capitation	PACE	New York City, Westchester	1,885
NY	Eddy Senior Care	PACE	Risk-based Capitation	PACE	Albany, Schenectady	74
NY	Excellus	Commercial MCO	Risk-based Capitation	1115	Broome, Chemung, Clinton, Essex, Franklin, Herkimer, Livingston, Madison, Monroe, Oneida, Onondaga, Ontario, Orleans, Oswego, Otsego, Seneca, St Lawrence, Wayne, Yates	78,515
NY	GHI	*PPO	Risk-based Capitation	1115	Statewide	9,451
NY	GHI HMO Select	Commercial MCO	Risk-based Capitation	1115	Albany, Bronx, Broome, Columbia, Delaware, Dutchess, Greene, Kings, Manhattan, Montgomery, Orange, Otsego, Putnam, Rensselaer, Richmond, Rockland, Saratoga, Schenectady, Sullivan, Ulster, Warren, Washington, Westchester	20,385
NY	GHI/Medicaid Advantage	Commercial MCO	Risk-based Capitation	1115	Statewide	509
NY	Guildnet	Long Term Care PIHP	Risk-based Capitation	1915(a)	New York City	4,163
NY	Health Advantage/Elant Choice	Long Term Care PIHP	Risk-based Capitation	1915(a)	Orange	104
NY	Health First	Medicaid MCO	Risk-based Capitation	1115	Bronx, Kings, Nassau, New York, Queens, Richmond, Suffolk	312,663
NY	Health Now	Commercial MCO	Risk-based Capitation	1115	Albany, Allegany, Cattaraugus, Chautauqua, Clinton, Columbia, Erie, Essex, Fulton, Genesee, Greene, Montgomery, Niagara, Orleans, Rensselaer, Saratoga, Schenectady, Warren, Washington, Wyoming	40,852
NY	HealthPlus	Medicaid MCO	Risk-based Capitation	1115	Bronx, Kings, New York, Queens, Richmond	237,402
NY	Hebrew Hospital Home/CO-OP Care Plan	Long Term Care PIHP	Risk-based Capitation	1915(a)	New York City	453
NY	HIP Combined	Commercial MCO	Risk-based Capitation	1115	Bronx, Kings, Nassau, New York, Queens, Richmond, Suffolk, Westchester	250,915
NY	HIP Health Plan/Medicaid Advantage	Commercial MCO	Risk-based Capitation	1115	Statewide	2,445
NY	HomeFirst	Long Term Care PIHP	Risk-based Capitation	1915(a)	New York City	1,471
NY	Hudson Health Plan	Medicaid MCO	Risk-based Capitation	1115	Dutchess, Orange, Rockland, Sullivan, Ulster, Westchester	41,121

NY	Independent Care Systems	Long Term Care PIHP	Risk-based Capitation	1915(a)	New York City	808
NY	Independent Health/Hudson Valley&WNY	Commercial MCO	Risk-based Capitation	1115	Erie, Niagara	25,678
NY	Independent Living For Seniors	PACE	Risk-based Capitation	PACE	Monroe	294
NY	Liberty Health Advantage/Medicaid Advantage	Commercial MCO	Risk-based Capitation	1115	Statewide	172
NY	Long Island Health Partners/Broadlawn Health Partners	Long Term Care PIHP	Risk-based Capitation	1915(a)	Nassau	585
NY	Managed Health Inc/A+ Health Plan	Commercial MCO	Risk-based Capitation	1115	Bronx, Kings, New York, Queens, Richman	2,639
NY	Managed Health Inc/Medicaid Advantage	Commercial MCO	Risk-based Capitation	1115	Statewide	8
NY	Manhattan PHSP/Centercare	Medicaid MCO	Risk-based Capitation	1115	Bronx, Kings, New York, Queens, Richmond	70,740
NY	MetroPlus Health Plan	Medicaid MCO	Risk-based Capitation	1115	Bronx, Kings, New York, Queens	224,600
NY	MetroPlus Health Plan Special Needs	Medicaid MCO	Risk-based Capitation	1115	Bronx, Brooklyn, Manhattan, Queens	885
NY	Mohawk Valley Network/Senior Network Health	Long Term Care PIHP	Risk-based Capitation	1915(a)	Herkimer, Oneida	376
NY	MVP Health Plan	Commercial MCO	Risk-based Capitation	1115	Dutchess, Ulster	4,867
NY	Neighborhood Health Provider/Medicaid Advantage	Commercial MCO	Risk-based Capitation	1115	Statewide	540
NY	Neighborhood Health Providers	Medicaid MCO	Risk-based Capitation	1115	Bronx, Kings, New York, Queens, Richmond	94,115
NY	NY Presbyterian Hospital Health Plan	Medicaid MCO	Risk-based Capitation	1115	Bronx, Kings, New York, Queens	59,932
NY	NY State Catholic Health Plan/Fidelis	Medicaid MCO	Risk-based Capitation	1115	Albany, Bronx, Broome, Cattaraugus, Chautauqua, Clinton, Columbia, Cortland, Dutchess, Erie, Essex, Greene, Hamilton, Herkimer, Kings, Nassau, New York, Niagara, Oneida, Onondaga, Orleans, Oswego, Queens, Rensselaer, Richmond, Rockland, Saratoga, Schenectady, Suffolk, Warren, Washington, Westchester	232,373
NY	NYPS Select Health Special Needs	Medicaid MCO	Risk-based Capitation	1115	Bronx, Brooklyn, Manhattan, Queens, Staten Island	695
NY	NYS Catholic Health Plan/Fidelis/Medicaid Advantage	Commercial MCO	Risk-based Capitation	1115	Statewide	1
NY	OMH/Partial Capitation	Mental Health PAHP	Risk-based Capitation	1915(a)	Albany, Allegany, Bronx, Broome, Cattaraugus, Chautaugua, Chemung, Chenango, Columbia, Cortland, Dutchess, Erie, Franklin, Fulton, Herkimer, Jefferson, Kings, Lewis, Madison, Monroe, Nassau, New York, Niagara, Oneida, Onondaga, Ontario, Orange, Oswego, Otsego, Putnam, Queens, Rensselaer, Richmond, Rockland, Schenectady, Schoharie, Seneca, St. Lawrence, Steuben, Suffolk, Sullivan, Tompkins, Ulster, Wayne, Westchester, Yates	6,580
NY	PACE CNY	PACE	Risk-based Capitation	PACE	Onondaga	292

NY	Partners In Community Care	Long Term Care PIHP	Risk-based Capitation	1915(a)	Orange, Rockland	120
NY	Physician Case Management Program	PCCM	Risk-based Capitation	1115	Erie	5,077
NY	Preferred Care	Commercial MCO	Risk-based Capitation	1115	Genesee, Livingston, Monroe, Ontario	13,934
NY	SCHC TotalCare	Medicaid MCO	Risk-based Capitation	1115	Onondaga, Oswego, Tompkins	21,233
NY	Senior Health Partners	Long Term Care PIHP	Risk-based Capitation	1915(a)	New York City	547
NY	Southern Tier Pediatrics	PCCM	Risk-based Capitation	1115	Chemung, Steuben	2,507
NY	Southern Tier Priority	PCCM	Risk-based Capitation	1115	Chemung, Schuylers, Steuben	4,393
NY	St. Barnabas/Partners in Health	Medicaid MCO	Risk-based Capitation	1115	Bronx	25,159
NY	Suffolk Health Plan	Medicaid MCO	Risk-based Capitation	1115	Suffolk	11,904
NY	Total Aging in Place	Long Term Care PIHP	Risk-based Capitation	1915(a)	Erie	133
NY	United Healthcare of NY	Commercial MCO	Risk-based Capitation	1115	Bronx, Kings, Nassau, Queens, Richmond, Suffolk	73,191
NY	United Healthcare of Upstate	Commercial MCO	Risk-based Capitation	1115	Cayuga, Herkimer, Madison, Oneida, Onondaga, Oswego	22,105
NY	Univera Community Health	Medicaid MCO	Risk-based Capitation	1115	Allegany, Cattaraugus, Chautauqua, Erie	25,500
NY	VidaCare Inc. Special Needs	Medicaid MCO	Risk-based Capitation	1115	Bronx, Brooklyn, Manhattan, Queens, Staten Island	327
NY	VNS Choice	Long Term Care PIHP	Risk-based Capitation	1915(a)	New York City	4,396
NY	Wellcare	Commercial MCO	Risk-based Capitation	1115	Albany, Bronx, Columbia, Dutchess, Greene, Kings, New York, Orange, Queens, Rensselaer, Rockland, Sullivan, Ulster	84,201
OH	Amerigroup Ohio	Medicaid MCO	Risk-based Capitation	1932(a)	Butler, Hamilton	26,992
OH	Buckeye Community Health Plan	Medicaid MCO	Risk-based Capitation	1932(a)	Lucas, Stark, Summit	72,709
OH	CareSource	Medicaid MCO	Risk-based Capitation	1932(a)	Butler, Clark, Clermont, Cuyahoga, Franklin, Greene, Hamilton, Lorain, Mahoning, Montgomery, Pickaway, Stark, Summit, Trumbull, Warren	434,216
OH	Concordia Care	PACE	Risk-based Capitation	PACE	Cuyahoga	236
OH	Gateway Health Plan of Ohio	Medicaid MCO	Risk-based Capitation	1932(a)	Mahoning, Trumbull	14,688
OH	Molina Healthcare of Ohio	Medicaid MCO	Risk-based Capitation	1932(a)	Clark, Franklin, Montgomery	29,266
OH	Paramount Advantage	Medicaid MCO	Risk-based Capitation	1932(a)	Lucas, Wood	40,861
OH	Qualchoice Select	Medicaid MCO	Risk-based Capitation	1932(a)	Cuyahoga, Lorain	67,722

OH	TriHealth Senior Link	PACE	Risk-based Capitation	PACE	Butler, Clermont, Hamilton, Warren	338
OH	Unison Health Plan of Ohio	Medicaid MCO	Risk-based Capitation	1932(a)	Mahoning, Trumbull	11,021
OK	LogistiCare	Transp PAHP	Risk-based Capitation	1932(a)	Statewide	477,677
OK	SoonerCare American Indian PCCM	PCCM	Non-risk Capitation	1115	Statewide	6,347
OK	SoonerCare PAHP	Medical-only PAHP	Risk-based Capitation	1115	Statewide	366,169
OR	Accountable Behavioral Health	Mental Health PIHP	Risk-based Capitation	1115	Benton, Crook, Deschutes, Jefferson, Lincoln	23,473
OR	Capitol Dental Care Inc.	Dental PAHP	Risk-based Capitation	1115	Benton, Clackamas, Clatsop, Columbia, Hood River, Jackson, Josephine, Klamath, Lane, Lincoln, Linn, Marion, Morrow, Multnomah, Polk, Umatilla, Union, Wasco, Washington, Yamhill	117,662
OR	Care Oregon	Medicaid MCO	Risk-based Capitation	1115	Clackamas, Clatsop, Columbia, Coos, Douglas, Jackson, Klamath, Marion, Morrow, Multnomah, Polk, Umatilla, Washington, Yamhill	101,881
OR	Cascade Comprehensive Care	Medicaid MCO	Risk-based Capitation	1115	Klamath	6,287
OR	Central Oregon Independent Health Solutions	Medicaid MCO	Risk-based Capitation	1115	Crook, Deschutes, Grant, Harney, Hood River, Jefferson, Klamath, Lake, Sherman, Wasco, Wheeler	19,510
OR	Clackamas County Mental Health	Mental Health PIHP	Risk-based Capitation	1115	Clackamas, Gilliam, Hood River, Marion, Sherman, Wasco	22,593
OR	Deschutes County CDO	Substance Use Disorders PAHP	Risk-based Capitation	1115	Deschutes	7,496
OR	Doctors of the Oregon Coast South	Medicaid MCO	Risk-based Capitation	1115	Coos	7,329
OR	Douglas County IPA	Commercial MCO	Risk-based Capitation	1115	Douglas	10,941
OR	FamilyCare (Mental Health)	Mental Health PIHP	Risk-based Capitation	1115	Clackamas, Multnomah, Washington	9,309
OR	FamilyCare Health Plans	Commercial MCO	Risk-based Capitation	1115	Clackamas, Jackson, Josephine, Morrow, Multnomah, Umatilla, Washington	16,195
OR	Greater Oregon Behavioral Health, Inc.	Mental Health PIHP	Risk-based Capitation	1115	Baker, Clatsop, Columbia, Grant, Harney, Lake, Malheur, Morrow, Umatilla, Union, Wallowa, Wheeler	28,145
OR	Hayden Family Dentistry	Dental PAHP	Risk-based Capitation	1115	Benton, Clackamas, Coos, Crook, Deschutes, Douglas, Gilliam, Grant, Harney, Jackson, Jefferson, Klamath, Lake, Lane, Lincoln, Linn, Marion, Morrow, Multnomah, Polk, Sherman, Umatilla, Wasco, Wheeler	28,443
OR	Inter-Community Health Network	Medicaid MCO	Risk-based Capitation	1115	Benton, Linn	16,427
OR	Jefferson Behavioral Health	Mental Health PIHP	Risk-based Capitation	1115	Coos, Curry, Douglas, Jackson, Josephine, Klamath	58,253
OR	Lane Care MHO	Mental Health PIHP	Risk-based Capitation	1115	Lane	32,086
OR	Lane Individual Practice Association	Medicaid MCO	Risk-based Capitation	1115	Benton, Lane, Linn	28,472

OR	Managed Dental Care of Oregon	Dental PAHP	Risk-based Capitation	1115	Benton, Clackamas, Clatsop, Columbia, Hood River, Jackson, Josephine, Linn, Marion, Multnomah, Polk, Tillamook, Washington, Yamhill	12,056
OR	Marion Polk Community Health Plan	Medicaid MCO	Risk-based Capitation	1115	Benton, Clackamas, Linn, Marion, Polk, Yamhill	36,034
OR	Mid Valley Behavioral Care Network	Mental Health PIHP	Risk-based Capitation	1115	Linn, Marion, Polk, Tillamook, Yamhill	65,584
OR	Mid-Rogue Independent Practice Assoc.	Medicaid MCO	Risk-based Capitation	1115	Douglas, Jackson, Josephine	5,452
OR	Multicare Dental	Dental PAHP	Risk-based Capitation	1115	Clackamas, Multnomah, Washington	25,133
OR	Multnomah County Verity	Mental Health PIHP	Risk-based Capitation	1115	Multnomah	66,543
OR	Non-Emergency Transportation	*FFS Transportation Brokers	Fee-For-Service	1915(b)	Statewide	357,734
OR	Northwest Dental Services	Dental PAHP	Risk-based Capitation	1115	Baker, Coos, Crook, Curry, Deschutes, Douglas, Grant, Harney, Hood River, Jackson, Jefferson, Josephine, Klamath, Lake, Lane, Malheur, Sherman, Umatilla, Union, Wallowa, Wasco, Wheeler	69,951
OR	Oregon Dental Service	Dental PAHP	Risk-based Capitation	1115	Baker, Benton, Clackamas, Clatsop, Columbia, Crook, Deschutes, Grant, Hood River, Jackson, Jefferson, Josephine, Lane, Linn, Malheur, Marion, Multnomah, Polk, Tillamook, Umatilla, Wasco, Washington, Yamhill	42,892
OR	Oregon Health Management Service	Medicaid MCO	Risk-based Capitation	1115	Douglas, Jackson, Josephine	4,073
OR	PCCM	PCCM	Fee-For-Service	1115	Statewide	10,102
OR	Providence Elder Place	PACE	Risk-based Capitation	PACE	97009, 97010, 97014, 97019, 97024, 97030, 97034, 97035, 97056, 97060, 97080, 97124, 97133, 97201, 97202, 97203, 97204, 97205, 97206, 97209, 97210, 97211, 97212, 97213, 97215, 97216, 97217, 97218, 97219, 97220, 97221, 97222, 97225, 97227, 97229, 97230, 97231, 97232, 97233, 97236, 97239, 97258, 97266	623
OR	Providence Health Assurance	Medicaid MCO	Risk-based Capitation	1115	Clackamas, Multnomah, Washington, Yamhill	15,478
OR	Tuality Health Care	Medicaid MCO	Risk-based Capitation	1115	Washington	6,536
OR	Washington County Health (Mental Health)	Mental Health PIHP	Risk-based Capitation	1115	Washington	29,230
OR	Willamette Dental	Dental PAHP	Risk-based Capitation	1115	Benton, Clackamas, Deschutes, Douglas, Jackson, Josephine, Lane, Lincoln, Linn, Marion, Multnomah, Polk, Tillamook, Washington	59,304
PA	Access Plus Program	PCCM	Fee-For-Service	1915(b)	Bedford, Blair, Bradford, Cambria, Cameron, Carbon, Centre, Clarion, Clearfield, Clinton, Columbia, Crawford, Elk, Erie, Forest, Franklin, Fulton, Huntingdon, Jefferson, Juniata, Lackawanna, Luzerne, Lycoming, McKean, Mercer, Mifflin, Monroe, Montour, Northumberland, Pike, Potter, Schuylkill, Snyder, Somerset, Sullivan, Susquehanna, Tioga, Union, Venango, Warren, Wayne, Wyoming	296,066
PA	AmeriChoice of Pennsylvania	Commercial MCO	Risk-based Capitation	1915(b)	Bucks, Chester, Delaware, Montgomery, Philadelphia	86,524

PA	AmeriHealth HMO, Inc./AmeriHealth Mercy Health Plan	Commercial MCO	Risk-based Capitation	1915(b)	Adams, Berks, Cumberland, Dauphin, Lancaster, Lebanon, Lehigh, Northampton, Perry, York	82,345
PA	AmeriHealth HMO, Inc./AmeriHealth Mercy Health Plan - VOL	Commercial MCO	Risk-based Capitation	1915(a)	Carbon, Lackawanna, Luzerne, Monroe, Pike	1,383
PA	Community LIFE	PACE	Risk-based Capitation	PACE	14145, 15014, 15018, 15020, 15024, 15025, 15028, 15030, 15032, 15034, 15035, 15037, 15045, 15047, 15049, 15051, 15065, 15075, 15076, 15084, 15088, 15102, 15104, 15110, 15112, 15120, 15122, 15129, 15131, 15132, 15133, 15135, 15137, 15139, 15140, 15144, 15146, 15147, 15148, 15206, 15207, 15208, 15215, 15217, 15218, 15221, 15227, 15232, 15234, 15235, 15236, 15238, 15239	250
PA	County of Adams - Community Care Behavioral Health	MH/SUD PIHP	Risk-based Capitation	1915(b)	Adams	7,332
PA	County of Allegheny - Community Care Behavioral Health	MH/SUD PIHP	Risk-based Capitation	1915(b)	Allegheny	150,887
PA	County of Armstrong - Value Behavioral Health of PA	MH/SUD PIHP	Risk-based Capitation	1915(b)	Armstrong	10,197
PA	County of Beaver - Value Behavioral Health of PA	MH/SUD PIHP	Risk-based Capitation	1915(b)	Beaver	24,222
PA	County of Berks - Community Care Behavioral Health	MH/SUD PIHP	Risk-based Capitation	1915(b)	Berks	50,291
PA	County of Bucks - Magellan Behavioral Health	MH/SUD PIHP	Risk-based Capitation	1915(b)	Bucks	35,155
PA	County of Butler - Value Behavioral Health of PA	MH/SUD PIHP	Risk-based Capitation	1915(b)	Butler	15,494
PA	County of Chester - Community Care Behavioral Health	MH/SUD PIHP	Risk-based Capitation	1915(b)	Chester	24,114
PA	County of Cumberland - Community Behavioral Healthcare Network of PA, Inc.	MH/SUD PIHP	Risk-based Capitation	1915(b)	Cumberland	13,413
PA	County of Dauphin - Community Behavioral Healthcare Network of PA, Inc.	MH/SUD PIHP	Risk-based Capitation	1915(b)	Dauphin	33,860
PA	County of Delaware - Magellan Behavioral Health	MH/SUD PIHP	Risk-based Capitation	1915(b)	Delaware	61,730
PA	County of Fayette - Value Behavioral Health of PA	MH/SUD PIHP	Risk-based Capitation	1915(b)	Fayette	31,472
PA	County of Indiana - Value Behavioral Health of PA	MH/SUD PIHP	Risk-based Capitation	1915(b)	Indiana	10,364
PA	County of Lancaster - Community Behavioral Healthcare Network of PA, Inc.	MH/SUD PIHP	Risk-based Capitation	1915(b)	Lancaster	48,405
PA	County of Lawrence - Value Behavioral Health of PA	MH/SUD PIHP	Risk-based Capitation	1915(b)	Lawrence	14,959
PA	County of Lebanon - Community Behavioral Healthcare Network of PA, Inc.	MH/SUD PIHP	Risk-based Capitation	1915(b)	Lebanon	13,328
PA	County of Lehigh - Magellan Behavioral Health	MH/SUD PIHP	Risk-based Capitation	1915(b)	Lehigh	44,463
PA	County of Montgomery - Magellan Behavioral Health	MH/SUD PIHP	Risk-based Capitation	1915(b)	Montgomery	40,340
PA	County of Northampton - Magellan Behavioral Health	MH/SUD PIHP	Risk-based Capitation	1915(b)	Northampton	26,323

PA	County of Perry - Community Behavioral Healthcare Network of PA, Inc.	MH/SUD PIHP	Risk-based Capitation	1915(b)	Perry	4,287
PA	County of Philadelphia - Community Behavioral Health	MH/SUD PIHP	Risk-based Capitation	1915(b)	Philadelphia	417,626
PA	County of Washington - Value Behavioral Health of PA	MH/SUD PIHP	Risk-based Capitation	1915(b)	Washington	24,325
PA	County of Westmoreland - Value Behavioral Health of PA	MH/SUD PIHP	Risk-based Capitation	1915(b)	Westmoreland	39,369
PA	County of York - Community Care Behavioral Health	MH/SUD PIHP	Risk-based Capitation	1915(b)	York	40,619
PA	Disease Management PAHP	Disease Management PAHP	Risk-based Capitation	1915(b)	Bedford, Blair, Bradford, Cambria, Cameron, Carbon, Centre, Clarion, Clearfield, Clinton, Columbia, Crawford, Elk, Erie, Forest, Franklin, Fulton, Huntington, Jefferson, Juniata, Lackawanna, Luzerne, Lycoming, McKean, Mercer, Mifflin, Monroe, Montour, Northumberland, Pike, Potter, Schuylkill, Snyder, Somerset, Sullivan, Susquehanna, Tioga, Union, Venango, Warren, Wayne, Wyoming	33,127
PA	Gateway Health Plan, Inc.	Commercial MCO	Risk-based Capitation	1915(b)	Adams, Allegheny, Armstrong, Beaver, Berks, Butler, Cumberland, Dauphin, Fayette, Greene, Indiana, Lancaster, Lawrence, Lebanon, Lehigh, Northampton, Perry, Washington, Westmoreland, York	224,158
PA	Gateway Health Plan, Inc. -VOL	Commercial MCO	Risk-based Capitation	1915(a)	Blair, Cambria, Carbon, Clarion, Columbia, Erie, Franklin, Jefferson, Lackawanna, Luzerne, Mercer, Monroe, Montour, Northumberland, Pike, Schuylkill, Somerset, Susquehanna, Wyoming	25,031
PA	Health Partners of Philadelphia	Commercial MCO	Risk-based Capitation	1915(b)	Bucks, Chester, Delaware, Montgomery, Philadelphia	135,978
PA	Keystone Mercy Health Plan	Commercial MCO	Risk-based Capitation	1915(b)	Bucks, Chester, Delaware, Montgomery, Philadelphia	282,007
PA	LIFE - Beaver County	Medical-only PIHP	Risk-based Capitation	1915(a)	Beaver	49
PA	LIFE - Geisinger	Medical-only PIHP	Risk-based Capitation	1915(a)	Lackawanna, Luzerne, Montour, Northumberland, Schuylkill, Snyder, Union, Wyoming	41
PA	LIFE - Pittsburg	PACE	Risk-based Capitation	PACE	15006, 15007, 15015, 15017, 15031, 15044, 15046, 15056, 15064, 15071, 15082, 15086, 15090, 15091, 15101, 15106, 15108, 15116, 15126, 15127, 15136, 15142, 15143, 15201, 15202, 15203, 15204, 15205, 15209, 15210, 15211, 15212, 15213, 15214, 15216, 15219, 15220, 15222, 15223, 15224, 15225, 15226, 15228, 15229, 15233, 15237, 15241, 15243	240
PA	LIFE - St. Agnes	PACE	Risk-based Capitation	PACE	19106, 19107, 19111, 19114, 19115, 19116, 19123, 19124, 19125, 19134, 19135, 19136, 19137, 19145, 19146, 19147, 19148, 19149, 19152, 19154	159
PA	LIFE - University of Pennsylvania	PACE	Risk-based Capitation	PACE	19103, 19104, 19121, 19130, 19131, 19139, 19142, 19143, 19151, 19153	309
PA	Senior LIFE Johnstown	Medical-only PIHP	Risk-based Capitation	1915(a)	Blair, Cambria, Dauphin, Somerset County zip codes 15531, 15928, 15935, 15953 and 15963, Westmoreland County zip codes 15944 and 15954, York	29
PA	Unison Health Plan / MedPLUS	Commercial MCO	Risk-based Capitation	1915(b)	Adams, Allegheny, Armstrong, Beaver, Berks, Butler, Cumberland, Dauphin, Fayette, Greene, Indiana, Lancaster, Lawrence, Lebanon, Lehigh, Northampton, Perry, Washington, Westmoreland, York	134,927

PA	Unison Health Plan/MedPlus - VOL	Commercial MCO	Risk-based Capitation	1915(a)	Blair, Bradford, Cambria, Carbon, Clarion, Columbia, Crawford, Erie, Forest, Franklin, Jefferson, Lackawanna, Luzerne, Mercer, Monroe, Montour, Pike, Schuylkill, Somerset, Sullivan, Susquehanna, Warren, Wyoming	43,523
PA	UPMC Health Plan, Inc./UPMC for You	Commercial MCO	Risk-based Capitation	1915(b)	Allegheny, Armstrong, Beaver, Butler, Fayette, Greene, Indiana, Lawrence, Washington, Westmoreland	83,476
PA	UPMC Health Plan, Inc./UPMC for You - VOL	Commercial MCO	Risk-based Capitation	1915(a)	Bedford, Blair, Cambria, Clearfield, Crawford, Mercer, Somerset, Venango	9,961
PA	Value Behavioral Health of PA (Greene County)	MH/SUD PIHP	Risk-based Capitation	1915(b)	Greene	7,999
PR	Alianza de Medicos de Sur Este, Inc.	Commercial MCO	Risk-based Capitation	1915(a)	Arroyo, Barranquitas, Coamo, Guayama, Juana Diaz, Maunabo, Orocovis, Patillas, Salinas, Santa Isabel, Villalba	8,352
PR	American Health Medicare	Commercial MCO	Risk-based Capitation	1915(a)	Aguas Buenas, Aibonito, Arecibo, Barceloneta, Bayamón, Caguas, Canovanas, Carolina, Cataño, Cayey, Ceiba, Cidra, Coamo, Comerio, Dorado, Fajardo, Florida, Guayama, Guaynabo, Gurabo, Hatillo, Humacao, Juana Díaz, Juncos, Las Piedras, Lioza, Luquillo, Manati, Maunabo, Naguabo, Naranjito, Orocovis, Patillas, Penuelas, Ponce, Rio Grande, Salinas, San Juan, San Lorenzo, Santa Isabel, Toa Alta, Toa Baja, Trujillo Alto, Vega Alta, Vega Baja	1,664
PR	APS Healthcare	MH/SUD PIHP	Risk-based Capitation	1915(a)	Aguas Buenas, Arecibo, Barceloneta, Bayamon, Caguas, Camuy, Canovanas, Carolina, Catano, Cayey, Ceiba, Ciales, Cidra, Comerio, Corozal, Culebra, Dorado, Fajardo, Florida, Guaynabo, Gurabo, Hatillo, Humacao, Juncos, Lares, Las Piedras, Loiza, Luquillo, Manati, Morovia, Naguabo, Naranjito, Quebradillas, Rio Grande, San Juan, San Lorenzo, Toa Alto, Toa Baja, Trujillo Alto, Utuado, Vega Alta, Vega Baja, Vieques, Yabucoa	478,235
PR	Auxilio Platino	Commercial MCO	Risk-based Capitation	1915(a)	Bayamón, Caguas, Carolina, Guaynabo, San Juan, Trujillo Alto	61
PR	COSVIMed	Commercial MCO	Risk-based Capitation	1915(a)	Adjuntas, Aguada, Aguadilla, Aibonito, Añasco, Arecibo, Arroyo, Barceloneta, Barranquitas, Bayamón, Cabo Rojo, Camuy, Canovanas, Carolina, Cataño, Cayey, Ciales, Coamo, Comerio, Corozal, Culebra, Dorado, Fajardo, Florida, Guanica, Guayama, Guayanilla, Guaynabo, Hatillo, Hormigueros, Isabela, Jayuya, Juana Diaz, Lajas, Lares, Las Marias, Lioza, Luquillo, Manati, Maricao, Mayaguez, Moca, Morovis, Naguabo, Naranjito, Orocovis, Patillas, Penuelas, Ponce, Quebradillas, Rincon, Rio Grande, Sabana Grande, Salinas, San German, San Sebastian, Santa Isabel, Toa Alta, Toa Baja, Trujillo Alto, Utuado, Vega Alta, Vega Baja, Vieques, Villalba, Yauco	158
PR	FHC Healthcare	MH/SUD PIHP	Risk-based Capitation	1915(a)	Adjuntas, Aguada, Aguadilla, Aibonito, Anasco, Arroyo, Barranquitas, Cabo Rojo, Coamo, Guanica, Guayama, Guayanilla, Hormigueros, Isabela, Jayuya, Juana Diaz, Lajas, Las Marias, Maricao, Maunabo, Mayaguez, Moca, Orocovis, Patillas, Penuelas, Ponce, Rincon, Sabana Grande, Salinas, San German, San Sebastian, Santa Isabel, Villalba, Yauco	297,886

PR	First Medical Health Plans	Commercial MCO	Risk-based Capitation	1915(a)	Adjuntas, Aguada, Aguadilla, Aguas Buenas, Aibonito, Añasco, Arecibo, Arroyo, Barceloneta, Barranquitas, Bayamón, Cabo Rojo, Caguas, Camuy, Canovanas, Carolina, Cataño, Cayey, Ceiba, Ciales, Cidra, Coamo, Comerio, Corozal, Culebra, Dorado, Fajardo, Florida, Guanica, Guayama, Guayanilla, Guaynabo, Gurabo, Hatillo, Hormigueros, Humaco, Isabela, Jayuya, Juana Diaz, Juncos, Lajas, Lares, Las Marias, Las Piedras, Lioza, Luquillo, Manati, Maricao, Maunabo, Mayaquez, Moca, Ponce, Quebradillas, Rincon, Rio Grande, Sabana Grande, Salinas, San German, San Juan, San Lorenzo, San Sebastian, Santa Isabel, Toa Alta, Toa Baja, Trujillo Alto, Utuado, Vega Alta, Vega Baja, Viequez, Villalba, Yabucoa, Yauco	1,427
PR	Humana Health Plans of Puerto Rico, Inc.	Commercial MCO	Risk-based Capitation	1915(a)	Aguas Buenas, Aibonito, Arroyo, Barranquitas, Caguas, Cayey, Cidra, Coamo, Guayama, Gurabo, Humacao, Juana Diaz, Juncos, Las Piedras, Maunabo, Naguabo, Orocovis, Patillas, Salinas, San Lorenzo, Santa Isabel, Villalba, Yabucoa	197,217
PR	Humana Puerto Rico	Commercial MCO	Risk-based Capitation	1915(a)	Aguas Buenas, Arecibo, Bayamón, Caguas, Cayey, Ciales, Cidra, Coamo, Guayama, Gurabo, Juana Díaz, Juncos, Las Piedras, Maunabo, Mayagüez, Naguabo, Patillas, Ponce, San Juan, Villalba, Yabucoa	10,507
PR	MAPFRE Puerto Rico	Commercial MCO	Risk-based Capitation	1915(a)	Adjuntas, Aguada, Aguadilla, Aguas Buenas, Aibonito, Añasco, Arecibo, Arroyo, Barceloneta, Barranquitas, Bayamón, Cabo Rojo, Caguas, Camuy, Canovanas, Carolina, Cataño, Cayey, Ceiba, Ciales, Cidra, Coamo, Comerio, Corozal, Culebra, Dorado, Fajardo, Florida, Guanica, Guayama, Guayanilla, Guaynabo, Gurabo, Hatillo, Hormigueros, Humaco, Isabela, Jayuya, Juana Diaz, Juncos, Lajas, Lares, Las Marias, Las Piedras, Lioza, Luquillo, Manati, Maricao, Maunabo, Mayaquez, Moca, Ponce, Quebradillas, Rincon, Rio Grande, Sabana Grande, Salinas, San German, San Juan, San Lorenzo, San Sebastian, Santa Isabel, Toa Alta, Toa Baja, Trujillo Alto, Utuado, Vega Alta, Vega Baja, Viequez, Villalba, Yabucoa, Yauco	1,194
PR	MCS Health Management Options, Inc.	Commercial MCO	Risk-based Capitation	1915(a)	Aguada, Aguadilla, Anasco, Cabo Rojo, Canovanas, Carolina, Ceiba, Culebra, Fajardo, Hormigueros, Isabela, Lajas, Las Marias, Loiza, Luquillo, Maricao, Mayaguez, Moca, Rincon, Rio Grande, Sabana Grande, San German, San Juan, San Sebastian, Trujillo Alto, Vieques	256,598
PR	MCS Life	Commercial MCO	Risk-based Capitation	1915(a)	Adjuntas, Aguada, Aguadilla, Aguas Buenas, Aibonito, Añasco, Arecibo, Arroyo, Barceloneta, Barranquitas, Bayamón, Cabo Rojo, Caguas, Camuy, Canovanas, Carolina, Cataño, Cayey, Ceiba, Ciales, Cidra, Coamo, Comerio, Corozal, Culebra, Dorado, Fajardo, Florida, Guanica, Guayama, Guayanilla, Guaynabo, Gurabo, Hatillo, Hormigueros, Humaco, Isabela, Jayuya, Juana Diaz, Juncos, Lajas, Lares, Las Marias, Las Piedras, Lioza, Luquillo, Manati, Maricao, Maunabo, Mayaquez, Moca, Ponce, Quebradillas, Rincon, Rio Grande, Sabana Grande, Salinas, San German, San Juan, San Lorenzo, San Sebastian, Santa Isabel, Toa Alta, Toa Baja, Trujillo Alto, Utuado, Vega Alta, Vega Baja, Viequez, Villalba, Yabucoa, Yauco	24,632

PR	MMM Healthcare Inc.	Commercial MCO	Risk-based Capitation	1915(a)	Adjuntas, Aguada, Aguadilla, Aguas Buenas, Aibonito, Añasco, Arecibo, Arroyo, Barceloneta, Barranquitas, Bayamón, Cabo Rojo, Caguas, Camuy, Canovanas, Carolina, Cataño, Cayey, Ceiba, Ciales, Cidra, Coamo, Comerio, Corozal, Culebra, Dorado, Fajardo, Florida, Guanica, Guayama, Guayanilla, Guaynabo, Gurabo, Hatillo, Hormigueros, Humaco, Isabela, Jayuya, Juana Diaz, Juncos, Lajas, Lares, Las Marias, Las Piedras, Lioza, Luquillo, Manati, Maricao, Maunabo, Mayaguez, Moca, Ponce, Quebradillas, Rincon, Rio Grande, Sabana Grande, Salinas, San German, San Juan, San Lorenzo, San Sebastian, Santa Isabel, Toa Alta, Toa Baja, Trujillo Alto, Utuado, Vega Alta, Vega Baja, Viequez, Villalba, Yabucoa, Yauco	44,860
PR	PMC Medicare Choice	Commercial MCO	Risk-based Capitation	1915(a)	Adjuntas, Aguada, Aguadilla, Aguas Buenas, Aibonito, Añasco, Arecibo, Arroyo, Barceloneta, Barranquitas, Bayamón, Cabo Rojo, Caguas, Camuy, Canovanas, Carolina, Cataño, Cayey, Ceiba, Ciales, Cidra, Coamo, Comerio, Corozal, Culebra, Dorado, Fajardo, Florida, Guanica, Guayama, Guayanilla, Guaynabo, Gurabo, Hatillo, Hormigueros, Humaco, Isabela, Jayuya, Juana Diaz, Juncos, Lajas, Lares, Las Marias, Las Piedras, Lioza, Luquillo, Manati, Maricao, Maunabo, Mayaguez, Moca, Ponce, Quebradillas, Rincon, Rio Grande, Sabana Grande, Salinas, San German, San Juan, San Lorenzo, San Sebastian, Santa Isabel, Toa Alta, Toa Baja, Trujillo Alto, Utuado, Vega Alta, Vega Baja, Viequez, Villalba, Yabucoa, Yauco	36,548
PR	San Judas Medical Services	Commercial MCO	Risk-based Capitation	1915(a)	Canovanas, Carolina, Ceiba, Culebra, Fajardo, Loiza, Luquillo, Rio Grande, San Juan, Trujillo Alto, Vieques	5,712
PR	Triple S	Commercial MCO	Risk-based Capitation	1915(a)	Adjuntas, Aguada, Aguadilla, Aguas Buenas, Aibonito, Añasco, Arecibo, Arroyo, Barceloneta, Barranquitas, Bayamón, Cabo Rojo, Caguas, Camuy, Canovanas, Carolina, Cataño, Cayey, Ceiba, Ciales, Cidra, Coamo, Comerio, Corozal, Culebra, Dorado, Fajardo, Florida, Guanica, Guayama, Guayanilla, Guaynabo, Gurabo, Hatillo, Hormigueros, Humaco, Isabela, Jayuya, Juana Diaz, Juncos, Lajas, Lares, Las Marias, Las Piedras, Lioza, Luquillo, Manati, Maricao, Maunabo, Mayaguez, Moca, Ponce, Quebradillas, Rincon, Rio Grande, Sabana Grande, Salinas, San German, San Juan, San Lorenzo, San Sebastian, Santa Isabel, Toa Alta, Toa Baja, Trujillo Alto, Utuado, Vega Alta, Vega Baja, Viequez, Villalba, Yabucoa, Yauco	10,064
PR	Triple-S, Inc.	Commercial MCO	Risk-based Capitation	1915(a)	Adjuntas, Arecibo, Barceloneta, Bayamón, Camuy, Cataño, Ciales, Comerio, Corozal, Dorado, Florida, Guanica, Guayanilla, Guaynabo, Hatillo, Jayuya, Lares, Manati, Morovis, Naranjito, Penuelas, Ponce, Quebradillas, Toa Alta, Toa Baja, Utuado, Vega Alta, Vega Baja, Yauco	308,242
RI	Blue Cross & Blue Shield of Rhode Island	Commercial MCO	Risk-based Capitation	1115	Statewide	13,722
RI	Neighborhood Health Plan of Rhode Island	Medicaid MCO	Risk-based Capitation	1115	Statewide	71,378
RI	PACE Organization of Rhode Island	PACE	Risk-based Capitation	PACE	Statewide except for Zip Codes Block Island 02807	28
RI	United HealthCare of New England	Commercial MCO	Risk-based Capitation	1115	Statewide	34,355

SC	Medical Homes Network	PCCM	Fee-For-Service	1905(t)	Anderson, Dillion, Georgetown, Greenville, Horry, Marion, Marlboro, Oconee, Pickens, Spartanburg, Williamsburg	49,942
SC	Medically Fragile Children	Medical-only PAHP	Risk-based Capitation	1915(a)	Charleston County, Easley County, Richland County	151
SC	Palmetto SeniorCare (PACE)	PACE	Risk-based Capitation	PACE	Lexington, Richland	353
SC	Physicians Enhanced Program (PEP)	Medical-only PAHP	Physician Services Capitation	1915(a)	Anderson, Beaufort, Berkeley, Charleston, Chester, Chesterfield, Darlington, Florence, Greenville, Hampton, Horry, Laurens, Newberry, Orangeburg, Pickens, Richland, Spartanburg, Sumter, Williamsburg	9,413
SC	Select Health of South Carolina, Incorporated (HMO)	Medicaid MCO	Risk-based Capitation	1915(a)	Aiken, Allendale, Anderson, Bamberg, Barnwell, Beaufort, Berkeley, Calhoun, Charleston, Cherokee, Chesterfield, Clarendon, Colleton, Darlington, Dillon, Dorchester, Edgefield, Fairfield, Florence, Greenville, Hampton, Horry, Jasper, Lee, Lexington, Marion, Marlboro, Newberry, Orangeburg, Pickens, Richland, Saluda, Spartanburg, Sumter, Union, Williamsburg	70,454
SC	Unison Health Plan of SC (HMO)	Medicaid MCO	Risk-based Capitation	1915(a)	Bamberg, Calhoun, Chesterfield, Clarendon, Darlington, Fairfield, Florence, Greenville, Lee, Lexington, Marion, Marlboro, Newberry, Orangeburg, Pickens, Richland, Sumter, Williamsburg	9,126
SD	Delta Dental	Dental PAHP	Risk-based Capitation	1915(a)	Statewide	99,240
SD	PRIME	PCCM	Fee-for-Service	1932(a)	Statewide	74,957
TN	Alexian Brothers Community Services	PACE	Risk-based Capitation	PACE	Hamilton	296
TN	Doral Dental of Tennessee, LLC	*Dental Benefit Manager	Administrative Services Fee	1115	Statewide	666,061
TN	First Health Services Corporation	*Pharmacy Benefit Manager	Administrative Services Fee	1115	Statewide	1,190,407
TN	John Deere	Commercial MCO	Risk-based Capitation	1115	Anderson, Bledsoe, Blount, Bradley, Campbell, Carter, Claiborne, Cocke, Franklin, Grainger, Greene, Grundy, Hamblen, Hamilton, Hancock, Hawkins, Jefferson, Johnson, Knox, Loudon, Marion, McMinn, Meigs, Monroe, Morgan, Polk, Rhea, Roane, Scott, Sequatchie, Sevier, Sullivan, Unicoi, Union, Washington	78,191
TN	Memphis Managed Care Corp. (TLC)	Medicaid MCO	Risk-based Capitation	1115	Benton, Carroll, Chester, Crockett, Decatur, Dyer, Fayette, Gibson, Hardeman, Hardin, Haywood, Henderson, Henry, Lake, Lauderdale, Madison, McNairy, Obion, Shelby, Tipton, Weakley	169,579
TN	Preferred Health Partnership/PHP	Medicaid MCO	Risk-based Capitation	1115	Anderson, Bledsoe, Blount, Bradley, Campbell, Carter, Claiborne, Cocke, Franklin, Grainger, Greene, Grundy, Hamblen, Hamilton, Hancock, Hawkins, Jefferson, Johnson, Knox, Loudon, Marion, Meminn, Meigs, Monroe, Morgan, Polk, Rhea, Roane, Scott, Sequatchie, Sevier, Sullivan, Unicoi, Union, Washington	104,598
TN	Premier Behavioral Systems of TN	MH/SUD PIHP	Non-risk Capitation	1115	Statewide	596,866
TN	TennCare Select	Medicaid MCO	Risk-based Capitation	1115	Statewide	408,214
TN	Tennessee Behavioral Health, Inc.	MH/SUD PIHP	Non-risk Capitation	1115	Statewide	593,541

TN	UAHC Omnicare	Medicaid MCO	Risk-based Capitation	1115	Lake, Obion, Weakley, Henry, Dyer, Crockett, Gibson, Carroll, Benton, Lauderdale, Haywood, Madison, Henderson, Decatur, Tipton, Fayette, Hardeman, Hardin, Chester, McNair, Shelby	117,405
TN	Unison Health Plan (BHP)	Commercial MCO	Risk-based Capitation	1115	Lake, Obion, Weakley, Henry, Dyer, Crockett, Gibson, Carroll, Benton, Lauderdale, Haywood, Madison, Henderson, Decatur, Tipton, Fayette, Hardeman, Hardin, Chester, McNair, Shelby	57,585
TN	Volunteer State Health Plan (Bluecare)	Commercial MCO	Risk-based Capitation	1115	Anderson, Bledsoe, Blount, Bradley, Campbell, Carter, Claiborne, Cocke, Franklin, Grainger, Greene, Grundy, Hamblen, Hamilton, Hancock, Hawkins, Jefferson, Johnson, Knox, Loudon, Marion, McMinn, Meigs, Monroe, Morgan, Polk, Rhea, Roane, Scott, Sequatchie, Sevier, Sullivan, Unicoi, Union, Washington	209,889
TN	Windsor (VHP Community Care)	Commercial MCO	Risk-based Capitation	1115	Davidson	44,946
TX	Amerigroup- STAR+PLUS	Medicaid MCO	Risk-based Capitation	1915(b), 1915(b)/(c)	Harris	26,099
TX	Amerigroup Texas	Medicaid MCO	Risk-based Capitation	1915(b)	Bastrop, Brazoria, Burnet, Caldwell, Collin, Dallas, Denton, Ellis, Fort Bend, Galveston, Harris, Hays, Hood, Hunt, Johnson, Kaufman, Lee, Montgomery, Navarro, Parker, Rockwell, Tarrant, Travis, Waller, Williamson, Wise	316,117
TX	Bienvivir Senior Health Service	PACE	Risk-based Capitation	PACE	79901, 79905, 79907, 79915, 79924, 79925, 79930, 79935, 79936	770
TX	Community First	Commercial MCO	Risk-based Capitation	1915(b)	Atascosa, Bexar, Comal, Guadalupe, Kendall, Medina, Wilson	53,736
TX	Community Health Choice	Commercial MCO	Risk-based Capitation	1915(b)	Brazoria, Fort Bend, Galveston, Harris, Montgomery, Waller	61,500
TX	El Paso First Premier	Commercial MCO	Risk-based Capitation	1915(b)	El Paso	36,298
TX	Evercare	Commercial MCO	Risk-based Capitation	1915(b), 1915(b)/(c)	Harris	33,155
TX	First Care	Commercial MCO	Risk-based Capitation	1915(b)	Crosby, Floyd, Garza, Hale, Hockley, Lamb, Lubbock, Lynn, Terry	17,152
TX	Jan Werner Adult Day Care Center	PACE	Risk-based Capitation	PACE	79015, 79101, 79104, 79106, 79111, 79118, 79119, 79121, 79124	137
TX	Parkland Community Health Plan	Commercial MCO	Risk-based Capitation	1915(b)	Collin, Dallas, Ellis, Hunt, Kaufman, Navarro, Rockwall	94,502
TX	Superior Health Plan	Commercial MCO	Risk-based Capitation	1915(b)	Atascosa, Bastrop, Bexar, Burnet, Caldwell, Comal, El Paso, Guadalupe, Hays, Hudspeth, Kendall, Lee, Medina, Travis, Williamson, Wilson	145,886
TX	Texas Children's Health Plan	Commercial MCO	Risk-based Capitation	1915(b)	Brazoria, Fort Bend, Galveston, Harris, Montgomery, Waller	82,718
TX	Texas Health Network	PCCM	Other	1915(b), 1915(b)/(c)	Harris	14,836

					Anderson, Andrews, Angenna, Archer, Armstrong, Atascosa, Austin, Bailey, Bandera, Baylor, Bell, Bend, Bexar, Blanco, Borden, Bosque, Bowie, Brazoria, Brazos, Brewster, Briscoe, Brooks, Brown, Burleson, Callahan, Cameron, Camp, Carson, Cass, Castro, Chambers, Cherokee, Childress, Clay, Cochran, Coke, Coleman, Collingsworth, Colorado, Comal, Comanche, Concho, Cooke, Coryell, Cottle, Crane, Crockett, Crosby, Culberson, Dallam, Dallas County, Dawson, De Witt, Deaf Smith, Delta, Dickens, Dimmit, Donley, Duval, Eastland, Ector, Edwards, Ellis, Erath, Falls, Fannin, Fayette, Fisher, Floyd, Foard, Fort, Franklin, Freestone, Frio, Gaines, Galveston, Garza, Gillespie, Glasscock, Goliad, Gonzales, Gray, Grayson, Gregg, Grimes, Guadalupe, Hale, Hall, Hamilton, Hansford, Hardeman, Hardin, Harris, Harrison, Hartley, Haskell, Hemphill, Henderson, Hidalgo, Hill, Hockley, Hopkins, Houston, Howard, Hudspeth, Hunt, Hutchinson, Irion, Jack, Jackson, Jasper, Jeff Davis, Jefferson, Jefferson County, Jim Hogg, Jones, Karnes, Kaufman, Kendal, Kenedy, Kent, Kerr, Kimble, King, Kinney, Knox, La Salle, Lamar, Lamb, Lampasas	
TX	Texas Health Network (STAR)	PCCM	Fee-For-Service	1915(b)		924,845
TX	Continuation of Geographic Area Served for Texas Health Network (STAR)				Live Oak, Llano, Loving, Lubbock, Lynn, Madison, Marion, Martin, Mason, Matagorda, Maverick, McCulloh, McLennan, McMullen, Medina, Menard, Midland, Milam, Mills, Mitchell, Montague, Montgomery, Navarro, Newton, Nolan, Ochiltree, Oldham, Orange, Palo, Panola, Parmer, Pecos, Pinto, Polk, Potter, Presidio, Rains, Randall, Reagan, Real, Red, Reeves, River, Roberts, Robertson, Rockwall, Runnels, Rusk, Sabine, San Augustine, San Jacinto, San Saba, Schleicher, Scurry, Shackelford, Shelby, Smith, Sterling, Stonewall, Sutton, Swisher, Taylor, Terrell, Terry, Throckmorton, Titus, Tom Green, Trinity, Tyler, Upshur, Upton, Uvalde, Val, Van Zandt, Verbe, Walker, Waller, Ward, Washington, Webb, Wharton, Wheeler, Wichita, Wilbarger, Willacy, Wilson, Winkler, Woodm Yoakum, Young, Zapata, Zavala	
TX	ValueOptions	MH/SUD PIHP	FFS/Some Risk Based Capitation	1915(b)	Collin County, Dallas County, Ellis County, Hunt County, Kaufman County, Navarro County, Rockwall County	307,645
UT	Bear River Mental Health	Mental Health PIHP	Risk-based Capitation	1115, 1915(b)	Box Elder, Cache, Rich	11,244
UT	Central Utah Mental	Mental Health PIHP	Risk-based Capitation	1115, 1915(b)	Juab, Millard, Piute, Sanpete, Sevier, Wayne	7,133
UT	Davis Mental Health	Mental Health PIHP	Risk-based Capitation	1115, 1915(b)	Davis	14,902
UT	Four Corners Mental Health	Mental Health PIHP	Risk-based Capitation	1115, 1915(b)	Carbon, Emery, Grand	4,681
UT	Healthy U	Medical-only PIHP	Non-risk Capitation	1115, 1915(b)	Davis County, Salt Lake County, Utah County, Weber County	26,971
UT	IHC Health Plans Inc.	PCCM	Fee-For-Service	1115, 1915(b)	Davis County, Salt Lake County, Utah County, Weber County	46,336
UT	Molina Healthcare of Utah (Molina Plus)	Medical-only PIHP	Non-risk Capitation	1115	Beaver, Box Elder, Cache, Garfield, Iron, Kane, Millard, Morgan, Piute, Rich, San Juan, Sanpete, Summit, Toole, Washington, Wayne	3,794
UT	Molina Healthcare of Utah (Molina)	Medical-only PIHP	Non-risk Capitation	1115, 1915(b)	Davis, Salt Lake, Utah, Weber	40,424
UT	Non-Emergency Transportation	Transp PAHP	Risk-based Capitation	1915(b)	Statewide	151,305

UT	Northeastern Counseling Center	Mental Health PIHP	Risk-based Capitation	1115, 1915(b)	Daggett, Duchesne, Uintah	3,991
UT	Southwest Mental Health	Mental Health PIHP	Risk-based Capitation	1115, 1915(b)	Beaver, Garfield, Iron, Kane, Washington	15,049
UT	Valley Mental Health	Mental Health PIHP	Risk-based Capitation	1115, 1915(b)	Salt Lake, Summit, Tooele	74,195
UT	Wasatch Mental Health	Mental Health PIHP	Risk-based Capitation	1115, 1915(b)	Utah, Wasatch	28,376
UT	Weber Mental Health	Mental Health PIHP	Risk-based Capitation	1115, 1915(b)	Morgan, Weber	19,051
VA	AMERIGROUP Virginia, Inc.	Medicaid MCO	Risk-based Capitation	1915(b)	Alexandria City, Arlington County, Fairfax City, Fairfax County, Falls Church City, Fauquier County, Loudoun County, Manassas City, Manassas Park City, Prince William County	19,463
VA	CareNet	Commercial MCO	Risk-based Capitation	1915(b)	Amelia County, Caroline County, Charles City County, Chesterfield County, Colonial Heights City, Cumberland County, Dinwiddie County, Essex County, Goochland County, Hanover County, Henrico County, Hopewell City, King and Queen County, King William County, Lancaster County, Lunenburg County, Mathews County, Mecklenburg County, Middlesex County, New Kent County, Northumberland County, Nottoway County, Petersburg City, Powhatan County, Prince George County, Richmond City, Richmond County, Surry County, Sussex County, Westmoreland County	15,270
VA	Healthkeepers, Inc.	Commercial MCO	Risk-based Capitation	1915(b)	Albemarle County, Alexandria City, Amelia County, Arlington County, Brunswick County, Buckingham County, Caroline County, Charles City County, Charlottesville City, Chesterfield County, Clarke County, Colonial Heights City, Cumberland County, Dinwiddie County, Emporia City, Fairfax City, Fairfax County, Falls Church City, Fauquier County, Fluvanna County, Frederick County, Fredericksburg City, Goochland County, Greene County, Greensville County, Halifax County, Hanover County, Henrico County, Hopewell County, King George County, Loudoun County, Louisa County, Lunenburg County, Madison County, Manassas County, Manassas Park City, Mecklenburg County, Nelson County, New Kent County, Nottoway County, Orange County, Page County, Petersburg County, Powhatan County, Prince Edward County, Prince George County, Prince William County, Rappahannock County, Richmond County, Shenandoah County, Spotsylvania County, Stafford County, Sussex County, Warren County, Westmoreland County, Winchester County	92,576
VA	LogistiCare Solutions	Transp PAHP	Risk-based Capitation	1915(b)	Statewide	320,338

VA	MEDALLION	PCCM	Fee-For-Service	1915(b)	Alleghany County, Amherst County, Appomattox County, Bath County, Bedford City, Bedford County, Bland County, Botetourt County, Bristol City, Buchanan County, Buena Vista City, Campbell County, Carroll County, Charlotte County, Clifton Forge City, Covington City, Craig County, Danville City, Dickenson County, Floyd County, Franklin County, Galax County, Giles County, Grayson County, Henry County, Highland County, Lee County, Lexington City, Lynchburg City, Martinsville City, Montgomery County, Norton City, Patrick County, Pittsylvania County, Pulaski County, Radford City, Roanoke City, Roanoke County, Rockbridge County, Russell County, Salem City, Scott County, Smyth County, Tazewell County, Washington County, Wise County, Wythe County	61,159
VA	Optima Family Care	Commercial MCO	Risk-based Capitation	1915(b)	Accomack County, Albemarle County, Amenia County, Augusta County, Brunswick County, Buckingham County, Caroline County, Charles City County, Charlotte County, Charlottesville City, Chesapeake City, Chesterfield County, Clarke County, Colonial Heights City, Cumberland County, Danville City, Dinwiddie County, Emporia City, Essex County, Fluvanna County, Franklin City, Frederick County, Gloucester County, Goochland County, Greene County, Greensville County, Halifax County, Hampton City, Hanover County, Harrisonburg City, Henrico County, Hopewell City, Isle of Wright County, James City County, King and Queen County, King William County, Lancaster County, Louisa County, Lunenburg County, Madison County, Nelson County, New Kent County, Newport News City, Norfolk City, Northampton County, Northumberland County, Nottoway County, Orange County, Page County, Petersburg City, Pittsylvania County, Poquoson City, Portsmouth City, Powhatan County, Prince Edward County, Prince George County, Rappahannock County, Richmond City, Richmond County, Rockingham County, Shenandoah County, Southampton County, Staunton City	114,527
VA	Continuation of Geographic Area Served for VA - Optima Family Care				Suffolk City, Surry County, Sussex County, Virginia Beach City, Warren County, Waynesboro City, Westmoreland County, Williamsburg City, Winchester City, York County	
VA	Peninsula Health Care, Inc.	Commercial MCO	Risk-based Capitation	1915(b)	Essex County, Gloucester County, Hampton City, Isle of Wight County, James City County, King and Queen County, King William County, Mathews County, Middlesex County, Newport News City, Northumberland County, Poquoson City, Richmond County, Surry County, Willimasburg City, York County	19,570
VA	Priority Health Care, Inc.	Commercial MCO	Risk-based Capitation	1915(b)	Accomack County, Chesapeake City, Franklin City, Norfolk City, Northampton County, Portsmouth City, Southampton County, Suffolk City, Virginia Beach City	25,621

VA	Virginia Premier	Medicaid MCO	Risk-based Capitation	1915(b)	Accomack County, Albemarle County, Amelia County, Augusta County, Bedford City, Bedford County, Botetourt County, Brunswick County, Buckingham County, Buena Vista City, Caroline County, Charles City County, Charlottesville City, Chesapeake City, Chesterfield County, Clarke County, Colonial Heights City, Culpeper County, Cumberland County, Dinwiddie County, Emporia City, Floyd County, Fluvanna County, Franklin City, Franklin County, Frederick County, Fredericksburg City, Giles County, Goochland County, Greene County, Greensville County, Hampton City, Hanover County, Harrisonburg City, Henrico County, Henry County, Hopewell City, King George County, King William County, Lexington City, Louisa County, Lunenburg County, Madison County, Martinsville County, Mecklenburg County, Montgomery County, Nelson County, New Kent County, Newport News City, Norfolk City, Northampton County, Nottoway County, Orange County, Page County, Patrick County, Petersburg City, Portsmouth City, Powhatan County, Prince Edward County, Prince George County, Pulaski County, Radford County, Rappahannock County, Richmond City, Roanoke City	97,374
VA	Continuation of Geographic Area Served for VA - Virginia Premier				Roanoke County, Rockbridge County, Rockingham County, Salem City, Shenandoah County, Southampton County, Spotsylvania County, Stafford County, Staunton City, Suffolk City, Surry County, Sussex County, Virginia Beach City, Warren County, Waynesboro City, Westmoreland County, Winchester City, Wythe County	
VT	Global Commitment to Health	Medicaid MCO	Risk-based Capitation	1115	Statewide	86,347
WA	Asuris Northwest Health	Commercial MCO	Risk-based Capitation	1932(a)	Spokane County	1,197
WA	Columbia United Providers	Commercial MCO	Risk-based Capitation	1932(a)	Clark, Klickitat, Skamania	31,656
WA	Community Health Plans	Commercial MCO	Risk-based Capitation	1932(a)	Adams, Benton, Chelan, Clark, Cowlitz, Douglas, Ferry, Franklin, Grant, Grays Harbor, Island, Jefferson, King, Kitsap, Klickitat, Lewis, Lincoln, Mason, Okanogan, Pacific, Pend Oreille, Pierce, Skagit, Skamania, Snohomish, Spokane, Stevens, Thurston, Walla Walla, Whatcom, Yakima	145,755
WA	Evercare Premier	Commercial MCO	Risk-based Capitation	1932(a)	King, Pierce	52
WA	Group Health	Medicaid MCO	Risk-based Capitation	1932(a)	King, Kitsap, Pierce, Snohomish, Spokane, Thurston	19,464
WA	Kaiser Foundation Health Plan	Commercial MCO	Risk-based Capitation	1932(a)	Clark	1,236
WA	McKesson Health Solutions LLC	Disease Management PAHP	Risk-based Capitation	1915(b)	Statewide	63,320
WA	Molina	Commercial MCO	Risk-based Capitation	1932(a)	Adams, Asotin, Benton, Chelan, Clallam, Columbia, Cowlitz, Douglas, Ferry, Franklin, Garfield, Grant, Grays Harbor, King, Kitsap, Kittitas, Lewis, Lincoln, Mason, Okanogan, Pacific, Pend Oreille, Pierce, San Juan, Skagit, Snohomish, Spokane, Stevens, Thurston, Walla Walla, Whatcom, Whitman, Yakima	251,263
WA	PCCM Tribal Clinics	PCCM	Fee-For-Service	1932(a)	Statewide	3,794

WA	Providence ElderPlace - Seattle	PACE	Risk-based Capitation	PACE	King	226
WA	Regence Blue Shield	Commercial MCO	Risk-based Capitation	1932(a)	Clallam, Grays Harbor, Island, Pacific, Pierce, San Juan, Skagit, Snohomish, Yakima	34,715
WA	Regional Support Networks	Mental Health PIHP	Risk-based Capitation	1915(b)	Chelan/Douglas, Clark, Grays Harbor, Greater Columbia, King, North Central, North Sound, Northeast Washington, Peninsula, Pierce, Southwest, Spokane, Thurston/Mason, Timberland	858,052
WI	Abri Health Plan -- BadgerCare (SCHIP)	Commercial MCO	Risk-based Capitation	1115	Milwaukee, Ozaukee, Racine, Waukesha	844
WI	Abri Health Plan -- Medicaid HMO	Commercial MCO	Risk-based Capitation	1932(a)	Milwaukee, Ozaukee, Racine, Waukesha	7,076
WI	Abri Health Plan -- SSI	Commercial MCO	Risk-based Capitation	1932(a)	Kenosha, Milwaukee, Racine, Waukesha	1,225
WI	Children's Community Health Plan - Badgercare	Commercial MCO	Risk-based Capitation	1115	Kenosha, Milwaukee, Racine, Waukesha	235
WI	Children's Community Health Plan - Medicaid	Commercial MCO	Risk-based Capitation	1932(a)	Kenosha, Milwaukee, Racine, Waukesha	1,695
WI	Community Care Health Plan	Commercial MCO	Risk-based Capitation	1115	Milwaukee	190
WI	Community Care Organization	PACE	Risk-based Capitation	PACE	Milwaukee	682
WI	Community Health Partnership -- Partnership	Commercial MCO	Risk-based Capitation	1115	Chippewa, Dunn, Eau Claire	827
WI	Community Living Alliance	Commercial MCO	Risk-based Capitation	1115	Dane	306
WI	Compcare (formerly Atrium Health Plan) -- BadgerCare SCHIP	Commercial MCO	Risk-based Capitation	1115	Adams, Ashland, Barron, Bayfield, Buffalo, Burnett, Chippewa, Clark, Crawford, Douglas, Dunn, Eau Claire, Grant, Jackson, Juneau, La Crosse, Marquette, Monroe, Pepin, Pierce, Polk, Richland, Rusk, Sauk, Sawyer, St. Croix, Trempealeau, Vernon, Washburn	6,787
WI	Compcare (formerly Atrium Health Plan) -- Medicaid HMO	Commercial MCO	Risk-based Capitation	1932(a)	Adams, Ashland, Barron, Bayfield, Buffalo, Burnett, Chippewa, Clark, Crawford, Douglas, Dunn, Eau Claire, Grant, Jackson, Juneau, La Crosse, Marquette, Monroe, Pepin, Pierce, Polk, Richland, Rusk, Sauk, Sawyer, St. Croix, Trempealeau, Vernon, Washburn	20,817
WI	Dane County Human Services Department -- CCF	MH/SUD PIHP	Risk-based Capitation	1915(a)	Dane	119
WI	Dean Health Plan -- Badger Care (SCHIP)	Commercial MCO	Risk-based Capitation	1115	Dane, Jefferson, Rock, Sauk, Walworth	1,562
WI	Dean Health Plan -- Medicaid HMO	Commercial MCO	Risk-based Capitation	1932(a)	Dane, Jefferson, Rock, Sauk, Walworth	7,270
WI	Elder Care Of Dane County - Partnership	Medicaid MCO	Risk-based Capitation	1115	Dane	550
WI	Family Care	Commercial MCO	Risk-based Capitation	1915(b)/(c)	Fond du Lac County, LaCrosse County, Milwaukee County, Portage County, Richland County	9,729
WI	Group Health Cooperative Of Eau Claire -- BadgerCare SCHIP	Commercial MCO	Risk-based Capitation	1115	Ashland, Barron, Bayfield, Buffalo, Burnett, Chippewa, Clark, Douglas, Dunn, Eau Claire, Jackson, Pepin, Pierce, Polk, Price, Rusk, Sawyer, St. Croix, Taylor, Trempealeau, Washburn	3,844

WI	Group Health Cooperative Of Eau Claire -- Medicaid HMO	Commercial MCO	Risk-based Capitation	1932(a)	Ashland, Barron, Bayfield, Buffalo, Burnett, Chippewa, Clark, Crawford, Douglas, Dunn, Eau Claire, Jackson, Pepin, Pierce, Polk, Rusk, Sawyer, St. Croix, Taylor, Trempealeau, Washburn	11,848
WI	Group Health Cooperative Of South Central WI -- BadgerCare SCHIP	Commercial MCO	Risk-based Capitation	1115	Dane	470
WI	Group Health Cooperative Of South Central WI -- Medicaid HMO	Commercial MCO	Risk-based Capitation	1932(a)	Dane	3,219
WI	Health Advantage -- CLA	Commercial MCO	Risk-based Capitation	1932(a)	Dane	196
WI	Health Tradition Health Plan -- BadgerCare SCHIP	Commercial MCO	Risk-based Capitation	1115	Buffalo, Crawford, La Crosse, Monroe, Trempealeau, Vernon	1,300
WI	Health Tradition Health Plan -- Medicaid HMO	Commercial MCO	Risk-based Capitation	1932(a)	Buffalo, Crawford, La Crosse, Monroe, Trempealeau, Vernon	4,635
WI	Independent Care Health Plan -- SSI	Commercial MCO	Risk-based Capitation	1932(a)	Milwaukee	8,616
WI	Managed Health Services -- BadgerCare SCHIP	Commercial MCO	Risk-based Capitation	1115	Brown, Calumet, Clark, Dodge, Fond Du Lac, Green Lake, Jefferson, Kenosha, Langlade, Manitowoc, Marathon, Milwaukee, Oconto, Outagamie, Ozaukee, Racine, Rock, Shawano, Sheboygan, Taylor, Walworth, Washington, Waukesha, Waupaca, Waushara, Winnebago, Wood	16,484
WI	Managed Health Services -- Medicaid HMO	Medicaid MCO	Risk-based Capitation	1932(a)	Brown, Calumet, Clark, Dodge, Fond Du Lac, Green Lake, Jefferson, Kenosha, Langlade, Manitowoc, Marathon, Milwaukee, Oconto, Outagamie, Ozaukee, Racine, Rock, Shawano, Sheboygan, Taylor, Walworth, Washington, Waukesha, Waupaca, Waushara, Winnebago, Wood	99,429
WI	Managed Health Services -- SSI	Medicaid MCO	Risk-based Capitation	1932(a)	Kenosha, Milwaukee, Racine, Waukesha	3,241
WI	MercyCare Insurance Company -- BadgerCare SCHIP	Commercial MCO	Risk-based Capitation	1115	Dane, Green, Jefferson, Rock, Walworth	1,721
WI	MercyCare Insurance Company -- Medicaid HMO	Commercial MCO	Risk-based Capitation	1932(a)	Dane, Green, Jefferson, Rock, Walworth	7,887
WI	Milwaukee County Human Services Department -- Wraparound Milwaukee	MH/SUD PIHP	Risk-based Capitation	1915(a)	Milwaukee	518
WI	Network Health Plan -- BadgerCare SCHIP	Commercial MCO	Risk-based Capitation	1115	Brown, Calumet, Clark, Dodge, Fond Du Lac, Green Lake, Jefferson, Kenosha, Langlade, Manitowoc, Marathon, Milwaukee, Oconto, Outagamie, Ozaukee, Portage, Racine, Shawano, Sheboygan, Taylor, Walworth, Washington, Waukesha, Waupaca, Waushara, Winnebago, Wood	8,413
WI	Network Health Plan -- Medicaid HMO	Commercial MCO	Risk-based Capitation	1932(a)	Brown, Calumet, Dodge, Fond Du Lac, Green Lake, Jefferson, Kenosha, Manitowoc, Marathon, Milwaukee, Outagamie, Ozaukee, Portage, Racine, Sheboygan, Walworth, Washington, Waukesha, Waupaca, Waushara, Winnebago, Wood	46,252
WI	Network Health Plan - SSI	Commercial MCO	Risk-based Capitation	1932(a)	Kenosha, Milwaukee, Racine, Waukesha	926
WI	Security Health Plan -- BadgerCare SCHIP	Commercial MCO	Risk-based Capitation	1115	Adams, Ashland, Barron, Chippewa, Clark, Eau Claire, Forest, Iron, Jackson, Juneau, Langlade, Lincoln, Marathon, Oconto, Oneida, Polk, Portage, Price, Rusk, Sawyer, Shawano, Taylor, Vilas, Washburn, Waupaca, Waushara, Wood	5,845

WI	Security Health Plan -- Medicaid HMO	Commercial MCO	Risk-based Capitation	1932(a)	Adams, Ashland, Barron, Chippewa, Clark, Eau Claire, Forest, Iron, Jackson, Juneau, Langlade, Lincoln, Marathon, Oconto, Oneida, Polk, Portage, Price, Rusk, Sawyer, Shawano, Taylor, Vilas, Washburn, Waupaca, Waushara, Wood	16,239
WI	UnitedHealthcare of WI -- BadgerCare SCHIP	Commercial MCO	Risk-based Capitation	1115	Milwaukee	14,334
WI	UnitedHealthcare of WI -- Medicaid HMO	Commercial MCO	Risk-based Capitation	1932(a)	Brown, Calumet, Fond du Lac, Green Lake, Kenosha, Langlade, Manitowoc, Marquette, Menominee, Milwaukee, Oconto, Outagamie, Ozaukee, Portage, Racine, Shawano, Sheboygan, Washington, Waukesha, Waupaca, Waushara, Winnebago	81,647
WI	UnitedHealthcare of WI -- SSI	Commercial MCO	Risk-based Capitation	1932(a)	Kenosha, Milwaukee, Racine, Waukesha	2,814
WI	Unity Health Insurance -- BadgerCare SCHIP	Commercial MCO	Risk-based Capitation	1115	Dane	510
WI	Unity Health Insurance -- Medicaid HMO	Commercial MCO	Risk-based Capitation	1932(a)	Dane	3,004
WV	Carelink Health Plan	Commercial MCO	Risk-based Capitation	1915(b)	Boone, Clay, Fayette, Jackson, Kanawha, Lincoln, Logan, Mingo, Nicholas, Pleasants, Putnam, Raleigh, Tyler, Wetzel, Wirt, Wood	28,836
WV	Health Plan of the Upper Ohio Valley	Commercial MCO	Risk-based Capitation	1915(b)	Barbour, Brooke, Doddridge, Gilmer, Hancock, Harrison, Lewis, Marion, Marshall, Monongalia, Ohio, Pleasants, Preston, Randolph, Ritchie, Taylor, Tucker, Tyler, Upshur, Wetzel, Wirt, Wood	34,795
WV	Physician Assured Access System	PCCM	Fee-For-Service	1915(b)	Statewide	22,162
WV	Unicare Health Plan of WV	Commercial MCO	Risk-based Capitation	1915(b)	Barbour, Berkeley, Boone, Braxton, Calhoun, Clay, Doddridge, Fayette, Gilmer, Greenbrier, Hampshire, Harrison, Jackson, Jefferson, Kanawha, Lewis, Lincoln, Logan, Marion, Marshall, McDowell, Mercer, Mineral, Mingo, Monongalia, Monroe, Morgan, Nicholas, Ohio, Pleasants, Pocahontas, Preston, Putnam, Raleigh, Randolph, Ritchie, Roane, Summers, Taylor, Tucker, Tyler, Upshur, Webster, Wetzel, Wirt, Wood, Wyoming	73,826
					Total Number of Enrollees:	42,803,651

Blank or 0 "Number of Enrollees" indicates Plan has not been implemented as of 6/30/2006

* Indicates the structure of the Managed Care Entity is "Other" and not considered a PCCM, MCO, HIO, PIHP, PAHP or PACE

2006 ENROLLMENT FACTS SHEET (MAJOR CHANGES FROM 6/30/2005 – 6/30/2006)

- Alabama – The State Medicaid Enrollment decrease was due to disenrollment of women in the Maternity Care Program⁴ who had not utilized services in 18 months or more.
- Florida – The MediPass³ enrollment decrease was due to some of the enrollees transitioning over to MCOs. Health and Home Connection¹ is now United Healthcare dba Evercare¹.
- Georgia – The State Medicaid Managed Care Enrollment decrease was due to disenrollment of some populations in the Non-Emergency Transportation¹⁰ program.
- Indiana – As a result of the termination of PCCM(PrimeStep)³, all PCCM enrollees were transitioned over to MCOs.
- Louisiana - The State Medicaid Managed Care Enrollment decrease was due to a large number of recipients left LA post Katrina and Rita hurricanes.
- Michigan - Northern Michigan CMH⁶ is now North County CMH⁶.
- Mississippi – The State Medicaid Enrollment decrease was due to Hurricane Katrina and the re-determination of eligibility criteria.
- Missouri – The State Medicaid Enrollment decrease was due to budget changes that reduced and eliminated eligibility for certain population groups.
- North Carolina – The State was unable to determine the actual managed care enrollment because they were not able to separate their PCCM enrollees that are also enrolled in their mental health program. Therefore, the State’s managed care enrollment is based upon their PCCM and MCO enrollment.
- Pennsylvania – Life Agnes was converted from a Medical-only PIHP to a PACE.
- Puerto Rico – The State Medicaid Enrollment increase was due to the inclusion of Aged, Blind and Disabled population.
- South Carolina – The State incorrectly reported the State Medicaid and Managed Care Enrollment numbers using their fiscal year end numbers in 2005 instead of June 30th numbers. The State Medicaid Managed Care Enrollment increase was due to the expansion of their Medical Homes Network³.
- Tennessee – The State Medicaid Enrollment decrease was due to the disenrollment of TenCare adult expansion population.
- Wisconsin – Atrium Health Plan¹ is now Compcare¹.

¹ Commercial MCO

² Medicaid-only MCO

³ PCCM

⁴ Medical-only PIHP

⁵ Medical-only PAHP

⁶ Mental Health PIHP

⁷ Dental PAHP

⁸ PACE

⁹ Disease Management PAHP

¹⁰ Transportation PAHP

¹¹ Other

NEW MEDICAID MANAGED CARE PLANS AS OF 6/30/2006

- Alaska – Non-Emergency Transportation¹¹ is a new plan under the Non-Emergency Transportation program.
- Florida – Total Health Care¹, Universal Healthcare¹, and Vista South Florida¹ are new MCO plans under the Managed Health Care program.
- Missouri – Non-Emergency Medical Transportation (NEMT)¹⁰ is a new transportation broker under the MC+ Managed Care/1915(b) program.
- New Mexico - ValueOptions⁶ is a new mental health plan under the New Mexico Salud! program.
- New York – AmeriChoice of New York/Medicaid Advantage¹, GHI/HMO Select¹, GHI/Medicaid Advantage¹, HIP Health Plan/Medicaid Advantage¹, Liberty Health Advantage/Medicaid Advantage¹, Managed Health Inc/Medicaid Advantage, Neighborhood Health Provider/Medicaid Advantage¹, and NYS Catholic Health Plan/Fideli/Medicaid Advantage¹ are new MCO plans under the Partnership Plan-Medicaid Advantage program.
- Ohio – Amerigroup Ohio², Gateway Healthcare of Ohio², Molina Healthcare of Ohio², and Unison Health Plan of Ohio² are new MCO plans under the State Plan Amendment for Ohio's Full-Risk Managed Care program.
- Puerto Rico – American Health Medicare¹, Auxilio Platino¹, COSVIMed¹, First Medical Health Plans¹, Humana Puerto Rico¹, MAPFRE Puerto Rico¹, MCS Life¹, MMM Healthcare, Inc.¹, PMC Medicare Choice¹, and Triple S¹ are new MCO plans under the Medicare Platino program.
- Rhode Island – PACE Organization of Rhode Island⁸ is a new PACE plan.
- South Carolina – Medically Fragile Children⁵ is a new Medical-only PAHP plan under the Medically Fragile Children program.
- Tennessee – Doral Dental of Tennessee¹¹ and First Health Services Coporation¹¹ are new plans under TennCare program.
- Virginia – LogistiCare Solutions¹⁰ is a new transportation PAHP plan under the Virginia Non-Emergency Transportation Services program.
- Washington – Kaiser Foundation Health¹ is a new MCO plan under Healthy Options program.

¹ Commercial MCO

² Medicaid-only MCO

³ PCCM

⁴ Medical-only PIHP

⁵ Medical-only PAHP

⁶ Mental Health PIHP

⁷ Dental PAHP

⁸ PACE

⁹ Disease Management PAHP

¹⁰ Transportation PAHP

¹¹ Other

TERMINATED MEDICAID MANAGED CARE PLANS AS OF 6/30/2006

- Florida – DiabetikSmart⁹ was terminated under the Managed Health Care program.
- Illinois – Humana Health Plan¹ and United HealthCare of Illinois¹ were terminated under the Voluntary Managed Care program.
- Indiana – Indiana Chronic Disease Management Program PCCM¹¹ was terminated under the Medicaid Select program.
- New York – FidelisCare HealthCare HealthLife Special Needs² and HealthFirst PHSP Special Needs² were terminated under the Partnership Plan Medicaid Managed Care program. ABC Health Plan² was terminated under the Partnership Plan-Family Health Plus and Partnership Plan Medicaid Managed Care programs. Elderplan¹¹ was terminated under the Managed Long Term Care program.
- Ohio – APS Healthcare Midwest⁹, Community Health Solutions of America LLC⁹, Paramount Enhanced Care Management⁹, and UC Health Partners⁹ were terminated under the Enhanced Care Management (EMC) program. Mediplan¹ was terminated under the PremierCare program.
- Pennsylvania – ION Health Plan-Vol was terminated under the Voluntary HMO Contracts program.
- Texas – Evercare(Medicare)¹ was terminated under the STAR+PLUS program.
- Washington – BHP Plus² was terminated under the Healthy Options program. Renaissance Health Care⁹ was terminated under the Disease Management program.

¹ Commercial MCO

² Medicaid-only MCO

³ PCCM

⁴ Medical-only PIHP

⁵ Medical-only PAHP

⁶ Mental Health PIHP

⁷ Dental PAHP

⁸ PACE

⁹ Disease Management PAHP

¹⁰ Transportation PAHP

¹¹ Other

Medicaid Managed Care Enrollment Report Glossary as of June 30, 2006

Terms used in "Managed Care Entity" column

- **Primary Care Case Management (PCCM) Provider** is a provider (usually a physician, physician group practice, or an entity employing or having other arrangements with such physicians, but sometimes with such physicians, but sometimes also including nurse practitioners, nurse midwives, or physician assistants who contracts directly with the State to locate, coordinate, and monitor covered primary care (and sometimes additional services). This category also includes those PIHPs that contract with the State as “primary care case managers.”
- **Commercial Managed Care Organization (MCO)** – A Commercial MCO is a health maintenance organization, an eligible organization with a contract under §1876 or a Medicare+Choice organization, a provider sponsored organization or any other private or public organization, which meets the requirements of §1902(w). A Commercial MCO provides **comprehensive services to both Medicaid and commercial and/or Medicare.**
- **Medicaid-only Managed Care Organization (MCO)** – A Medicaid-only MCO provides **comprehensive** services to only Medicaid beneficiaries, **not to commercial or Medicare enrollees.**
- **Health Insuring Organization (HIO)** – A HIO is a managed care entity which, by law, is exempt from certain rules governing MCO program operation such as the requirement for beneficiaries to have a choice of at least two managed care entities in mandatory programs.
- **Prepaid Inpatient Health Plan (PIHP)** – A PIHP is a prepaid **inpatient** health plan that provides less than comprehensive services on an at-risk or other than state plan reimbursement basis; and provides, arranges for, or otherwise has responsibility for the provision of any inpatient hospital or institutional services. {Comprehensive services are defined in 42 CFR 438.2} There are several types of PIHPs that States use to deliver a range of services. For example, a Mental Health (MH) PIHP is a managed care entity that provides only mental health services.
- **Prepaid Ambulatory Health Plan (PAHP)** – A PAHP is a prepaid **ambulatory** health plan that provides less than comprehensive services on an at-risk or other than state plan reimbursement basis, and does not provide, arrange for, or otherwise have responsibility for the provision of any inpatient hospital or institutional services. {Comprehensive services are defined in 42 CFR 438.2} There are several types of PAHPs that States use to deliver a range of services. For example, a Dental PAHP is a managed care entity that provides only dental services.
- **Program for All-inclusive Care for the Elderly (PACE)** – program that provides pre-paid, capitated comprehensive, health care services to the frail elderly.
- **Other** – The structure of the managed care plan is not considered a PCCM, PIHP, PAHP, Commercial MCO, Medicaid-only MCO, HIO, or PACE.

Terms used in "Reimbursement Arrangement" Column

- **Risk-based Capitation** –The managed care entity is paid for providing services to enrollees primarily through capitation. (There may be other payments under the contract such as incentive arrangements or risk sharing.)
- **Non-risk Capitation** – The managed care entity is paid for providing services to enrollees through capitation, but payments are settled at the end of the year at amounts that do not exceed the FFS cost for services actually provided, plus an amount for administration.
- **Fee-For-Service (FFS)** – The managed care entity is paid for providing services to enrollees solely through fee-for service payments plus in most cases, a case management fee.
- **Other** – The managed care entity is providing services to enrollees through means other than through capitation or fee-for-service reimbursements.