

Adobe 9 Documents Filed in CM/ECF

Previously, PDF documents created with Adobe 9 could be filed in CM/ECF, but, in order to make the Adobe 9 documents readable in CM/ECF, filers had to change a few settings on their computer. With this cm/ecf release, Adobe 9 documents can be filed in CM/ECF without making any changes to the filer's computer.

CM/ECF Filers MUST have Java 6

This is not new to this CM/ECF release, but it is still a requirement of filing documents in CM/ECF. The computer that is being used to file documents in CM/ECF must have at least Java **Version 6 Update 1** in order to log into CM/ECF. You can check your computer's Java version by going to www.java.com. Click "Do I have Java?".

Macintosh and CM/ECF

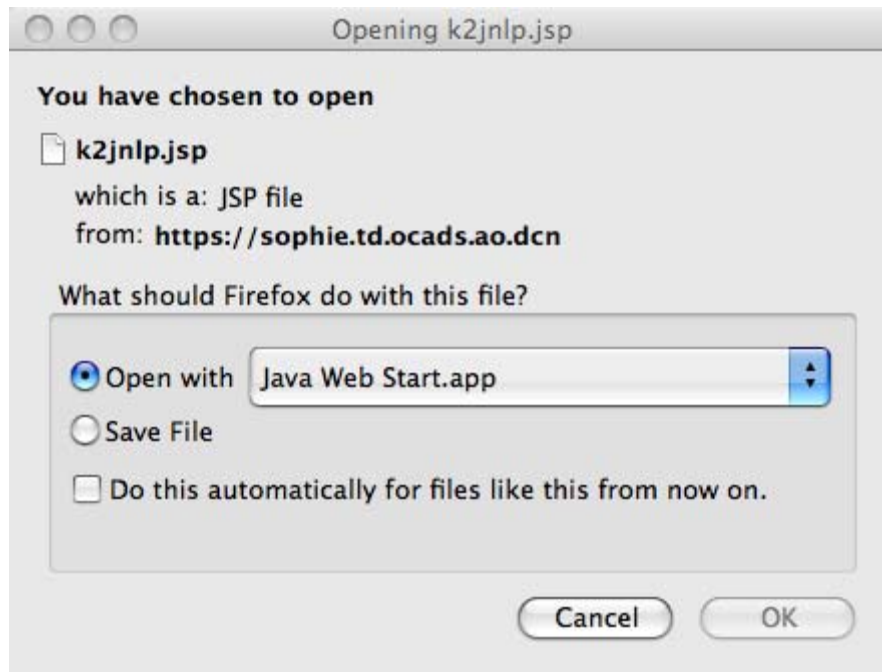
The Apple Macintosh platform can be used to run all parts of the Appellate case management system with no extra software.

Prerequisites

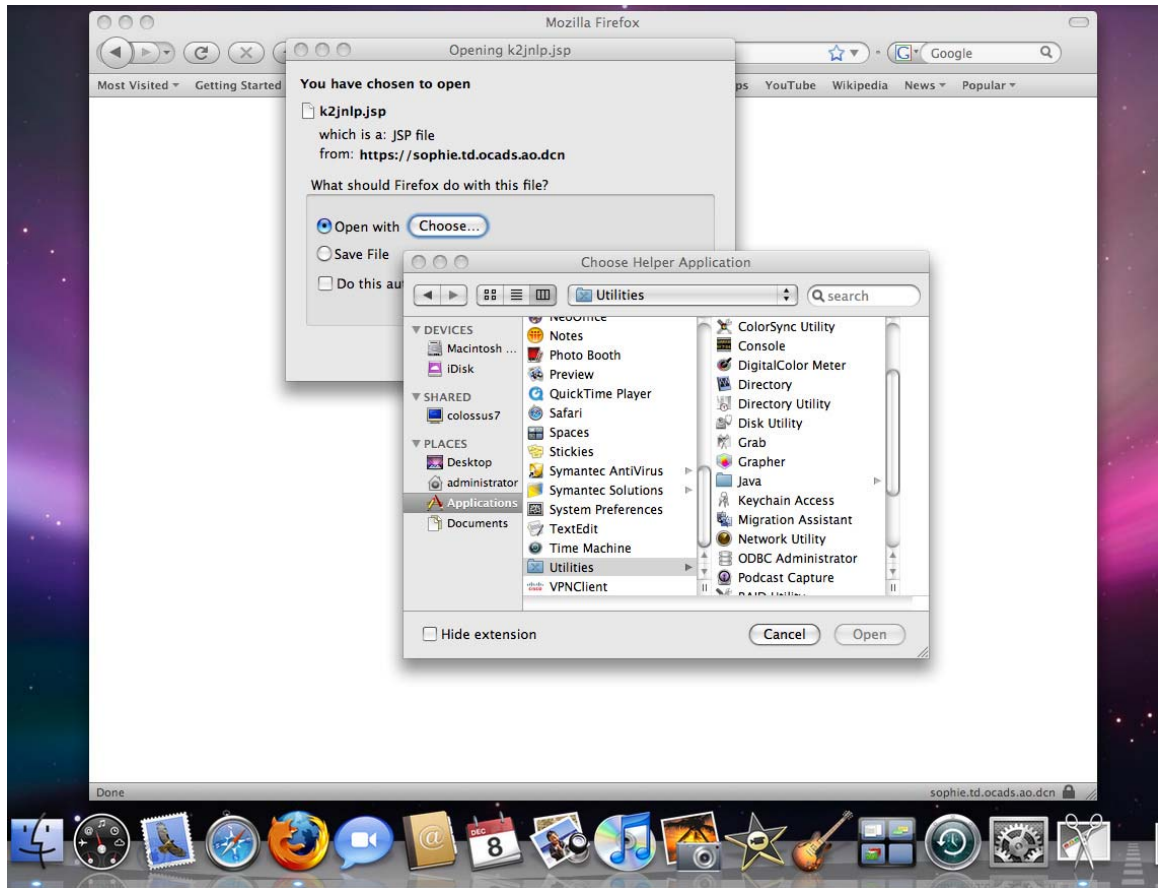
Both the hardware and the operating system (OS X) must be 64 bits. All Macintosh computers made in about the last 18 months are 64-bit capable. The current version of OS X, Leopard (10.5) is the first version for which Apple has provided the current version of Java. So in summary you need:

- 64-bit capable Macintosh
- OS X 10.5 (or higher)

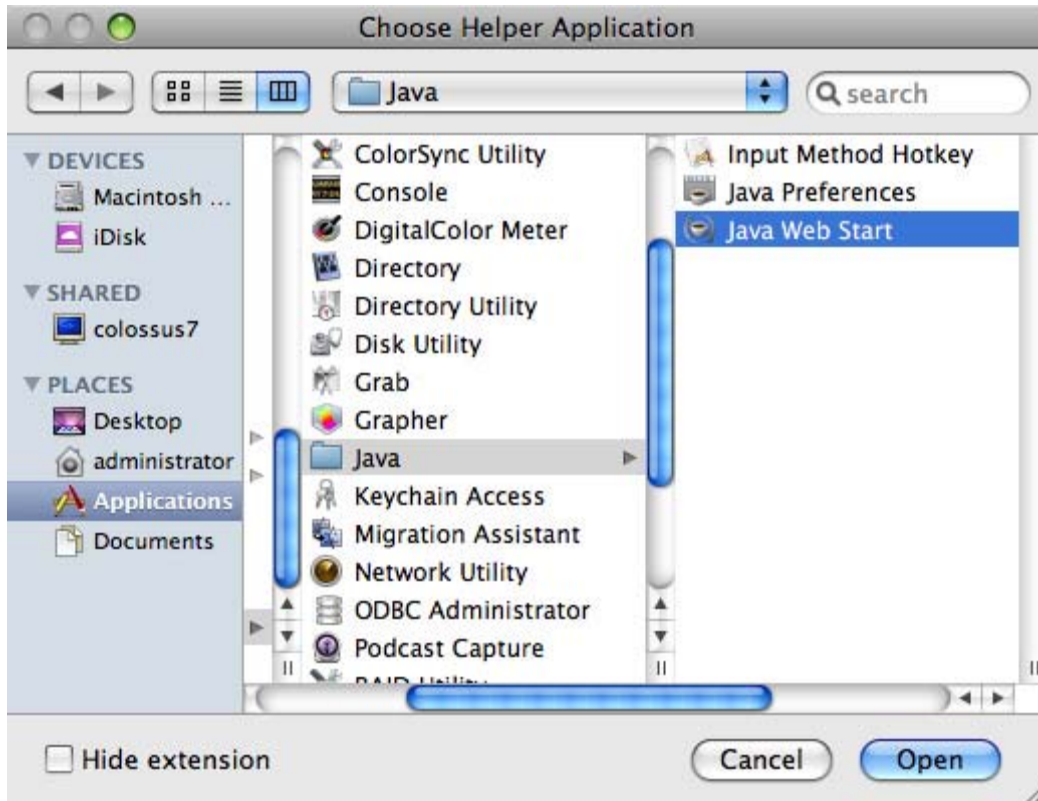
After the ID and password are provided and you press the Login button, the browser may ask what to do next. This one-time setup is to associate the Java Network Launching Protocol (JNLP) file with Java Web Start. The following dialog is shown:



Click the option “Do this automatically for files like this from now on” so that you don’t have to do this twice. If it has the option “Open with Java Web Start” as shown above, just pick this and click OK. It may also say “Open with” with just a Choose button. If so, press Choose, and you’ll see something like this, including a “Choose Helper Application” dialog:



Click on Utilities in the left-hand list (you'll probably have to scroll down as shown above), then on Java in the right-hand list. This will bring up a final list:



Here, pick “Java Web Start” and press the Open button. This will bring you back to the first dialog, and here press OK to go on. This will show “Java Starting” and then may ask you to authenticate the web server (Apache) certificate:



If you have a “real” certificate, you won’t see this dialog. If you do see it, click Trust. Next, you will be asked to trust the applet with the dialog below. This is necessary so that Appellate CM/ECF can read PDF files from the Macintosh in docketing. Again, click Trust.



After that, the application should launch just as it would on a PC. The box with the blue “CM/ECF” label is the program itself, so if you close this it will log you out and discard any work you have in progress. This launching process has been tested using the Safari and the Firefox browsers. Other browsers may work, but these two are the most popular.

Known Differences for Mac Users

Automatic login as a PACER user when an attorney logs in as a filing user is not supported on the Mac.

The default Mac browser must be used to log in to CM/ECF. If a secondary browser is used, it will not “know” that the user has logged in when running browser-based portions of the system. To change the default browser, go to Safari > Preferences > General. Use the Default web browser to indicate the default web browser.