

United States District Courthouse



YOUNGSTOWN, OHIO

Electronic Courtroom User Guide

*System provided by DOAR Communications
Under contract from AOUSC*

DOAR Communications Inc.
Elevating the Art and Science of Persuasion™

Disclaimer

© Copyright 2000 DOAR Communications Inc. All rights reserved.

Nothing, in whole or in part, may be copied, reproduced, or presented in any form, hardcopy or electronic, for any purpose without the express written permission of DOAR.

Table of Contents

Introduction	1
Turning the Unit On	2
Crestron Control Panel	
Main Screen	3
VCR Controls	5
Cassette Controls	5
Camera Controls	6
Select Source Screen	7
Phone Conference	8
Audio Controls Screen	10
System Components	12
Document Camera	12
Touch Screen	15
VHS VCR	16
Audiocassette Player	17
Visual Image Printer (VIP)	28

Introduction

The Digital Evidence Presentation System consists of a Document Camera, which will allow evidence to be presented on the video monitors, and a Touch Screen to make drawings and annotations on-screen. The playback VCR can be used to view VHS and S-VHS tapes, and the second VCR is used to record the display of the monitors. Printing a hardcopy image of the video display is done with the touch of a button. The Video Image Printer (VIP) will capture the video contents and produce a printout.

Your product from DOAR Communications Inc. is warranted for one year against failure. Extended warranty protection is also available.

If you require assistance, please contact:

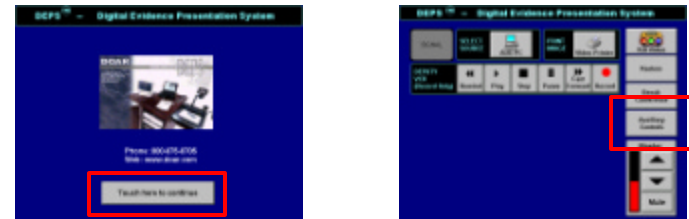
DOAR Communications Inc.
170 Earle Avenue
Lynbrook, NY 11563

Phone: (800) 875-8705
Fax: (516) 536-6868

<http://www.doar.com>
techsupport@doar.com

Turning the Unit On

The Crestron Control Panel will always be ON. If no activity is detected, it will enter a screen saver mode and the display will black out. When this happens, touch the screen anywhere to cancel the screen saver.



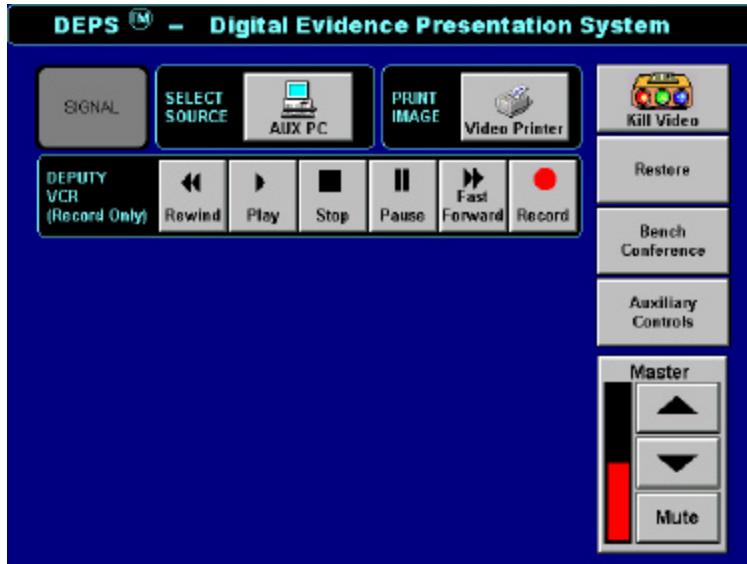
Initially, the **Opening Screen** will be shown. Press anywhere on the screen to open the **Main Screen**. Press the **AUXILIARY CONTROLS** button to open the **Auxiliary Controls Screen**.



Press the buttons labeled **AUDIO RACK** and **VIDEO RACK** to power up the respective system components. The **JURY** button controls the Jury monitors, and as such will turn them on or off.

Main Screen

This screen contains controls for the system's main features. All other screens are accessible from this screen.



SOURCE

This window displays the current active video source. Pressing the button will bring up the **Select Source Screen**, from where another source can be selected (see page 7).

PRINT IMAGE

This button can be used to print a hardcopy of the monitors to the Visual Image Printer (VIP).

DEPUTY VCR

These standard VCR buttons allow evidence shown on the monitors to be recorded.

KILL VIDEO

These buttons act as the Judge Override. Pressing the button will black out video to the monitors.

RESTORE

This will restore the video signal to the monitors.

BENCH CONFERENCE

This will enable or cancel a sidebar, and as such will turn on the sidebar microphone and generate noise through the Jury speakers.

AUXILIARY CONTROLS

This button opens the **Auxiliary Controls Screen** (see page 10).

MASTER VOLUME

This volume control will increase, decrease, or mute audio output to the courtroom. When muted, the INCREASE and DECREASE buttons will be inactive. To restore control, press MUTE again.

SIGNAL

Either the Judge or the Clerk can use this to get the other's attention. It will blink if pressed once, and pressing it again will cancel.

ADDITIONAL CONTROLS

Depending on the video source selected, extra windows will appear on the **Main Screen** to allow more control over those sources. Please refer to the following pages for more detail on additional controls.

VCR Controls

These additional VCR controls will be available if the LECTERN VCR is selected as the active video source.



These standard VCR buttons will allow playback of VHS and S-VHS videocassettes.

Cassette Controls

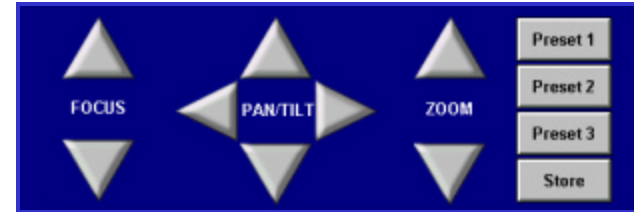
These additional audiocassette controls will be available if the CASSETTE is selected as the active video source.



These standard audio tape player buttons will allow playback of audiocassettes.

Camera Controls

These additional camera controls will be available if a CAMERA is selected as the active video source.



FOCUS

While the cameras will auto focus, the FOCUS buttons will allow fine-tuning of 3D objects placed in view. Under normal circumstances, these controls should not be needed.

PAN / TILT

These controls allow both camera angle to be adjusted and left and right movement to be set.

ZOOM

Zooming in and out can be used to bring an object in closer, or to broaden the view and allow more to be seen on the monitors.

To Set a Camera View:

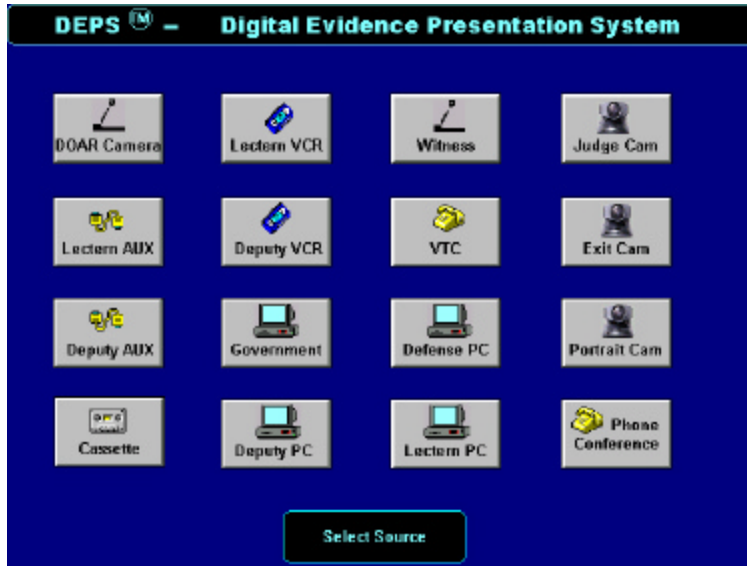
1. Set desired camera view angle and zoom.
2. Press STORE.
3. Press a PRESET button.

To View a Saved Camera View:

1. Press the corresponding PRESET button

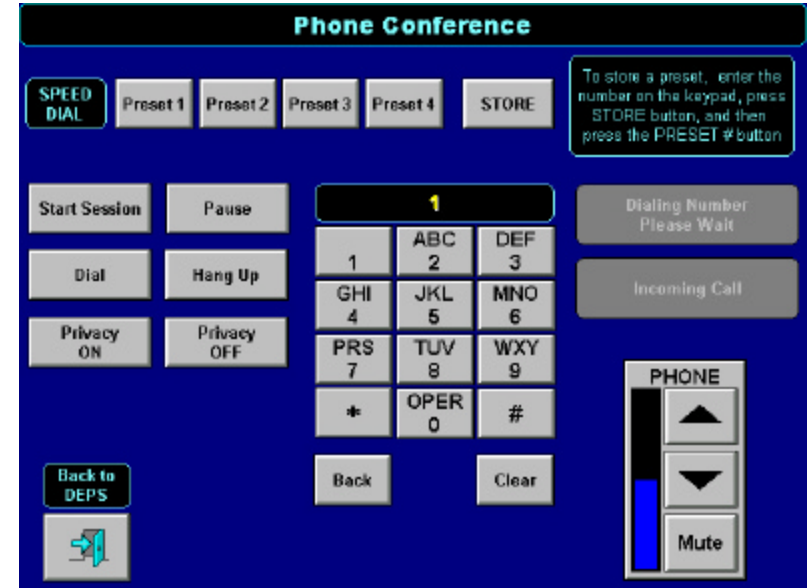
Select Source Screen

From this screen, a new audio/video source can be selected for presentation.



Phone Conference Screen

This screen will show when PHONE CONFERENCE is selected from the **Select Source Screen**. From here, a phone conference can be set up and executed.



DOAR CAMERA	The document will be selected as the active video source.
LECTERN VCR (PLAYBACK) DEPUTY VCR (RECORDING)	The respective VCR will be selected.
WITNESS	The Witness gooseneck camera will be selected.
JUDGE CAM EXIT CAM PORTRAIT CAM	The respective camera will be selected.
LECTERN AUX DEPUTY AUX	The respective AUX input will be selected.
VTC	Video Teleconferencing will be selected.
GOVERNMENT DEFENSE PC DEPUTY PC LECTERN PC	The respective PC input will be selected.
CASSETTE	The audiocassette player will be selected.
PHONE CONFERENCE	Phone Conferencing will be selected.

To Place a Call:

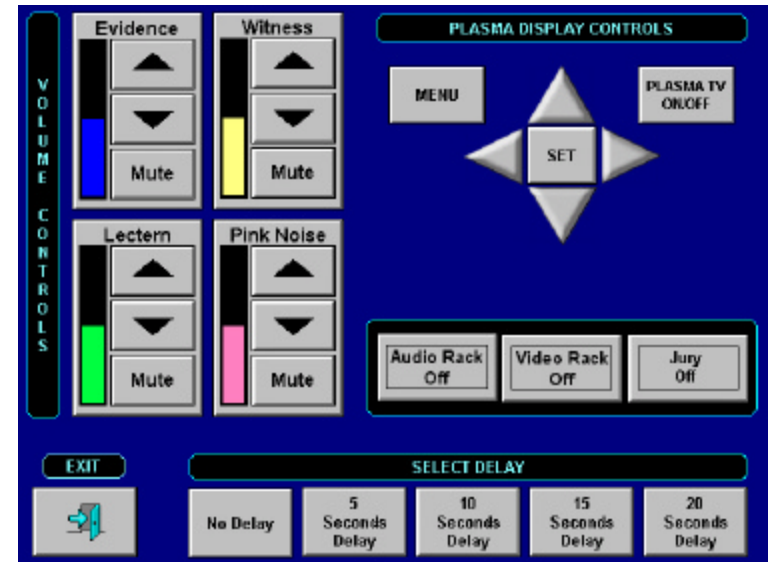
1. Press START SESSION.
2. Dial the number on the keypad as would be done on a telephone.
3. Press DIAL. The DIALING NUMBER, PLEASE WAIT indicator should light.
4. To end the call, press HANG UP.

To Answer a Call:

1. When the INCOMING CALL indicator lights, press START SESSION.
2. To end the call, press HANG UP.

Auxiliary Controls Screen

The volume and mute controls can be accessed from this screen.



VOLUME CONTROLS

The respective volume can be increased, decreased, or muted. When muted, the INCREASE and DECREASE buttons will be inactive. To restore control, press MUTE again. Pink noise is generated through the Jury speakers during a sidebar.

MENU (PLASMA DISPLAY CONTROLS)

This will bring up the Plasma Display menu on-screen. Use the arrows and the SET button to navigate through the menu.

PLASMA TV ON/OFF (PLASMA DISPLAY CONTROLS)

This buttons controls the power for the Plasma display.

To Store a Number as a Preset:

1. Press STORE.
2. Dial the number on the keypad as would be done on a telephone.
3. Press a PRESET button.

To Dial a Stored Preset Number:

1. Press the corresponding PRESET button instead of Step 2 of *To Place a Call*.

PRIVACY

PRIVACY ON acts as a mute. PRIVACY OFF cancels the function.

BACK

This button deletes a misdiald number

CLEAR

This button deletes the entire entered number.

VOLUME

The phone conference volume can be adjusted using these buttons.

Back to DEPS

This button returns to the **Main Screen**.

System Components

AUDIO RACK

This button will turn the audio rack on or off.

VIDEO RACK

This button will turn the video rack on or off.

JURY

This button will turn the Jury monitors on or off.

SELECT DELAY

This allows the Judge to preview material before it is sent to the monitors. It can only be set when KILL VIDEO has been pressed. When the RESTORE button is pressed, there will be a delay corresponding to the button selected. Selections range from no delay to 20 seconds.

Document Camera

The Document Camera is used to project documents, pictures, x-rays, transparencies, and other images onto the monitors.



Steps for presenting hard-copy materials:

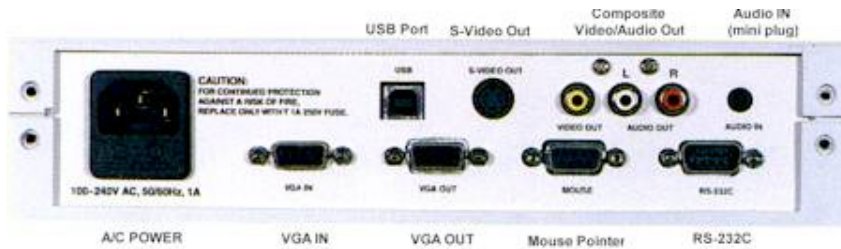
1. Turn on the power switch of the Document Camera.
2. Press the DOCUMENT CAMERA button on the **Select Source Screen** (see page 7).
3. Place an object on the stage.
4. Press the reflective (upper) lighting button.
5. Adjust the zoom button to obtain desired size.
6. Press the auto focus button to focus.

Steps for viewing X-Rays, negatives and transparencies:

1. Press the transmissive (lower) lighting button.
2. Press the Negative / Positive button, so the indicator shows the Negative mode.
3. Place an object on the stage.
4. Adjust the zoom and focus.
5. To turn off the lower light, press the transmissive (lower) lighting button again.

Steps for using as a conventional video camera:

1. Unscrew the close-up lens on the Document Camera.
2. Turn the camera head to a horizontal position.
3. Adjust the zoom and focus.



BACK PANEL OF THE DOCUMENT CAMERA

Control Functions

LIGHTING

- Use the upper lights for viewing documents, 3-D objects and pictures.
- Use the lower light for viewing x-rays, slides and negative film transparencies.
- It is not possible to simultaneously turn on the base and upper lighting units.

INPUT SELECTION

Images from two different auxiliary sources can be selected for display on the monitors. These selection buttons act as a switcher from one source such as a VCR and/or a Laser Disc Player to another.

NEGATIVE / POSITIVE SELECTION

- Use this function to view film negatives.

COLOR / B/W SELECTION

- Use this function to change between black and white and color modes.

ZOOM

- Use the [TELE] button to zoom in.
- Use the [WIDE] button to zoom out.

AUTO FOCUS

The Communicator features a one-step auto focus function. When the focusing is completed, the auto focus is released. The indication lamp flashes until the focusing is completed.

MANUAL FOCUS

Use the [N] (near) or [F] (far) for manual focusing. Use manual focus for 3-D objects, a moving object, or when the positions of the objects are far and near.

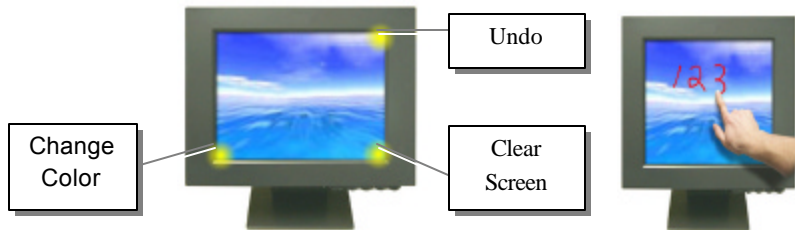


It is difficult to automatically focus on objects under the following conditions. Manual focus needs to be selected in order to clearly view objects in these conditions.

- Objects bearing little contrast.
- Objects with a fine repeated pattern such as lateral stripes, or a checkered pattern.
- Bright objects or ones reflecting strong light.
- The background of the object is bright.
- Picture itself is dark.
- Moving objects.

Touch Screen

The touch screen can be used to make on-screen drawings and annotations. It allows a witness to easily make annotations with the touch of a finger.



Annotations can be made by pressing lightly and dragging along like a pen.

The touch screen's corners activate special functions as described below.

UNDO



Tapping the **top right corner** of the screen will delete the annotations one at a time, beginning with the most recent.

CLEAR SCREEN



Tapping the **lower right corner** of the touch screen will remove all annotations.

CHANGE COLOR



Tapping the **lower left corner** of the screen will cycle through the available colors that can be used for annotations. The colored swatch that appears on the screen will be the active color, and will change as the corner is tapped.

VHS VCR

The VCRs in the Digital Evidence Presentation System play either VHS or S-VHS videotapes. The superior quality of the VCR reduces video noise and produces a high quality picture.



Your Digital Evidence Presentation System includes two VCRs to enable the playback of both S-VHS and VHS videocassette tapes. The Lectern VCR will be used for playback while the Deputy VCR has recording capabilities.



These standard VCR buttons can be used to playback videocassettes and control tape position. They are available on the **Main Screen** when LECTERN VCR is selected as the active video source.



These standard VCR buttons control the Deputy VCR, which has recording capabilities. They are present on the **Main Screen** regardless of what video source is selected.

AudioCassette Player

The audio cassette player in the Digital Evidence Presentation System will allow the playback of audiocassette tapes.



These standard buttons control the audiocassette player included in the Presentation System. They are available on the **Main Screen** when CASSETTE is selected as the active video source.

Video Image Printer (VIP)

The VIP produces hardcopy color prints of the monitor contents.



Steps to Print an image from the VIP:

1. Make sure the VIP is turned on, has paper loaded and a cartridge installed.
2. Press the PRINT IMAGE button on the **Main Screen** to produce an image hard copy.

Within approximately 60 seconds, a color printout will emerge from the VIP.



170 Earle Avenue • Lynbrook, NY 11563
phone: (800) 875-8705 • fax: (516) 536-6868
<http://www.doar.com> • info@doar.com