

Wagner-Peyser Employment Service (ES)

See our program website at http://www.doleta.gov/Programs/Wagner_Peyser.cfm

Performance Goals

GPRA Performance Measure	PY 2008 Target
Entered Employment	64%
Retained Employment	81%
Average Earnings	\$12,763

Analysis

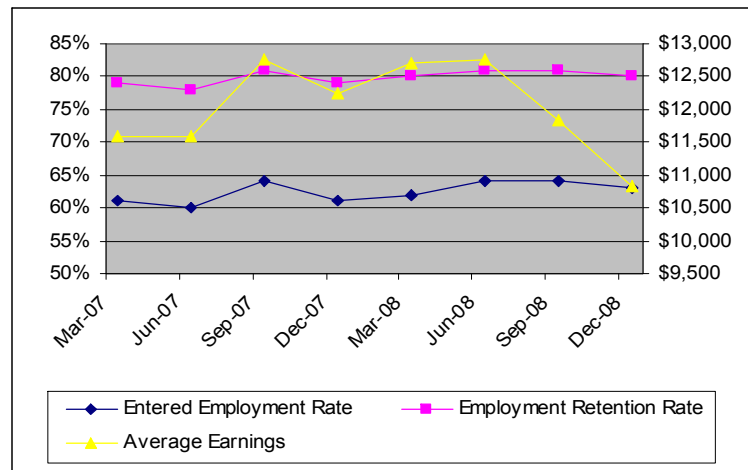
- The Entered Employment performance measure is two percentage points higher than one year ago.
- The Retention Rate is also one percentage point higher this year than last.
- Average Earnings decreased to \$10,818 from \$12,325 one year ago.

Program participation remains high with over 16,000,000 individuals receiving services over the past year.

Charting Program Performance

Performance Measure	Quarter Ending 12/31/07	Quarter Ending 12/31/08
Entered Employment	61%	63%
Retained Employment	79%	80%
Average Earnings	\$12,325	\$10,818

Performance Progress in the Past Eight Quarters



Program Description

Wagner-Peyser Act funded programs are an integral part of the One Stop delivery system. This delivery system provides universal access to an integrated array of services so that workers, job seekers and businesses can find the services they need at one easy-to-find location. The program focuses on providing a variety of employment related services including, but not limited to, job search assistance, job referral, placement assistance for job seekers, re-employment services for unemployment insurance claimants, and recruitment services to employers with job openings. Services are delivered in one of three modes, which include self-service, facilitated self-help services, and staff assisted service delivery approaches. Depending on the needs of the job seeker, referral to training may be available.

	<p>Other Program Highlights and Innovations</p> <p>As part of the American Recovery and Reinvestment Act of 2009, otherwise known as the economic stimulus package, the Wagner-Peyser/Employment Service program is receiving \$396 million in formula funds, to be disbursed by March 13, 2009. \$247.5 million of these stimulus funds will be devoted to reemployment services.</p>
--	---