

Petroleum Systems and Geologic Assessment of Oil and Gas in the San Joaquin Basin Province, California

Chapter 1

Executive Summary—Assessment of Undiscovered Oil and Gas Resources of the San Joaquin Basin Province of California, 2003

By USGS San Joaquin Basin Province Assessment Team¹

Introduction

In 2003, the U.S. Geological Survey (USGS) completed an assessment of the oil and gas resource potential of the San

Joaquin Basin Province of California (fig. 1.1). The assessment is based on the geologic elements of each Total Petroleum System defined in the province, including hydrocarbon source rocks (source-rock type and maturation and hydro-

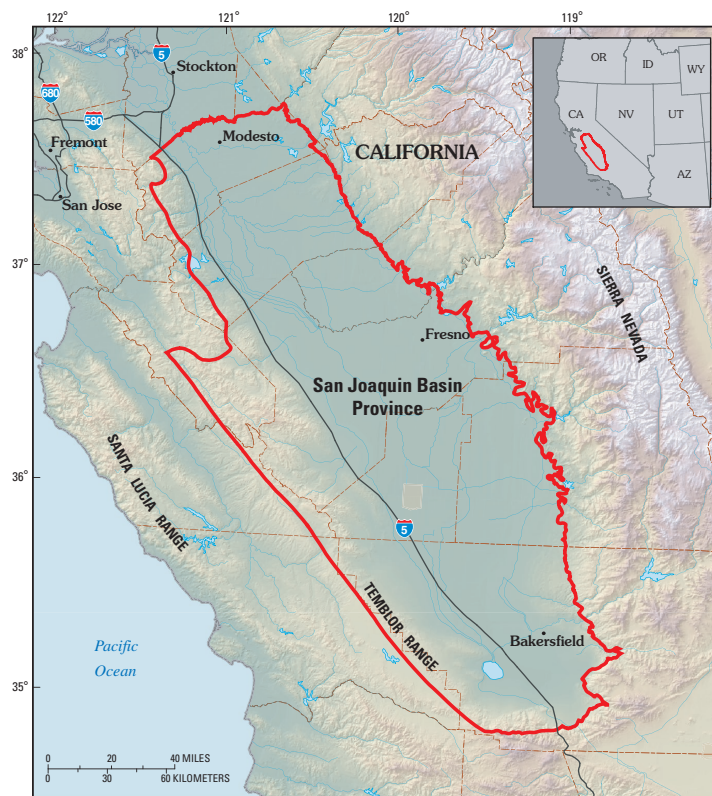


Figure 1.1. San Joaquin Basin Province (red outline) of California. County boundaries indicated by dashed brown lines.

¹Donald L. Gautier (Task Leader; gautier@usgs.gov), Allegra Hosford Scheirer, Marilyn E. Tennyson, Kenneth E. Peters, Leslie B. Magoon, Paul G. Lillis, Ronald R. Charpentier, Troy A. Cook, Christopher D. French, Timothy R. Klett, Richard M. Pollastro, and Christopher J. Schenk.

Table 1.1. San Joaquin Basin Province assessment results.

[MMBO, million barrels of oil; BCFG, billion cubic feet of gas; MMBNGL, million barrels of natural gas liquids. Results shown are fully risked estimates. For gas fields, all liquids are included under the natural gas liquids (NGL) category. F95 denotes a 95 percent chance of at least the amount tabulated. Other fractiles are defined similarly. Fractiles are additive, assuming perfect positive correlation. TPS, Total Petroleum System; AU, Assessment Unit. Gray shading indicates not applicable. Click on each assessment unit (AU) title to navigate to that chapter]

Total Petroleum Systems (TPS) and Assessment Units (AU)	Field type	Total undiscovered resources											
		Oil (MMBO)				Gas (BCFG)				NGL (MMBNGL)			
		F95	F50	F5	Mean	F95	F50	F5	Mean	F95	F50	F5	Mean
Winters-Domengine TPS													
Northern Nonassociated Gas AU	Oil	0.00	0.00	0.00	0.00	0.00	0.00	0.00	0.00	0.00	0.00	0.00	0.00
	Gas					33.17	98.76	199.64	105.78	0.00	0.00	0.00	0.00
Eocene-Miocene Composite TPS													
Deep Fractured Pre-Monterey AU	Oil	1.16	3.82	21.25	6.60	2.58	9.43	53.75	16.49	0.14	0.55	3.23	0.99
	Gas					164.51	847.52	2,738.31	1,063.22	8.34	44.81	150.92	57.30
Eocene Composite TPS													
Eocene West Side Fold Belt AU	Oil	10.84	41.45	96.52	46.03	25.53	100.69	254.07	115.31	1.14	4.70	12.85	5.54
	Gas					8.84	29.43	114.10	41.38	0.77	2.78	11.13	3.97
North and East of Eocene West Side Fold Belt AU	Oil	2.77	10.59	27.77	12.33	2.32	9.30	26.07	11.10	0.06	0.23	0.70	0.29
	Gas					0.00	0.00	0.00	0.00	0.00	0.00	0.00	0.00
Miocene TPS													
Southeast Stable Shelf AU	Oil	5.41	21.39	50.08	23.78	2.43	10.65	29.98	12.67	0.09	0.42	1.24	0.51
	Gas					0.00	0.00	0.00	0.00	0.00	0.00	0.00	0.00
Lower Bakersfield Arch AU	Oil	14.24	66.78	162.89	75.01	15.80	82.68	274.50	105.06	0.89	4.83	16.87	6.31
	Gas					17.29	58.34	169.58	71.25	0.80	2.86	8.76	3.57
Miocene West Side Fold Belt AU	Oil	19.69	79.79	188.31	88.79	20.59	88.10	239.71	103.56	1.16	5.16	14.93	6.23
	Gas												
South of White Wolf Fault AU	Oil	5.41	21.39	50.08	23.78	2.43	10.65	29.98	12.67	0.09	0.42	1.24	0.51
	Gas					0.00	0.00	0.00	0.00	0.00	0.00	0.00	0.00
Central Basin Monterey Diagenetic Traps AU	Oil	20.99	107.36	265.01	120.93	8.30	42.76	107.31	48.39	0.06	0.31	0.81	0.35
	Gas					0.00	0.00	0.00	0.00	0.00	0.00	0.00	0.00
Neogene Nonassociated Gas TPS													
Neogene Nonassociated Gas AU	Oil	0.00	0.00	0.00	0.00	0.00	0.00	0.00	0.00	0.00	0.00	0.00	0.00
	Gas					11.83	27.30	49.81	28.62	0.00	0.00	0.00	0.00
Total Conventional Resources		80.17	348.36	853.27	392.92	321.19	1,433.42	4,330.73	1,755.91	13.59	67.16	222.8	85.66

carbon generation and migration), reservoir rocks (sequence stratigraphy and petrophysical properties), and hydrocarbon traps (trap formation and timing). Using this geologic framework, the USGS defined five total petroleum systems and ten assessment units within these systems. Undiscovered oil and gas resources were quantitatively estimated for the ten assessment units (table 1.1). In addition, the potential was estimated for further growth of reserves in existing oil fields of the San Joaquin Basin.

Resource Summary

With respect to technically recoverable undiscovered conventional hydrocarbon resources in the San Joaquin Basin Province, the USGS estimated means of 1.8 trillion cubic feet of gas (TCFG), 393 million barrels of oil (MMBO), and 86 million barrels of total natural gas liquids (MMBNGL) for the five total petroleum systems (exclusive of reserve growth

in existing oil fields). Well over half of both the mean undiscovered gas resource (61 percent, 1 TCFG) and the mean natural gas liquids resource (67 percent, or 57 MMBNGL) is in the Deep Fractured Pre-Monterey Assessment Unit of the Eocene-Miocene Composite Total Petroleum System (table 1.1). Of the mean 393 MMB of total undiscovered oil, about 332 MMBO (84 percent) is estimated to be in five assessment units of the Miocene Total Petroleum System, and 46 MMBO (12 percent) is estimated for the Eocene West Side Fold Belt Assessment Unit of the Eocene Composite Total Petroleum System (table 1.1). Nearly 31 percent, or 121 MMB, of the total mean undiscovered oil resource in the San Joaquin Basin Province is estimated to be in the Central Basin Monterey Diagenetic Traps Assessment Unit.

Based on the analyses of recovery efficiencies and remaining oil-in-place, the USGS estimated that another 4,000 MMBO may be added to reserves in existing oil fields. A significant proportion of these reserves will come from improved recovery in diatomite reservoirs of the Monterey Formation.