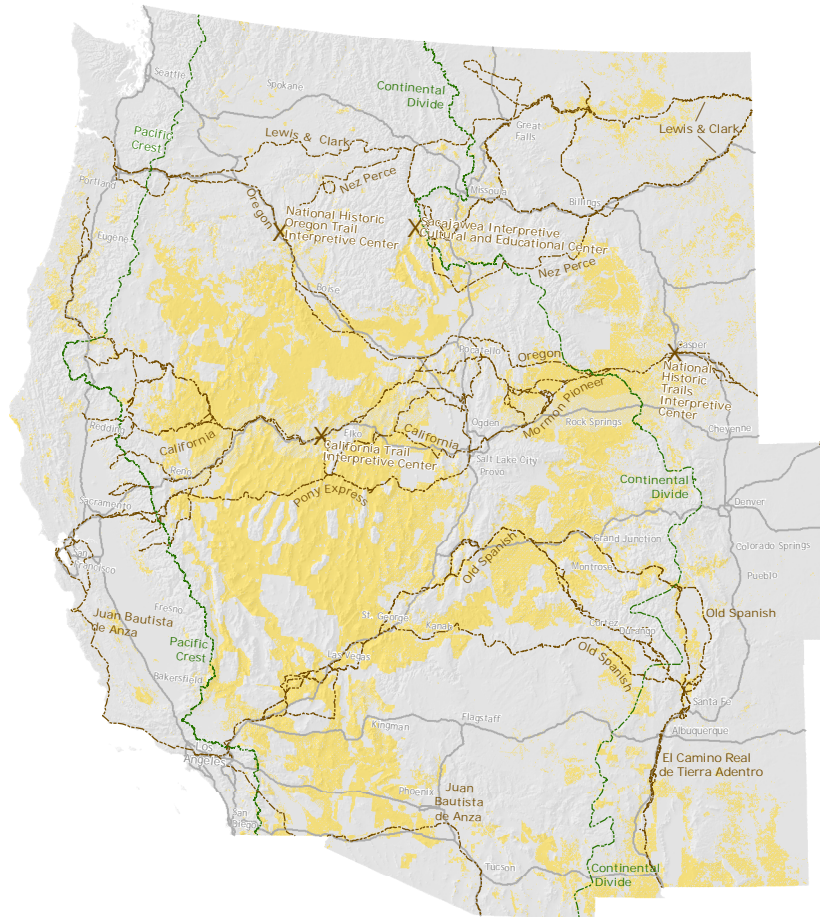
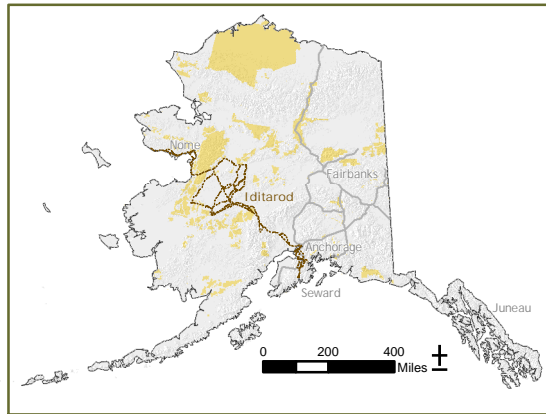
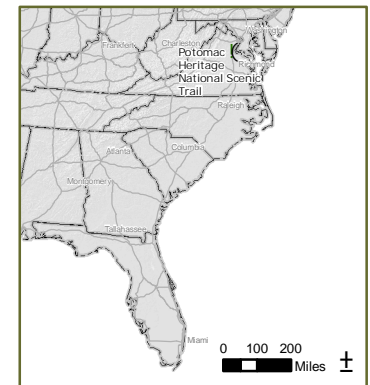






# National Landscape Conservation System


## *National Historic and Scenic Trails*



*Mission:  
To conserve,  
protect, and  
restore nationally  
significant land-  
scapes recognized  
for their cultural,  
ecological, and  
scientific values  
for the American  
public.*



 National Historic Trail  
 National Scenic Trail  
 BLM Administered Land  
 Interstate Highway

 0 50 100 200 300 400 Miles

\* Alaska and Eastern States are not to this scale.  
 \*\* The National Landscape Conservation System continues to grow as special areas are designated. Visit BLM's website periodically for updated information: [www.blm.gov](http://www.blm.gov)

05/08

## *Landscapes of the American Spirit*