

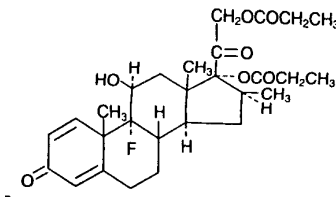
DIPROLENE® AF
brand of augmented
betamethasone dipropionate®
Cream 0.05%
(potency expressed as
betamethasone)

Vehicle augments the penetration of the steroid.

For Dermatologic Use Only - Not for Ophthalmic Use

DESCRIPTION DIPROLENE® AF Cream contains betamethasone dipropionate, USP, a synthetic adrenocorticosteroid, for dermatologic use in an emollient base. Betamethasone, an analog of prednisolone, has a high degree of corticosteroid activity and a slight degree of mineralocorticoid activity. Betamethasone dipropionate is the 17, 21-dipropionate ester of betamethasone.

Chemically, betamethasone dipropionate is 9-fluoro-11 β ,17,21-trihydroxy-16 β -methylpregna-1,4-diene-3,20-dione 17,21-dipropionate, with the empirical formula $C_{28}H_{37}FO_7$, a molecular weight of 504.6, and the following structural formula:



Betamethasone dipropionate is a white to creamy white, odorless crystalline powder, insoluble in water.

Each gram of DIPROLENE AF Cream 0.05% contains: 0.643 mg betamethasone dipropionate, USP (equivalent to 0.5 mg betamethasone) in an emollient cream base of purified water, USP; chlorocresol; propylene glycol, USP; white petrolatum, USP; white wax, NF; cyclomethicone; sorbitol solution, USP; glyceryl oleate/propylene glycol; cetareth-30; carbomer 940, NF; and sodium hydroxide R.

CLINICAL PHARMACOLOGY The corticosteroids are a class of compounds comprising steroid hormones secreted by the adrenal cortex and their synthetic analogs. In pharmacologic doses, corticosteroids are used primarily for their anti-inflammatory and/or immunosuppressive effects.

Topical corticosteroids, such as betamethasone dipropionate, are effective in the treatment of corticosteroid-responsive dermatoses primarily because of their anti-inflammatory, antipruritic, and vasoconstrictive actions. However, while the physiologic, pharmacologic, and clinical effects of the corticosteroids are well known, the exact mechanisms of their actions in each disease are uncertain. Betamethasone dipropionate, a corticosteroid, has been shown to have topical (dermatologic) and systemic pharmacologic and metabolic effects characteristic of this class of drugs.

Pharmacokinetics: The extent of percutaneous absorption of topical corticosteroids is determined by many factors including the vehicle, the integrity of the epidermal barrier, and the use of occlusive dressings. (See **DOSAGE AND ADMINISTRATION** section.)

Topical corticosteroids can be absorbed through normal intact skin. Inflammation and/or other disease processes in the skin may increase percutaneous absorption. Occlusive dressings substantially increase the percutaneous absorption of topical corticosteroids. (See **DOSAGE AND ADMINISTRATION** section.)

Once absorbed through the skin, topical corticosteroids enter pharmacokinetic pathways similar to systemically administered corticosteroids. Corticosteroids are bound to plasma proteins in varying degrees, are metabolized primarily in the liver and excreted by the kidneys. Some of the topical corticosteroids and their metabolites are also excreted into the bile.

DIPROLENE AF Cream was applied once daily at 7 grams per day for 1 week to diseased skin, in adult patients with psoriasis or atopic dermatitis, to study its effects on the hypothalamic-pituitary-adrenal (HPA) axis. The results suggested that the drug caused a slight lowering of adrenal corticosteroid secretion, although in no case did plasma cortisol levels go below the lower limit of the normal range.

Sixty-seven pediatric patients ages 1 to 12 years, with atopic dermatitis, were enrolled in an open-label, hypothalamic-pituitary-adrenal (HPA) axis safety study. DIPROLENE AF Cream was applied twice daily for 2 to 3 weeks over a mean body surface area of 58% (range 35% to 95%). In 19 of 60 (32%) evaluable patients, adrenal suppression was indicated by either a ≤ 5 mcg/dL pre-stimulation cortisol, or a cosyntropin post-stimulation cortisol ≤ 18 mcg/dL and/or an increase of < 7 mcg/dL from the baseline cortisol. Studies performed with DIPROLENE AF Cream indicate that it is in the high range of potency as compared with other topical corticosteroids.

INDICATIONS AND USAGE DIPROLENE AF Cream is a high-potency corticosteroid indicated for relief of the inflammatory and pruritic manifestations of corticosteroid-responsive dermatoses in patients 13 years and older.

CONTRAINDICATIONS DIPROLENE AF Cream is contraindicated in patients who are hypersensitive to betamethasone dipropionate, to other corticosteroids, or to any ingredient in this preparation.

PRECAUTIONS **General:** Systemic absorption of topical corticosteroids has produced reversible HPA axis suppression, manifestations of Cushing's syndrome, hyperglycemia, and glucosuria in some patients.

Conditions which augment systemic absorption include the application of the more potent corticosteroids, use over large surface areas, prolonged use, and the addition of occlusive dressings. Use of more than one corticosteroid-containing product at the same time may increase total systemic glucocorticoid exposure. (See **DOSAGE AND ADMINISTRATION** section.)

Therefore, patients receiving a large dose of a potent topical steroid applied to a large surface area should be evaluated periodically for evidence of HPA axis suppression by using the urinary free cortisol and ACTH stimulation tests. If HPA axis suppression is noted, an attempt should be made to withdraw the drug, to reduce the frequency of application, or to substitute a less potent steroid.

Recovery of HPA axis function is generally prompt and complete upon discontinuation of the drug. In an open-label pediatric study of 60 evaluable patients, of the 19 who showed evidence of suppression, 4 patients were tested 2 weeks after discontinuation of Diprolene AF Cream, and 3 of the 4 (75%) had complete recovery of HPA axis function. Infrequently, signs and symptoms of steroid withdrawal may occur, requiring supplemental systemic corticosteroids.

Children may absorb proportionally larger amounts of topical corticosteroids and thus be more susceptible to systemic toxicity. (See **PRECAUTIONS-Pediatric Use.**)

If irritation develops, topical corticosteroids should be discontinued and appropriate therapy instituted.

In the presence of dermatological infections, the use of an appropriate antifungal or antibacterial agent should be instituted. If a favorable response does not occur promptly, the corticosteroid should be discontinued until the infection has been adequately controlled.

Information for Patients: Patients using topical corticosteroids should receive the following information and instructions. This information is intended to aid in the safe and effective use of this medication. It is not a disclosure of all possible adverse or intended effects.

1. This medication is to be used as directed by the physician and should not be used longer than the prescribed time period. It is for external use only. Avoid contact with the eyes.
2. Patients should be advised not to use this medication for any disorder other than that for which it was prescribed.
3. The treated skin area should not be bandaged or otherwise covered or wrapped as to be occlusive. (See **DOSAGE AND ADMINISTRATION** section.)
4. Patients should report any signs of local adverse reactions.
5. Other corticosteroid-containing products should not be used with DIPROLENE AF Cream without first talking to your physician.

Laboratory Tests: The following tests may be helpful in evaluating HPA axis suppression:

- Urinary free cortisol test
- ACTH stimulation test

Carcinogenesis, Mutagenesis, and Impairment of Fertility: Long-term animal studies have not been performed to evaluate the carcinogenic potential of betamethasone dipropionate.

Betamethasone was negative in the bacterial mutagenicity assay (*Salmonella typhimurium* and *Escherichia coli*), and in the mammalian cell mutagenicity assay (CHO/HGPRT). It was positive in the *in-vitro* human lymphocyte chromosome aberration assay, and equivocal in the *in-vivo* mouse bone marrow micronucleus assay. This pattern of response is similar to that of dexamethasone and hydrocortisone.

Reproductive studies with betamethasone dipropionate carried out in rabbits at doses of 1.0 mg/kg by the intramuscular route and in mice up to 33 mg/kg by the intramuscular route indicated no impairment of fertility except for dose-related increases in fetal resorption rates in both species. These doses are approximately 5 and 38 fold the human dose based on a mg/m² comparison, respectively.

Pregnancy: Teratogenic effects: Pregnancy Category C: Corticosteroids are generally teratogenic in laboratory animals when administered systemically at relatively low dosage levels.

Betamethasone dipropionate has been shown to be teratogenic in rabbits when given by the intramuscular route at doses of 0.05 mg/kg. This dose is approximately 0.2 fold the maximum human dose based on a mg/m² comparison. The abnormalities observed included umbilical hernias, cephalocele and cleft palates.

Some corticosteroids have been shown to be teratogenic after dermal application in laboratory animals. There are no adequate and well-controlled studies in pregnant women on teratogenic effects from topically applied corticosteroids. Therefore, topical corticosteroids should be used during pregnancy only if the potential benefit justifies the potential risk to the fetus. Drugs of this class should not be used extensively on pregnant patients, in large amounts, or for prolonged periods of time.

Nursing Mothers: It is not known whether topical administration of corticosteroids can result in sufficient systemic absorption to produce detectable quantities in breast milk. Systemically administered corticosteroids are secreted into breast milk in quantities not likely to have a deleterious effect on the infant. Nevertheless, a decision should be made whether to discontinue nursing or to discontinue the drug, taking into account the importance of the drug to the mother.

Pediatric Use:

Use of DIPROLENE AF Cream in pediatric patients 12 years of age and younger is not recommended. (See **CLINICAL PHARMACOLOGY** and **ADVERSE REACTIONS** Sections.) In an open label study, 19 of 60 (32%) evaluable pediatric patients (aged 3 months – 12 years old) using DIPROLENE AF Cream for treatment of atopic dermatitis demonstrated HPA axis suppression. The proportion of patients with adrenal suppression in this study was progressively greater, the younger the age group. (See **CLINICAL PHARMACOLOGY-Pharmacokinetics**.)

Pediatric patients may demonstrate greater susceptibility to topical corticosteroid-induced HPA axis suppression and Cushing's syndrome than mature patients because of a larger skin surface area to body weight ratio. The study described above supports this premise, as adrenal suppression in 9-12 year olds, 6-8 year olds, 2-5 year olds, and 3 months – 1 year old was 17%, 32%, 38%, and 50%, respectively.

Hypothalamic-pituitary-adrenal (HPA) axis suppression, Cushing's syndrome, and intracranial hypertension have been reported in children receiving topical corticosteroids. Manifestations of adrenal suppression in children include linear growth retardation, delayed weight gain, low plasma cortisol levels, and absence of response to ACTH stimulation. Manifestations of intracranial hypertension include

bulging fontanelles, headaches, and bilateral papilledema. Chronic corticosteroid therapy may interfere with the growth and development of children.

ADVERSE REACTIONS The only local adverse reaction reported to be possibly or probably related to treatment with DIPROLENE AF Cream during adult, controlled clinical studies was stinging. It occurred in 1 patient, 0.4%, of the 242 patients or subjects involved in the studies.

Adverse reactions reported to be possibly or probably related to treatment with DIPROLENE AF Cream during a pediatric clinical study include signs of skin atrophy (telangiectasia, bruising, shininess). Skin atrophy occurred in 7 of 67 (10%) patients, involving all age groups from 3 months – 12 years of age.

The following local adverse reactions are reported infrequently when topical corticosteroids are used as recommended. These are listed in an approximate decreasing order of occurrence: burning, itching, irritation, dryness, folliculitis, hypertrichosis, acneiform eruptions, hypopigmentation, perioral dermatitis, allergic contact dermatitis, maceration of the skin, secondary infection, skin atrophy, striae, miliaria.

Systemic absorption of topical corticosteroids has produced reversible hypothalamic-pituitary-adrenal (HPA) axis suppression, manifestations of Cushing's syndrome, hyperglycemia, and glucosuria in some patients.

OVERDOSAGE Topically applied corticosteroids can be absorbed in sufficient amounts to produce systemic effects. (See **PRECAUTIONS**.)

DOSAGE AND ADMINISTRATION Apply a thin film of DIPROLENE AF Cream to the affected skin areas once or twice daily. Treatment with DIPROLENE AF Cream should be limited to 45 g per week.

DIPROLENE AF Cream is not to be used with occlusive dressings.

HOW SUPPLIED DIPROLENE AF Cream 0.05% is supplied in 15-g (NDC 0085-0517-01) and 50-g (NDC 0085-0517-04) tubes; boxes of one.

Store between 2° and 30° C (36° and 86° F).

Schering Corporation
Kenilworth, NJ 07033 USA

Rev. 5/01

XXXXXXXXXXT

Copyright © 1987, 1991, 1999, 2001 Schering Corporation.
All rights reserved.

Diprolene AF Cream
Label for Professional 1.8-g Sample Tube
23862301

SCHERING
Professional Sample—Not for Sale

Diprolene AF
Newly formulated
betamethasone dipropionate*

Cream, 0.05%
(Potency expressed
as betamethasone)

AF

*For corticosteroid information
see Corticosteroids section only.
Not for ophthalmic use.

Small black box

Rx only

Small text describing the product, including dosage and safety information, and manufacturer details.



SCHERING-PLOUGH RESEARCH INSTITUTE

Diprolene AF Cream
Carton for 18 Professional 1.8-g Sample Tubes
24010007



DIPROLENE Af
(augmented betamethasone dipropionate)
*Vehicle augments the penetration of the steroid.
CREAM 0.05%

Also available
in ointment,
lotion, and gel

Also available
in ointment,
lotion, and gel

DIPROLENE Af
(augmented betamethasone dipropionate)
*Vehicle augments the penetration of the steroid.
CREAM 0.05%

DIE 3715



SCHERING-PLOUGH RESEARCH INSTITUTE

Diprolene AF Cream

Carton for 18 Professional 1.8-g Sample Tubes

24010007



DIPROLENE[®] Af
(augmented betamethasone dipropionate)
*Vehicle augments the penetration of the steroid.
CREAM 0.05%

Also available
in ointment,
lotion, and gel

DFK0006/24010007 Rev. 3/00

Copyright © 1999, Schering Corporation,
Kenilworth, NJ 07033 USA. All rights reserved.



EXP

LOT

Each gram contains: 0.643 mg betamethasone dipropionate, USP (equivalent to 0.5 mg betamethasone) in an emollient cream base of purified water, USP; chlorocresol; propylene glycol, USP; white petrolatum, USP; white wax, NF; cyclomethicone; sorbitol solution, USP; glyceryl monoolate/propylene glycol; ceteareth-30; carbomer 940, NF; and sodium hydroxide, R.



SCHERING-PLOUGH RESEARCH INSTITUTE

Diprolene AF Cream

Label for 15-g Tube

22123416

Usual Dose:
See package insert.

Each gram contains:
0.643 mg betamethasone dipropionate, USP (equivalent to 0.5 mg betamethasone) in an emollient cream base of purified water, USP; chlorocresol, NF; propylene glycol, USP; white petrolatum, USP; white wax, NF; cyclomethicone; sorbitol solution, USP; glyceryl oleate/propylene glycol; ceteareth-30; carbomer 940, NF; and sodium hydroxide R.

Read accompanying directions carefully.

Store between 2° and 30°C (36° and 86°F).
LOT & EXP – See Crimp.

 Copyright © 1998, 1999, Schering Corporation, Kenilworth, NJ 07033 USA. All rights reserved.
22123416 Rev. 5/98 1538

SCHERING

NDC 0085-0517-01
15 g

Diprolene[®] AF
brand of augmented betamethasone dipropionate*
Cream, 0.05%
(Potency expressed as betamethasone)

*Vehicle augments the penetration of the steroid.

For dermatologic use only.
Not for ophthalmic use.

Rx only



Diprolene AF Cream

Carton for 15-g Tube

13940177

DIE 1031

SCHERING

NDC 0085-0517-01

15 g

***Diprolene*[®] AF**

brand of augmented
betamethasone
dipropionate*

Cream, 0.05%

(Potency expressed
as betamethasone)

* Vehicle augments the
penetration of the
steroid.

For dermatologic
use only.
AF
Not for
ophthalmic use.

Rx only



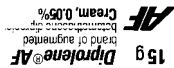
SCHERING-PLOUGH RESEARCH INSTITUTE

Diprolene AF Cream
Carton for 15-g Tube

13940177



11




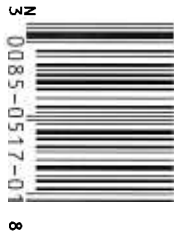
Usual Dose:
See package insert.

Each gram contains:
0.643 mg betamethasone dipropionate, USP (equivalent to 0.5 mg betamethasone) in an emollient cream base of purified water, USP; chlorocresol; propylene glycol, USP; white petrolatum, USP; white wax, NF; cyclomethicone; sorbitol solution, USP; glyceryl oleate/propylene glycol; ceteareth-30; carbomer 940, NF; and sodium hydroxide R.

Read accompanying directions carefully.

Store between 2° and 30° C (36° and 86° F).

 Copyright © 1987, 1998,
Schering Corporation,
Kenilworth, NJ 07033 USA.
All rights reserved.



13940177 Rev. 3/00



SCHERING-PLOUGH RESEARCH INSTITUTE

Diprolene AF Cream
Label for 45-g Tube

16961019

SCHERING


Usual Dose:
See package insert.

Each gram contains:
0.64 mg betamethasone
dipropionate, USP
(equivalent to 0.5 mg
betamethasone), in an
emollient cream base of
purified water, chlorocresol,
propylene glycol,
white petrolatum, white
wax, cyclomethicone,
sorbitol solution, glyceryl
monooleate, ceteareth-30,
carbomer 940 and
sodium hydroxide.

Read accompanying
directions carefully.

Store between
2° and 30°C
(36° and 86°F).

Control No. & Exp. Date—
See crimp.

 Copyright © 1988, 1991,
Schering Corporation,
Kenilworth, NJ 07033 USA.
All rights reserved.

16961019 Rev. 9/91 0865

NDC 0085-0517-02

45 g

Diprolene® AF

brand of augmented
betamethasone
dipropionate*

Cream, 0.05%

(Potency expressed
as betamethasone)

*Vehicle augments the
penetration of the steroid.

For dermatologic
use only

Not for
ophthalmic use

Caution: Federal law prohibits
dispensing without a prescription.



SCHERING-PLOUGH RESEARCH INSTITUTE

Diprolene AF Cream

Carton for 45-g Tube

17306600

15

SCHERING

NDC 0085-0517-02

45 g

***Diprolene*[®] AF**

brand of
augmented
betamethasone
dipropionate*

Cream, 0.05%

(Potency expressed
as betamethasone)

*Vehicle augments the
penetration of the steroid.

For dermatologic
use only

Not for
ophthalmic use

Caution: Federal law
prohibits dispensing
without a prescription.

DIE1012

45 g *Diprolene*[®] AF
brand of augmented
betamethasone dipropionate*
***AF* Cream, 0.05%**



Diprolene AF Cream
Carton for 45-g Tube



17306600



45 g Diprolene AF
brand of augmented
betamethasone dipropionate*
AF Cream, 0.05%

Usual Dose:
See package insert.

Each gram contains:
0.64 mg betamethasone
dipropionate, USP
(equivalent to 0.5 mg
betamethasone), in an
emollient cream base
of purified water,
chlorocresol, propylene
glycol, white petrolatum,
white wax,
cyclomethicone, sorbitol
solution, glyceryl
monooleate,
cetearth-30, carbomer
940 and sodium
hydroxide.

Read accompanying
directions carefully.

Store between
2° and 30°C
(36° and 86°F).

Copyright © 1987, 1992,
Schering Corporation,
Kenilworth, NJ 07033 USA.
All rights reserved.



17306600 Rev. 2/92



SCHERING-P

PLAQUE



Diprolene AF Cream

Label for 50-g Tube

23870304

Usual Dose:

See package insert.


Each gram contains:

0.643 mg betamethasone dipropionate, USP (equivalent to 0.5 mg betamethasone), in an emollient cream base of purified water, USP; chlorocresol; propylene glycol, USP; white petrolatum, USP; white wax, NF; cyclomethicone; sorbitol solution, USP; glyceryl oleate/propylene glycol; cetareth-30; carbomer 940, NF; and sodium hydroxide R.

Read accompanying directions carefully.

Store between 2° and 30°C (36° and 86°F).

LOT & EXP —
See Crimp.

 Copyright © 1986, 1998,
Schering Corporation,
Kenilworth, NJ 07033
USA. All rights reserved.

23870304 Rev. 2/00 1680

SCHERING

NDC 0085-0517-04

50 g

***Diprolene*[®] AF**

brand of augmented
betamethasone
dipropionate*

Cream, 0.05%

(Potency expressed
as betamethasone)

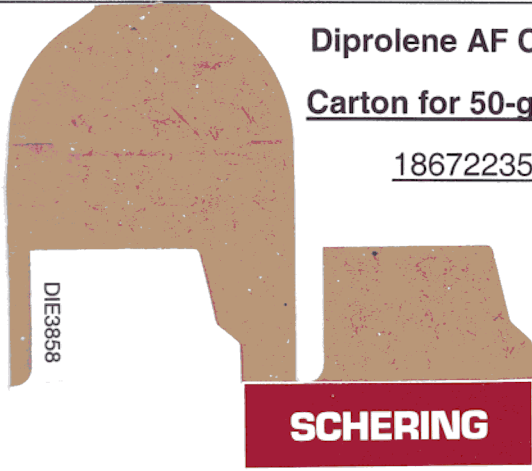
*Vehicle augments the
penetration of the steroid.


For dermatologic
use only.
Not for
ophthalmic use.

Rx only



SCHERING-PLOUGH RESEARCH INSTITUTE



Diprolene AF Cream

Carton for 50-g Tube

18672235

NDC 0085-0517-04

50 g

Diprolene[®] AF

brand of
augmented
betamethasone
dipropionate*

Cream 0.05%

(Potency expressed
as betamethasone)

*Vehicle augments the
penetration of the
steroid.

**For dermatologic
use only.**

**Not for
ophthalmic use.**

Rx only



50 g *Diprolene[®] AF*
brand of augmented
betamethasone dipropionate*
***AF* Cream, 0.05%**



ARCH INSTITUTE



Diprolene AF Cream
Carton for 50-g Tube



18672235

50 g Diprolene AF
brand of augmented
betamethasone dipropionate*
AF Cream, 0.05%

Usual Dosage:

See package insert.

Each gram contains:

0.643 mg betamethasone dipropionate, USP (equivalent to 0.5 mg betamethasone) in an emollient cream base of purified water, USP; chlorocresol; propylene glycol, USP; white petrolatum, USP; white wax, NF; cyclomethicone; sorbitol solution, USP; glyceryl oleate/propylene glycol; cetareth-30; carbomer 940, NF; and sodium hydroxide R.

Read accompanying directions carefully.

Store between 2° and 30°C (36° and 86°F).

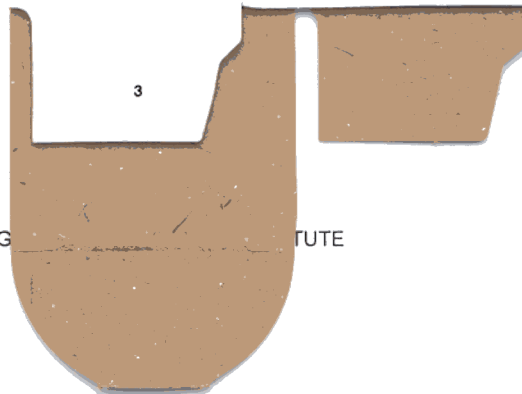
 Copyright © 1996,
Schering Corporation,
Kenilworth, NJ 07033 USA.
All rights reserved.



N 0085-0517-04 9

18672235

Rev. 3/00



SCHERING

TUTE

**This is a representation of an electronic record that was signed electronically and
this page is the manifestation of the electronic signature.**

/s/

Jonathan Wilkin
10/3/01 10:09:37 AM