

TABLE OF CONTENTS

	Page
<u>KEY DATA</u>	2
<u>ECONOMIC ASSUMPTIONS</u>	3
<u>CHART -- TUR-IUR COMPARISON</u>	4
<u>SUMMARY OF UI ESTIMATES</u>	5
<u>COMPARISON OF PROJECTIONS</u>	6
<u>CHART -- COMPARISON OF OUTLAY ESTIMATES</u>	7
<u>HISTORICAL UI PROGRAM DATA</u>	8
<u>CHART -- HISTORICAL AND PROJECTED OUTLAYS</u>	9
<u>STATUS OF STATE ACCOUNTS</u>	10
<u>CHART -- OUTLAYS VS. REVENUES</u>	11
<u>STATUS OF ESAA</u>	12
<u>STATUS OF EUCA</u>	13
<u>STATUS OF FUA</u>	14
<u>DEFINITIONS</u>	15

KEY DATA -- FY 2009/FY 2010

Total Unemployment Rate (Civilian)	7.8	/	7.9 %
Insured Unemployment Rate	3.7	/	3.7 %

OUTGO

♦ Benefits Paid (All Programs)	\$	102.9	/	88.6 billion
Number of Beneficiaries (All Programs)		12.0	/	11.4 million
Average Duration of Benefits (All Programs)		27.4	/	24.7 weeks
Average Weekly Benefit Amount (All Programs)	\$	311.70	/	313.10
♦ Administrative Costs	\$	5.8	/	6.3 billion

INCOME

♦ Payroll Taxes				
FUTA	\$	7.2	/	6.0 billion
State	\$	36.7	/	44.9 billion
♦ Interest on State Loans	\$	0.00	/	0.00 billion*
Interest Rate (Calendar Year)		4.6375%	/	4.44%

TRUST FUND BALANCES (END OF FISCAL YEAR)

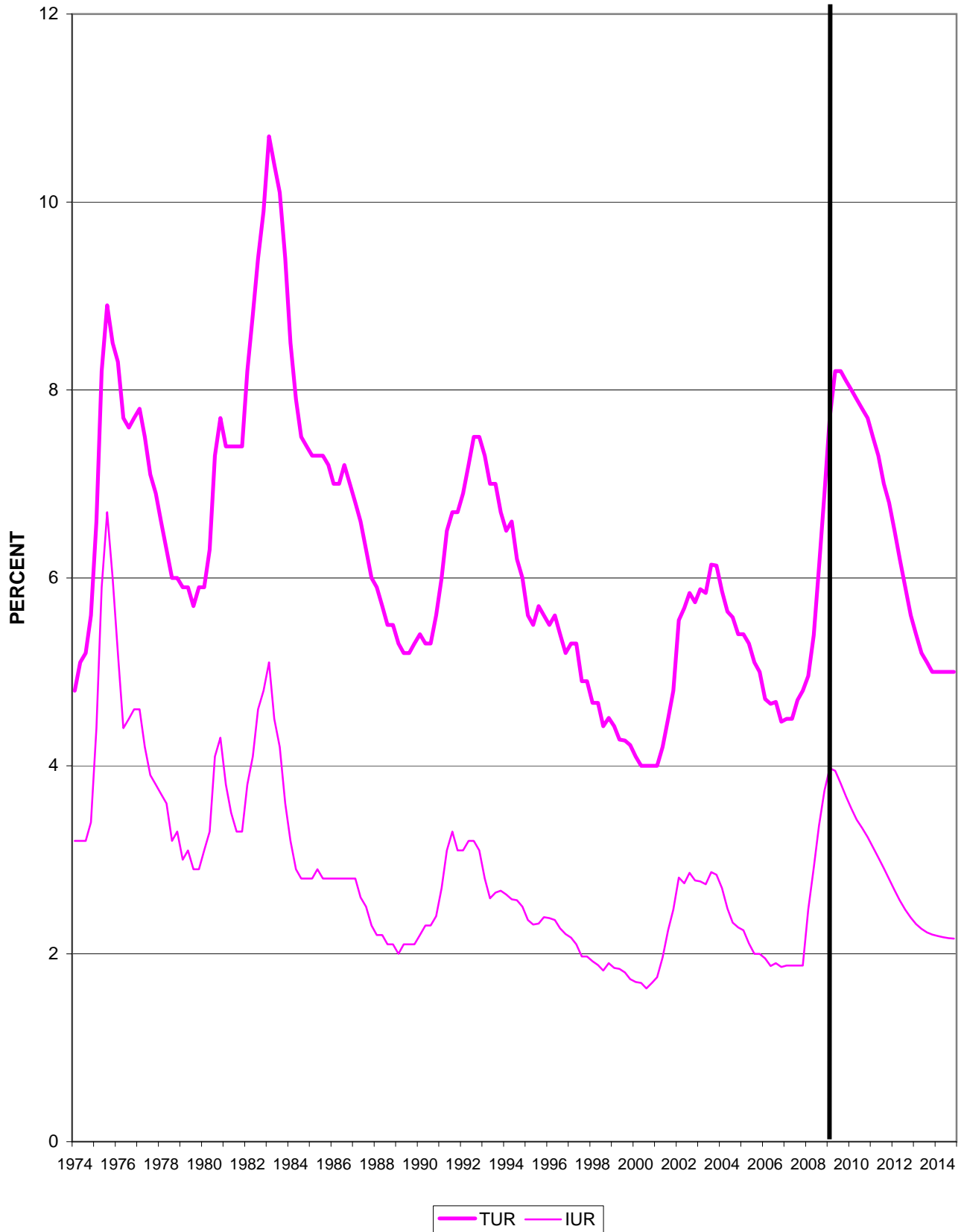
♦ State Trust Fund Accounts (Excluding Loans)	\$	9.3	/	-12.0 billion
♦ Employment Security Administration Account (ESAA)	\$	1.8	/	0.6 billion
♦ Extended Benefit Account (EUCA)	\$	1.1	/	0.0 billion
♦ Loan Account (FUA) (Excluding General Fund Advances)	\$	6.8	/	-8.5 billion

* The ARRA waived interest payments and accruals through 12/31/2010.

**ECONOMIC ASSUMPTIONS
FY 2010 President's Budget**

Fiscal Year	Civilian TUR (%)	IUR (%)	Change in GDP Price Index (%)	Real GDP Growth (%)
2008	5.3	2.2	2.4	1.9
2009	7.8	3.7	1.5	-1.4
2010	7.9	3.7	1.0	2.4
2011	7.4	3.2	1.4	3.8
2012	6.3	2.8	1.7	4.5
2013	5.3	2.4	1.8	4.4
2014	5.0	2.2	1.8	3.2

U.S. UNEMPLOYMENT RATES



FY 2010 President's Budget
Rates are Seasonally Adjusted

Source: USDOL/BLS and USDOL/ETA/OWS
Prepared by: USDOL/ETA/OWS
Division of Fiscal and Actuarial Services

UI PROGRAM ESTIMATES
FY 2010 President's Budget
(Billions of Dollars)

FISCAL YEAR	2009	2010	2011	2012	2013	2014
Civilian TUR (%)	7.8	7.9	7.4	6.3	5.3	5.0
IUR(%)	3.7	3.7	3.2	2.8	2.4	2.2
Coverage (millions)	131.0	131.7	133.5	135.9	138.3	139.7
AWBA (Regular)	295.46	297.82	302.20	311.16	322.31	334.56
Benefit Outlays (All Programs)	102.88	88.31	62.65	55.11	49.43	48.02
<u>STATE UI</u>						
Beneficiaries (millions)	11.9	11.3	10.6	9.7	8.8	8.5
Regular Benefit Exhaustions (millions)	5.6	5.6	5.0	4.1	3.3	3.0
Regular Benefits Paid	66.91	64.99	58.47	52.78	47.43	46.31
EB (State Share)	0.04	1.70	0.64	0.02	0.00	0.00
State Collections	36.72	44.90	50.58	55.57	56.78	55.88
Interest Earned	1.23	0.69	0.49	0.43	0.53	0.80
<u>FEDERAL ACCOUNTS</u>						
FUTA Collections (1) (2)	7.22	5.99	5.62	5.81	6.01	6.17
-To EUCA	1.44	1.20	1.12	1.16	1.20	1.23
-To ESAA	5.77	4.79	4.49	4.65	4.81	4.94
Outlays						
-Federal EB Share	1.24	3.10	0.64	0.02	0.00	0.00
-EUC08	28.27	12.66	0.00	0.00	0.00	0.00
-Administrative Costs	5.82	6.33	4.46	4.40	4.40	4.39
FECA Outlays	1.15	1.18	1.26	1.00	0.90	0.87
-UCFE	0.43	0.50	0.62	0.41	0.34	0.33
-UCX	0.72	0.68	0.64	0.59	0.56	0.54
Trade Benefits	0.22	1.05	1.62	1.31	1.11	0.84
Federal Additional Compensation	5.07	3.62	0.00	0.00	0.00	0.00

(1) Excluding Reduced Credits

(2) Under current law, the effective FUTA tax rate falls from 0.8% to 0.6% after CY 2009.

Note: Administrative costs for years beyond 2010 are based on growth factors applied to all programs in the Federal budget.

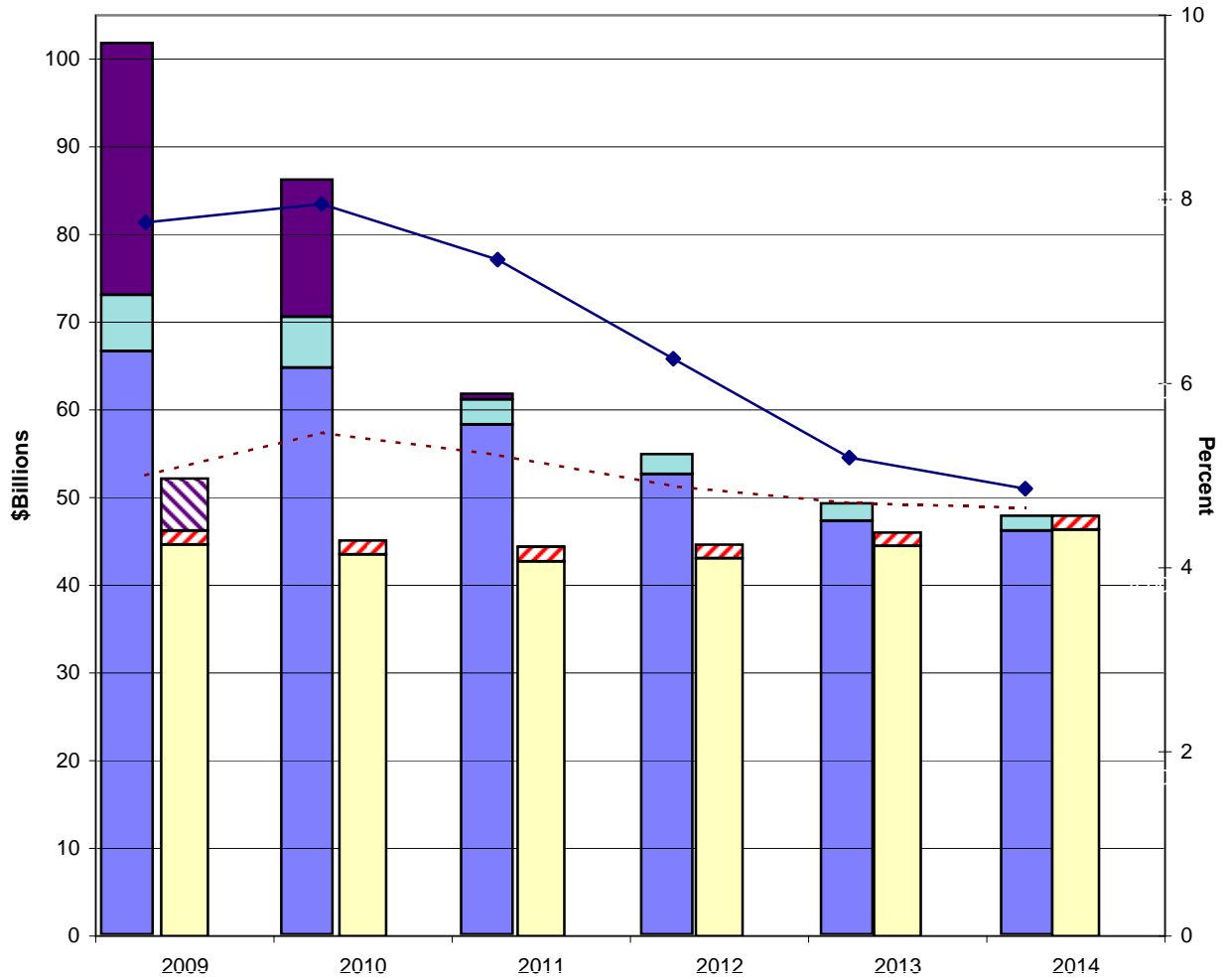
COMPARISON OF PROJECTIONS
(Billions of Dollars)

	FY 2010 President's Budget		FY 2009 Midsession Review	
	FY 2009	FY 2010	FY 2009	FY 2010
Civilian TUR (%)	7.8	7.9	5.6	5.4
IUR (%)	3.7	3.7	2.4	2.3
AWBA	295.46	297.82	300.23	310.45
Benefits				
-Regular	66.91	64.99	44.65	43.53
-EB	1.27	4.80	0.17	0.02
Revenues				
-State	36.72	44.90	38.07	41.42
-FUTA (1)	7.22	5.99	6.17	5.78
State Loans				
-Loans	15.55	27.36	3.39	5.80
-Repayments	5.20	11.83	2.44	5.13
-Interest	0.00	0.00	0.05	0.10
-Balance	10.71	26.24	1.18	1.75
Balances				
-State Accounts (2)	9.33	-12.01	32.68	31.77
-EUCA	1.09	0.01	15.73	19.03
-FUA	6.85	5.37	14.56	14.72

(1) Excluding reduced credits

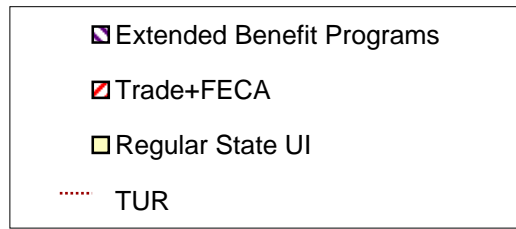
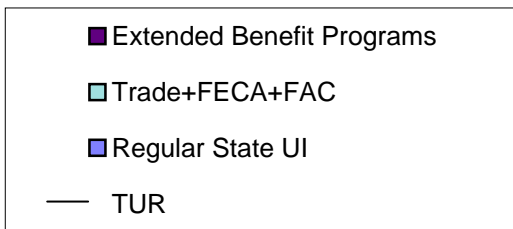
(2) Net balances excluding loans

UI Program Estimates



FY 2010 President's Budget

FY 2009 Midsession Review



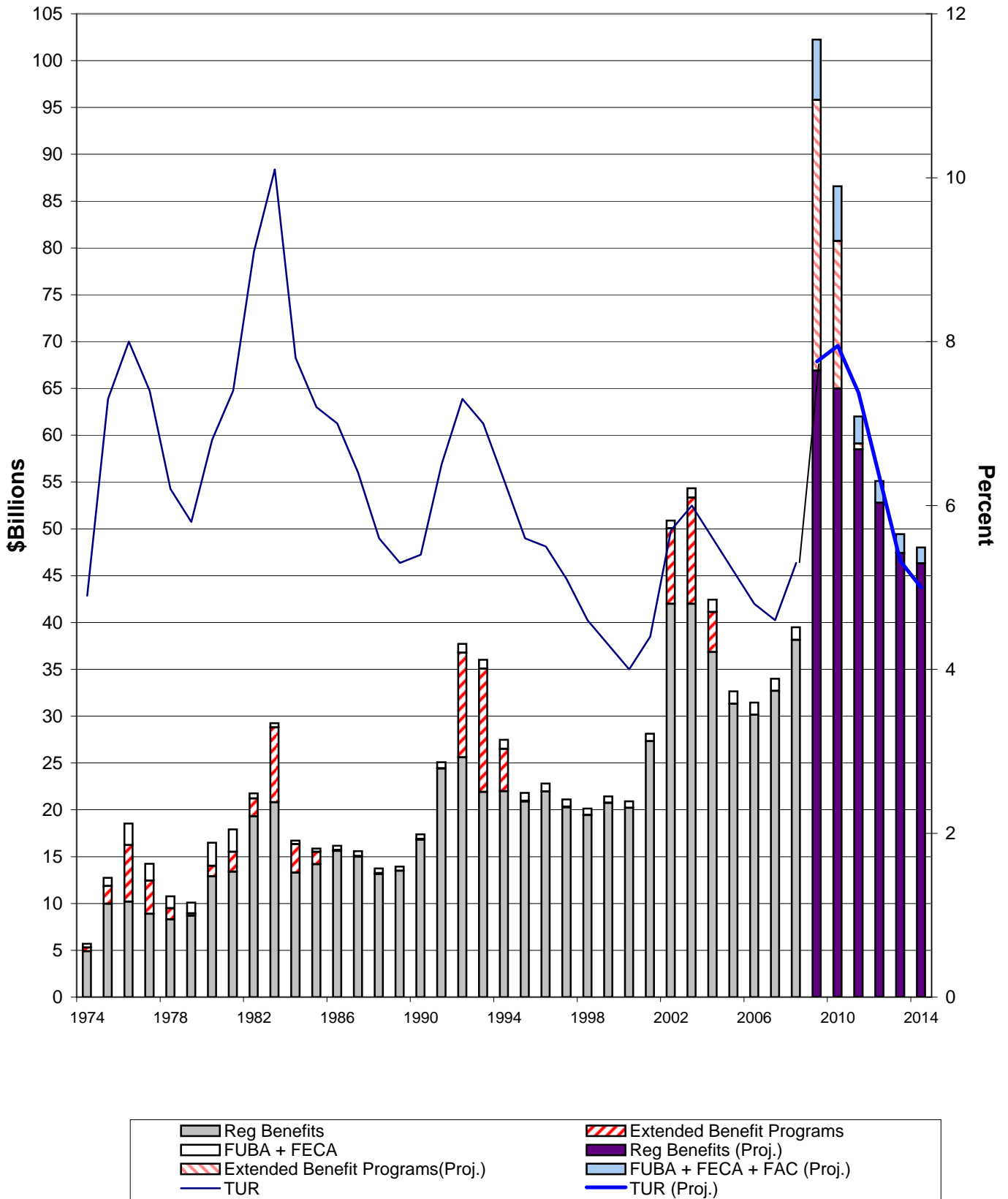
HISTORICAL UI PROGRAM STATISTICS (Billions of Dollars)

FISCAL YEAR	2002	2003	2004	2005	2006	2007	2008
Civilian TUR (%)	5.7	6.0	5.6	5.2	4.8	4.6	5.3
IUR (%)	2.8	2.8	2.5	2.1	2.0	1.9	2.2
Coverage (millions)	126.6	126.1	127.0	129.4	131.3	133.4	133.7
AWBA (Regular)	247.53	253.59	253.61	257.9	265.5	276.7	285.28
Benefit Outlays (All Programs)	50.88	54.33	42.45	32.61	31.46	32.70	43.05
<u>STATE UI</u>							
Beneficiaries (millions)	10.4	10.2	8.7	8.0	7.4	7.5	8.8
Regular Benefit Exhaustions (millions)	4.2	4.4	3.9	3.0	2.7	2.6	3.1
Regular Benefits Paid	41.99	41.99	36.85	31.22	30.15	31.41	38.14
EB (State Share)	0.08	0.16	0.08	0.00	0.01	0.01	(1)
State Collections	20.91	26.70	32.73	35.08	35.94	33.71	32.22
<u>FEDERAL ACCOUNTS</u>							
FUTA Collections (2)	6.61	6.52	6.59	6.69	7.10	7.29	7.22
-To EUCA	0.97	1.27	1.19	1.51	1.47	1.32	1.45
-To ESAA	5.64	5.25	5.40	5.18	5.63	5.96	5.76
Outlays							
-Federal EB Share	0.08	0.16	0.08	0.00	0.01	0.01	(1)
-Administrative Costs	3.70	4.10	3.88	3.82	3.85	3.68	3.92
-TEUC	7.92	11.03	4.12	0.00	0.01	0.00	0.00
-EUC08	0.00	0.00	0.00	0.00	0.00	0.00	3.55
FUBA/FECA Outlays	0.81	0.99	1.32	1.38	1.31	1.30	1.24
-UCFE-UCX	0.52	0.63	0.79	0.79	0.80	0.74	0.72
-Trade	0.29	0.36	0.53	0.59	0.51	0.57	0.52

(1) Less Than \$5 million

(2) Excluding reduced credits.

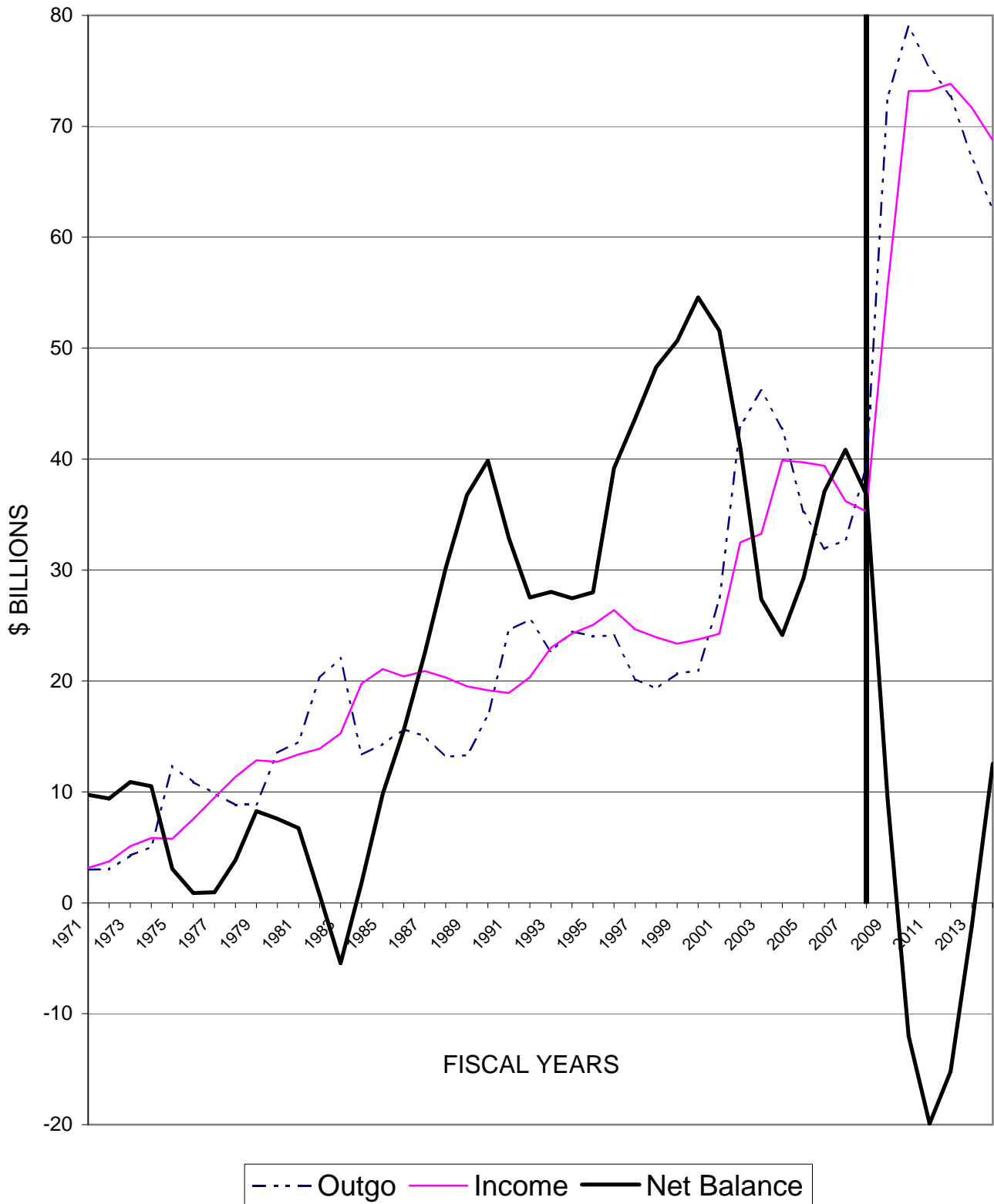
UI PROGRAM OUTLAYS



STATUS OF STATE ACCOUNTS
FY 2010 President's Budget
(Billions of Dollars)

FISCAL YEAR	2008	2009	2010	2011	2012	2013	2014
<u>Income</u>	--	55.56	73.17	73.22	73.84	71.69	68.74
Collections	--	36.72	44.90	50.58	55.57	56.78	55.88
Interest Earnings	--	1.23	0.69	0.49	0.43	0.53	0.80
Loans	--	15.55	27.36	21.92	17.84	14.33	12.03
Excess Reduced Credits	--	0.00	0.00	0.00	0.00	0.06	0.03
Reed Act/UI Modernization Transfers		2.05	0.23	0.23	0.00	0.00	0.00
<u>Outgo</u>	--	72.67	78.98	75.29	72.74	67.18	62.54
Benefits	--	66.94	66.69	59.11	52.79	47.43	46.31
Loan Repayments	--	5.20	11.75	15.81	19.65	19.56	16.02
Administration	--	0.53	0.55	0.36	0.29	0.20	0.20
Balance							
(End of Year)	37.16	20.04	14.23	12.17	13.27	17.78	23.98
Outstanding Loans	0.36	10.71	26.24	32.09	28.48	19.89	11.45
Net Balance							
(Excluding Loans)	36.80	9.33	-12.01	-19.92	-15.21	-2.11	12.53

STATE TRUST FUND STATUS



FY 2010 President's Budget

Note: Income and outgo include loans and repayments. Balances are net of loans.

Source: USDOL\ETA\OWS
Division of Fiscal and Actuarial Services

STATUS OF ADMINISTRATION ACCOUNT (ESAA)
FY 2010 President's Budget
(Billions of Dollars)

FISCAL YEAR	2008	2009	2010	2011	2012	2013	2014
<u>Income</u>	--	6.08	5.14	4.54	4.69	4.88	5.04
FUTA Income (1)	--	5.77	4.79	4.49	4.65	4.81	4.94
General Revenues	--	0.22	0.28	0.02	0.00	0.00	0.00
Interest Earnings	--	0.09	0.08	0.03	0.04	0.07	0.10
Repayment from FUA		0.00	0.00	0.00	0.00	0.00	1.30
<u>Outgo</u>	--	5.82	6.33	4.46	4.40	4.40	4.39
State Administration	--	5.07	4.77	4.20	4.13	4.13	4.11
-UI	--	3.91	3.55	3.17	3.15	3.14	3.13
-ES,BLS,VETS	--	1.16	1.23	1.03	0.98	0.99	0.98
Federal Administration	--	0.25	0.26	0.26	0.27	0.27	0.28
UI Modernization Transfers		0.50	0.00	0.00	0.00	0.00	0.00
Advances to FUA		0.00	1.30	0.00	0.00	0.00	0.00
Preliminary Balance (End of Year)	3.46	1.78	0.59	0.67	0.96	1.44	3.39
FUA/EUCA Overflow	0.00	0.00	0.00	0.00	0.00	0.00	0.00
Balance	3.46	1.78	0.59	0.67	0.96	1.44	3.39
-Ceiling (2)	1.52	2.07	1.75	1.68	1.69	1.68	1.68
-Excess	1.94	0.00	0.00	0.00	0.00	0.00	1.72
To EUCA	1.94	0.00	0.00	0.00	0.00	0.00	1.72
To FUA	0.00	0.00	0.00	0.00	0.00	0.00	0.00
To States (Reed Act)	0.00	0.00	0.00	0.00	0.00	0.00	0.00

(1) Under current law, the effective FUTA tax rate falls from 0.8% to 0.6% after CY 2009.

(2) Statutory ceiling is 40% of current year's appropriation

Note: Administrative costs for years beyond 2010 are based on growth factors applied to all programs in the Federal budget.

STATUS OF EXTENDED BENEFIT ACCOUNT (EUCA)
FY 2010 President's Budget
(Billions of Dollars)

FISCAL YEAR	2008	2009	2010	2011	2012	2013	2014
<u>Income</u>	--	16.43	14.68	1.13	1.20	1.28	4.82
FUTA Income (1)	--	1.44	1.20	1.12	1.16	1.20	1.23
Interest Earnings	--	0.55	0.02	0.01	0.03	0.08	0.19
General Revenues for EUC08	--	12.49	12.66	0.00	0.00	0.00	0.00
Overflow from ESAA	--	1.94	0.00	0.00	0.00	0.00	0.00
Repayments from FUA		0.00	0.80	0.00	0.00	0.00	3.40
<u>Outgo</u>	--	33.21	15.76	0.64	0.02	0.50	0.00
EB Outlays -- Fed Share	--	1.24	3.10	0.64	0.02	0.00	0.00
EUC08	--	28.27	12.66	0.00	0.00	0.00	0.00
Advances to FUA		3.70	0.00	0.00	0.00	0.50	0.00
Balance							
(End of Year)	17.87	1.09	0.01	0.50	1.68	2.46	7.28
-Ceiling (2)	23.85	24.36	24.48	25.46	26.94	28.64	30.31
-Excess	0.00	0.00	0.00	0.00	0.00	0.00	0.00

(1) Under current law, the effective FUTA tax rate falls from 0.8% to 0.6% after CY 2009.

(2) Statutory ceiling is 40% of current year's appropriation

STATUS OF LOAN ACCOUNT (FUA)
FY 2010 President's Budget
(Billions of Dollars)

FISCAL YEAR	2008	2009	2010	2011	2012	2013	2014
<u>Income</u>	--	9.26	29.10	31.11	22.82	24.38	21.26
Interest Earnings	--	0.36	0.17	0.23	0.12	0.03	0.15
State Repayments (1)	--	5.20	11.83	16.07	21.45	22.92	20.48
State Interest Payments	--	0.00	0.00	1.01	1.25	0.93	0.63
Overflow from ESAA	--	0.00	0.00	0.00	0.00	0.00	0.00
Advances from EUCA/ESAA	--	3.70	1.30	0.00	0.00	0.50	0.00
General Fund Advances	--	0.00	15.80	13.80	0.00	0.00	0.00
<u>Outgo</u>	--	17.11	30.58	31.33	27.93	24.33	16.73
State Loans	--	15.55	27.36	21.92	17.84	14.33	12.03
Repayment to EUCA/ESAA	--	0.00	0.80	0.00	0.00	0.00	4.70
Repayment to General Fund	--	0.00	1.90	8.50	9.50	9.70	0.00
Interest on General Fund Advances		0.00	0.30	0.68	0.59	0.30	0.00
UI Modernization Incentive Payments		1.55	0.23	0.23	0.00	0.00	0.00
Balance							
(End of Year)	14.69	6.85	5.37	5.15	0.04	0.09	4.62
Outstanding General Fund Advances	0.00	0.00	13.90	19.20	9.70	0.00	0.00
Net Balance	14.69	6.85	-8.53	-14.05	-9.66	0.09	4.62
-Ceiling (2)	23.85	24.36	24.48	25.46	26.94	28.64	30.31
-Excess to ESAA	0.00	0.00	0.00	0.00	0.00	0.00	0.00

(1) Includes reduced FUTA credits

(2) Statutory ceiling is 40% of current year's appropriation

DEFINITIONS

EB	Extended Benefits -- Permanent triggered program
ES	Employment Service
ESAA	Employment Security Administration Account Provides grants to states for UI and ES
EUCA	Extended Unemployment Compensation Account Pays Federal share of EB and TEUC
FECA	Federal Employees Compensation Account Pays benefits to UCFE and UCX claimants
FUA	Federal Unemployment Account Makes repayable advances to state trust funds
FUBA	Federal Unemployment Benefits and Allowances Benefit payments to Trade Act claimants
FUTA	Federal Unemployment Tax Act
FY	Fiscal Year
GDP	Gross Domestic Product
IUR	Insured Unemployment Rate
OUTYEARS	Years beyond the budget year
TEUC	Temporary Extended Unemployment Compensation Temporary extended benefit program, March 2002 – January 2005
TUR	Total Unemployment Rate
UCFE	Unemployment Compensation for former Federal Employees
UCX	Unemployment Compensation for ex-Servicemen
UI	Unemployment Insurance
UTF	Unemployment Trust Fund