

National Farmworker Jobs Program

See our program website at <http://www.doleta.gov/MSFW/>

Performance Goals

GPRA Performance Measure	PY 2008 Target
Entered Employment	78%
Retained Employment	74%
Average Earnings	\$9,531

Analysis

- Total number of participants for the quarter ending December 31, 2008, was 12,014.
- The Entered Employment Rate of 81 percent is two percentage points higher than the previous year's result.
- There was an increase of \$189 in the Average Earnings when compared with the same period one year ago.
- The Employment Retention Rate of 75 percent is a slight decrease from one year ago.

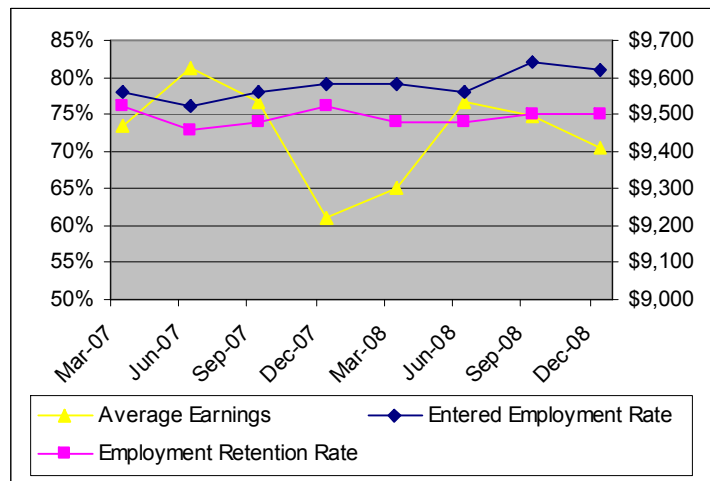
Charting Program Performance

Performance Measure	Quarter Ending 12/31/07 ¹	Quarter Ending 12/31/08 ¹
Entered Employment	79%	81% ²
Retained Employment	76%	75% ²
Average Earnings	\$9,220	\$9,409 ²

¹ All performance measure data is cumulative four quarter data.

² The performance results for the quarter ending December 31, 2008, do not include results for three new grantees: Puerto Rico, Nevada, and Wyoming due to the time lag for extra data.

Performance Progress in the Past Eight Quarters



Program Description

The National Farmworker Jobs Program (NFJP) assists migrants and other seasonally-employed farm workers and their families achieve economic self-sufficiency through job training and other services that address their employment related needs.

NFJP serves economically disadvantaged farm workers who are primarily employed in agricultural labor that is characterized by chronic unemployment and underemployment. Assistance from the NFJP is accessed through the NFJP grantee partners and local One-Stop Career Centers.