

Overview of Wildland Fire Organizations

January 2009

Created by the
NWCG Staff

Table of Contents

- Wildland Fire Governance Structure
- Interagency Participation on Wildland Fire Committees
(Agency & Interagency Organization Structures)
- Wildland Fire Leadership Council (WFLC)
- Fire Executive Council (FEC)
- National Fire & Aviation Executive Board (NFAEB)
- National Wildfire Coordinating Group (NWCG)
- National Multi-Agency Coordination (NMAC) Group
- Geographic Area Coordination Group (GACG)
- Interagency Teams and Groups
- Interim NWCG Sub-Structure

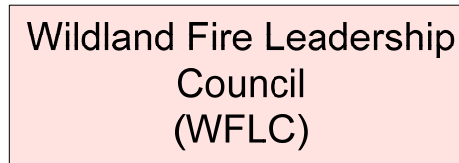
Interagency Wildland Fire Governance Structure

FUNCTION

ORGANIZATION

MEMBERSHIP

Strategic Leadership and Oversight to Implement National Fire Plan and National Fire Policy

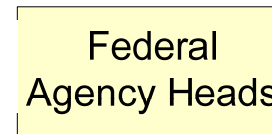


- USDA Under Secretary and Deputy Undersecretary, Natural Resources and the Environment
- USDA Chief, Forest Service (USDA/FS)
- DOI Assistant Secretary, Policy Management and Budget
- DOI Assistant Secretary, Land and Minerals Management
- Bureau Directors – NPS, FWS, BLM, BIA, USGS
- DHS Federal Emergency Management Agency representative
- Elected officers of tribal, state, county and municipal governments or designated employees

Coordinated Policy and Strategic Direction (Fire/Fuels/Aviation)



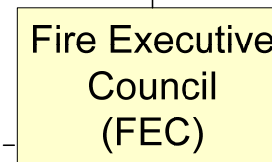
- State Land/Resource Mgmt. Organization Heads
- Tribal Leaders



- Bureau Directors, DOI Fire Agencies
- Chief, USDA/FS
- Deputy Asst. Secretary, DOI Business Mgmt & Wildland Fire
- Administrator, U.S. Fire Administration (USFA)

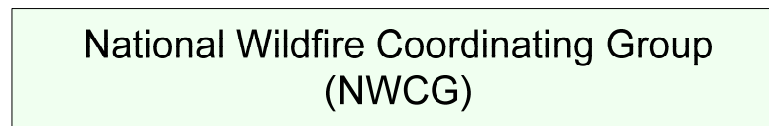


- NASF Forest Fire Prot. Committee:
 - State Representatives
 - Tribal Representatives
- ITC Fire Sub-Committee:
 - Tribal Representatives



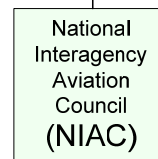
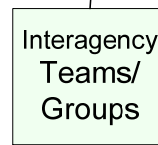
- Director, USDA/FS Fire & Aviation
- Director, DOI Office of Wildland Fire Coordination
- Asst. Directors/equivalent: BLM, BIA, FWS, NPS
- Assoc. Director, DOI Aviation Mgmt. Directorate
- Deputy Administrator, U.S. Fire Administration
- Chair, NWCG (ex officio)

Coordinated Policy and Program Implementation



- Fire Directors (NIFC): BLM, NPS, FWS, BIA, USFS
- Fire Director, NASF
- Chief, Nat'l Fire Program, USFA
- Tribal Representative, Intertribal Timber Council
- National Leader, Forest Fire Systems Research

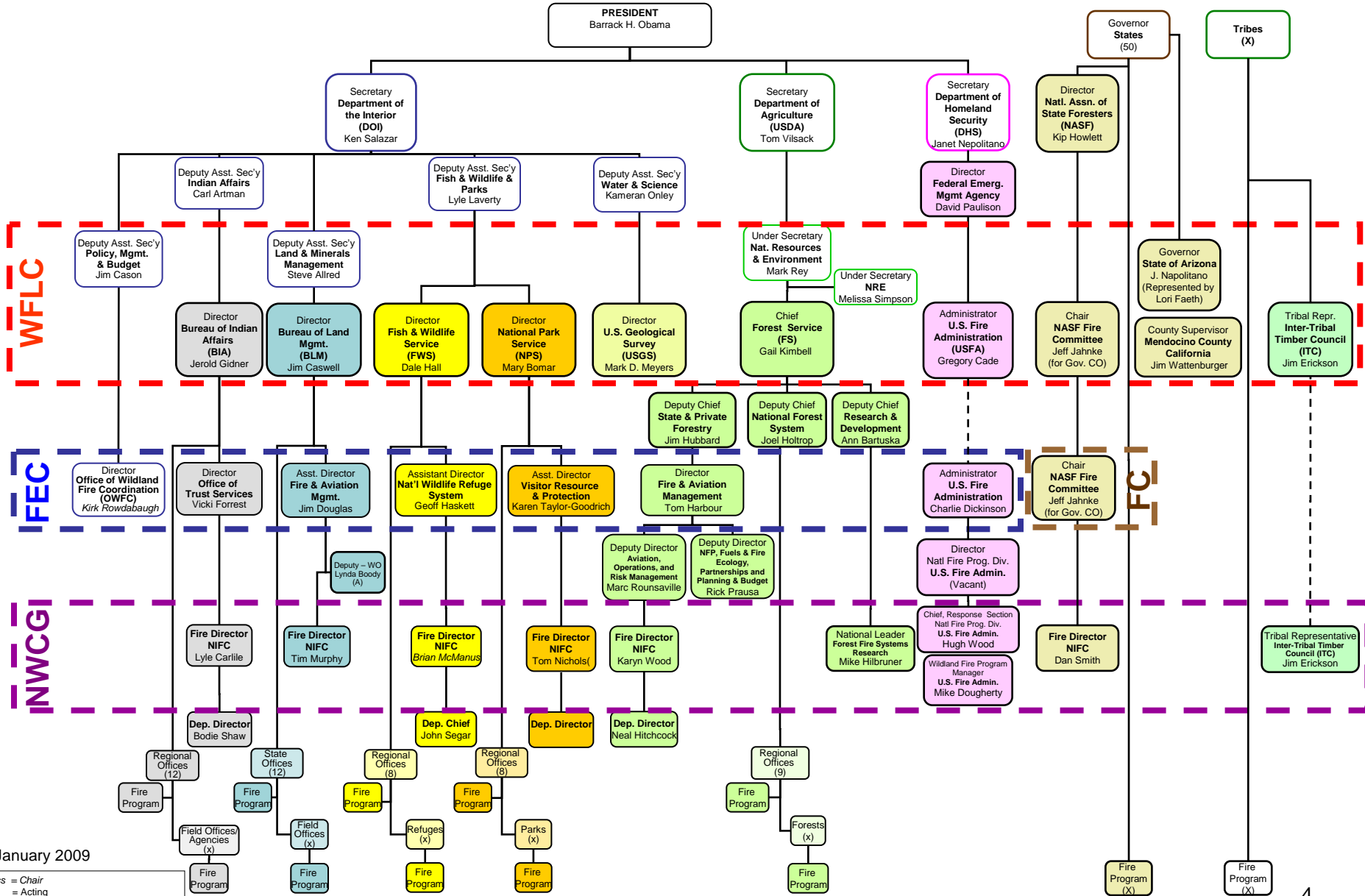
Program Management Standards and Incident Operations



- Agency Staff



Interagency Participation on Wildland Fire Committees



January 2009

Italics = Chair
 (A) = Acting
 (X) = Many

FC = NASF Fire Committee
 FEC = Fire Executive Council
 NWCG = National Wildfire Coordinating Group
 WFLC = Wildland Fire Leadership Council

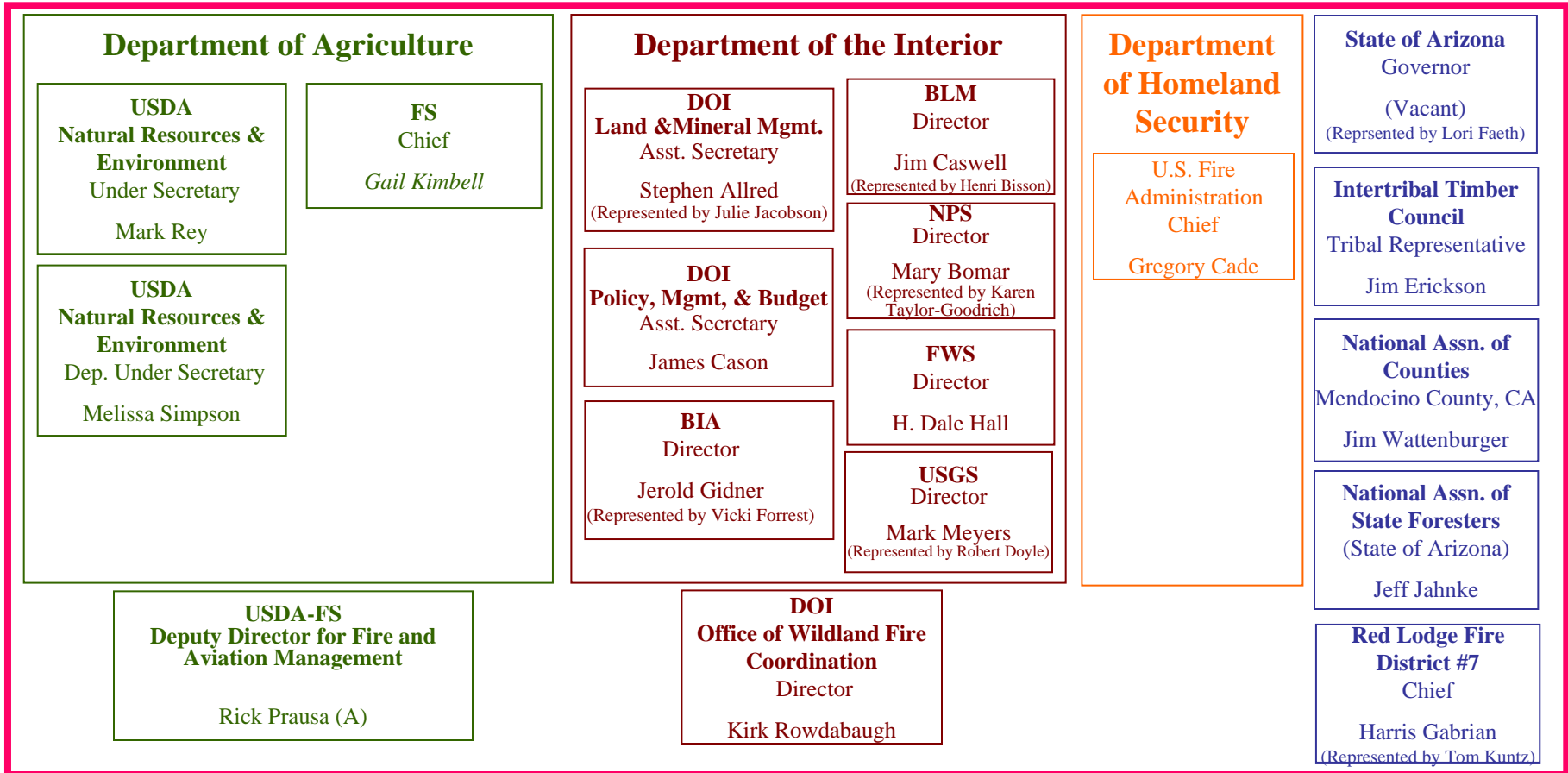
These charts are intended only to provide a general picture of these organizations and is NOT to be construed as authoritative or deemed totally accurate.

Wildland Fire Leadership Council (WFLC)

Provides strategic leadership and oversight

Voting Members

Support Staff



Italics = Chair
(A) = Acting

Wildland Fire Leadership Council (WFLC)

Mission

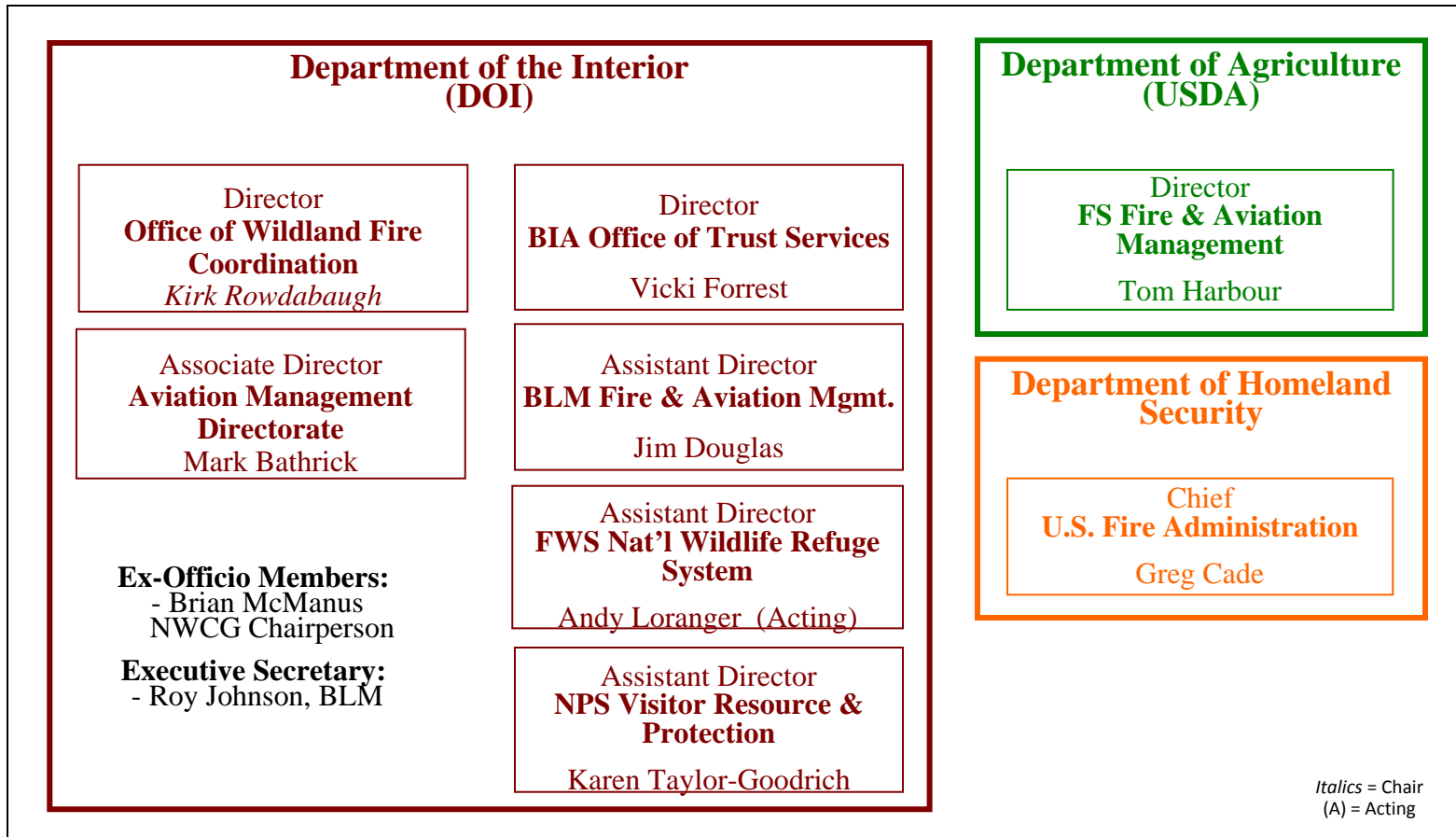
- The Council is a cooperative, interagency organization dedicated to achieving consistent implementation of the goals, actions, and policies in the National Fire Plan and the Federal Wildland Fire Management Policy. The Council provides leadership and oversight to ensure policy coordination, accountability and effective implementation of the National Fire Plan and the Federal Wildland Fire Management Policy.

Membership

- The Council consists of the Department of Agriculture's Undersecretary for Natural Resources and the Environment and the Chief of the U.S. Forest Service; the Department of the Interior's Directors of the National Park Service, the Fish and Wildlife Service, and the Bureau of Land Management, the Assistant Secretary of Indian Affairs and the Chief of Staff to the Secretary of the Interior; the Department of Homeland Security's U.S. Fire Administration; the Intertribal Timber Council; the Western Governors Association; the National Association of State Foresters; and the National Association of Counties. Staffing the Council will be coordinated by the Department of Agriculture's Office of Fire and Aviation Management and the Department of the Interior's Office of Wildland Fire Coordination.

Fire Executive Council (FEC)

Coordinated Policy and Direction (Fire/Fuels/Aviation)



These charts are intended only to provide a general picture of these organizations and is NOT to be construed as authoritative or deemed totally accurate.

Fire Executive Council (FEC)

Mission

- The Fire Executive Council provides coordinated interagency federal executive level wildland fire policy leadership, direction, and program oversight.

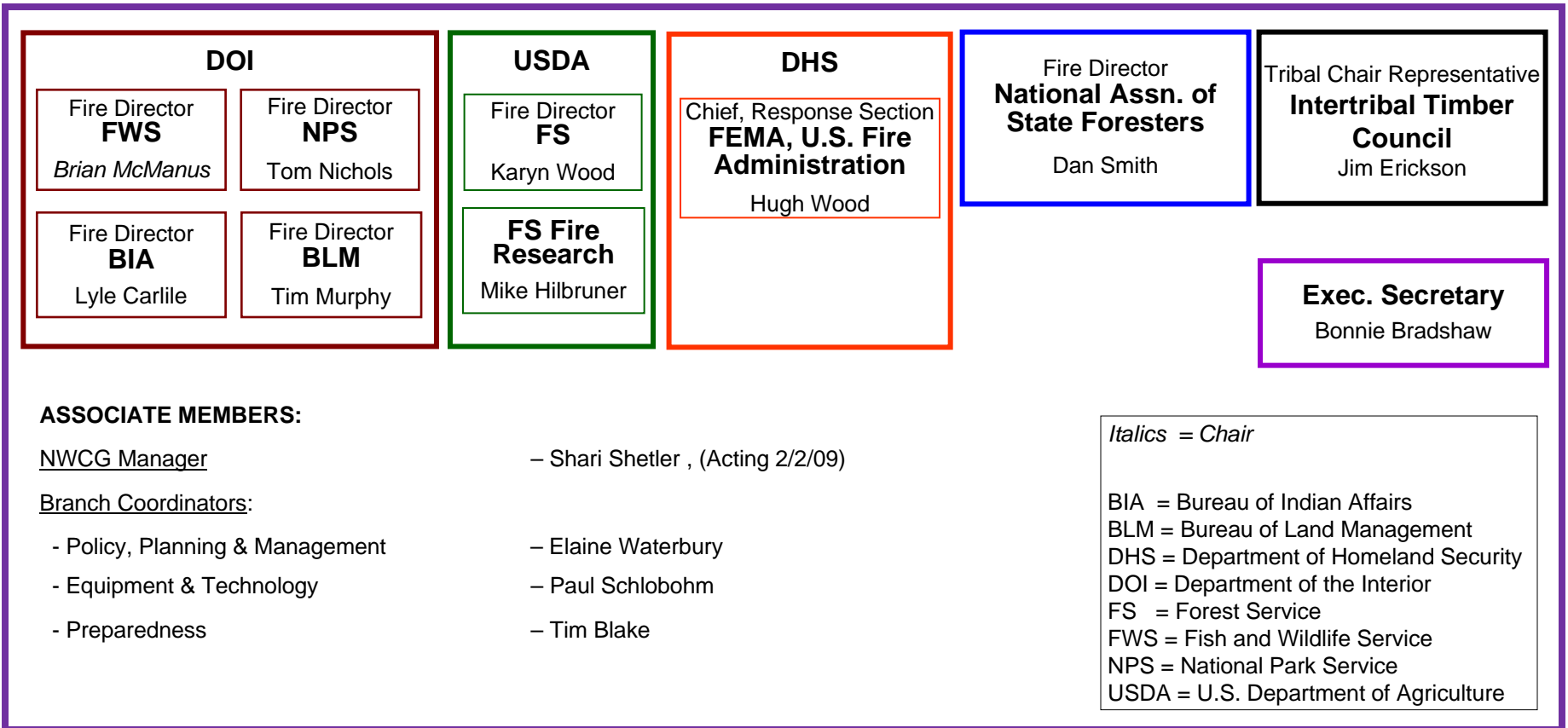
Membership

- Members includes:
 - Director, USDA FS Fire & Aviation Management
 - Director, DOI Office of Wildland Fire Coordination
 - BLM Assistant Director, Office of Fire and Aviation Management
 - NPS Associate Director, Visitor and Resource Protection
 - FWS Assistant Director, National Wildlife Refuge System
 - BIA Deputy Director, Trust and Services
 - Associate Director, DOI Aviation Management Division
 - Administrator, DHS U. S. Fire Administration

 - Chair, NWCG, in an *ex officio* capacity

National Wildfire Coordinating Group (NWCG) Executive Board

Coordinated Policy and Program Implementation



(See pages 15 & 17 for the NWCG subgroups)

National Wildfire Coordinating Group (NWCG)

Mission

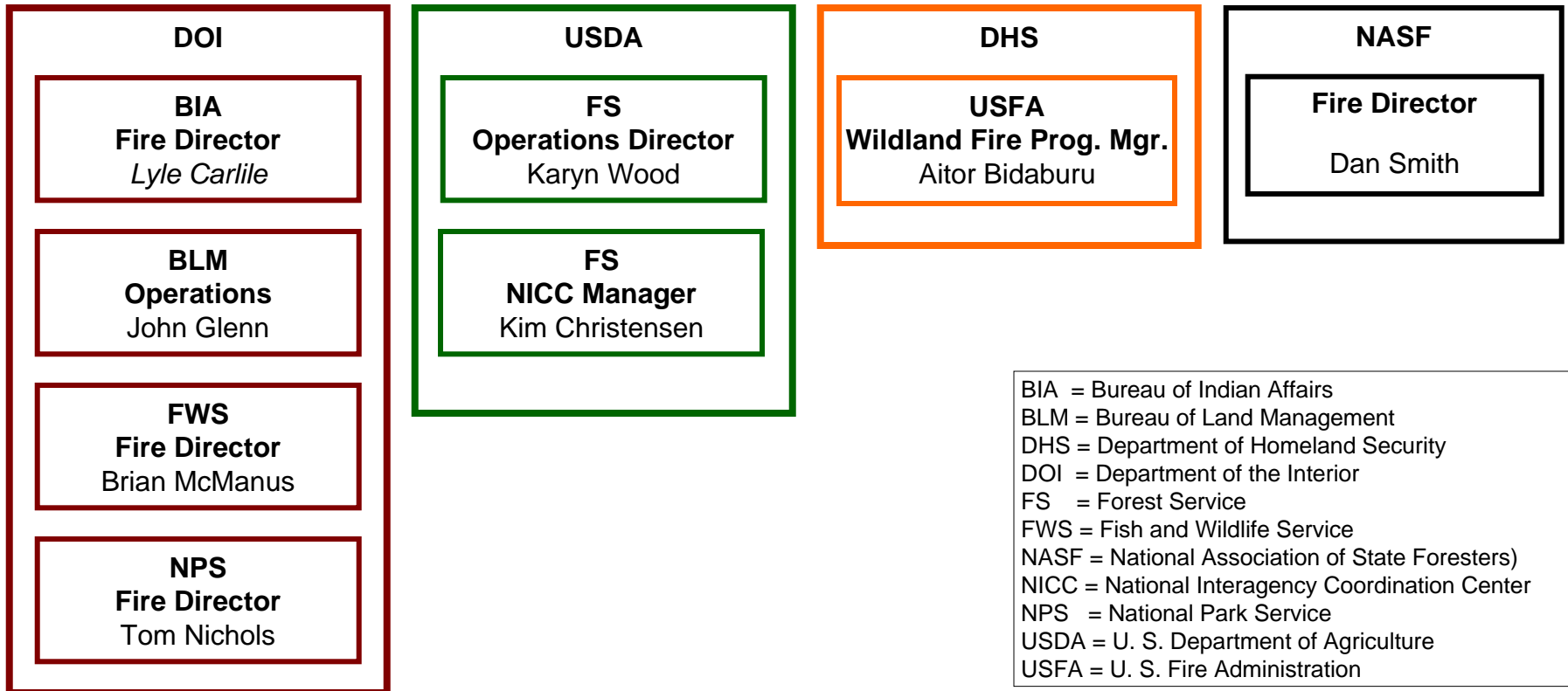
- The purpose of NWCG is to coordinate programs of the participating wildfire management agencies so as to avoid wasteful duplication and to provide a means of constructively working together. Its goal is to provide more effective execution of each agency's fire management program. The group provides a formalized system to agree upon standards of training, equipment, qualifications, and other operational functions. Agreed upon policies, standards, and procedures are implemented directly through regular agency channels.

Membership

- NWCG is made up of the Fire Directors of the USDA Forest Service; four Department of the Interior agencies: Bureau of Land Management (BLM), National Park Service (NPS), Bureau of Indian Affairs (BIA), and the Fish and Wildlife Service (FWS), and the National Association of State Foresters (NASF).
- The Intertribal Timber Council (ITC)

National Multi-Agency Coordination (NMAC) Group

Manages national wildland fire operations



These charts are intended only to provide a general picture of these organizations and is NOT to be construed as authoritative or deemed totally accurate.

National Multi-Agency Coordination (NMAC) Group

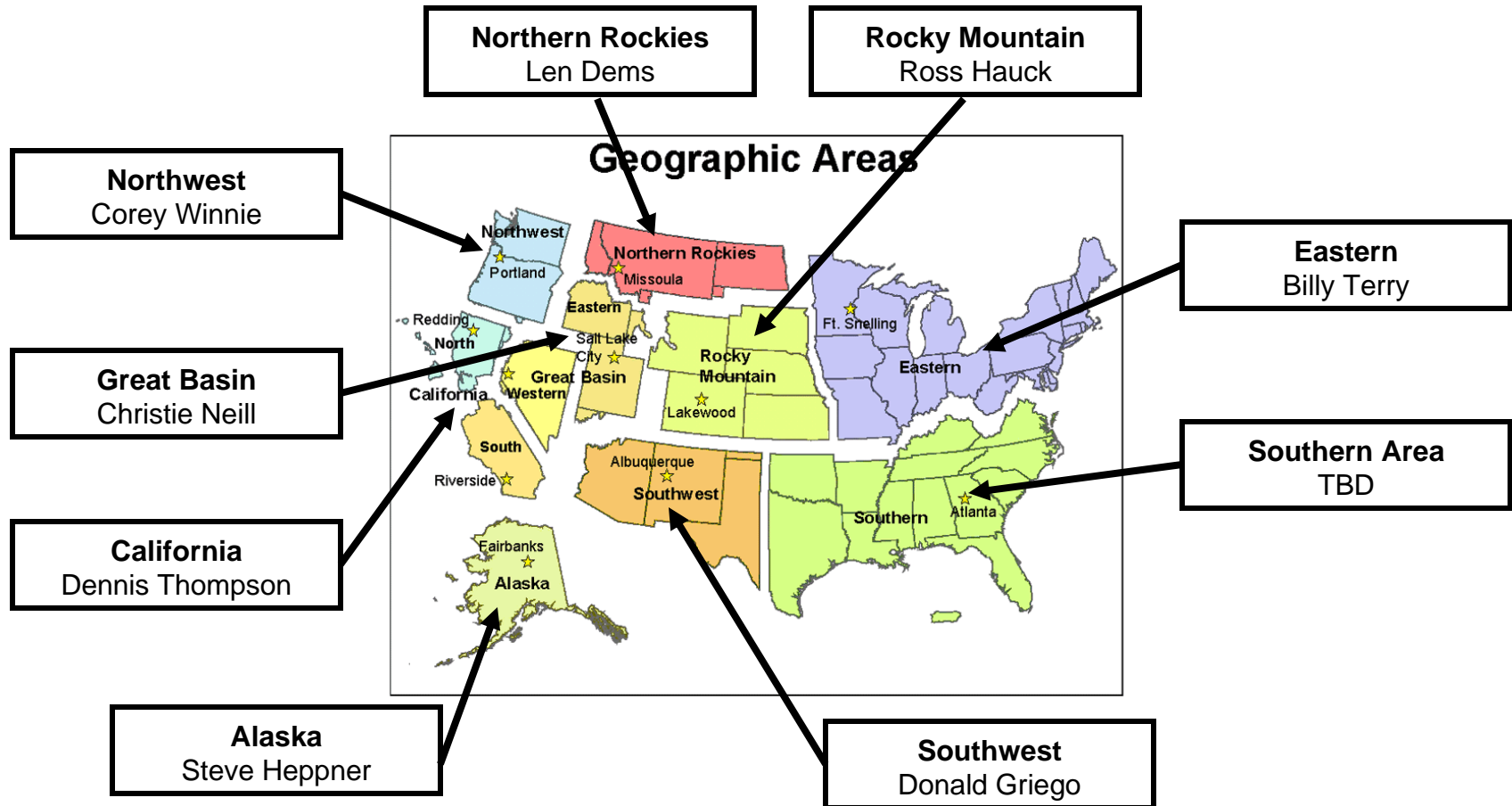
Mission

- The purpose of the NMAC Group is to manage wildland fire operations on a national scope when fire management resource shortages are probable.
 - Provide oversight of general business practices between the National Multi Agency Coordination (NMAC) group and the Geographic Area Multi-Agency Coordination (GMAC) groups.
 - Establish priorities among geographic areas.
 - Direct, control, and allocate resources among or between geographic areas to meet NMAC priorities.
 - Implement decisions of the NMAC

Membership

- The National Multi-Agency Coordination (NMAC) group consists of one representative from each of the five federal wildland fire agencies (BLM, USFWS, NPS, BIA, USFS), the National Association of State Foresters (NASF), and the Federal Emergency Management Agency – United States Fire Administration (FEMA-USFA)

Geographic Area Coordination Group (GACG)



These charts are intended only to provide a general picture of these organizations and is NOT to be construed as authoritative or deemed totally accurate.

Geographic Area Coordination Group (GACG)

Mission

- The mission of this group is to provide an interagency approach to wildland fire management and all risk support within the Geographic Area. They help develop and implement interagency wildland fire management programs to improve effectiveness and efficiency. This is achieved by:
- Operating at a strategic level
- Encouraging cooperation across jurisdictional and administrative boundaries
- Overseeing fire health and safety issues
- Providing interagency direction to field units
- Providing a group response to agency specific requests that have interagency implications

Membership

- The GACG is comprised of representatives from federal, state, and cooperating agencies. Each member of the group has delegated authority to act on behalf of their respective agencies for purposes of planning, priority setting, and implementation of agency policies, direction, and standards for fire management activities within the Geographic Area.

Interagency Teams and Groups

NWCG Staff <i>Judy Crosby</i>	Fire Facilities Team <i>Terry O'Connell</i>	Federal Fire Aviation Safety Team <i>Larry Sutton</i>	Federal Fire Policy Directives Task Group <i>(vacant)</i>	Fire Shelter Task Group <i>Tory Henderson</i>
Budget Advisory Unit (former Federal Wildland Fire Budget & Planning Team) <i>Denise Schmitz</i>	Federal Wildland Firefighter Interagency Medical Stds Program <i>Kevin Jensen</i>	Fire & Air Coordination Team <i>Pete Lahm</i>	Fire Environment Working Team <i>(vacant)</i>	Fire Equipment Working Team <i>Tory Henderson</i>
Fire Use Working Team <i>Dave Mueller</i>	GACC Chair Advisory Group <i>Pam McAlpin</i>	Incident Business Practices Working Team <i>Kathy Shelton</i>	Incident Operations Standards Working Team <i>Vince Mazzier</i>	Info Resource Mgmt. Working Team <i>Shari Shetler</i>
Interagency Fire Planning Team <i>Becky Brooks</i>	NIMO Implementation Team <i>Bill Waterbury</i>	National Burned Area Emergency Response Coordinators Group <i>Tom Branson</i>	National Coordinators Group <i>Kim Christensen</i>	National Area Command/Incident Command Group <i>Rocky Opliger Tom Cable</i>
National Multi-Agency Coordination Group <i>Lyle Carlile</i>	National Interagency Aviation Council <i>Neal Hitchcock</i>	National Interagency Fuels Coordination Group <i>Dan Buckley</i>	National Predictive Services Group <i>Tom Wordell</i>	NWCG Webmaster (nwcg.gov) <i>Tammy Denney</i>
NWCG Training Development Unit <i>Deb Epps</i>	Publication Mgmt. System Working Team <i>Allen Deitz</i>	Radio Communications Task Group <i>Matt Cnudde</i>	RAWS Partners Group <i>Scott Bradshaw</i>	Safety & Health Working Team <i>Michelle Ryerson</i>
Training Working Team <i>Rosemary Thomas</i>	Wildland Fire Education Working Team <i>Maureen Brooks</i>	Wildland Fire Lessons Learned Center <i>Paula Nasiatka</i>	Wildland/Urban Interface Working Team <i>Will May</i>	Wildland Fire Investigation Working Team <i>Alan Carlson Jeff Bonebrake</i>

Brown—WFLC
Red – NFAEB
Blue – NWCG
Green - NMAG

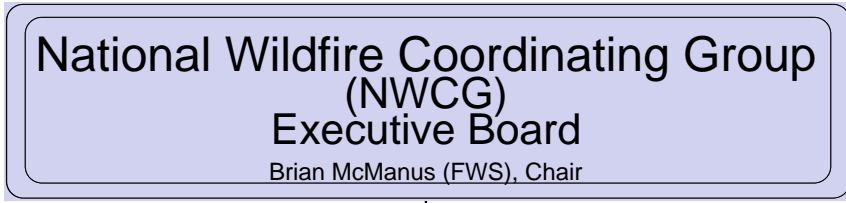
(A) = Acting
Purple = Full-time Staffs

NWCG, NFAEB, and NMAC Teams & Groups

- The NWCG, NFAEB, and NMAC have established teams and groups to carry out the functional work of the interagency wildland fire community. Team/group reports and recommendations are submitted to the parent group for review, approval, and further action.
- As of January 2008, the WFLC, NFAEB, and NMAC sub-groups were moved into the NWCG organization. A reorganization effort is underway that will add to, merge, and/or eliminate this list of teams and groups.

Interim NWCG Sub-Structure

January 2009

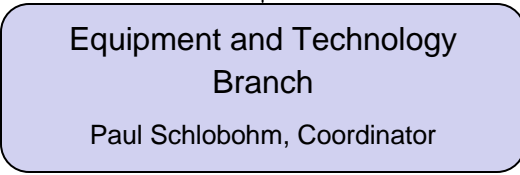


Blue Italics = Interim assignments or point of contact

Lyle Carlile (BIA)
 Backups: Dan Smith, Brian McManus (FWS)



Mike Dougherty (USFA)
 Backup: Tom Nichols (NPS)



Karyn Wood (FS)
 Backup: Tim Murphy (BLM)

