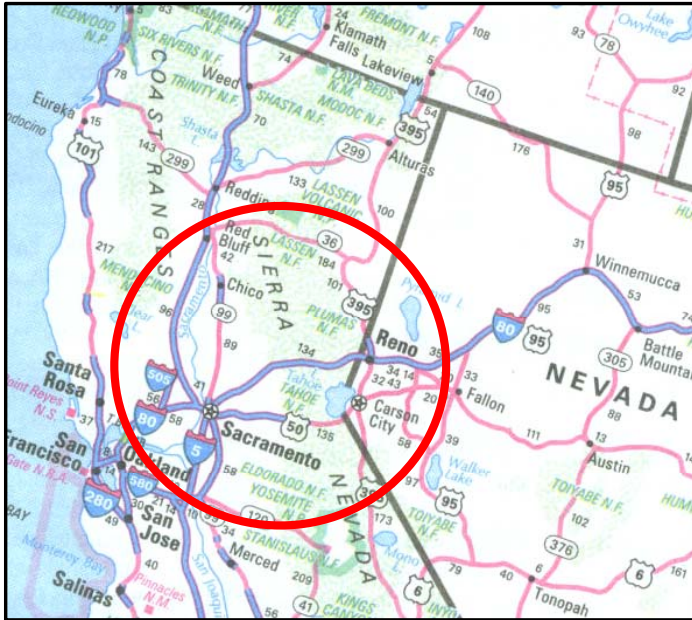


Tahoe Region CROP

A Summary of CROP Landscape Analyses Results
(2007 – 2011)



Tahoe Region CROP:
Center Point: Nevada City, CA
100-mi. radius

- 7 National Forests
- 1 Federal Management Unit
- 22 Ranger Districts
- 2 BLM Districts
- 32 Counties*
- State Lands
- (*no removal planned)

gT = green tons (up to 7" dbh)
S = small log mmbf (>7"-12" dbh)
L = large log mmbf (>12" dbh)

<i>By Species</i> (Black oak, pinyon pine, giant Sequoia, madrone, & Western juniper: all <1% each)		5-yr total (Biomass = gT)	5-yr total Small log (mmbf)	5-yr total Large log (mmbf)
White Fir	(32% of 5-yr. total)	235,607	232.14	207.78
Ponderosa Pine/Jeffrey Pine	(17% of 5-yr. total)	118,346	112.1	129
White Fir/Red Fir	(12% of 5-yr. total)	105,721	68.15	88.79
Douglas Fir	(10% of 5-yr. total)	75,346	65.01	74.28
Ponderosa Pine	(6% of 5-yr. total)	152,182	40.92	25.80
Incense Cedar	(6% of 5-yr. total)	81,497	39.68	36.99
Red Fir	(5% of 5-yr. total)	37,818	34.97	27.82
Other Conifers (non-specified)	(4% of 5-yr. total)	76,650	32.25	18.86
Sugar Pine	(4% of 5-yr. total)	53,981	27.41	24.74
Jeffrey Pine	(1% of 5-yr. total)	1,600	11.23	9.30
Lodgepole Pine	(1% of 5-yr. total)	2,570	13.0	4.88
Tan Oak	(1% of 5-yr. total)	2,262	2.85	7.24

Plumas NF: (gT= 194,375; Small log = 235.16 mmbf; Large log = 300.66 mmbf)

Ranger Districts	5-yr total (Biomass = gT)	5-yr total Small log (mmbf)	5-yr total Large log (mmbf)
Beckwourth	27,875	31.36	40.56
Mt. Hough	121,250	146.7	115.25
Feather River	45,250	57.1	144.85

Lassen NF: (3 RDs combined)

Ranger Districts	5-yr total (Biomass = gT)	5-yr total Small log (mmbf)	5-yr total Large log (mmbf)
	38,669	156.32	92.88

Eldorado NF: (gT= 359,495; Small log = 96.80 mmbf; Large log = 30 mmbf)

Ranger Districts	5-yr total (Biomass = gT)	5-yr total Small log (mmbf)	5-yr total Large log (mmbf)
Georgetown	107,849	29.04	9
Placerville	107,849	29.04	9
Pacific	71,899	19.36	6
Amador	71,899	19.36	6

Stanislaus NF: (gT= 170,000; Small log = 60.87 mmbf; Large log = 82.58 mmbf)

Ranger Districts	5-yr total (Biomass = gT)	5-yr total Small log (mmbf)	5-yr total Large log (mmbf)
Mi-Wok	53,800	19.78	20.67
Calaveras	90,500	28.99	43.81
Summit	25,700	12.1	18.1

Tahoe NF: (gT= 74,375; Small log = 72 mmbf; Large log = 70.62 mmbf)

Ranger Districts	5-yr total (Biomass = gT)	5-yr total Small log (mmbf)	5-yr total Large log (mmbf)
Yuba River	26,875	22	25.12
American River	26,250	22	22.75
Sierraville	17,500	24	22.5
Truckee	3,750	4	.25

Mendocino NF: (gT= 10,920; Small log = 9.38 mmbf; Large log = 23.48 mmbf)

Ranger Districts	5-yr total (Biomass = gT)	5-yr total Small log (mmbf)	5-yr total Large log (mmbf)
Grindstone	6,770	6.03	12.10
Upper Lake & Covelo	4,150	3.35	11.38

Humboldt-Toiyabe NF: (gT= 0; Small log = 11.45 mmbf; Large log = 3.97 mmbf)

Ranger Districts	5-yr total (Biomass = gT)	5-yr total Small log (mmbf)	5-yr total Large log (mmbf)
Carson	0	8.9	3.97
Bridgeport	0	2.55	0

Lake Tahoe BMU:

5-yr total (Biomass = gT)	5-yr total Small log (mmbf)	5-yr total Large log (mmbf)
56,650	39.75	36.41

California (state): (gT= 372.9; Small log = .95 mmbf; Large log = 12.62 mmbf)

Agencies	5-yr total (Biomass = gT)	5-yr total Small log (mmbf)	5-yr total Large log (mmbf)
Boggs Mtn. State Forest	0	.5	3.7
UC Center of Forestry			
Blodgett Forest	372.9	.386	8.507
Baker Forest	0	.064	.413

Nevada (state):

Agencies	5-yr total (Biomass = gT)	5-yr total Small log (mmbf)	5-yr total Large log (mmbf)
NV DOF-DSL	41,450	2.025	3.035

California BLM: (gT= 25; Small log = .88 mmbf; Large log = .06 mmbf)

Agencies	5-yr total (Biomass = gT)	5-yr total Small log (mmbf)	5-yr total Large log (mmbf)
California BLM			
Eagle Lake FO	25	.14	.06
Folsom FO	0	.75	0

Nevada BLM: (no field office breakout provided)

5-yr total (Biomass = gT)	5-yr total Small log (mmbf)	5-yr total Large log (mmbf)
850	1.91	.8

Tahoe Region: All Agencies CROP offering/removal '07 - '11
(gT = 947,182 / S = 687.516 mmbf / L = 657.131 mmbf)
(1,534.084 total mmbf)

gT = green tons (up to 7" dbh)
 S = small log mmbf (>7"-12" dbh)
 L = large log mmbf (>12" dbh)

UC COF: 2 Forests - <1%
(gT = 373 / S = .45 / L = 8.92)

Humboldt-Toiyabe NF: 2 RDs - 1%
(gT = 0 / S = 11.45 / L = 3.975)

***Plumas NF: 3 RDs - 37%**
(gT = 194,375 / S = 235.165 / L = 300.66)
**A portion of volume may be removed but not available for public offering.*

Mendocino NF: 3 RDs - 2%
(gT = 10,920 / S = 9.385 / L = 23.483)

Eldorado NF: 4 RDs - 13%
(gT = 359,495 / S = 96.805 / L = 30)

Tahoe NF - 10%
(gT = 74,375 / S = 72 / L = 70.625)

***Lassen NF - 17%**
(gT = 38,669 / S = 156.321 / L = 92.883)
** No data available by RD.*

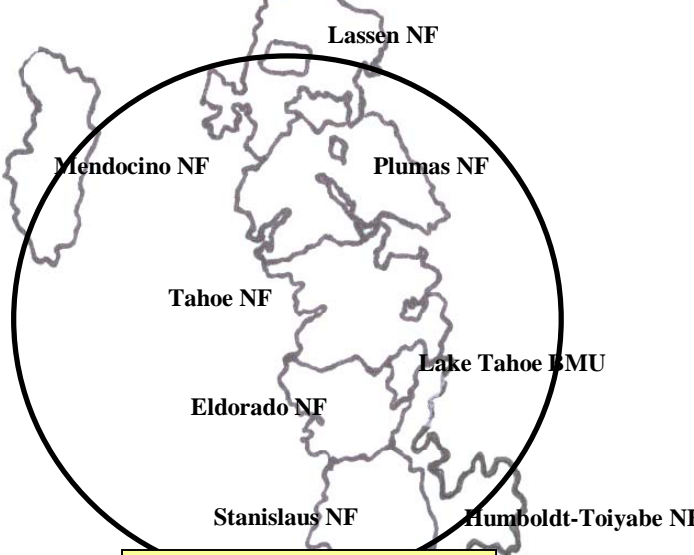
Lake Tahoe BMU - 6%
(gT = 56,650 / S = 39.75 / L = 36.41)

CA BLM: 2 FOs - <1%
(gT = 25 / S = .885 / L = .06)

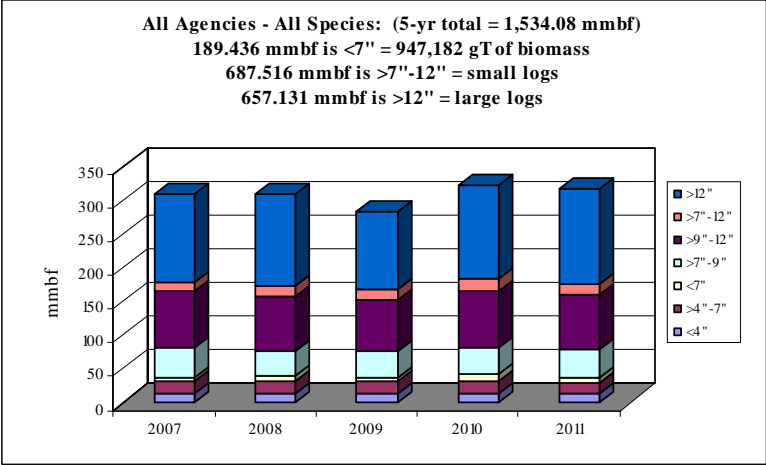
Stanislaus NF: 3 RDs - 12%
(gT = 170,000 / S = 60.87 / L = 82.58)

Boggs Mtn. SF - <1%
(gT = 0 / S = .5 / L = 3.7)

NV DOF-DSL - 1%
(gT = 41,450 / S = 2.025 / L = 3.035)



NV BLM - <1%
(gT = 850 / S = 1.91 / L = .8)

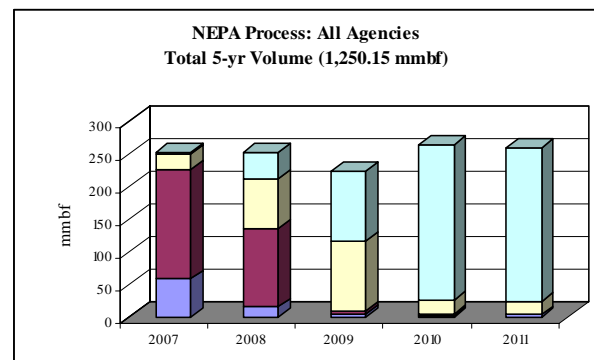
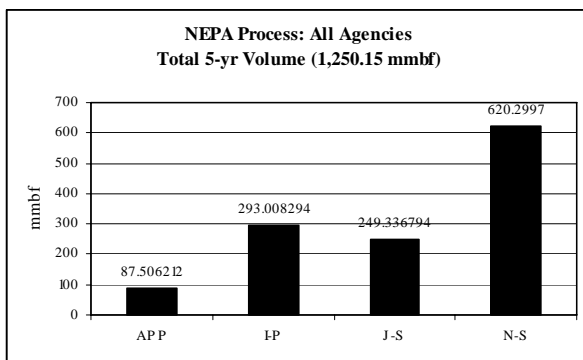


	gT	mmbf	
	Biomass	Small Log	Large Log
2007	182872.4	140.9485275	130.4777403
2008	193527.4	134.5171684	135.4165892
2009	183502.4	130.7218348	113.535587
2010	203127.4	142.2418348	138.100587
2011	184152.4	139.0868348	139.600587
Totals	947182.01	687.5162003	657.1310905
%	12%	45%	43%
mmbf	189.4364		

1534.083693

Tahoe Region NEPA Process – All Agencies:
 Total 5-yr volume (1250.15 mmbf; includes gT as mmbf)

	<i>mmbf</i>	<i>% of total</i>
<i>Approved (APP)</i>	87.506	7%
<i>In process (I-P)</i>	293.008	23%
<i>Just started (J-S)</i>	249.337	20%
<i>Not started (N-S)</i>	620.299	50%



Tahoe Region: All Agencies CROP offering/removal '07 – '11
(gT = 947,182/ S = 687.516 mmbf / L = 657.131 mmbf)

Plumas NF:*

- A Beckwourth RD (gT = 27,875 / S = 31.365 / L = 40.56)**
- B Mt. Hough RD (gT = 121,250 / S = 146.7 / L = 115.25)
- C Feather River RD (gT = 45,250 / S = 57.1 / L = 144.85)

Lassen NF:***

- D Lassen NF (gT = 38,669 / S = 156.321 / L = 92.883)

Eldorado NF:

- E Georgetown RD (gT = 107,848 / S = 29.041 / L = 9)
- F Placerville RD (gT = 107,848 / S = 29.041 / L = 9)
- G Pacific RD (gT = 71,899 / S = 19.361 / L = 6)
- H Amador RD (gT = 71,899 / S = 19.361 / L = 6)

Stanislaus NF:

- I Mi-Wok RD (gT = 53,800 / S = 19.78 / L = 20.67)
- J Calaveras RD (gT = 90,500 / S = 28.99 / L = 43.81)
- K Summit RD (gT = 25,700 / S = 12.1 / L = 18.1)

Tahoe NF:

- L Yuba River RD (gT = 26,875 / S = 22 / L = 25.125)
- M American River RD (gT = 26,250 / S = 22 / L = 22.75)
- N Sierraville RD (gT = 17,500 / S = 24 / L = 22.5)
- O Truckee RD (gT = 3,750 / S = 4 / L = .25)

Lake Tahoe BMU:

- P Lake Tahoe BMU (gT = 56,650 / S = 39.75 / L = 36.41)

Mendocino NF:

- Q Grindstone RD (gT = 6,770 / S = 6.035 / L = 12.103)
- R Upper Lake & Covelo RDs (gT = 4,150 / S = 3.35 / L = 11.38)

Humboldt-Toiyabe NF:

- S Carson RD (gT = 0 / S = 8.9 / L = 3.975)
- T Bridgeport RD (gT = 0 / S = 2.55 / L = 0)

NV DOF-DSL:

- U NV DOF-DSL (gT = 41,450 / S = 2.025 / L = 3.035)

UC Center of Forestry:

- V Blodgett Forest (gT = 372.9 / S = .386 / L = 8.507)
- W Baker Forest (gT = 0 / S = .064 / L = .413)

Boggs Mtn. State Forest:

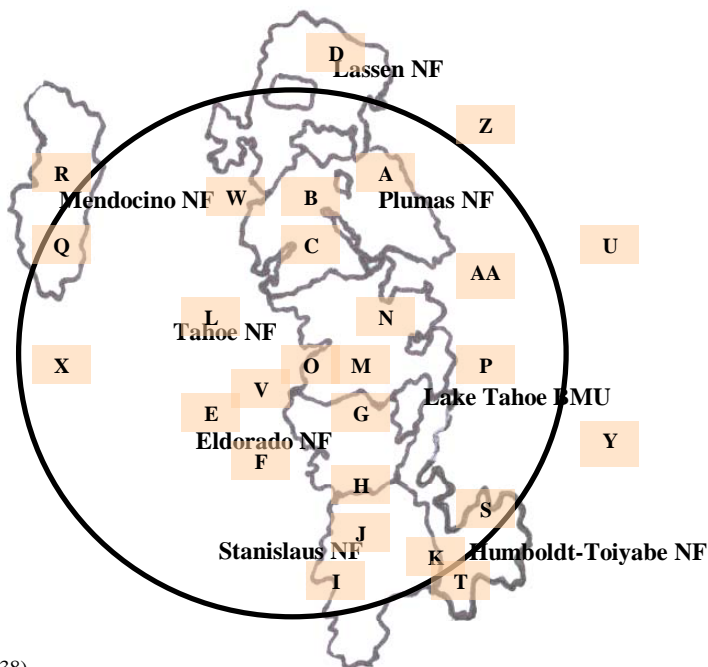
- X Boggs Mtn. State Forest (gT = 0 / S = .5 / L = 3.7)

NV BLM:

- Y NV BLM (gT = 850 / S = 1.91 / L = .8)

CA BLM:

- Z Eagle Lake FO (gT = 25 / S = .135 / L = .06)
- AA Folsom FO (gT = 0 / S = .75 / L = 0)



*A portion of volume may be removed but not available for public offering.
 ** 5-yr volume offering
 ***No data available by RD.

Tahoe Region: White Fir CROP offering/removal '07 - '11
(gT = 235,607 / S = 232.145 mmbf / L = 207.786 mmbf)
(487.052 mmbf)

gT = green tons (up to 7" dbh)
 S = small log mmbf (>7"-12" dbh)
 L = large log mmbf (>12" dbh)

UC Center of Forestry - <1%
(gT = 62 / S = .152 / L = 1.947)

Humboldt-Toiyabe NF: 1 RD - <1%
(gT = 0 / S = .94 / L = .517)

***Plumas NF: 3 RDs - 63%**
(gT = 99,312 / S = 129.115 / L = 159.03)
** A portion of volume may be removed but not available for public offering.*

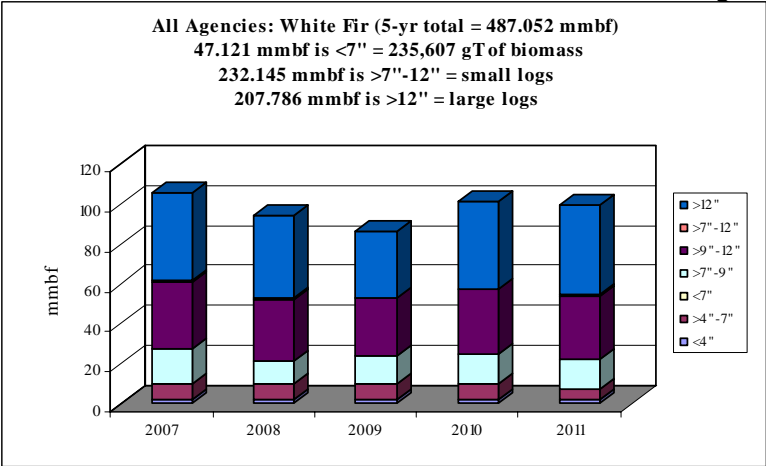
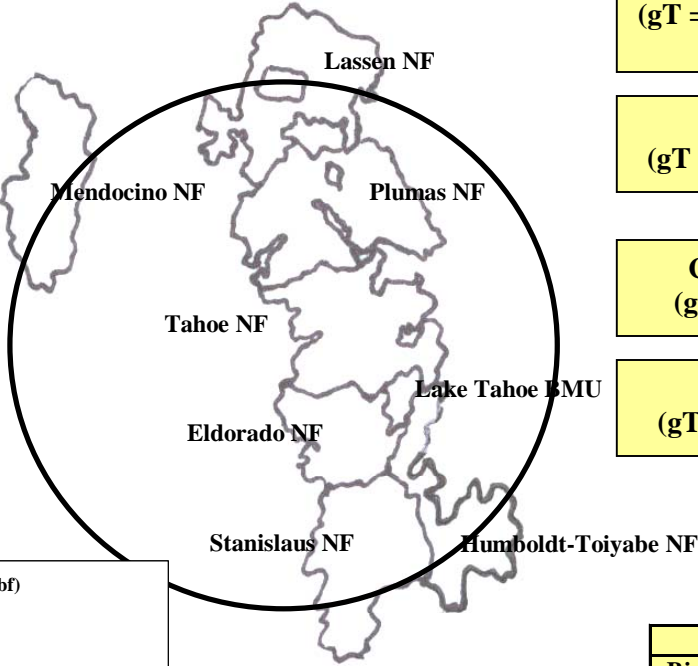
Mendocino NF: 3 RDs - <1%
(gT = 495 / S = .328 / L = 1.52)

***Lassen NF: 26%**
(gT = 32,117 / S = 83.505 / L = 38.54)
** No data available by RD.*

NV DOF-DSL: 2%
(gT = 39,850 / S = .99 / L = 1.011)

CA BLM: 1 FO - <1%
(gT = 25 / S = .02 / L = 0)

Eldorado NF: 4 RDs - 7%
(gT = 63,746 / S = 17.095 / L = 5.22)



	gT	mmbf	
	Biomass	Small Log	Large Log
2007	50509.97	51.24200215	44.26117089
2008	49037.47	42.98584465	41.4345283
2009	48399.97	43.45760805	33.4393469
2010	48999.97	47.86760805	43.3518469
2011	38659.97	46.59170805	45.2993469
Totals	235607.35	232.144771	207.7862399
%	10%	48%	43%
mmbf	47.12147		

487.0524811

Tahoe Region: Ponderosa Pine/Jeffrey Pine CROP offering/removal '07 – '11
(gT = 118,346 / S = 112.099 mmbf / L = 129 mmbf)
(264.769 mmbf)

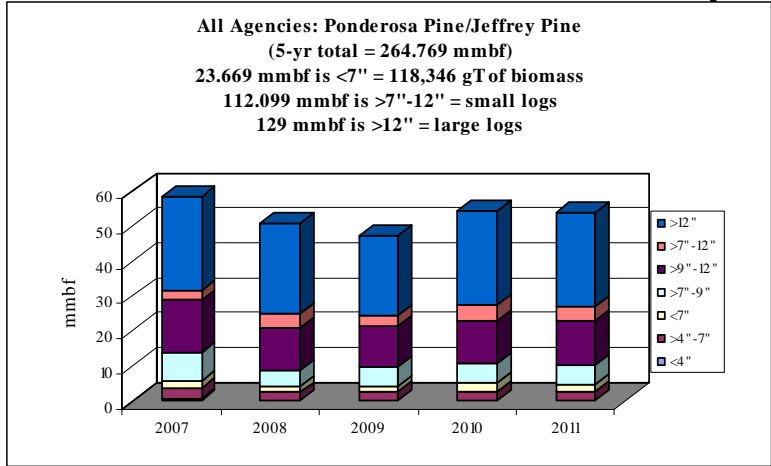
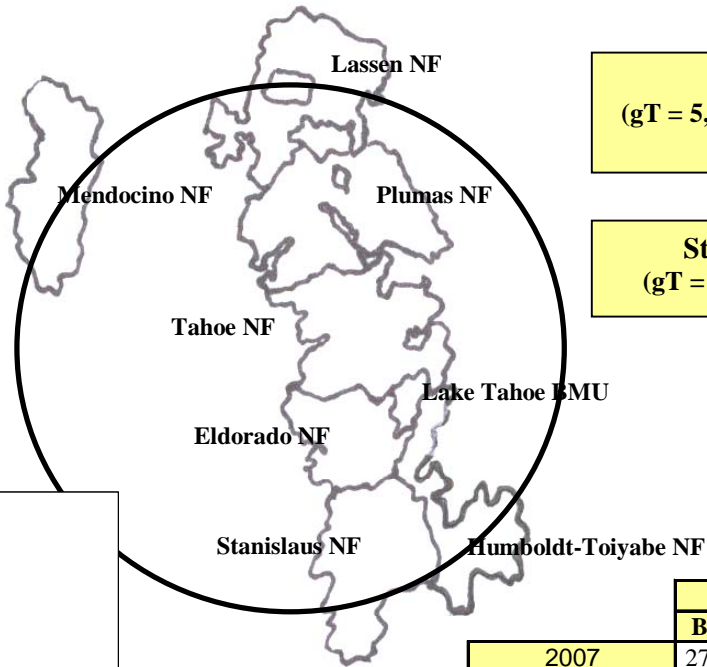
gT = green tons (up to 7" dbh)
 S = small log mmbf (>7"-12" dbh)
 L = large log mmbf (>12" dbh)

***Plumas NF: 3 RDs – 36%**
(gT = 34,992 / S = 36.876 / L = 50.215)
**A portion of volume may be removed but not available for public offering.*

Tahoe NF: 4 RDs – 23%
(gT = 27,210 / S = 27.868 / L = 26.74)

***Lassen NF – 22%**
(gT = 5,909 / S = 28.366 / L = 29.548)
** No data available by RD.*

Stanislaus NF: 3 RDs – 19%
(gT = 50,234 / S = 18.988 / L = 22.497)



	gT	mmbf	
	Biomass	Small Log	Large Log
2007	27570.413	25.98718243	26.73906503
2008	21257.413	20.81078243	25.68846503
2009	20511.913	20.35668243	22.96806503
2010	25504.413	22.47928243	26.78846503
2011	23501.913	22.46468243	26.81656503
Totals	118346.07	112.0986121	129.0006252
%	9%	42%	49%
mmbf	23.669213		

264.7684503

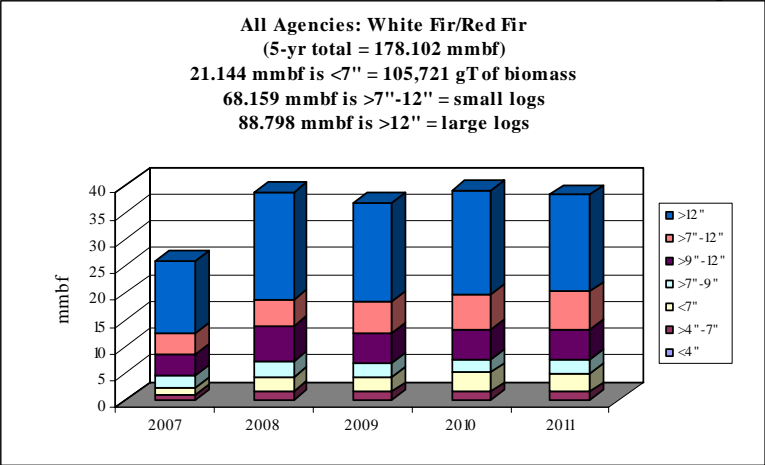
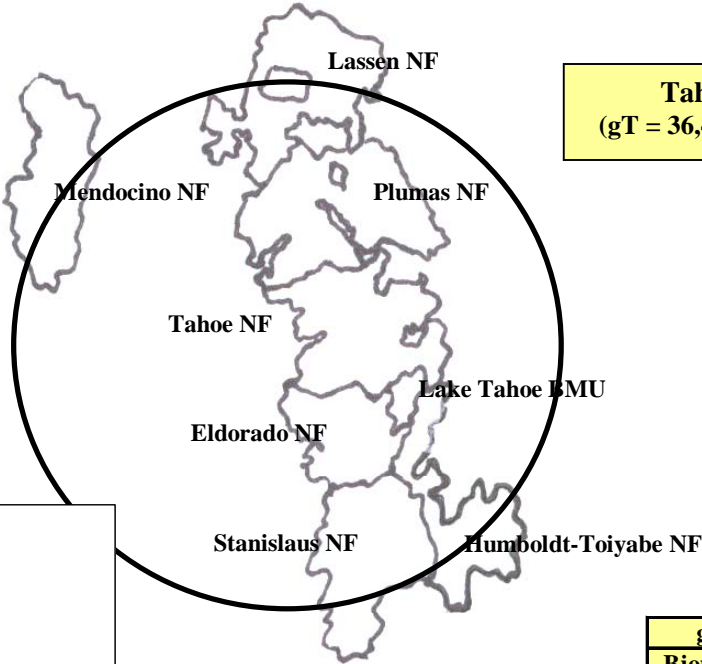
Tahoe Region: White Fir/Red Fir CROP offering/removal '07 – '11
(gT = 105,721 / S = 68.159 mmbf / L = 88.798 mmbf)
(178.102 mmbf)

gT = green tons (up to 7" dbh)
 S = small log mmbf (>7"-12" dbh)
 L = large log mmbf (>12" dbh)

Lake Tahoe BMU – 10%
(gT = 0 / S = 5.26 / L = 12.27)

Stanislaus NF: 3 RDs – 48%
(gT = 69,296 / S = 28.311 / L = 42.851)

Tahoe NF: 4 RDs – 42%
(gT = 36,425 / S = 34.588 / L = 33.677)



	gT	mmbf	
	Biomass	Small Log	Large Log
2007	11591.5	10.2355	13.457
2008	21269.5	14.3276	19.9434
2009	21987.5	13.9275	18.213
2010	25537.5	14.5709	19.1991
2011	25335	15.0975	17.986
Totals	105721	68.159	88.7985
%	12%	38%	50%
mmbf	21.1442		

178.1017

Tahoe Region: Douglas Fir CROP offering/removal '07 – '11
 (gT = 75,346 / S = 65.009 mmbf / L = 74.287 mmbf)
 (154.366 mmbf)

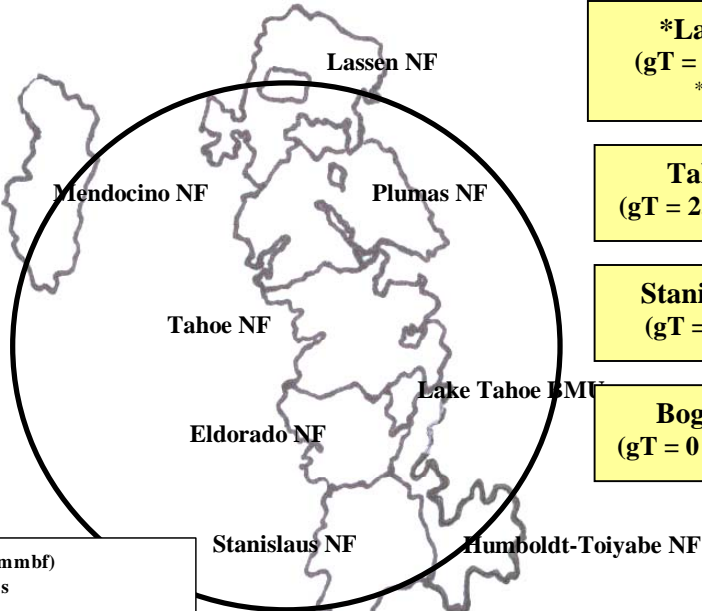
gT = green tons (up to 7" dbh)
 S = small log mmbf (>7"-12" dbh)
 L = large log mmbf (>12" dbh)

UC COF – 1%
 (gT = 62 / S = .101 / L = 1.764)

***Plumas NF: 3 RDs – 50%**
 (gT = 26,232 / S = 31.412 / L = 40.026)
**A portion of volume may be removed but not available for public offering.*

Mendocino NF: 3 RDs – 11%
 (gT = 1,680 / S = 4.754 / L = 12.228)

Eldorado NF: 4 RDs – 15%
 (gT = 43,200 / S = 11.58 / L = 3.57)

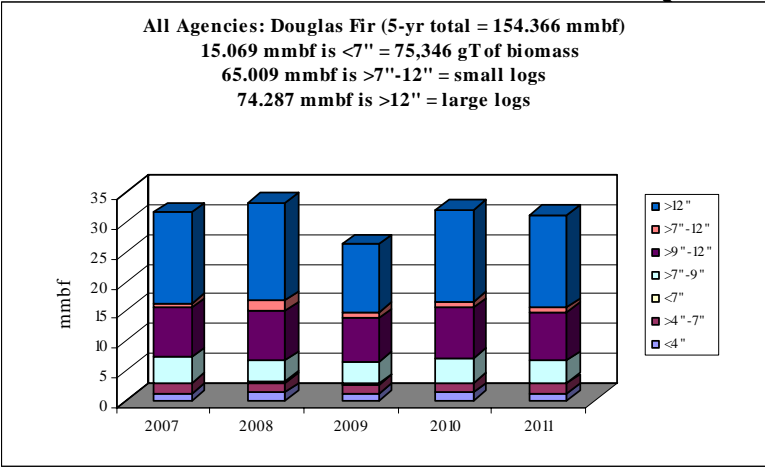


***Lassen NF: RDs – 17%**
 (gT = 0 / S = 14.13 / L = 11.562)
** No data available by RD.*

Tahoe NF: 1 RD – 4%
 (gT = 2,956 / S = 2.42 / L = 2.764)

Stanislaus NF: 2 RDs – <1%
 (gT = 1,215 / S = .488 / L = .57)

Boggs Mtn SF – 1%
 (gT = 0 / S = .123 / L = 1.803)



	mmbf		
	gT Biomass	Small Log	Large Log
2007	15287.18	13.2098514	15.36379635
2008	16197.68	13.54621371	16.40748849
2009	14026.18	11.98974951	11.49922549
2010	15291.18	13.63204951	15.36092549
2011	14543.68	12.63154951	15.65572549
Totals	75345.9	65.00941364	74.28716131
%	10%	42%	48%
mmbf	15.06918		

154.365755

Tahoe Region: Ponderosa Pine CROP offering/removal '07 - '11
(gT = 152,182 / S = 40.921 mmbf / L = 25.809 mmbf)
(97.167 mmbf)

gT = green tons (up to 7" dbh)
 S = small log mmbf (>7"-12" dbh)
 L = large log mmbf (>12" dbh)

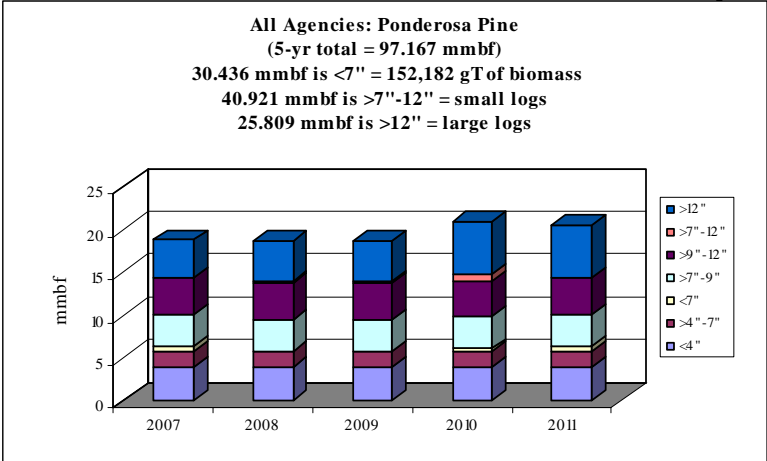
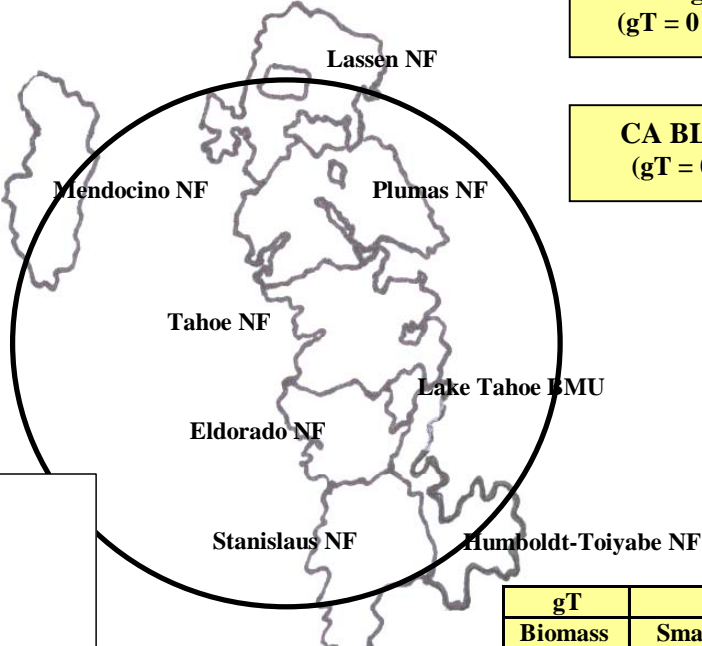
UC COF: 2 Forests - 3%
(gT = 62 / S = .042 / L = 3.034)

Boggs Mtn SF - 2%
(gT = 0 / S = .375 / L = 1.875)

Eldorado NF: 4 RDs - 81%
(gT = 143,375 / S = 38.35 / L = 11.775)

CA BLM: 2 FOs - <1%
(gT = 0 / S = .8 / L = .05)

Mendocino NF: 3 RDs - 13%
(gT = 8,745 / S = 1.354 / L = 9.075)



	gT	mmbf	
	Biomass	Small Log	Large Log
2007	32137.43	7.902432459	4.41356018
2008	28852.43	8.1809	4.63
2009	28852.43	8.1778006	4.6299604
2010	30352.43	8.7478006	6.0599604
2011	31987.43	7.9119006	6.0759604
Totals	152182.15	40.92083426	25.80944138
%	31%	42%	27%
mmbf	30.43643		

97.16670564

Tahoe Region: Incense Cedar CROP offering/removal '07 - '11
(gT = 81,497 / S = 39.684 mmbf / L = 36.999 mmbf)
(92.982 mmbf)

gT = green tons (up to 7" dbh)
 S = small log mmbf (>7"-12" dbh)
 L = large log mmbf (>12" dbh)

UC COF: 2 Forests - 1%
(gT = 62 / S = .106 / L = .871)

***Plumas NF: 3 RDs - 29%**
(gT = 9,336 / S = 11.191 / L = 14.272)
**A portion of volume may be removed but not available for public offering.*

Mendocino NF: 1 RD - <1%
(gT = 0 / S = 0 / L = .66)

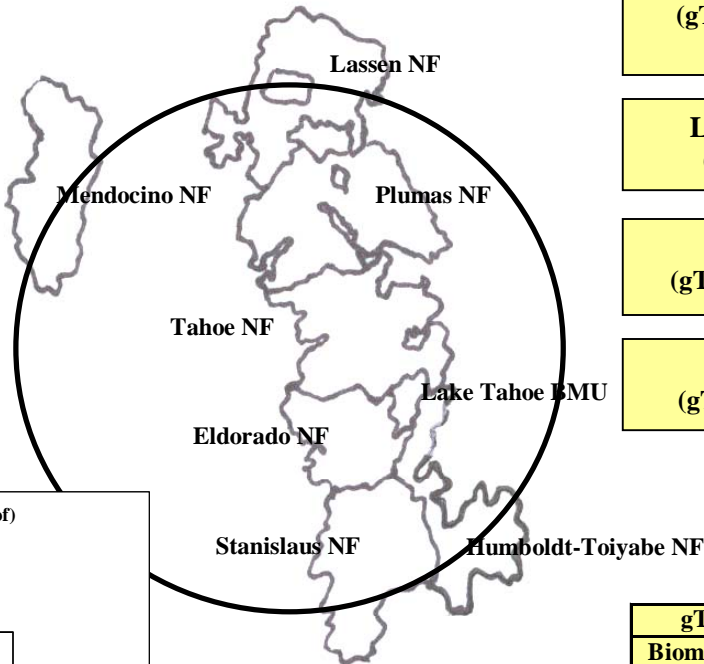
Eldorado NF: .4 RDs - 26%
(gT = 43,200 / S = 11.58 / L = 3.57)

***Lassen NF - 3%**
(gT = 0 / S = 1.541 / L = 1.028)
** No data available by RD.*

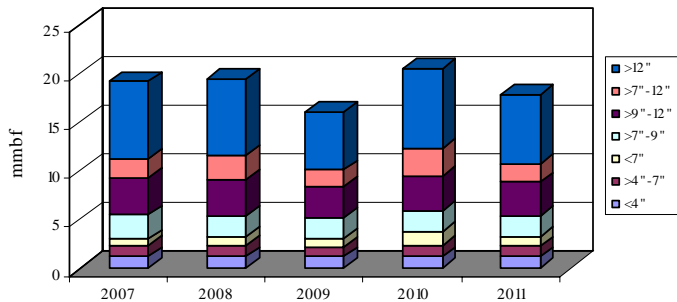
Lake Tahoe BMU - <1%
(gT = 0 / S = .15 / L = .35)

Stanislaus NF: 3 RDs - 29%
(gT = 24,094 / S = 10.711 / L = 11.564)

Tahoe NF: 3 RDs - 11%
(gT = 4,805 / S = 4.404 / L = 4.685)



All Agencies: Incense Cedar (5-yr total = 92.982 mmbf)
 16.299 mmbf is <7" = 81,497 gT of biomass
 39.684 mmbf is >7"-12" = small logs
 36.999 mmbf is >12" = large logs

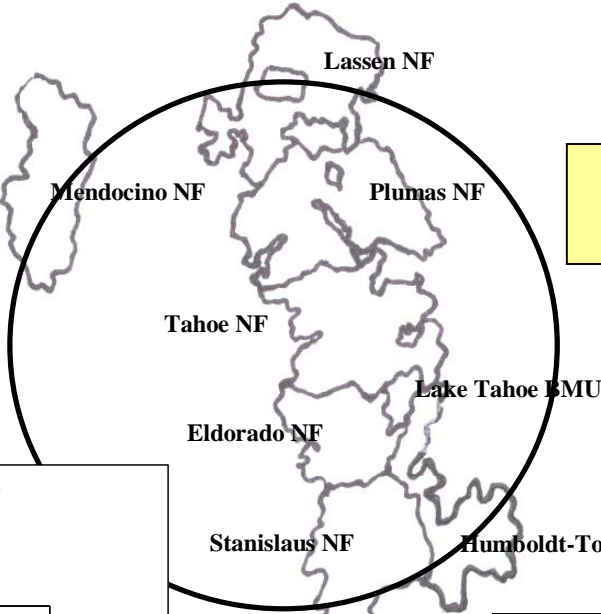


	gT	mmbf	
	Biomass	Small Log	Large Log
2007	14896.93	8.27362967	7.935861131
2008	16378.18	8.278075132	7.876550088
2009	15299.93	7.028355132	5.960797688
2010	18824.93	8.548255132	8.130397688
2011	16097.43	7.555355132	7.095797688
Totals	81497.4	39.6836702	36.99940428
%	18%	43%	40%
mmbf	16.29948		

92.98255448

Tahoe Region Red Fir CROP offering/removal '07 - '11
(gT = 37,818 / S = 34,974 mmbf / L = 27.826 mmbf)
(70.364 mmbf)

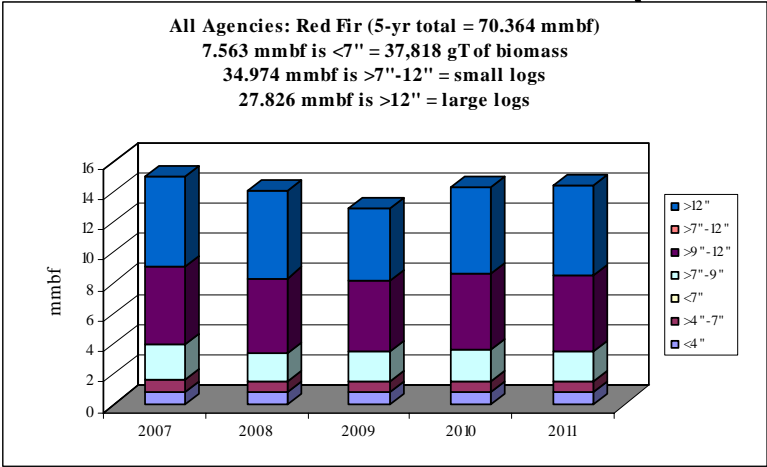
gT = green tons (up to 7" dbh)
 S = small log mmbf (>7"-12" dbh)
 L = large log mmbf (>12" dbh)



***Plumas NF: 3 RDs - 41%**
(gT = 9,718 / S = 11.758 / L = 15.033)
**A portion of volume may be removed but not available for public offering.*

***Lassen NF - 36%**
(gT = 0 / S = 15.416 / L = 10.277)
** No data available by RD.*

Eldorado NF: 4 RDs - 23%
(gT = 28,100 / S = 7.8 / L = 2.516)

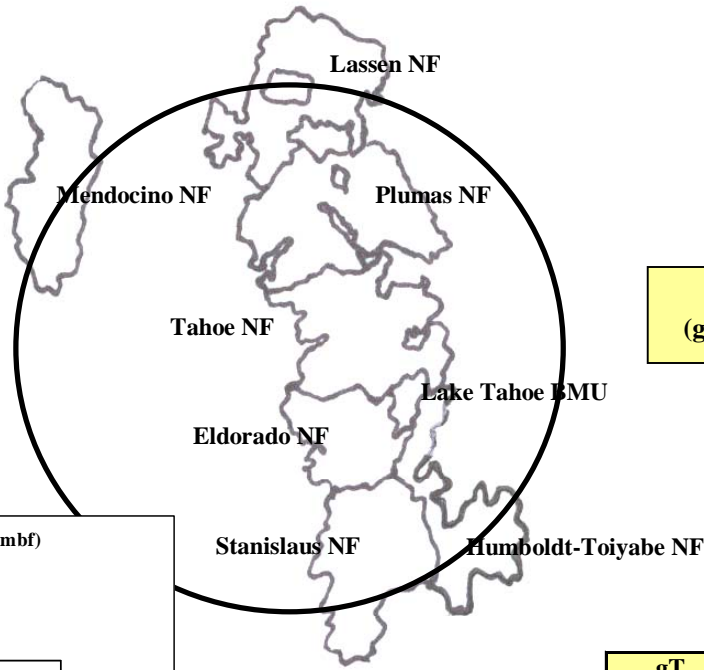


	gT	mmbf	
	Biomass	Small Log	Large Log
2007	7932.4	7.47575132	5.86610088
2008	7501.15	6.79150132	5.69160088
2009	7282.4	6.66325132	4.75110088
2010	7607.4	7.07075132	5.65110088
2011	7494.9	6.97325132	5.86610088
Totals	37818.25	34.9745066	27.8260044
%	11%	50%	40%
mmbf	7.56365		

70.364161

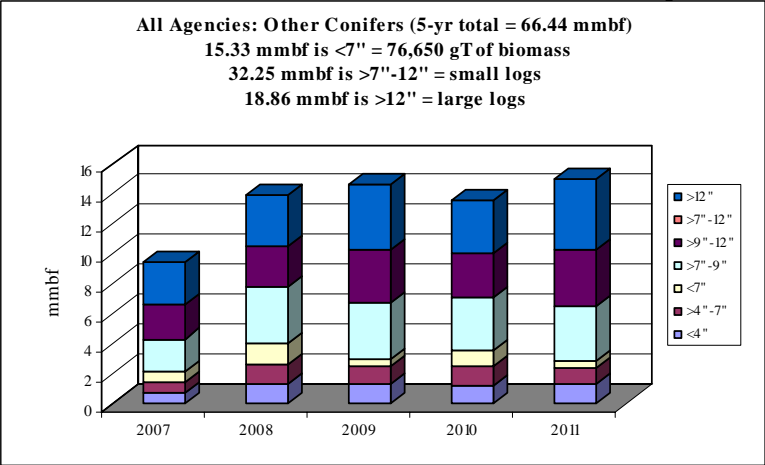
Tahoe Region: Other Conifers CROP offering/removal '07 – '11
(gT = 76,650 / S = 32.25 mmbf / L = 18.86 mmbf)
(66.44 mmbf)

gT = green tons (up to 7" dbh)
 S = small log mmbf (>7"-12" dbh)
 L = large log mmbf (>12" dbh)



Stanislaus NF: 3 RDs – 6%
(gT = 20,000 / S = 0 / L = 0)

Lake Tahoe BMU – 94%
(gT = 56,650 / S = 32.25 / L = 18.86)



	gT	mmbf	
	Biomass	Small Log	Large Log
2007	10550	4.45	2.82
2008	19750	6.55	3.4
2009	14750	7.33	4.37
2010	17550	6.45	3.56
2011	14050	7.47	4.71
Totals	76650	32.25	18.86
%	23%	49%	28%
mmbf	15.33		

66.44

Tahoe Region: Sugar Pine CROP offering/removal '07 - '11
(gT = 53,981 / S = 27.411 mmbf / L = 24.741 mmbf)
(62.949 mmbf)

gT = green tons (up to 7" dbh)
 S = small log mmbf (>7"-12" dbh)
 L = large log mmbf (>12" dbh)

***Plumas NF: 3 RDs -41%**
(gT = 9,387 / S = 10.527 / L = 13.305)
**A portion of volume may be removed but not available for public offering.*

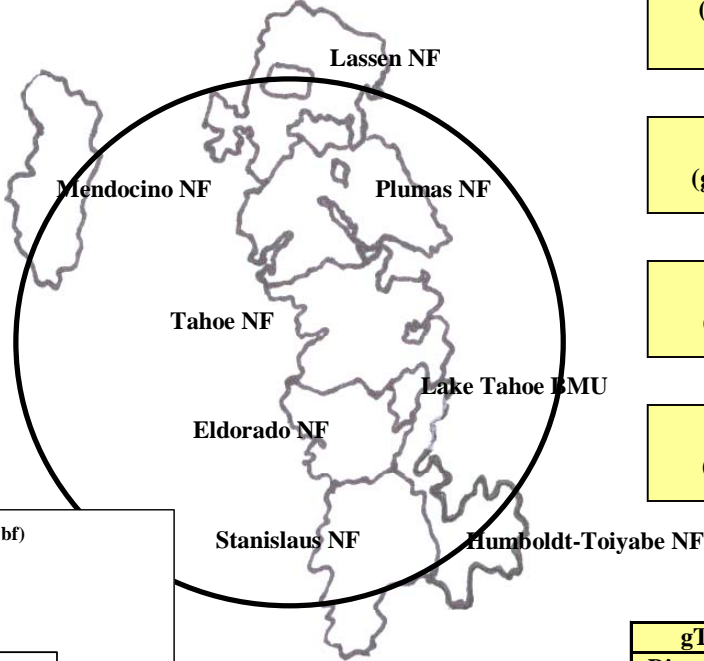
***Lassen NF - 4%**
(gT = 642 / S = 2.441 / L = 0)
** No data available by RD.*

Eldorado NF: 4 RDs -31%
(gT = 36,000 / S = 9.65 / L = 2.975)

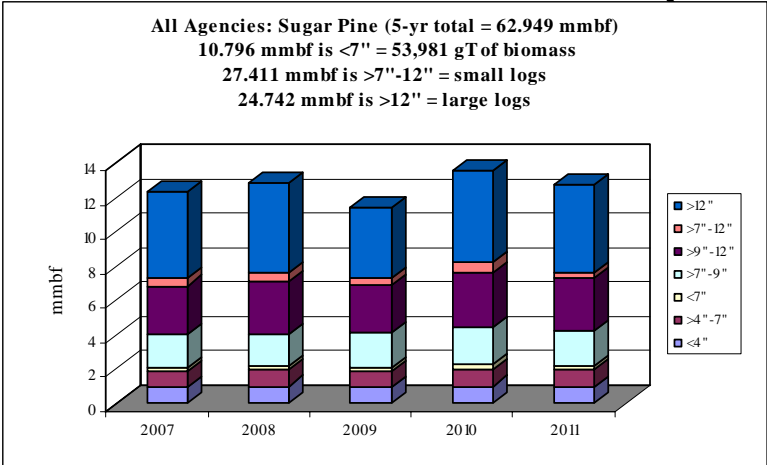
Tahoe NF: 4 RDs -9%
(gT = 2,728 / S = 2.4 / L = 2.529)

UC COF: 2 Forests - 1%
(gT = 62 / S = .019 / L = .813)

Stanislaus NF: 3 RDs -13%
(gT = 5,161 / S = 2.372 / L = 5.097)



Boggs Mtn. SF - <1%
(gT = 0 / S = .001 / L = .022)



	gT	mmbf	
	Biomass	Small Log	Large Log
2007	10234.149	5.304208426	4.995029459
2008	10826.149	5.473481459	5.21795
2009	10517.149	5.198418059	4.1041842
2010	11652.149	5.944718059	5.3123842
2011	10752.149	5.489918059	5.1121842
Totals	53981.744	27.41074406	24.74173206
%	17%	44%	39%
mmbf	10.796349		

62.94882493

Tahoe Region: Jeffrey Pine CROP offering/removal '07 – '11
(gT = 1,600 / S = 11.235 mmbf / L = 9.301 mmbf)
(20.856 mmbf)

gT = green tons (up to 7" dbh)
 S = small log mmbf (>7"-12" dbh)
 L = large log mmbf (>12" dbh)

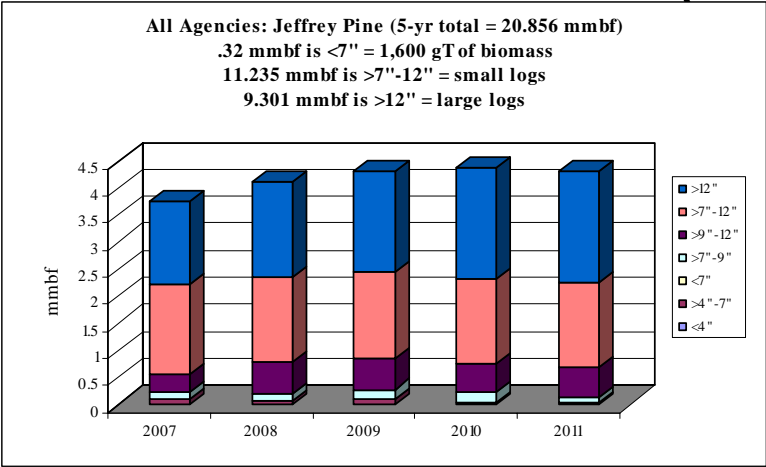
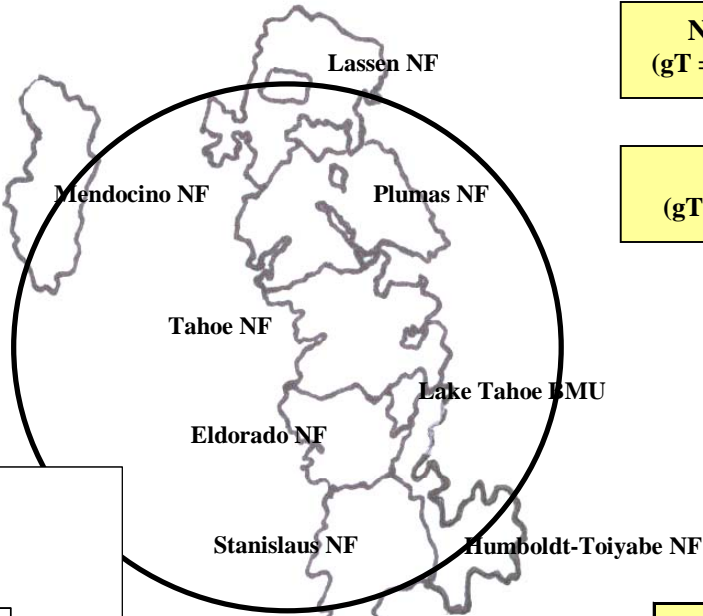
Humboldt-Toiyabe NF: 1 RD –55%
(gT = 0 / S = 7.96 / L = 3.457)

Lake Tahoe BMU – 24%
(gT = 0 / S = 1.5 / L = 3.51)

CA BLM: 1 FO – <1%
(gT = 0 / S = .04 / L = .01)

NV BLM – 5%
(gT = 0 / S = .7 / L = .3)

NV DOF-DSL – 16%
(gT = 1,600 / S = 1.035 / L = 2.024)



	gT	mmbf	
	Biomass	Small Log	Large Log
2007	500	2.11	1.55625
2008	250	2.3	1.7575
2009	550	2.325	1.86
2010	200	2.275	2.0575
2011	100	2.225	2.07
Totals	1600	11.235	9.30125
%	2%	54%	45%
mmbf	0.32		

20.85625

Tahoe Region: Lodgepole Pine CROP offering/removal '07 - '11
(gT = 2,570 / S = 13.009 mmbf / L = 4.888 mmbf)
(18.412 mmbf)

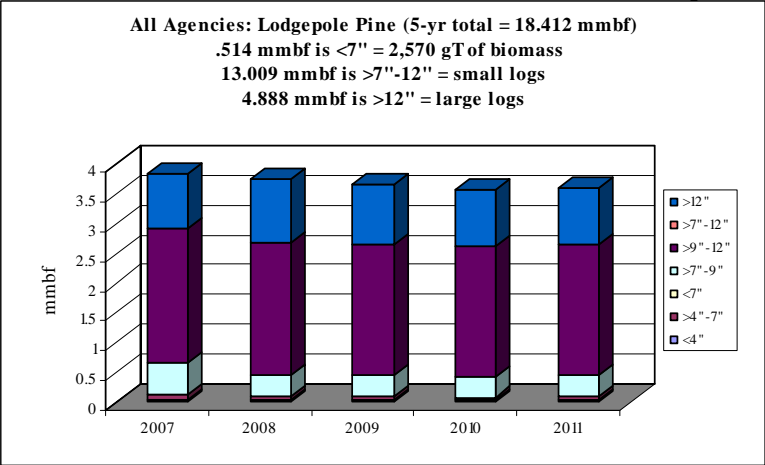
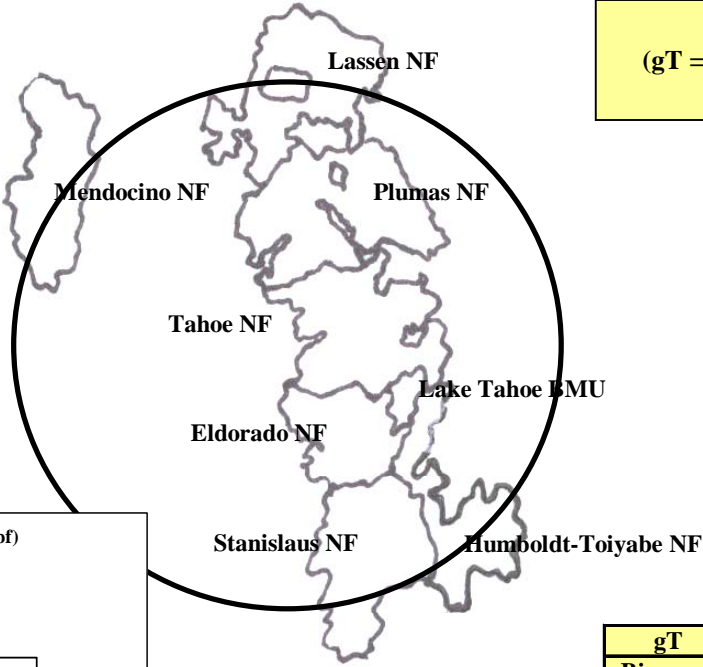
gT = green tons (up to 7" dbh)
 S = small log mmbf (>7"-12" dbh)
 L = large log mmbf (>12" dbh)

***Plumas NF: 3 RDs - 16%**
(gT = 2,320 / S = 1.18 / L = 1.311)
**A portion of volume may be removed but not available for public offering.*

***Lassen NF - 70%**
(gT = 0 / S = 10.919 / L = 1.927)
** No data available by RD.*

Lake Tahoe BMU - 11%
(gT = 0 / S = .59 / L = 1.42)

Tahoe NF: 2 RDs - 3%
(gT = 250 / S = .32 / L = .23)



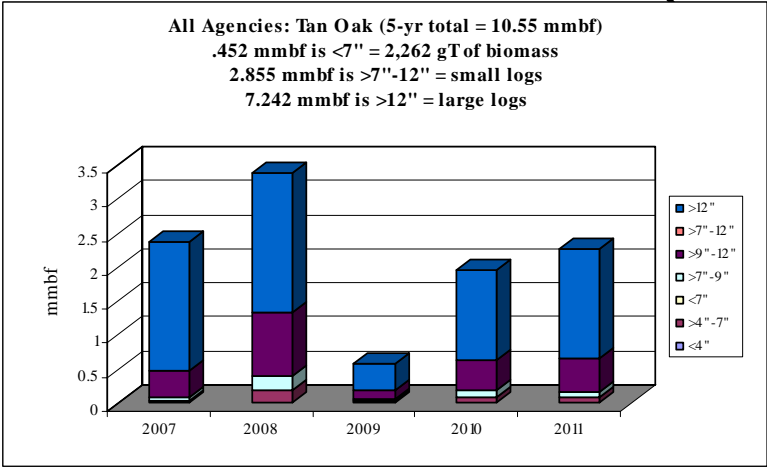
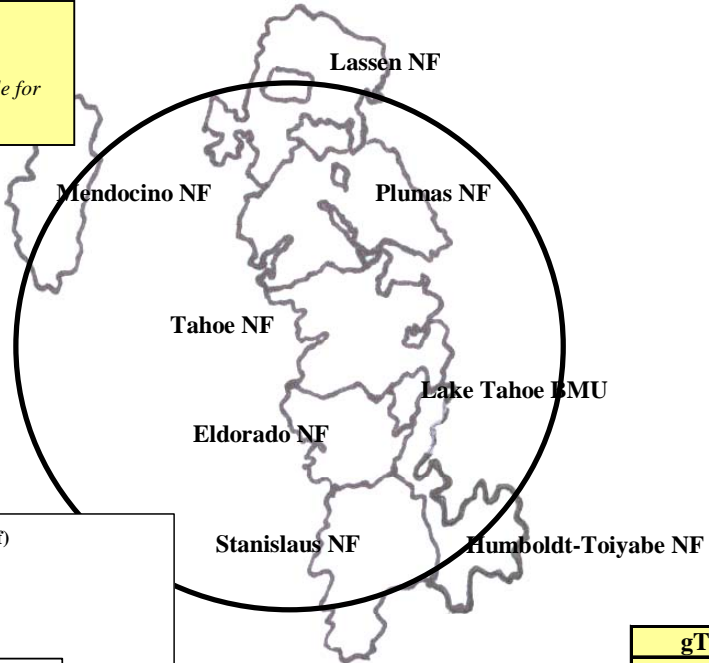
	gT	mmbf	
	Biomass	Small Log	Large Log
2007	717.5	2.783469685	0.912406415
2008	475	2.595769685	1.051606415
2009	467.5	2.560469685	0.997406415
2010	437.5	2.523469685	0.966406415
2011	472.5	2.546469685	0.960406415
Totals	2570	13.00964843	4.888232075
%	3%	71%	27%
mmbf	0.514		

18.4118805

Tahoe Region: Tan Oak CROP offering/removal '07 - '11
(gT = 2,262 / S = 2.855 mmbf / L = 7.242 mmbf)
(10.55 mmbf)

gT = green tons (up to 7" dbh)
 S = small log mmbf (>7"-12" dbh)
 L = large log mmbf (>12" dbh)

***Plumas NF: 1 RD - 100%**
(gT = 2,262 / S = 2.855 / L = 7.242)
**A portion of volume may be removed but not available for public offering.*



	gT	mmbf	
	Biomass	Small Log	Large Log
2007	225	0.4325	1.8875
2008	1012.5	1.135	2.0475
2009	137.5	0.155	0.3925
2010	450	0.555	1.3125
2011	437.5	0.5775	1.6025
Totals	2262.5	2.855	7.2425
%	4%	27%	69%
mmbf	0.4525		

10.55

Tahoe Region: Black Oak CROP offering/removal '07 - '11
(gT = 2,500 / S = 3.887 mmbf / L = .74 mmbf)
(5.127 mmbf)

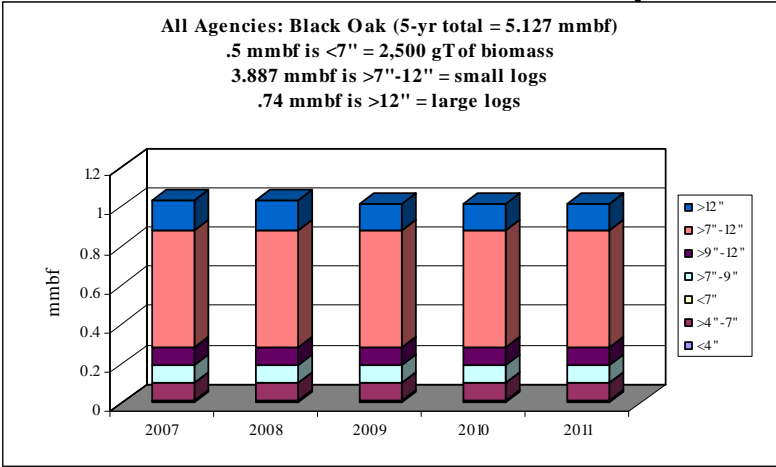
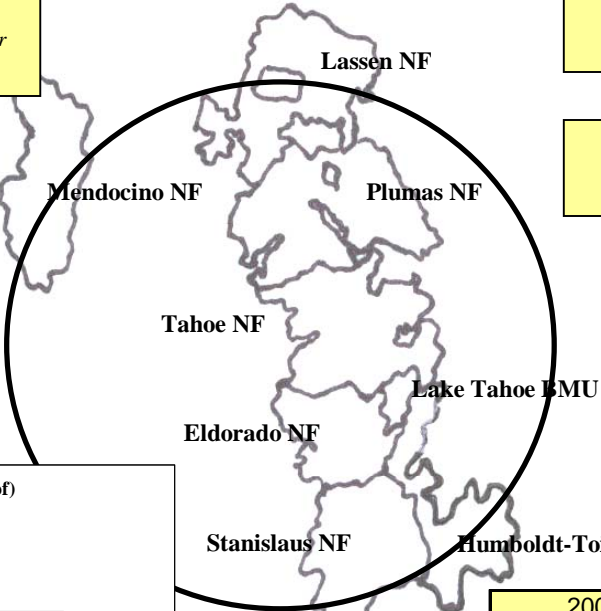
gT = green tons (up to 7" dbh)
 S = small log mmbf (>7"-12" dbh)
 L = large log mmbf (>12" dbh)

***Plumas NF: 2 RDs - 9%**
(gT = 625 / S = .187 / L = .175)
**A portion of volume may be removed but not available for public offering.*

Mendocino NF: 3 RDs - 58%
(gT = 0 / S = 2.95 / L = 0)

Eldorado NF: 4 RDs - 29%
(gT = 1,875 / S = .75 / L = .375)

UC COF: 1 Forest - 4%
(gT = 0 / S = 0 / L = .19)



	gT	mmbf	
	Biomass	Small Log	Large Log
2007	500	0.7775	0.16
2008	500	0.7775	0.16
2009	500	0.7775	0.14
2010	500	0.7775	0.14
2011	500	0.7775	0.14
Totals	2500	3.8875	0.74
%	10%	76%	14%
mmbf	0.5		

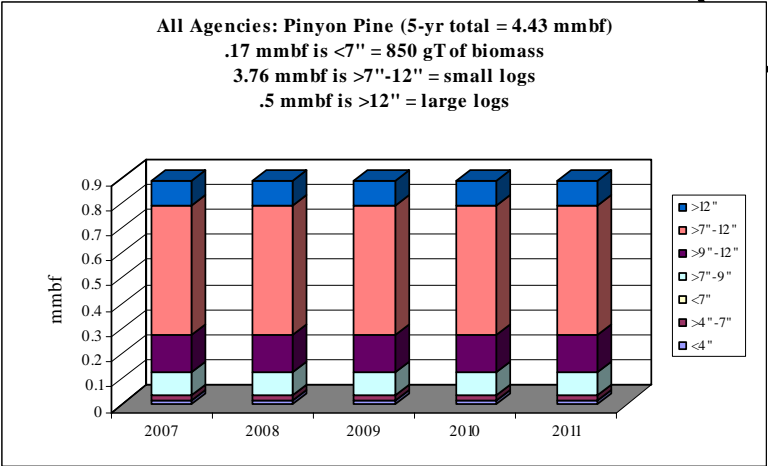
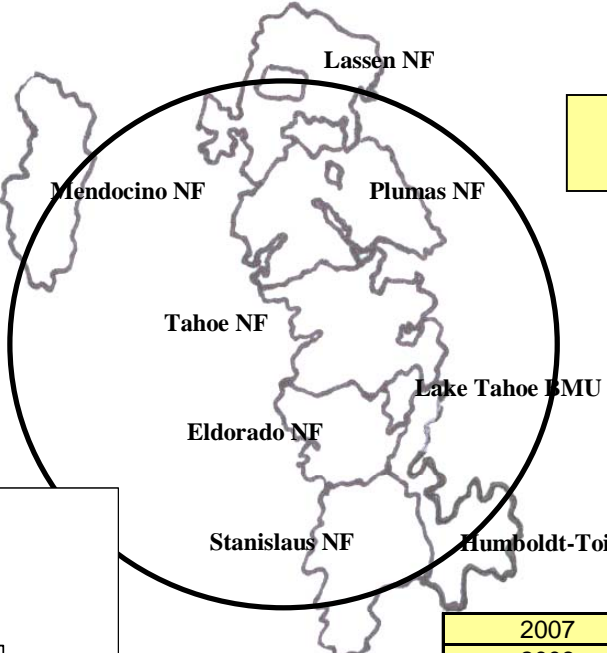
5.1275

Tahoe Region: *Pinyon Pine* CROP offering/removal '07 – '11
(gT = 850 / S = 3.76 mmbf / L = .5 mmbf)
(4.43 mmbf)

gT = green tons (up to 7" dbh)
 S = small log mmbf (>7"-12" dbh)
 L = large log mmbf (>12" dbh)

Humboldt-Toiyabe NF: 1 RD -58%
(gT = 0 / S = 2.55 / L = 0)

NV BLM - 42%
(gT = 850 / S = 1.21 / L = .5)



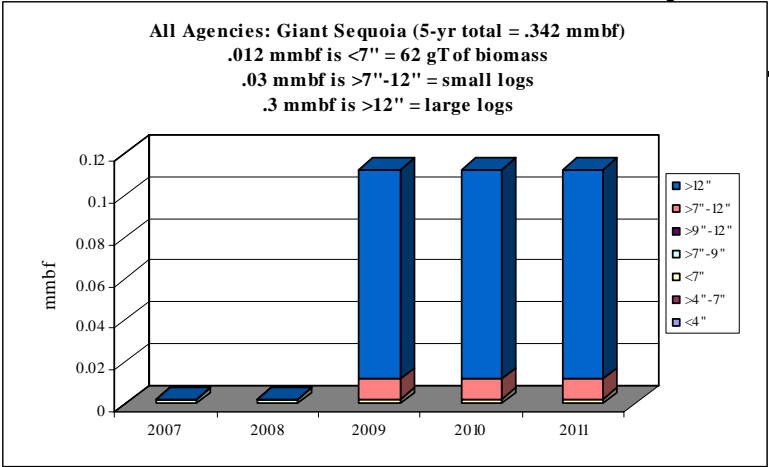
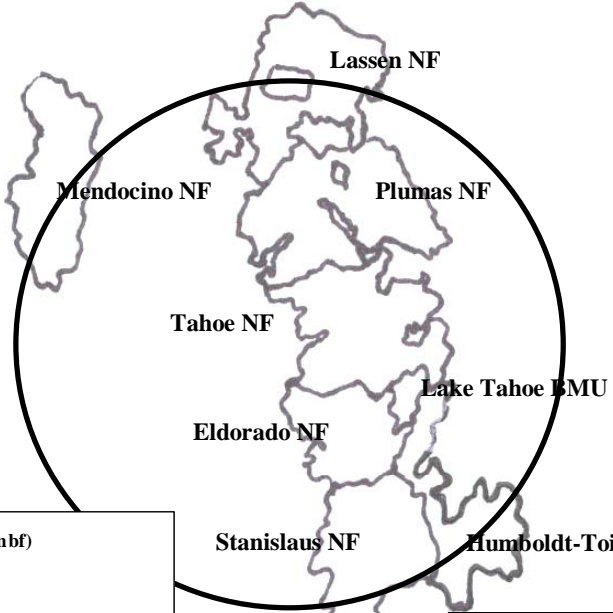
	gT	mmbf	
	Biomass	Small Log	Large Log
2007	170	0.752	0.1
2008	170	0.752	0.1
2009	170	0.752	0.1
2010	170	0.752	0.1
2011	170	0.752	0.1
Totals	850	3.76	0.5
%	4%	85%	11%
mmbf	0.17		

4.43

Tahoe Region: *Giant Sequoia* CROP offering/removal '07 - '11
(gT = 62 / S = .03 mmbf / L = .3 mmbf)
(.342 mmbf)

gT = green tons (up to 7" dbh)
 S = small log mmbf (>7"-12" dbh)
 L = large log mmbf (>12" dbh)

UC COF - 100%
(gT = 62 / S = .03 / L = .3)



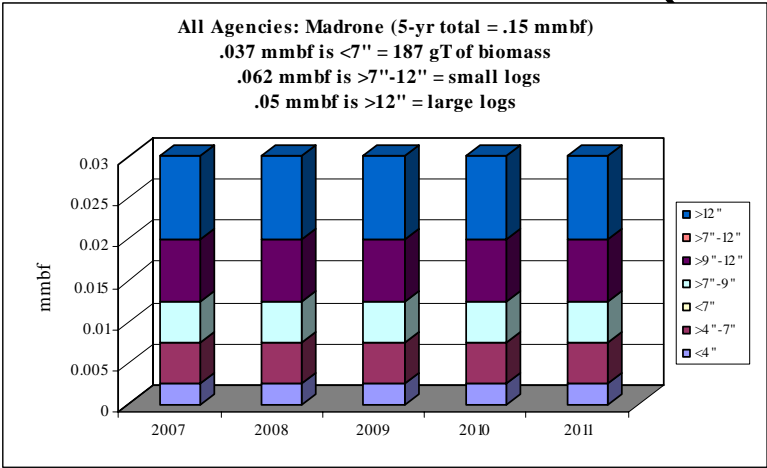
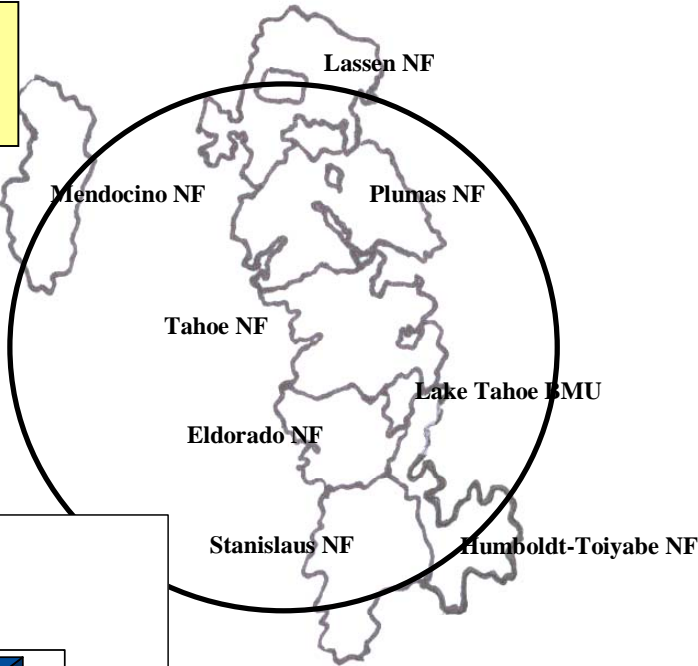
	gT	mmbf	
	Biomass	Small Log	Large Log
2007	12.43	0	0
2008	12.43	0	0
2009	12.43	0.01	0.1
2010	12.43	0.01	0.1
2011	12.43	0.01	0.1
Totals	62.15	0.03	0.3
%	4%	9%	88%
mmbf	0.01243		

0.34243

Tahoe Region: Madrone CROP offering/removal '07 - '11
(gT = 187 / S = .062 mmbf / L = .05 mmbf)
(.15 mmbf)

gT = green tons (up to 7" dbh)
 S = small log mmbf (>7"-12" dbh)
 L = large log mmbf (>12" dbh)

***Plumas NF: 1 RD - 100%**
(gT = 187 / S = .062 / L = .05)
**A portion of volume may be removed but not available for public offering.*



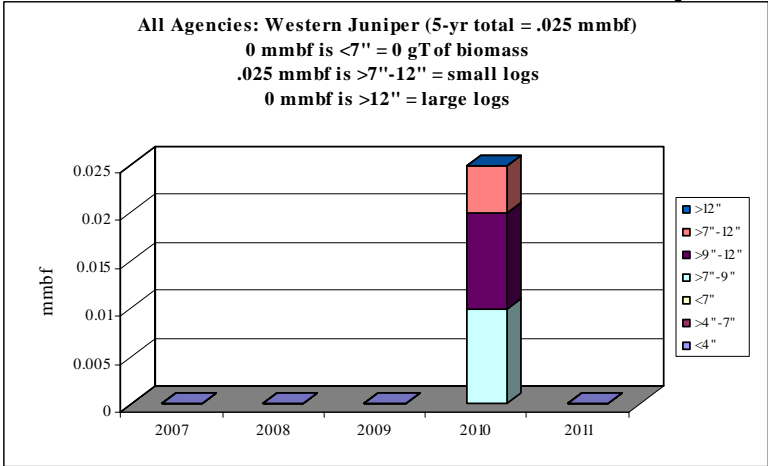
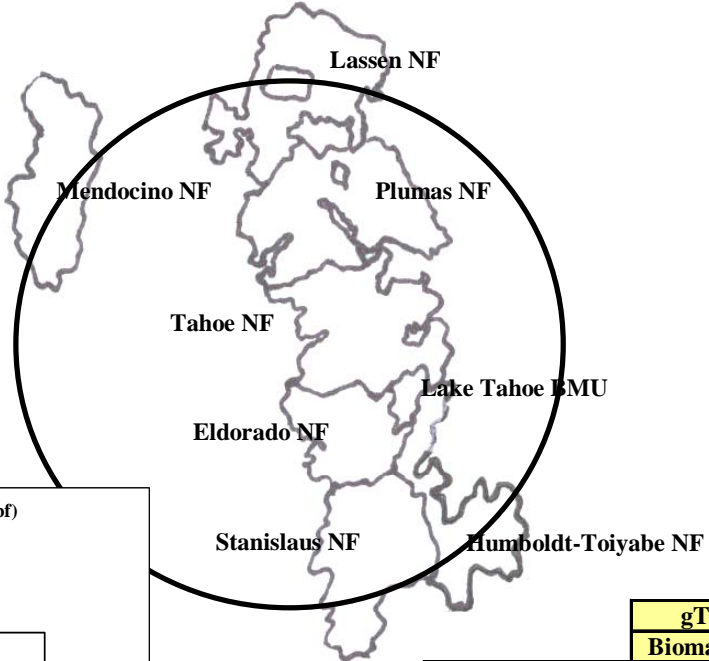
	gT	mmbf	
	Biomass	Small Log	Large Log
2007	37.5	0.0125	0.01
2008	37.5	0.0125	0.01
2009	37.5	0.0125	0.01
2010	37.5	0.0125	0.01
2011	37.5	0.0125	0.01
Totals	187.5	0.0625	0.05
%	25%	42%	33%
mmbf	0.0375		

0.15

Tahoe Region: Western Juniper CROP offering/removal '07 – '11
(gT = 0 / S = .025 mmbf / L = 0 mmbf)
(.025 mmbf)

gT = green tons (up to 7" dbh)
 S = small log mmbf (>7"-12" dbh)
 L = large log mmbf (>12" dbh)

CA BLM: 1 FO – 100%
(gT = 0 / S = .025 / L = 0)



	gT	mmbf	
	Biomass	Small Log	Large Log
2007	0	0	0
2008	0	0	0
2009	0	0	0
2010	0	0.025	0
2011	0	0	0
Totals	0	0.025	0
%	0%	100%	0%
mmbf	0		

0.025

Questions? Contact:

Edmund Gee:

Nat'l Woody Biomass Utilization Team Leader
Nat'l Partnership Coordinator USFS
Washington DC
tel: (202) 205-1787 fax: (202) 205-1045 cell: (202) 236-5153
E-mail: eagee@fs.fed.us

Catherine M. Mater:

President—Mater Limited
Senior Fellow – The Pinchot Institute for Conservation
Corvallis, Oregon; Washington, DC
tel: (541) 753-7335 fax: (541) 752-2952; cell: (541) 760-5526
E-mail: catherine@mater.com