

**Southern Oregon/Northern California CROP**

A Summary of CROP Landscape Analyses Results  
(2006 – 2010)



Southern Oregon/Northern California CROP:  
Center Point: Lakeview, OR  
100-mi. radius

- 4 National Forests
- 10 Ranger Districts
- 8 BLM Districts
- 9 Counties\*
- State Lands
- Private Lands
- (\*no removal planned)

gT = green tons (up to 7" dbh)  
S = small log mmbf (>7"-12" dbh)  
L = large log mmbf (>12" dbh)

<i>By Species</i>		<b>5-yr total (Biomass = gT)</b>	<b>5-yr total Small log (mmbf)</b>	<b>5-yr total Large log (mmbf)</b>
<b>Ponderosa pine</b>	(50% of 5-yr. total)	647,880	149.47	123.67
<b>White fir</b>	(25% of 5-yr. total)	262,355	58.06	89.045
<b>Jeffrey pine</b>	(1% of 5-yr. total)	33,309	2.06	3.114
<b>Juniper</b>	(5% of 5-yr. total)	38,350	19.88	12.77
<b>Douglas fir</b>	(1% of 5-yr. total)	12,953	3.89	2.13
<b>Lodgepole pine</b>	(14% of 5-yr. total)	173,325	42.37	38.125
<b>Incense cedar</b>	(1% of 5-yr. total)	2,500	1.36	2.495
<b>Knobcone pine</b>	(1% of 5-yr. Total)	2,500	1.75	2.5
<b>Sugar pine</b>	(<1% of 5-yr. Total)	2,500	1.025	.505
<b>Other conifers</b>	(2% of 5-yr. Total)	4,250	4.45	9.6

*Fremont-Winema NF: (gT= 555,953; Small log = 141.94 mmbf; Large log = 74.051 mmbf)*

Ranger Districts	5-yr total (Biomass = gT)	5-yr total Small log (mmbf)	5-yr total Large log (mmbf)
SE Zone (Lakeview-Bly)	165,120	20.56	37.44
NE Zone (Silver Lake-Paisley)	95,606	39.69	9.96
SW Zone (Chiloquin-Klamath)	125,360	42.9	13
NW Zone (Chemult)	169,866	38.79	13.65

*Klamath NF: (gT= 53,750; Small log = 36.15 mmbf; Large log = 16.8 mmbf)*

Ranger Districts	5-yr total (Biomass = gT)	5-yr total Small log (mmbf)	5-yr total Large log (mmbf)
Goosenest	53,750	36.15	16.8

*Shasta-Trinity NF: (gT= 48,750; Small log = 40 mmbf; Large log = 85 mmbf)*

Ranger Districts	5-yr total (Biomass = gT)	5-yr total Small log (mmbf)	5-yr total Large log (mmbf)
Mt Shasta McCloud Mgmt. Unit	48,750	40	85

*Modoc NF: (gT= 436,700; Small log = 21.85 mmbf; Large log = 45.901 mmbf)*

Ranger Districts	5-yr total (Biomass = gT)	5-yr total Small log (mmbf)	5-yr total Large log (mmbf)
Warner Mtn.	134,000	7.26	15.68
Devils Garden	96,700	5.33	11.17
Big Valley	183,000	6.35	13.55
Doublehead	23,000	2.9	5.49

*OR BLM: (gT= 79,270; Small log = 29.53 mmbf; Large log = 16.88 mmbf)*

Field Offices	5-yr total (Biomass = gT)	5-yr total Small log (mmbf)	5-yr total Large log (mmbf)
Burns	10,512	2.65	.629
Lakeview	68,758	26.88	16.25

*CA BLM: (gT= 5,150.7; Small log = 5.61 mmbf; Large log = 2.842 mmbf)*

Field Offices	5-yr total (Biomass = gT)	5-yr total Small log (mmbf)	5-yr total Large log (mmbf)
Eagles Lake	2,145	2.73	.0741
Alturas	2,740	2.59	1.96
Surprise	265.6	.29	.145

**Oregon: All Agencies CROP offering '06 - '10**  
**(gT = 1,179,925 / S = 284.317 mmbf / L = 283.949 mmbf)**

gT = green tons (up to 7" dbh)  
 S = small log mmbf (>7"-12" dbh)  
 L = large log mmbf (>12" dbh)

**Fremont-Winema NF: 4 Zones - 40%**  
**(gT = 555,953 / S = 141.94 / L = 74.05)**

**Klamath NF: 1 RD - 8%**  
**(gT = 53,750 / S = 36.15 / L = 16.8)**

**Shasta-Trinity NF: 1 RD - 17%**  
**(gT = 48,750 / S = 40 / L = 85)**

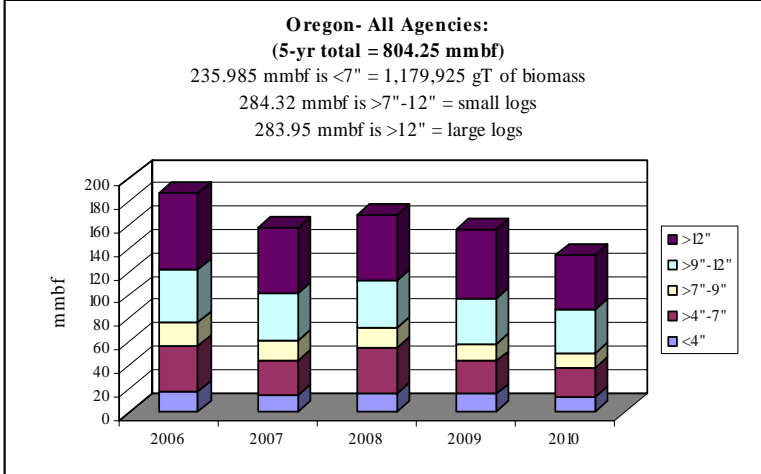
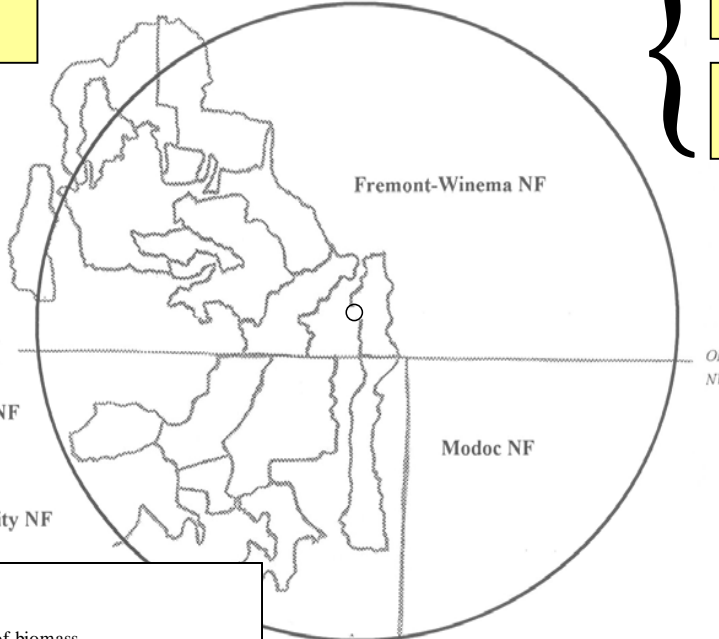
**OR-DOF: 4%**  
**(gT = 224 / S = 5.91 / L = 27.181)**

**CA-BLM: 3 districts - 1%**  
**(gT = 5,150 / S = 5.607 / L = 2.842)**

**OR-BLM: 2 districts - 9%**  
**(gT = 79,270 / S = 29.53 / L = 16.88)**

**OR-DSL: 2%**  
**(gT = 126 / S = 3.325 / L = 15.29)**

**Modoc NF: 4 RDs - 19%**  
**(gT = 436,700 / S = 21.845 / L = 45.9)**

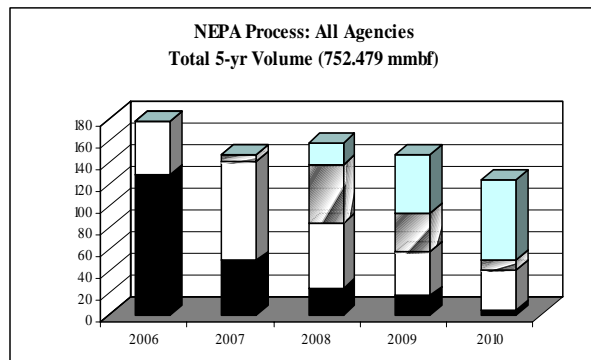
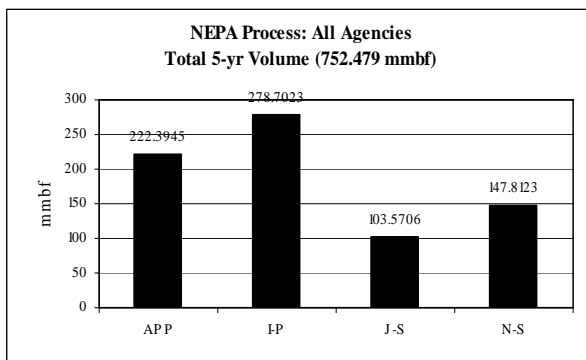


	gT	mmbf	
	Biomass	Small Log	Large Log
2006	285125.5102	64.292574	66.64043223
2007	220737.2339	57.27669064	55.61689684
2008	270861.4812	58.48988663	55.78514069
2009	215030.0886	54.33014315	59.21929954
2010	188170.3815	49.92775859	46.68697723
Totals	1179924.695	284.3170527	283.9487465
%	29%	35%	35%
mmbf	235.9849391		

**804.2507383**

**Southern Oregon/Northern California NEPA Process – All Agencies:**  
 Total 5-yr volume (752.479 mmbf; includes gT as mmbf)

	<i>mmbf</i>	<i>% of total</i>
<i>Approved (APP)</i>	<b>222.39</b>	<b>29%</b>
<i>In process (I-P)</i>	<b>278.702</b>	<b>37%</b>
<i>Just started (J-S)</i>	<b>103.57</b>	<b>14%</b>
<i>Not started (N-S)</i>	<b>147.812</b>	<b>20%</b>



**Oregon: All Agencies CROP offering '06 – '10**  
**(gT = 1,179,925 / S = 284.317 mmbf / L = 283.949 mmbf)**

**BLM:**

- A Eagle Lake District (CA) (3.9 mmbf)\*
- B Alturas District (CA) (5.09 mmbf)
- C Surprise District (CA) (.488 mmbf)
- D Burns District (OR) (5.381 mmbf)
- E Lakeview District (OR) (56.89 mmbf)

**OR - DOF:**

- F DOF (33.136 mmbf)

**Fremont-Winema NF:**

- G SE Zone–Lakeview/Bly RDs (91.02 mmbf)
- H NE Zone–Silver Lake/Paisley RDs (68.78 mmbf)
- I SW Zone–Chiloquin/Klamath RDs (80.97 mmbf)
- J NW Zone–Chemult RD (86.42 mmbf)

**Shasta-Trinity NF:**

- K Mt. Shasta-McCloud Mgt. Unit (134.75 mmbf)

**Modoc NF:**

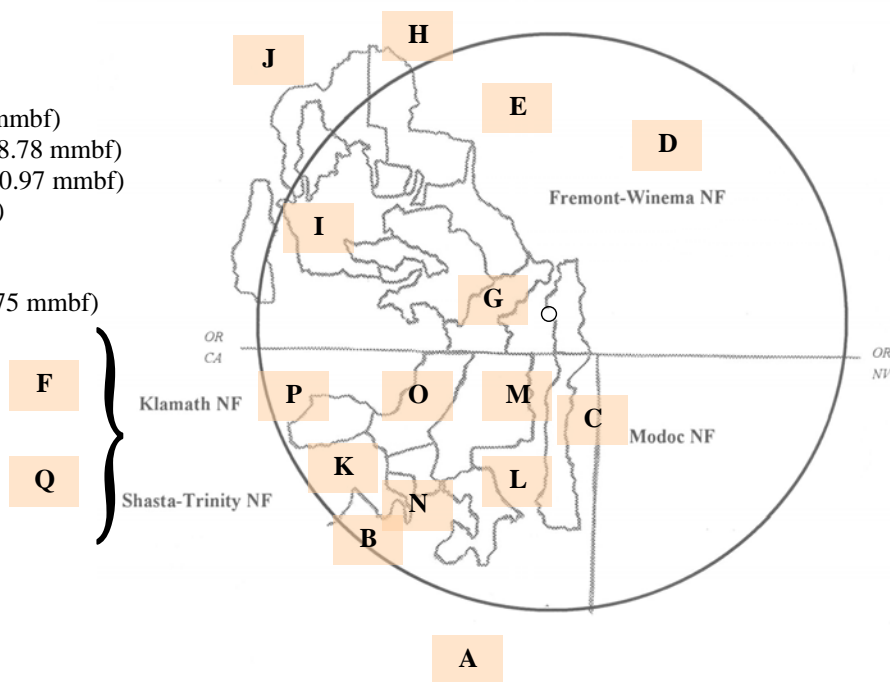
- L Warner Mtn. RD (49.75 mmbf)
- M Devils Garden RD (35.84 mmbf)
- N Big Valley RD (56.5 mmbf)
- O Doublehead RD (13 mmbf)

**Klamath NF:**

- P Goosenest RD (63.7 mmbf)

**OR - DSL:**

- Q DSL (18.639 mmbf)



\* 5-yr volume offering

**Oregon: Ponderosa Pine CROP offering/removal '06 - '10**  
**(gT = 647,880 / S = 149.47 mmbf / L = 123.67 mmbf)**

gT = green tons (up to 7" dbh)  
 S = small log mmbf (>7"-12" dbh)  
 L = large log mmbf (>12" dbh)

**Fremont-Winema NF: 4 Zones – 49%**  
**(gT = 275,342 / S = 96.2 / L = 47.63)**

**Klamath NF: 1 RD – 10%**  
**(gT = 38,787 / S = 21.86 / L = 8.645)**

**Shasta-Trinity NF: 1 RD – 11%**  
**(gT = 13,875 / S = 12.175 / L = 29.4)**

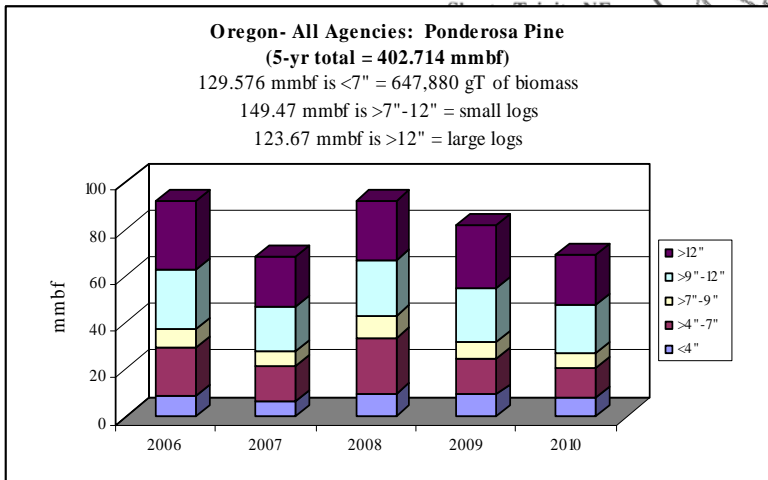
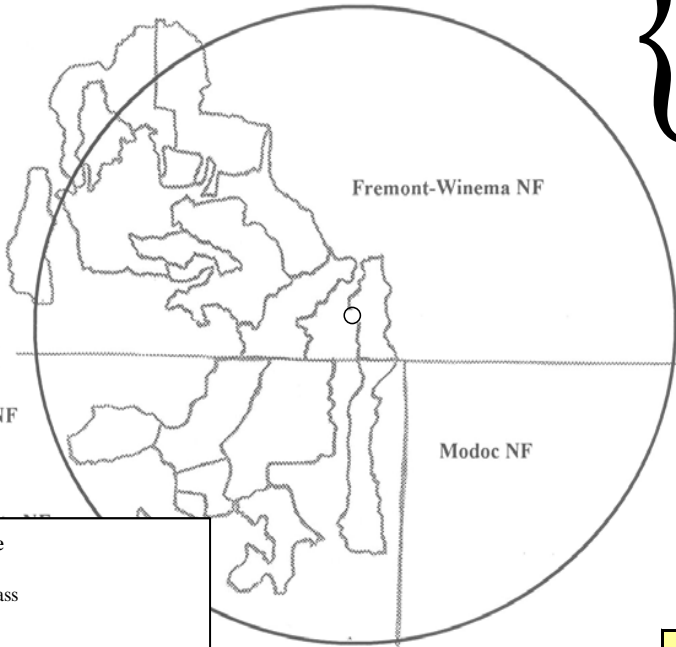
**Modoc NF: 4 RDs – 24%**  
**(gT = 293,994 / S = 11.168 / L = 26.06)**

**CA-BLM: 2 districts – <1%**  
**(gT = 854.6 / S = .944 / L = .641)**

**OR-BLM: 1 district – 3%**  
**(gT = 24,852 / S = 4.014 / L = 2.334)**

**OR-DSL: 1%**  
**(gT = 63 / S = 1.118 / L = 3.224)**

**OR-DOF: 2%**  
**(gT = 112 / S = 1.987 / L = 5.731)**



	gT	mmbf	
	Biomass	Small Log	Large Log
2006	145109.6253	33.562701	29.22803
2007	107579.185	25.608053	21.359494
2008	168476.42	33.019984	25.493404
2009	123149.516	30.273234	26.465154
2010	103565.516	27.006234	21.122154
<b>Totals</b>	<b>647880.2623</b>	<b>149.470206</b>	<b>123.668236</b>
<b>%</b>	<b>32%</b>	<b>37%</b>	<b>31%</b>
<b>mmbf</b>	<b>129.5760525</b>		

**402.7144945**

**Oregon: White Fir CROP offering '06 - '10**  
**(gT = 262,355 / S = 58.058 mmbf / L = 89.045 mmbf)**

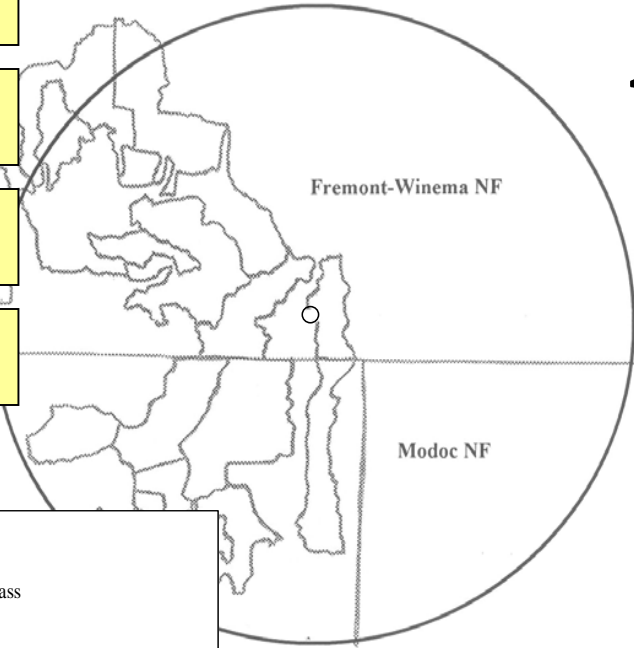
gT = green tons (up to 7" dbh)  
 S = small log mmbf (>7"-12" dbh)  
 L = large log mmbf (>12" dbh)

**Fremont-Winema NF: 4 Zones - 32%**  
**(gT = 120,586 / S = 20.575 / L = 18.173)**

**Klamath NF: 1 RD - 11%**  
**(gT = 8,762 / S = 13.047 / L = 7.735)**

**Shasta-Trinity NF: 1 RD - 11%**  
**(gT = 7,500 / S = 5.5 / L = 15)**

**OR-DOF: 9%**  
**(gT = 0 / S = .9 / L = 17.91)**

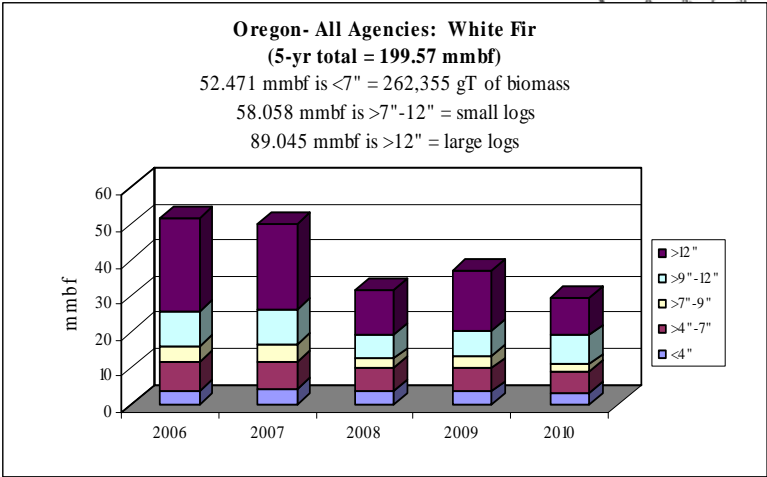


**CA-BLM: 1 district - <1%**  
**(gT = 0 / S = .862 / L = .862)**

**OR-BLM: 1 district - 14%**  
**(gT = 27,466 / S = 12.832 / L = 10.34)**

**OR-DSL: 5%**  
**(gT = 0 / S = .506 / L = 10.075)**

**Modoc NF: 4 RDs - 16%**  
**(gT = 98,040 / S = 3.835 / L = 8.949)**



	gT	mmbf	
	Biomass	Small Log	Large Log
2006	59448.7167	13.930394	25.66149
2007	58095.99	14.585182	23.740662
2008	51041.11	9.130172	12.278572
2009	49064.862	10.422272	16.903472
2010	44704.862	9.989772	10.460972
<b>Totals</b>	<b>262355.5407</b>	<b>58.057792</b>	<b>89.045168</b>
<b>%</b>	<b>26%</b>	<b>29%</b>	<b>45%</b>
<b>mmbf</b>	<b>52.47110814</b>		

199.5740681



**Oregon: Lodgepole Pine CROP offering '06 - '10**  
**(gT = 173,325 / S = 42.37 mmbf / L = 38.125 mmbf)**

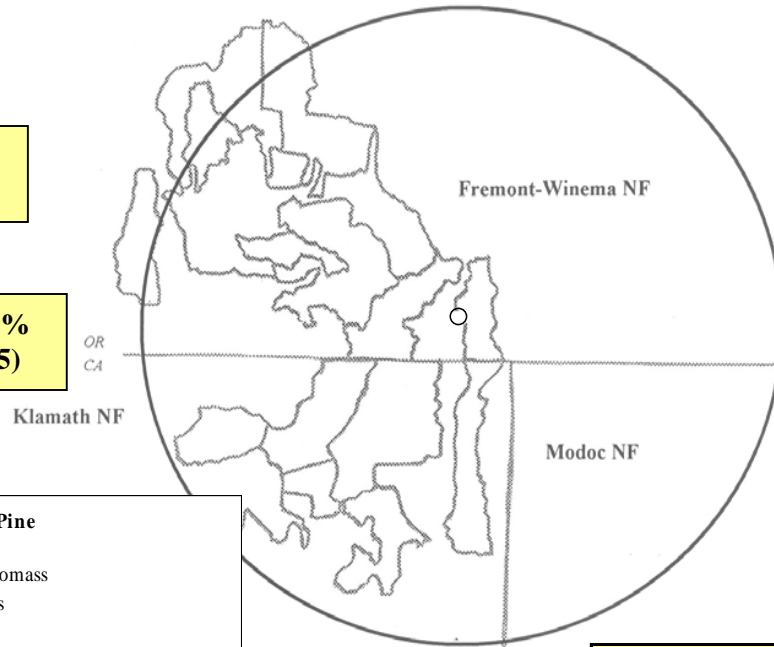
gT = green tons (up to 7" dbh)  
 S = small log mmbf (>7"-12" dbh)  
 L = large log mmbf (>12" dbh)

**Shasta-Trinity NF: 1 RD - 37%**  
**(gT = 13,125 / S = 12.875 / L = 26.5)**

**OR-DSL: 2%**  
**(gT = 63 / S = 1.557 / L = 1.217)**

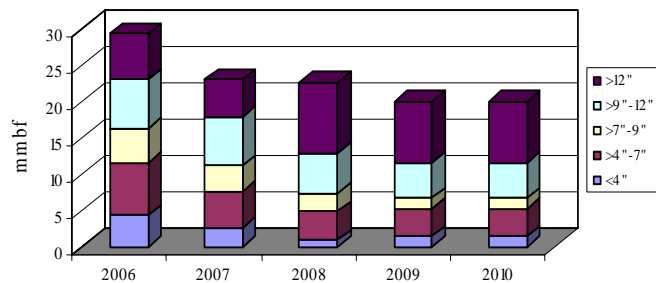
**Fremont-Winema NF: 4 Zones - 57%**  
**(gT = 160,025 / S = 25.17 / L = 8.245)**

**OR-DOF: 4%**  
**(gT = 112 / S = 2.768 / L = 2.163)**



**Oregon- All Agencies: Lodgepole Pine**  
**(5-yr total = 115.16 mmbf)**

34.665 mmbf is <7" = 173,325 gT of biomass  
 42.37 mmbf is >7"-12" = small logs  
 38.125 mmbf is >12" = large logs



	gT	mmbf	
	Biomass	Small Log	Large Log
2006	58279.4068	11.413520	6.32408
2007	38092.2185	10.287424	5.151824
2008	24265.9185	7.994424	9.779824
2009	26343.7785	6.337369	8.434579
2010	26343.7785	6.337369	8.434579
Totals	173325.1008	42.370106	38.124886
%	30%	37%	33%
mmbf	34.66502016		

**115.1600122**

**Oregon: Juniper CROP offering '06 - '10**  
**(gT = 38,350 / S = 19.883 mmbf / L = 12.766 mmbf)**

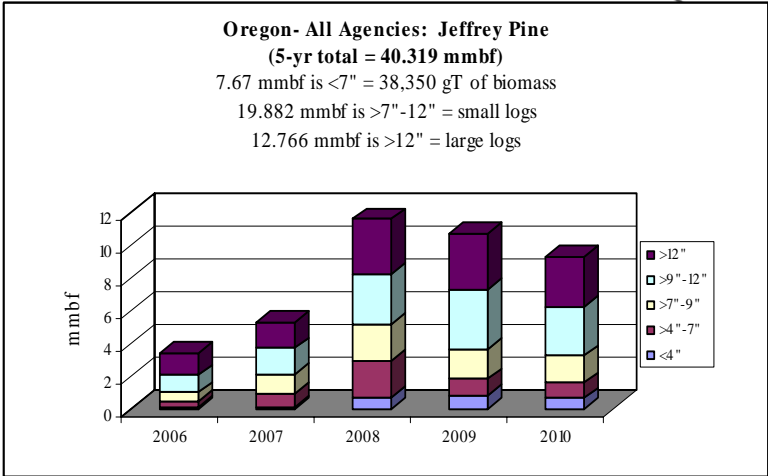
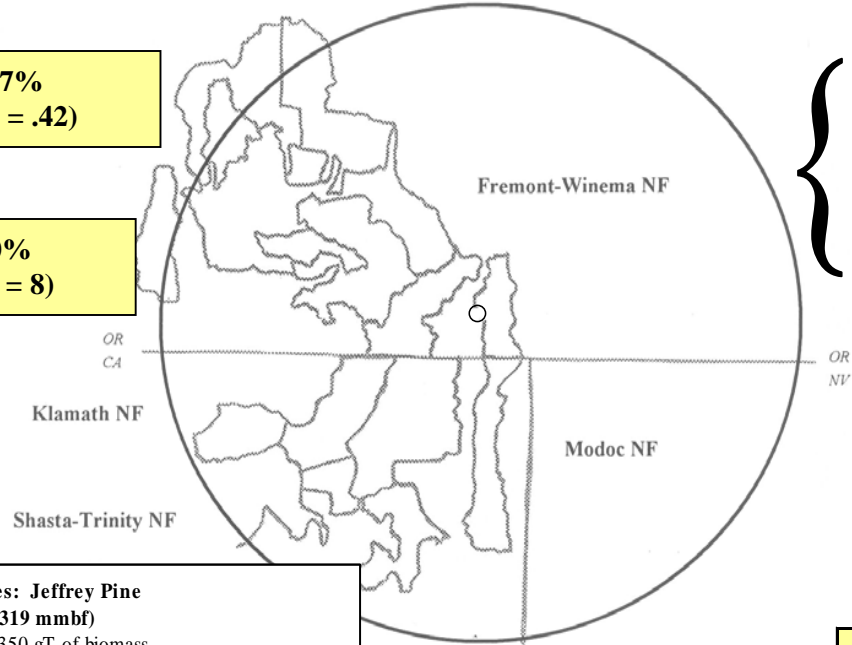
gT = green tons (up to 7" dbh)  
 S = small log mmbf (>7"-12" dbh)  
 L = large log mmbf (>12" dbh)

**Klamath NF: 1 RD - 7%**  
**(gT = 6,200 / S = 1.24 / L = .42)**

**Modoc NF: 4 RDs - 40%**  
**(gT = 12,000 / S = 5.6 / L = 8)**

**CA-BLM: 3 districts - 12%**  
**(gT = 3,652 / S = 2.98 / L = 1.116)**

**OR-BLM: 2 districts - 41%**  
**(gT = 16,498 / S = 10.061 / L = 3.23)**

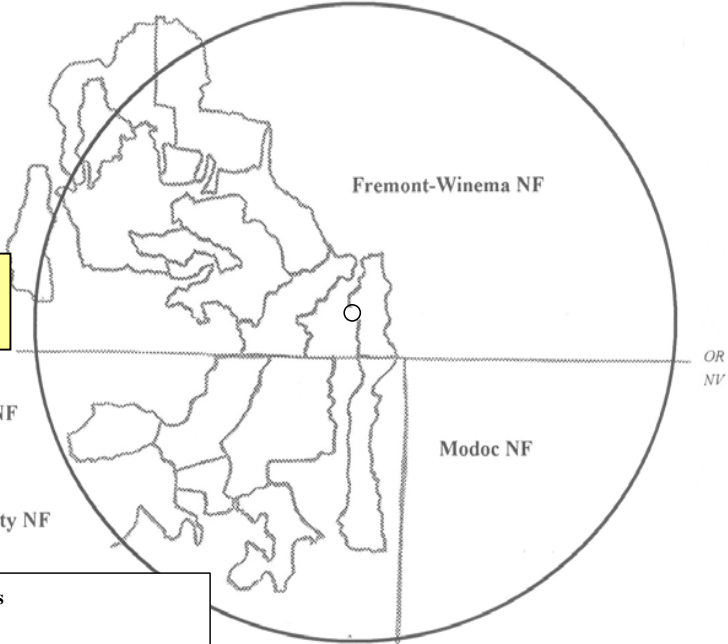


	gT	mmbf	
	Biomass	Small Log	Large Log
2006	2185.661485	1.614090	1.323442227
2007	4595.1404	2.765106635	1.603826838
2008	14719.3327	5.305006625	3.358380688
2009	8983.232145	5.527968154	3.402134535
2010	7867.525	4.670583593	3.078812227
Totals	38350.89173	19.88275472	12.76659652
%	19%	49%	32%
mmbf	7.670178346		

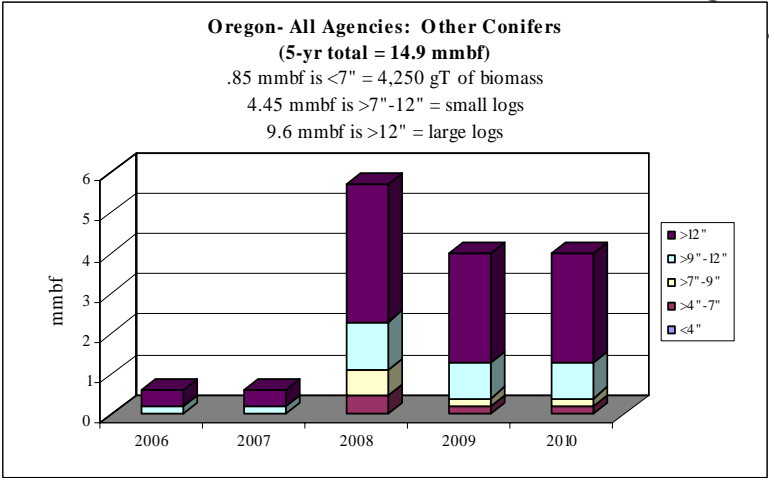
**40.31952958**

**Oregon: Other Conifers CROP offering '06 – '10**  
**(gT = 4,250 / S = 4.45 mmbf / L = 9.6 mmbf)**

gT = green tons (up to 7" dbh)  
 S = small log mmbf (>7"-12" dbh)  
 L = large log mmbf (>12" dbh)



**Shasta-Trinity NF: 1 RD – 100%**  
**(gT = 4,250 / S = 4.45 / L = 9.6)**



	gT	mmbf	
	Biomass	Small Log	Large Log
2006	0	0.200000	0.4
2007	0	0.2	0.4
2008	2250	1.85	3.4
2009	1000	1.1	2.7
2010	1000	1.1	2.7
Totals	4250	4.45	9.6
%	6%	30%	64%
mmbf	0.85		

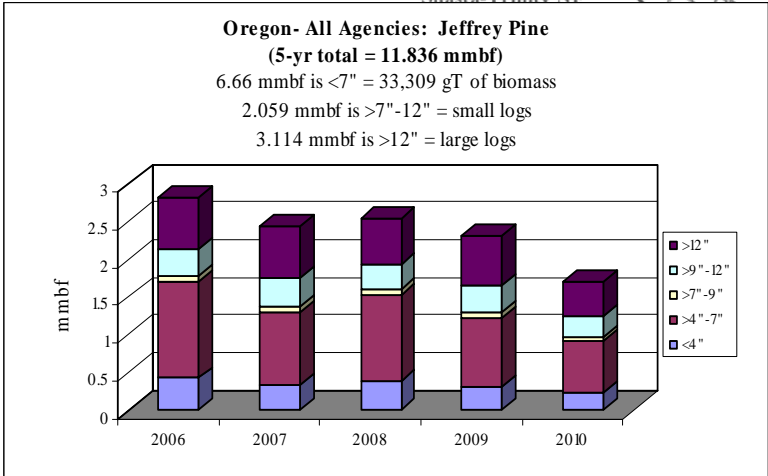
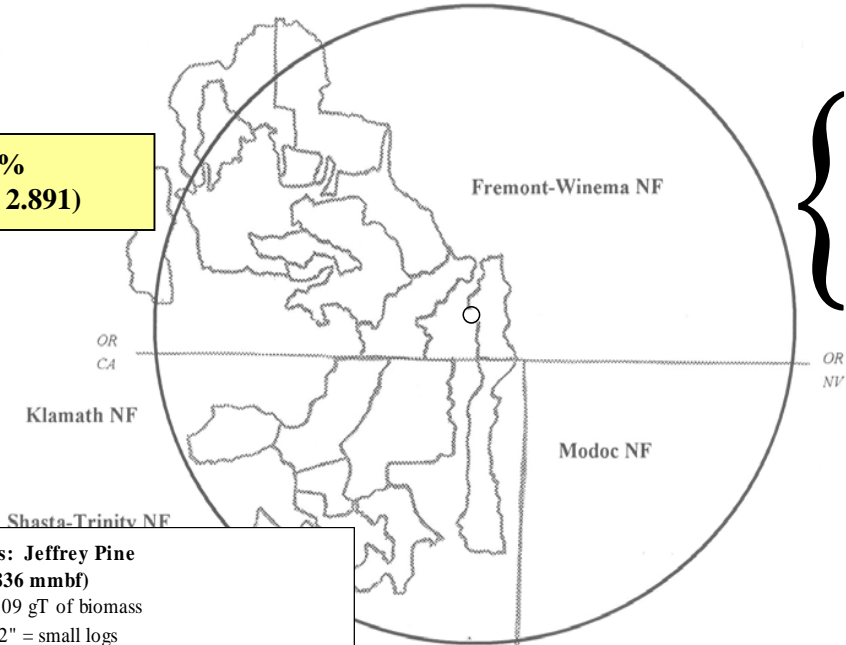
14.9

**Oregon: Jeffrey Pine CROP offering '06 - '10**  
**(gT = 33,309 / S = 2.06 mmbf / L = 3.114 mmbf)**

gT = green tons (up to 7" dbh)  
 S = small log mmbf (>7"-12" dbh)  
 L = large log mmbf (>12" dbh)

**Modoc NF: 4 RDs - 90%**  
**(gT = 32.666 / S = 1.24 / L = 2.891)**

**CA-BLM: 1 district - 10%**  
**(gT = 643 / S = .819 / L = .2223)**

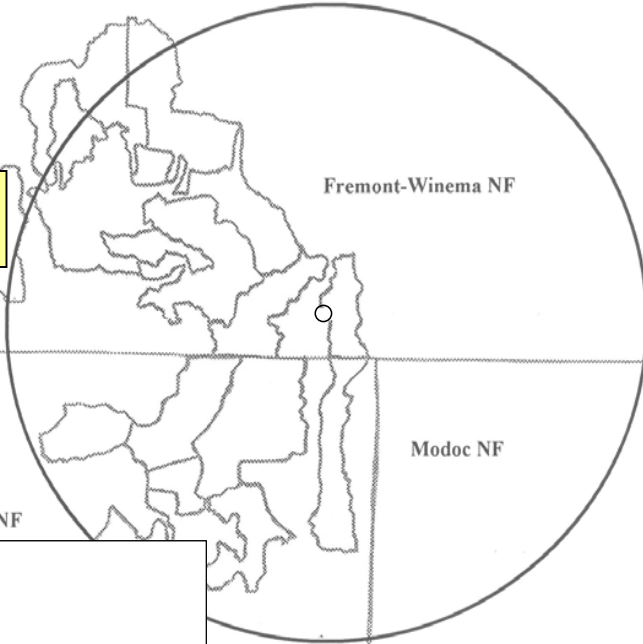


	gT	mmbf	
	Biomass	Small Log	Large Log
2006	8494.7	0.437625	0.68339
2007	6528.7	0.440925	0.69109
2008	7628.7	0.4083	0.61496
2009	6128.7	0.4293	0.66396
2010	4528.7	0.3438	0.46046
Totals	33309.5	2.05995	3.11386
%	56%	17%	26%
mmbf	6.6619		

**11.83571**

**Oregon: Douglas Fir CROP offering '06 – '10  
(gT = 12,953 / S = 3.891 mmbf / L = 2.13 mmbf)**

gT = green tons (up to 7" dbh)  
S = small log mmbf (>7"-12" dbh)  
L = large log mmbf (>12" dbh)

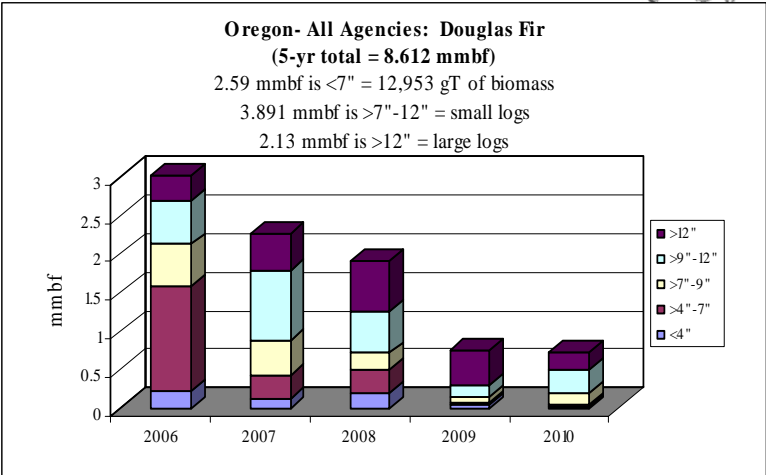


**Shasta-Trinity NF: 1 RD – 17%  
(gT = 2,500 / S = 1 / L = 0)**

**OR-BLM: 1 district – 66%  
(gT = 10,453 / S = 2.626 / L = .98)**

**OR-DSL: 6%  
(gT = 0 / S = .095 / L = .414)**

**OR-DOF: 11%  
(gT = 0 / S = .17 / L = .736)**



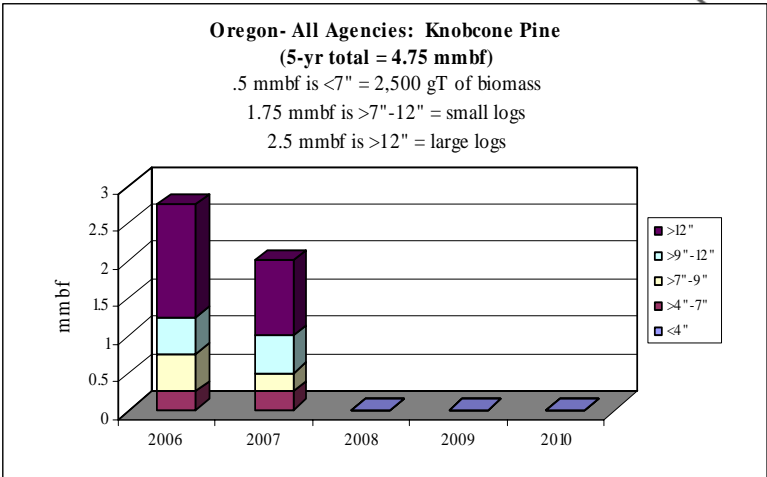
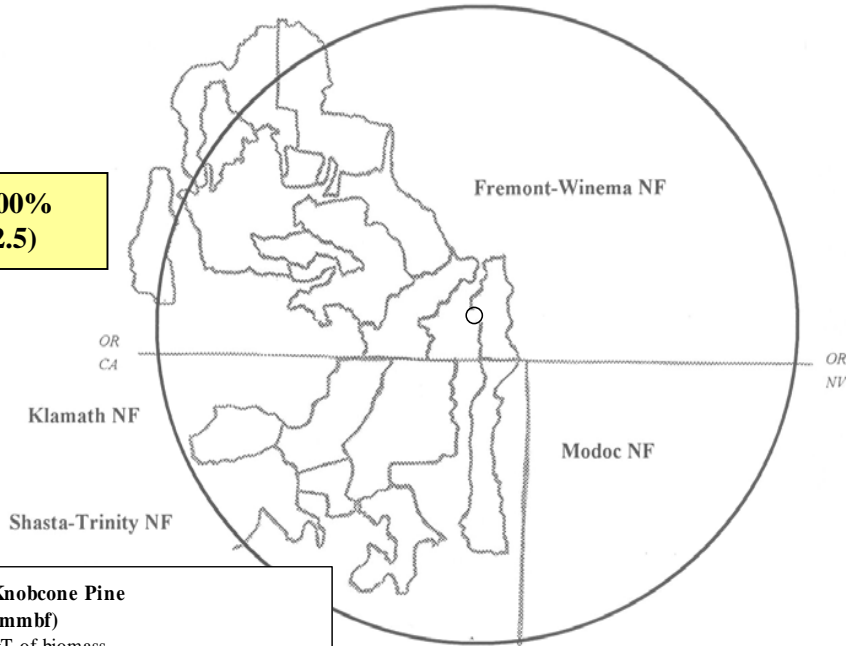
	mmbf		
	gT Biomass	Small Log	Large Log
2006	7857.4	1.107244	0.32
2007	2096	1.363	0.47
2008	2480	0.755	0.66
2009	360	0.213	0.45
2010	160	0.453	0.23
<b>Totals</b>	<b>12953.4</b>	<b>3.891244</b>	<b>2.13</b>
<b>%</b>	<b>30%</b>	<b>45%</b>	<b>25%</b>
<b>mmbf</b>	<b>2.59068</b>		

**8.611924**

**Oregon: Knobcone Pine CROP offering '06 - '10**  
**(gT = 2,500 / S = 1.75 mmbf / L = 2.5 mmbf)**

gT = green tons (up to 7" dbh)  
 S = small log mmbf (>7"-12" dbh)  
 L = large log mmbf (>12" dbh)

**Shasta-Trinity NF: 1 RD - 100%**  
**(gT = 2,500 / S = 1.75 / L = 2.5)**



	gT	mmbf	
	Biomass	Small Log	Large Log
2006	1250	1.000000	1.5
2007	1250	0.75	1
2008	0	0	0
2009	0	0	0
2010	0	0	0
<b>Totals</b>	<b>2500</b>	<b>1.75</b>	<b>2.5</b>
<b>%</b>	<b>11%</b>	<b>37%</b>	<b>53%</b>
<b>mmbf</b>	<b>0.5</b>		

**4.75**

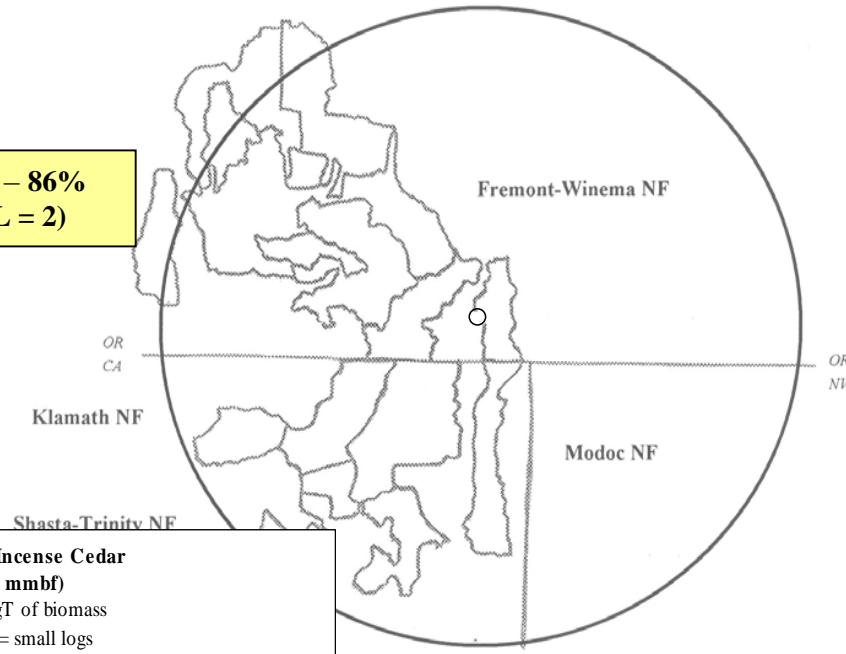
**Oregon: *Incense Cedar* CROP offering '06 - '10**  
**(gT = 2,500 / S = 1.36 mmbf / L = 2.495 mmbf)**

gT = green tons (up to 7" dbh)  
 S = small log mmbf (>7"-12" dbh)  
 L = large log mmbf (>12" dbh)

**Shasta-Trinity NF: 1 RD - 86%**  
**(gT = 2,500 / S = 1.25 / L = 2)**

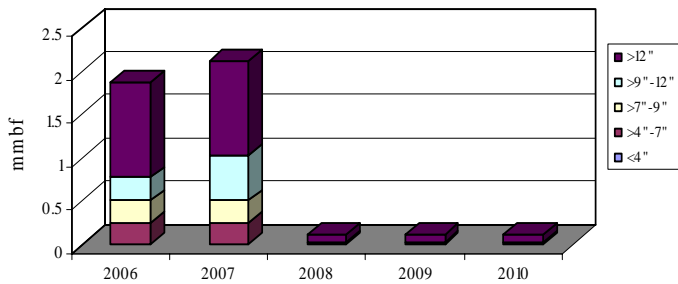
**OR-DSL: 5%**  
**(gT = 0 / S = .04 / L = .1782)**

**OR-DOF: 9%**  
**(gT = 0 / S = .07 / L = .317)**



**Oregon- All Agencies: *Incense Cedar***  
**(5-yr total = 4.355 mmbf)**

.5 mmbf is <7" = 2,500 gT of biomass  
 1.36 mmbf is >7"-12" = small logs  
 2.495 mmbf is >12" = large logs

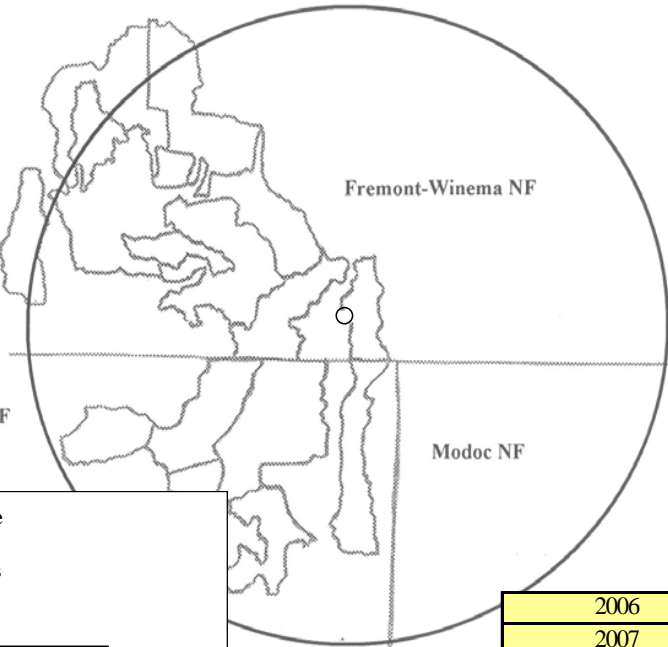


	gT	mmbf	
	Biomass	Small Log	Large Log
2006	1250	0.522000	1.099
2007	1250	0.772	1.099
2008	0	0.022	0.099
2009	0	0.022	0.099
2010	0	0.022	0.099
Totals	2500	1.36	2.495
%	11%	31%	57%
mmbf	0.5		

**4.355**

**Oregon: Sugar Pine CROP offering '06 – '10**  
**(gT = 2,500 / S = 1.025 mmbf / L = .505 mmbf)**

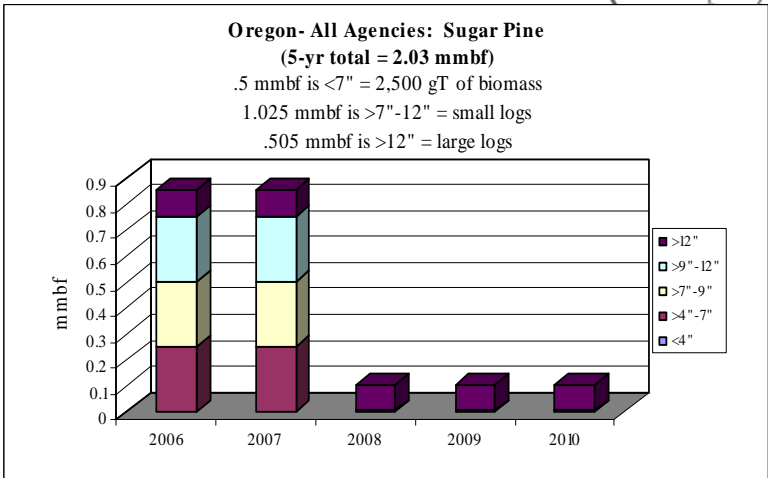
gT = green tons (up to 7" dbh)  
 S = small log mmbf (>7"-12" dbh)  
 L = large log mmbf (>12" dbh)



**Shasta-Trinity NF: 1 RD – 74%**  
**(gT = 2,500 / S = 1 / L = 0)**

**OR-DSL: 9%**  
**(gT = 0 / S = .009 / L = .182)**

**OR-DOF: 17%**  
**(gT = 0 / S = .016 / L = .323)**

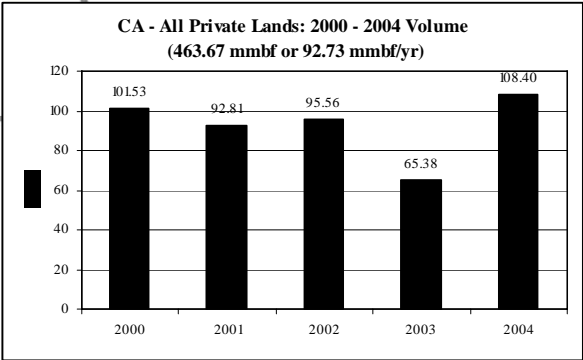
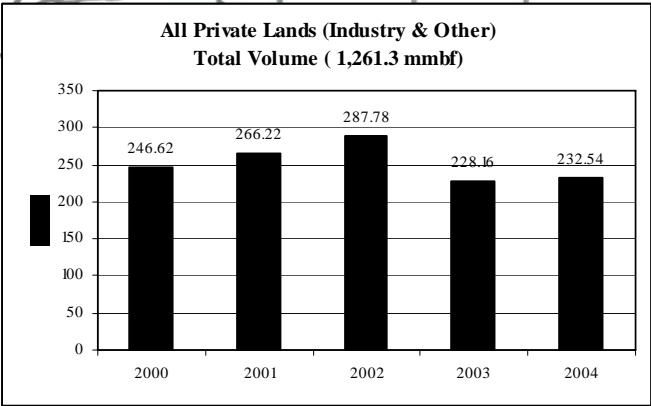
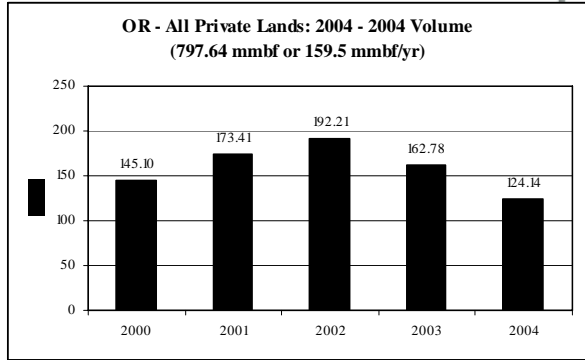
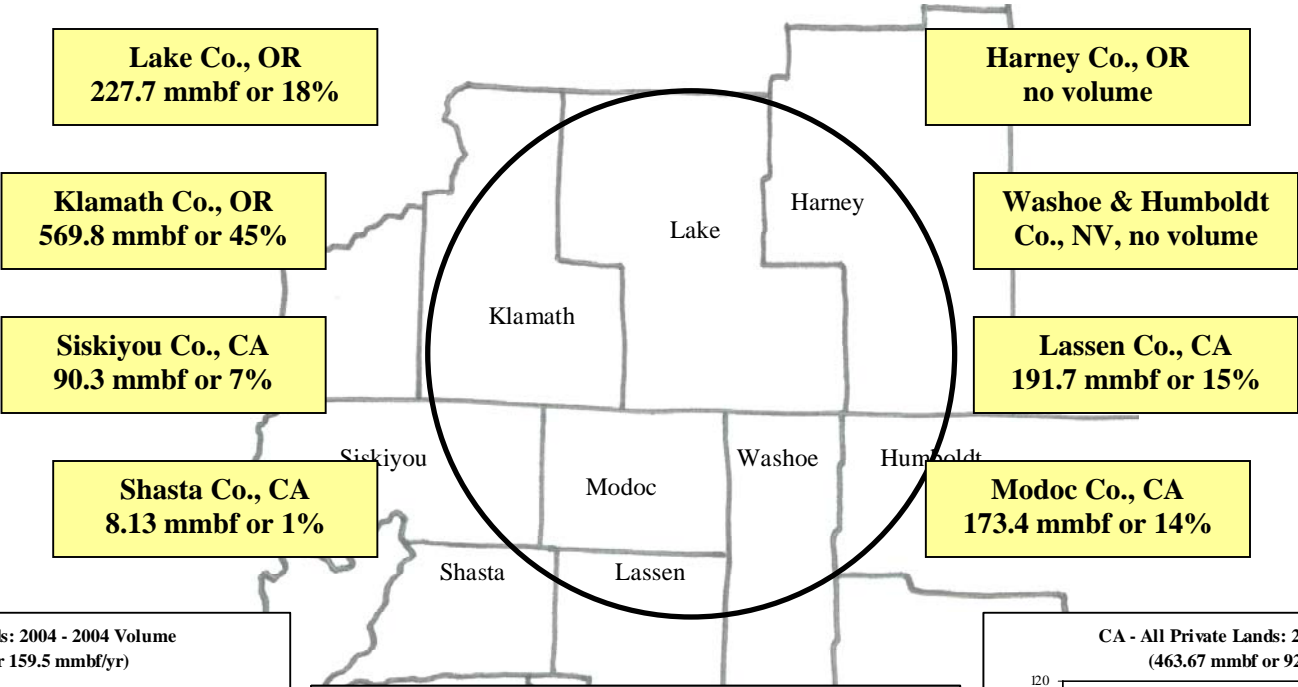


	gT	mmbf	
	Biomass	Small Log	Large Log
2006	1250	0.505000	0.101
2007	1250	0.505	0.101
2008	0	0.005	0.101
2009	0	0.005	0.101
2010	0	0.005	0.101
Totals	2500	1.025	0.505
%	25%	50%	25%
mmbf	0.5		

**2.03**

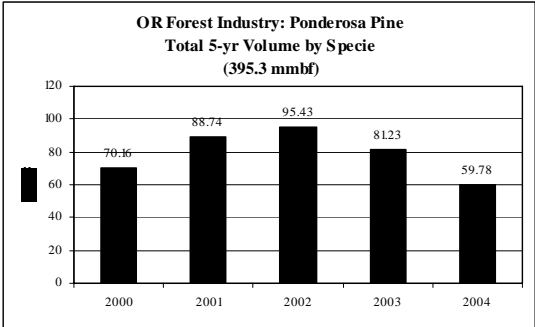


**All Private Lands (Industry & Other)**  
**2000 – 2004 volume = 1,261.3 mmbf or ~ 252.2 mmbf/yr**

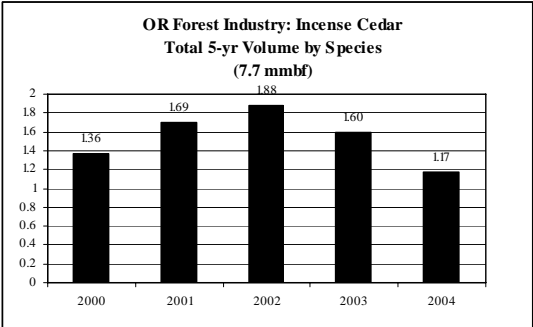


**Oregon Private Lands: Forest Industry  
2000 – 2004 Volume (All Species)  
770.5 mmbf**

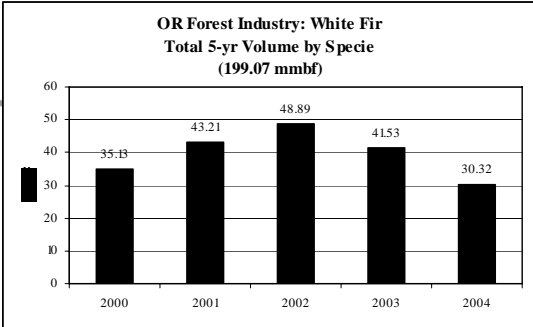
**Ponderosa Pine – 51%  
(395.3 mmbf)**



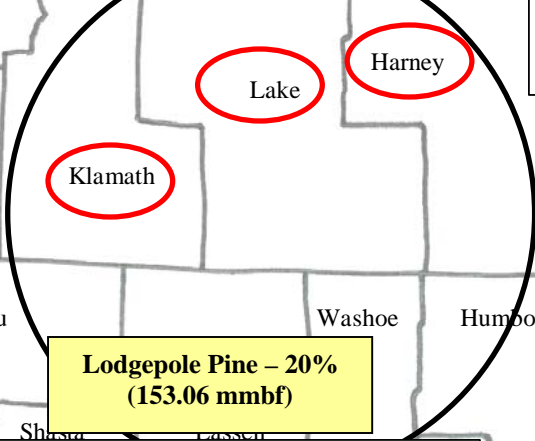
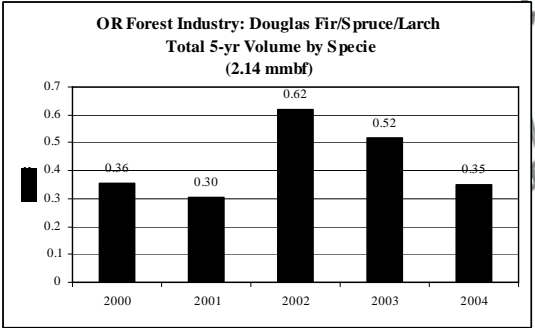
**Incense Cedar – 1%  
(7.7 mmbf)**



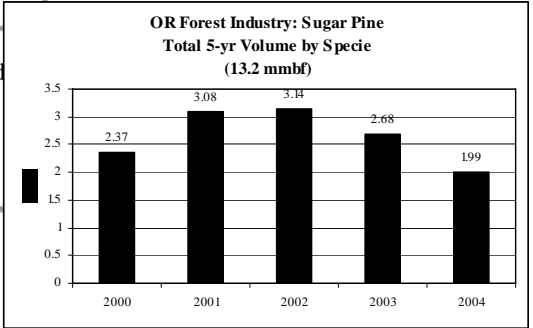
**White Fir – 26%  
(199.07 mmbf)**



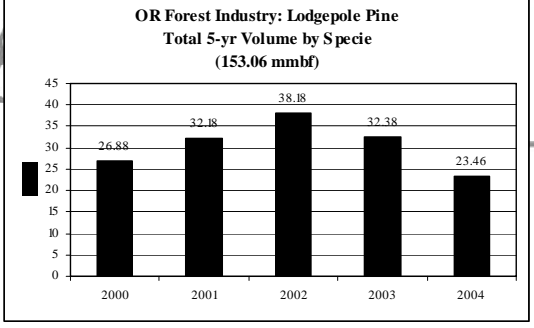
**Douglas Fir/Spruce/Larch – <1%  
(2.14 mmbf)**



**Sugar Pine – 2%  
(13.2 mmbf)**



**Lodgepole Pine – 20%  
(153.06 mmbf)**

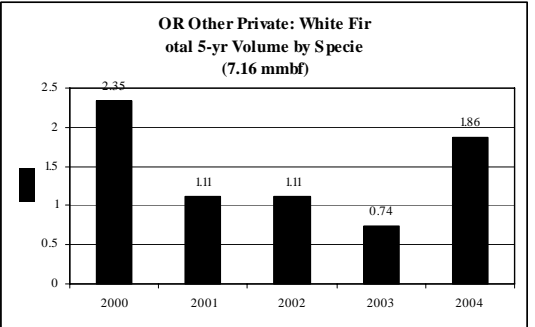
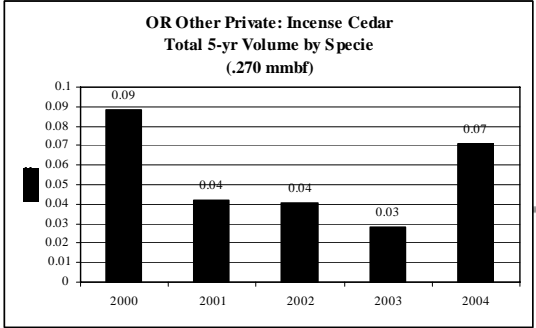
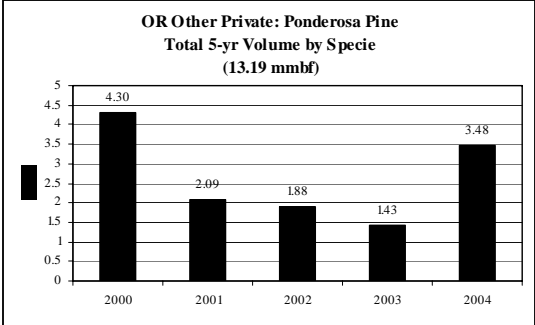


**Oregon Private Lands: Other  
2000 – 2004 Volume (All Species)  
27.04 mmbf**

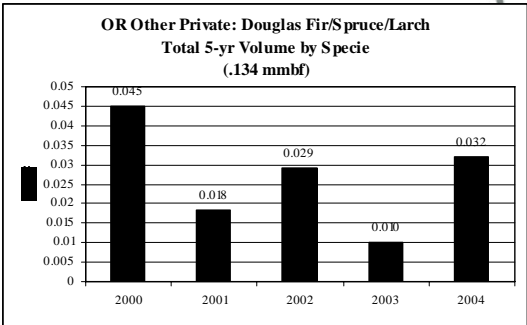
**Incense Cedar – 1%  
(.270 mmbf)**

**White Fir – 27%  
(7.16 mmbf)**

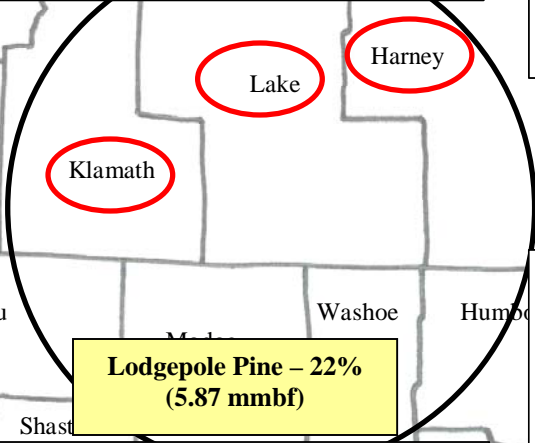
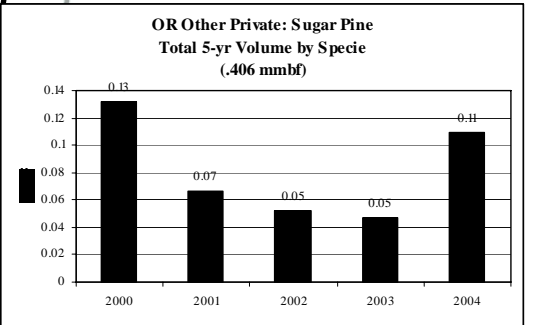
**Ponderosa Pine – 49%  
(13.19 mmbf)**



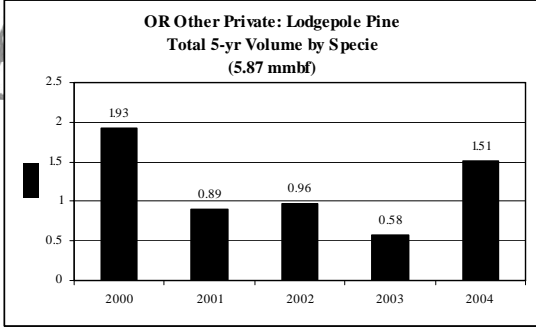
**Douglas Fir/Spruce/Larch – <1%  
(.134 mmbf)**



**Sugar Pine – 1%  
(.406 mmbf)**



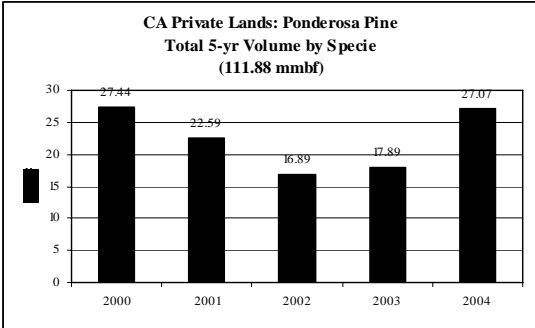
**Lodgepole Pine – 22%  
(5.87 mmbf)**



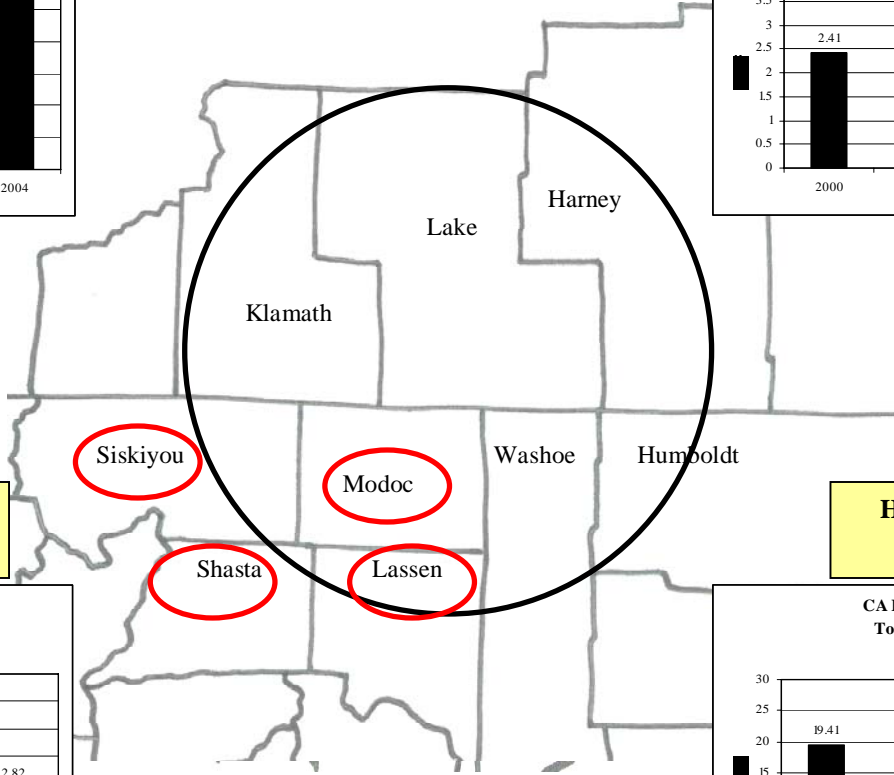
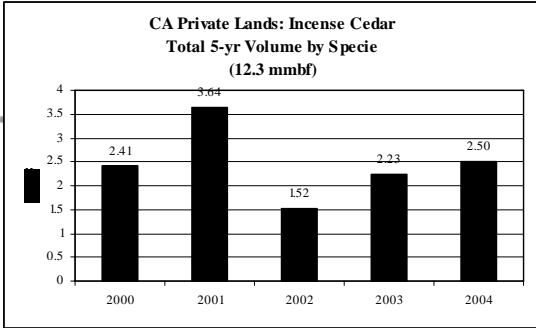
**California Private Lands: Other  
2000 – 2004 Volume (All Species) 463.6 mmbf**

(See next page for continuation)

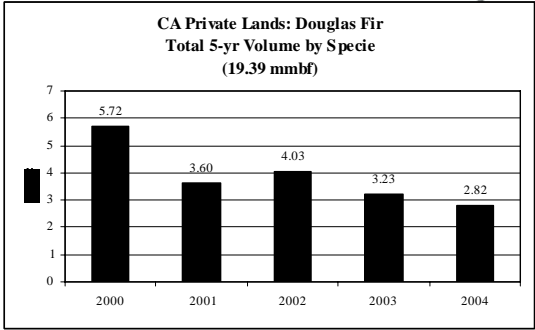
**Ponderosa Pine – 24%  
(111.88 mmbf)**



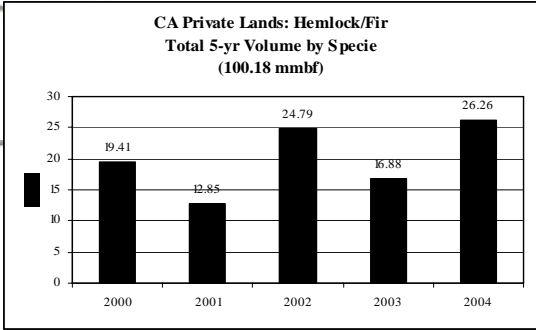
**Incense Cedar – 3%  
(12.3 mmbf)**



**Douglas Fir – 4%  
(19.39 mmbf)**

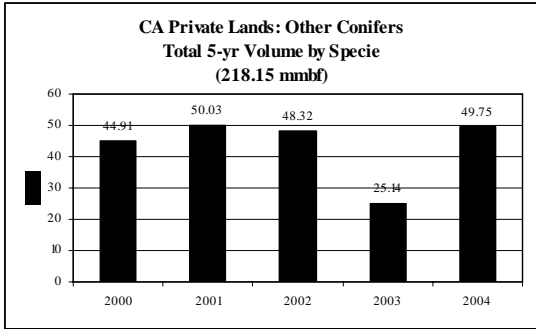


**Hemlock/Fir – 22%  
(100.18 mmbf)**

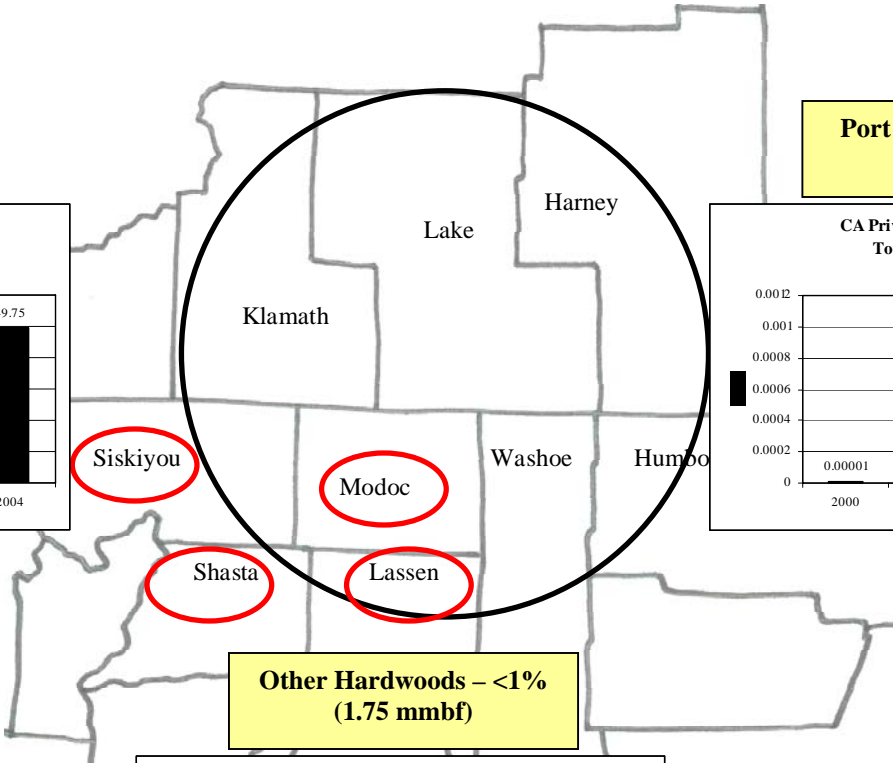
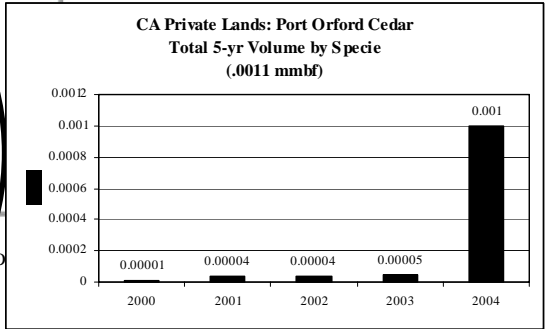


**California Private Lands: Other  
2000 – 2004 Volume (All Species)  
463.6 mmbf (cont.)**

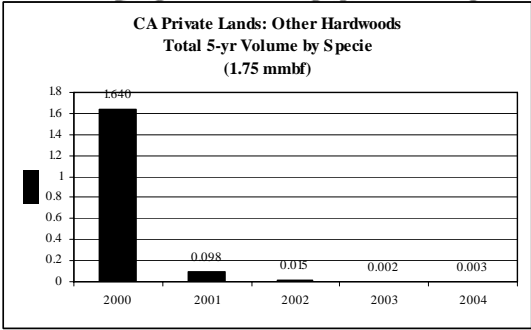
**Other Conifers – 47%  
(218.15 mmbf)**



**Port Orford Cedar – <1%  
(.0011 mmbf)**



**Other Hardwoods – <1%  
(1.75 mmbf)**



Questions? Contact:

**Edmund Gee:**

Nat'l Woody Biomass Utilization Team Leader  
Nat'l Partnership Coordinator USFS  
Washington DC  
tel: (202) 205-1787 fax: (202) 205-1045 cell: (202) 236-5153  
*E-mail: eagee@fs.fed.us*

**Catherine M. Mater:**

President—Mater Limited  
Senior Fellow – The Pinchot Institute for Conservation  
Corvallis, Oregon; Washington, DC  
tel: (541) 753-7335 fax: (541) 752-2952; cell: (541) 760-5526  
*E-mail: catherine@mater.com*