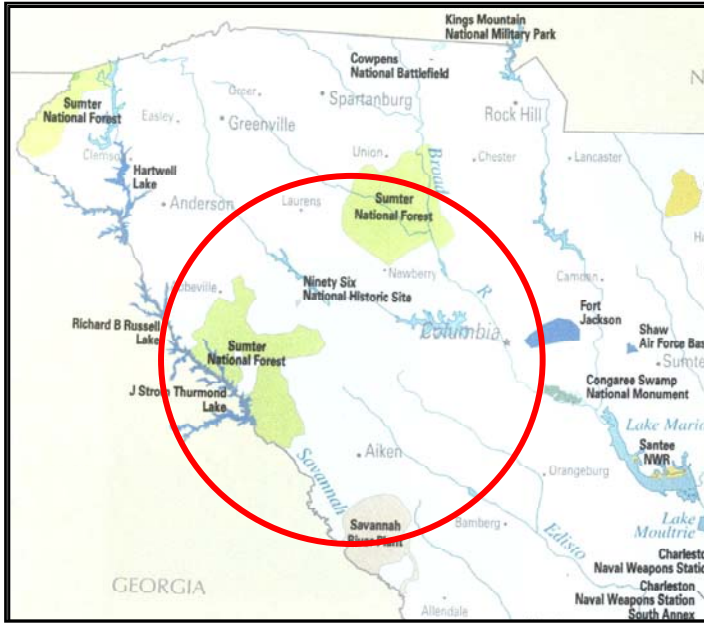


South Carolina 2 CROP

A Summary of CROP Landscape Analyses Results
(2006 – 2010)



South Carolina 2 CROP:
Center Point: Saluda
50-mi. radius

1 National Forest
SC DNR
Charleston Air Force Base
Savannah River
Counties*
(*no removal planned)

gT = green tons (up to 7" dbh)
S = small log mmbf (>7"-12" dbh)
L = large log mmbf (>12" dbh)

<i>By Species</i>	5-yr total (Biomass = gT)	5-yr total Small log (mmbf)	5-yr total Large log (mmbf)
Loblolly pine (76% of 5-yr. total)	266,528	74.491	150.918
Longleaf pine (12% of 5-yr. total)	41,512	12.269	21.925
Slash pine (9% of 5-yr. total)	33,210	9.815	17.54
Gum species (2% of 5-yr. total)	5,100	2.62	1.95
Oak species (1% of 5-yr. total)	5,100	1.82	1.622
Hardwoods (1% of 5-yr. total)	2,550	1.11	.906

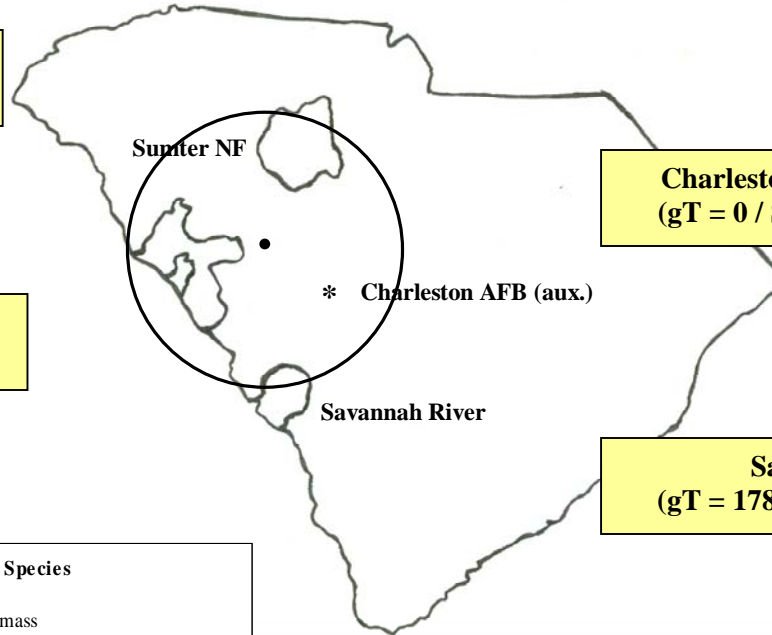
Sumter NF: (gT= 175,200; Small log = 48.5 mmbf; Large log = 101.7 mmbf)

Ranger Districts	5-yr total (Biomass = gT)	5-yr total Small log (mmbf)	5-yr total Large log (mmbf)
Long Cane	79,800	20.9	60.7
Enoree	95,400	27.6	41

**South Carolina 2: All Agencies CROP offering '06 – '10
(gT = 354,000 / S = 102.13 mmbf / L = 194.86 mmbf)**

gT = green tons (up to 7" dbh)
S = small log mmbf (>7"-12" dbh)
L = large log mmbf (>12" dbh)

**Sumter NF: 2 RDs – 50%
(gT = 175,200 / S = 48.5 / L = 101.7)**



**Charleston AFB: – <1%
(gT = 0 / S = 0 / L = .496)**

**SC DNR: <1%
(gT = 0 / S = 0 / L = 1.089)**

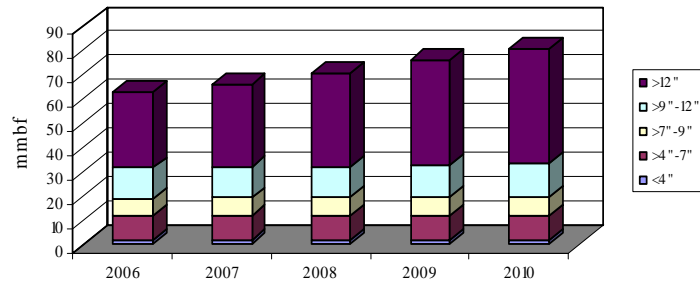
**Savannah River: – 49%
(gT = 178,800 / S = 53.625 / L = 91.575)**

**South Carolina 2 - All Agencies: All Species
(5-yr total = 355.986 mmbf)**

59 mmbf is <7" = 354,000 gT of biomass

102.125 mmbf is >7"-12" = small logs

194.861 mmbf is >12" = large logs

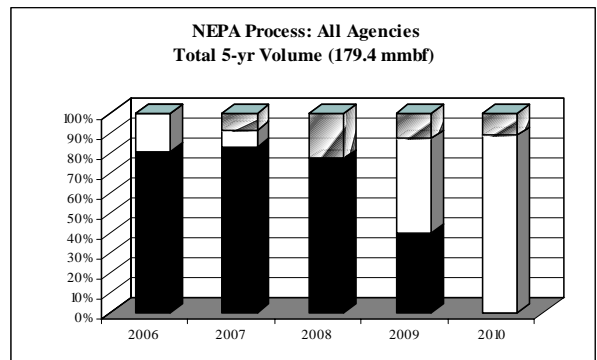
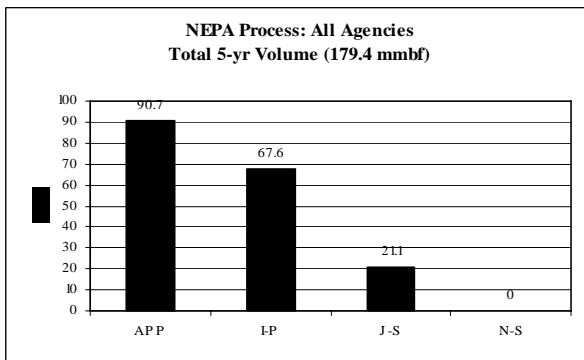


	gT		mmbf	
	Biomass	Small Log	Large Log	
2006	69960	19.825	31.61914272	
2007	69960	20.125	34.09714286	
2008	71160	20.325	38.415	
2009	71160	20.725	43.115	
2010	71760	21.125	47.615	
Totals	354000	102.125	194.8612856	
%	17%	29%	55%	
mmbf	59			

355.9862856

South Carolina 2 NEPA Process – All Agencies:
 Total 5-yr volume (179.4 mmbf; includes gT as mmbf)

	<i>mmbf</i>	<i>% of total</i>
<i>Approved (APP)</i>	90.7	51%
<i>In process (I-P)</i>	67.6	38%
<i>Just started (J-S)</i>	21.1	12%
<i>Not started (N-S)</i>	0	0%



South Carolina 2: All Agencies CROP offering '06 – '10
(gT = 354,000 / S = 102.13 mmbf / L = 194.86 mmbf)

Charleston AFB: *

A Charleston AFB (.496429 mmbf)**

SC DNR:

B SC DNR (1.089857 mmbf)

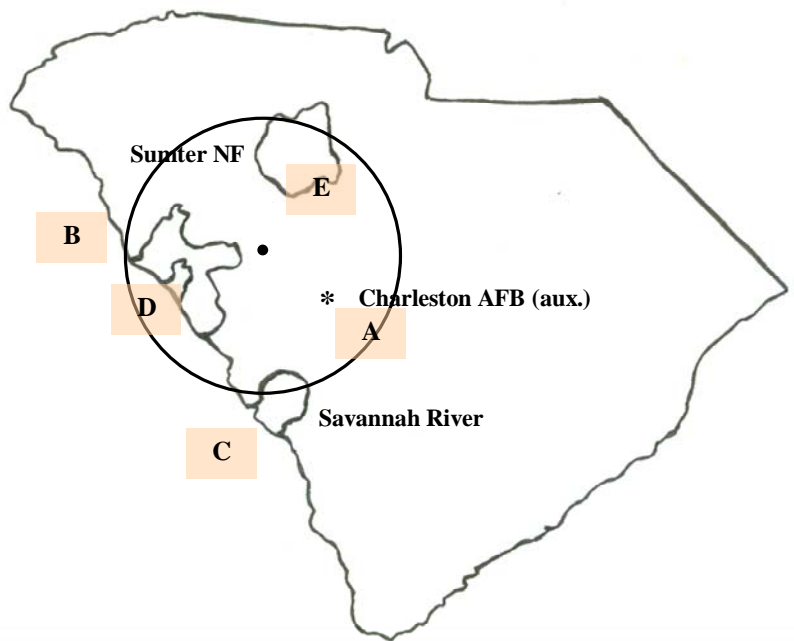
Savannah River:

C Savannah River (175 mmbf)

Sumter NF:

D Long Cane RD (94.9 mmbf)

E Enoree RD (84.5 mmbf)



* located in North, SC
 ** 5-yr volume offering

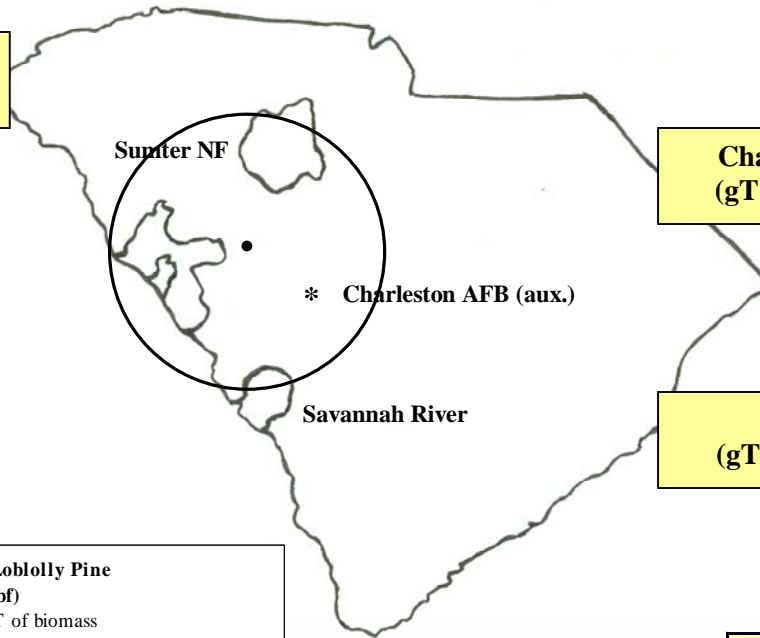
**South Carolina 2: Loblolly Pine CROP offering '06 - '10
(gT = 266,527 / S = 74.49 mmbf / L = 150.92 mmbf)**

gT = green tons (up to 7" dbh)
S = small log mmbf (>7"-12" dbh)
L = large log mmbf (>12" dbh)

Sumter NF: 2 RDs - 66%
(gT = 175,200 / S = 47.5 / L = 101.2)

Charleston AFB: - <1%
(gT = 0 / S = 0 / L = .393)

SC DNR: - <1%
(gT = 0 / S = 0 / L = 1.089)



Savannah River: - 34%
(gT = 91,327 / S = 26.99 / L = 48.235)

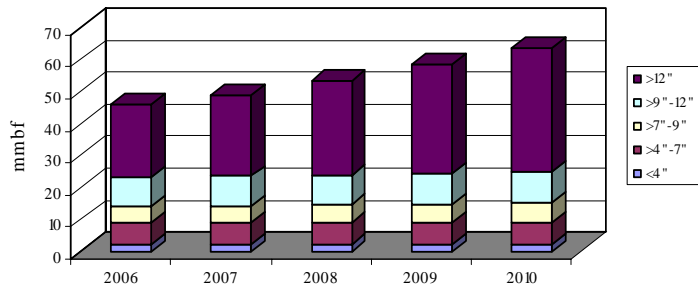
South Carolina 2- All Agencies: Loblolly Pine

(5-yr total = 269.83 mmbf)

44.421 mmbf is <7" = 266,527.5 gT of biomass

74.491 mmbf is >7"-12" = small logs

150.918 mmbf is >12" = large logs



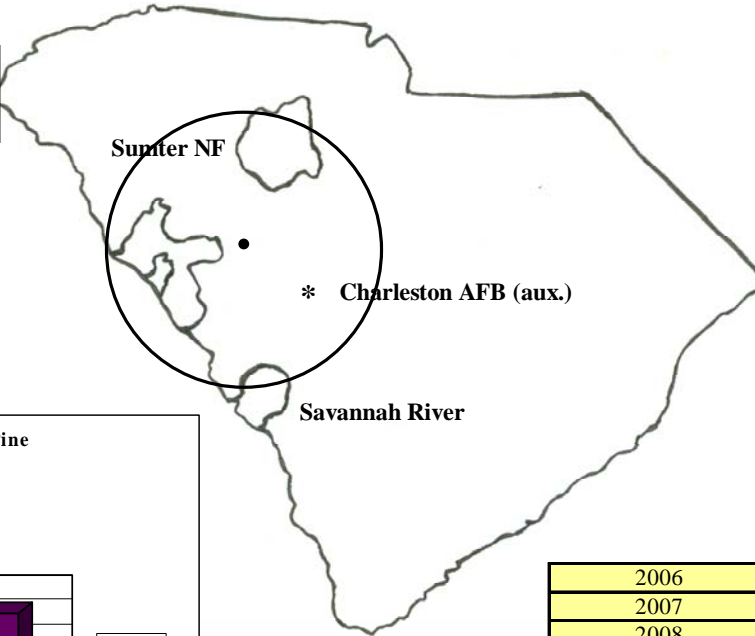
	gT	mmbf	
	Biomass	Small Log	Large Log
2006	52465.5	14.29825	22.82257129
2007	52465.5	14.59825	25.25414286
2008	53665.5	14.79825	29.647
2009	53665.5	15.19825	34.347
2010	54265.5	15.59825	38.847
Totals	266527.5	74.49125	150.9177141
%	16%	28%	56%
mmbf	44.42125		

269.8302141

South Carolina 2: Longleaf Pine CROP offering '06 – '10
(gT = 41,512.5 / S = 12.269 mmbf / L = 21.925 mmbf)

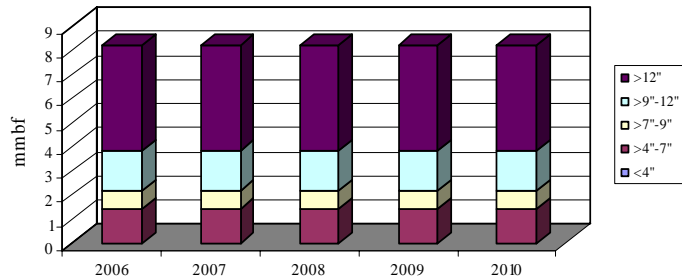
gT = green tons (up to 7" dbh)
 S = small log mmbf (>7"-12" dbh)
 L = large log mmbf (>12" dbh)

Savannah River – 100%
(gT = 41,512.5 / S = 12.269 / L = 21.925)



South Carolina 2 - All Agencies: Longleaf Pine
(5-yr total = 41.112 mmbf)

6.919 mmbf is <7" = 41,512 gT of biomass
 12.269 mmbf is >7"-12" = small logs
 21.925 mmbf is >12" = large logs



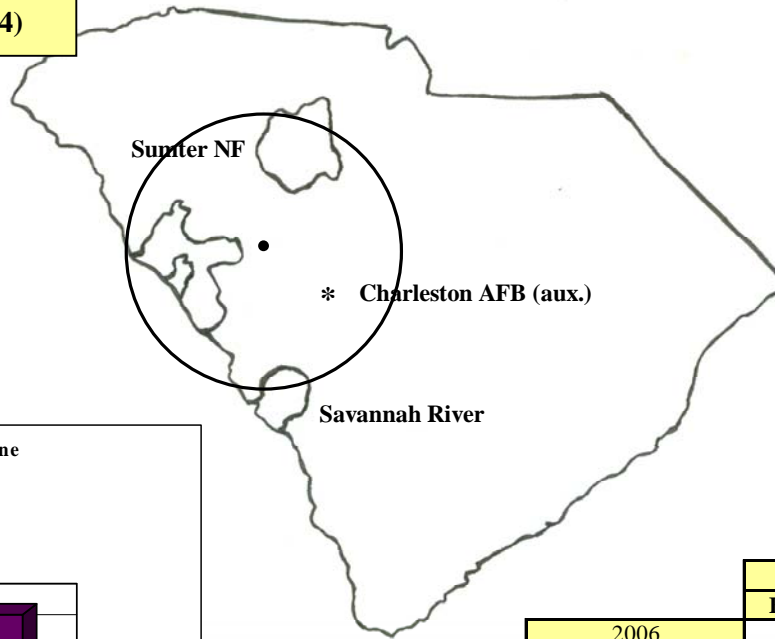
	gT	mmbf	
	Biomass	Small Log	Large Log
2006	8302.5	2.45375	4.385
2007	8302.5	2.45375	4.385
2008	8302.5	2.45375	4.385
2009	8302.5	2.45375	4.385
2010	8302.5	2.45375	4.385
Totals	41512.5	12.26875	21.925
%	17%	30%	53%
mmbf	6.91875		

41.1125

**South Carolina 2: Slash Pine CROP offering '06 – '10
(gT = 33,210 / S = 9.815 mmbf / L = 17.54 mmbf)**

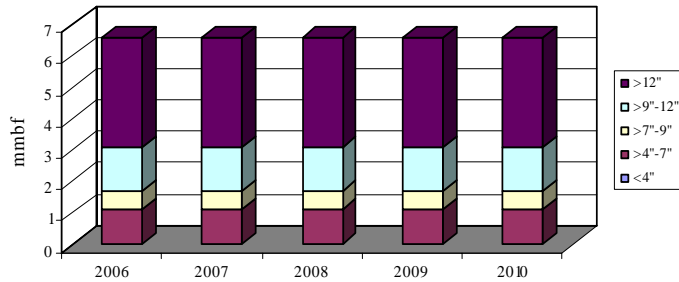
gT = green tons (up to 7" dbh)
S = small log mmbf (>7"-12" dbh)
L = large log mmbf (>12" dbh)

Savannah River: 100%
(gT = 33,210 / S = 9.815 / L = 17.54)



**South Carolina 2 - All Agencies: Slash Pine
(5-yr total = 32.89 mmbf)**

5.535 mmbf is <7" = 33,210 gT of biomass
9.815 mmbf is >7"-12" = small logs
17.54 mmbf is >12" = large logs



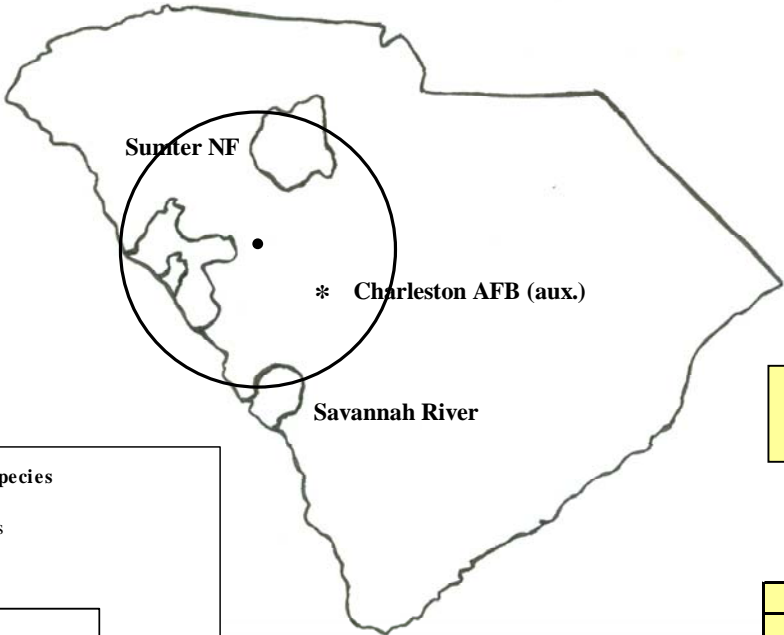
	gT	mmbf	
	Biomass	Small Log	Large Log
2006	6642	1.963	3.508
2007	6642	1.963	3.508
2008	6642	1.963	3.508
2009	6642	1.963	3.508
2010	6642	1.963	3.508
Totals	33210	9.815	17.54
%	17%	30%	53%
mmbf	5.535		

32.89

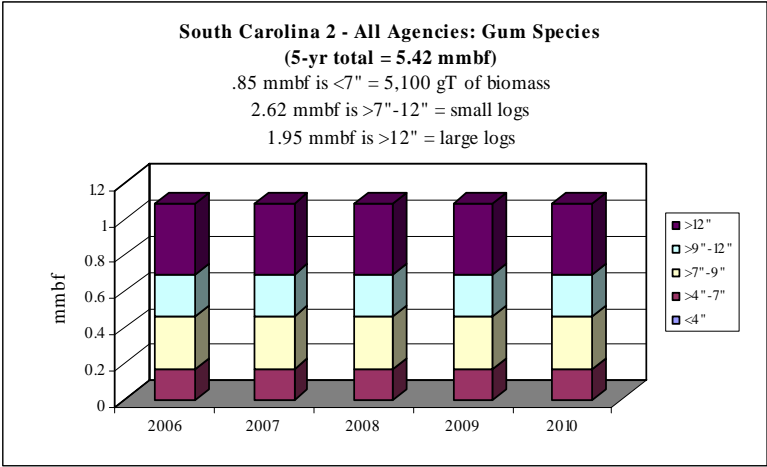
South Carolina 2: Gum Species CROP offering '06 - '10
(gT = 5,100 / S = 2.62 mmbf / L = 1.95 mmbf)

gT = green tons (up to 7" dbh)
 S = small log mmbf (>7"-12" dbh)
 L = large log mmbf (>12" dbh)

Savannah River: -78%
(gT = 5,100 / S = 1.82 / L = 1.55)



Sumter NF: 1 RD -22%
(gT = 0 / S = .8 / L = .4)



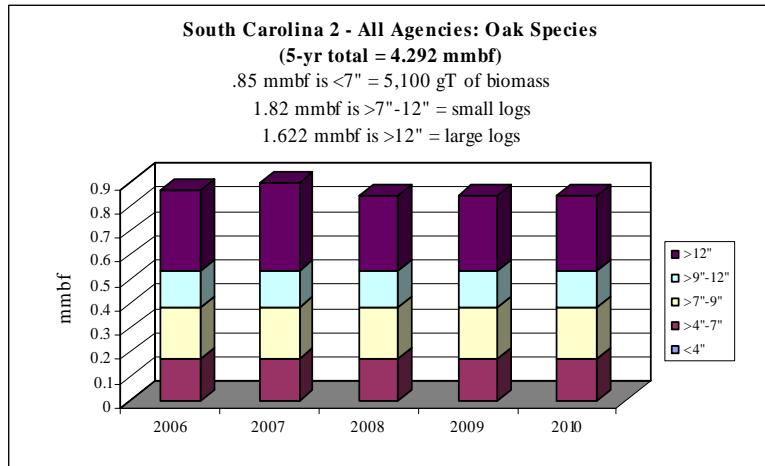
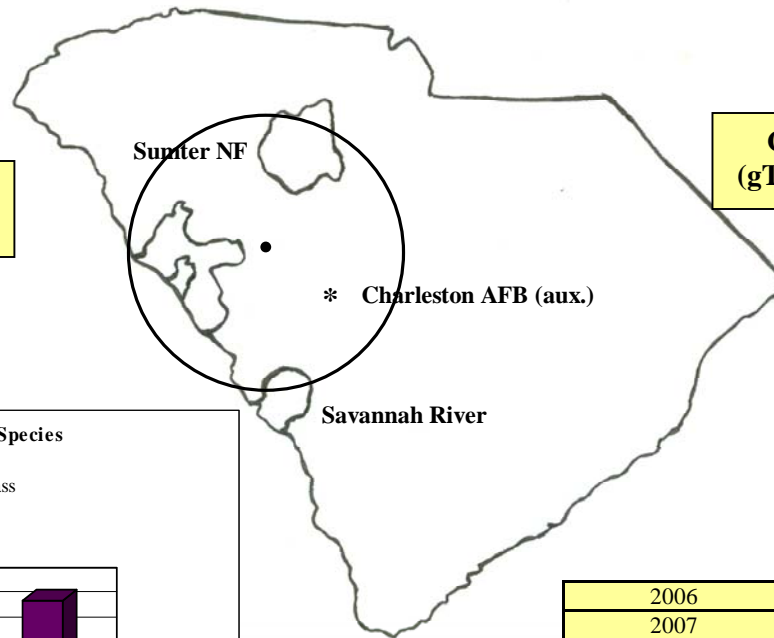
	gT	mmbf	
	Biomass	Small Log	Large Log
2006	1020	0.524	0.39
2007	1020	0.524	0.39
2008	1020	0.524	0.39
2009	1020	0.524	0.39
2010	1020	0.524	0.39
Totals	5100	2.62	1.95
%	16%	48%	36%
mmbf	0.85		

**South Carolina 2: Oak Species CROP offering '06 – '10
(gT = 5,100 / S = 1.82 mmbf / L = 1.62 mmbf)**

gT = green tons (up to 7" dbh)
S = small log mmbf (>7"-12" dbh)
L = large log mmbf (>12" dbh)

Savannah River: 98%
(gT = 5,100 / S = 1.82 / L = 1.55)

Charleston AFB: 2%
(gT = 0 / S = 0 / L = .0725)



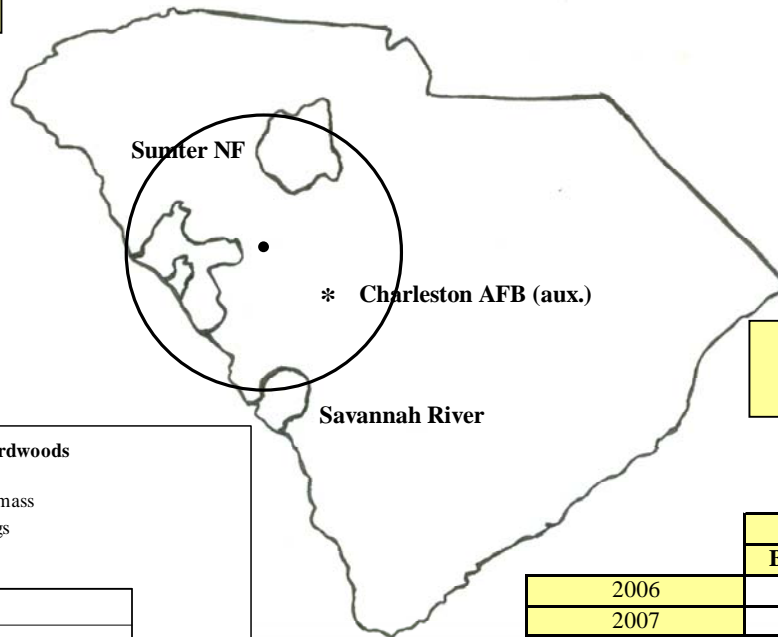
	gT	mmbf	
	Biomass	Small Log	Large Log
2006	1020	0.364	0.33
2007	1020	0.364	0.3625
2008	1020	0.364	0.31
2009	1020	0.364	0.31
2010	1020	0.364	0.31
Totals	5100	1.82	1.6225
%	20%	42%	38%
mmbf	0.85		

South Carolina 2: Hardwoods CROP offering '06 – '10
(gT = 2,550 / S = 1.11 mmbf / L = .906 mmbf)

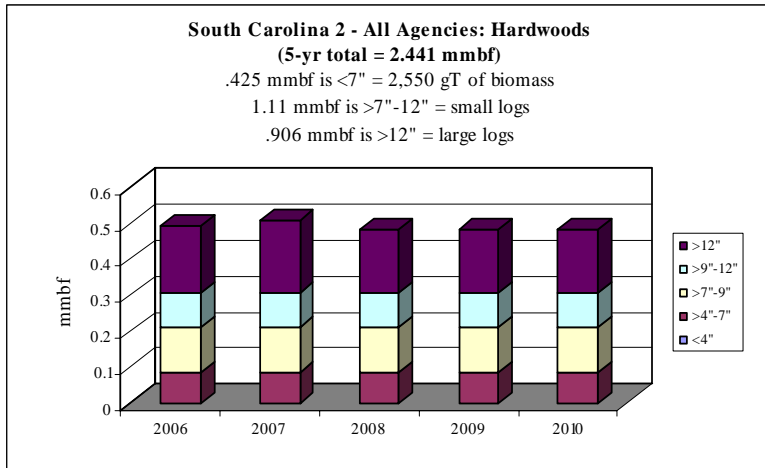
gT = green tons (up to 7" dbh)
 S = small log mmbf (>7"-12" dbh)
 L = large log mmbf (>12" dbh)

Savannah River: – 86%
(gT = 2,550 / S = .91 / L = .775)

Charleston AFB: – 1%
(gT = 0 / S = 0 / L = .0311)



Sumter NF: 1 RD – 12%
(gT = 0 / S = .2 / L = .1)



	gT	mmbf	
	Biomass	Small Log	Large Log
2006	510	0.222	0.183571429
2007	510	0.222	0.1975
2008	510	0.222	0.175
2009	510	0.222	0.175
2010	510	0.222	0.175
Totals	2550	1.11	0.906071429
%	17%	45%	37%
mmbf	0.425		

Questions? Contact:

Edmund Gee:

Nat'l Woody Biomass Utilization Team Leader
Nat'l Partnership Coordinator USFS
Washington DC
tel: (202) 205-1787 fax: (202) 205-1045 cell: (202) 236-5153
E-mail: eagee@fs.fed.us

Catherine M. Mater:

President—Mater Limited
Senior Fellow – The Pinchot Institute for Conservation
Corvallis, Oregon; Washington, DC
tel: (541) 753-7335 fax: (541) 752-2952; cell: (541) 760-5526
E-mail: catherine@mater.com