



Defense Base Closure and Realignment Commission

*2005 Defense Base Closure
and Realignment Commission*



Defense Base Closure and Realignment Commission

HISTORY OF BASE CLOSURES

- 1977 LEGISLATION, 10 U.S.C. 2687
 - Added congressional oversight restrictions prior to closure by SECDEF
 - Effectively stopped significant closures for a decade
- 1988 LEGISLATION, PUBLIC LAW 100-526
 - Congress codified Commission chartered by SECDEF
 - 86 closures and 13 realignments
 - Commission process internal to DoD - lacked openness
- 1990 LEGISLATION:
 - Defense Base Closure and Realignment Act of 1990
 - Required Fair and Open Process
 - Created 1991, 1993, and 1995 Commissions
- FY 05 DEFENSE AUTHORIZATION ACT
 - Amended 1990 Act and established 2005 Commission



Defense Base Closure and Realignment Commission

METHOD

- SECDEF publishes Final Selection Criteria and Force Structure Plan used in developing recommendations
- Commission reviews SECDEF recommendations to ensure consistency with Criteria and Force Structure Plan
- Legislative requirement for data certified by selected DoD officials and for sworn testimony of Commission witnesses
- Commission may change DoD recommendations if SECDEF “deviated substantially” from Final Selection Criteria and Force Structure Plan



Defense Base Closure and Realignment Commission

Force Structure Plan

- Chairman, Joint Chiefs of Staff, provided a long-term Force Structure Plan
- Based on analysis of current and future threats, challenges and opportunities for a 20-year period
- Submitted in classified and unclassified versions
- Developed through detailed analysis since the 2001 Quadrennial Defense Review
- Defines the overall mix of force structure capabilities, size, posture, patterns of activity, readiness and surge capacity
- Capability determination based on a range of scenarios



Defense Base Closure and Realignment Commission

2005 SELECTION CRITERIA (Chart 1 of 2)

MILITARY VALUE CRITERIA:

1. Current and future mission capabilities and the impact on operational readiness, including the impact on joint warfighting, training, and readiness
2. Availability and condition of land, facilities, and associated airspace at both existing and potential receiving locations
3. Ability to accommodate contingency, mobilization, surge, and future total force requirements
4. Cost of operations and the manpower implications



Defense Base Closure and Realignment Commission

2005 SELECTION CRITERIA (Chart 2 of 2)

OTHER CRITERIA:

5. Extent and timing of potential costs and savings
6. Economic impact on existing communities
7. Ability of the infrastructure of both existing and potential receiving communities to support forces, missions, and personnel
8. Environmental impact



Defense Base Closure and Realignment Commission

COMMISSION RESPONSIBILITIES

- ENSURE FAIRNESS:

“In considering installations for closure or realignment, the Secretary shall consider all military installations inside the United States equally ...”

[Section 2903(c)(3), Public Law 101-510]

- ENSURE OPENNESS:

“Each meeting of the Commission, other than meetings in which classified information is to be discussed, shall be open to the public.”

[Section 2902(e)(2)(A), Public Law 101-510]



Defense Base Closure and Realignment Commission

GUIDING PRINCIPLES

- Commissioner visits every installation recommended for a major closure or realignment action (300 or more civilians)
- Every affected community has a chance to be heard
- Regional hearings provide communities a forum
- Commission documentation made available to public
- Commission activities open to the press and the public



Defense Base Closure and Realignment Commission

COMMUNITY INTERACTION

- Held 20 regional hearings and over 300 community meetings
- Commission received over 300,000 pieces of written correspondence
- Website (www.brac.gov) received over 25 million hits
- Over 13,000 public comments posted to the website



Defense Base Closure and Realignment Commission

TIMELINE (Chart 1 of 2)

- May 13 - DoD report submitted to Commission
- Throughout process - Investigative hearings
- May through July - Base visits/regional hearings
- July 1 - GAO report released
- July 19 – “Adds”/substitutions hearing
- July and August – “Adds” base visits/regional hearings
- August 24-27 - Final deliberation hearings
- September 8 - Report sent to the President





Defense Base Closure and Realignment Commission

TIMELINE (Chart 2 of 2)

- The President had 15 days to review the Report and decide to accept or reject in its entirety (Accepted September 15th)
- If rejected, the Commission would have had until October 20, 2005 to amend and resubmit the Report to the President (not necessary)
- Congress has 45 days to disapprove the final Report
- The Commission's final Report has the force of law if not rejected by Congress



Defense Base Closure and Realignment Commission

PARTICIPANTS

- NINE COMMISSIONERS, APPOINTED BY PRESIDENT:
 - Selected with active involvement of Congress
 - Prior rounds had eight commissioners
- GOVERNMENT ACCOUNTABILITY OFFICE (GAO):
 - Monitor the DoD process for objectivity and consistency
 - Provide direct analysis of process and recommendations
 - Report on process and recommendations by July 1, 2005



Defense Base Closure and Realignment Commission

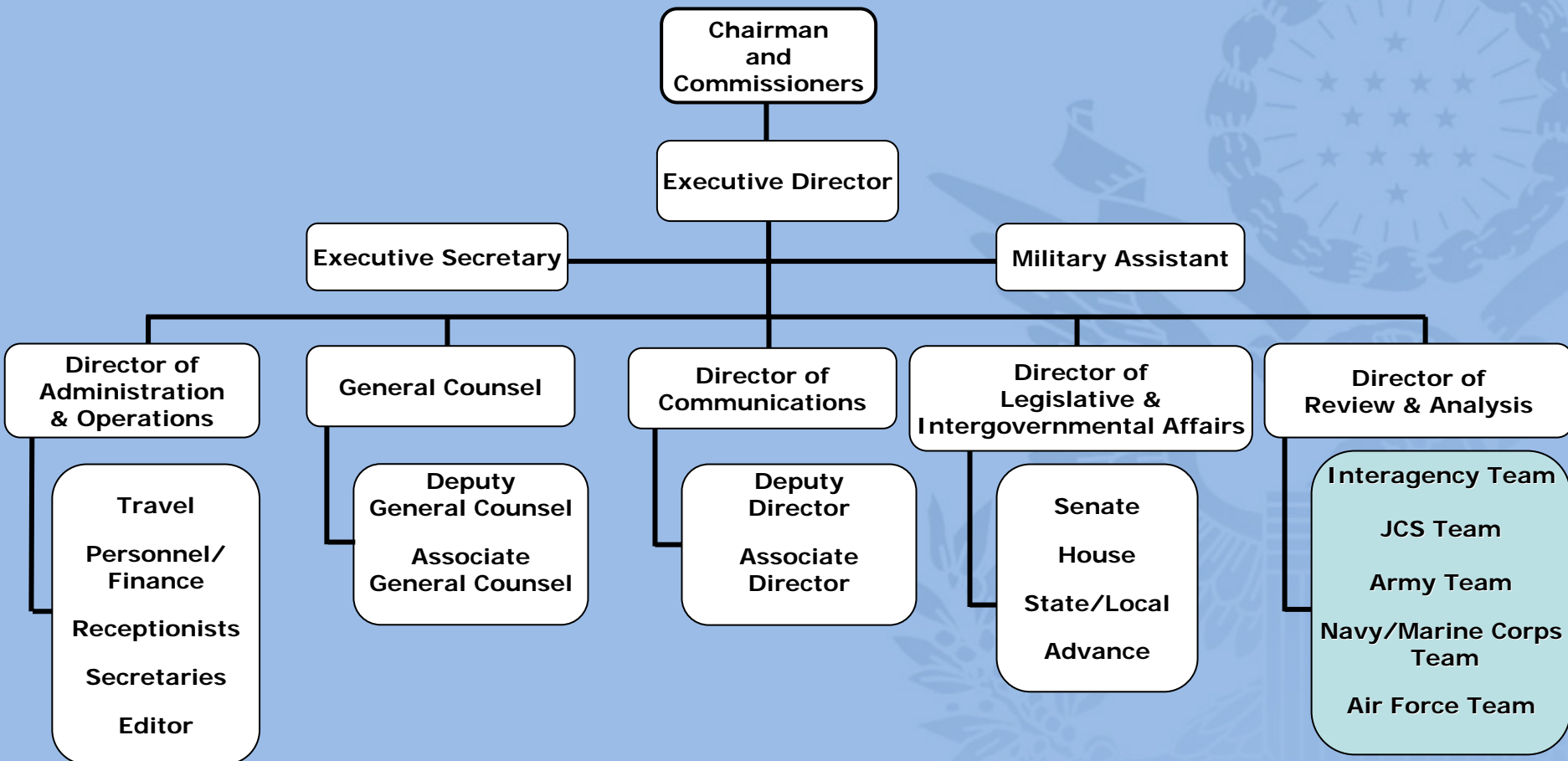
2005 COMMISSIONERS

- The Honorable Anthony J. Principi (Chairman)
- The Honorable James H. Bilbray
- The Honorable Philip E. Coyle, III
- Admiral Harold W. Gehman, Jr., USN (Ret)
- The Honorable James V. Hansen
- General James T. Hill, USA (Ret)
- General Lloyd W. Newton, USAF (Ret)
- The Honorable Samuel K. Skinner
- Brigadier General Sue E. Turner, USAF (Ret)



Defense Base Closure and Realignment Commission

2005 COMMISSION ORGANIZATION





Defense Base Closure and Realignment Commission

INTERAGENCY TEAM

Matrixed team supports the rest of the Commission analysts in five key areas:

- Economic Impact (Department of Commerce)
- Environmental Issues (Environmental Protection Agency)
- Airspace Concerns (Federal Aviation Administration)
- COBRA (Cost of Base Realignment Actions)
- Cartography (Maps and Geographic Information Systems)



Defense Base Closure and Realignment Commission

JOINT CROSS SERVICE TEAM

Supports direct analysis of those recommendations submitted by the SECDEF Joint Cross Service Sub-Groups

1. Education and Training
2. HQ and Support Activities
3. Industrial
4. Intelligence
5. Medical
6. Supply and Storage
7. Technical



Defense Base Closure and Realignment Commission

Major Army Closures (12) (Plant Value \geq \$100M)

Fort Gillem, GA

Mississippi Army Ammunition Plant, MS

Fort Monmouth, NJ

Umatilla Chemical Depot, OR

Fort McPherson, GA

Lone Star Army Ammunition Plant, TX

Newport Chemical Depot, IN

Deseret Chemical Depot, UT

Fort Monroe, VA

Riverbank Army Ammunition Plant, CA

Selfridge Army Activity, MI

Kansas Army Ammunition Plant, KS



Defense Base Closure and Realignment Commission

Major Army Realignments (6) (Losing \geq 400 Net Civilians and Military)

Walter Reed National Military Medical Center (to Bethesda, MD)

Rock Island Arsenal, IL

Fort Knox, KY

Army Reserve Personnel Center, St. Louis, MO

Ft. Eustis, VA

Red River Army Depot, TX



Defense Base Closure and Realignment Commission

Major Navy/Marine Corps Closures (5) (Plant Value \geq \$100M)

Naval Air Station Atlanta, GA

Naval Station Pascagoula, MS

Naval Air Station Willow Grove, PA

Naval Station Ingleside, TX

Naval Air Station Brunswick, ME



Defense Base Closure and Realignment Commission

Major Navy/Marine Corps Realignments (13) (Losing \geq 400 Net Civilians and Military)

Naval Base Ventura City, CA

Naval Base Coronado, CA

Naval District Washington, DC

NAS Pensacola, FL

Naval Station Great Lakes, IL

NAS Oceana, VA

NAS Corpus Christi, TX

Naval Support Activity Crane, IN

Naval Medical Center Portsmouth, VA

Naval Support Activity, New Orleans, LA

Naval Weapons Station Seal Beach,

Concord Detachment, CA

Naval Medical Center San Diego, CA

USMC Logistics Base Barstow, CA



Defense Base Closure and Realignment Commission

Major Air Force Closures (5) (Plant Value \geq \$100M)

Kulis Air Guard Station, AK

Onizuka Air Force Station, CA

Brooks City Base, TX

General Mitchell ARS, WI

Cannon Air Force Base, NM*

- * Closure recommendation goes into effect if the Secretary of Defense does not designate a new mission for the installation by December 31, 2009.



Defense Base Closure and Realignment Commission

Major Air Force Realignments (12) (Losing \geq 400 Net Civilians and Military)

Eielson AFB, AK

Elmendorf AFB, AK

Mountain Home AFB, ID

Pope AFB, NC

Grand Forks AFB, ND

Lackland AFB, TX

Sheppard AFB, TX

McChord AFB, WA

Otis Air National Guard Base, MA

W.K. Kellogg Airport Guard Station, MI

Niagara Falls International Airport Air
Guard Station, NY

Pittsburg International Airport Air
Reserve Station, PA



Defense Base Closure and Realignment Commission

Major Joint Cross Service Realignments (2) (Losing \geq 400 Net Civilians and Military)

NCR Leased locations, Washington DC Metropolitan Area

Defense Finance and Accounting Service (DFAS) Arlington, VA



Defense Base Closure and Realignment Commission

SUMMARY COMMISSION ACTIONS COMPARED TO DOD

	<u>DoD</u> <u>Recommended</u>	<u>Commission</u> <u>Approved</u>	<u>Commission</u> <u>Added</u>
1991	71	59 (83%)	1
1993	181	152 (84%)	17
1995	146	123 (84%)	9
2005	190	164 (86%)*	5

* 2005 “Approved” includes 119 “Accept” and 45 “Accept with Amendment”



Defense Base Closure and Realignment Commission

SUMMARY COMPARING BRAC ROUNDS

	<u>Major Base Closures</u>	<u>Major Base Realignments</u>	<u>Minor Closures and Realignments</u>	<u>One- Time Cost (\$B)</u>	<u>Annual Recurring Savings (\$B)</u>
1988	16	4	23	2.7	0.9
1991	26	17	32	5.2	2.0
1993	28	12	123	7.6	2.6
1995	27	22	57	6.5	1.7
2005	22	33	685	21.0	4.2
Total	119	88	920	43.0	11.4



Defense Base Closure and Realignment Commission

