

Republic of the Marshall Islands and the Micronesian Challenge

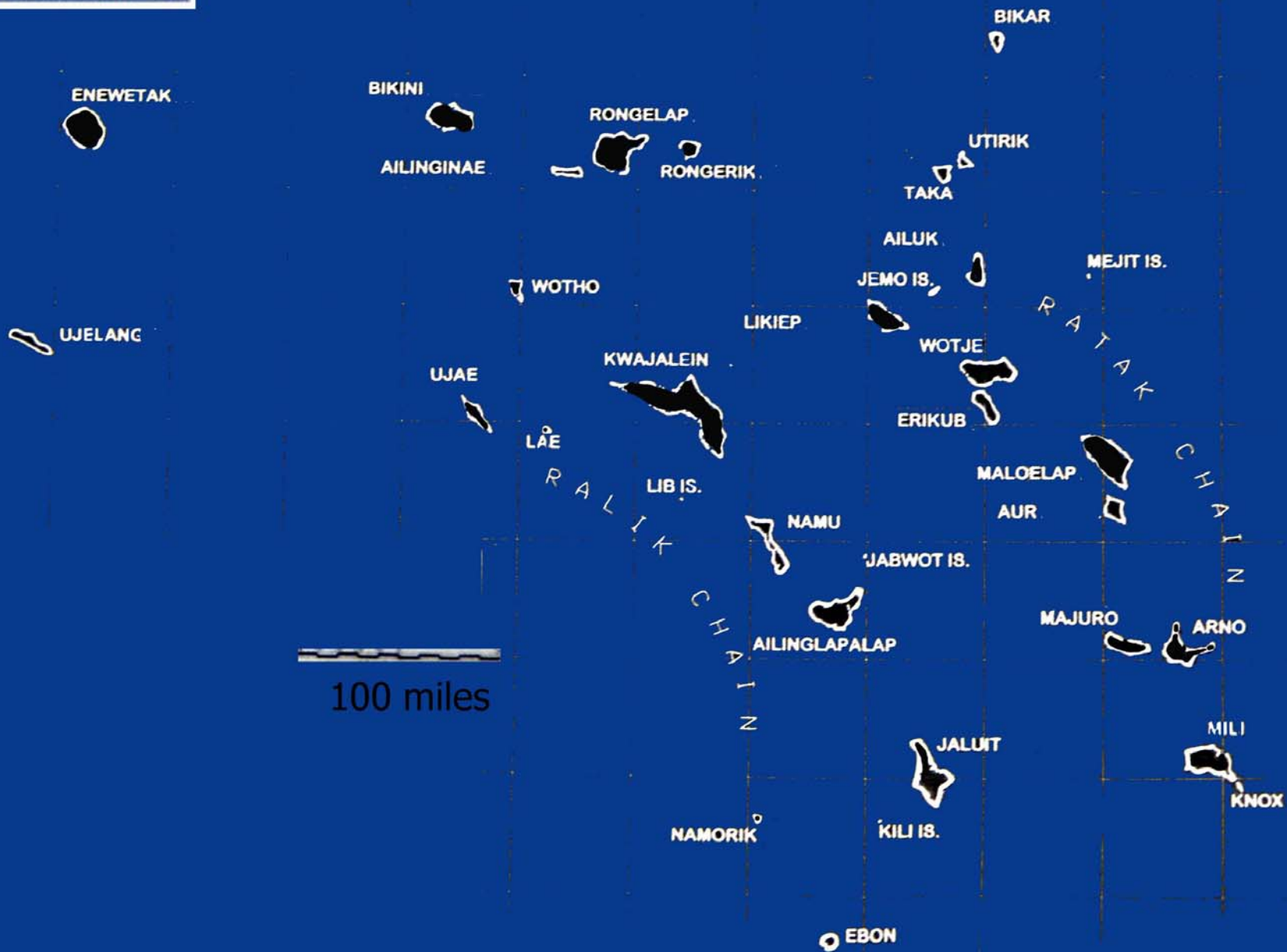


RMI: 2 chains of atolls in the middle of the Pacific





REPUBLIC OF THE MARSHALL ISLANDS





low lying islands

-70 sq. miles of land

- over 750,000 sq. miles of water



Formation of the Coastal Management Advisory Council (CMAC)

A Unique Group for the Region

An inter-governmental, non-governmental group
led by the Marshall Islands Marines Resources Authority

Members

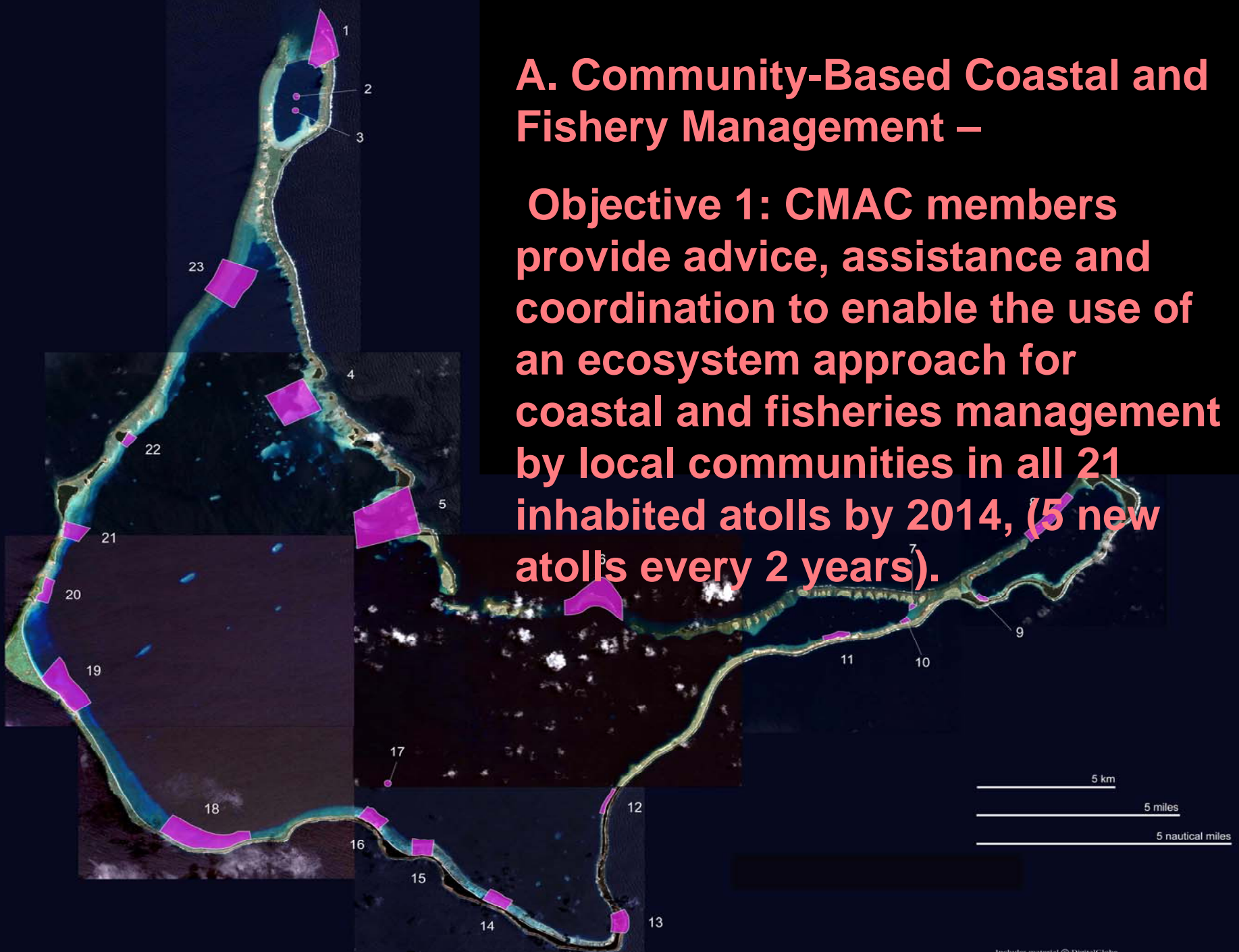
Marshall Islands Marine Resources Authority (MIMRA)
Office of Environmental Planning and Policy Coordination (OEPPC)
RMI Environmental Protection Agency (RMIEPA)
Ministry of Internal Affairs (IA)
College of the Marshall Islands (CMI)
Marshall Islands Visitors Authority (MIVA)
Historic Preservation Office (HPO)
Marshall Islands Conservation Society (MICS)
Natural Resources Assessment Surveys (NRAS)

Strategic Plan



A. Community-Based Coastal and Fishery Management –

Objective 1: CMAC members provide advice, assistance and coordination to enable the use of an ecosystem approach for coastal and fisheries management by local communities in all 21 inhabited atolls by 2014, (5 new atolls every 2 years).



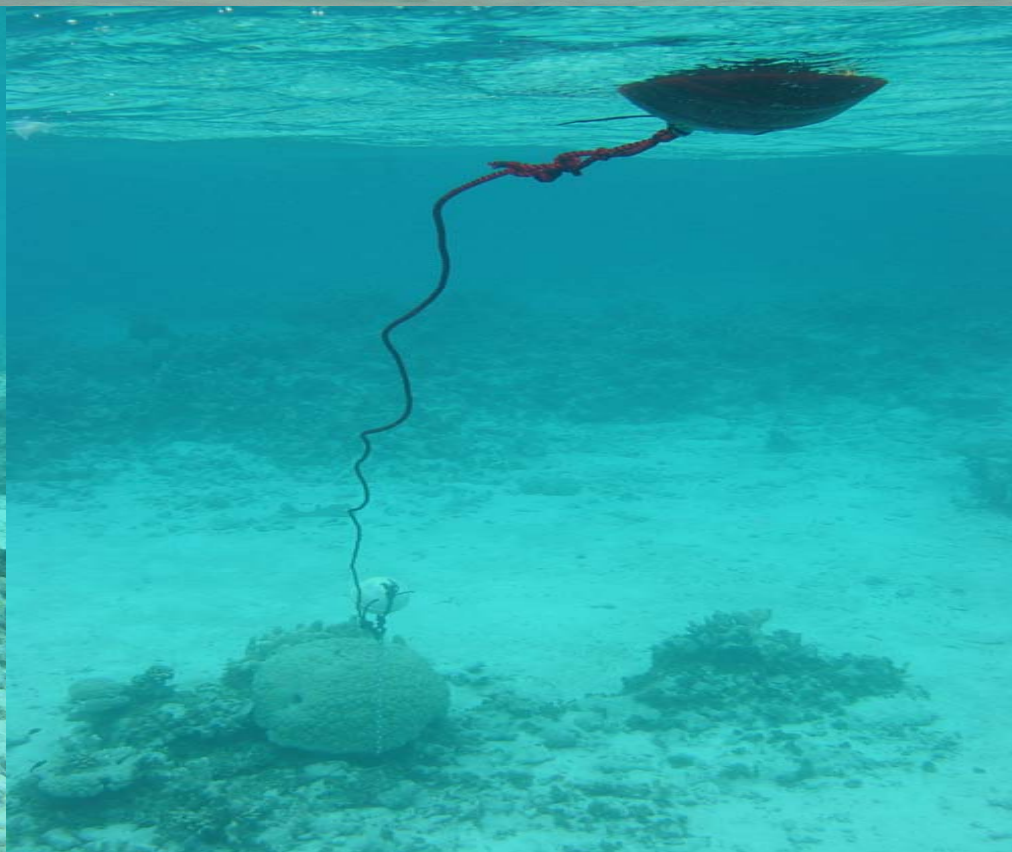
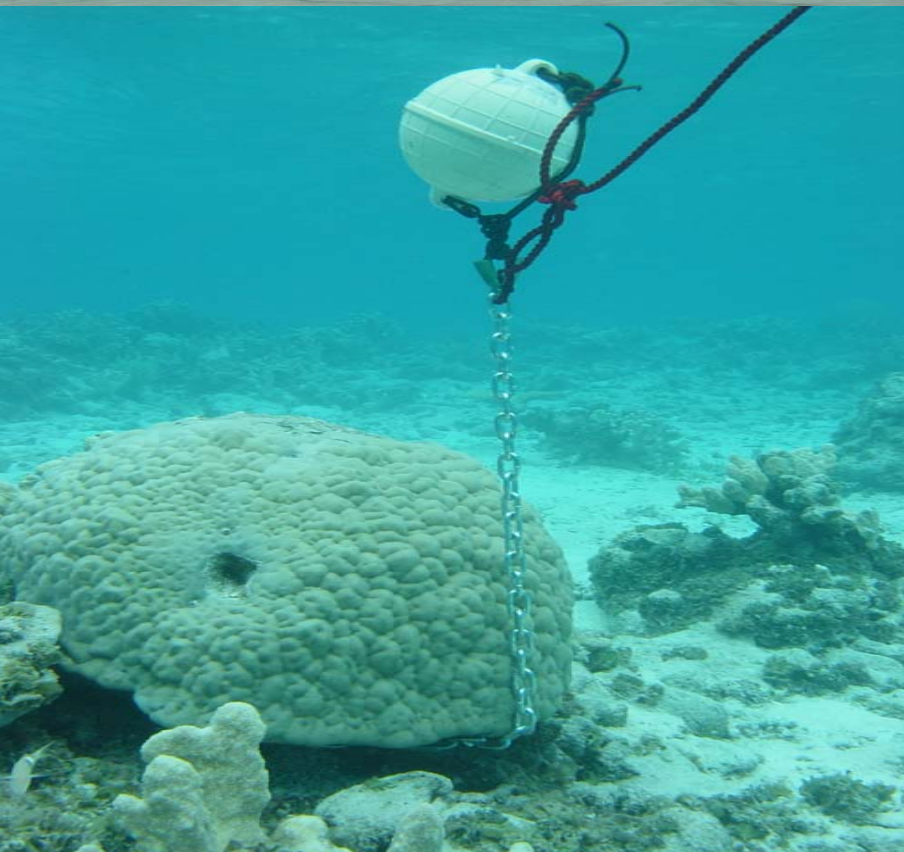
B. Preserving our Natural Heritage

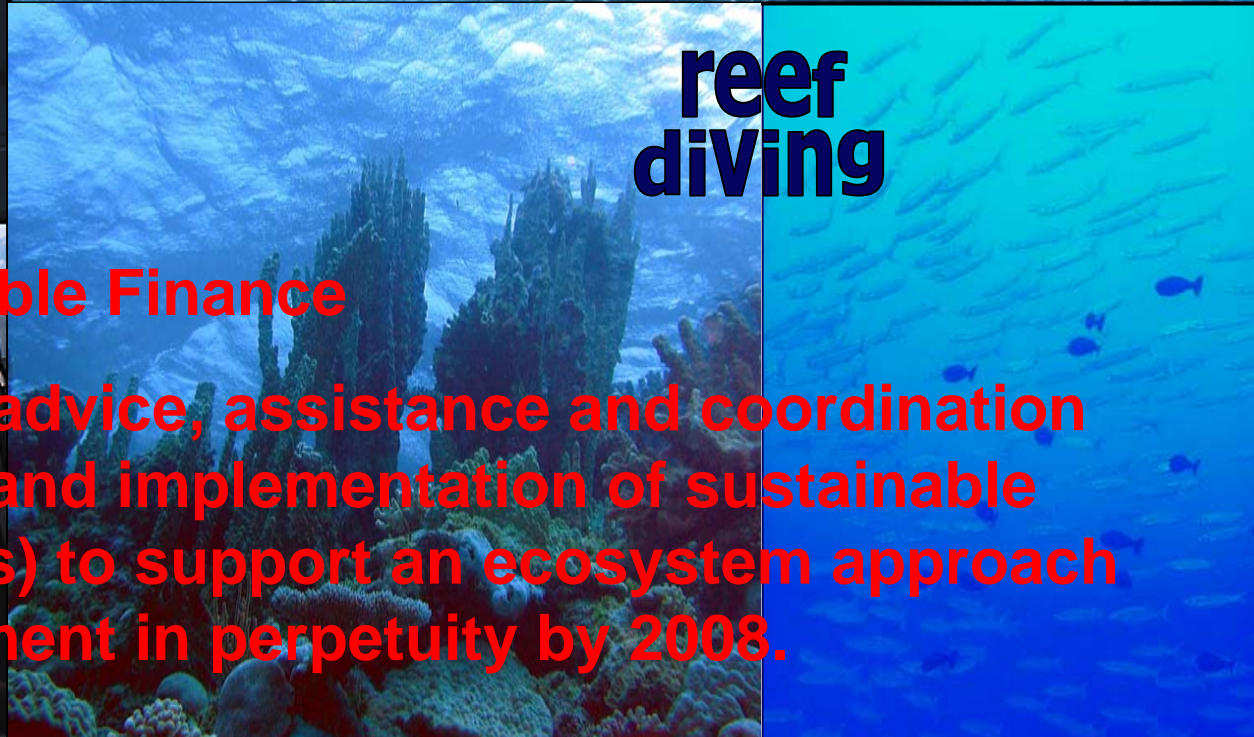
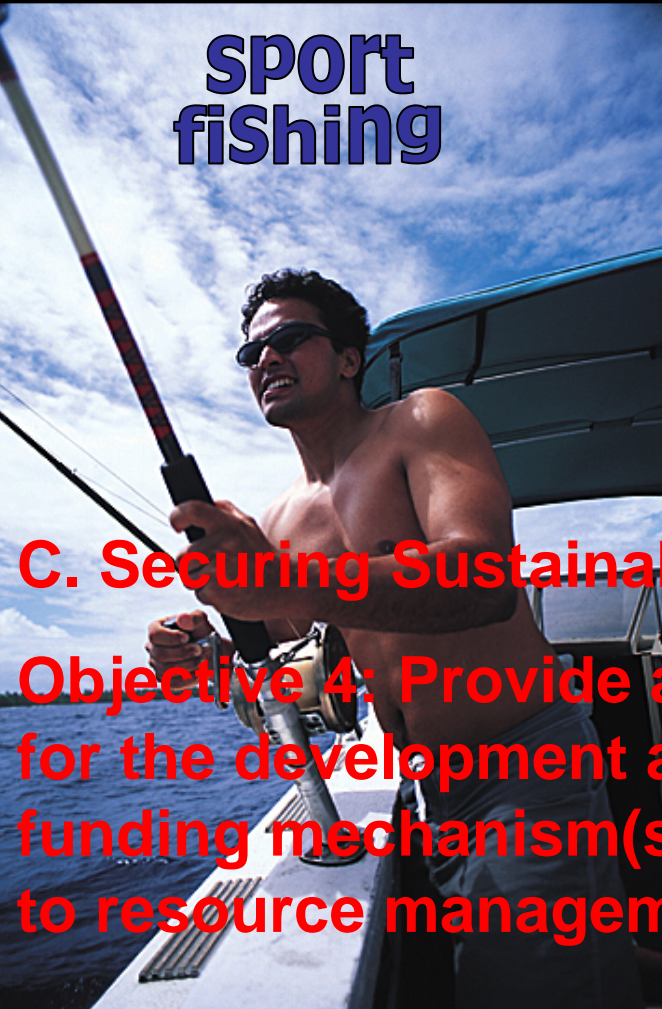
Objective 2: Provide advice, assistance and coordination for actions related to effective monitoring mechanisms throughout the RMI to measure and facilitate efforts to mitigate changes in our coastal environment by 2012.



B. Preserving our Natural Heritage

Objective 3: Provide advice, assistance and coordination to enable mechanisms for terrestrial and marine conservation areas declared by private land-owners or in uninhabited islands to compliment community based conservation and management efforts by 2007.





**Sport
fishing**

**Wreck
diving**

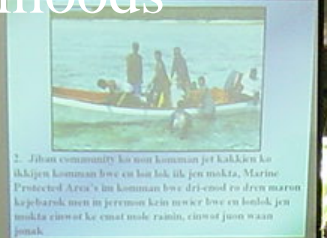
**reef
diving**

C. Securing Sustainable Finance

Objective 4: Provide advice, assistance and coordination for the development and implementation of sustainable funding mechanism(s) to support an ecosystem approach to resource management in perpetuity by 2008.

Marshall Islands Marine Resources Authority (MIMRA)

- Fishery Management Plans and Ordinances
- Sustainable Livelihoods



Office of Environmental Planning and Policy Coordination (OEPPC)

- Coordination of International Agreements
- CRTF Focal Point
- CBD Focal Point

RMI Environmental Protection Agency (RMIEPA)

- **Coastal Conservation**
- **Community Surveys**
- **Jaluit Conservation Area**
- **Solid Waste Management**

Marshall Islands Visitors Authority (MIVA)

- **Sustainable Tourism**
- **Solid Waste Management**

Ministry of Internal Affairs (IA)

- **Oversee Local Governments**
- **Coordinate with Land Owners**
- **Process Ordinances with the Attorney General**



Historic Preservation Office (HPO)

- **Preservation of Culture and Historical Significant Areas**



College of the Marshall Islands (CMI)

- Scientific Research and Surveys
- Institutional Support

Marshall Islands Conservation Society (MICS)

- Awareness
- Education
- Community Activities

Natural Resources Assessment Surveys (NRAS)

- Scientific Surveys
- Data Analysis and Reports



World Heritage Site Candidates

- Bikini Atoll
- Ailinginae Atoll
- Bikar Atoll
- Bokak Atoll
- Rongrik Atoll



Pilot Project

- Ailuk Atoll: Fishery Management Plan & Ordinances
 - Community Consultation
 - Biological Survey
 - Fisheries Management Plan
 - Ordinances
 - Coastal Management Plan
 - Sustainable Livelihood
 - Conservation Areas
 - Environmental Education





CHM

- Biodiversity Clearinghouse Mechanism (website) developed to facilitate sharing of biodiversity related information internally & externally
- Final modifications being undertaken to improve management of website in-country.
- Non internet means of accessing information currently under development (ie. CD-ROM & support to environmental education curriculum development)



www.biormi.org

A photograph of a person in a traditional outrigger canoe on the water. The canoe has a large teal sail and a person is visible in the cockpit. The background shows a blue sky and a distant shoreline.

'Mo' Research

- **Currently there is much support for integration of traditional and modern conservation practices however limited in depth information on traditional conservation practices ie. mo**
- **Mo research currently being undertaken targeting traditional leaders**
- **Information gathering & documentation of existing & past practices in conservation of resources before knowledge is lost**

A tropical beach scene with a line of palm trees in the background. The image is split horizontally: the top half shows the surface of the ocean under a cloudy sky, and the bottom half shows an underwater view of a vibrant coral reef. The text 'Kommol tata!' is overlaid in the center, and a list of names is overlaid in the lower-left quadrant.

Kommol tata!

Especially to:

The Nature Conservancy – Bill Raynor and Trina Leberer

Department of the Interior – Karen Koltes