

Recreation Facility Analysis



FINAL
5-year Program of Work
and
Programmatic Results of Implementation
FREMONT-WINEMA National Forests
June26, 2008

Recreation Facility Analysis

5-year Program of Work

FREMONT-WINEMA National Forest

Reviewed by: /s/ Karen Shimamoto Date: 6/25/08
FOREST SUPERVISOR
FREMONT-WINEMA National Forest

Reviewed by: /s/ Claire Lavendel Date: 7/8/08
ACTING REGIONAL RWHR DIRECTOR
Pacific Northwest Region

Concurrence: /s/ Liz Agpoa Date: 7/8/08
for REGIONAL FORESTER
Pacific Northwest Region

Table of Contents

<u>1.</u>	<u>INTRODUCTION</u>	<u>1</u>
<u>2.</u>	<u>SUMMARY - Programmatic Results of Implementation</u>	<u>2</u>
	A. BRIEF DESCRIPTION OF PROCESS.....	2
	B. FOREST RECREATION NICHE	3
	C. CRITICAL MONETARY FACTORS.....	6
	D. INVENTORY	7
	E. RESULTS.....	8
	F. PROPOSED MANAGEMENT ACTION SUMMARY	9
<u>3.</u>	<u>RECREATION SITES PRIORITY RANKING REPORT</u>	<u>10</u>
<u>4.</u>	<u>TABLE OF TASKS</u>	<u>14</u>
	A. SITE-SPECIFIC TASKS	14
	B. PROGRAMMATIC ACTIONS.....	19
	C. INVESTMENT PRIORITIES TO REDUCE DEFERRED MAINTENANCE.....	20
	D. DEFERRED MAINTENANCE REDUCTION ANALYSIS	22
<u>5.</u>	<u>APPENDIX</u>	<u>23</u>
	A. RECREATION SITE DEVELOPMENT SCALE GUIDE	23
	B. MANAGEMENT OPTION CODE LIST	25

1. INTRODUCTION

This document is a living, working road map to guide the Forest in providing a quality, sustainable recreation sites program. It describes the vision for the overall Forest recreation program and outlines proposals specific to individual developed recreation sites.

The proposals and guidance contained in this document were developed through, and are the end result of, the national Recreation Facility Analysis (RFA) process. Existing and projected visitor demands, recreation program niche, resource conditions, links to the community, program costs, and revenue were all considered in developing proposals.

This document will serve as a framework from which the Forest will prioritize investments, and pursue changes in operations or maintenance of recreation sites. Proposals are wholly consistent with the Pacific Northwest Region's "Recreation Strategy", and the Fremont-Winema Forest Land and Resource Management Plan.

The Forest recognizes that site-specific analysis and public involvement may be necessary prior to implementing some of the proposals contained in this document. As implementation of site-specific proposals are considered, they will be evaluated to determine if they are subject to the National Environmental Policy Act (NEPA) and all required procedures shall be executed.

The Forest also recognizes that proposals relating to fees will require consistency with criteria outlined in the Recreation Enhancement Act (REA) and coordination with the appropriate Recreation Resource Advisory Committee (RRAC).

2. SUMMARY - Programmatic Results of Implementation

A. BRIEF DESCRIPTION OF PROCESS

The purpose of the Recreation Facility Analysis process is to display the tasks needed over the next 5 years to bring the Forest's recreation infrastructure into alignment with the resources available to operate and maintain it to standard. Many of our facilities were built 30-50 years ago and have reached the end of their useful life without significant deferred maintenance investment. Other facilities receive no or little use, and no longer serve the demand that existed 30-50 years ago. The fundamental premise of the program of work is to create an inventory which is sufficiently sustainable and flexible to be adapted annually to any changes in available resources. The program of work has been developed to meet the following objectives:

- Operate and maintain sites to standard within available revenue stream.
- Reduce deferred maintenance by 20% over the 5 year life of the program of work.
- Focus available resources on sites which conform most closely to the Forest Recreation Program Niche.
- Maintain and enhance customer satisfaction with available sites.

The RFA process defines the proposed actions for management of forest recreation sites in order to meet the desired future condition that aligns with the Forest Plan. For purposes of the analysis and planning for future proposed actions, four categories (A-D) of proposed management are used. These categories are:

- 1) Category A: sites that are under some type of operational or contractual agreement whose terms are longer than the 5-year period of the RFA.
- 2) Category B: sites that meet the unit niche; are environmentally sustainable within the capability and capacity of the natural resources; are supported by and provide support to local communities; and have a sustainable management cost-benefit ratio.
- 3) Category C: sites that do not meet all of the above criteria, but with a combination of mitigation, additional resources, or other type of action could be made to qualify for Category B status.
- 4) Category D: sites that do not meet all of the (Category B) criteria; or fall sufficiently short in one or more of the criterion so as to render the capability of meeting it unsustainable. These sites may be managed for dispersed recreation opportunities.

Sites were evaluated and ranked based on conformance to the forest niche and amount of recreation use (35%), financial efficiency (35%), and environmental and community sustainability (30%).

Some sites were identified as non-discretionary based primarily on existing agreements such as concession permit.

B. FOREST RECREATION NICHE

FREMONT-WINEMA FOREST RECREATION NICHE – Final 6/08

Find Yourself in South Central Oregon

Framed by major migratory bird flyways the Fremont-Winema NF provides a picture of solitude and serene beauty in a spacious open landscape, from majestic snow-capped peaks, lakes and streams, to park-like stands of large ponderosa pines with a lush understory of grasses and wildflowers. Scenic routes throughout the forest provide easy access for visitors. Backcountry solitude experiences contrast with some nodes of concentrated water-based recreation.

Settings, Special Places, and Values

From desert to basalt rims, and from marshy wetlands to sparkling alpine lakes the forest offers spectacular views with open terrain in big sky country. The four primary settings are Great Basin Flyway, Mazama Pumice, Klamath Waterways and Flyway, and Cascade Crest.

Great Basin Flyway Uplifting volcanic activity resulted in basalt rims, high desert plateaus broken by streams and expansive marshes. The Basin Range Fault Block, an interface of arid desert-sage and lush pine-forest makes up a major part of the Fremont-Winema NF. On and off forest the eastern edge of the Fremont-Winema NF is a major north-south flyway. Solitude, spectacular views, and an ability to “get away from it all” while connecting with nature are prevalent through out this area. Gearhart Wilderness and roadless areas help perpetuate the feeling of solitude while the Outback National Scenic Byway showcases scenery and wildlife.

Mazama Pumice Mount Mazama created a landscape where rocks float and water sinks. The pumice soil supports lodge pole pine and stately ponderosa pine stands on a relatively flat terrain. Native American traditional tribal values are honored.

Klamath Waterways and Flyways a stopover and home to migratory birds, raptors and a variety of other birds is dominated by the large surface area of Klamath Lake. Multiple rivers, lakes and marshes feed this wildlife abundant area and act as a magnet for water based recreation and supporting facilities. These large marshy lakes and mountain rivers are home to endemic fish, plant, and wildlife species. Volcanic Legacy All-American Scenic Byway is a link from Cascade Crest to Crater Lake, yet solitude can be found within minutes along the lakes and marshes. Native American traditional tribal values are honored.

Cascade Crest features sparkling alpine lakes nestled in snow-capped peaks offering spectacular views and solitude. Primarily a designated wilderness, the area also serves as a gateway to Crater Lake National Park

Opportunities

Diverse settings that provide four-season recreation opportunities are within easy access to visitors participating in activities from snowmobiling to blue-ribbon fishing. Backcountry solitude experiences contrast with a few nodes of high density water-based recreation. Driving for pleasure on designated scenic routes throughout the forest offers opportunity for cultural, historic, natural, and geologic interpretation. The forest partners with communities to provide quality recreation opportunities and enhance the quality of life and economic viability of local communities.

Great Basin Flyway visitors participate in a wide range of day-use activities. To facilitate these activities, the Forest provides rustic forest camps and cabin rentals while resorts and guest ranches offer highly developed overnight facilities. Lakes & streams attract water-based concentrated recreation use. Outstanding activities include: big game hunting, blue ribbon trout fishing, well managed designated OHV routes, and a full range of dispersed winter sports; horseback riding, mountain biking, and hiking along the National Recreation Trail, other long distance and loop trails.

Mazama Pumice recognizes the tribal connection in the range of opportunities available in this area. Motorized winter use predominates yet summer activities include forest product gathering, hunting big game and blue-ribbon fly fishing.

Klamath Waterways and Flyway provides some of the most phenomenal bird-watching and blue-ribbon fishing on the east side of the cascades. Lake of the Woods and surrounding lakes are a mecca for highly social interaction. Outstanding activities are all water related including: fishing, boating, water-fowl hunting, camping, the High Lakes interpretive bike trail, and a one of a kind, ten-mile wildlife interpretive canoe trail.

Cascade Crest offers easy access to day-use activities such as lake fishing, a wide range of winter sports, horse use, and hiking, including the Pacific Crest Trail. Rustic facilities support these activities. Family traditional activities including mushrooming also occur.

Primary Visitors

Locals	Weekenders
From Klamath, Lake and Modoc Counties	From Southern Oregon and Northern California
5 to 45 minutes from activity “Backyard to Backcountry”	1 to 3 hours from activity
Strong attachment to the land – where the west still lives	Strong attachment to the land

Fremont-Winema NF Niche Bridge for Developed Recreation
Niche Emphasis: backcountry solitude, easy access, few nodes of concentrated water-based recreation
Question #1

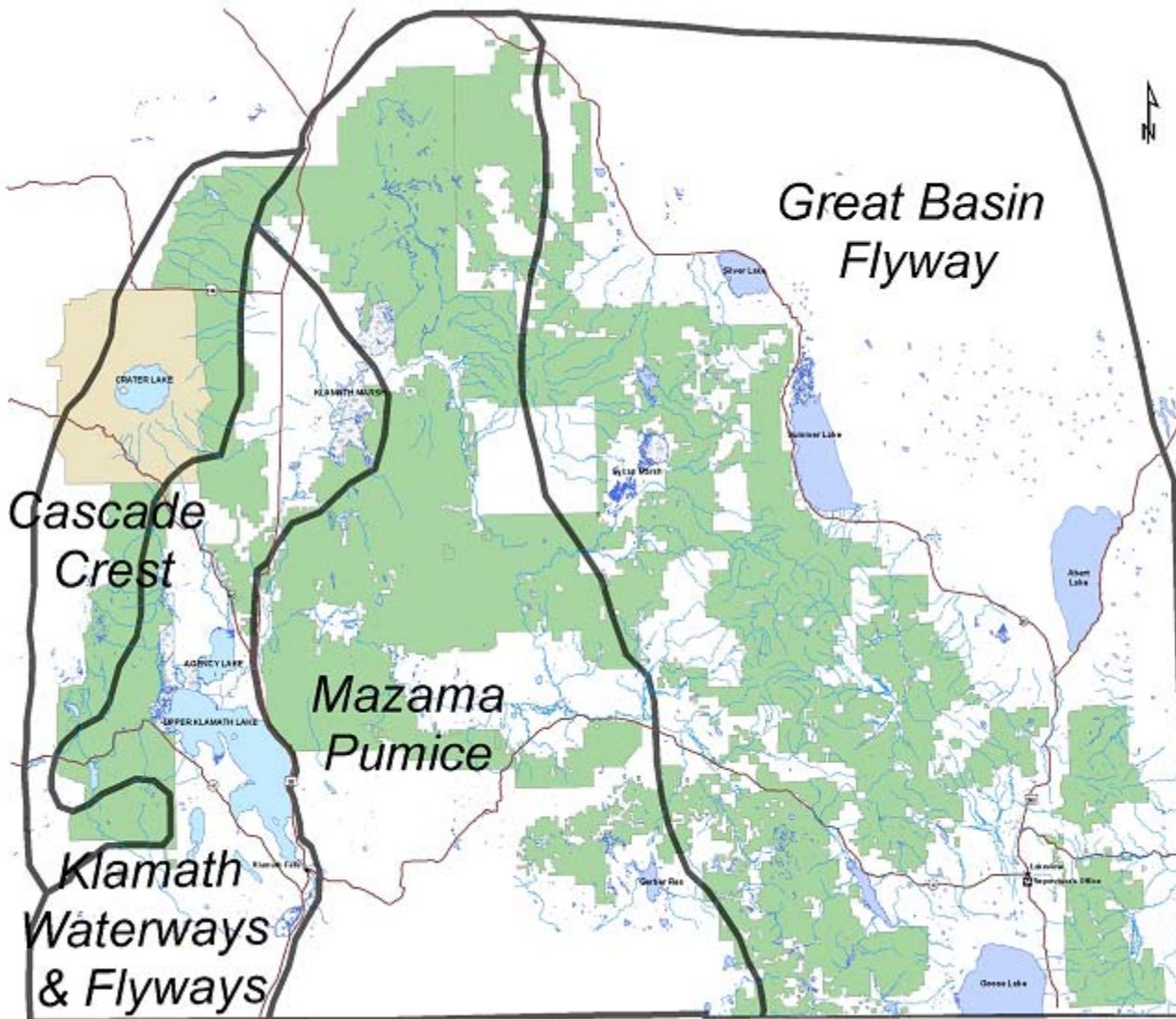
SETTING NAMES:		Great Basin Flyway		Mazama Pumice		Klamath Waterways & Flyways		Cascade Crest		
SETTING PRIORITY Which setting(s) best support rec sites? <i>Question #2</i>		Moderate		Low		Moderate		Moderate		
SITE FUNCTION/THEME: How sites are designed & managed to best meet the Niche <i>Question #3</i>		Facilitate access to rivers, lakes and routes for opportunities to enjoy the scenic beauty & wildlife of the forest.		Few sites and only as necessary to protect the natural resources.		Facilitate easy access to lakes for opportunities for getting close to nature. 'Backyard' for local communities.		Outside wilderness - facilitate access to alpine lakes & trails for day use opportunities.		
KEY ACTIVITIES: In support of the Niche for the coming decade <i>Question #4</i>		Big game hunting, blue ribbon trout fishing, motorized & non-motorized trails, dispersed winter sports		Recognizes tribal connection, motorized winter use, forest product gathering, big game hunting, fly fishing		Bird watching; blue-ribbon fishing; water related hunting, camping & interpretive trails; highly social Lake of the Woods		Day-use including fishing, winter sports, horse & hiking trails including PCT, forest product gathering		
INFRASTRUCTURE	SITE TYPE/ DEVELOPMENT SCALE Needed to provide key activities <i>Question #5 & Question #6</i> (Sites will be the lowest dev scale possible to maintain visitor experience & protect the resource)		Site Type	Dev Scale	Site Type	Dev Scale	Site Type	Dev Scale	Site Type	Dev Scale
			Campgrounds near water	3	Trailheads *	2-3	Campgrounds near water	3-4	Trailheads	2-3
			Camp Areas	1-2			Boat Launches	3-4	Snow shelters	2
			Trailheads *	2-3			Trailheads *	2-3		
			Interp sites on byways	2			Snow shelters	2		
			* - Trailheads only have toilets as needed to protect the resource							
	SITE CAPACITY Low <50, Medium 50-100, High >100 <i>Question #6</i>		Forest Camps, Interp sites & TH's - Low Campgrounds - Medium		Low		CG's - High Boat Launches - Medium Snow shelters - Low		Low	

Programmatic Strategies:

-Create a decision tree focusing on the developed overnight facilities outlining what is appropriate to support the various day use activities, the development scale, and who is best suited to provide it. The decision tree would cover a range from rustic development scale 2 forest camps to guest ranches and resorts.

-The over-all strategy is to rehabilitate developed sites to meet changing vehicular and equipment demands. The development scale should stay aligned with the experience and values provided by the opportunity. (No development scale creep) For example: Some roads may stay gravel, but turning radius and pull-outs will be designed to accommodate RV's. Toilet buildings will be vault if that's the appropriate development scale. Water will be centrally located rather than at every site.

-Some sites will be rehabilitated based on their ability to best meet demand in the appropriate locations. Overall the total number of facilities will decrease. For example: Scattered small picnic areas or trailheads cost more to operate and maintain than centralized, strategically placed facilities.



Fremont-Winema Recreational Niche Settings

C. CRITICAL MONETARY FACTORS

This matrix displays asset and expense information for the Forest Recreation Sites program before and after 5-year Program of Work development.

FREMONT-WINEMA National Forest				
A.	CRITICAL MONETARY FACTOR	BASELINE CONDITION (Benchmark Data)	Program of Work CHANGED CONDITION (does not include CATEGORY C or CATEGORY D sites)	Program of Work PERCENT CHANGE (does not include CATEGORY C or CATEGORY D sites)
OPERATIONAL ASSETS	APPROPRIATED FUNDS AVAILABLE	\$ 273,858	\$ 273,858	0%
	FEE RECEIPTS AVAILABLE	\$ 38,245	\$ 82,461	116%
	OTHER FUNDS AVAILABLE	\$ -	\$ -	0%
EXPENSES	OPERATING COSTS	\$ 276,395	\$ 220,466	-20%
	ANNUAL MAINTENANCE COSTS	\$ 137,690	\$ 123,732	-10%
	DEFERRED MAINTENANCE COSTS*	\$ 2,689,309	\$ 723,166	-73%

*-Deferred Maintenance included for all sites except CATEGORY D

Deferred Maintenance. "Maintenance that was not performed when it should have been or when it was scheduled and which, therefore, was put off or delayed for a future period."

When allowed to accumulate without limits or consideration of useful life, deferred maintenance leads to deterioration of performance, increased costs to repair, and decrease in asset value.

D. INVENTORY

The Inventory Matrix displays the recreation site inventory characteristics before and after 5-year Program of Work development. It displays by site type and displays other recreation site program characteristics including capacity, number of sites with drinking water and waste water systems, and the annual maintenance cost for drinking and waste water systems and buildings.

FREMONT-WINEMA National Forest					
B.	INVENTORY CHARACTERISTICS	BASELINE CONDITION (Benchmark Data)	PROGRAM OF WORK - CHANGED CONDITION	PROGRAM OF WORK - CHANGED CONDITION	PROGRAM OF WORK - CHANGED CONDITION
			CATEGORY A & B Sites	CATEGORY C Sites	CATEGORY D Sites
TIER SITE TYPE CATEGORY	CAMPGROUND DEV SCALE 2	6	6	0	0
	CAMPGROUND DEV SCALE 3	26	26	0	0
	CAMPGROUND DEV SCALE 4-5	6	6	0	0
	PICNIC SITE DEV SCALE 2-3	4	4	0	0
	PICNIC SITE DEV SCALE 4-5	2	2	0	0
	TRAILHEAD	19	19	0	0
	BOATING/ SWIM SITES/ FISHING SITES	3	3	0	0
	INTERP MAJOR/VC	0	0	0	0
	GROUP CAMPGROUND/ GROUP PICNIC	0	0	0	0
	CABINS/LOOK-OUTS	6	6	0	0
	INTERP MINOR/ OBSERVATION/ INFO SITES	3	3	0	0
	HORSE CAMP	3	3	0	0
	INFO SITE ADMIN	1	1	0	0
	SNOWPARKS	7	7	0	0
	OTHER 2	0	0	0	0
OTHER CHARACTERISTICS	CAPACITY (PAOT)**	7,102	6,870	0	0
	CAPACITY (PAOT-DAYS)**	1,683,612	1,296,617	0	0
	# SITES w/ DRINKING WATER SYSTEM \$	25	25	0	0
	# SITES w/ WASTEWATER SYSTEM \$	0	0	0	0
	DW SYSTEM ANNUAL MAINT COST	\$ 67,684	\$ 67,684	\$ -	\$ -
	WW SYSTEM ANNUAL MAINT COST	\$ -	\$ -	\$ -	\$ -
	BUILDING ANNUAL MAINT COST	\$ 70,006	\$ 70,006	\$ -	\$ -

**Sum of CATEGORY A&B, C and D columns do not equal Baseline column due to capacity changes in CATEGORY A and B sites

E. RESULTS

The Results Matrix describes the significant programmatic results of the ranking process

FREMONT-WINEMA National Forest				
C1.	PROGRAMMATIC RESULTS	BASELINE CONDITION (Benchmark Data)	PROGRAM OF WORK - CHANGED CONDITION (does not include CATEGORY C and D sites)	Program of Work PERCENT CHANGE (does not include CATEGORY C and D sites)
METRICS	AVERAGE NICHE CONFORMANCE SCORE	15.29	15.29	0%
	AVERAGE DEVELOPMENT SCALE	2.97	2.97	0%
	AVERAGE UNDERSERVED POPULATION SCORE	1.87	1.87	0%
	% OF CAPACITY ACCESSIBLE	0.0%	0.0%	0%
	% OF CAPACITY W/ ACCESSIBLE FURNISHINGS ONLY	0.0%	0.0%	0%
	PAOT-DAYS TO REGIONAL REQUIRED STANDARDS	1,082,649	1,296,617	20%
	CAPACITY (PAOT)	7,102	6,870	-3%
	CAPACITY (PAOT-DAYS)	1,683,612	1,296,617	-23%
	ANNUAL O&M COST PER PAOT DAY	\$ 0.29	\$ 0.27	-8%
	ANNUAL NET O&M COST PER VISIT	\$ 1.35	\$ 1.18	-13%

C2.	PROGRAMMATIC RESULTS	BASELINE CONDITION (Benchmark Data)	PROGRAM OF WORK - CHANGED CONDITION (does not include CATEGORY D sites)	Program of Work PERCENT CHANGE (does not include CATEGORY D sites)
	TOTAL DEFERRED MAINTENANCE	\$ 2,689,309	\$ 723,166	-73%

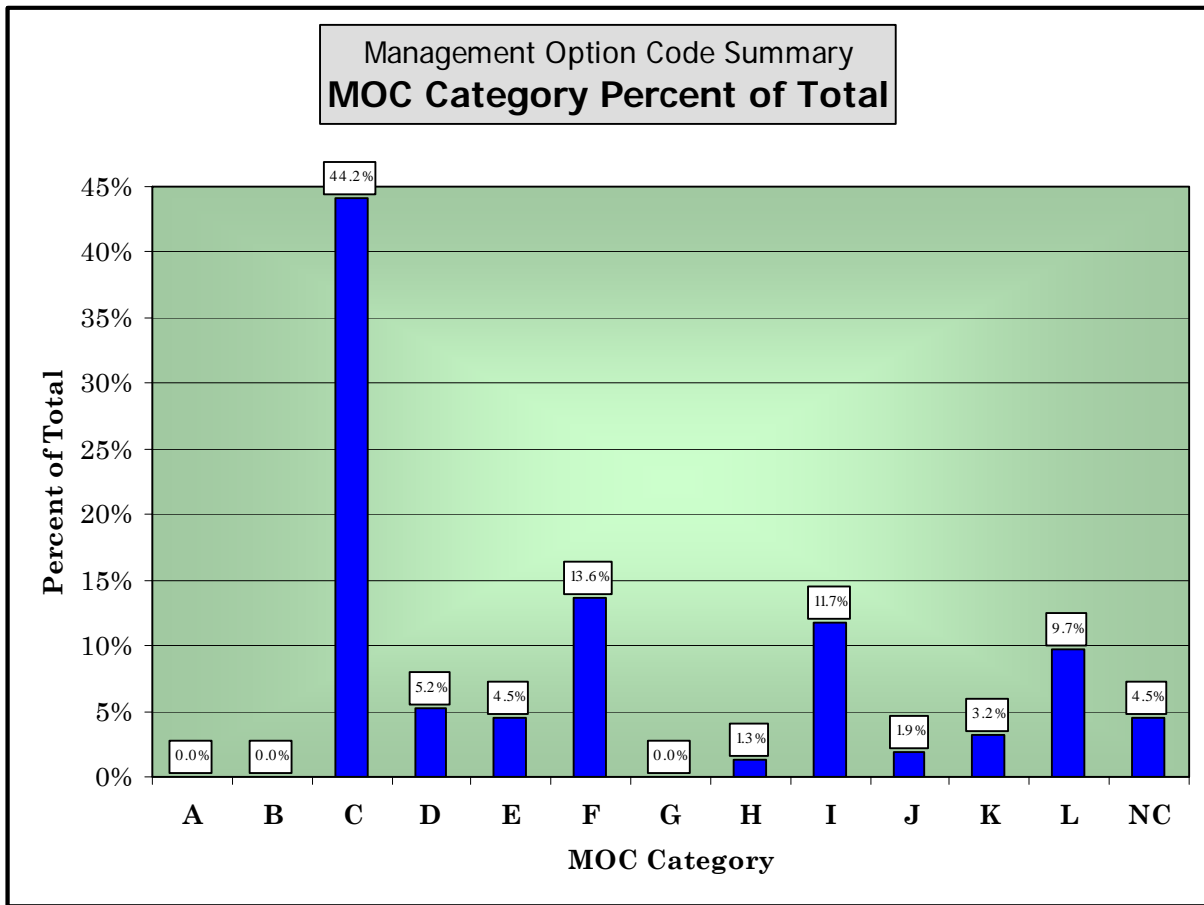
Annual O&M Cost per visit and per PAOT day are averages derived from a summation of ALL the 86 analyzed recreation facilities on the Forest; the cost per visit and per PAOT for each site and site type will vary.

PAOT - An acronym for Persons-At-One-Time; a measure of facility or site designed recreation carrying capacity, particularly for developed sites. National conventions include 5 persons per family picnic/camp unit, 3.5 persons per parking lot stall at a trailhead or visitor center, 1.5 persons per motorcycle parking stall and 40 persons per tour bus parking stall.

O&M - Operations and maintenance; includes the activities and resources required to annually operate and maintain recreation sites at a level of quality which meets their management objectives and customer satisfaction. Costs associated with O&M are generally recurrent, as opposed to capital investment costs that are generally one-time and non-recurrent.

F. PROPOSED MANAGEMENT ACTION SUMMARY

FREMONT-WINEMA National Forest Management Option Code Summary		
MANAGEMENT OPTION CODE CATEGORY	OPTION CODE COUNT	PERCENT OF TOTAL
A-DECOMMISSION	0	0.0%
B-CLOSURE	0	0.0%
C-CHANGE SEASON	68	44.2%
D-REMOVE OR ELIMINATE COST SOURCE OR SERVICE SEASON	8	5.2%
E-REDUCE SERVICE FREQUENCY	7	4.5%
F-INCREASE/IMPROVE SERVICES	21	13.6%
G-CONSTRUCT A NEW AREA	0	0.0%
H-CHANGE OPERATOR	2	1.3%
I-CHANGE FEES	18	11.7%
J-CHANGE CAPACITY	3	1.9%
K-SITE CONVERSION	5	3.2%
L-REPLACEMENT/REPAIR	15	9.7%
NC-NO CHANGE	7	4.5%



3. RECREATION SITES PRIORITY RANKING REPORT

The Forest’s Recreation Sites Priority Ranking Report lists recreation sites in rank score priority order. Ranking is based on how well a site meets the four objectives of the RFA analysis. (Objectives are listed page 2). Tier Category designations are based on initial ranking and Forest Leadership Team analysis.

8. REPORT: 5-Year Program of Work - Table of Ranked Site Planned Operating Season & Capacity

MNG ORG	SITE NAME	SITE TYPE	TOTAL RANK SCORE	TIER CATEGORY	PLANNED OPENING DATE	PLANNED CLOSING DATE	PLANNED CAPACITY [PAOT]
60204	SILVER CREEK MARSH	CAMPGROUND	82	CATEGORY B	1-Apr	15-Nov	120
62003	RAINBOW DAY USE AREA	PICNIC SITE	82	CATEGORY B	1-May	30-Oct	558
60202	DRAKE PEAK LOOKOUT RECREATION SITE	FIRE LOOKOUTS/CABINS OVERNIGHT	80	CATEGORY B	15-May	15-Nov	9
62003	SUNSET CAMPGROUND	CAMPGROUND	79	CATEGORY B	25-May	6-Sep	489
62001	DIGIT POINT CAMPGROUND	CAMPGROUND	78	CATEGORY B	30-May	15-Oct	320
62003	ROCKY POINT BOAT LAUNCH	BOATING SITE	78	CATEGORY B	1-Apr	15-Nov	28
62003	COLDSPRINGS TRAILHEAD	TRAILHEAD	77	CATEGORY B	15-Jun	30-Sep	55
60204	THOMPSON	CAMPGROUND	75	CATEGORY B	1-Apr	15-Nov	105
62001	DIGIT POINT BOATING SITE	BOATING SITE	75	CATEGORY B	30-May	30-Sep	80
62003	ANNIE CREEK SNO-PARK	SNOWPARK	75	CATEGORY B	1-Jan	31-Dec	75
62003	ASPEN POINT CG	CAMPGROUND	75	CATEGORY B	29-May	6-Sep	932
62003	MT MCLOUGHLIN TRAILHEAD	TRAILHEAD	74	CATEGORY B	25-Jun	30-Sep	91
60203	MARSTER SPRING CAMPGROUND	CAMPGROUND	73	CATEGORY B	15-May	15-Nov	50
62003	GREAT MEADOW SNO-PARK	SNOWPARK	73	CATEGORY B	1-Jan	31-Dec	402
60202	ASPEN CABIN RECREATION SITE	FIRE LOOKOUTS/CABINS OVERNIGHT	70	CATEGORY B	1-May	15-Nov	9
60202	DOG LAKE	CAMPGROUND	70	CATEGORY B	1-Apr	15-Nov	132
60202	ROGGER TRAILHEAD	TRAILHEAD	69	CATEGORY B	15-May	15-Nov	42
62001	DIGIT POINT DAY USE AREA	PICNIC SITE	68	CATEGORY B	30-May	15-Oct	60
60201	CORRAL CREEK	CAMPGROUND	66	CATEGORY B	1-Apr	15-Nov	30
60202	COTTONWOOD COMPLEX	CAMPGROUND	66	CATEGORY B	15-May	15-Nov	280
60204	SILVER CREEK MARSH TRAILHEAD	TRAILHEAD	66	CATEGORY B	15-Mar	15-Nov	30
62002	WILLIAMSON RIVER CAMPGROUND	CAMPGROUND	66	CATEGORY B	1-May	30-Oct	115
62003	ODESSA CAMPGROUND	CAMPGROUND	66	CATEGORY B	1-Apr	15-Nov	30
62003	FOURMILE LAKE CAMPGROUND	CAMPGROUND	65	CATEGORY B	25-Jun	30-Oct	180
60204	FARM WELL HORSE CAMP	TRAILHEAD	64	CATEGORY B	1-May	15-Nov	25
60201	QUARTZ MOUNTAIN	SNOWPARK	63	CATEGORY B	1-Jan	31-Dec	49
60203	MOSS MEADOW	HORSE CAMP	63	CATEGORY B	15-May	15-Oct	30
62001	CHEMULT REC SITE/WALT HARING SNO PARK	SNOWPARK	63	CATEGORY B	1-Jan	31-Dec	170
60203	WITHERS LAKE TRAILHEAD	TRAILHEAD	62	CATEGORY B	15-May	15-Nov	28
60204	HARRIS TH	HORSE CAMP	62	CATEGORY B	1-Jun	15-Nov	25
62003	SEVENMILE MARSH TRAILHEAD	TRAILHEAD	62	CATEGORY B	15-Jun	30-Oct	70
60203	BALD BUTTE LOOKOUT RECREATION SITE	CAMPGROUND	61	CATEGORY B	1-Jun	15-Sep	5
60203	JONES CROSSING FOREST CAMP	CAMPGROUND	61	CATEGORY B	15-May	15-Nov	40
60204	HAGER MOUNTAIN LOOKOUT RECREATION SITE	FIRE LOOKOUTS/CABINS OVERNIGHT	61	CATEGORY B	15-May	15-Nov	5

MNG ORG	SITE NAME	SITE TYPE	TOTAL RANK SCORE	TIER CATEGORY	PLANNED OPENING DATE	PLANNED CLOSING DATE	PLANNED CAPACITY [PAOT]
62003	SUMMIT SNO-PARK/PCT TRAILHEAD	SNOWPARK	61	CATEGORY B	1-Jan	31-Dec	158
60202	SOUTH FORK CROOKED CREEK TRAILHEAD	TRAILHEAD	60	CATEGORY B	15-May	15-Nov	35
60202	WALKER TRAILHEAD	TRAILHEAD	60	CATEGORY B	15-May	15-Nov	35
60204	EASTBAY	CAMPGROUND	60	CATEGORY B	1-May	15-Nov	110
60201	HEART LAKE	FISHING SITE	59	CATEGORY B	15-May	15-Nov	25
60203	CAMPBELL LAKE CAMPGROUND	FIRE LOOKOUTS/CABINS OVERNIGHT	59	CATEGORY B	1-Jun	15-Oct	135
60203	CHEWAUCAN CROSSING TRAILHEAD	CAMPGROUND	59	CATEGORY B	15-May	31-Oct	65
60201	LOFTON RESERVOIR	CAMPGROUND	58	CATEGORY B	15-May	15-Nov	150
60202	CAMAS SNOW PARK	SNOWPARK	58	CATEGORY B	1-Jan	31-Dec	98
60202	DREWS CREEK	CAMPGROUND	58	CATEGORY B	1-Apr	15-Nov	62
60203	DEADHORSE TRAILHEAD	CAMPGROUND	57	CATEGORY B	1-Jun	30-Oct	28
60202	VEE LAKE CAMPGROUND & TRAILHEAD	CAMPGROUND	56	CATEGORY B	15-May	15-Nov	33
62002	SPRING CREEK CAMPGROUND	CAMPGROUND	55	CATEGORY B	1-May	30-Sep	58
60202	COTTONWOOD	TRAILHEAD	53	CATEGORY B	15-May	15-Nov	70
60203	DEADHORSE LAKE CAMPGROUND	CAMPGROUND	53	CATEGORY B	1-Jun	15-Oct	135
60204	LOWER BUCK CREEK	CAMPGROUND	53	CATEGORY B	1-May	30-Nov	25
60203	HAPPY CAMP	TRAILHEAD	52	CATEGORY B	15-May	15-Nov	45
60202	WILLOW CREEK CAMPGROUND	CAMPGROUND	51	CATEGORY B	15-May	15-Nov	96
60203	DAIRY POINT CAMPGROUND	HORSE CAMP	51	CATEGORY B	15-May	15-Nov	20
60203	HADLEY BUTTE LAUNCH SITE	TRAILHEAD	51	CATEGORY B	15-May	15-Nov	23
60204	ANTLER TRAILHEAD	TRAILHEAD	51	CATEGORY B	1-Jun	15-Nov	35
62002	WOOD RIVER DAY-USE AREA	PICNIC SITE	51	CATEGORY B	1-May	30-Oct	19
60201	SPRAGUE RIVER PARK	PICNIC SITE	50	CATEGORY B	1-Mar	15-Nov	120
60203	MOSS PASS TRAILHEAD	TRAILHEAD	50	CATEGORY B	15-May	15-Oct	0
62001	JACKSON CREEK	CAMPGROUND	50	CATEGORY B	15-May	15-Oct	60
60202	CAN SPRINGS CAMPGROUND	CAMPGROUND	49	CATEGORY B	15-May	30-Sep	0
60202	COX PASS	TRAILHEAD	48	CATEGORY B	1-Apr	15-Nov	0
60201	DEMING CREEK TRAILHEAD	TRAILHEAD	47	CATEGORY B	1-Apr	15-Nov	35
60201	HOLBROOK RESERVOIR	CAMPGROUND	47	CATEGORY B	15-May	15-Nov	0
60201	MITCHELL MONUMENT	INTERPRETIVE SITE (MINOR)	47	CATEGORY B	1-Apr	15-Nov	80
60202	TWIN SPRINGS CAMPGROUND	CAMPGROUND	47	CATEGORY B	15-May	15-Nov	0
62003	CRYSTAL SPRINGS PICNIC SITE	PICNIC SITE	47	CATEGORY B	1-Jan	31-Dec	18
60203	CLEAR SPRING	TRAILHEAD	46	CATEGORY B	15-May	30-Sep	10
60203	CURRIER HORSE CAMP	FIRE LOOKOUTS/CABINS OVERNIGHT	46	CATEGORY B	1-Jun	31-Oct	15
60201	HORSEGLADES TRAILHEAD	TRAILHEAD	45	CATEGORY B	1-Apr	15-Nov	0
60202	MUD CREEK CAMPGROUND	CAMPGROUND	45	CATEGORY B	15-May	15-Nov	77
60202	NORTH WARNER VIEWPOINT	PICNIC SITE	45	CATEGORY B	15-May	15-Nov	9
60202	DEEP CREEK CAMPGROUND	CAMPGROUND	44	CATEGORY B	1-May	15-Nov	58
60203	LEE THOMAS TRAILHEAD	TRAILHEAD	44	CATEGORY B	1-Jun	15-Oct	18
62002	HEAD OF THE RIVER CAMPGROUND	CAMPGROUND	43	CATEGORY B	1-May	30-Oct	25
60202	DISMAL CREEK CAMPGROUND	CAMPGROUND	41	CATEGORY B	1-May	15-Nov	36
62003	PELICAN RESIDENCE BUILDING	INTERPRETIVE SITE (ADMIN)	41	CATEGORY B	1-May	30-Oct	2
60203	LEE THOMAS CAMPGROUND	CAMPGROUND	40	CATEGORY B	1-Jun	15-Oct	0
62001	CORRAL SPRINGS CAMPGROUND	CAMPGROUND	40	CATEGORY B	20-Mar	19-Oct	30

MNG ORG	SITE NAME	SITE TYPE	TOTAL RANK SCORE	TIER CATEGORY	PLANNED OPENING DATE	PLANNED CLOSING DATE	PLANNED CAPACITY [PAOT]
60203	SANDHILL CROSSING CAMPGROUND	CAMPGROUND	37	CATEGORY B	1-Jun	15-Oct	40
62003	PELICAN FIRE LOOKOUT	FIRE LOOKOUTS/CABINS OVERNIGHT	37	CATEGORY B			0
60203	CURRIER GUARD STATION RECREATION SITE	CAMPGROUND	35	CATEGORY B	1-Jun	15-Oct	5
60203	HANAN SYCAN TRAILHEAD	SNOWPARK	35	CATEGORY B	15-May	15-Nov	35
60202	OVERTON RESERVOIR	CAMPGROUND	33	CATEGORY B	1-May	15-Nov	15
62002	OUX KANEE OVERLOOK	OBSERVATION SITE	32	CATEGORY B	1-May	30-Oct	28
60203	HADLEY SNO-PARK	OBSERVATION SITE	31	CATEGORY B	1-Dec	15-May	0
62001	SCOTT CREEK	CAMPGROUND	29	CATEGORY B	30-May	15-Oct	30

MNG ORG – Managing Organization Number; first number denotes the Region, the next two numbers the Forest, and the last two numbers the Ranger District.

EX: 6 = Pacific Northwest Region (Region 6)
 02 = Fremont-Winema National Forest
 01 = Bly Ranger District
 02 = Lakeview Ranger District
 03 = Paisley Ranger District
 04 = Silver Lake Ranger District
 11 = Chemult Ranger District
 12 = Chiloquin Ranger District
 13 = Klamath Ranger District

4. TABLE OF TASKS

A. SITE-SPECIFIC TASKS

The Site-Specific Tasks table lists tasks (Management Option Codes), one-time cost to implement and pertinent documentation for each recreation site. Only sites with proposed management changes are listed.

FREMONT-WINEMA National Forest	\$336,500	TOTAL ONE-TIME COST TO IMPLEMENT TASKS
--------------------------------	------------------	--

8a. INFO ENTRY: 5-Year Proposed Program of Work - Table of Tasks							
MNG ORG	SITE NAME	MOC	TASK	START DATE	FINISH DATE	ONE-TIME COST TO IMPLEMENT ACTION	TASK COMMENTS
60201	CORRAL CREEK	NC1	No change - currently USFS operate.	FY08	FY12	\$0	Operate site from April 1 to Nov. 15.
60201	DEMING CREEK TRAILHEAD	C2	Reduce season of use at site.	FY08	FY12	\$0	Operate site from April 1 to Nov. 15.
60201	HEART LAKE	C2	Reduce season of use at site.	FY08	FY12	\$0	Operate site from May 15 to Nov. 15.
60201	HOLBROOK RESERVOIR	C2	Reduce season of use at site.	FY08	FY12	\$0	Operate site from May 15 to Nov. 15.
60201	HORSEGLADES TRAILHEAD	C2	Reduce season of use at site.	FY08	FY12	\$0	Operate site from April 1 to Nov. 15.
60201	LOFTON RESERVOIR	C2,F6,I3	Reduce season of use at site. Upgrade existing features (new well and parking spars). Begin charging a Rec Fee at site.	FY09	FY11	\$0	Operate site from May 15 to Nov. 15. Work through REA board to implement Rec Fee at site. Upgrade of site is with State of Oregon funds and or CIP (\$45,000).
60201	MITCHELL MONUMENT	C2	Reduce season of use at site.	FY08	FY12	\$0	Operate site from April 1 to Nov. 15.
60201	QUARTZ MOUNTAIN	NC1	No change - currently USFS operate.	FY08	FY12	\$0	Operate site from Jan. 1 to Dec. 31.
60201	SPRAGUE RIVER PARK	C2	Reduce season of use at site.	FY08	FY12	\$0	Operate site from May 15 to Nov. 15. Need to sign or close gate during winter for traffic safety (icy road).
60202	ASPEN CABIN RECREATION SITE	C2,I4	Reduce season of use at site. Increase current Rec Fee at site.	FY09	FY11	\$0	Operate site from May 1 to Nov. 15. Work through REA board to increase Rec Fee at site. Recommend Rec Fee increase to \$50.00 per night.
60202	CAMAS SNOW PARK	NC1	No change - currently USFS operate.	FY08	FY12	\$0	Operate site from Jan. 1 to Dec. 31.
60202	CAN SPRINGS CAMPGROUND	C2,L1	Reduce season of use at site. Replace existing constructed feature (new toilet building) to reduce deferred maintenance.	FY09	FY11	\$0	Operate site from May 15 to Sept. 30. See - Investment priorities to reduce Deferred Maintenance.
60202	COTTONWOOD	C2	Reduce season of use at site.	FY08	FY12	\$0	Operate site from May 15 to Nov. 15.
60202	COTTONWOOD COMPLEX	C2,I3,L1	Reduce season of use at site. Begin charging a Rec Fee at site. Replace existing constructed feature (new toilet building) to reduce deferred maintenance.	FY09	FY11	\$0	Operate site from May 15 to Nov. 15. Work through REA board to implement Rec Fee at site. See - Investment priorities to reduce Deferred Maintenance.
60202	COX PASS	C2,D3,E6	Reduce season of use at site. Remove toilet building. Reduce frequency of services at site.	FY08	FY09	\$2,000	Operate site from April 1 to Nov. 15. Build new segment of trail that connects to near be trail. Manage site as a General Forest Area.

60202	DEEP CREEK CAMPGROUND	C2	Reduce season of use at site.	FY08	FY12	\$0	Operate site from May 1 to Nov. 15.
60202	DISMAL CREEK CAMPGROUND	C2,E6,K1, K2	Reduce season of use at site. Reduce frequency of services at site. Change in development scale from 2 to 1. Change site type to GFA - Camping Area.	FY08	FY10	\$3,000	Operate site from May 1 to Nov. 15. Remove all constructed features from site and manage as a General Forest Area camping site.
60202	DOG LAKE	C2,I3,L2	Reduce season of use at site. Begin charging a Rec Fee at site. Repair existing constructed features (parking spars, water system and fence) to reduce deferred maintenance.	FY09	FY11	\$0	Operate site from April 1 to Nov. 15. Work through REA board to implement Rec Fee at site. See - Investment priorities to reduce Deferred Maintenance.
60202	DRAKE PEAK LOOKOUT RECREATION SITE	C2,I4	Reduce season of use at site. Increase current Rec Fee at site.	FY09	FY11	\$0	Operate site from May 15 to Nov. 15. Work through REA board to increase Rec Fee at site.
60202	DREWS CREEK	C2	Reduce season of use at site.	FY08	FY12	\$0	Operate site from April 1 to Nov. 15.
60202	MUD CREEK CAMPGROUND	C2	Reduce season of use at site.	FY08	FY12	\$0	Operate site from May 15 to Nov. 15.
60202	NORTH WARNER VIEWPOINT	C2	Reduce season of use at site.	FY08	FY12	\$0	Operate site from May 15 to Nov. 15.
60202	OVERTON RESERVOIR	C2,E6,K1, K2	Reduce season of use at site. Reduce frequency of services at site. Change in development scale from 2 to 1. Change site type to GFA - Camping Area.	FY08	FY10	\$3,000	Operate site from May 1 to Nov. 15. Remove all constructed features from site and manage as a General Forest Area camping site.
60202	ROGGER TRAILHEAD	C2,L1	Reduce season of use at site. Replace existing constructed feature (new toilet building) to reduce deferred maintenance.	FY09	FY11	\$0	Operate site from May 15 to Nov. 15. See - Investment priorities to reduce Deferred Maintenance.
60202	SOUTH FORK CROOKED CREEK TRAILHEAD	C2	Reduce season of use at site.	FY08	FY12	\$0	Operate site from May 15 to Nov. 15.
60202	TWIN SPRINGS CAMPGROUND	C2	Reduce season of use at site.	FY08	FY12	\$0	Operate site from May 15 to Nov. 15.
60202	VEE LAKE CAMPGROUND & TRAILHEAD	C2	Reduce season of use at site.	FY08	FY12	\$0	Operate site from May 15 to Nov. 15.
60202	WALKER TRAILHEAD	C2	Reduce season of use at site.	FY08	FY12	\$0	Operate site from May 15 to Nov. 15.
60202	WILLOW CREEK CAMPGROUND	C2,D8	Reduce season of use at site. Remove water system from site.	FY08	FY11	\$20,000	Operate site from May 15 to Nov. 15.
60203	BALD BUTTE LOOKOUT RECREATION SITE	C2,I4	Reduce season of use at site. Increase current Rec Fee at site.	FY09	FY11	\$0	Operate site from June 1 to Sept. 15. Work through REA board to increase Rec Fee at site.
60203	CAMPBELL LAKE CAMPGROUND	C2,I3	Reduce season of use at site. Begin charging a Rec Fee at site.	FY09	FY11	\$0	Operate site from June 1 to Oct. 15. Work through REA board to implement Rec Fee at site.
60203	CHEWAUCAN CROSSING TRAILHEAD	C1	Increase season of use at site.	FY08	FY12	\$0	Operate site from May 15 to Oct. 31.
60203	CLEAR SPRING	C2	Reduce season of use at site.	FY08	FY12	\$0	Operate site from May 15 to Sept. 15.
60203	CURRIER GUARD STATION RECREATION SITE	C2,I4	Reduce season of use at site. Increase current Rec Fee at site.	FY09	FY11	\$0	Operate site from June 1 to Oct. 15. Work through REA board to increase Rec Fee at site. Recommend Rec Fee increase to \$50.00 per night.
60203	CURRIER HORSE CAMP	C2	Reduce season of use at site.	FY08	FY12	\$0	Operate site from June 1 to Oct. 31.
60203	DAIRY POINT CAMPGROUND	C1	Increase season of use at site.	FY08	FY12	\$0	Operate site from May 15 to Nov. 15.

60203	DEADHORSE LAKE CAMPGROUND	C2,I3	Reduce season of use at site. Begin charging a Rec Fee at site.	FY09	FY11	\$0	Operate site from June 1 to Oct. 15. Work through REA board to implement Rec Fee at site.
60203	DEADHORSE TRAILHEAD	NC1	No change - currently USFS operate.	FY08	FY12	\$0	Operate site from June 1 to Oct. 31.
60203	HADLEY BUTTE LAUNCH SITE	D4	Remove tables and firerings.	FY08	FY09	\$500	Operate site from May 15 to Nov. 15.
60203	HADLEY SNO-PARK	C2	Reduce season of use at site.	FY08	FY12	\$0	Operate site from Dec. 1 to May 15.
60203	HANAN SYCAN TRAILHEAD	C1	Increase season of use at site.	FY08	FY12	\$0	Operate site from May 15 to Nov. 15.
60203	HAPPY CAMP	C1	Increase season of use at site.	FY08	FY12	\$0	Operate site from May 15 to Nov. 15.
60203	JONES CROSSING FOREST CAMP	C1	Increase season of use at site.	FY08	FY12	\$0	Operate site from May 15 to Nov. 15.
60203	LEE THOMAS CAMPGROUND	C2	Reduce season of use at site.	FY08	FY12	\$0	Operate site from June 1 to Oct. 15.
60203	LEE THOMAS TRAILHEAD	C2,D3,E6	Reduce season of use at site. Remove toilet building. Reduce frequency of services at site.	FY09	FY11	\$3,000	Operate site from June 1 to Oct. 15.
60203	MARSTER SPRING CAMPGROUND	C1,I3	Increase season of use at site. Begin charging a Rec Fee at site.	FY09	FY11	\$0	Operate site from May 15 to Nov. 15. Work through REA board to implement Rec Fee at site.
60203	MOSS MEADOW	C2	Reduce season of use at site.	FY08	FY12	\$0	Operate site from May 15 to Oct. 15.
60203	MOSS PASS TRAILHEAD	C2,D3,E6	Reduce season of use at site. Remove toilet building. Reduce frequency of services at site.	FY09	FY11	\$3,000	Operate site from May 15 to Oct. 15.
60203	SANDHILL CROSSING CAMPGROUND	C2	Reduce season of use at site.	FY08	FY12	\$0	Operate site from June 1 to Oct. 15.
60203	WITHERS LAKE TRAILHEAD	C2	Reduce season of use at site.	FY08	FY12	\$0	Operate site from May 15 to Nov. 15.
60204	ANTLER TRAILHEAD	C2	Reduce season of use at site.	FY08	FY12	\$0	Operate site from June 1 to Nov. 15.
60204	EASTBAY	I4,L2	Increase current Rec Fee at site. Repair existing constructed feature (well for water system) to reduce deferred maintenance.	FY09	FY11	\$12,000	Operate site from May 1 to Nov. 15. Work through REA board to increase Rec Fee at site. See - Investment priorities to reduce Deferred Maintenance.
60204	FARM WELL HORSE CAMP	C1,D8	Increase season of use at site. Remove or close water system from site.	FY08	FY10	\$10,000	Operate site from May 1 to Nov. 15.
60204	HAGER MOUNTAIN LOOKOUT RECREATION SITE	C1,I4	Increase season of use at site. Increase current Rec Fee at site.	FY09	FY11	\$0	Operate site from May 15 to Nov. 15. Work through REA board to increase Rec Fee at site.
60204	HARRIS TH	C1,H2	Increase season of use at site. Operate through a partner agreement with local horse group.	FY08	FY11	\$0	Operate site from June 1 to Nov. 15.
60204	LOWER BUCK CREEK	C2,F16,E6	Reduce season of use at site. Install gate to help decrease season of use. Reduce frequency of services at site.	FY08	FY10	\$6,000	Operate site from May 1 to Nov. 30.
60204	SILVER CREEK MARSH	C2,F13,I3,L2	Reduce season of use at site. Improve signing at site (bulletin board). Begin charging a Rec Fee at site. Repair existing constructed feature (water system) to reduce deferred maintenance.	FY09	FY11	\$4,000	Operate site from April 15 to Nov. 15. Work through REA board to implement Rec Fee at site. See - Investment priorities to reduce Deferred Maintenance.

62024	SILVER CREEK MARSH TRAILHEAD	C2,I3	Reduce season of use at site. Begin charging a Rec Fee at site.	FY09	FY11	\$0	Operate site from March 15 to Nov. 15. Work through REA board to implement Rec Fee at site.
62024	THOMPSON	C1,F6,I3	Increase season of use at site. Upgrade parking spars. Begin charging a Rec Fee at site.	FY09	FY11	\$0	Operate site from April 15 to Nov. 15. Work through REA board to implement Rec Fee at site. Upgrade of site is with State of Oregon funds and or CIP (\$35,000).
62001	CHEMULT REC SITE/WALT HARING SNO PARK	F6,I3	Begin charging a Rec Fee at site. Upgrade existing features at site (pullout's for RV).	FY09	FY11	\$20,000	Operate site from Jan. 1 to Dec. 31. Work through REA board to implement Rec Fee at site.
62001	CORRAL SPRINGS CAMPGROUND	L1	Replace existing constructed feature (new toilet building) to reduce deferred maintenance.	FY09	FY11	\$0	Operate site from March 20 to Oct. 19. See - Investment priorities to reduce Deferred Maintenance.
62001	DIGIT POINT BOATING SITE	C2,F13	Reduce season of use at site. Improve signing at site.	FY08	FY11	\$3,000	Operate site from May 30 to Sept. 30.
62001	DIGIT POINT CAMPGROUND	C2,F13,I4,L1	Reduce season of use at site. Improve signing at site. Replace existing constructed features (flush toilet buildings and drain fields) to reduce deferred maintenance.	FY09	FY12	\$4,000	Operate site from May 30 to Oct. 15. Work through REA board to increase Rec Fee at site. See - Investment priorities to reduce Deferred Maintenance.
62001	DIGIT POINT DAY USE AREA	C2,F13	Reduce season of use at site. Improve signing at site.	FY09	FY11	\$4,000	Operate site from May 30 to Oct. 15.
62001	JACKSON CREEK	C2,L1		FY08	FY10	\$0	Operate site from May 15 to Oct. 15. See - Investment priorities to reduce Deferred Maintenance.
62001	SCOTT CREEK	C2	Reduce season of use at site.	FY08	FY12	\$0	Operate site from May 30 to Oct. 15.
62002	HEAD OF THE RIVER CAMPGROUND	F9	Major recreation/upgrade of recreation site.	FY09	FY12	\$95,000	Operate site from May 1 to Oct. 30.
62002	OUX KANEE OVERLOOK	D3,D6,E6,L2	Remove toilet building. Remove picnic tables and all bulletin boards at site. Reduce frequency of services at site. Repair existing constructed feature (rock wall) to reduce deferred maintenance.	FY08	FY10	\$3,000	Operate site from May 1 to Oct. 30. See - Investment priorities to reduce Deferred Maintenance.
62002	SPRING CREEK CAMPGROUND	C2,L1	Reduce season of use at site. Replace existing constructed feature (water system and new toilet building) to reduce deferred maintenance.	FY08	FY12	\$0	Operate site from May 1 to Oct. 30. See - Investment priorities to reduce Deferred Maintenance.
62002	WILLIAMSON RIVER CAMPGROUND	I4,J1	Increase current Rec Fee at site. Increase capacity of site by 10 camp units.	FY09	FY11	\$0	Operate site from May 1 to Oct. 30. Work through REA board to increase Rec Fee at site.
62002	WOOD RIVER DAY-USE AREA	C1,F13	Increase season of use at site. Improve signing at site.	FY08	FY10	\$25,000	Operate site from May 1 to Oct. 30.
62003	ANNIE CREEK SNO-PARK	F7,L1	Add amenities (shelter, firerings and orientation station for Scenic Byway) to site. Replace existing constructed feature (new toilet building) to reduce deferred maintenance.	FY08	FY10	\$0	Operate site from Jan. 1 to Dec. 31. See - Investment priorities to reduce Deferred Maintenance. Site enhancement is funded with Scenic Byway \$\$\$'s (\$70,000).
62003	ASPEN POINT CG	F5,F16,L1	Add hot showers to site. Upgrate boat dock by adding one segment. Replace existing constructed feature (6 new toilet building and waste water systems) to reduce deferred maintenance.	FY09	FY12	\$0	Operate site from May 25 to Sept. 6. See - Investment priorities to reduce Deferred Maintenance. Work with Oregon Marine Board for funding (\$300,000). Cost include a one time improvements for hot showers to new toilet structures.

62003	COLDSPRINGS TRAILHEAD	C2	Reduce season of use at site.	FY08	FY12	\$0	Operate site from June 15 to Sept. 30.
62003	CRYSTAL SPRINGS PICNIC SITE	C1,F7,F13	Increase season of use at site. Add amenities (Scenic Byway signing). Improve signing at site.	FY09	FY12	\$35,000	Operate site from Jan. 1 to Dec. 31.
62003	FOURMILE LAKE CAMPGROUND	NC2	No change - currently concession operation.	FY08	FY12	\$0	Operate site from June 25 to Oct. 30.
62003	GREAT MEADOW SNO-PARK	F13	Improve signing at site.	FY08	FY11	\$6,000	Operate site from Jan. 1 to Dec. 31.
62003	MT MCLOUGHLIN TRAILHEAD	C2	Reduce season of use at site.	FY08	FY12	\$0	Operate site from June 25 to Sept. 30.
62003	ODESSA CAMPGROUND	NC1	No change - currently USFS operate.	FY08	FY12	\$0	Operate site from April 1 to Nov. 15.
62003	PELICAN FIRE LOOKOUT	C2,H7,J2	This site is not USFS ownership.			\$0	
62003	PELICAN RESIDENCE BUILDING	C1,F9,H3	Increase season of use at site. Major recreation/upgrade of recreation site. Operator site with volunteers.		FY10	\$0	Operate site from May 1 to Oct. 30. Upgrade of site is with State of Oregon funds (\$170,000).
62003	RAINBOW DAY USE AREA	C2,F9,L1	Reduce season of use at site. Major recreation/upgrade (boat launch and power line underground) of recreation site. Replace existing constructed feature (2 new toilet building and waste water systems) to reduce deferred maintenance.	FY09	FY12	\$0	Operate site from May 1 to Oct. 30. See - Investment priorities to reduce Deferred Maintenance. Work with Oregon Marine Board for funding.
62003	ROCKY POINT BOAT LAUNCH	C2,F9	Reduce season of use at site. Major recreation/upgrade (floats and parking lot) of recreation site.	FY08	FY12	\$55,000	Operate site from April 1 to Nov. 15. Work with Oregon Marine Board for funding.
62003	SEVENMILE MARSH TRAILHEAD	C1,J1,K1	Increase season of use at site. Increase capacity of site by 12 parking spaces. Change development scale of site from 2 to 3.	FY08	FY10	\$20,000	Operate site from June 15 to Oct. 30..
62003	SUMMIT SNO-PARK/PCT TRAILHEAD	NC1	No change - currently USFS operate.	FY08	FY12		Operate site from Jan. 1 to Dec. 31.
62003	SUNSET CAMPGROUND	F5,F16,L1	Add hot showers to site. Upgrade boat dock by adding one segment. Replace existing constructed feature (4 new toilet building and waste water systems) to reduce deferred maintenance.	FY09	FY12	\$0	Operate site from May 25 to Sept. 6. See - Investment priorities to reduce Deferred Maintenance. Work with Oregon Marine Board for funding. Cost include a one time improvements for hot showers to new toilet structures.

B. PROGRAMMATIC ACTIONS

FREMONT-WINEMA National Forest

8b. INFO ENTRY: 5-Year Proposed Program of Work - Programmatic Actions

ACTION	LEAD	TIME FRAME
<p>FLT will review the NFRW and CMFC distribution shown in worksheet 1a to ensure percentages are accurate. Understanding where concessionaire permit administration is covered is important.</p>	<p>Forest Rec Staff</p>	
<p>Develop a forest wide fee policy on fee pricing to ensure that like sites with like amenities have similar prices This includes horse camps. There may places that are anomalies which would be determined as part of this exercise.</p>	<p>Forest Rec Staff</p>	
<p>Develop forest guidelines for any new development. Develop a strategy for funding the recreation program as a whole - moving toward sustainability. Look at all program areas, funding sources current and future. Use the RFA results, the recreation Niche and the Forest Strategic Plan.</p>	<p>Forest Rec. Staff</p>	
<p>Develop a Communication Plan for sharing and gathering feedback to the PPOW. Tools to use: Use examples from RFA public participation wabsite. -- Develop one-pager with Niche/vision and key actions from PPOW. Set context for the proposal actions and timeframe. Include tie-in with proposed new projects. -- Put information on Forest web-page with process for public comment. -- Have one-on-one conversations with key partners, congressional reps, tribal leaders, concessionaires, and other groups/individuals who may have interest in specific proposed actions.</p>	<p>Forest Rec. Staff</p>	
<p>A programatic action will be to emphasize the use of campground hosts to improve customer service, improve fee compliance and improve campground management. Emphasis will be on campgrounds proposed for new fees, primarily on the Fremont side.</p>	<p>Forest Rec. Staff</p>	
<p>Fremont Point recreation cabin burned to the ground in the Toolbox Fire in 2002. This cabin was rented over 300 nights a year due to its popular location, expansive views from Winter Rim. We wish to add the following paragraph to the Programatic Action section of the PPOW. Move Applegate Butte Guard Station house to the former Fremont Point Lookout site and add the structure into the recreation cabin rental program. The Applegate Butte Guard Station is abandoned and in need of action, either removal or restoration. The Applegate Butte site will be cleaned up by removing the foundation and old toilet, smoothing out and revegetating the structure site. The Guard Station will be installed on a foundation at Fremont Point. A single unit vault toilet would also be installed at Fremont Point. Rental price for the relocated house will be established through market analysis. The new Fremont Point cabin will generate an estimated \$15,000 to \$18,000 a year in revenue. The cost of this project is estimated to be \$50,000.</p>	<p>Forest Rec. Staff</p>	

C. INVESTMENT PRIORITIES TO REDUCE DEFERRED MAINTENANCE

The following table lists sites with priority deferred maintenance needs that are currently unfunded. Cost estimates were developed in ___ as part of the Forest’s submittal package for Regional Capital Investment Program (CIP) consideration. Update cost estimates as other funding opportunities are pursued.

Listed projects received the highest niche compliance score (20 pts.). Once deferred maintenance needs are eliminated, the sites will rank in the top 20% of Forest sites.

FREMONT-WINEMA National Forest

8c. INFO ENTRY: 5-Year Proposed Program of Work - Investment Priorities to Reduce DM				
PROJECT NAME	SCOPE OF PROJECT	COST	CURRENT SCORE	POST PROJECT SCORE
CAN SPRINGS CAMPGROUND	Replace existing constructed feature (new toilet building) to reduce deferred maintenance.	\$ 20,000	60	
COTTONWOOD COMPLEX	Replace existing constructed feature (new toilet building) to reduce deferred maintenance.	\$ 40,000	19	
DOG LAKE	Repair existing constructed features (water system and fence) to reduce deferred maintenance.	\$ 60,000	23	
ROGGER TRAILHEAD	Replace existing constructed feature (new toilet building) to reduce deferred maintenance.	\$ 20,000	15	
SILVER CREEK MARSH	Repair existing constructed feature (water system) to reduce deferred maintenance.	\$ 8,000	1	
CORRAL SPRINGS CAMPGROUND	Replace existing constructed feature (new toilet building) to reduce deferred maintenance.	\$ 20,000	78	
DIGIT POINT CAMPGROUND	Replace existing constructed feature (3 new toilet building and waste water systems) to reduce deferred maintenance.	\$ 330,000	6	
JACKSON CREEK	Replace existing constructed feature (new toilet building) to reduce deferred maintenance.	\$ 20,000	59	
OUX KANEE OVERLOOK	Repair existing constructed feature (rock wall and railing) to reduce deferred maintenance.	\$ 10,000	84	

PROJECT NAME	SCOPE OF PROJECT	COST	CURRENT SCORE	POST PROJECT SCORE
SPRING CREEK CAMPGROUND	Replace existing constructed feature (water system and new toilet building) to reduce deferred maintenance.	\$ 38,500	47	
ANNIE CREEK SNO-PARK	Replace existing constructed feature (new toilet building) to reduce deferred maintenance.	\$ 20,000	10	
ASPEN POINT CG	Replace existing constructed feature (6 new toilet building and waste water systems) to reduce deferred maintenance.	\$ 690,000	4	
RAINBOW DAY USE AREA	Replace existing constructed feature (2 new toilet building and waste water systems) to reduce deferred maintenance.	\$ 230,000	2	
SUNSET CAMPGROUND	Replace existing constructed feature (4 new toilet building and waste water systems) to reduce deferred maintenance.	\$ 460,000	11	

D. DEFERRED MAINTENANCE REDUCTION ANALYSIS

Variable DM Reduction Rate					
DM Total	% Reduction	Reduction \$	Annual Expenditure Required for 4 or 5 Years to Meet Target	Target DM \$ by Target Date	Target Date
\$2,689,309	20%	\$537,862	\$107,600	\$2,151,447	2010
\$2,151,447	50%	\$1,344,655	\$268,900	\$806,793	2015
\$268,931	20%	\$537,862	\$107,600	\$268,931	2020

Straight Line DM 14 Year Reduction Rate					
DM Total	% Reduction	Reduction \$	Annual Expenditure Required to Meet 2020 Target	Target DM \$ by 2020	Target Date
\$2,689,309	90%	\$2,420,378	\$186,200	\$268,931	2020
DM Total After MOC Staff Work	Target DM \$ by 2020	Reduction \$ After MOC Staff Work	Annual Expenditure Required to Meet 2020 Target after MOC Staff Work		
\$723,166	\$268,931	\$454,235	\$34,900		
* Reduction from MOC staff work			\$1,966,144		
Yrs. Resulting from staff work			11		

Annual Funds Available for DM			
Annual Expenditure Required to Meet 2020 Target after MOC Staff Work	Annual Granger-Thye Fee Off-set	Annual Revenues Available for DM	Remaining Annual DM Reduction Shortfall
\$34,900	\$ 17,000	\$0	\$17,900

5. APPENDIX

A. RECREATION SITE DEVELOPMENT SCALE GUIDE

Scale #	Definition
0	<p>No site modification</p> <ul style="list-style-type: none"> ○ No constructed improvements evident at the site ○ Little to no controls or regimentation ○ Primary access usually over primitive roads ○ Spacing informal and often established by user
1	<p>Almost no site modification.</p> <ul style="list-style-type: none"> ○ Rustic or rudimentary improvements designed for protection of the site rather than comfort of the users. ○ Use of synthetic materials excluded. ○ Minimum controls are subtle. ○ No obvious regimentation. ○ Primary access usually over primitive roads ○ Spacing informal and extended to minimize contacts between users.
2	<p>Minimal site modification.</p> <ul style="list-style-type: none"> ○ Rustic or rudimentary improvements designed primarily for protection of the site rather than the comfort of the users. ○ Use of synthetic materials avoided. ○ Minimum controls are subtle. ○ Little obvious regimentation. ○ Spacing informal and extended to minimize contacts between users. ○ Primary access usually over primitive roads. ○ Interpretive services informal, almost subliminal.
3	<p>Moderate site modification.</p> <ul style="list-style-type: none"> ○ Facilities about equal for protection of natural site and comfort of users. ○ Contemporary/rustic design of improvements is usually based on use of native materials. Inconspicuous vehicular traffic controls usually provided. ○ Roads may be hard surfaced and trails formalized. ○ Development density about 3 family units per acre. ○ Primary access may be over high standard roads. ○ Interpretive services informal if offered, but generally direct.
4	<p>Heavy site modification.</p> <ul style="list-style-type: none"> ○ Some facilities designed strictly for comfort and convenience of users. ○ Luxury facilities not provided. ○ Facility design may incorporate synthetic materials. ○ Extensive use of artificial surfacing of roads and trails. ○ Vehicular traffic control usually obvious. ○ Primary access usually over paved roads. ○ Development density 3-5 family units per acre. ○ Plant materials usually native. ○ Interpretive services, if offered, often formal or structured.
5	<p>Extensive site modification.</p> <ul style="list-style-type: none"> ○ Facilities mostly designed for comfort and convenience of users and usually include flush toilets; may include showers, bathhouses, laundry facilities, and electrical hookups. ○ Synthetic materials commonly used.

- | | |
|--|---|
| | <ul style="list-style-type: none">○ Formal walks or surfaced trails.○ Regimentation of users is obvious.○ Access usually by high-speed highways.○ Development density 5 or more family units per acre.○ Plant materials may be non-native.○ Formal interpretive services usually available. Designs formalized and architecture may be contemporary.○ Mowed lawns and clipped shrubs not unusual. |
|--|---|

B. MANAGEMENT OPTION CODE LIST

A – DECOMMISSION [Capture decommissioning costs in 5-year Program of Work]

1. Decommission
 - a. As soon as practical
 - b. Begin glide path
2. Partial Decommission (e.g., remove campsites next to boat ramp)

B - CLOSURE

1. Close – defer decommissioning
2. Partial Closure – defer decommissioning (e.g., close campsites next to boat ramp but don't remove yet)
3. Closure pending completion of site improvements

C - CHANGE SEASON [If a change, reflect in columns J or K, in worksheet 3, the change in operating days]

1. Increase season
2. Reduce season
3. Intermittent closure during season
4. Open weekends/holidays only
5. Open for hunting season only

D – REMOVE OR ELIMINATE A COST SOURCE or SERVICE SEASON [use Site task cost detail in Worksheet 2b of the Ranking Template]

1. Reduce mowed area
2. Remove trashcans
3. Remove restroom facilities
4. Remove tables and/or grills
5. Other changes to site design or features to reduce costs
- 6.
7. Other changes to eliminate on-site services
8. Close or remove water system
9. Close or remove waste water system

E - REDUCE SERVICE FREQUENCY SEASON [use Site task cost detail in Worksheet 2b of the Ranking Template] *THESE CODES ARE RARELY USED AND REQUIRE SIGNIFICANT DOCUMENTATION*

1. Reduce service – mow less frequent
2. Reduce service – trash and clean-up less frequent
3. Reduce service – restroom cleaning less frequent
4. Reduce service – staff presence reduced on site
5. Reduce service – less frequent bulletin board posting
- 6.
7. Reduce service – other

F – INCREASE/IMPROVE SERVICES [use applicable rates in Features section of Recreation Sites module in Infra]

1. Add electrical hook-ups
2. Increase amps of existing electrical hook-ups
3. Add water hook-ups
4. Add sewer hook-ups
5. Add hot showers
6. Upgrade existing feature (e.g., replace SST with flush toilets)
7. Add amenities (playground, swim area, etc)
8. Add a Host site(s)
9. Major reconstruction/upgrade of the recreation area
10. Increase staff presence (including law enforcement)
- 11.
12. Improve visitor information and bulletin boards
13. Improve signing
14. Add water delivery service to individual users
15. Add greywater/blackwater pumping service to individual users
16. Other
17. Add a toilet building(s)

G – CONSTRUCT A NEW AREA

1. Construct a new site

H – CHANGE OPERATOR or WORKFORCE

1. Change to a concession operation [**apply a 60% savings to O&M cost per operating day**]
2. Operate through a partner agreement (e.g., local community, State agency, etc)
3. Volunteer (increase use of volunteers at the site)
4. Contractor (begin or expand use of contracting)
5. Prison labor (begin or expand use of prison labor)
6. Other

I – CHANGE FEES

1. Eliminate fee
2. Reduce fee
3. Begin charging a fee
4. Increase current fee
5. Increase fee compliance efforts

J – CHANGE CAPACITY (PAOT) [If a change, reflect in columns S or T, in worksheet 3, the change in capacity]

1. Increase Capacity (Add a loop, build additional sites, add parking, etc)

2. Reduce Capacity (i.e., close a loop, remove camp units, eliminate a parking area, etc.)

K -- SITE CONVERSION

1. Change in Development Scale
2. Change in Site Type
3. Study feasibility of converting site from FA&O facility to recreation site

L – REPLACEMENT/REPAIR

1. Replacement of an existing constructed feature that results in the reduction of Deferred Maintenance
2. Repair of an existing constructed feature that results in the reduction of Deferred Maintenance.
3. Conversion of constructed features to meet accessibility standards.

NC – NO CHANGE (i.e., none of the above site specific changes apply)

1. No change – currently USFS operated
2. No change – currently concession operation
3. No change – currently operated by a partner under some other type of formal agreement

Note – A site can have more than one code