

Chapter GM

LAND USE AND OWNERSHIP,
EASTERN ROCK SPRINGS UPLIFT, GREATER
GREEN RIVER BASIN

By T.T. Tabor and S.A. Kinney

In U.S. Geological Survey Professional Paper 1625-A.

Contents

Explanation of Cultural Information.....	GM-1
Map Information for the Greater Green River Basin Land Use And Land Cover Map.....	GM-2
Map Information for the Greater Green River Basin Subsurface Ownership map.....	GM-3
Map Information for the Greater Green River Basin Surface Ownership.....	GM-4

Figures

GM-1. Land Use and Land Cover; Greater Green River Basin

GM-2. Subsurface Ownership; Greater Green River Basin

GM-3 Surface Ownership; Greater Green River Basin

EXPLANATION OF CULTURAL INFORMATION

Roads—These are selected roads from USGS 1:2,000,000-scale digital line graphs (DLG). These contain two types of roads.

Interstate—These are major roads that are part of the national interstate system.

Highway—These include State and other highways.

Railroads—These are railroads from USGS 1:2,000,000-scale digital line graphs (DLG).

City/Towns—These features represent general locations of cities and towns in the basin.

Latitude/Longitude Tic Marks—These tics show locations of key parallels and meridians that pass through the basin.

MAP INFORMATION FOR THE GREATER GREEN RIVER BASIN LAND USE AND LAND COVER MAP

Sources—U.S. Geological Survey (USGS), Land Use and Land Cover Geographical Information Retrieval and Analysis System (GIRAS) files. 1:250,000 scale. The original maps were compiled from data collected between 1972 and 1979. Land Use and Land Cover Digital Data from 1:250,000 and 1:100,000 Scale Maps, Data Users Guide. 1990. Reston, Virginia. A complete description of these files can be obtained from the USGS at <http://edcwww.cr.usgs.gov/doc/edchome/ndcdb/ndcdb.html>

Description—The land use and land cover maps were simplified from their original format for increased readability. The narrowly defined categories were grouped into the following categories:
See figure **GM-1**.

Agriculture—This category includes cropland, pastures, hay fields, and other agriculture.

Barren Land—This category includes sandy areas, bare rock, and/or bare ground.

Forest—This category includes deciduous and/or evergreen forest land.

Rangeland—This category includes shrub, brush, and/or herbaceous rangeland.

Urban/Industrial—This category includes residential, commercial, and/or industrial land uses.

Water—This category includes rivers, streams, and lakes.

MAP INFORMATION FOR THE GREATER GREEN RIVER BASIN SUBSURFACE OWNERSHIP MAP

Source—The digital data for this graphic were compiled by the Montana BLM office and the USGS Energy Team from 1:24,000-scale BLM ownership maps.

Description—This map gives an overview of subsurface areas managed by Federal agencies within the Green River Basin.

See figure [GM-2](#).

Federal All Minerals—The federal government owns the rights to all minerals. This includes coal, oil, gas, and other mineral rights.

Federal Coal—The federal government owns the rights to coal minerals only.

Federal Oil and Gas—The federal government owns oil and gas minerals. This classification may include other mineral rights also.

Federal Oil, Gas and Coal—The federal government owns the rights to oil, gas, and coal resources.

Federal Other Minerals—The government owns mineral rights not listed.

No Federal Minerals—The federal government did not own subsurface mineral rights at the time the data were compiled.

Mine Lease Boundaries—These outlines represent the permit boundaries for two active mines in the Green River Basin.

MAP INFORMATION FOR THE GREATER GREEN RIVER BASIN SURFACE OWNERSHIP MAP

Source—The digital data for this graphic were compiled by the U.S. Bureau of Land Management (BLM) and the USGS from 1:24,000-scale BLM ownership maps.

Description—This map gives an overview of surface areas managed by Federal agencies within the Greater Green River Basin. See figure [GM-3](#).

U.S. Bureau of Land Management—These are comprised of lands administered by the BLM.

U.S. Bureau of Reclamation (BOR)—These are comprised of lands administered by the BOR.

U.S. Forest Service (USFS)—These are comprised of lands administered by the USFS.

U.S. Fish and Wildlife Service (USFWS)—These are comprised of lands administered by the USFWS.

State—These are composed of lands administered by the state.

Private—This category is composed of all other ownership types.

Water—Water bodies are identified, but ownership is not designated.

Mine Lease Boundaries—These outlines represent the permit boundaries for two active mines in the Green River Basin.

Figure GM-1. LAND USE/LAND COVER
GREATER GREEN RIVER BASIN

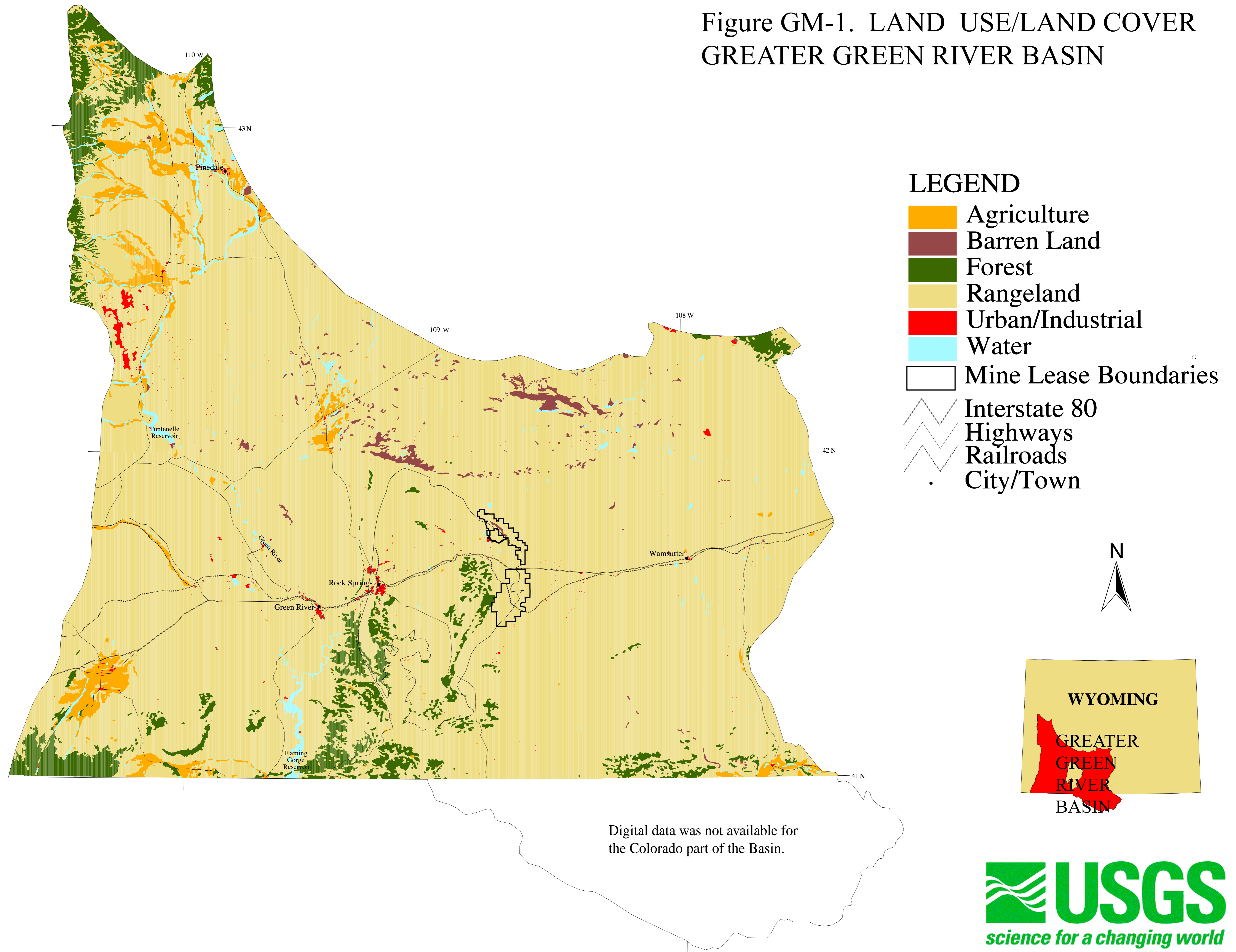
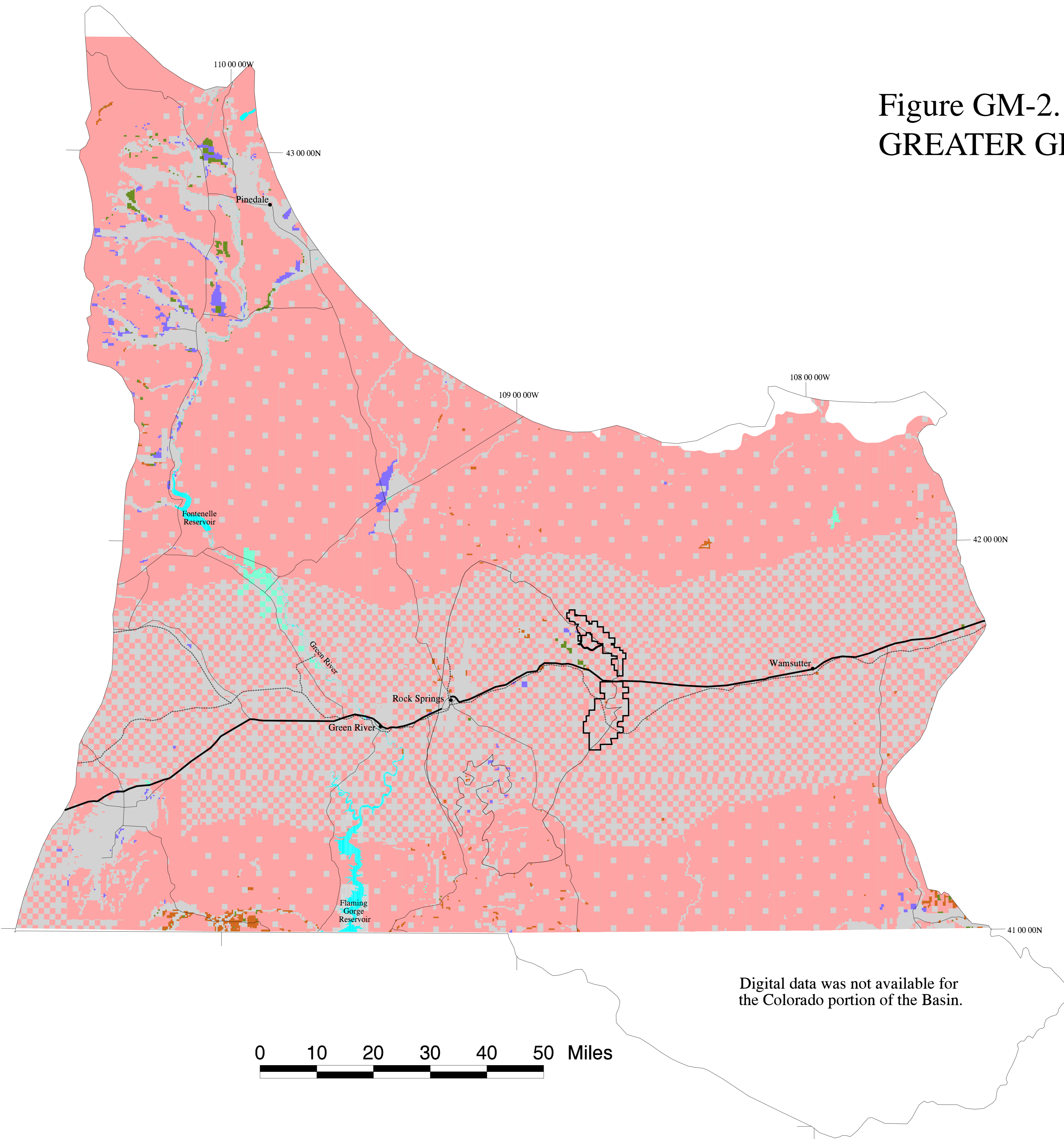


Figure GM-2. SUBSURFACE OWNERSHIP
GREATER GREEN RIVER BASIN



LEGEND

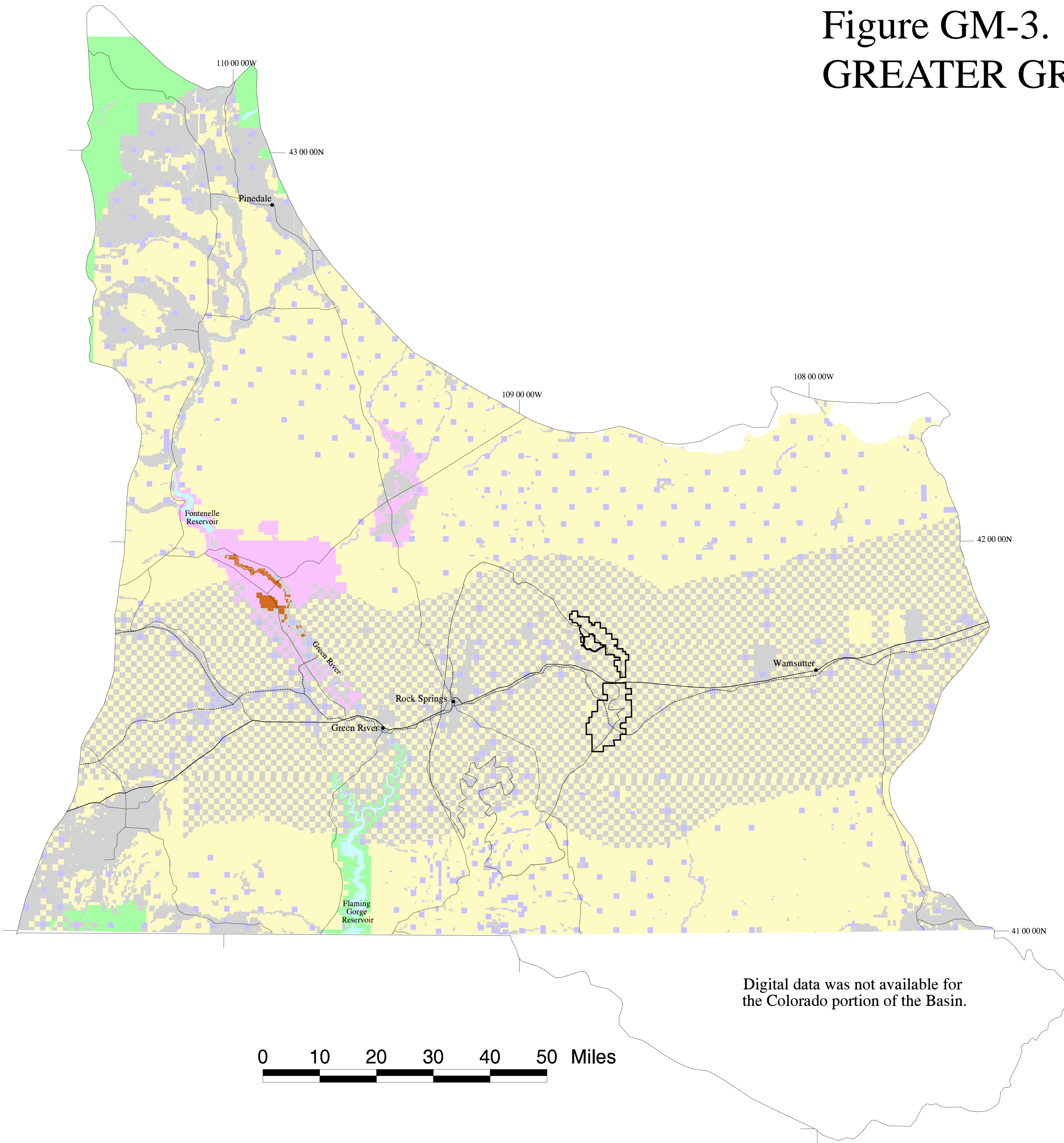
- Federal All Minerals
- Federal Coal
- Federal Oil & Gas
- Federal Oil, Gas & Coal
- Federal Other Minerals
- No Federal Minerals
- Water
- Mine Lease Boundaries
- Interstate 80
- Highways
- Railroads
- Grb_towns.shp



Digital data was not available for the Colorado portion of the Basin.

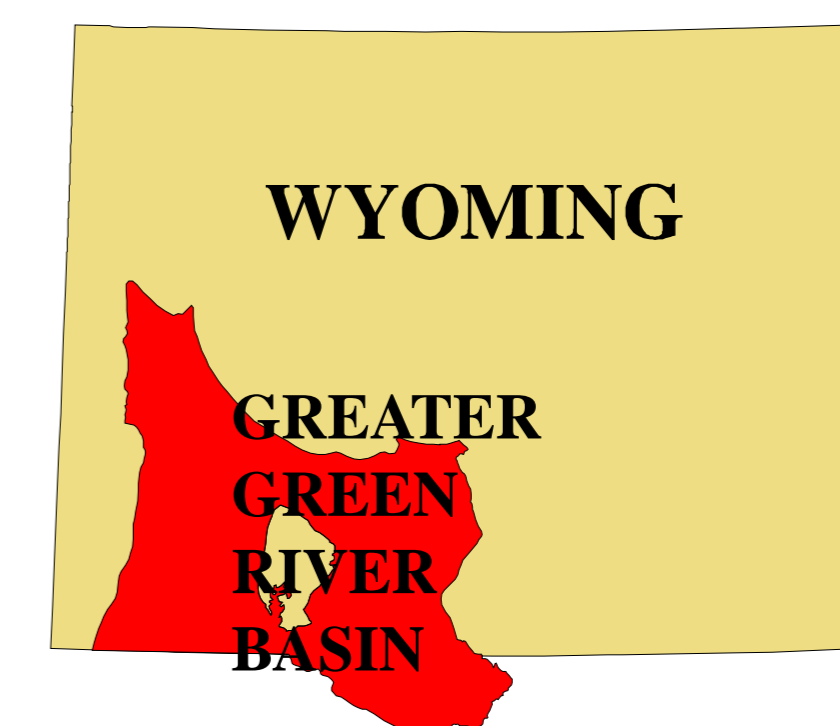


Figure GM-3. SURFACE OWNERSHIP GREATER GREEN RIVER BASIN



LEGEND

- Bureau of Land Management
- Bureau of Reclamation
- U S Forest Service
- U S Fish and Wildlife Service
- Private
- State
- Water
- Mine Lease Boundaries
- Interstates
- Highways
- Railroads
- City/Town



Digital data was not available for the Colorado portion of the Basin.

