

INTRODUCTION

Parks are landscapes and shrines in which we feel wonder and reverence, where we invite each other to consider what it is about America in which we take the greatest pride.... **Roger Kennedy, 12th NPS Director**

The National Park Service (NPS) was created by Congress on August 25, 1916 to “conserve ... unimpaired” natural and cultural resources for the education, “use and enjoyment” of current and future generations of Americans. The National Park System includes 391 areas covering 84 million acres of public lands in 49 states, the District of Columbia, and 7 US Territories that are nationally significant and outstanding representatives of the best of America’s heritage, character, and future. They warrant the highest recognition and protection afforded under federal conservation law. The National Park Service actively cooperates with partners to help achieve this mission and to maximize the conservation and recreational benefits of each park unit.

Catoctin Mountain Park originated as the 10,000 acre Catoctin Mountain Recreation Demonstration Area (RDA) in 1933. After a series of transfers in the Executive Branch, jurisdiction for the area came to the National Park Service, U.S. Department of the Interior in 1936. Park development began on January 2, 1936 with the arrival of the Works Progress Administration. The original project intent was to provide recreational facility development and return the area to the State of Maryland. However, on December 4, 1945 President Harry S Truman determined that “because of historical events of national and international interest” associated with Catoctin RDA and the Presidential Retreat, the property would remain under the administration of the National Park Service. In keeping with part of the original agreement the southern half of the park (4,470 acres) was deeded to the state of Maryland on June 2, 1954 and became Cunningham Falls State Park. The northern portion was renamed Catoctin Mountain Park.

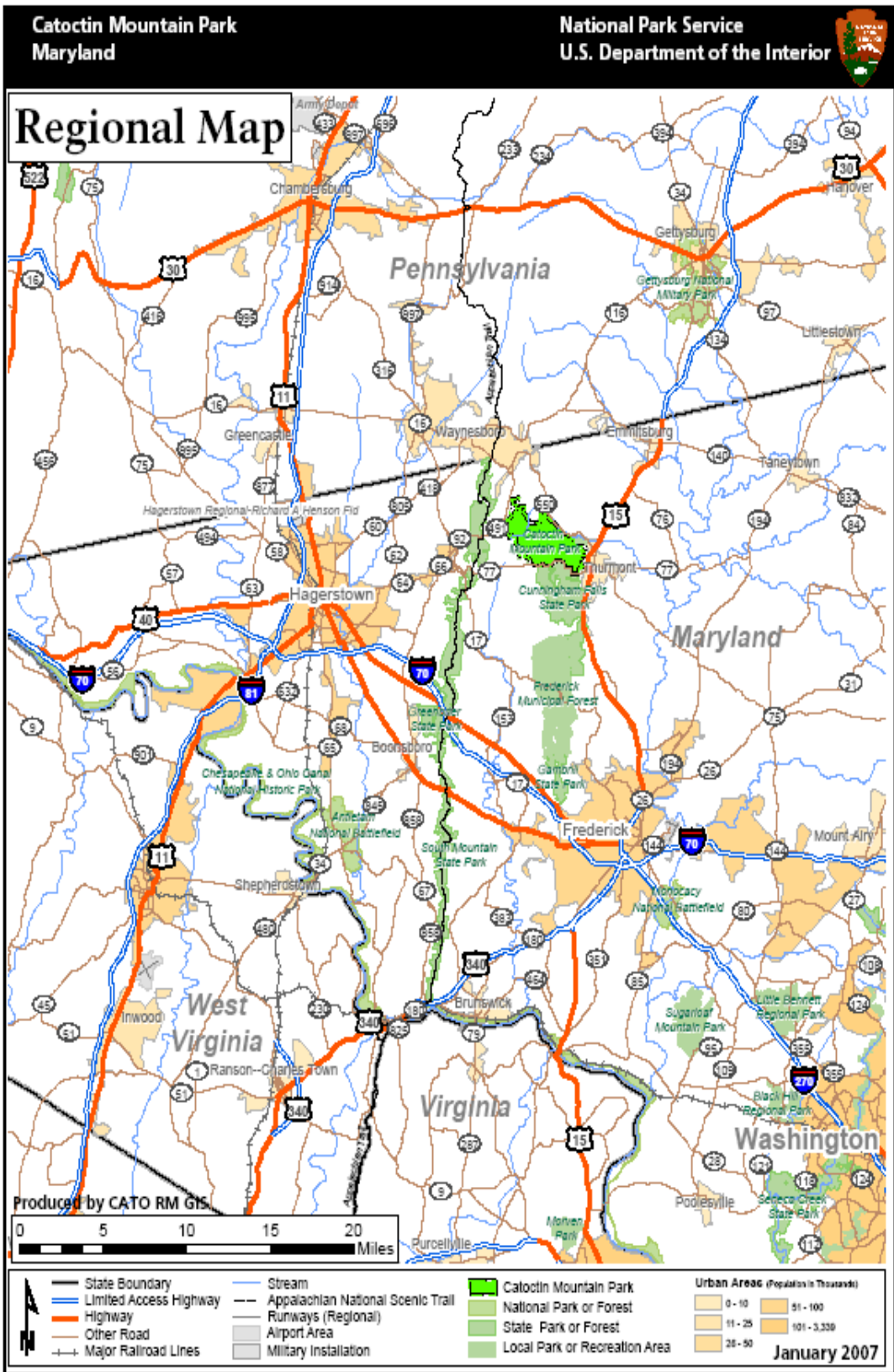
Every unit of the National Park Service requires a formal statement of its core mission to provide basic guidance for decisions to be made about the park. Increasing emphasis on government accountability and restrained federal spending make it imperative that park staff and stakeholders have a shared understanding of each park’s priorities and objectives and are focused on protecting highly significant park resources and values.

This Foundation Document will provide general guidance for Catoctin Mountain Park. The primary advantage of the Foundation Document is the opportunity to integrate all previous planning and decision-making into a single shared understanding of what is most important about the park. Any management decisions about priorities or balances between potentially overlapping laws and policies or competing resources and values require National Environmental Policy Act analysis that is beyond the scope of this document.

The document provides four basic items:

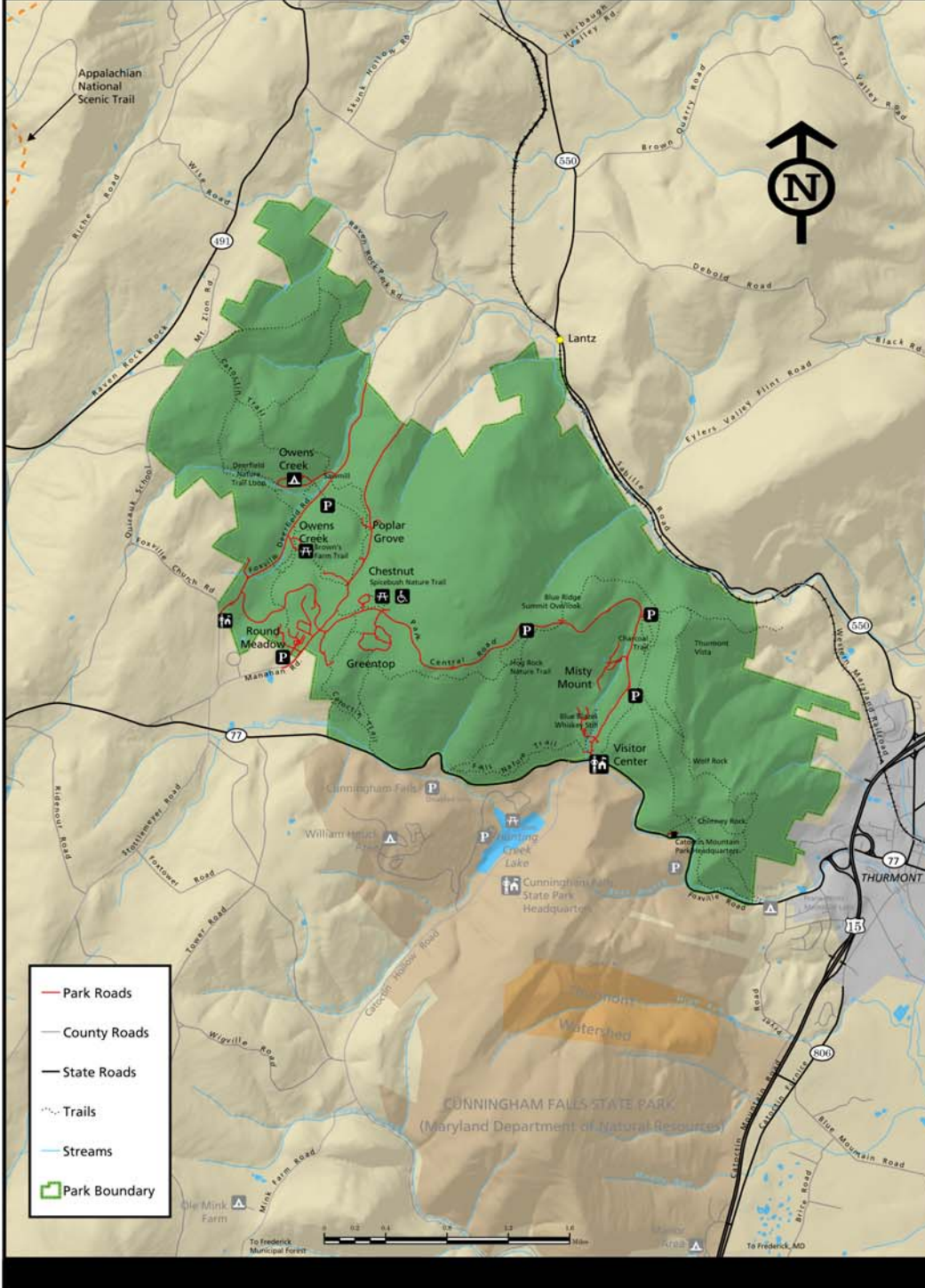
- Current and future direction for management
- Focus on what is most important
- Elaboration on what constitutes desired future conditions
- Continuity of efforts between current and future managers

The estimated planning horizon for Foundation Documents is 15-20 years. Since many changes will occur over this time frame, the Foundation Document will be updated as necessary. If major changes can be anticipated, this plan will be updated as they occur with more detailed plans, additional public involvement, and appropriate environmental compliance measures. As stated in the NPS Management Policies: “the Service is committed to providing appropriate high quality opportunities for visitors to enjoy the parks, and will maintain within the parks an atmosphere that is open, inviting and accessible to every segment of American society.” The public has right to know about the challenges facing the NPS and to participate in the process by which we find solutions. Citizens who participate by raising issues and voicing concerns help the NPS expand our range of options and assess the impacts of our decisions. Your comments on the proposals found in this plan are welcome.

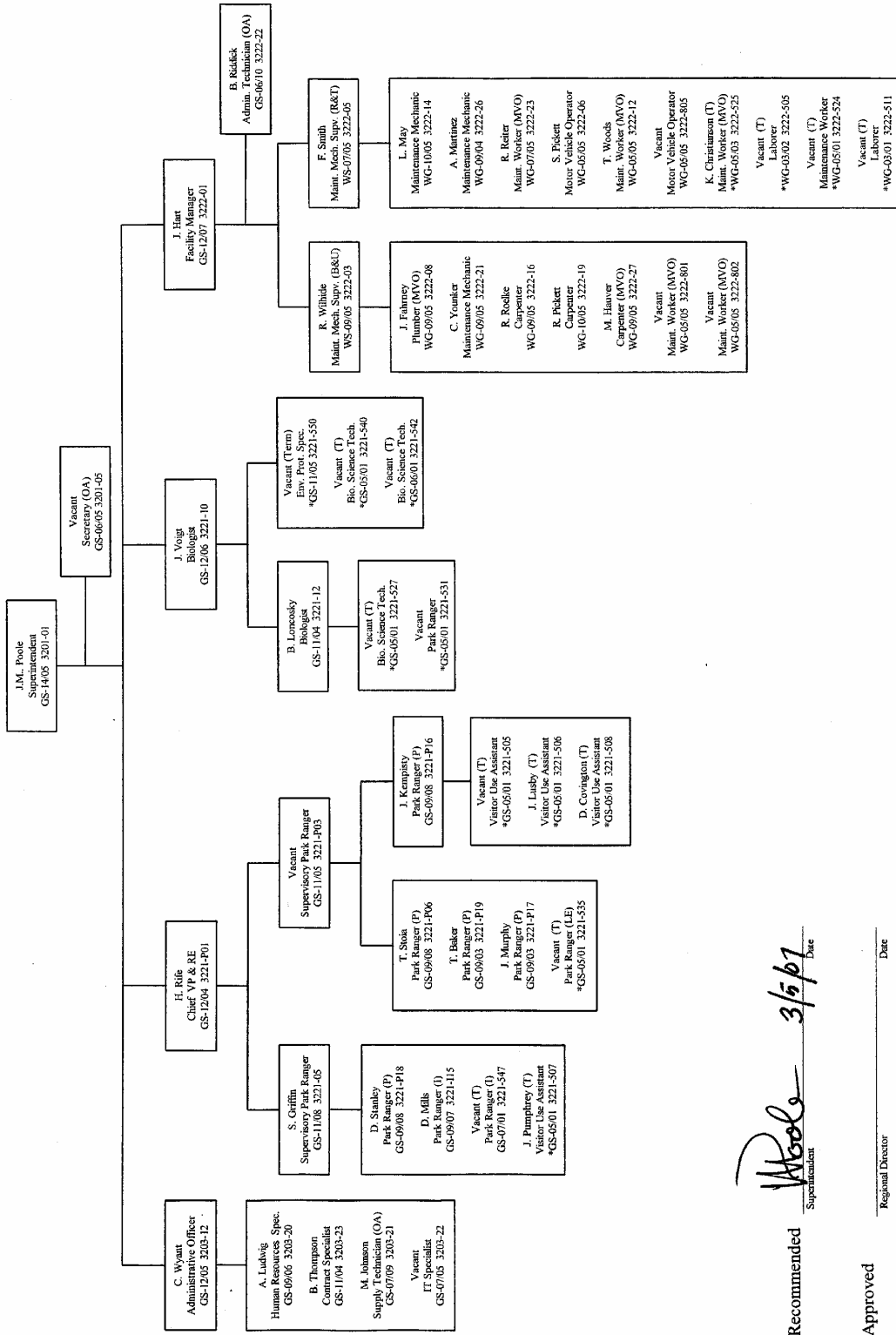


Catoctin Mountain Park

National Park Service
U.S. Department of the Interior



Catoctin Mountain Park - FY2007 Organization Chart



Recommended *[Signature]* 3/5/07 Date

Approved _____ Date

* Funded (totally or partially) by Living History account or other funding sources

rev. 1/22/2007