

Environmental Information Symposium

2007

Getting it Right: Access to Environmental Information



Opening Remarks

Molly O'Neill

EPA Chief Information Office and Assistant
Administrator, Office of Environmental Information, EPA

November 14, 2007

For Conference Purposes Only



The Flow Of The River

EPA Deputy Administrator Marcus Peacock

November 08, 2007

Why "The Flow of the River"?

Many people ask me why this blog is called "The Flow of the River." There are three reasons:



ABOUT

COMMENT POLICY

Comments submitted after hours or on weekends will be posted as early as possible the next business day.

FREQUENT QUESTIONS

RECENT POSTS

[Why "The Flow of the River"?](#)

[The NAAQS](#)

[Law in Order](#)

[Roy Popkin](#)

[EPA's Haunted House](#)

[Guest Blog: Alex Beehler](#)

[Anything I Can Do, I Can Do Better](#)

[Performance on Capitol Hill](#)

[Guest Blog: Oceans and Rivers . . . and](#)

[Tommy's](#)

ARCHIVES

http://www.addthis.com - AddThis Social Bookmarking - Microsoft Internet Explorer

Why "The Flow of the River"?

Select a Bookmarking Service:

Favorites	Google Bookmarks
Del.icio.us	Digg
Facebook	Furl
StumbleUpon	Yahoo MyWeb
Newsvine	Reddit
Technorati	Live Bookmarks
Yahoo Bookmarks	Twitter
Ask	myAOL
Slashdot	Fark
Simpy	Propeller
RawSugar	Blogmarks
Spurl	LinkaGoGo
Mister Wong	Wink
Backflip	Magnolia
Diigo	Blue Dot
Segnalo	Netvouz
Tailrank	BlinkList
DropJack	Feed Me Links

The content of the picture reflects the content of

[Permalink](#) | [Receive Posts by Email](#) | [RSS](#) | [Comments \(0\)](#) | [TrackBack \(0\)](#)



Welcome to Watershed Central John Smith

Welcome

Info Resources

Data Resources

Wiki/Living Documents

Analysis

Collaboration

Workspace

search

go

Welcome

WELCOME TO WATERSHED CENTRAL

To begin using this site, click on one of the links below, or you may use the navigation tabs at the top of the screen.



Information Resources

Provides a listing of pertinent watershed informational resources, such as the Watershed Handbook, Publications, Outreach, Partnership, Funding, and Educational Resources.



Analysis

Allows the user to perform a robust analysis on several key data parameters. Provides mapping, model/tool comparison, and statistical results.



Data Resources

Provides a listing of GIS data layers, demographic data, and data web services.



Workspace

Provides resources for managing aspects of the project. Includes a project members, a project calendar, discussion boards, and project tools.



Wiki/Living Documents

A centralized working-document repository providing the ability to review, edit, and update existing documents.



Collaboration

Provides collaborative areas for team projects. Workspace supports the following services: content libraries, web calendar meetings, tasks, announcements, discussions, and messages inbox.



What is Watershed Central?

Watershed Central will be designed to provide watershed managers and decision-makers with a "centralized" location for information and data resources, living documents, analysis tools, and collaborative workspace for projects.

Records ▾ New Memo Reply Reply To All Forward Delete Follow Up Folder Copy Into New Chat Tools Report SPAM

 **BNA Highlights** <bhighlig@BNA.COM>
Sent by: bhighlig@BNA.COM
11/08/2007 02:50 AM
Please respond to bhighlig@BNA.COM

To: EPADELNL@mercury.bna.com
cc:
bcc:
Subject: Nov. 8 – BNA, Inc. Daily Environment Report

The BNA Daily Environment Report is brought to you by EPA Libraries. Please note, these materials may be copyrighted and should not be reproduced without permission. For more information, please contact Sam Bolik at (202)566-0577 or send an e-mail to bolik.sam@epa.gov.

BNA, Inc.

Daily Environment

REPORT

Number 216
Thursday, November 8, 2007
ISSN 1521-9402

[Printable Issue \(PDF Font\)](#)

[Jump to Table of Contents](#)

HIGHLIGHTS

RGGI Hopes to Hold First

The 10 states participating in the RGGI staff working group.

Republican Senators Want

Republican members of the Senate this month. Republican aides say the bill to be reviewed by EPA and

Colorado Governor Introduces

Colorado Gov. Ritter unveils a program to sequester and reduce

Kerry Introduces Legislation

Records ▾ New Memo Reply Reply To All Forward Delete Follow Up Folder Copy Into New Chat Tools Report SPAM

 **E&E Publishing, LLC** <ealerts@eenews.net>
11/08/2007 08:13 AM

ENVIRONMENT & ENERGY DAILY
THE BEST WAY TO TRACK CONGRESS

An E&E Publishing Service

 **EPA Libraries**
Find it here.

E&E Daily, Greenwire, and E&ENews PM are provided by the EPA Libraries to share the latest in news and information with Agency staff. Feel free to forward this e-mail to any EPA colleague who can benefit from this service.

Energy Bill Comparison Chart
The House and Senate this year have passed starkly different comprehensive energy bills, and a conference is possible this fall to reconcile the differences. With an eye on that conference, E&E Daily has compiled a side-by-side comparison chart of the bills. [Click here to view the chart.](#)

E&E Daily -- Thu., November 8, 2007 -- [Read the full edition](#)

- CLIMATE: Full committee markup date for Lieberman-Warner in flux**
The chairwoman of the Senate Environment and Public Works Committee wants to mark up a major global warming bill a week from today. But Sen. Barbara Boxer's (D-Calif.) schedule may end up slipping until after the Thanksgiving recess because of Republican opposition and the difficult pile of issues associated with winning enough votes.
- ON THE HILL**
- AGRICULTURE:** Farm bill votes delayed until next week
- FORESTS:** House panel sends illegal timber prevention bill to floor
- ANWR:** Lieberman renews bid for permanent drilling ban
- CAMPAIGN 2008:** Enviro, Dem leaders on different sides of Wynn

Records ▾ New Memo Reply Reply To All Forward Delete Follow Up Folder Copy Into New Chat Tools Report SPAM

 **"InsideEPA.com"** <epa-alerts@iwnews.com>
11/08/2007 05:18 AM
Please respond to epa-alerts@iwnews.com

To: Molly.ONeill@EPA.U.S.GOV
cc:
bcc:
Subject: Latest News From InsideEPA.com

This message has been provided by the EPA Headquarters Library to share the latest in news and information with Agency staff. Please do not reply to this message. If you no longer wish to receive these messages, please contact Kathleen Dougherty at 202-566-0579 or send an e-mail to k.dougherty@epa.gov.

InsideEPA.com
An online news service from the publishers of Inside EPA

Latest News - Thursday, November 08, 2007

- **Senate Farm Bill Seeks CAFO Study As Alternative To Superfund Waiver**
Senate agriculture committee leaders have granted a small concession to a bipartisan group of lawmakers seeking to exempt farming operations from animal manure as a feedstock in bioenergy production.
- **As Democrats Step Up Probes, EPA Enforcement Chief Defends Record**
EPA's top enforcement official is stepping up his defense of recent settlements and the longer-term track record of the agency's Office of Enforcement and Compliance Assurance.
- **Western Groups Seek EPA Technology Standard For Mines' Mercury Emissions**
Western environmental groups may soon sue EPA to force the agency to issue strict maximum achievable control technology (MACT) emissions power plant mercury from MACT regulation and finalized instead a controversial cap-and-trade rule.
- **GOP Seeks To Limit Democrats' Bill Requiring EPA Perchlorate Cleanup Level**
House Republicans are hoping to scale back long-sought Democratic legislation requiring EPA to set by a date certain an enforceable cleanup level for perchlorate.
- **Industry Asks Rationale For EPA PFOA Risk Research, Citing Phase-Out**
Industry officials are questioning why EPA is spending limited research dollars to conduct toxicity and exposure research on the controversial and completely phase out the chemical's use by 2015.



EPA Geospatial Data Download Service

[Recent Additions](#) | [Contact Us](#) | [Print Version](#) EF Search:

[EPA Home](#) > [Envirofacts](#) > EPA Geospatial Data Download Service



EPA Geospatial Data Access Project

Report an Error

To improve public health and the environment, the EPA collects information about facilities or sites subject to environmental regulation. The EPA Geospatial Data Access Project provides a downloadable extensible markup language (XML) file, Shapefile and Feature Class of these facilities or sites. Within the file is key facility information, along with associated environmental interests for use in mapping and reporting applications. If you find erroneous data with the download file(s), please click on the "Report an Error" button to notify the EPA of data errors.

Geospatial Data Download

To download the latest Geospatial Data file(s), please click on the appropriate button below.

File Size: 5.80MB, Posted: 07/17/2007

File Size: 7.80MB, Posted: 07/24/2007

File Size: 15.9MB, Posted: 07/24/2007

[View Geospatial Data History](#)

Notification Service

Would you like notification of geospatial data updates by email?

Email:

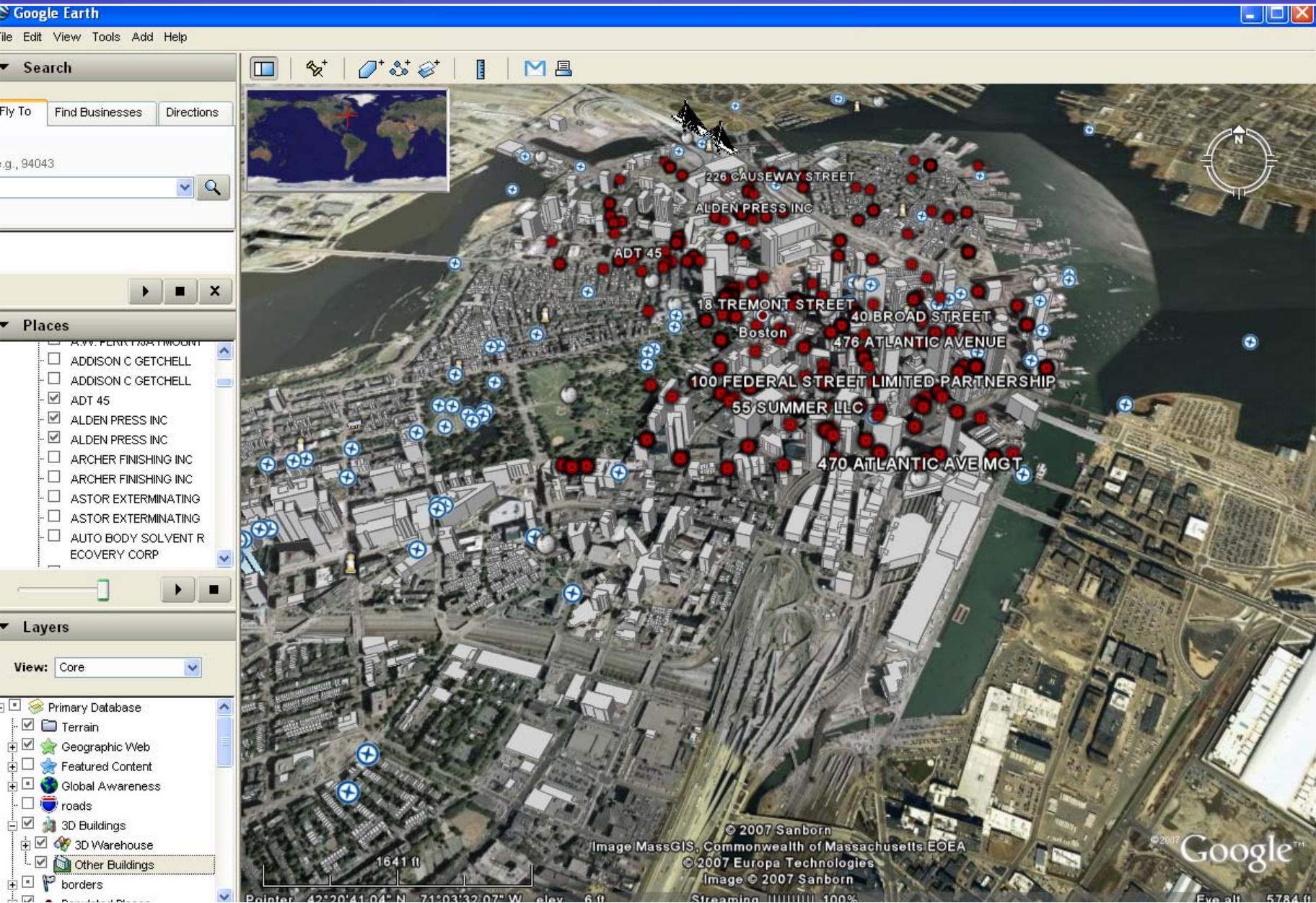
Featured Environmental Interests

EPA Geospatial Data Download file(s) includes:

- Superfund [National Priorities List \(NPL\)](#)
- RCRAInfo - [Treatment, Storage, Disposal](#) facilities
- [Toxic Release Inventory System](#) - All reported years **NEW**
- NEPT - [National Environmental Performance Track](#)
- Permit Compliance System (PCS) - [National Pollutant Discharge Elimination System \(NPDES\) Majors](#)

- EF Overview
- Queries, Maps, & Reports
- Data Update
- Contact Us
- Customer Satisfaction
- Resources
 - Fact Sheet
 - Documentation
 - Schema
 - Public Meeting
 - * Presentation
 - * Minutes
 - * Q&As

Disclaimer



For Conference Purposes Only



Region 6

Serving Louisiana, Arkansas, Oklahoma, New Mexico, Texas and 65 Tribes

Regional Administrator

Air

Water

Land

Compliance

Collaboration

Innovation

Homeland Security

U.S./Mexico Border

Newsroom

EPA En Español

Programs

What do these categories mean?

For KIDS

Search bar with 'Go' button

You are here: [EPA Home](#) » Region 6

Quick Finder

- | | | | | |
|-----------------|--------------|-------------|----------------|---------------|
| Acid Rain | Air | Asbestos | Careers | Clean Air Act |
| Clean Water Act | Cleanup | Enforcement | Global Warming | Grants |
| Hazardous Waste | Human Health | Lead | Mercury | Mold |
| Oil Spills | Ozone | Pesticides | Radon | Recycling |
| Regions | Radiation | Research | Superfund | Technology |
| Test Methods | TRI | Wastes | Water | Wetlands |
| More... | | | | |

Tools Options Find Map Aerial Hybrid

Virtual Earth

idvsolutions

Top Stories

EPA Flood Response

EPA is working closely with its state partners and local agencies to respond to the flood and oil spill emergencies in Oklahoma and Kansas. Local authorities can provide guidelines and assistance for residents preparing to return to homes or businesses. For additional information on the flood response and safety information, go to the following:

[EPA Announces Agreement to Address Coffeyville Oil Spill](#)

PandemicFlu.gov



Region 6 Administrator

Richard Greene's

- [Web Page](#)
- [Biography](#)
- [Speeches and](#)



HOW TO PARTICIPATE

- VISIT MASHUP CAMP
- EMAIL CONTRIBUTIONS TO contribute@epageo.org
- Use the WIKI at <http://pugetsound.epageo.org>
- Fillout form at <http://pugetsound.epageo.org>
- Call 314-485-4641

Watch for UPDATES on Progress During the Meeting!



Mash Up Camp

Drop in and learn about new technologies for bringing together multiple data sets and websites into powerful, integrated applications. Get up to speed on how you can participate in the *Puget Sound Information Challenge* (<http://pugetsound.epageo.org>)!

Schedule

Every hour on the hour:

Hands on demonstrations in advanced mash-up tools available from ESRI, Google, Yahoo!, and the Open Source community.

Every hour on the half hour:

Hands on demonstration of the *Puget Sound Information Challenge* wiki and associated tools.

Join the *Puget Sound Information Challenge* by:

- Visiting the Mash Up Camp.
- Emailing your contributions to contribute@epageo.org.
- Filling out the contribution form on the wiki at <http://pugetsound.epageo.org>.
- Posting a wiki entry at <http://pugetsound.epageo.org>.
- Calling 314-485-4641 to provide your input.

