



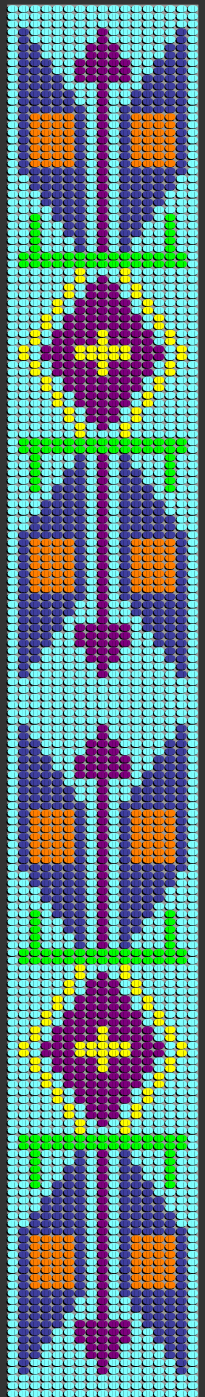
RESPECTING TRIBAL DATA

Ella Mulford

**Office of Solid Waste and Emergency Response
U.S. Environmental Protection Agency**

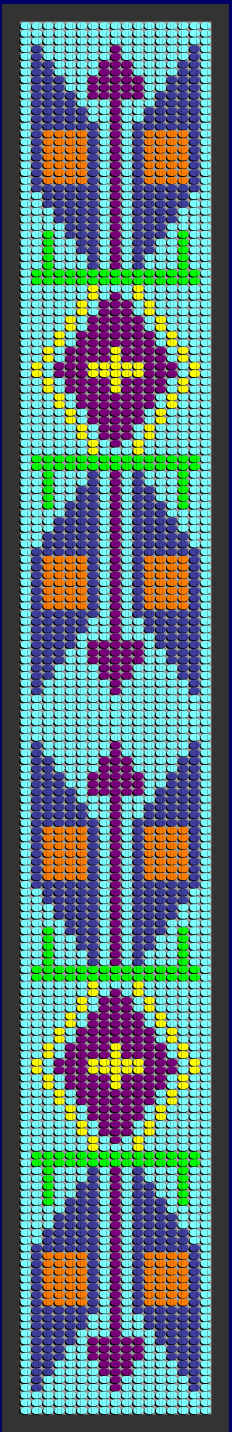
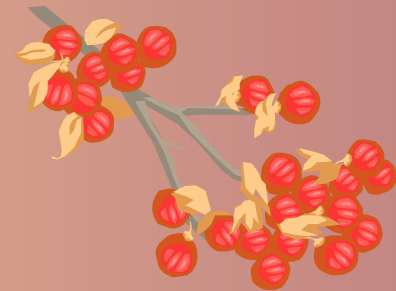
EXAMPLES OF TRIBAL DATA

- Environmental Monitoring
 - Air Quality
 - Water Quality
- Environmental Assessment
- Land Size
- Performance Tracking
- Compliance Information
- Population
- Cultural Practices



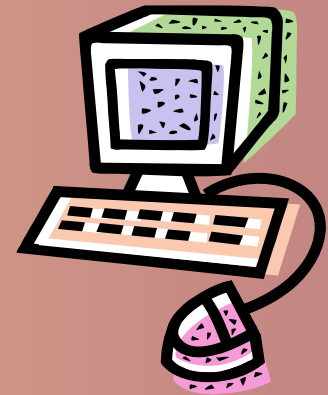
What Data May Be Sensitive

- Location/Type of Sacred Sites
- Natural Resources
- Traditional Use Areas
- Cultural Practices
- Law Suit Related



Protecting Tribal Data Issues

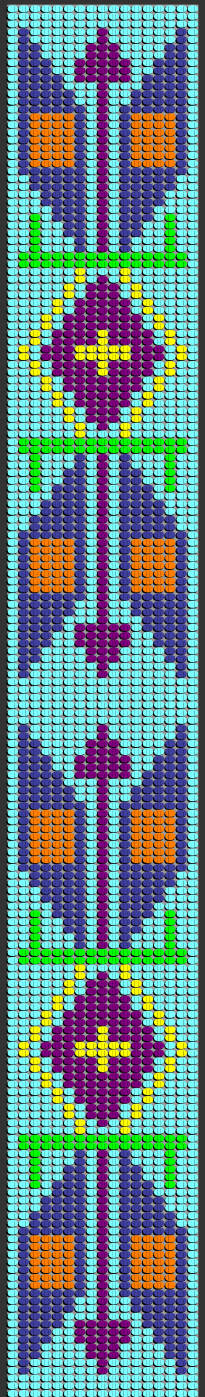
- “If we pay for it, it’s ours”
- “Treatment Similar to a State” or TAS Process
- Grants Terms and Conditions
- Use of Data



Balancing Environmental Protection & Safeguarding Data

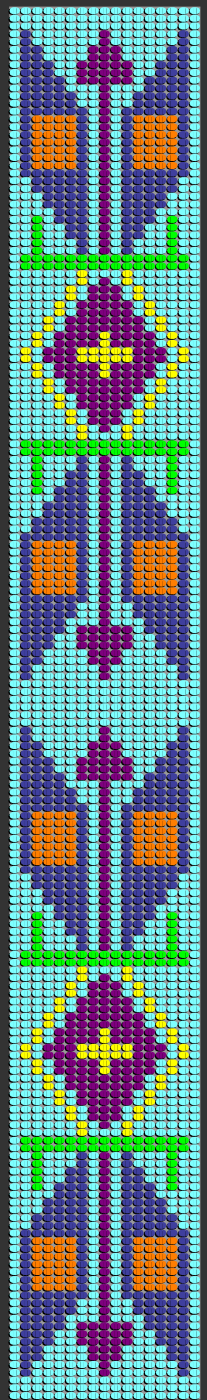


- Tribal Sovereignty
- Federal Trust Responsibility
- How much data is applicable/appropriate?
- Realities of choosing not to give data or grants



Ensuring Tribal Access to Best Available Data

- Understanding the “Universe”
 - Each Tribe is Unique
 - Baseline Information
 - Performance Measures



Collaborative Approach on Data

- EPA Indian Policy
- Communication
- Increase Capacity for Understanding
 - What's Fair
 - What's Right
- Best Practices
- Become
 - Accurate
 - Credible
 - Trusted

