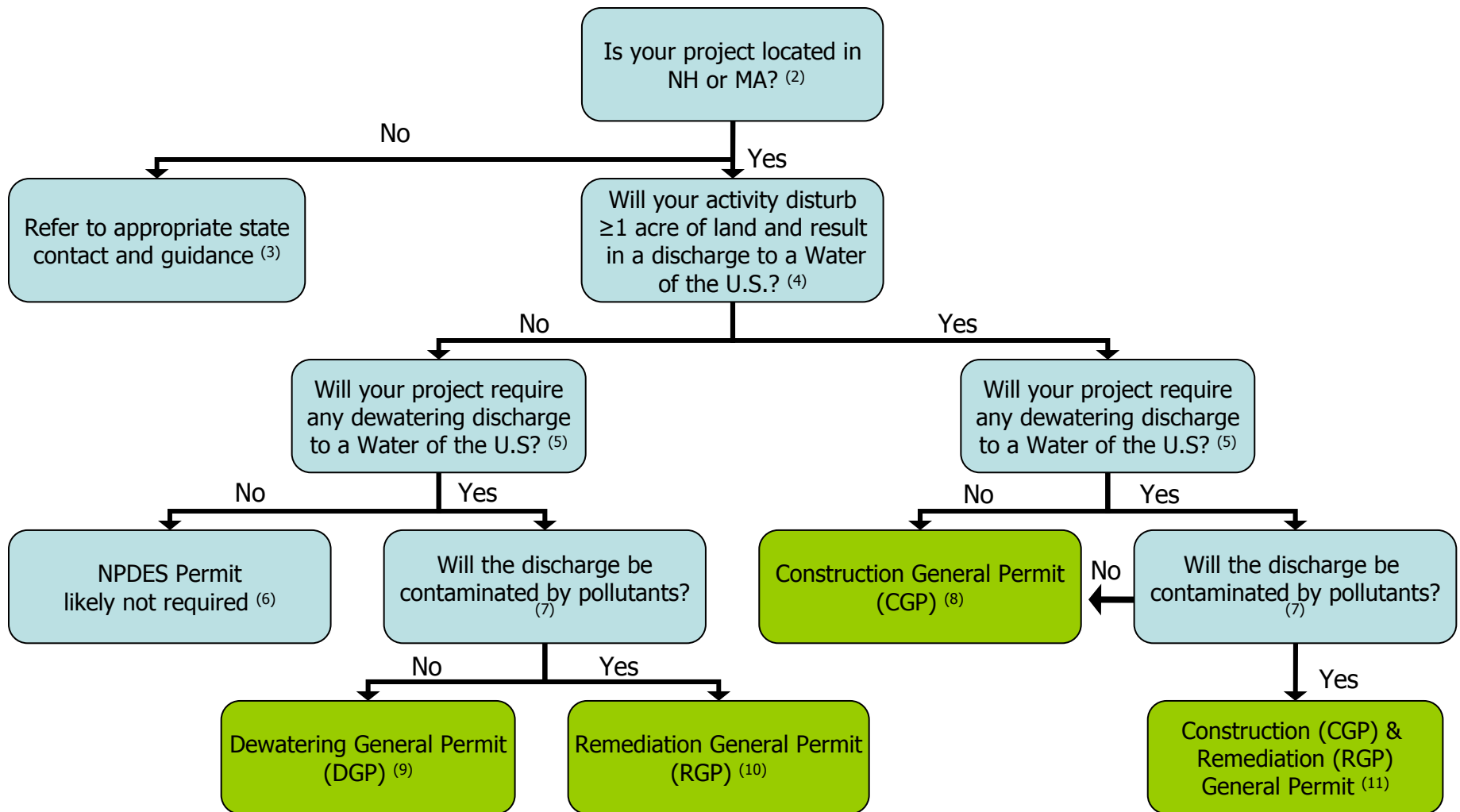


Do I need NPDES Permit Coverage for Discharges Related to my Construction Activity and Which General Permits are Available?⁽¹⁾



Do I need NPDES Permit Coverage for Discharges Related to my Construction Activity and Which General Permits are Available? (Footnotes to Flow Chart)

- 1) EPA has made general permits available for operators seeking NPDES authorization to discharge stormwater and non-stormwater to Waters of the U.S. Each general permit has its own eligibility criteria; and where such criteria cannot be satisfied, an operator may need to seek coverage under an alternative general permit or an individual permit.
- 2) EPA is also the permitting authority for Federal facilities located in VT and Indian Country in CT, MA and RI. (DGP and RGP only apply in MA, including Indian Country, and NH).
- 3) State Contacts and Web References:
 - CT: Chris Stone (chris.stone@po.state.ct.us), 860-424-3850 [web](#)
 - ME: Jim Cassida (james.cassida@maine.gov), 207-287-7691 [web](#)
 - RI: Margarita Chatterton (mchatterton@dem.state.ri.us), 401-222-4700 x 7605 [web](#)
 - VT: Refer to district permit writer (http://www.anr.state.vt.us/dec/waterq/stormwater/docs/District_Lookup_%20Tool_8-13-2008.xls), [web](#)
- 4) Land Disturbance does not include routine maintenance that is performed to maintain the original line and grade, hydraulic capacity or original purpose of the site (e.g., daily cover for landfills, maintenance of gravel roads or parking areas, landscape maintenance, etc.). "Waters of the U.S." is defined at [40 CFR §122.2](#).
- 5) Dewatering is defined as the pumping or draining of groundwater or stormwater accumulation from a well, excavation, sump or other subsurface reservoir; excluding any normally free flowing portion of a municipal, perimeter, yard or similar drain.
- 6) Permitting may still be required through EPA or state designation.
- 7) Discharges contaminated by pollutants include discharges from contaminated or formerly contaminated sites and/or discharges that contain pollutants not authorized for discharge by the DGP or CGP and those that have the reasonable potential to violate surface water quality standards.
- 8) Construction General Permit (CGP): <http://cfpub.epa.gov/npdes/stormwater/cgp.cfm>
- 9) Dewatering General Permit (DGP): <http://www.epa.gov/region1/npdes/dewatering.html>
- 10) Remediation General Permit (RGP): <http://www.epa.gov/region1/npdes/rqp.html>
- 11) Coverage under both CGP and RGP required.

Disclaimer: This information is guidance only and does not establish or affect legal rights or obligations. Agency decisions in any particular case will be made by applying the law and regulations to the specific facts of the case.