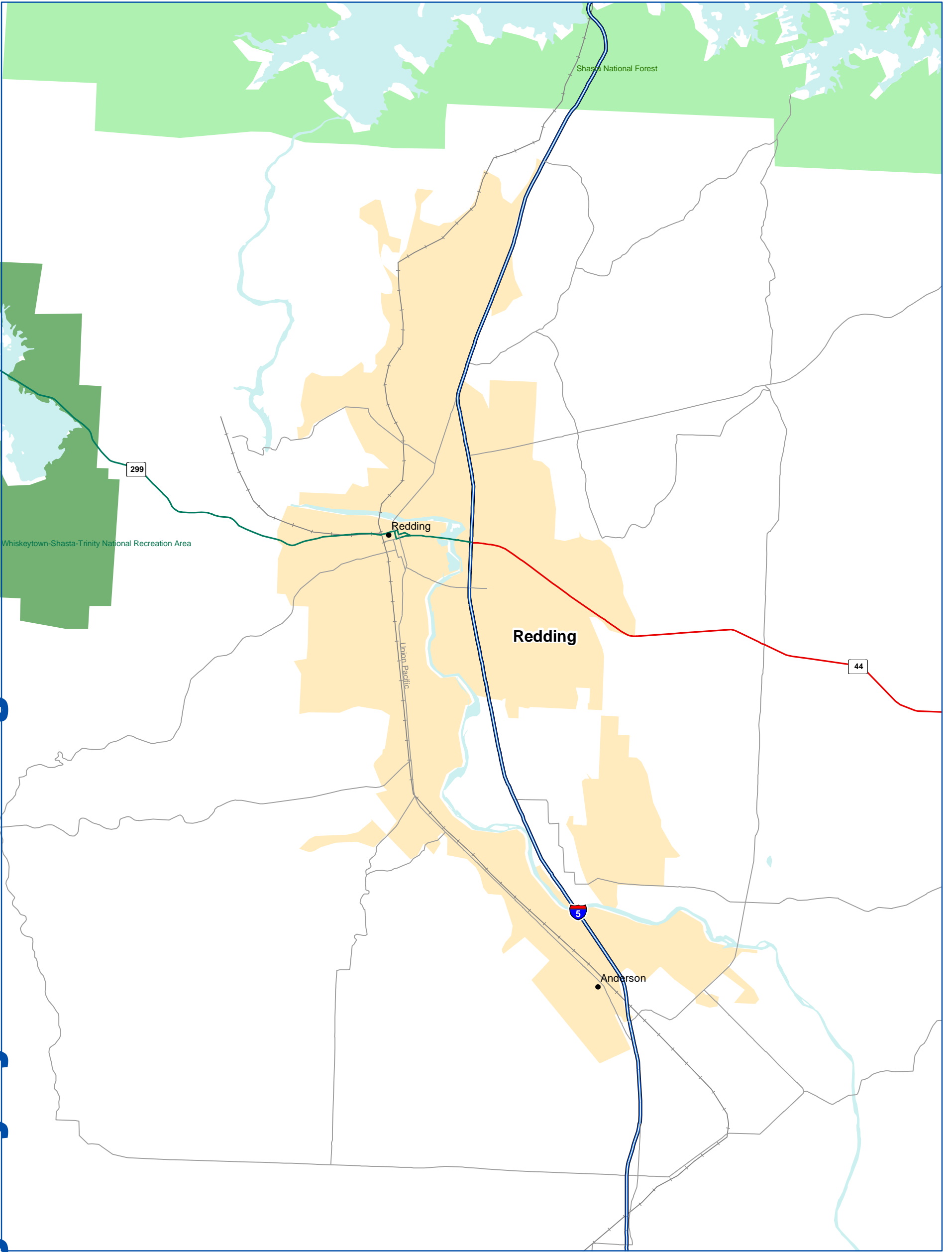


# National Highway System: Redding CA



U.S. Department of Transportation  
Federal Highway Administration

Eisenhower Interstate System	Census Urbanized Areas	Airport	Multipurpose Passenger Facility
Other NHS Routes	Indian Reservation	Intercity Bus Terminal	Port Terminal
Non-Interstate STRAHNET Route	Department of Defense	Ferry Terminal	Truck/Rail Facility
Major STRAHNET Connector	National Forest	Truck/Pipeline Terminal	AMTRAK Station
Intermodal Connector	National Park Service		Public Transit Station
Unbuilt NHS Routes	Water		
Other Roads (not on NHS)			
Railroad			

