

Figure 1: U.S. NAFTA Surface Trade: 1994 to 2001

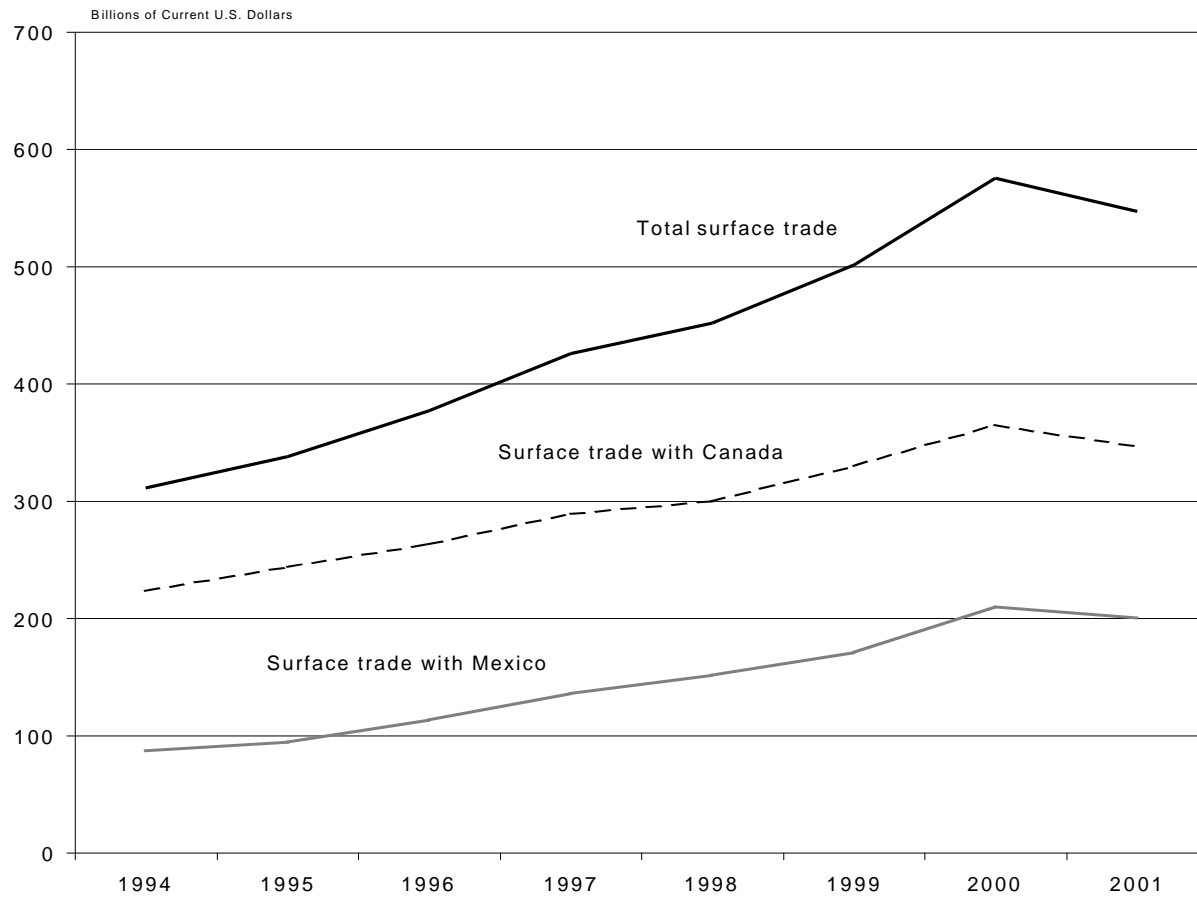


Figure 2: U.S. Monthly Surface Trade with NAFTA Partners: 2000 and 2001

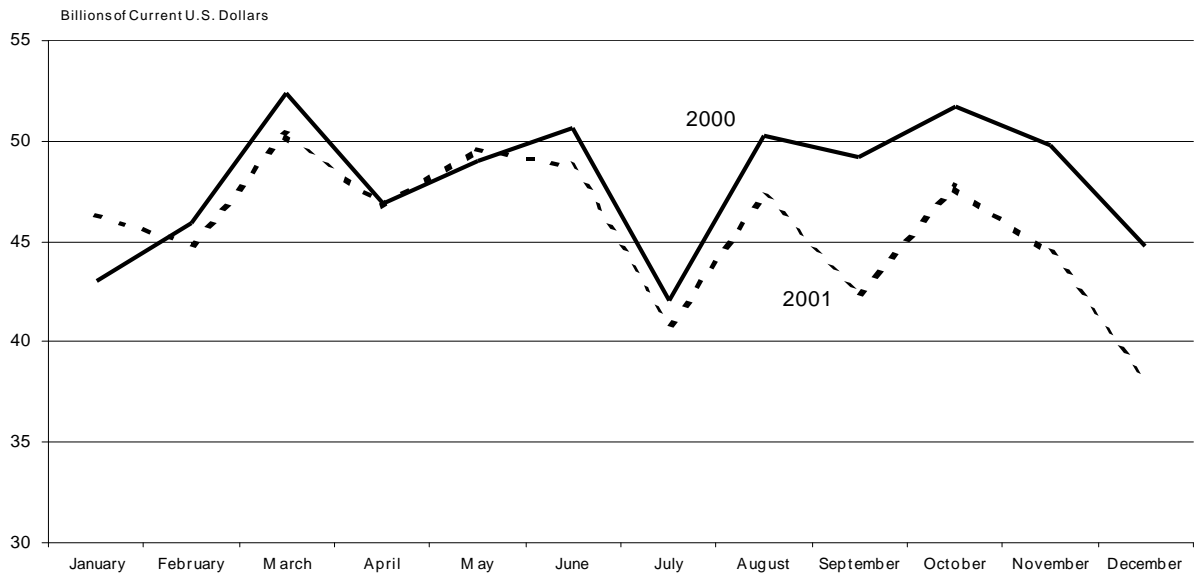


Figure 3: U.S. Surface Trade with NAFTA Partners by Mode: 2000 and 2001

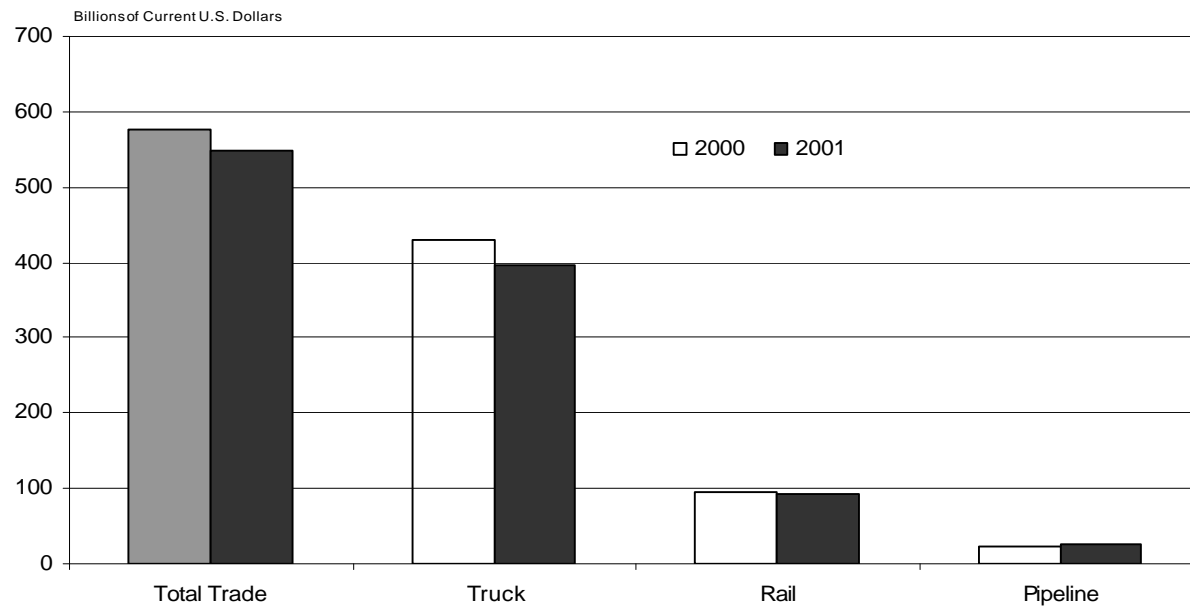


Table 1

U.S. Merchandise Trade with Canada and Mexico by Surface Modes: 2000 and 2001

(Value in millions of current U.S. dollars)

	2000	2001	Percent Change
U.S.-North American Trade			
Total U.S. trade with Canada and Mexico by all surface modes	575,713	547,312	-4.9
U.S. imports from Canada and Mexico by all surface modes	323,707	312,724	-3.4
U.S. exports to Canada and Mexico by all surface modes	252,006	234,588	-6.9
Total U.S. trade with Canada and Mexico by truck	428,700	395,425	-7.8
U.S. imports from Canada and Mexico by truck	216,485	203,507	-6.0
U.S. exports to Canada and Mexico by truck	212,215	191,918	-9.6
Total U.S. trade with Canada and Mexico by rail	94,198	92,617	-1.7
U.S. imports from Canada and Mexico by rail	70,755	69,255	-2.1
U.S. exports to Canada and Mexico by rail	23,442	23,362	-0.3
Total U.S. trade with Canada and Mexico by pipeline	23,592	26,428	12.0
U.S. imports from Canada and Mexico by pipeline	23,129	25,910	12.0
U.S. exports to Canada and Mexico by pipeline	463	517	11.7
U.S.-Canada Trade			
Total U.S. trade with Canada by all surface modes	365,118	346,515	-5.1
U.S. imports from Canada by all surface modes	210,270	200,853	-4.5
U.S. exports to Canada by all surface modes	154,847	145,662	-5.9
Total U.S. trade with Canada by truck	257,642	234,824	-8.9
U.S. imports from Canada by truck	127,816	117,130	-8.4
U.S. exports to Canada by truck	129,825	117,694	-9.3
Total U.S. trade with Canada by rail	62,646	60,171	-4.0
U.S. imports from Canada by rail	49,699	47,198	-5.0
U.S. exports to Canada by rail	12,947	12,973	0.2
Total U.S. trade with Canada by pipeline	23,279	26,130	12.2
U.S. imports from Canada by pipeline	23,117	25,908	12.1
U.S. exports to Canada by pipeline	162	221	37.0
U.S.-Mexico Trade			
Total U.S. trade with Mexico by all surface modes	210,595	200,797	-4.7
U.S. imports from Mexico by all surface modes	113,437	111,870	-1.4
U.S. exports to Mexico by all surface modes	97,159	88,926	-8.5

Total U.S. trade with Mexico by truck	171,058	160,600	-6.1
U.S. imports from Mexico by truck	88,669	86,377	-2.6
U.S. exports to Mexico by truck	82,389	74,223	-9.9
Total U.S. trade with Mexico by rail	31,552	32,446	2.8
U.S. imports from Mexico by rail	21,056	22,057	4.8
U.S. exports to Mexico by rail	10,496	10,389	-1.0
Total U.S. trade with Mexico by pipeline	313	298	-5.0
U.S. imports from Mexico by pipeline	12	2	-86.0
U.S. exports to Mexico by pipeline	302	296	-1.9

NOTE: Truck, Rail and Pipeline modes will not sum to total trade because not all land modes are included here. Other surface modes include mail, unknown and miscellaneous.

SOURCE: U.S. Department of Transportation, Bureau of Transportation Statistics, Transborder Surface Freight Data.

Table 2

North American Merchandise Trade by U.S. State by All Surface Modes: 2000 and 2001

(Value in millions of current U.S. dollars)

U.S. State	U.S.-North American Surface Trade			U.S.-Canada Surface Trade			U.S.-Mexico Surface Trade		
	2000	2001	Percent Change	2000	2001	Percent Change	2000	2001	Percent Change
Alabama	3,868	3,845	-0.6	2,572	2,591	0.7	1,296	1,253	-3.3
Alaska	201	303	50.9	186	275	47.9	15	28	89.9
Arizona	12,609	10,287	-18.4	2,157	2,150	-0.3	10,452	8,137	-22.2
Arkansas	1,834	2,022	10.2	1,501	1,630	8.6	333	391	17.5
California	53,652	53,845	0.4	21,530	21,623	0.4	32,122	32,222	0.3
Colorado	2,810	2,722	-3.1	2,351	2,192	-6.7	459	529	15.2
Connecticut	4,263	4,326	1.5	3,167	3,356	6.0	1,096	970	-11.6
Delaware	1,740	1,517	-12.8	1,350	1,099	-18.6	390	418	7.2
District of Columbia	130	122	-6.2	120	109	-8.8	10	13	23.1
Florida	7,015	7,067	0.7	4,350	4,471	2.8	2,665	2,596	-2.6
Georgia	10,599	9,903	-6.6	6,885	6,541	-5.0	3,714	3,362	-9.5
Hawaii	77	60	-21.7	74	57	-22.7	3	3	5.2
Idaho	912	893	-2.1	838	813	-2.9	74	80	7.8
Illinois	29,105	28,023	-3.7	23,158	22,750	-1.8	5,947	5,273	-11.3
Indiana	16,787	15,270	-9.0	10,733	9,745	-9.2	6,053	5,525	-8.7
Iowa	3,802	3,872	1.8	3,262	3,311	1.5	540	562	3.9
Kansas	2,923	3,571	22.2	2,354	2,924	24.2	569	647	13.6
Kentucky	8,163	7,319	-10.3	6,012	5,431	-9.7	2,151	1,888	-12.2
Louisiana	1,849	1,882	1.8	1,474	1,509	2.4	376	374	-0.4
Maine	2,652	2,695	1.6	2,602	2,657	2.1	51	37	-26.5
Maryland	2,796	2,862	2.4	2,024	2,085	3.0	772	778	0.7
Massachusetts	8,650	7,975	-7.8	7,420	6,958	-6.2	1,230	1,017	-17.3
Michigan	91,232	89,327	-2.1	68,438	61,787	-9.7	22,794	27,540	20.8
Minnesota	9,784	8,332	-14.8	8,693	7,354	-15.4	1,091	978	-10.3
Mississippi	1,647	1,647	0.0	890	864	-3.0	757	783	3.4
Missouri	6,973	6,344	-9.0	5,196	4,694	-9.7	1,778	1,650	-7.2
Montana	2,283	1,909	-16.4	2,194	1,863	-15.1	89	46	-48.2
Nebraska	1,348	1,593	18.2	1,031	1,097	6.4	317	497	56.8
Nevada	801	992	23.8	718	888	23.6	83	105	25.7
New Hampshire	1,614	1,725	6.8	1,413	1,402	-0.8	201	323	60.5
New Jersey	10,388	9,569	-7.9	8,331	7,736	-7.1	2,057	1,833	-10.9
New Mexico	534	473	-11.5	217	252	15.9	317	221	-30.2
New York	35,876	31,748	-11.5	31,293	27,133	-13.3	4,583	4,616	0.7
North Carolina	13,466	11,047	-18.0	7,654	6,289	-17.8	5,811	4,758	-18.1
North Dakota	1,594	1,716	7.6	1,537	1,616	5.2	58	100	72.8
Ohio	29,150	28,335	-2.8	23,646	22,919	-3.1	5,503	5,417	-1.6
Oklahoma	2,788	2,121	-23.9	2,222	1,629	-26.7	566	492	-13.0
Oregon	4,443	3,879	-12.7	3,589	3,398	-5.3	854	481	-43.7

Pennsylvania	17,495	15,697	-10.3	13,980	11,947	-14.5	3,515	3,751	6.7
Rhode Island	888	869	-2.2	720	725	0.8	169	144	-14.7
South Carolina	6,350	5,815	-8.4	4,192	4,067	-3.0	2,159	1,747	-19.1
South Dakota	573	611	6.7	481	531	10.4	92	80	-12.9
Tennessee	12,410	11,891	-4.2	7,669	8,097	5.6	4,741	3,794	-20.0
Texas	84,383	77,324	-8.4	15,427	14,972	-3.0	68,956	62,352	-9.6
Utah	1,477	1,902	28.7	1,336	1,659	24.2	142	242	71.0
Vermont	6,093	4,453	-26.9	6,053	4,427	-26.9	41	26	-36.8
Virginia	5,922	5,426	-8.4	4,238	3,717	-12.3	1,683	1,709	1.5
Washington	12,571	14,585	16.0	11,897	13,382	12.5	674	1,203	78.5
West Virginia	1,131	1,174	3.8	1,065	1,095	2.8	66	79	20.6
Wisconsin	9,476	9,131	-3.6	8,048	7,595	-5.6	1,428	1,537	7.6
Wyoming	1,444	1,310	-9.3	1,388	1,254	-9.7	55	56	0.6
U.S. State Unknown	25,139	25,985	3.4	15,444	17,850	15.6	9,696	8,135	-16.1
All U.S. States	575,713	547,312	-4.9	365,118	346,515	-5.1	210,595	200,797	-4.7

Key: NA = Not Available

NOTE: Total for all U.S. states includes data for shipments where the U.S. state of origin or destination was unknown. U.S. state surface trade value equals imports to the U.S. state of destination plus exports from the U.S. state of origin. The U.S. state of destination reflects the state of the importer of record. This state may not always represent the ultimate physical destination of shipments. The U.S. state of origin typically reflects the state of origin where the goods were grown, manufactured or otherwise produced. In some instances, however, it may not always reflect the actual state of physical origin. Shipments for Hawaii are intermodal, and are included in this dataset because a portion of the shipment moves by a land mode from either its origin or final destination.

SOURCE: U.S. Department of Transportation, Bureau of Transportation Statistics, Transborder Surface Freight Data

Table 3

Top 10 U.S. Land Ports for North American Merchandise Trade by Surface Modes: 2000 and 2001

(Value in thousands of current U.S. dollars)

U.S. Port	All Surface Modes			Truck			Rail		
	2000	2001	Percent Change	2000	2001	Percent Change	2000	2001	Percent Change
U.S.-North American Trade	575,713,245	547,311,628	-4.9	428,699,597	395,424,648	-7.8	94,197,649	92,616,783	-1.7
Detroit, MI	94,441,518	91,981,879	-2.6	85,467,799	79,761,907	-6.7	8,598,493	11,908,664	38.5
Laredo, TX	83,673,999	79,607,196	-4.9	60,046,649	55,298,351	-7.9	23,464,900	24,179,034	3.0
Buffalo-Niagara Falls, NY	70,132,341	60,477,988	-13.8	54,659,191	47,196,115	-13.7	14,473,457	10,497,387	-27.5
Port Huron, MI	59,703,785	55,647,839	-6.8	32,770,367	29,954,660	-8.6	24,645,025	22,914,274	-7.0
El Paso, TX	39,375,732	37,930,862	-3.7	36,007,673	34,697,348	-3.6	1,433,407	1,574,691	9.9
Otay Mesa Station, CA	18,773,451	19,400,955	3.3	18,759,879	19,384,773	3.3	0	0	NA
Champlain-Rouses Point, NY	17,259,857	16,162,966	-6.4	15,326,230	14,271,253	-6.9	1,041,280	1,098,415	5.5
Nogales, AZ	13,630,809	12,508,628	-8.2	11,046,139	9,963,889	-9.8	2,576,148	2,542,540	-1.3
Hidalgo, TX	12,593,610	12,422,911	-1.4	12,444,297	12,210,864	-1.9	132	411	211.2
Blaine, WA	12,303,110	11,686,810	-5.0	10,691,584	9,914,378	-7.3	1,535,734	1,724,323	12.3
U.S.-Canada Trade	365,117,865	346,514,925	-5.1	257,641,619	234,824,339	-8.9	62,645,743	60,170,601	-4.0
Detroit, MI	94,347,135	91,906,039	-2.6	85,374,557	79,686,619	-6.7	8,597,407	11,908,223	38.5
Buffalo-Niagara, NY	70,003,636	60,340,769	-13.8	54,530,589	47,059,297	-13.7	14,473,455	10,496,986	-27.5
Port Huron, MI	59,621,942	55,538,587	-6.8	32,689,077	29,845,882	-8.7	24,644,471	22,913,809	-7.0
Champlain-Rouses Point, NY	17,236,906	16,137,409	-6.4	15,303,357	14,245,944	-6.9	1,041,240	1,098,360	5.5
Blaine, WA	12,303,110	11,686,810	-5.0	10,691,584	9,914,378	-7.3	1,535,734	1,724,323	12.3
Alexandria Bay, NY	11,987,052	10,620,971	-11.4	11,980,953	10,615,148	-11.4	0	0	NA
Pembina, ND	10,576,988	8,885,779	-16.0	9,660,728	8,252,311	-14.6	180,199	106,860	-40.7
Sweetgrass, MT	7,772,807	8,268,973	6.4	6,446,133	6,887,982	6.9	470,192	563,838	19.9
Portal, ND	6,596,362	6,799,058	3.1	4,375,508	4,426,307	1.2	2,192,704	2,341,004	6.8
Eastport, ID	2,710,635	6,512,903	140.3	1,579,560	1,222,005	-22.6	907,008	818,947	-9.7
U.S.-Mexico Trade	210,595,380	200,796,703	-4.7	171,057,978	160,600,309	-6.1	31,551,906	32,446,182	2.8
Laredo, TX	83,673,999	79,607,196	-4.9	60,046,649	55,298,351	-7.9	23,464,900	24,179,034	3.0
El Paso, TX	39,375,732	37,930,862	-3.7	36,007,673	34,697,348	-3.6	1,433,407	1,574,691	9.9
Otay Mesa, CA	18,773,451	19,400,955	3.3	18,759,879	19,384,773	3.3	0	0	NA
Nogales, AZ	13,630,809	12,508,628	-8.2	11,046,139	9,963,889	-9.8	2,576,148	2,542,540	-1.3
Hidalgo, TX	12,593,610	12,422,911	-1.4	12,444,297	12,210,864	-1.9	132	411	211.2
Brownsville-Cameron, TX	12,108,262	10,911,207	-9.9	11,307,208	10,138,559	-10.3	745,900	735,032	-1.5
Calexico East, CA	8,319,549	7,347,677	-11.7	8,237,903	7,207,360	-12.5	81,361	140,271	72.4
Eagle Pass, TX	7,285,126	6,738,769	-7.5	4,134,911	3,599,088	-13.0	3,139,855	3,129,286	-0.3
Del Rio, TX	2,387,017	2,375,380	-0.5	2,386,699	2,375,056	-0.5	21	46	118.4
San Luis, AZ	1,225,711	1,007,321	-17.8	1,225,634	994,126	-18.9	20	34	NA

Key: NA = Not Available

NOTE: Truck and Rail modes will not sum to total land trade by port because not all land modes are included here. Other land modes include pipeline, mail, unknown and miscellaneous.

SOURCE: U.S. Department of Transportation, Bureau of Transportation Statistics, Transborder Surface Freight Data.

Table 4

Top 10 Commodities for North American Merchandise Trade by All Surface Modes: 2000 and 2001

(Value in millions of current U.S. dollars)

Rank	Commodity Code	Description	U.S.-North American Trade			U.S.-Canada Trade			U.S.-Mexico Trade		
			2000	2001	Percent Change	2000	2001	Percent Change	2000	2001	Percent Change
1	87	Vehicles, parts, and accessories	124,798	115,893	-7.1	89,570	80,805	-9.8	35,227	35,088	-0.4
2	85	Electrical machinery and equipment	89,166	76,924	-13.7	29,689	23,203	-21.8	59,477	53,721	-9.7
3	84	Nuclear reactors, boilers, machinery	75,038	70,598	-5.9	46,609	42,430	-9.0	28,429	28,167	-0.9
4	27	Mineral fuels, mineral oils and waxes	30,558	34,216	12.0	29,112	32,939	13.1	1,446	1,277	-11.7
5	98	Special classification provisions	20,834	22,216	6.6	12,611	14,578	15.6	8,223	7,638	-7.1
6	39	Plastics and articles thereof	21,899	21,271	-2.9	13,666	13,581	-0.6	8,233	7,690	-6.6
7	48	Paper and paperboard, articles of paper pulp	16,281	16,101	-1.1	13,379	13,337	-0.3	2,902	2,764	-4.8
8	90	Optical, photographic, surgical instruments	13,074	12,814	-2.0	6,301	5,523	-12.3	6,774	7,291	7.6
9	94	Furniture, bedding, mattress supports, lamps	13,168	12,517	-4.9	8,249	7,527	-8.7	4,919	4,989	1.4
10	44	Wood and articles of wood; wood charcoal	13,183	12,190	-7.5	12,349	11,488	-7.0	833	702	-15.7
		Total, All Commodities	575,713	547,312	-4.9	365,118	346,515	-5.1	210,595	200,797	-4.7

Key: NA = Not Available

NOTE: Commodity code is the Harmonized Schedule (HS) for internationally traded commodities.

SOURCE: U.S. Department of Transportation, Bureau of Transportation Statistics, Transborder Surface Freight Data