

39—EXPLANATION FOR CMYK COLOR CHART

DISCUSSION*

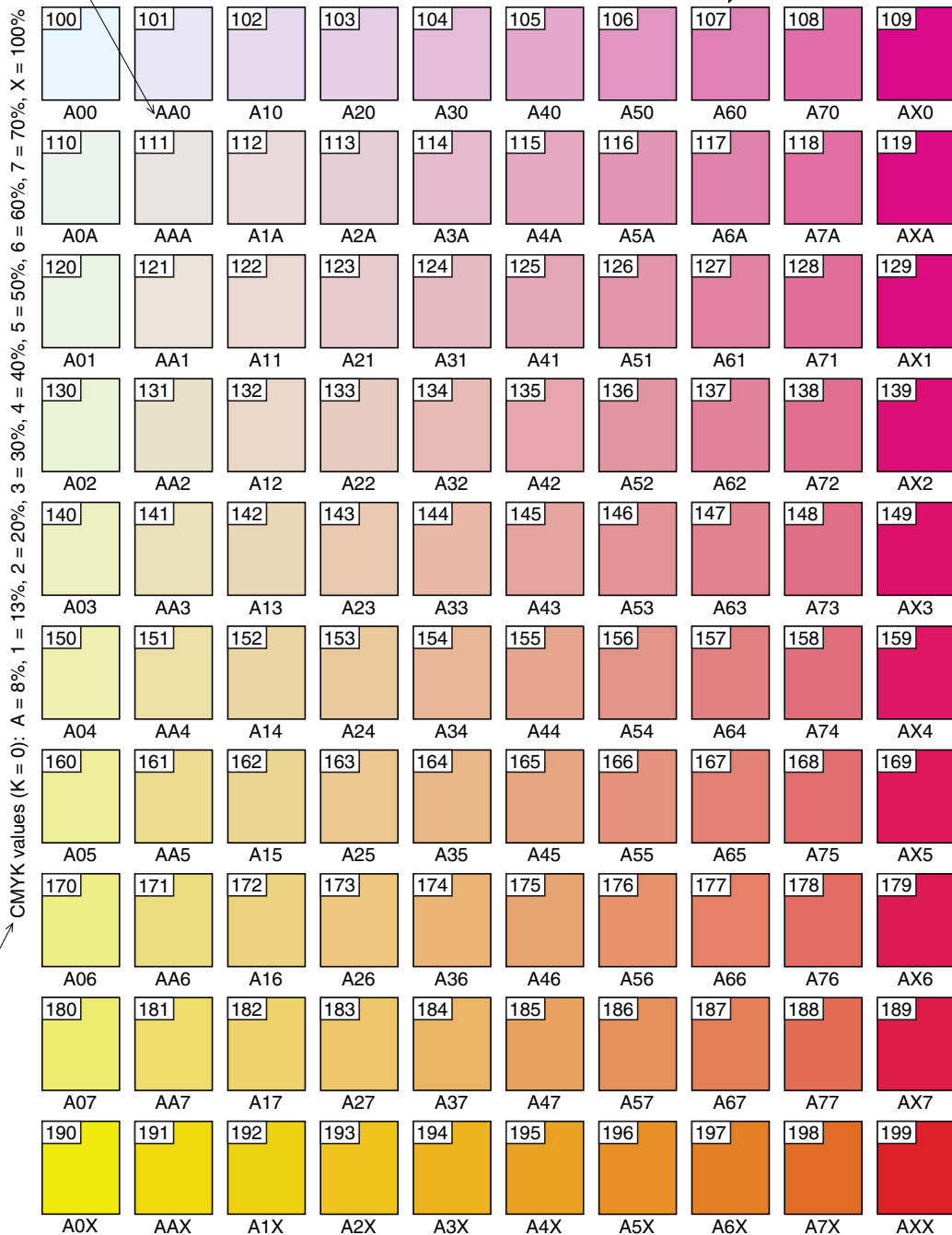
This diagram explains how to use the new CMYK Color Chart, which is enclosed in the sleeve on the inside back cover of this standard volume. For more specific information on the use of color (and patterns) on geologic maps, see Section 5, entitled "Guidelines for Map Color and Pattern Selection," in the accompanying introductory text.

This new CMYK Color Chart was designed in Adobe Illustrator 8.0.1 (Macintosh) to closely replicate the colors on the U.S. Geological Survey's original offset-printed process-ink color chart, entitled "Printing Colors and Screens in Use by the U.S. Geological Survey for Geologic and Hydrologic Maps" [yellow/magenta/cyan version], which has long been used at the USGS for choosing colors on geologic maps. The new color chart contains the same colors that were in the original offset-printed USGS color chart; however, the old color codes indicating the YMC (yellow/magenta/cyan) values have been updated to show CMYK (cyan/magenta/yellow, with K = 0) values, to conform to industry standards. In addition, each color now has associated with it a generic look-up table number that can be used to access a particular color if it has been incorporated into a shadeset.

CMYK (K = 0) value shown below box (see left side of diagram for explanation of abbreviations used)

Generic lookup-table number shown in upper left-hand corner of box (can be used to access a particular color from a shadeset)

8% CYAN WITH MAGENTA AND YELLOW



Abbreviations used to specify CMY values