

FIG. 123.—Diatom plankton in the western part of Georges Bank, July 9, 1913 (station 10059), dominated by *Guinardia flaccida* and *Eucampia*. (See list, p. 431.)

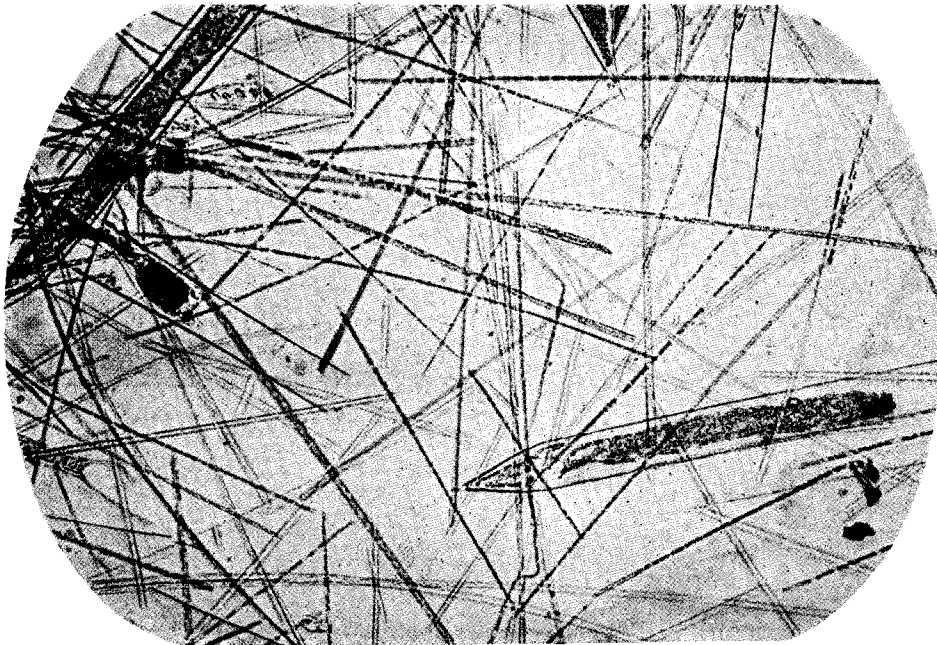


FIG. 124.—Diatom plankton on the western part of Georges Bank, July 23, 1916 (station 10347), dominated by *Thalassiothrix longissima* and *Rhizosolenia styliformis* (see list, p. 431). $\times 75$