

# International Emulator (INTEREM)



Version 1.0  
May 9, 2007

A component of:

**SIGNAL**

Simulation and Integration of Ground, Network, and Air Links

Status:

Operational

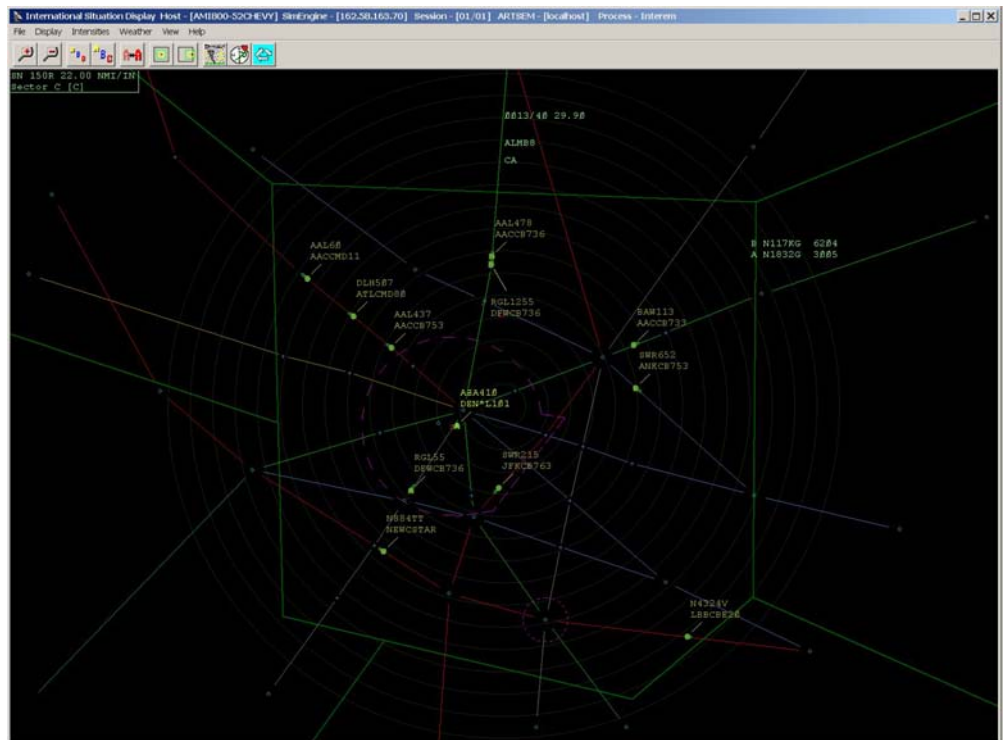
Connections:

Connects to Charter as a client, connects to CommonARTS as a client.

Overview:

INTEREM is based on the STARSEM software. Enhancements in this software include:

- A 400 mile range
- Click and drag data block relocation
- Enhanced Range Bearing as found in the Pilot & SCOTTY components



INTEREM Screenshot