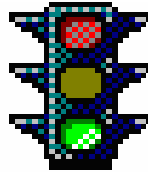


# Construct2000



Version 1.0  
November 15, 2007

A component of:

**SIGNAL**

Simulation and Integration of Ground, Network, and Air Links

**Status:**

Operational

**Connections:**

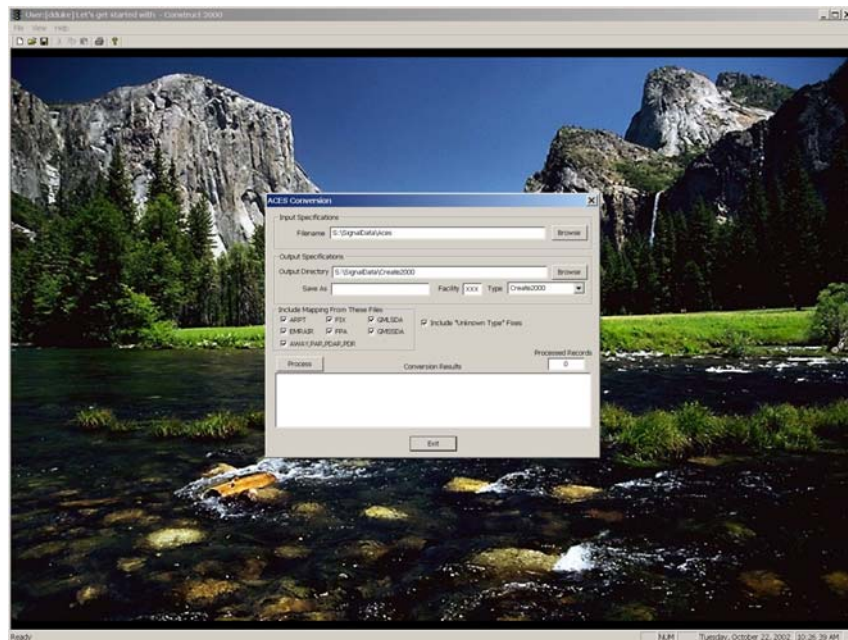
None

**Overview:**

Construct provides for the standardization of various data source formats into the SIGNAL standard XML format for use with the SIGNAL simulation components.

**These formats are:**

- OpenCREATE (Old Version of Create)
- NAS ACES Input data
- SDAT V4 & V5



Construct2000 Screenshot