



# National Weather Service

## Storm Data and Unusual Weather Phenomena



September 2005

Location	Date	Time Local/ Standard	Path Length (Miles)	Path Width (Yards)	Number of Persons Killed	Number of Persons Injured	Estimated Damage Property	Estimated Damage Crops	Character of Storm
----------	------	----------------------------	---------------------------	--------------------------	--------------------------------	---------------------------------	---------------------------------	------------------------------	--------------------

### ARKANSAS, Southeast

ARZ074>075

Ashley - Chicot

24	0800CST				0	0	350K	700K	Hurricane/Typhoon
25	2100CST								

See narrative for Mississippi.

Ashley County

2 NNE Hamburg to  
Fountain Hill

24	1140CST	7	100		0	0	100K	75K	Tornado (F1)
	1147CST								

This tornado touched down just Northwest of Hamburg and tracked 7 miles north-northwest to Fountain Hill. Numerous trees and power lines were blown down along the path.

Chicot County

7 N Eudora

24	1151CST	1	100		0	0	300K		Tornado (F1)
	1152CST								

This tornado briefly touched down just west of Chicot Junction. The brief path of the tornado was across open farm land. However, it did manage to hit an electrical sub station. The tornado caused substantial damage to the sub station. Actually, the winds from the tornado threw grass and other debris into the station causing it to shut down.

Chicot County

1 W Eudora to  
2 NW Eudora

24	1654CST	1	75		0	0	60K		Tornado (F1)
	1655CST								

This tornado was spotted just west of Eudora damaging trees and power lines. The tornado was briefly on the ground as it moved northwest.

Chicot County

6 WSW Lake Vlg to  
7 W Lake Vlg

24	1729CST	2	75		0	0	150K		Tornado (F1)
	1732CST								

This tornado was spotted between Lake Village and Montrose moving across farm land. This tornado was on the ground for nearly 2 miles and damaged numerous trees and power lines.

Chicot County

Dermott

24	2315CST				0	0	30K		Thunderstorm Wind (EG55)
----	---------	--	--	--	---	---	-----	--	--------------------------

Numerous trees and power lines were blown down.

Chicot County

Eudora

24	2320CST				0	0	50K		Thunderstorm Wind (EG60)
	2323CST								

Numerous trees and power lines down in and around Eudora.

Chicot County

Lake Vlg to  
5 NNE Lake Vlg

24	2323CST				0	0	250K		Thunderstorm Wind (EG65)
	2327CST								

Numerous trees and power lines down across town and along a swath to the north-northeast around the north shore of the lake. A few structures sustained roof damage just north of Lake Chicot.

### LOUISIANA, Northeast

LAZ007>009-015>016-  
023>026

Morehouse - West Carroll - East Carroll - Richland - Madison - Franklin - Catahoula - Tensas - Concordia

24	0800CST				0	0	3.0M	5.8M	Hurricane/Typhoon
25	2100CST								

See narrative for Mississippi.

Catahoula Parish

Jonesville to  
4 N Jonesville

24	1445CST				0	1	100K		Thunderstorm Wind (EG57)
	1450CST								

Numerous large limbs were blown down around Jonesville and one man was injured by these limbs as he was walking outside. Additionally, these straight line winds traveled northward and caused roof damage and trees to be blown down in the Sandy Lake Community.



# National Weather Service

## Storm Data and Unusual Weather Phenomena



September 2005

Location	Date	Time Local/ Standard	Path Length (Miles)	Path Width (Yards)	Number of Persons Killed	Number of Persons Injured	Estimated Damage Property	Estimated Damage Crops	Character of Storm
----------	------	----------------------------	---------------------------	--------------------------	--------------------------------	---------------------------------	---------------------------------	------------------------------	--------------------

### LOUISIANA, Northeast

#### East Carroll Parish

2 W Transylvania to 2 WNW Transylvania	24	1614CST 1615CST	1	50	0	0			<b>Tornado (F0)</b>
---	----	--------------------	---	----	---	---	--	--	---------------------

This tornado briefly touched down west of Transylvania and moved north-northwest across an open field. Law enforcement officials watched the funnel cloud develop and then touch down. No damage occurred as the tornado moved across an open field

#### Concordia Parish

5 E Monterey to Vidalia	24	1750CST 1805CST			0	0	50K	100K	<b>Thunderstorm Wind (EG55)</b>
----------------------------	----	--------------------	--	--	---	---	-----	------	---------------------------------

Numerous trees and a few power lines were blown down within a large swath from just east of Monterey northward to Vidalia and Ferriday.

#### Concordia Parish

4 N Monterey to 5 NNE Monterey	24	1856CST 1859CST	2	75	0	0	70K		<b>Tornado (F0)</b>
-----------------------------------	----	--------------------	---	----	---	---	-----	--	---------------------

This tornado touched down on the north end of Cocodrie Lake on Highway 565. Some awning was torn from a house and 1 tree was uprooted. Minor debris was scattered in the field to the north. The tornado continued moving north-northeast and crossed Highway 129. Here it damaged a shed out in an open field and then blew the skirting out from a mobile home. A few trees were damaged at this location as well.

#### Franklin Parish

4 SW Wisner to 1 W Wisner	24	1917CST 1920CST			0	0	2K		<b>Thunderstorm Wind (EG55)</b>
------------------------------	----	--------------------	--	--	---	---	----	--	---------------------------------

Numerous large limbs and a few trees were blown down.

#### Franklin Parish

4 NE Winnsboro to 7 NE Winnsboro	24	1937CST 1942CST			0	0	30K	20K	<b>Thunderstorm Wind (EG55)</b>
-------------------------------------	----	--------------------	--	--	---	---	-----	-----	---------------------------------

A swath of wind damage occurred just to the northeast of Winnsboro. Several trees, numerous large limbs and a few power lines were blown down along Maud Road, Curtis Traxler Road, Lawson Road and Highway 577.

#### Catahoula Parish

1 SE Archie to 5 NNW Jonesville	24	2106CST 2118CST	9	50	0	0	200K	100K	<b>Tornado (F1)</b>
------------------------------------	----	--------------------	---	----	---	---	------	------	---------------------

This tornado touched down just southeast of Archie and tracked for nearly 9 miles to the northeast. Numerous trees were downed with many snapped and broken. Additionally, 2 homes sustained roof damage with many shingles blown off

#### Catahoula Parish

Harrisonburg	24	2122CST			0	0			<b>Thunderstorm Wind (EG50)</b>
--------------	----	---------	--	--	---	---	--	--	---------------------------------

One large tree was blown down at the courthouse along with numerous large limbs around town

#### Richland Parish

2 SW Delhi	24	2240CST			0	0	20K		<b>Thunderstorm Wind (EG58)</b>
------------	----	---------	--	--	---	---	-----	--	---------------------------------

Power lines were blown down.

#### East Carroll Parish

Countywide	24	2255CST 2315CST			0	0	80K	50K	<b>Thunderstorm Wind (EG55)</b>
------------	----	--------------------	--	--	---	---	-----	-----	---------------------------------

A swath of wind damage occurred across a large portion of the western side of the parish. Numerous trees and power lines were blown down.

#### Concordia Parish

1 S Clayton to 1 SE Clayton	24	2342CST 2344CST	1	75	0	0	3K		<b>Tornado (F0)</b>
--------------------------------	----	--------------------	---	----	---	---	----	--	---------------------

This weak tornado touched down just south of Clayton and tracked northeast for 1 mile. It crossed Highway 65 and 900 where it tore off some limbs from trees and uprooted 6 trees.



# National Weather Service

## Storm Data and Unusual Weather Phenomena



September 2005

Location	Date	Time Local/ Standard	Path Length (Miles)	Path Width (Yards)	Number of Persons Killed	Injured	Estimated Damage Property	Crops	Character of Storm
----------	------	----------------------------	---------------------------	--------------------------	--------------------------------	---------	---------------------------------	-------	--------------------

### LOUISIANA, Northeast

#### ConcordiaParish

Clayton to 3 NE Clayton	24	2344CST 2347CST	3	50	0	1	50K		Tornado (F0)
----------------------------	----	--------------------	---	----	---	---	-----	--	--------------

#### TensasParish

9 SW Waterproof to 6 N Waterproof	24 25	2347CST 0004CST	11	100	0	2	1M	100K	Tornado (F3)
--------------------------------------	----------	--------------------	----	-----	---	---	----	------	--------------



*Two story home destroyed and moved off foundation.*

This tornado first touched down in Clayton and tracked to the northeast for 14 miles to 6 miles north of Waterproof. The tornado was on the ground for 3 miles in Concordia parish before it moved into Tensas parish. The damage in Clayton and just to the northeast was confined to a few trees uprooted and snapped with one tree landing on a mobile home causing 1 injury. The tornado became more intense as it moved across southern Tensas parish. The tornado tracked nearly 6 miles across swamp land before it slammed into a small church on Highway 566. The church was totally destroyed as it was blown off its pillars and deposited in a tree and across the Highway. After traveling across more fields for 2 miles the tornado hit the "Thunderbird House". Here the tornado was at its peak intensity and caused the most significant damage. All the trees on the property were uprooted and mangled, a john boat was wrapped in a tree like tin foil and the large barn in the back yard was totally destroyed. The large house had its second story torn off and deposited 1/4 to 1/2 a mile down the path. This house was around 100 years old, between 5000-6000 sq ft and firmly built. The tornado picked the house up and moved it 4 feet and tore off 2 of the side walls. Additionally, both vehicles in the driveway were moved some 10-15 feet and heavily damaged by debris. The tornado continued to the northeast where it destroyed another home blowing off the roof and all the exterior walls. At this location, a car was picked up and flipped over onto a pile of downed trees. A house on the edge of the path had widows blown out and part of the roof blown off.

This tornado had a total path length of 14 miles across Concordia and Tensas parishes. Overall the tornado was not very wide but it was very intense. Fortunately, the tornado moved across a sparsely populated and rural area keeping significant damage to a minimum.

#### RichlandParish

Rayville	25	0000CST 0200CST			0	0	50K		Flash Flood
----------	----	--------------------	--	--	---	---	-----	--	-------------

Several streets were flooded along with a few roads around the parish.



# National Weather Service

## Storm Data and Unusual Weather Phenomena



September 2005

Location	Date	Time Local/ Standard	Path Length (Miles)	Path Width (Yards)	Number of Persons Killed	Number of Persons Injured	Estimated Damage Property	Estimated Damage Crops	Character of Storm
----------	------	----------------------------	---------------------------	--------------------------	--------------------------------	---------------------------------	---------------------------------	------------------------------	--------------------

### LOUISIANA, Northeast

#### FranklinParish

5 S Crowville	25	0039CST 0040CST	0.7	100	0	0	200K		Tornado (F0)
---------------	----	--------------------	-----	-----	---	---	------	--	--------------

This tornado touched down south of Crowville and damaged the roof at Ward 3 School. Additionally, few trees had broken limbs.

#### MadisonParish

4 S Tallulah to 3 SE Tallulah	25	0043CST 0049CST	4	75	0	0	25K		Tornado (F0)
----------------------------------	----	--------------------	---	----	---	---	-----	--	--------------

This weak tornado touched down in an open field and tracked northeast for 4 miles. An outbuilding was blown over and tin was scattered across the field. Several trees were blown over in a bayou along Highway 603. Just south of Interstate 20, Tin and parts of a billboard were scattered in a field along with tree branches snapped.

#### ConcordiaParish

Countywide	25	0300CST 0600CST			0	0	50K	300K	Flash Flood
------------	----	--------------------	--	--	---	---	-----	------	-------------

#### TensasParish

Countywide	25	0800CST 1100CST			0	0	100K	800K	Flash Flood
------------	----	--------------------	--	--	---	---	------	------	-------------

Early Sunday morning, a band of persistent rain and thunderstorms moved over a corridor of Concordia and Tensas Parishes. This persistent band produced a swath of 5 to 7 inches of rain in just a few hours. This locally heavy rain significantly flooded farm fields along with several parish roads.

### MISSISSIPPI, Central

**MSZ018>019-025-027-034>036-040>043-047>049-053>055-059>064-072**     **Bolivar - Sunflower - Leflore - Carroll - Washington - Humphreys - Holmes - Issaquena - Sharkey - Yazoo - Madison - Warren - Hinds - Rankin - Claiborne - Copiah - Simpson - Jefferson - Adams - Franklin - Lincoln - Lawrence - Jefferson Davis - Marion**

24	0800CST				0	0	485K	2.3M	Hurricane/Typhoon
25	2100CST								

Hurricane Rita made landfall during the morning of September 24th near the Texas, Louisiana state line at the Sabine Pass. The outer bands of Rita affected portions of Southwest Mississippi, all of Northeast Louisiana and a portion of Southern Arkansas early Saturday into Sunday. The major impacts from this hurricane were the large severe weather/tornado outbreak, heavy rainfall and lastly, tropical storm force winds and gusts across the west and southwest portion of the area

The severe weather outbreak, spawned from the outer edges of Rita, lasted about 36 hours from Saturday into Sunday evening. Officially, 55 tornadoes occurred across the Jackson, Ms, National Weather Service (NWS), county warning area (CWA). This makes the tornado outbreak during Rita the largest tornado outbreak in the NWS Jackson CWA in recorded history. Of the 55 total tornadoes, 1 was rated an F3 and 7 were rated F2. Additionally, 1 fatality occurred in Humphreys county and there were a total of 16 injuries. As a final note, tornado outbreaks are not uncommon during landfalling tropical cyclones. In fact, Hurricane Andrew produced 26 tornadoes across Mississippi in late August 1992. As you can see, the tornadoes during Rita (55) far surpass what occurred with Andrew (26).

Heavy rain became a problem as a large area across Western Mississippi, Northeast Louisiana and Southeast Arkansas received 4 to 7 inches of rain. A smaller corridor of the region, generally along the Big Black River, received 7 to 10 inches early Sunday morning. This heavy rain caused areas of flooding for many locations with the worst flooding occurring in an area close to the Big Black River. The most significant flooding occurred in Warren and Yazoo counties where many homes were flooded as well several as roads washed out. Additionally, this heavy rain fell at a vulnerable time for many crops across the region. The main impact was to the cotton crop as many plants had the cotton open then became wet as the heavy rains fell.

Lastly, tropical storm force winds extended out far enough from Rita to give a portion of the region sustained winds between 25 and 35 mph with wind gusts as high as 40 to 50 mph. These gradient winds from Rita were mainly confined to areas west of Interstate 55 from Grenada to Jackson, and then south-eastward from Jackson to Columbia. These winds were responsible for downing many trees and power lines across the western portion of the Jackson CWA, as well as having some trees fall on homes



# National Weather Service

## Storm Data and Unusual Weather Phenomena



September 2005

Location	Date	Time Local/ Standard	Path Length (Miles)	Path Width (Yards)	Number of Persons Killed	Number of Persons Injured	Estimated Damage Property	Estimated Damage Crops	Character of Storm
----------	------	----------------------------	---------------------------	--------------------------	--------------------------------	---------------------------------	---------------------------------	------------------------------	--------------------

### MISSISSIPPI, Central

#### Franklin County

4 NNE Mc Call Creek to 4.5 NNE Mc Call Creek	24	0815CST 0816CST	0.5	100	0	0	10K		Tornado (F0)
---	----	--------------------	-----	-----	---	---	-----	--	--------------

This weak tornado briefly touched down around Dummy Line Road and tore off numerous limbs and downed a few trees.

#### Claiborne County

3 SE Pattison to 9 N Port Gibson	24	0935CST 0955CST			0	0	10K	25K	Thunderstorm Wind (EG55)
-------------------------------------	----	--------------------	--	--	---	---	-----	-----	--------------------------

A "Mini" Supercell thunderstorm moved quickly north-northwest across Claiborne county. This storm produced scattered damage along its path. The damage was confined to numerous trees damaged or downed along a 17 mile path as well as a few power lines taken down.

#### Warren County

6 S Yokena to 3 WSW Yokena	24	0955CST 1000CST			0	0	10K		Thunderstorm Wind (EG52)
-------------------------------	----	--------------------	--	--	---	---	-----	--	--------------------------

The "Mini" Supercell storm continued out of Northwest Claiborne county and moved across extreme Southwest Warren county. This storm continued to damage and down several trees as it quickly moved north-northwest.

#### Hinds County

4 NW Utica to 6 NW Utica	24	1014CST 1015CST	2	75	0	0	20K		Tornado (F0)
-----------------------------	----	--------------------	---	----	---	---	-----	--	--------------

This weak tornado touched down just Northwest of Utica and crossed Cayuga Road. Several trees were snapped with a few uprooted.

#### Adams County

Natchez	24	1019CST 1023CST			0	0	60K	20K	Thunderstorm Wind (EG50)
---------	----	--------------------	--	--	---	---	-----	-----	--------------------------

Several trees were blown down. One tree was blown down on 2 cars totaling the vehicles

#### Hinds County

4 W Hubbard to 4.5 W Hubbard	24	1020CST 1021CST	0.5	50	0	0	5K		Tornado (F0)
---------------------------------	----	--------------------	-----	----	---	---	----	--	--------------

#### Claiborne County

6 NNE Reganton	24	1021CST 1022CST	0.3	75	0	0	5K		Tornado (F0)
----------------	----	--------------------	-----	----	---	---	----	--	--------------

#### Warren County

9 S Bovina to 8 S Bovina	24	1022CST 1023CST	1.5	75	0	0	30K		Tornado (F1)
-----------------------------	----	--------------------	-----	----	---	---	-----	--	--------------

This tornado touched down in extreme West-Central Hinds county very near the Claiborne county line. This area can best be described as the area where Hinds, Claiborne and Warren county meet in the Big Black River bottom just south of Highway 27. The tornado moved north-northwest and crossed the extreme northeast corner of Claiborne county before moving into Warren county. The tornado moved into Warren county, just south of Highway 27, then crossed Highway 27 before dissipating. Numerous trees were snapped and uprooted. The total path length across the 3 counties was 3 miles.

#### Jefferson County

6 NW Fayette	24	1059CST			0	0	1K		Thunderstorm Wind (EG50)
--------------	----	---------	--	--	---	---	----	--	--------------------------

A few trees were blown down along the Natchez Trace.

#### Issaquena County

Mayersville	24	1120CST			0	0	10K		Thunderstorm Wind (EG60)
-------------	----	---------	--	--	---	---	-----	--	--------------------------

Two power poles were snapped along Highway 1.

#### Rankin County

1 E Fannin	24	1114CST			0	0			Funnel Cloud
------------	----	---------	--	--	---	---	--	--	--------------

#### Hinds County

8 W Brownsville	24	1230CST 1231CST	0.7	50	0	0	5K		Tornado (F0)
-----------------	----	--------------------	-----	----	---	---	----	--	--------------

This weak tornado briefly touched down near the Lynchburg Community. A few trees were snapped and damaged.



# National Weather Service

## Storm Data and Unusual Weather Phenomena



September 2005

Location	Date	Time Local/ Standard	Path Length (Miles)	Path Width (Yards)	Number of Persons Killed	Number of Persons Injured	Estimated Damage Property	Estimated Damage Crops	Character of Storm
----------	------	----------------------------	---------------------------	--------------------------	--------------------------------	---------------------------------	---------------------------------	------------------------------	--------------------

### MISSISSIPPI, Central

#### Warren County

4 N Youngton to 7 N Youngton	24	1237CST 1240CST			0	0	10K		Thunderstorm Wind (EG53)
---------------------------------	----	--------------------	--	--	---	---	-----	--	--------------------------

Several trees were blown down as a "Mini" supercell thunderstorm moved across the extreme northeast corner of Warren county

#### Lincoln County

West Lincoln	24	1250CST			0	0	5K		Thunderstorm Wind (EG55)
--------------	----	---------	--	--	---	---	----	--	--------------------------

A few power lines were blown down around West Lincoln.

#### Washington County

3 SE Greenville to 2 ENE Greenville	24	1310CST 1313CST	2	300	0	0	680K		Tornado (F2)
--	----	--------------------	---	-----	---	---	------	--	--------------

This strong tornado touched down a few miles southeast of Downtown Greenville on Dodd Road. The tornado tracked 2 miles to the northwest, crossed Highway 82 and dissipated at the Delta Village mobile home park. Ten mobile homes were significantly damaged or destroyed, 15 sheds were destroyed and 3 more were damaged. One barn was destroyed along with 2 carports heavily damaged. One business had its roof blown off and a nearby tower was blown over. Additionally, numerous power poles and power lines were taken down along the path.

#### Warren County

Bovina to 3 N Redwood	24	1310CST 1325CST			0	0	2K	40K	Thunderstorm Wind (EG50)
--------------------------	----	--------------------	--	--	---	---	----	-----	--------------------------

A swath of straight line winds moved through a portion of Central Warren county from around Bovina northward to just north of Redwood. Several trees were damaged or blown down along the swath.

#### Hinds County

4 S Clinton	24	1318CST			0	0			Funnel Cloud
-------------	----	---------	--	--	---	---	--	--	--------------

#### Hinds County

Clinton	24	1325CST			0	0	10K		Thunderstorm Wind (EG55)
---------	----	---------	--	--	---	---	-----	--	--------------------------

A few trees and power lines were blown down at Monroe and Spores Streets

#### Hinds County

2 E Brownsville	24	1332CST			0	0	2K		Thunderstorm Wind (EG50)
-----------------	----	---------	--	--	---	---	----	--	--------------------------

A few trees were blown down along Highway 22 just east of Brownsville.

#### Hinds County

2 E Brownsville	24	1332CST			0	0	2K		Thunderstorm Wind (EG50)
-----------------	----	---------	--	--	---	---	----	--	--------------------------

A few trees were blown down along Highway 22 just east of Brownsville.

#### Attala County

2 ESE Kosciusko	24	1338CST			0	0			Funnel Cloud
-----------------	----	---------	--	--	---	---	--	--	--------------

#### Attala County

5 ENE Kosciusko	24	1407CST			0	0			Funnel Cloud
-----------------	----	---------	--	--	---	---	--	--	--------------

#### Washington County

3 NW Winterville	24	1412CST 1413CST	0.5	100	0	0			Tornado (F0)
------------------	----	--------------------	-----	-----	---	---	--	--	--------------

#### Bolivar County

1 WSW Lamont to 3.5 NW Lamont	24	1413CST 1417CST	3.5	100	0	0			Tornado (F0)
----------------------------------	----	--------------------	-----	-----	---	---	--	--	--------------

This tornado touched down in an open field just to the southwest of Lamont near the Washington/Bolivar county line. The tornado was photographed as it moved across farm land. No damage occurred as the tornado stayed in the open fields. This tornado had a total path length of 4 miles. Additionally, this tornado formed from the same parent thunderstorm that produced the F2 tornado just east of Greenville.

#### Humphreys County

1 W Silver City to Belzoni Muni Arpt	24	1435CST 1440CST	4	50	0	0	8K	5K	Tornado (F0)
---	----	--------------------	---	----	---	---	----	----	--------------

This weak tornado touched down on the western edge of Silver City and tracked north-northwest for 4 miles to the Belzoni



# National Weather Service

## Storm Data and Unusual Weather Phenomena



September 2005

Location	Date	Time Local/ Standard	Path Length (Miles)	Path Width (Yards)	Number of Persons Killed	Number of Persons Injured	Estimated Damage Property	Estimated Damage Crops	Character of Storm
----------	------	----------------------------	---------------------------	--------------------------	--------------------------------	---------------------------------	---------------------------------	------------------------------	--------------------

### MISSISSIPPI, Central

Municipal Airport. Damage was limited to snapped limbs and minor damage to the roof of one home.

#### Hinds County

##### Jackson

24	1454CST 1600CST				0	0	15K		<b>Flash Flood</b>
----	--------------------	--	--	--	---	---	-----	--	--------------------

Bands of thunderstorms repeatedly moved over the Downtown area for a little over an hour causing several roads to be covered by nearly a foot of water. These bands of rains produced a quick 2 to 3 inches of rain. This locally heavy rain caused several intersections in North Jackson to be under water and a portion of Interstate 55 southbound had standing water on it.

#### Adams County

##### Natchez to 3 N Natchez

24	1501CST 1507CST				0	0	220K	50K	<b>Thunderstorm Wind (EG55)</b>
----	--------------------	--	--	--	---	---	------	-----	---------------------------------

Numerous trees were blown down around Natchez as severe straight line winds blew through. One home had a tree fall through the house on Clarence Road. Another home had a tree damage the corner of the house as well as having a shed, boat and pickup truck damaged.

#### Yazoo County

##### Yazoo City

24	1503CST				0	0	3K		<b>Thunderstorm Wind (EG50)</b>
----	---------	--	--	--	---	---	----	--	---------------------------------

A couple of trees were blown down in the City.

#### Humphreys County

##### 3 NNW Belzoni to 4 NNW Belzoni

24	1518CST 1520CST	1.5	75		0	0	150K	150K	<b>Tornado (F1)</b>
----	--------------------	-----	----	--	---	---	------	------	---------------------

This tornado touched down just north of Belzoni and tracked for 1.5 miles before dissipating. This tornado downed numerous trees and blew irrigation equipment across a field. Additionally, one home and a church sustained major roof damage

#### Humphreys County

##### 4 E Isola to 4 NE Isola

24	1525CST 1528CST	3	100		1	2	50K	50K	<b>Tornado (F1)</b>
----	--------------------	---	-----	--	---	---	-----	-----	---------------------

M50MH

#### Sunflower County

##### 5 SSE Inverness to 4.5 SSE Inverness

24	1528CST 1529CST	0.5	100		0	0			<b>Tornado (F1)</b>
----	--------------------	-----	-----	--	---	---	--	--	---------------------



*Mobile home destroyed NE of Isola off Sky Lake Road, In far northern Humphreys county.*

This tornado touched down just east of Isola and tracked north-northwest for 3 miles and dissipated just as it moved into extreme



# National Weather Service

## Storm Data and Unusual Weather Phenomena



September 2005

Location	Date	Time Local/ Standard	Path Length (Miles)	Path Width (Yards)	Number of Persons		Estimated Damage		Character of Storm
					Killed	Injured	Property	Crops	

### MISSISSIPPI, Central

southern Sunflower county. The damage began just south of Tram Road where numerous trees were snapped or uprooted. The tornado continued to the north-northwest where it struck a mobile home off Sky Lake Road. The mobile home was flipped into the air and totally destroyed. One fatality and 2 serious injuries occurred at this location

#### **Humphreys County**

**4 SSE Belzoni to  
6 NNW Jaketown**

24	1534CST 1554CST	13	800	0	3	2M	500K	Tornado (F2)
----	--------------------	----	-----	---	---	----	------	--------------

#### **Sunflower County**

**4 ESE Inverness to  
3 NE Inverness**

24	1554CST 1558CST	5	300	0	0	500K	200K	Tornado (F1)
----	--------------------	---	-----	---	---	------	------	--------------



*Significant damage to a home in Belzoni, Humphreys county.*

This strong tornado touched down 4 miles south-southeast of Belzoni on Gunn Bayou Road, in Humphreys county. As the tornado approached Highway 12 and the City of Belzoni, it grew larger and more intense. Before it reached Belzoni, numerous trees and power lines were taken down. The tornado was most intense within an area just east of Belzoni to about 4 miles north of Belzoni. Here the heaviest and most extensive damage occurred. Several homes were significantly damaged, a modular commercial building was totally destroyed, the Belzoni school bus barn was heavily damaged, and a number of cars, school buses and farm vehicles had windows blown out. After the tornado moved through the Belzoni area, it continued to track to the north pass Jaketown, Sky Lake and then into Sunflower county. After entering Sunflower county, just east-southeast of Inverness, the tornado continued to the north-northwest for another 5 miles before dissipating. After passing the Jaketown Community, the tornado remained over rural areas and caused damage to some farm outbuildings as well as doing damage to dozens of trees and power lines. The total path length across Humphreys and Sunflower counties was 18 miles with a maximum width of 800 yards and a maximum intensity rated F2.

#### **Bolivar County**

**Shaw to  
1 NW Shaw**

24	1535CST	1	50	0	0	30K	Tornado (F0)
----	---------	---	----	---	---	-----	--------------

This weak tornado briefly touched down in Shaw and damaged a shed as well as uprooting a large tree and taking down a power pole.

#### **Sunflower County**

**3 SE Indianola to  
2 SE Indianola**

24	1540CST 1542CST	1	50	0	0	Tornado (F0)
----	--------------------	---	----	---	---	--------------

This tornado was photographed by an editor of the Indianola local newspaper as it briefly touched down in an open field for a minute





# National Weather Service

## Storm Data and Unusual Weather Phenomena



September 2005

Location	Date	Time Local/ Standard	Path Length (Miles)	Path Width (Yards)	Number of Persons		Estimated Damage		Character of Storm
					Killed	Injured	Property	Crops	

### MISSISSIPPI, Central

or two then lifted back up. No damage occurred during the brief touchdown

#### Sunflower County

9 NW Sunflower to 9.5 NW Sunflower	24	1602CST 1603CST	1	100	0	0	20K		Tornado (F1)
---------------------------------------	----	--------------------	---	-----	---	---	-----	--	--------------

#### Bolivar County

6 SE Boyle to 2 NW Boyle	24	1603CST 1615CST	9	200	0	0	400K	100K	Tornado (F1)
-----------------------------	----	--------------------	---	-----	---	---	------	------	--------------

This tornado touched down off Highway 442 near the Sunflower/Bolivar county line and tracked northwest to around the Boyle Community. As the tornado moved into Bolivar county it crossed Sawmill and Sandpit Roads. The tornado continued moving northwest toward Boyle where it dissipated just northwest of town. Along the path, numerous trees and power lines were damaged or torn down. Additionally, several mobile homes were damaged along with farm equipment. The total path length across Sunflower and Bolivar counties was 10 miles.

#### Leflore County

3 E Swiftown	24	1620CST 1621CST	1	100	0	0	40K		Tornado (F1)
--------------	----	--------------------	---	-----	---	---	-----	--	--------------

This tornado was photographed near the Swiftown Community as it briefly touched down across farm land. The photo showed an impressive looking tornado along a tree line a mile or so away. Damage was confined to many trees snapped and uprooted

#### Yazoo County

2 NNW Vaughan	24	1634CST			0	0	5K		Thunderstorm Wind (EG50)
---------------	----	---------	--	--	---	---	----	--	--------------------------

A few trees were blown down on Deasonville and Vaughn Roads

#### Sunflower County

3 SW Dockery	24	1635CST 1637CST	1	100	0	0	10K	15K	Tornado (F0)
--------------	----	--------------------	---	-----	---	---	-----	-----	--------------

#### Bolivar County

5 SE Cleveland to 1 W Merigold	24	1637CST 1651CST	12	200	0	0	800K	100K	Tornado (F2)
-----------------------------------	----	--------------------	----	-----	---	---	------	------	--------------



*Mobile home destroyed and power lines taken down, just outside Cleveland, MS in Bolivar county.*

This tornado touched down between Cleveland and Ruleville about 3 miles southeast of Dockery in Western Sunflower county. The tornado then tracked northwest into Bolivar county just east of Cleveland and then toward Merigold where it dissipated. As the tornado approached Cleveland it remained over open farm land and caused damage to trees and power lines. The tornado became more intense just east and northeast of Cleveland. Here the most significant damage occurred which was within a swath of nearly 2



# National Weather Service

## Storm Data and Unusual Weather Phenomena



September 2005

Location	Date	Time Local/ Standard	Path Length (Miles)	Path Width (Yards)	Number of Persons Killed	Number of Persons Injured	Estimated Damage Property	Estimated Damage Crops	Character of Storm
----------	------	----------------------------	---------------------------	--------------------------	--------------------------------	---------------------------------	---------------------------------	------------------------------	--------------------

### MISSISSIPPI, Central

miles that extended from the northeast outskirts of Cleveland to the Renova Community. A couple of buildings were severely damaged with one commercial storage building totally destroyed. Three mobile homes were destroyed and 5 other homes sustained heavy damage. Three sheds were destroyed and numerous large trees and power poles were taken down. A mid-sized storage tank was thrown 1/4 of a mile into a field and 3 bicycle frames were thrown 1/4 to 1/2 a mile away. The tornado weakened as it moved toward Merigold and dissipated about 1 mile west of Town off Pemble Road. The total path length across Sunflower and Bolivar counties was 13 miles with a maximum width of 200 yards and maximum rating of F2. Additionally, this tornado developed from the same parent storm which produced the Belzoni tornado.

#### Franklin County

Roxie to  
Hamburg

24	1650CST 1700CST						25K	30K	Thunderstorm Wind (EG55)
----	--------------------	--	--	--	--	--	-----	-----	--------------------------

Trees and power lines were blown down from near Roxie northward along Highway 33 to around Hamburg.

#### Leflore County

2 S Itta Bena to  
2 WSW Itta Bena

24	1656CST 1659CST	2	50	0	0		15K	Tornado (F0)
----	--------------------	---	----	---	---	--	-----	--------------

This weak tornado touched down just south of Itta Bena and tracked northwest for 2 miles before dissipating. Several trees were damaged along the path.

#### Holmes County

2 NNW Cruger to  
3 NNW Cruger

24	1700CST 1702CST	1	75	0	0		25K	Tornado (F0)
----	--------------------	---	----	---	---	--	-----	--------------

#### Leflore County

6 SE Quito to  
1 NW Quito

24	1702CST 1712CST	8	250	0	0	1.5M	700K	Tornado (F2)
----	--------------------	---	-----	---	---	------	------	--------------



*Significant damage to Quito's cotton gin, in Leflore county.*

This tornado touched down just north-northwest of Cruger, in Holmes county, on the extreme southern end of Mosquito Lake and tracked northwest for 9 miles across southern Leflore county. As the tornado tracked northwest toward the Phillipstown Community, hundreds of trees were snapped and uprooted across Mosquito Lake. Between Phillipstown and Quito was where the most significant damage occurred. Two homes and a church were significantly damaged and hunting lodge was totally destroyed with its contents and debris scattered half a mile along the path. A steel framed cotton gin was nearly destroyed in Quito with nearly all of the roof gone and many walls taken down. A seed warehouse at this location was also significantly damaged. Additionally, hundreds of trees were damaged along with several bails of picked cotton that were scattered across a few fields. The tornado dissipated just to the northwest of Quito.



# National Weather Service

## Storm Data and Unusual Weather Phenomena



September 2005

Location	Date	Time Local/ Standard	Path Length (Miles)	Path Width (Yards)	Number of Persons Killed    Injured		Estimated Damage Property    Crops		Character of Storm
----------	------	----------------------------	---------------------------	--------------------------	---	--	--	--	--------------------

### MISSISSIPPI, Central

#### Leflore County

<b>1 SE Itta Bena to Itta Bena</b>	24	1717CST 1719CST	1	75	0	0	200K	<b>Tornado (F1)</b>
--	----	--------------------	---	----	---	---	------	---------------------

This tornado touched down on the southeast side of Itta Bena and tracked into town for about a mile. Numerous trees were damaged a large limbs scattered along the path through town. One home sustained roof damage and the roof of the High School was damaged. All damage was minor. This tornado developed from the same storm which produced the Quito tornado.

#### Holmes County

<b>3 SW Acona</b>	24	1725CST 1726CST	1	50	0	0	10K	<b>Tornado (F0)</b>
-------------------	----	--------------------	---	----	---	---	-----	---------------------

This brief tornado damaged a number of large limbs and power lines when it touched down just southwest of the Acona Community.

#### Carroll County

<b>1 SE Holly Grove to Holly Grove</b>	24	1740CST 1742CST	1	50	0	0	20K	<b>Tornado (F0)</b>
--	----	--------------------	---	----	---	---	-----	---------------------

#### Leflore County

<b>6.5 S Greenwood to 4.5 S Greenwood</b>	24	1742CST 1745CST	2	75	0	0	30K	<b>Tornado (F0)</b>
---	----	--------------------	---	----	---	---	-----	---------------------

Spotters observed this tornado near the Holly Grove Community moving northwest. The tornado remained over bottom land and only damaged trees. Total path length was 3 miles.

#### Franklin County

<b>2 SW Meadville</b>	24	1755CST			0	0	5K	<b>Thunderstorm Wind (EG50)</b>
-----------------------	----	---------	--	--	---	---	----	---------------------------------

A few trees were blown down.

#### Warren County

<b>8 WSW Redwood</b>	24	1755CST 1757CST			0	0	5K	<b>Thunderstorm Wind (EG55)</b>
----------------------	----	--------------------	--	--	---	---	----	---------------------------------

#### Issaquena County

<b>12 SSW Valley Park to 8 SSW Valley Park</b>	24	1757CST 1803CST			0	0	10K	<b>Thunderstorm Wind (EG55)</b>
--	----	--------------------	--	--	---	---	-----	---------------------------------

A swath of minor wind damage occurred west of Redwood over a portion of Warren and Issaquena counties. A few trees were blown down and numerous limbs were down. The tree damage occurred across a portion of Highway 465.

#### Franklin County

<b>3 SW Meadville to 1 SW Meadville</b>	24	1755CST 1757CST	2	75	0	0	15K	<b>Tornado (F0)</b>
---	----	--------------------	---	----	---	---	-----	---------------------

This tornado briefly touched down southwest of Meadville and uprooted a few trees and twisted limbs off several more.

#### Newton County

<b>3 NE Newton to 3 NNE Newton</b>	24	1845CST 1846CST	0.8	100	0	0	1M	<b>Tornado (F2)</b>
--	----	--------------------	-----	-----	---	---	----	---------------------

This strong tornado touched down briefly on the northeast side of Newton causing significant damage to the Lazy Boy factory building. A large part of the factory roof was torn off and large pieces of metal were thrown 1/3 of a mile to the north-northwest. The iron girders within the building were bent at about 10 degrees with some failure of the roof near the center. Insulation debris was scattered all about with some pieces found 4.5 miles away along the northeast shores of Turkey Creek Lake. In fact, a 4 foot piece of metal roofing was found at the base of the dam, 4 miles north-northwest of the Lazy Boy plant. Additionally, a 1/2 ton pickup, parked next to the building, was lifted and slammed against an iron ladder. A T-post that was laying on the ground was picked up and hurled as a missile about 100 feet. It was then impaled into a utility pole and bent at a 90 degree angle. The tops of trees about 300 feet away were sheared off half way up.

#### Issaquena County

<b>Valley Park</b>	24	1905CST			0	0		<b>Thunderstorm Wind (EG50)</b>
--------------------	----	---------	--	--	---	---	--	---------------------------------

Numerous large limbs were blown down along with a couple of trees





# National Weather Service

## Storm Data and Unusual Weather Phenomena



September 2005

Location	Date	Time Local/ Standard	Path Length (Miles)	Path Width (Yards)	Number of Persons		Estimated Damage		Character of Storm
					Killed	Injured	Property	Crops	

**MISSISSIPPI, Central**



*Mobile home rolled over near Fayette.*

This strong tornado touched down a few miles west-southwest of Fayette and tracked north-northeast for 10 miles. Extensive tree damage occurred along the path with hundreds of trees snapped and uprooted. A couple of mobile homes were damaged and a house had part of its roof taken off.

**Adams County**

4 NE Cranfield

25	0223CST								
			1	75	0	0	2K	500K	Thunderstorm Wind (EG50)

A few trees were blown down.

**Jefferson County**

4 N Fayette to  
4.5 NNE Fayette

25	0237CST 0238CST								
			1	75	0	0	15K	500K	Tornado (F1)

This tornado briefly touched down north of Fayette and snapped the tops off a number of trees

**Jefferson County**

Red Lick to  
5 NE Red Lick

25	0249CST 0254CST								
			5	800	0	1	300K	500K	Tornado (F2)

**Claiborne County**

4 SW Pattison to  
2 SW Pattison

25	0254CST 0257CST								
			2	800	0	0	20K	100K	Tornado (F2)



# National Weather Service

## Storm Data and Unusual Weather Phenomena



September 2005

Location	Date	Time Local/ Standard	Path Length (Miles)	Path Width (Yards)	Number of Persons		Estimated Damage		Character of Storm
					Killed	Injured	Property	Crops	

**MISSISSIPPI, Central**



*Home with the roof blown off and a few walls blown down, occurred in Jefferson county.*

This strong tornado touched down in the Red Lick Community, of Jefferson county, and tracked northeast into Claiborne county. Extensive tree damage occurred along the path with hundreds of trees uprooted and snapped. One mobile home was destroyed and a framed house had most of the roof torn off and an outside wall blown out. One injury occurred as the mobile home was rolled over and destroyed.

<b>Adams County</b> Countywide	25	0300CST 0600CST			0	0	50K		Flash Flood
<b>Claiborne County</b> Countywide	25	0400CST 1100CST			0	0	70K		Flash Flood
<b>Jefferson County</b> Countywide	25	0400CST 1100CST			0	0	1M	100K	Flash Flood
<b>Attala County</b> Countywide	25	0830CST 1200CST			0	0	50K		Flash Flood
<b>Hinds County</b> West Portion	25	0830CST 1200CST			0	0	800K	100K	Flash Flood
<b>Holmes County</b> South Portion	25	0830CST 1200CST			0	0	300K	100K	Flash Flood
<b>Madison County</b> West Portion	25	0830CST 1200CST			0	0	400K	300K	Flash Flood
<b>Warren County</b> Countywide	25	0830CST 1200CST			0	0	2M	700K	Flash Flood
<b>Yazoo County</b> Countywide	25	0830CST 1200CST			0	0	5M	1M	Flash Flood



# National Weather Service

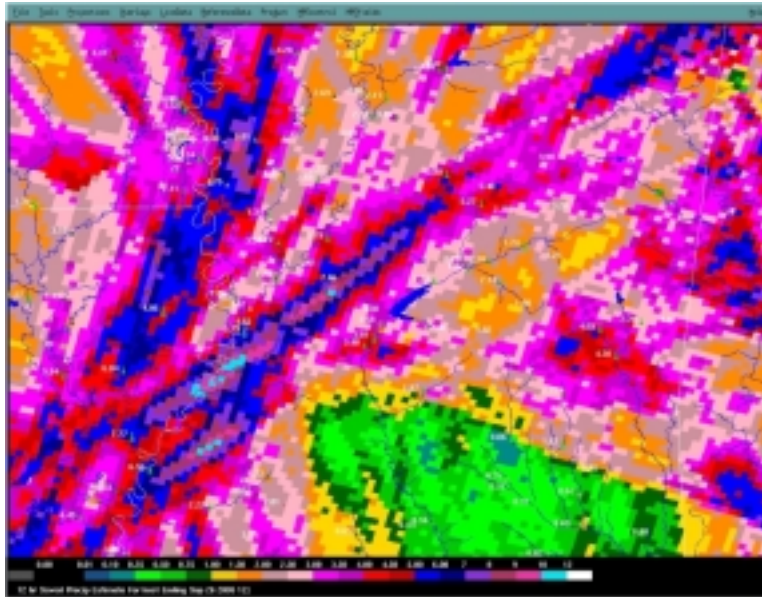
## Storm Data and Unusual Weather Phenomena



September 2005

Location	Date	Time Local/ Standard	Path Length (Miles)	Path Width (Yards)	Number of Persons Killed	Number of Persons Injured	Estimated Damage Property	Estimated Damage Crops	Character of Storm
----------	------	----------------------------	---------------------------	--------------------------	--------------------------------	---------------------------------	---------------------------------	------------------------------	--------------------

### MISSISSIPPI, Central



*Area rainfall during Hurricane Rita.*

Early Sunday morning several bands of thunderstorms developed across Southwest, West-central and Central Mississippi. These bands repeatedly moved over the same locations for a few hours and produced locally heavy rainfall. Most locations received 3 to 5 inches of rain in a few hour period. The heaviest rains fell within a corridor that was generally aligned along the Big Black River. This corridor received nearly 7 to 10 inches of rain over a few hour period. The worst flooding occurred in Warren and Yazoo counties. Here, many roads were washed out or flooded by several feet of water. Many homes in these areas had some amount of water inside them. The rest of the affected areas had flooded roads, creeks out of their banks and standing water in areas that normally do not flood.

<b>Adams County</b> 3 SE Natchez	25	0320CST			0	0	80K	20K	<b>Thunderstorm Wind (EG55)</b> Several trees were blown down around the southeast side of Natchez. Some trees were blown down on homes and vehicles.
<b>Hinds County</b> 2 NW Utica	25	0334CST			0	0	10K		<b>Thunderstorm Wind (EG58)</b> A few trees were blown down and a barn damaged.
<b>Washington County</b> Greenville	25	0340CST 0600CST			0	0	80K		<b>Flash Flood</b> Locally heavy rain caused significant street flooding in and around Greenville. Over a 10 hour period, 5 to 7 inches of rain fell across Washington county.
<b>Jefferson County</b> 5 SE Fayette to 6 ENE Fayette	25	0344CST 0349CST	4	50	0	0	40K		<b>Tornado (F0)</b> This tornado touched down southeast of Fayette and took down a few power lines and damaged several trees. One mobile home sustained minor damage.
<b>Bolivar County</b> Cleveland	25	0410CST			0	0			<b>Thunderstorm Wind (MG56)</b>
<b>Warren County</b> Vicksburg to	25	0612CST			0	0	110K	50K	<b>Thunderstorm Wind (EG60)</b>



# National Weather Service

## Storm Data and Unusual Weather Phenomena



September 2005

Location	Date	Time Local/ Standard	Path Length (Miles)	Path Width (Yards)	Number of Persons Killed	Number of Persons Injured	Estimated Damage Property	Estimated Damage Crops	Character of Storm
----------	------	----------------------------	---------------------------	--------------------------	--------------------------------	---------------------------------	---------------------------------	------------------------------	--------------------

### MISSISSIPPI, Central

<b>4 SE Vicksburg</b>		<b>0620CST</b>							
<p>Numerous trees and power lines were blown down across the City and across southern parts of the City. One mobile home was destroyed by a fallen tree just off Halls Ferry Road near Tanglewood Drive.</p>									
<b>Warren County</b>									
<b>10 SE Vicksburg</b>	25	<b>0615CST</b>			0	0	3K	15K	<b>Thunderstorm Wind (EG58)</b>
<p>Numerous trees and many large limbs were blown down along Highway 27</p>									
<b>Madison County</b>									
<b>8 W Flora to 8 WNW Flora</b>	25	<b>0658CST 0702CST</b>			0	0		10K	<b>Thunderstorm Wind (EG55)</b>
<p>Several trees were blown down near the Big Black River, along the Madison/Yazoo county line.</p>									
<b>Yazoo County</b>									
<b>8 SE Sartatia to Bentonla</b>	25	<b>0700CST 0706CST</b>			0	0		10K	<b>Thunderstorm Wind (EG55)</b>
<p>Several areas of trees blown 8 miles southeast of Sartatia, near the Big Black River, toward Bentonla</p>									
<b>Claiborne County</b>									
<b>5 WNW Port Gibson</b>	25	<b>0702CST 0703CST</b>	0.7	50	0	0	70K	20K	<b>Tornado (F1)</b>
<p>This tornado briefly touched down and damaged a roof and a porch to a well built home. Additionally, a number of trees were downed and damaged.</p>									
<b>Claiborne County</b>									
<b>3 N Grand Gulf to 9 NNE Grand Gulf</b>	25	<b>0740CST 0749CST</b>			0	0	70K	50K	<b>Thunderstorm Wind (EG58)</b>
<p>Numerous trees and power lines were blown down across the northern part of the county.</p>									
<b>Hinds County</b>									
<b>Brownsville</b>	25	<b>0820CST</b>			0	0			<b>Thunderstorm Wind (EG50)</b>
<p>A couple of trees down.</p>									
<b>Warren County</b>									
<b>6 SE Vicksburg to 6 ESE Vicksburg</b>	25	<b>0821CST 0823CST</b>	1.5	100	0	0	10K	15K	<b>Tornado (F0)</b>
<p>This weak tornado briefly touched down off Halls Ferry, Timberlane and Sweetgum Roads. Several trees were snapped and uprooted along with a few power lines taken down.</p>									
<b>Attala County</b>									
<b>Mc Cool</b>	25	<b>0827CST</b>			0	0			<b>Thunderstorm Wind (EG50)</b>
<p>A couple of trees down.</p>									
<b>Claiborne County</b>									
<b>2 S Port Gibson</b>	25	<b>0948CST</b>			0	0	40K		<b>Thunderstorm Wind (EG50)</b>
<p>A couple of trees were blown down. One tree was down on a house just south of Port Gibson.</p>									
<b>Neshoba County</b>									
<b>6 SSW Philadelphia</b>	25	<b>1005CST</b>			0	0		10K	<b>Thunderstorm Wind (EG55)</b>
<p>Several trees were blown down.</p>									
<b>Lowndes County</b>									
<b>2 N Columbus Afb to 4 N Columbus Afb</b>	25	<b>1055CST 1059CST</b>			0	0			<b>Funnel Cloud</b>
<p></p>									
<b>Warren County</b>									
<b>Redwood</b>	25	<b>1126CST 1127CST</b>	0.5	50	0	0	30K		<b>Tornado (F0)</b>





# National Weather Service

## Storm Data and Unusual Weather Phenomena



September 2005

Location	Date	Time Local/ Standard	Path Length (Miles)	Path Width (Yards)	Number of Persons		Estimated Damage		Character of Storm
					Killed	Injured	Property	Crops	

### MISSISSIPPI, Central



*Awning blown down at a gas station in Redwood.*

This weak tornado touched down briefly in Redwood and crossed US Highway 61. A man drove his truck through the tornado as it crossed the Highway. The tornado destroyed a metal overhang, knocked over a fence and snapped a few small trees and limb.

#### **Warren County**

**Vicksburg to  
3 NE Vicksburg**

25	1155CST 1200CST									<b>Thunderstorm Wind (EG55)</b>
----	--------------------	--	--	--	--	--	--	--	--	---------------------------------

Many trees, along with a few power lines, were blown down around Vicksburg and just north of town. A few of these trees were down on homes causing damage.

#### **Attala County**

**6 SE Kosciusko to  
7 ESE Kosciusko**

25	1255CST 1259CST	2	75	0	0	50K	15K		<b>Tornado (F0)</b>
----	--------------------	---	----	---	---	-----	-----	--	---------------------

This tornado touched down about 6 miles southeast of Kosciusko and tracked northeast for about 2 miles. This tornado rolled over a camper trailer, downed some power lines and uprooted or snapped a dozen or so trees.

#### **Madison County**

**6 SE Canton to  
7 ESE Canton**

25	1305CST 1310CST	3	75	0	0	40K			<b>Tornado (F0)</b>
----	--------------------	---	----	---	---	-----	--	--	---------------------

This weak tornado touched down just off the Natchez Trace and moved northeast for 3 miles causing minor tree damage across Sharon Road, Pine Grove Road and Barnes Road. Several trees were uprooted with a few having limbs snapped.

#### **Smith County**

**3 W Raleigh to  
2 W Raleigh**

25	1325CST 1327CST	1	50	0	0	25K			<b>Tornado (F0)</b>
----	--------------------	---	----	---	---	-----	--	--	---------------------

This weak tornado briefly touched down just west of Raleigh and moved east-northeast for about a mile. A man watched the tornado damage his barn and knock down a few trees as it moved to the east-northeast.

#### **Oktibbeha County**

**Starkville to  
2 NE Starkville**

25	1338CST 1345CST	3.5	75	0	7	2M			<b>Tornado (F1)</b>
----	--------------------	-----	----	---	---	----	--	--	---------------------



# National Weather Service

## Storm Data and Unusual Weather Phenomena



September 2005

Location	Date	Time Local/ Standard	Path Length (Miles)	Path Width (Yards)	Number of Persons Killed	Number of Persons Injured	Estimated Damage Property	Estimated Damage Crops	Character of Storm
----------	------	----------------------------	---------------------------	--------------------------	--------------------------------	---------------------------------	---------------------------------	------------------------------	--------------------

**MISSISSIPPI, Central**



*Destroyed mobile homes just northeast of Starkville.*

This tornado touched down on the southeast side of Starkville, just southwest of the MSU Campus, in the Sherwood Forest subdivision and tracked northeast for 3.5 miles through the MSU Campus then dissipated at Highway 82.

The Sherwood Forest subdivision had several trees uprooted and about 5 homes with shingle damage. The tornado then moved across an open field toward the MSU Campus. The MSU Seed Technology Building sustained major damage to most of the metal/tin structures. A RV was rolled over at this location. The rest of the campus sustained broken windows, downed trees and roof damage to several buildings. The tornado exited MSU Campus and continued northeast. For the last mile, numerous homes sustained minor roof damage and broken windows. Just before the tornado dissipated the University Mobile Home park was severely hit. Eleven mobile homes were flipped over and destroyed along with many others sustaining minor damage. Seven injuries occurred at the mobile home park, all in the destroyed mobile homes. The tornado dissipated shortly there after just before reaching Highway 82.

**Leake County**

Carthage Leak Co	25	1347CST	1.5	100	0	0	200K	20K	Tornado (F1)
1.5 NE Carthage Leak Co		1350CST							



# National Weather Service

## Storm Data and Unusual Weather Phenomena



September 2005

Location	Date	Time Local/ Standard	Path Length (Miles)	Path Width (Yards)	Number of Persons		Estimated Damage		Character of Storm
					Killed	Injured	Property	Crops	

### MISSISSIPPI, Central



*F1 Tornado as it moved near the Leake County Airport.*

This tornado touched down just on the southwest side of the Carthage county airport. Three small aircraft were destroyed as one was flipped over and another thrown nearly 1/4 mile into a wooded area. The airport hanger sustained minor damage as the door was blown in. Numerous trees were damaged and uprooted. One home on Jordan Road had windows blown out and several trees down on it. Additionally, one mobile home on Goshen Road sustained minor damage.

#### Smith County

5 N Sylvarena	25	1350CST			0	0			Funnel Cloud
---------------	----	---------	--	--	---	---	--	--	--------------

#### Jasper County

4 W Montrose to 3 WNW Montrose	25	1401CST 1403CST	1	50	0	0			Tornado (F0)
-----------------------------------	----	--------------------	---	----	---	---	--	--	--------------

This tornado was witnessed by spotters touching down just west of Montrose and moving across an open field for a few minutes. No damage was reported other than some minor damage to some trees.

#### Lowndes County

1 S Golden Triangle Rgn	25	1418CST			0	0	10K		Thunderstorm Wind (EG50)
-------------------------	----	---------	--	--	---	---	-----	--	--------------------------

Some metal awning was torn off a storage building just south of the airport along with a few large limbs broken off trees

#### Hinds County

3 NE Byram to 4 NE Byram	25	1428CST 1430CST	1	75	0	0	20K		Tornado (F0)
-----------------------------	----	--------------------	---	----	---	---	-----	--	--------------

This tornado quickly spun up off Elton Road, between the Railroad tracks and the Pearl River, and damaged several trees before dissipating.

#### Choctaw County

4 W Reform	25	1450CST			0	0	15K		Thunderstorm Wind (EG55)
------------	----	---------	--	--	---	---	-----	--	--------------------------

A few trees and power lines were blown down.

#### Rankin County

5 SSE Brandon to 5 SE Brandon	25	1458CST 1503CST	2	75	0	0	400K		Tornado (F1)
----------------------------------	----	--------------------	---	----	---	---	------	--	--------------

This tornado touched down near Hemphill Drive and moved northeast dissipating just north of Old Lake Road. As the tornado moved through a residential area, it destroyed a few dozen trees and several power lines. The most substantial damage occurred near



# National Weather Service

## Storm Data and Unusual Weather Phenomena



September 2005

Location	Date	Time Local/ Standard	Path Length (Miles)	Path Width (Yards)	Number of Persons		Estimated Damage		Character of Storm
					Killed	Injured	Property	Crops	

### MISSISSIPPI, Central

Old Lake Road where several trees fell on a home and caused significant roof damage.

#### Oktibbeha County

6 SE Maben

25	1514CST 1516CST	1	50	0	0	20K	Tornado (F0)
----	--------------------	---	----	---	---	-----	--------------

This weak tornado touched down off Thompson Road and Tobe Henry Road, near the power lines, and moved northeast for about 1 mile. Several trees were uprooted along with a few large limbs broken off some trees.

#### Lauderdale County

3 N Marion to  
4 NNE Marion

25	1521CST 1525CST	1.8	150	0	0	250K	80K	Tornado (F1)
----	--------------------	-----	-----	---	---	------	-----	--------------



*Mobile home flipped over just north of Marion, off Hamm Rd.*

This tornado touched down just west of Van Zyverden Road and moved northeast for almost 2 miles and passed near Northeast High School. The tornado dissipated less than 1 mile south of the intersection of Ponta Hills Road and Lizella Road. A farm shed was destroyed along with numerous downed trees, some of which caused damage to homes. One mobile home was flipped over on Hamm Road along with several power lines taken down along the path

#### Webster County

3 NNE Eupora to  
3 E Eupora

25	1527CST 1529CST			0	0	15K	Thunderstorm Wind (EG55)
----	--------------------	--	--	---	---	-----	--------------------------

Several trees were blown down just outside of Eupora and along Highway 82 just east of town.

#### Rankin County

6 N Puckett

25	1607CST 1610CST	1	50	0	0	10K	25K	Tornado (F0)
----	--------------------	---	----	---	---	-----	-----	--------------

This weak tornado touched down in the Rufus Community slightly east of Highway 43 and moved east-northeast for almost a mile. This tornado moved across a small lake and dissipated just to the northeast of the lake. A few dozen trees were damaged and snapped with some tin torn off a storage building.

#### Noxubee County

2 WNW Brooksville to  
2 NW Brooksville

25	1624CST 1626CST	1	50	0	0			Tornado (F0)
----	--------------------	---	----	---	---	--	--	--------------

Spotters witnessed a tornado briefly touching down and moving across a field just northwest of Brooksville.



# National Weather Service

## Storm Data and Unusual Weather Phenomena



September 2005

Location	Date	Time Local/ Standard	Path Length (Miles)	Path Width (Yards)	Number of Persons		Estimated Damage		Character of Storm
					Killed	Injured	Property	Crops	

**MISSISSIPPI, Central**

**Lauderdale County**

<b>4 SW Meridian Arpt to 2 S Meridian Arpt</b>	<b>25</b>	<b>1747CST 1754CST</b>			<b>0</b>	<b>0</b>			<b>Funnel Cloud</b>
--	-----------	----------------------------	--	--	----------	----------	--	--	---------------------

Observer at Key Field witnessed a funnel cloud and recorded the event in the ASOS observation