

# **Truck Stop Electrification**

**And Air Quality Conformity**

**Presented by Bob Dickinson  
South East Texas Regional  
Planning Commission**

**Air Innovation Conference  
August 11, 2004**



# Background

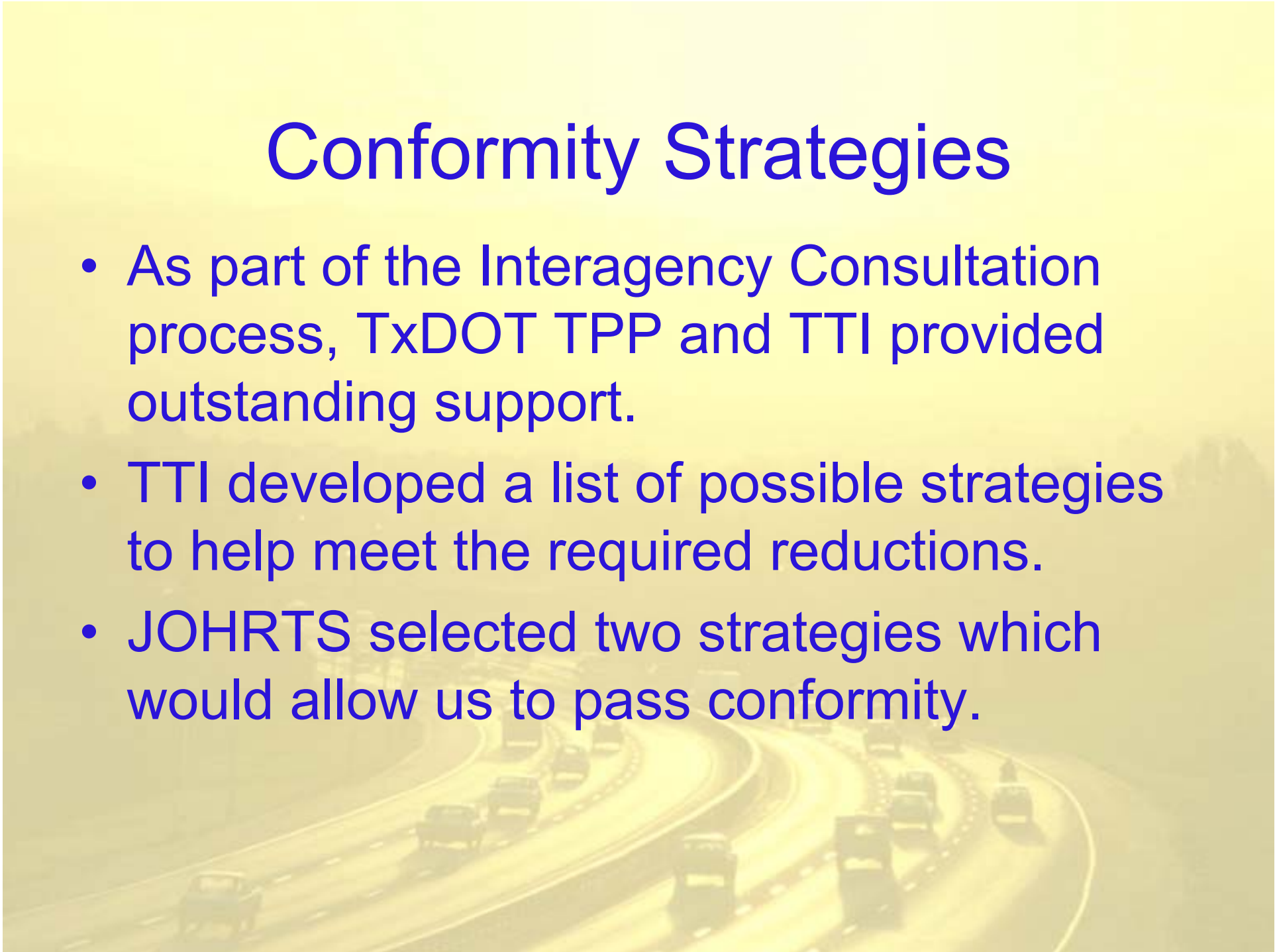
- JOHRTS had a SIP based on INTRASTATE Transport.
- This aligned our attainment date to 2007.
- EPA was sued for approving this SIP.
- In December 2002, the Court ruled against EPA.
- JOHRTS went into a Conformity Lapse in November 2003.

- With no approved NOx MVEB, JOHRTS had to use the Build/No Build Test for NOx.
- The results showed that we passed the VOC test, but needed reductions to pass the NOx test.

Network Year	NOx Reductions
2005	6 pounds
2015	424 pounds
2025	229 pounds

# Conformity Strategies

- As part of the Interagency Consultation process, TxDOT TPP and TTI provided outstanding support.
- TTI developed a list of possible strategies to help meet the required reductions.
- JOHRTS selected two strategies which would allow us to pass conformity.



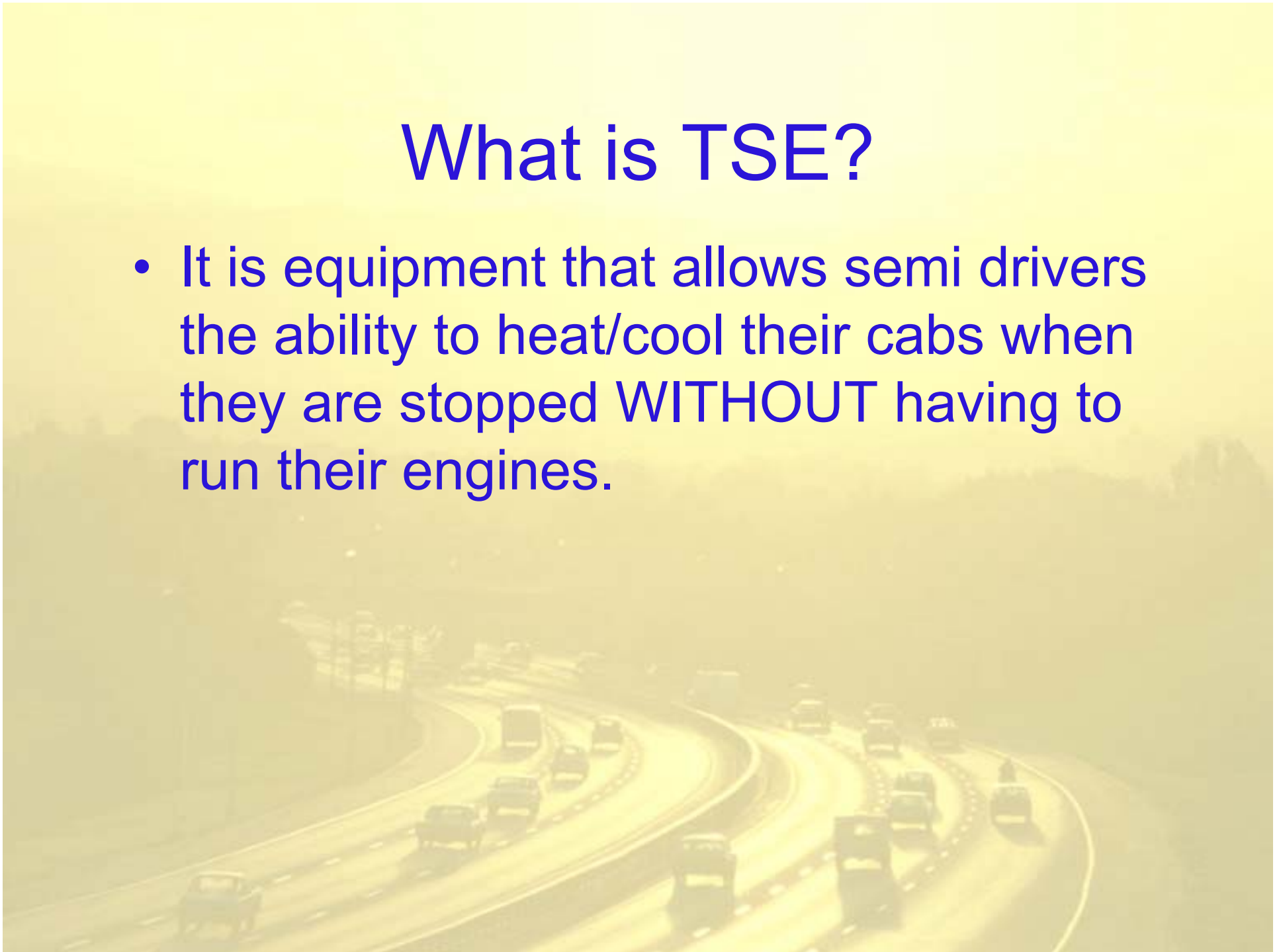
# Truck Stop Electrification (TSE)

- TSE is one of the strategies we choose.
- El Paso MPO is implementing TSE, but not to meet conformity.
- Other MPOs through the US are working with TSE as a CMAQ project.



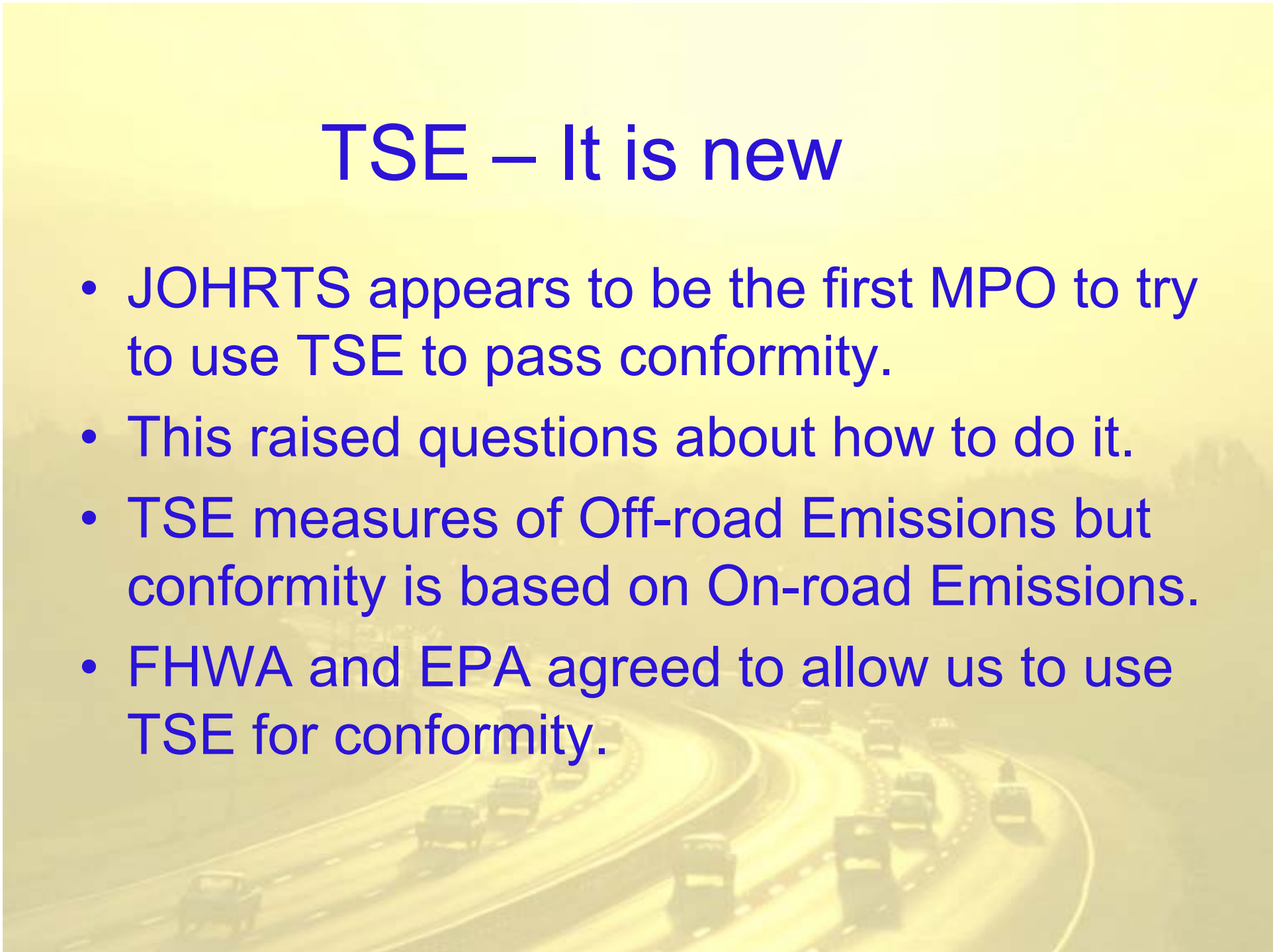
# What is TSE?

- It is equipment that allows semi drivers the ability to heat/cool their cabs when they are stopped **WITHOUT** having to run their engines.



# TSE – It is new

- JOHRTS appears to be the first MPO to try to use TSE to pass conformity.
- This raised questions about how to do it.
- TSE measures of Off-road Emissions but conformity is based on On-road Emissions.
- FHWA and EPA agreed to allow us to use TSE for conformity.





## TSE – More challenges

- How do you calculate the savings?
- Mobile6 versus other data
- EPA draft guidance
- EPA final guidance
- EPA is funding an advanced study

## TSE – How do you build it?

- JOHRTS plans to use CMAQ funds
- Public – Private Partnerships.



# TSE Contract

- Must define who owns the equipment if the builder defaults.
- Must define how profits will be handled.
- Additional contractual issues.

## TSE – Can it be done?

- Yes, it is feasible in the JOHRTS area.



# IdleAire Service Delivery Module

## SECURITY LOCK

Rotate the external locking handle to engage the security locks

## CARD READER

Slide a fleet card, major credit card, prepaid value card, or member card to activate services

## TOUCH SCREEN COMPUTER

Easy-to-read, step-by-step instructions for system operation, thermostat controls, and Internet access

## HELP

Press this Go button for on-screen help in using the IdleAire system. In addition, reach our 24/7 customer care center by dialing \*611 from your in-cab phone or toll free 877-738-7624 from any phone

## GO BUTTONS

Press for easy, one touch access to main and future services

## USB PORTS

Plug in a keyboard and mouse to surf the Web. Connect other USB devices for enhanced functionality

## 120V AC

Plug in your own appliances inside the cab, or block/fuel heaters and shore power connections outside

## INTERNET

High-speed Internet access is available. Ethernet interface required; additional service charges apply

## TELEPHONE

Plug in your phone to make and receive in-cab calls just like a payphone

## HEAT/AIR

Provides filtered multi-directional air flow throughout the cab

## TELEVISION

Basic satellite cable TV included. Up-graded services available for additional fee

Front View



Tuesday, May 22, 2001  
3:36:37 AM EDT



## Menu

### Current Visit

Elapsed Time

**49:36**

[View Current Bill](#)

### Thermostat

Set Point

**80°F**

27°C

Mode

**Heat**

[Set Thermostat](#)

### High-Speed Internet

Rate:  
\$3.00/visit

State

**Off**

[Purchase](#)

### Payment

Current Payment Method

**MEMBER CARD**

2000005047901793

[Fund Transfer](#)

[Buy Adapter](#)



### Television



[Basic Service](#)

[Member Channels](#)



### Movie On Demand



Your message in front of Drivers

[Messages](#)

### NATIONAL ALERT

07/01/03 FBI Seeks  
Suspected Terrorist  
Click or touch for  
more information



[Alerts](#)

### Training







## **For more information contact**

**Bob Dickinson, Director  
Transportation & Environmental  
Resources Division  
409-899-8444 ext. 251  
[bdickinson@setrpc.org](mailto:bdickinson@setrpc.org)**

**South East Texas Regional Planning Commission  
2210 Eastex Freeway  
Beaumont, TX 77703**