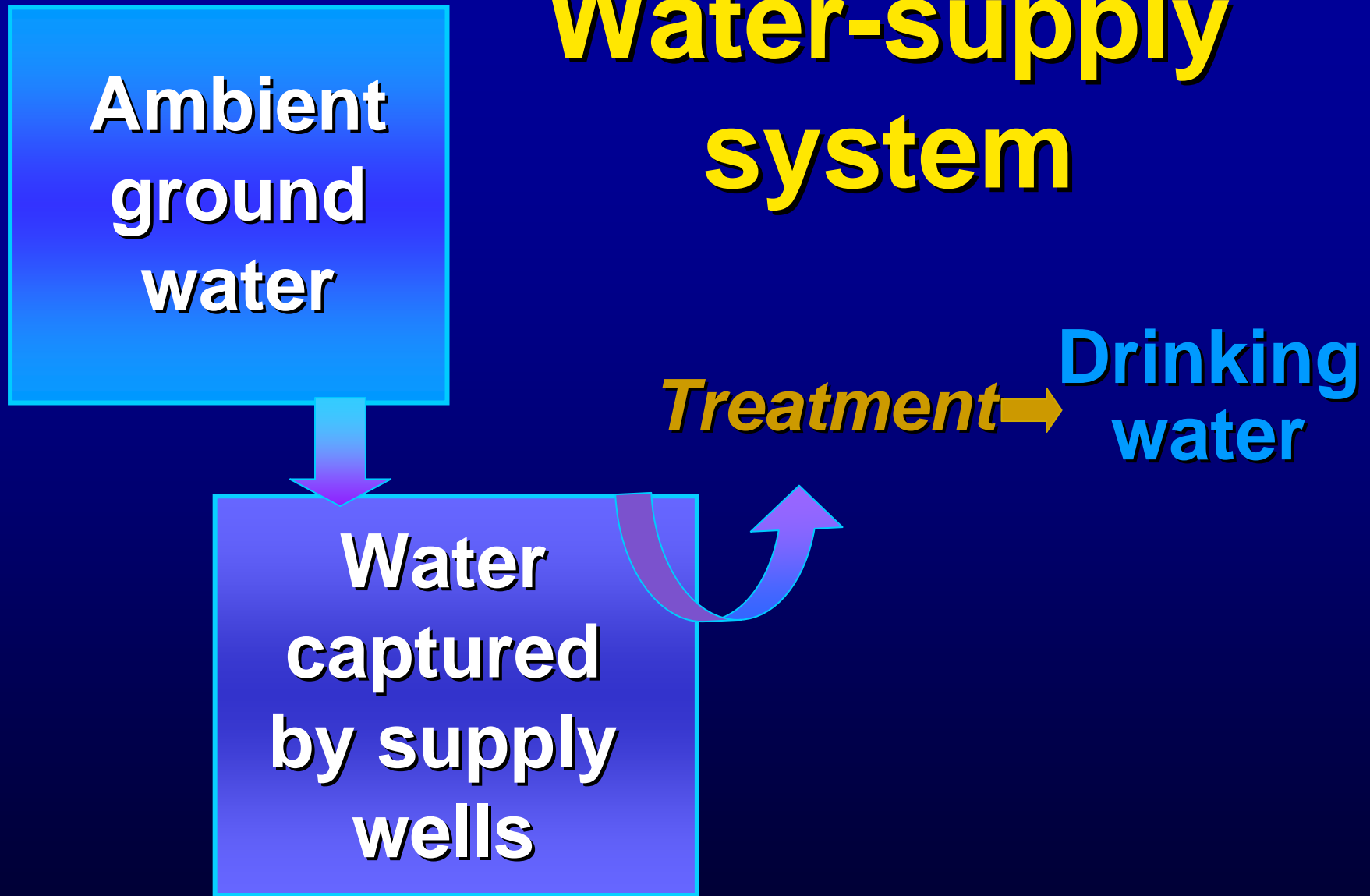
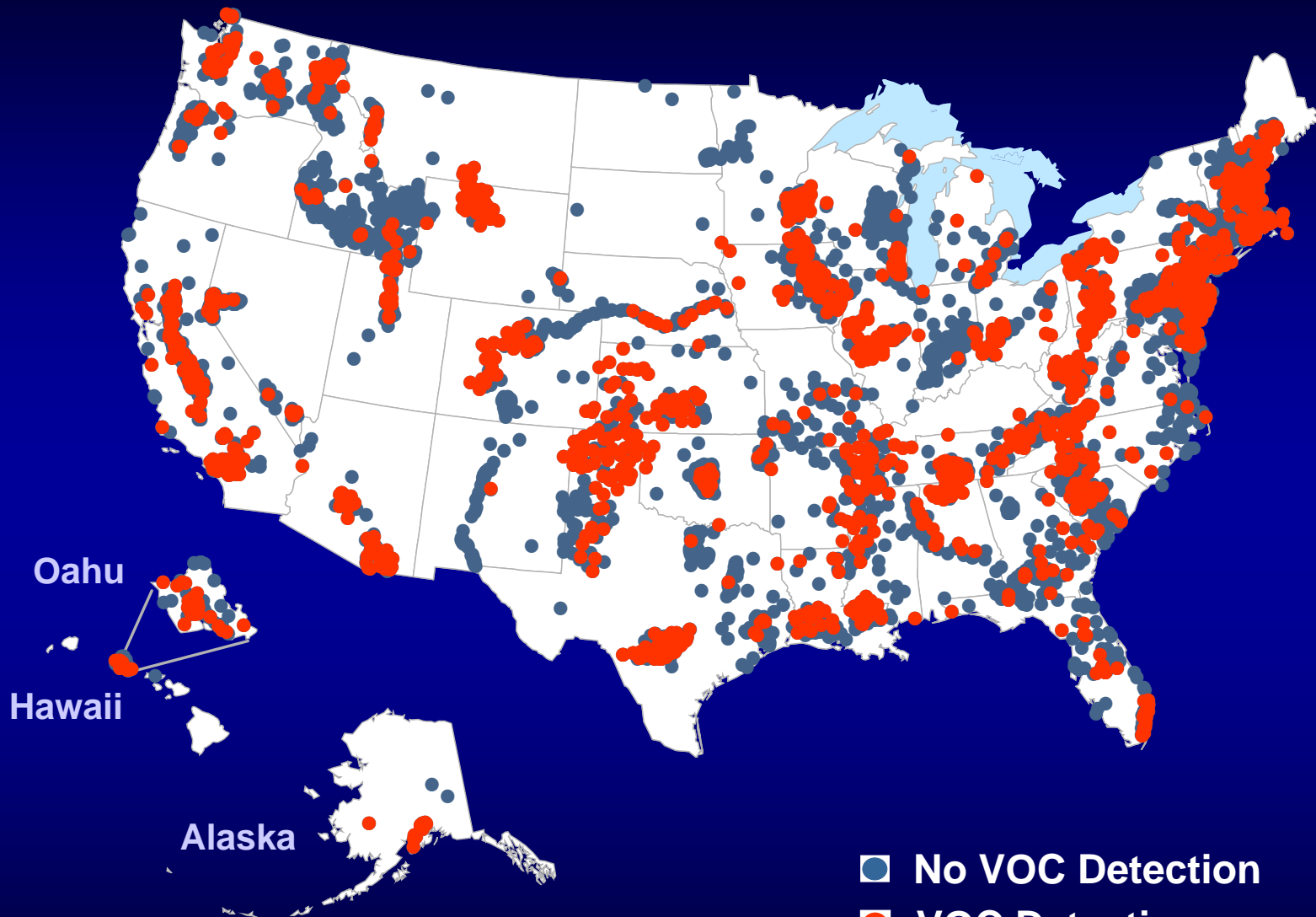


**Are VOCs present in the  
Nation's ground water?**

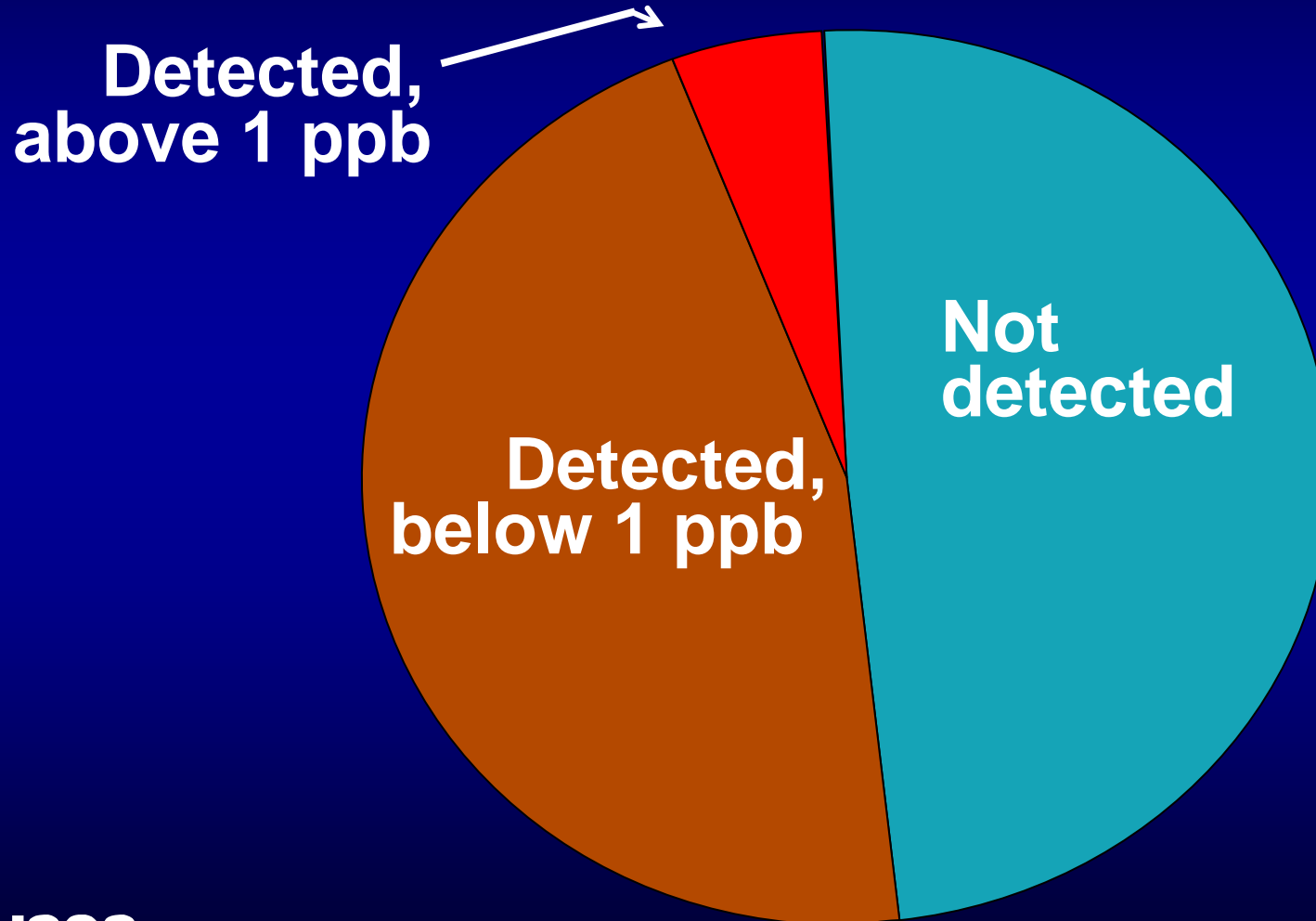
**If so, are the VOC  
concentrations of concern?**

# Water-supply system

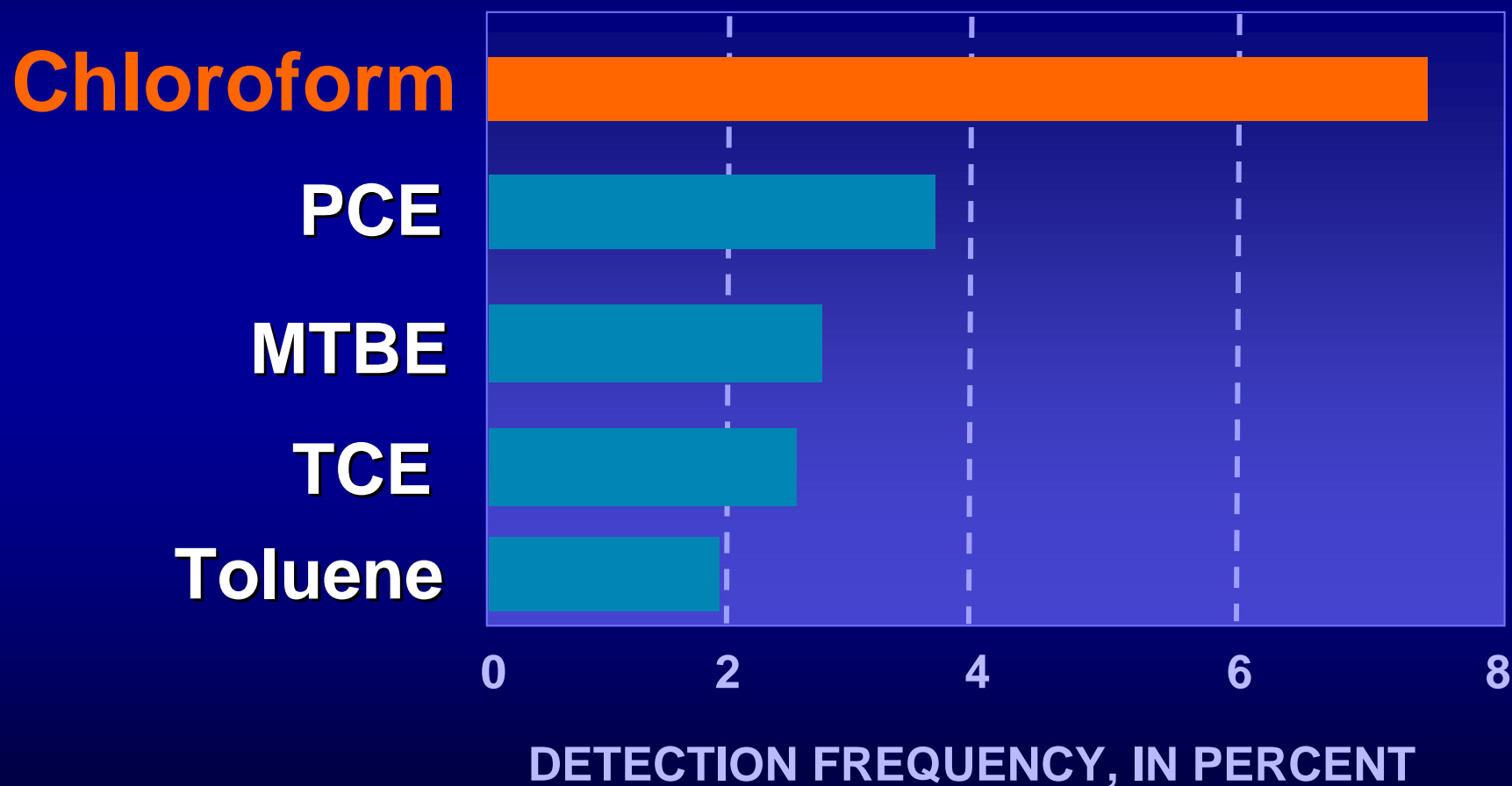




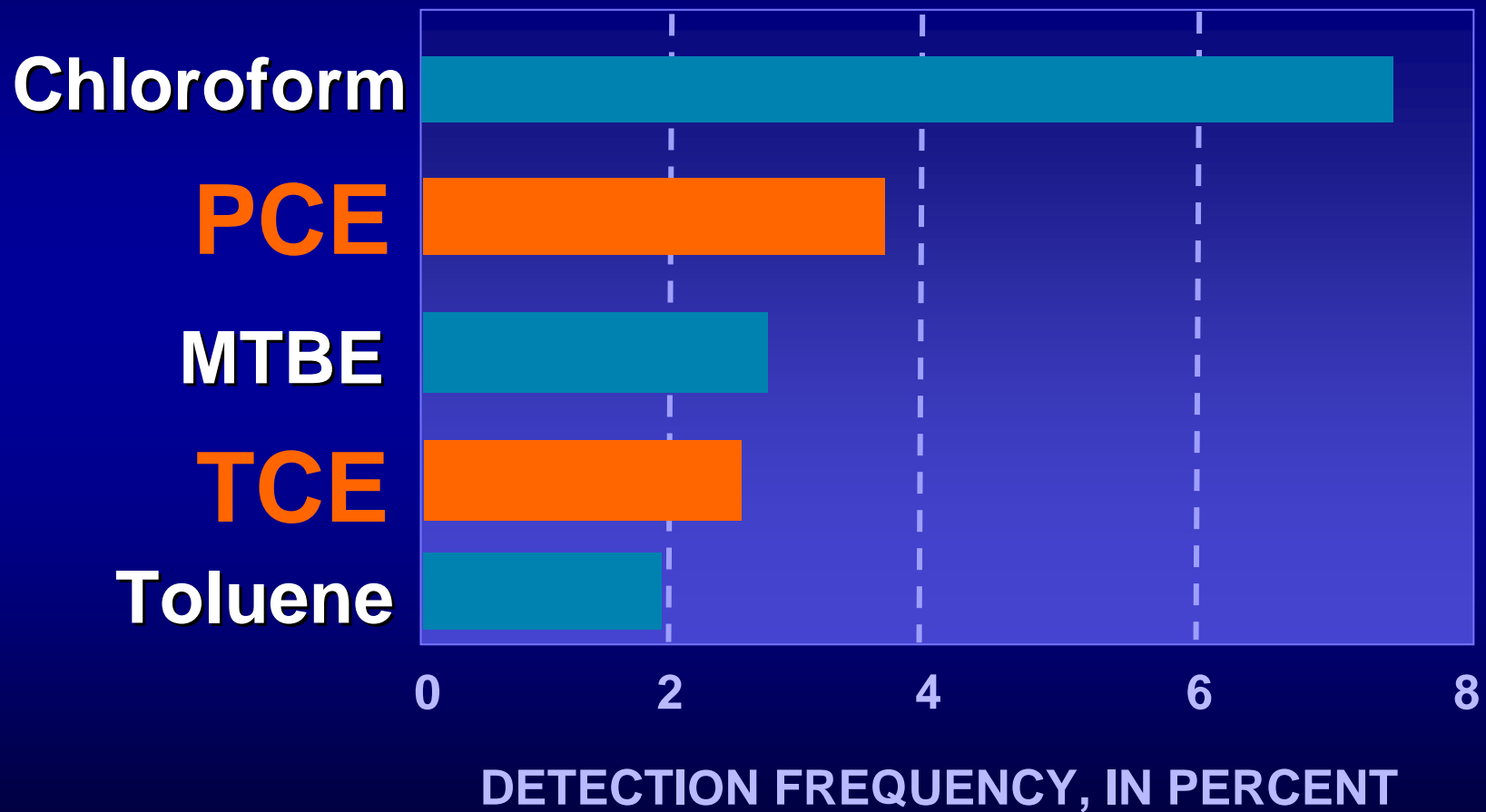
# VOC concentrations in aquifers



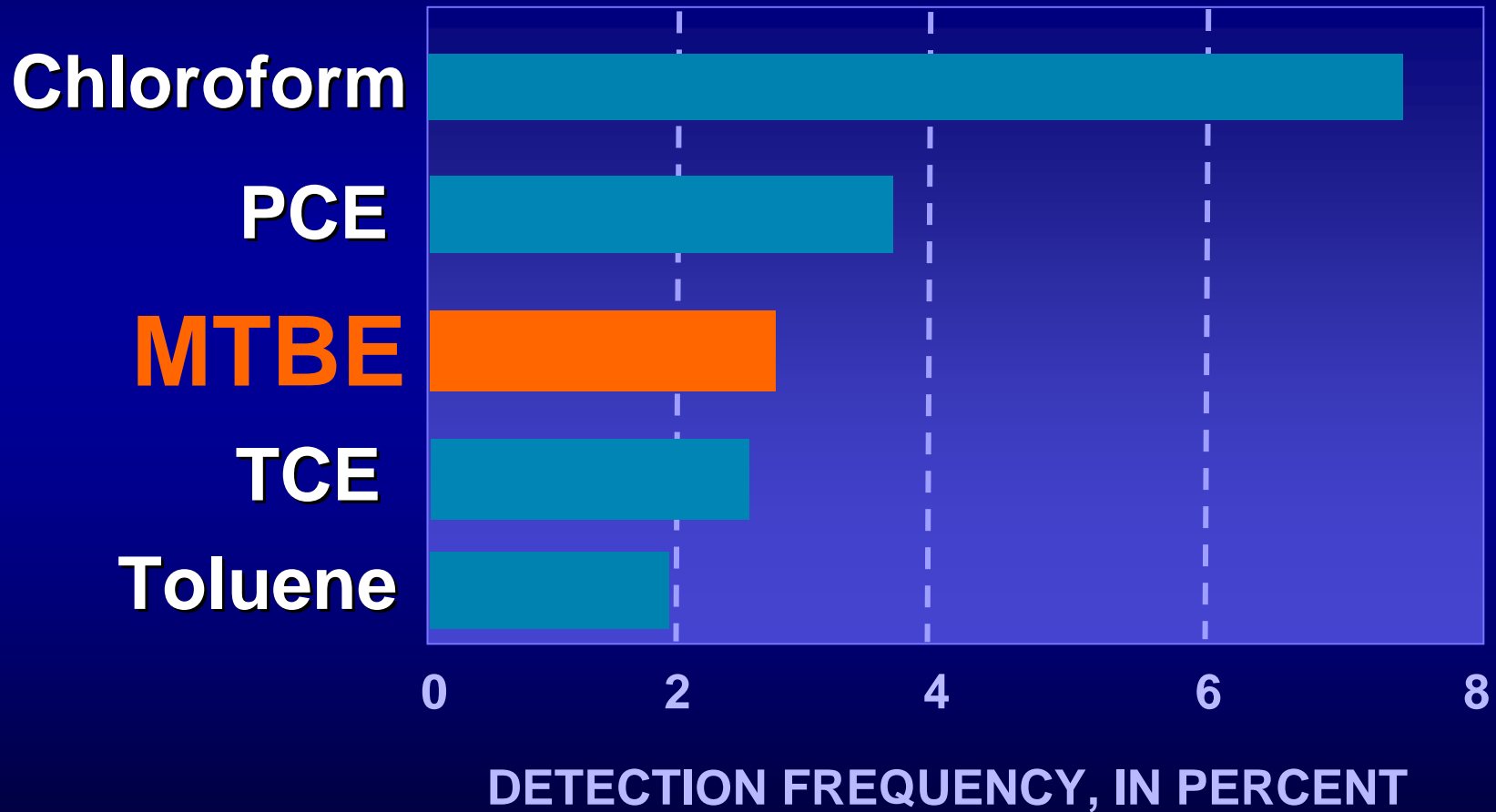
# Chloroform was the most frequently detected VOC in aquifer samples



# PCE and TCE were also frequently detected in aquifer samples

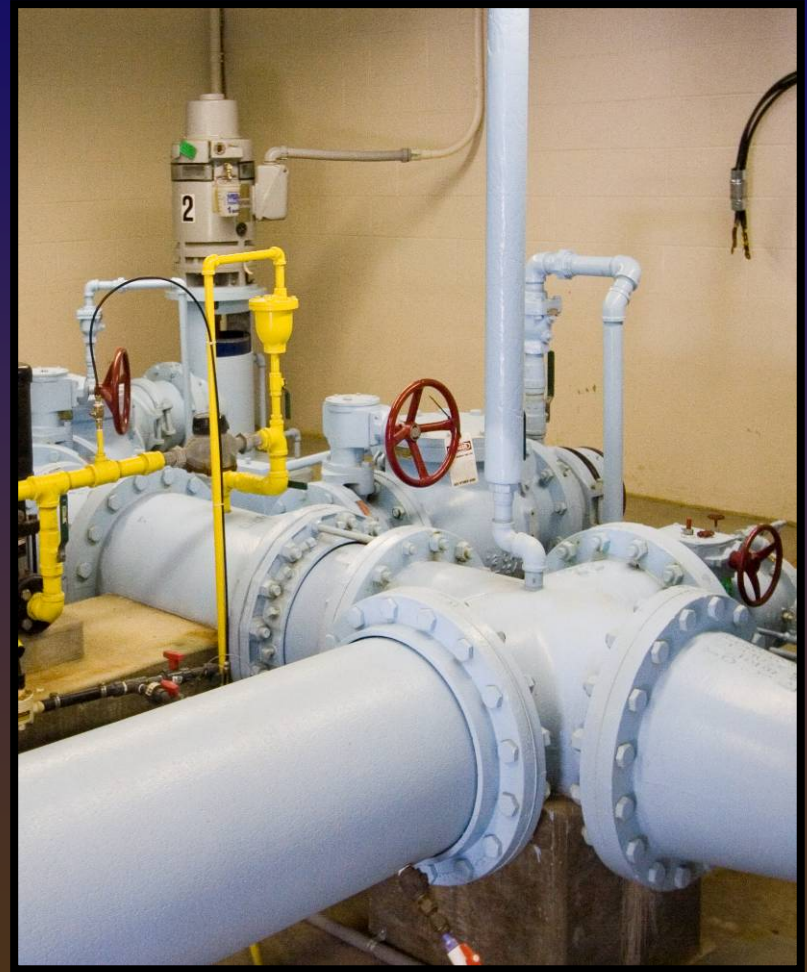


# MTBE was the third most frequently detected VOC in aquifer samples

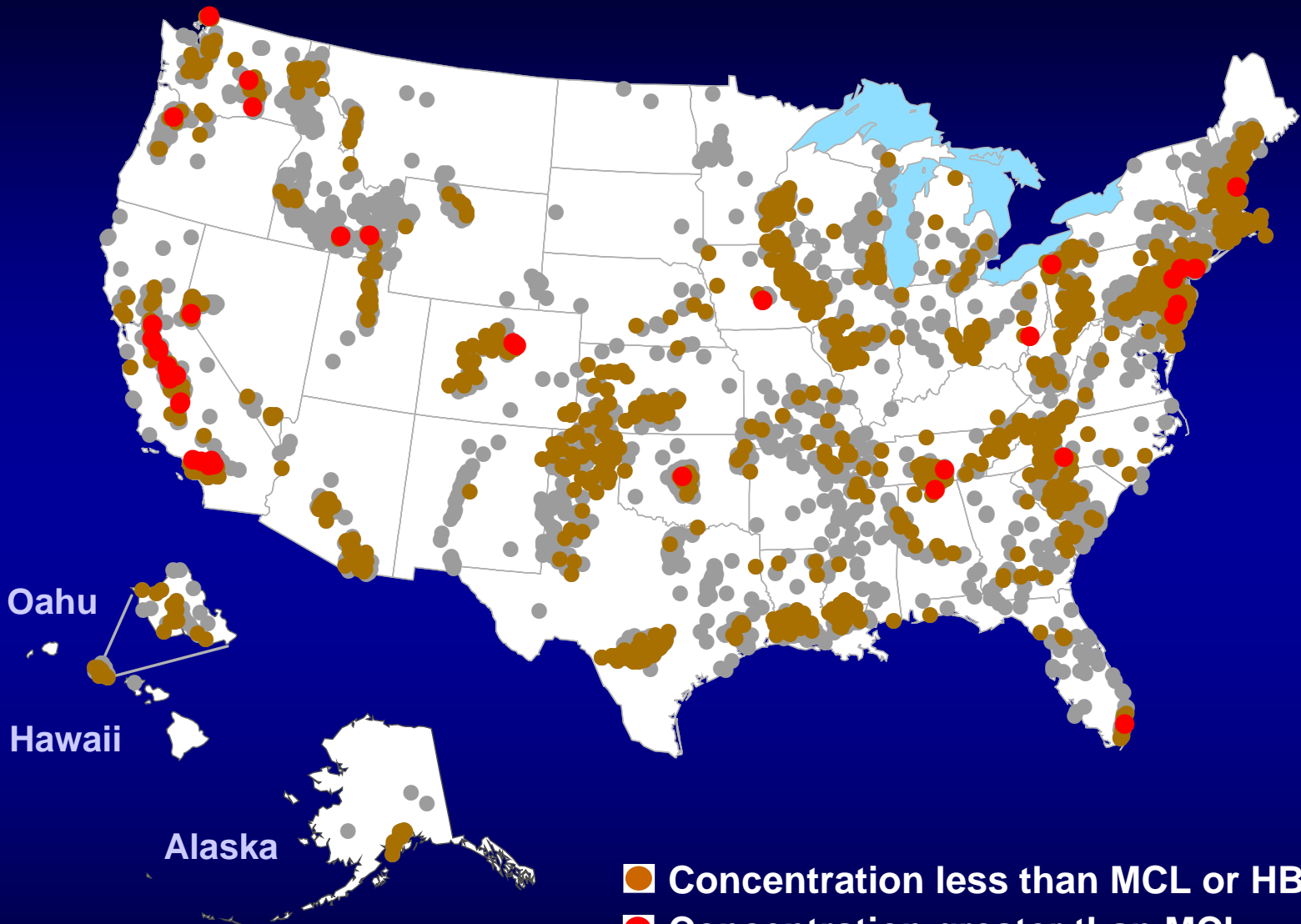




# Domestic wells and Public wells



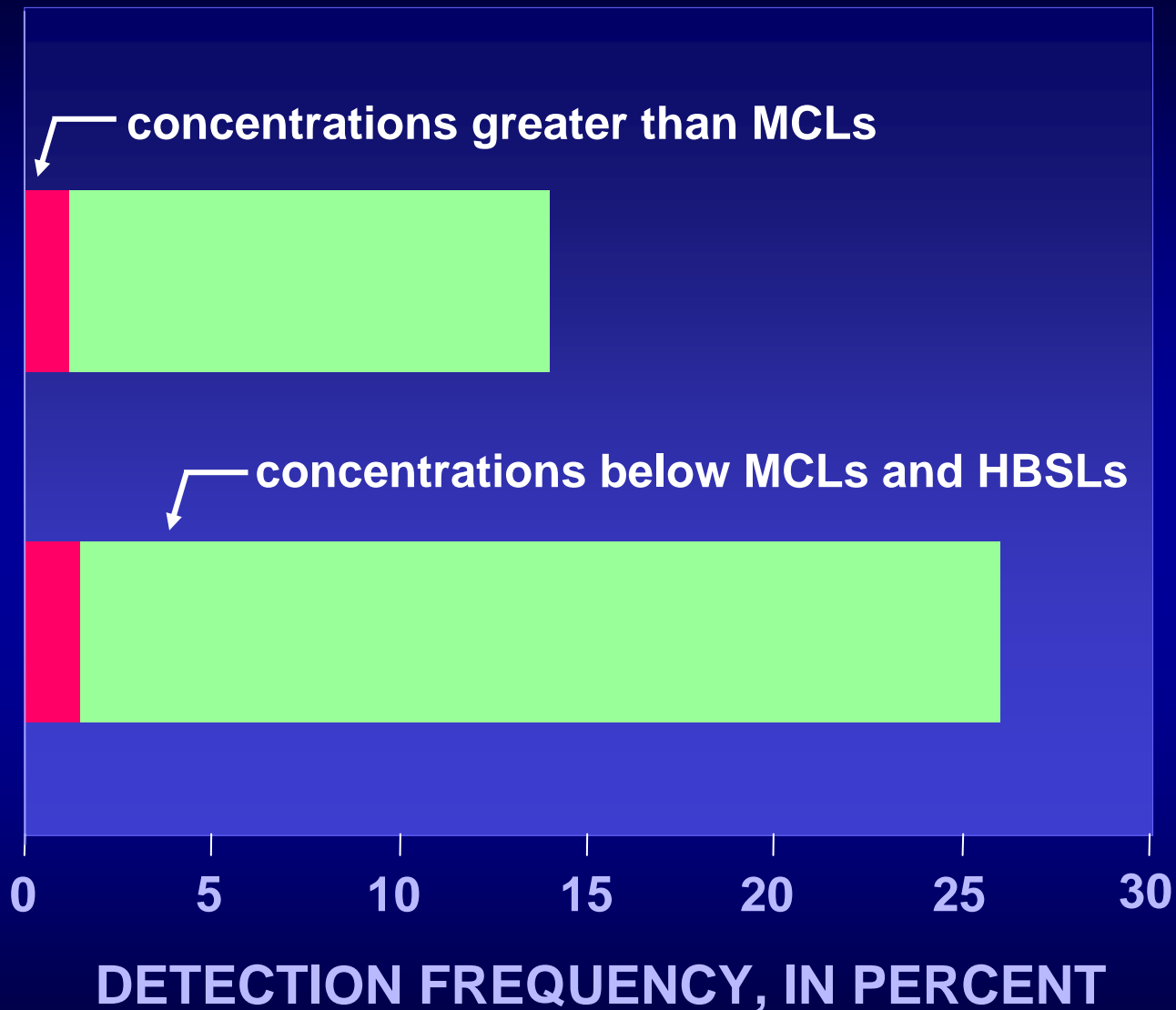




- Concentration less than MCL or HBSL
- Concentration greater than MCL
- No VOC Detection

**Domestic wells**

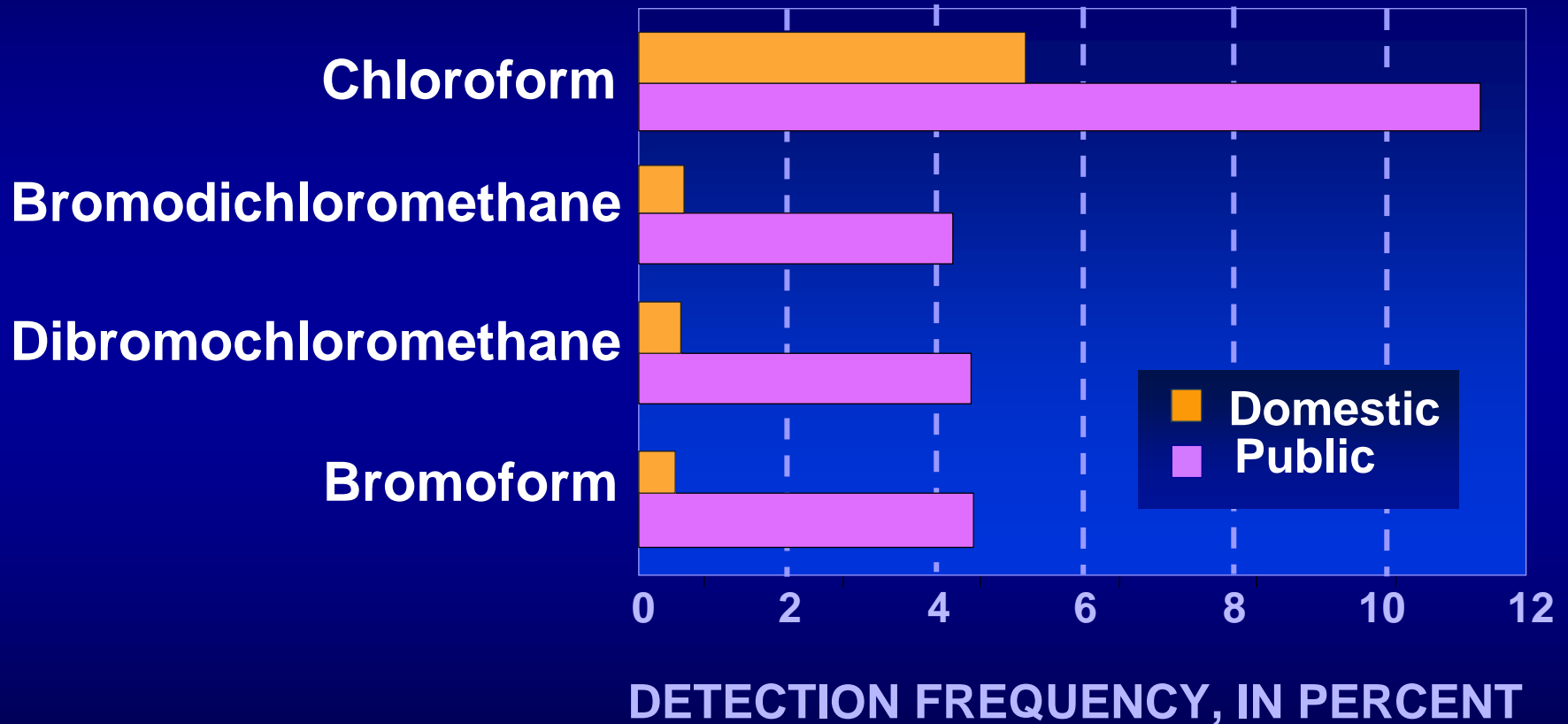
**Public wells**



# VOCs with concentrations greater than MCLs

Group	Compound	Well type	
		Domestic	Public
Fumigants	DBCP	X	
	1,2-Dichloropropane	X	
	EDB	X	
Solvents	TCE	X	X
	PCE	X	X
	Methylene chloride		X
Chemical production	1,1-Dichloroethene	X	X
	Vinyl chloride		X

# THMs in domestic and public wells



# Summary

- **Widespread occurrence of VOCs**
- **Concentrations seldom of potential concern**
- **Large number of vulnerable aquifers**