

Snowbasin Land Exchange

USDA Forest Service
Intermountain Region
Wasatch-Cache National Forest
May 2000



Table of Contents

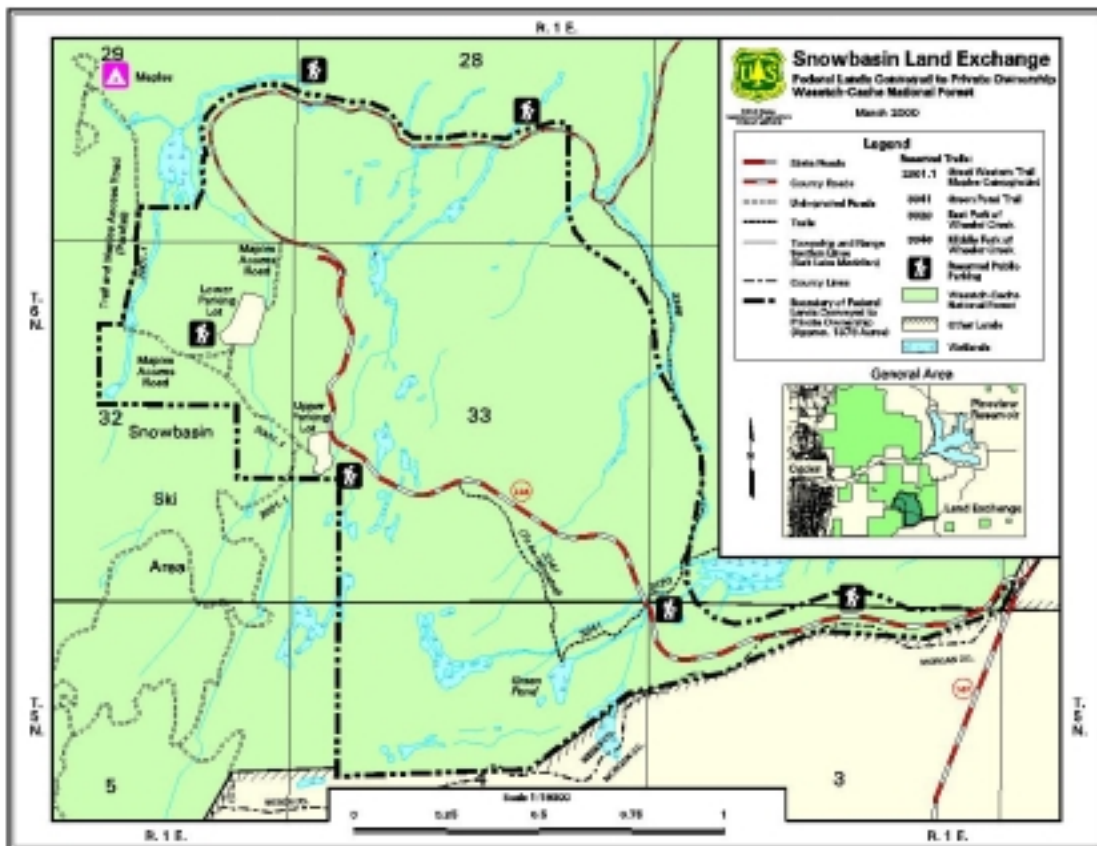
Snowbasin Land Exchange Act	3
Federal Lands	3
Public Resources Conveyed	4
<i>Detail map of Snow Basin parcel</i>	5
<i>Non-Federal Lands map</i>	6
Non Federal Lands — Weber County	
Weber County Summary	7
<i>Detail map of Weber County parcels</i>	8
Wheeler Creek	9
Taylor Canyon	9
Goodale	9
Warm Water Canyon	10
Sardine Canyon	10
Ogden Canyon	10
Lightening Ridge	11
North Fork Ogden River	12
Non Federal Lands — Cache County	
Cache County Summary	13
Franklin Basin	14
<i>Detail map of Cache County parcels</i>	15
Logan Dry Canyon	16
Providence Canyon	16
Non Federal Lands — Box Elder County	
Box Elder County Summary	17
<i>Detail map of Cache County parcels</i>	18
Devils Gate	19
Dock Flat	19
Non Federal Lands — Rich County	
Rich County Summary	20
Jebo Creek	21
Summaries	
Non-Federal Lands Summary	22
County Summary table	22
Federal & Non-Federal Comparison table	22
What's Next?	23

Snowbasin Land Exchange Act

- ❖ Signed into law November 12, 1996
- ❖ Authorized and directed by Congress
- ❖ 1,320 (+/-) acres to be exchanged
 - Nondiscretionary
 - NEPA sufficient
 - No administrative or judicial review
 - Value for value
 - Lands may be added, subtracted or substituted

Federal Lands

- ❖ 1,377 acres (2 counties)
- ❖ Road, trail and public parking reservations
- ❖ MOU on trail planning and development
- ❖ DOT easement to UDOT on new highway
- ❖ Easement to Weber County on existing Highway 226



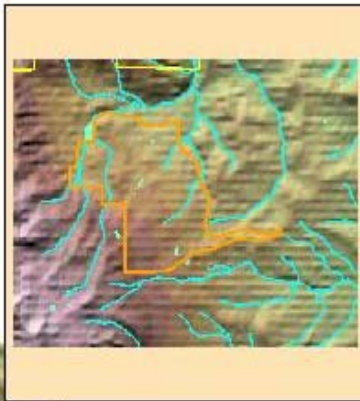


Snowbasin Land Exchange Act Wasatch-Cache National Forest Detail of Parcel for Conveyance to Private Ownership Snow Basin

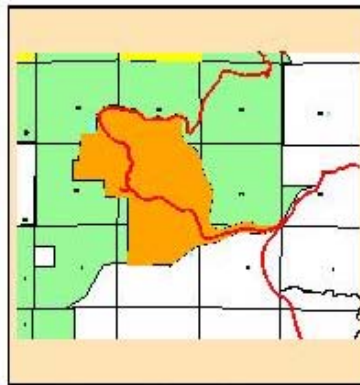
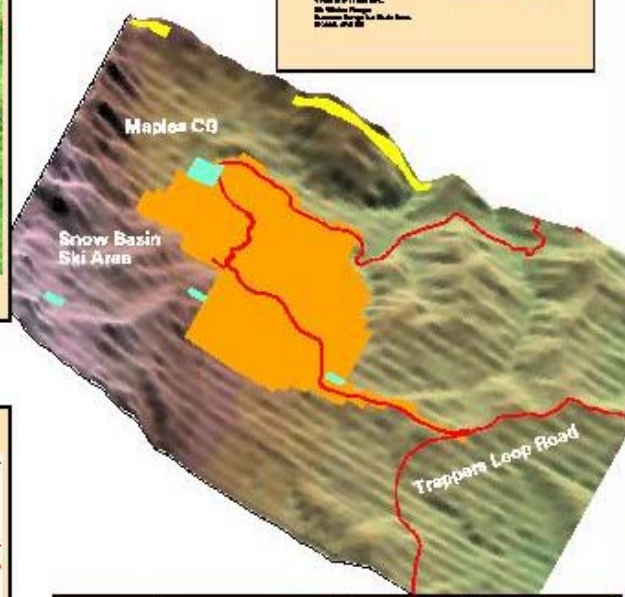
General Information
 National Overlay: 7313 Administrative Boundary: 0041
 Total Parcel Acreage: 1976 Total Miles Live and
 Irrigated Acreage: 12.0
 WMR #1146161
 16 Milea Parcel
 Section 36/37/38/39/40/41/42/43
 Range 24/30E



Important Big Game Habitats

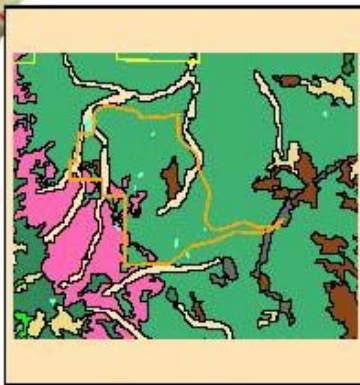


Riparian and Water Courses



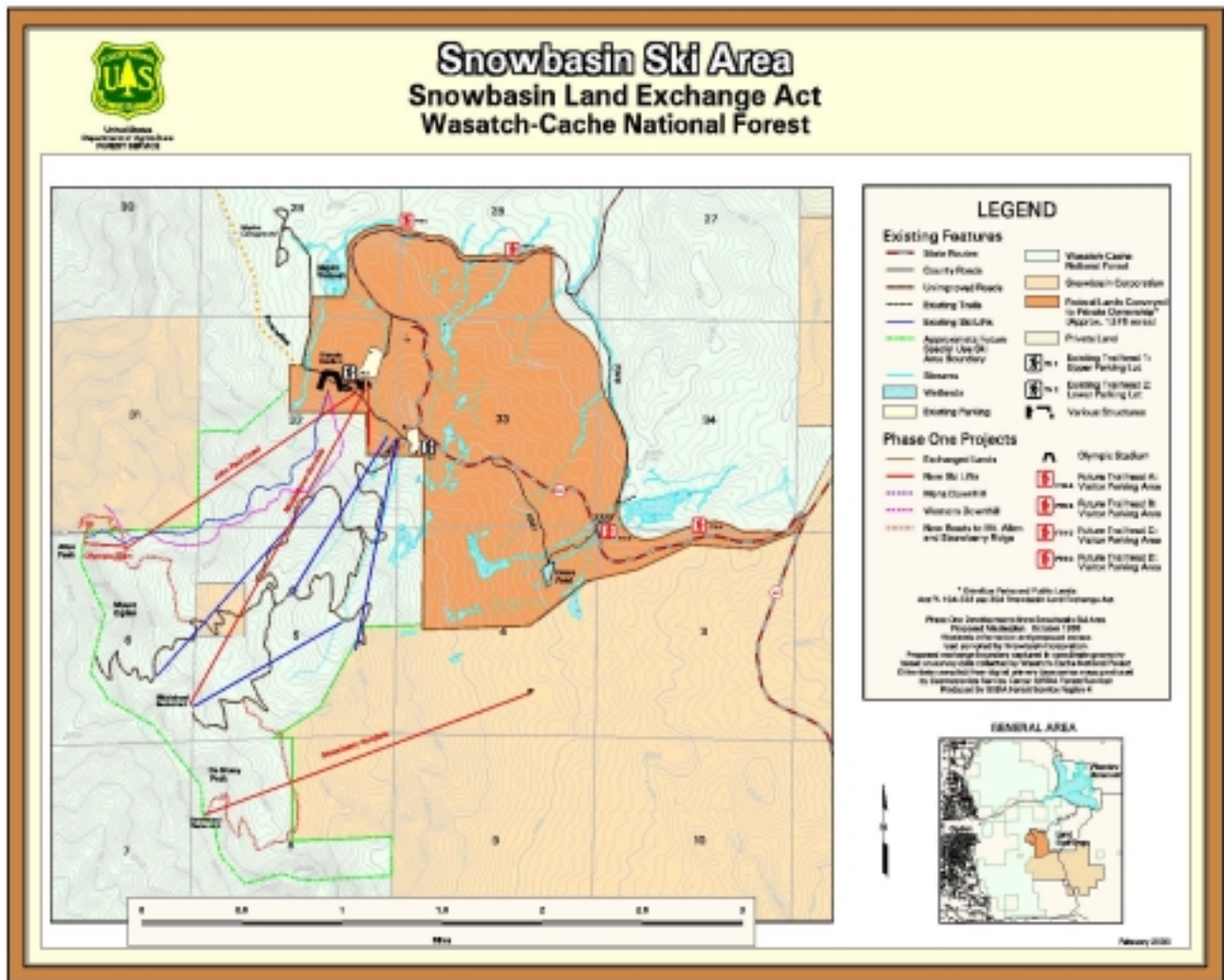
Ownership and Access

Legend	
Wildlife Habitat	Vegetation
Wild Year 2/3 Zone Buffer	SPRUE 1P
Wetland Buffer 50'	Lodgepole Pine
Wetland Buffer 100'	MOUNTAIN
Wetland Buffer 150'	Pinyon Juniper
Wetland Buffer 200'	Mt. Baldy Birch
Ownership and Access	Pines
National Forest Lands	Cold - Maple
BLM Lands	Mountain Birch
Private Lands	Sagebrush
Power - Rightway	GRASSLAND
Contiguous BLM	Upland
	Sagebrush - tall
	Riparian
	Land in Proposed
	Blue Pined Loam
	Proposed for Acquisition
	Private Lands Conveyed to Private Ownership
	Water Courses
	Live and In-use Water Courses
	Labeled and Flowing



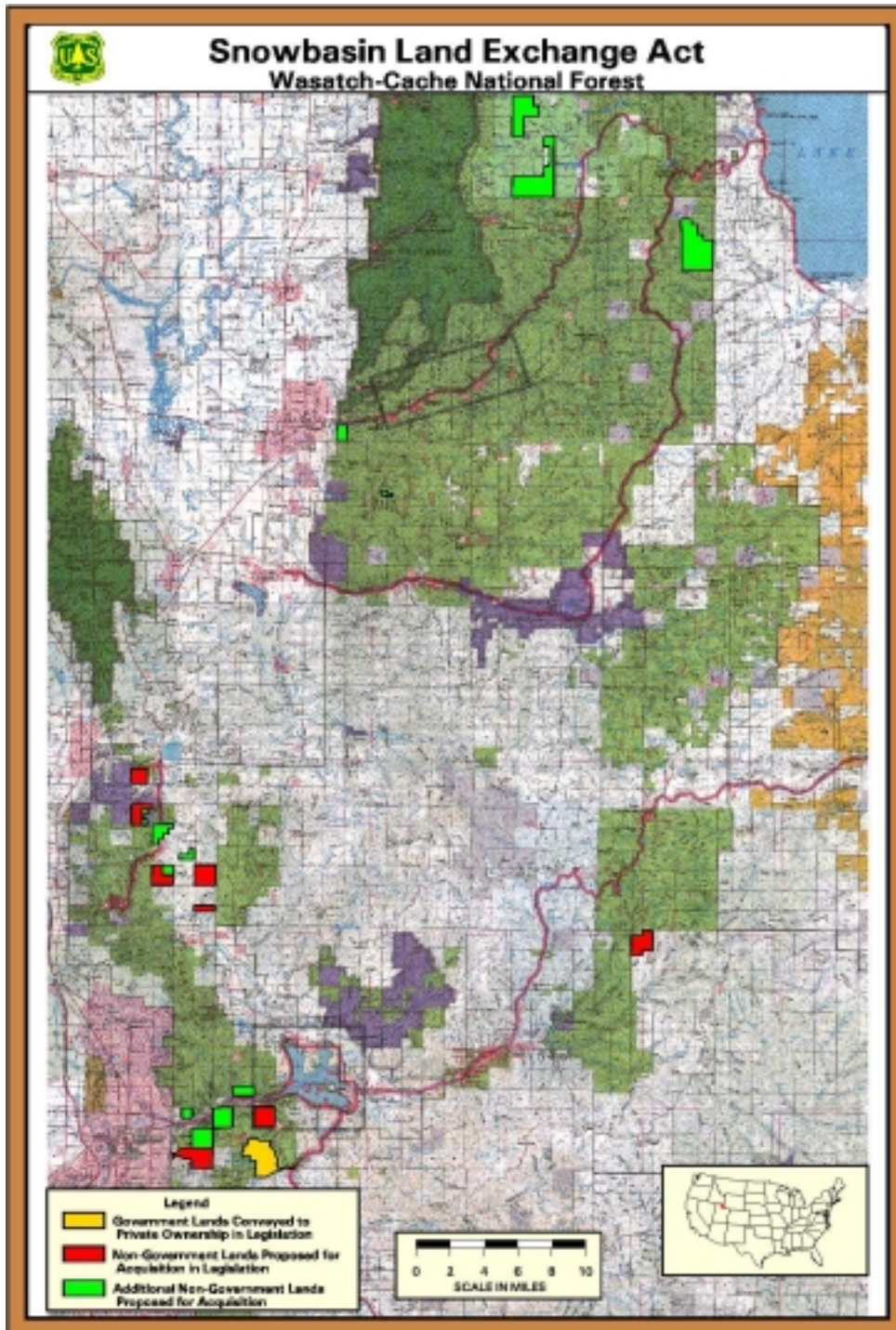
Vegetation Types

Federal Lands Public Resources Conveyed



- ◇ 6 miles intermit. stream
- ◇ 2.9 mi. of perennial stream
- ◇ Suitable TES habitat
- ◇ 1 mile of existing trail access
- ◇ Big game summer/winter range
- ◇ FS administrative site
- ◇ Dispersed recreation
- ◇ Administration of base area development

Non-Federal Lands

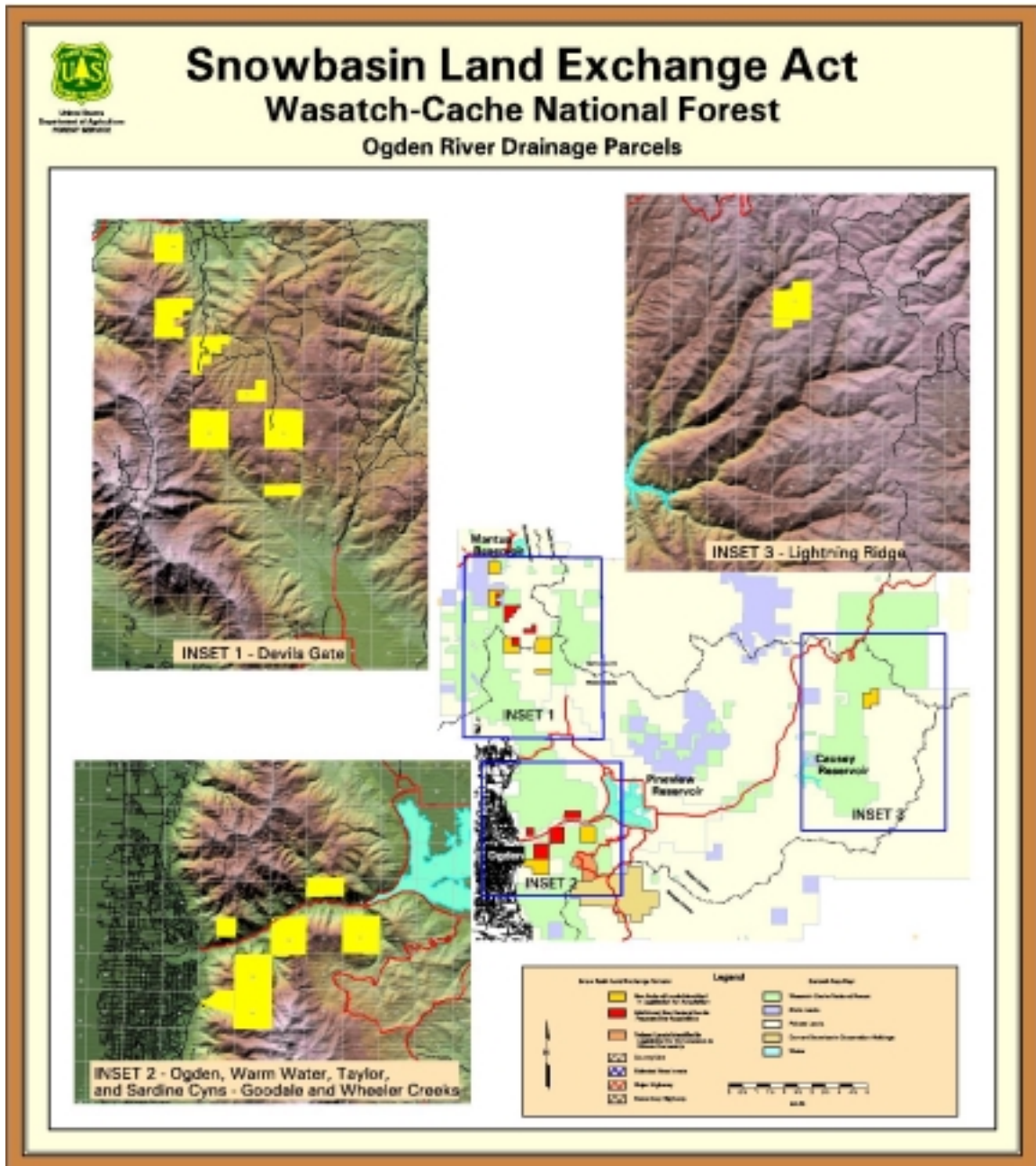


- ◇ 11,757 acres
- ◇ Multiple public benefits
- ◇ Located in four counties

Non-Federal Lands

Weber County

Total Acres: 4,794



- ◇ Wheeler Creek (640acres)
- ◇ Taylor Canyon (847 acres)
- ◇ Lightning Ridge (641 acres)
- ◇ Goodale Creek (320 acres)
- ◇ Warm Water Canyon (640 acres)
- ◇ Ogden Canyon(160acres)
- ◇ Sardine Canyon (586 acres)
- ◇ North Fork (960 acres)

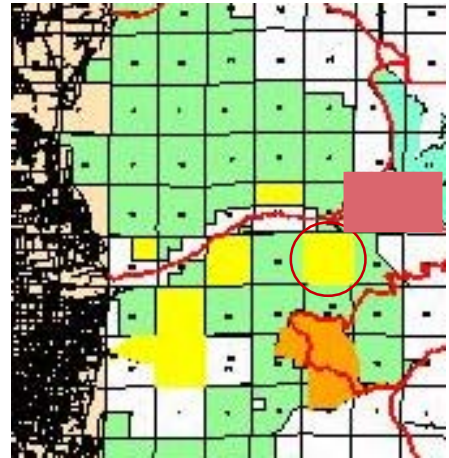
Non-Federal Lands

Weber County

Wheeler Creek (640 acres)

Public Benefits

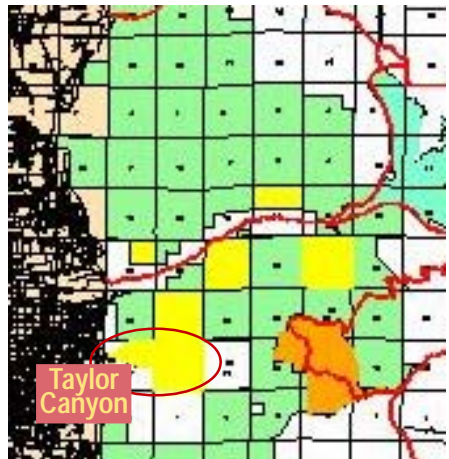
- Suitable TES habitat
 - Bonneville Cutthroat Trout
 - Burkes draba
- Municipal watershed
- 1.8 mi. perennial stream
- 25 mi. existing trail access
- Big game winter range
- 4 mi. reduction in boundary
- Great Western Trail
- Future trail access
- Consolidates ownership
- .5 mi. intermittent stream



Taylor Canyon (847 acres)

Public Benefits

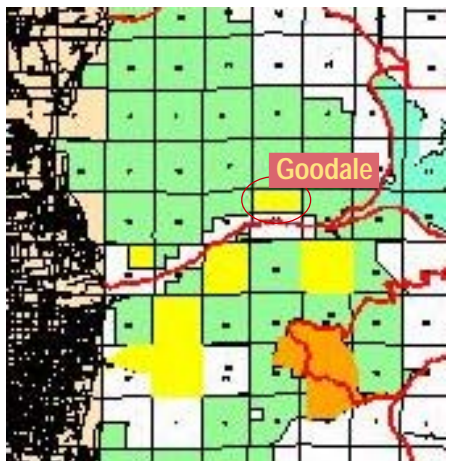
- Suitable TES habitat
 - Peregrine Falcon
- Watershed protection
- Scenic beauty
- 1 mi. reduction in boundary
- Bonneville Shoreline Trail
- 3 mi. existing trail access
- Big game winter range
- 1.6 mi. intermit. stream
- Urban open space
- Future trail access
- Heavy recreation use
- Development threats



Goodale (320 acres)

Public Benefits

- Scenic beauty
- 1 mi. reduction in boundary
- .4 mi. perennial stream
- Consolidates ownership
- Great Western Trail link
- .5 mi. existing trail access
- Ogden River Scenic Byway
- Future trail access
- Watershed protection
- Big game winter range



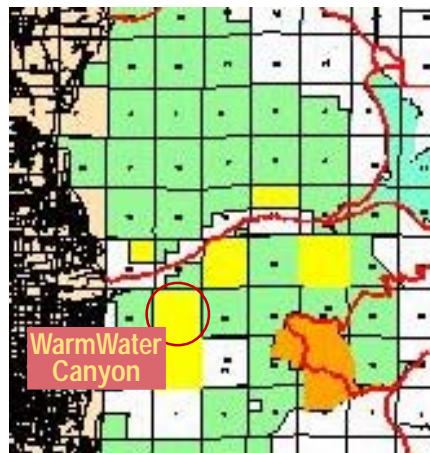
Non-Federal Lands

Weber County

Warm Water Canyon (640 acres)

Public Benefits

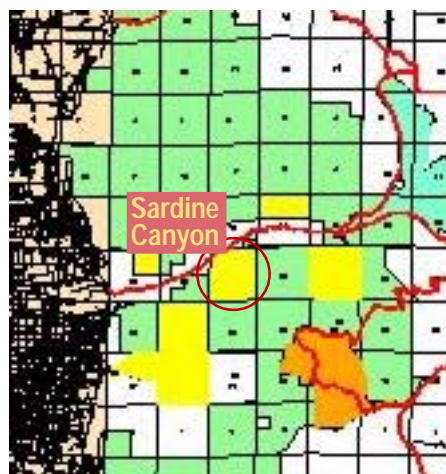
- Suitable TES habitat
 - Burkes draba*
 - Peregrine falcon*
- 1.3 mi. perennial stream
- 1.5 mi. existing trail access
- 3 mi. reduction in boundary
- Consolidates ownership
- Ogden River Canyon Scenic Byway
- Future trail access
- Heavy Recreation Use



Sardine Canyon (586 acres)

Public Benefits

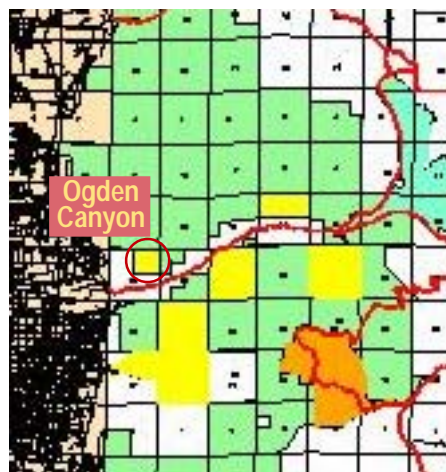
- Suitable TES habitat
 - Burkes draba*
- 1 mi perennial stream
- Scenic beauty
- 1 mi. reduction in boundary
- Consolidates ownership
- 1 mi. existing trail access
- Future trail access
- 1 mi. intermit. stream
- Ogden River Canyon Scenic Byway
- Watershed protection



Ogden Canyon (160 acres)

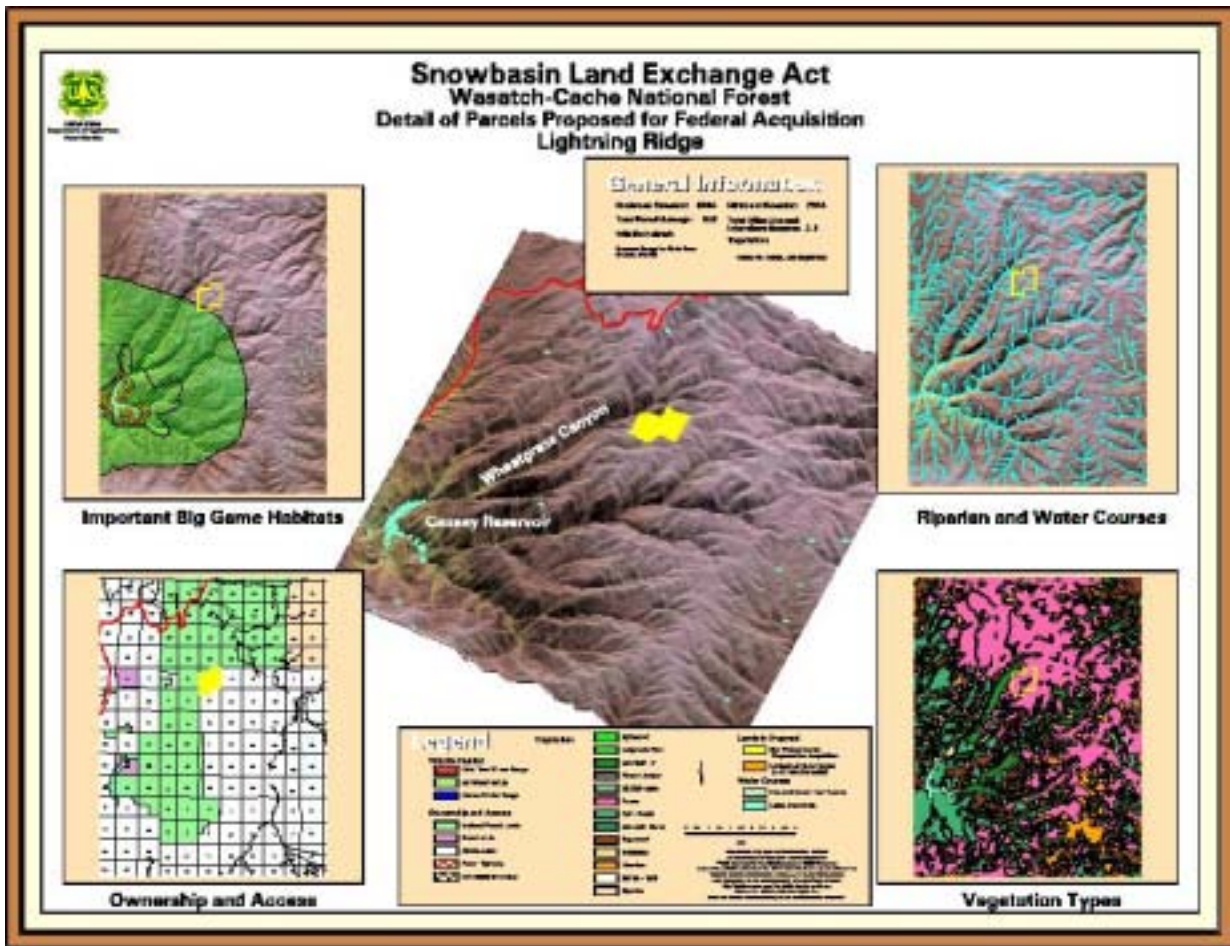
Public Benefits

- Suitable TES habitat
 - Peregrine falcon*
- Scenic beauty
- Watershed protection
- Ogden River Canyon Scenic Byway
- No net change in boundary



Non-Federal Lands

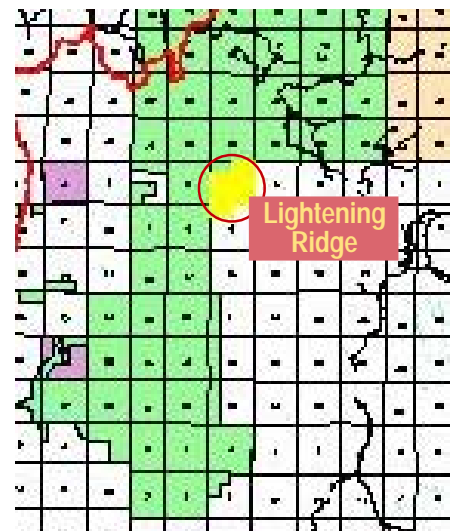
Weber County



Lightening Ridge (640 acres)

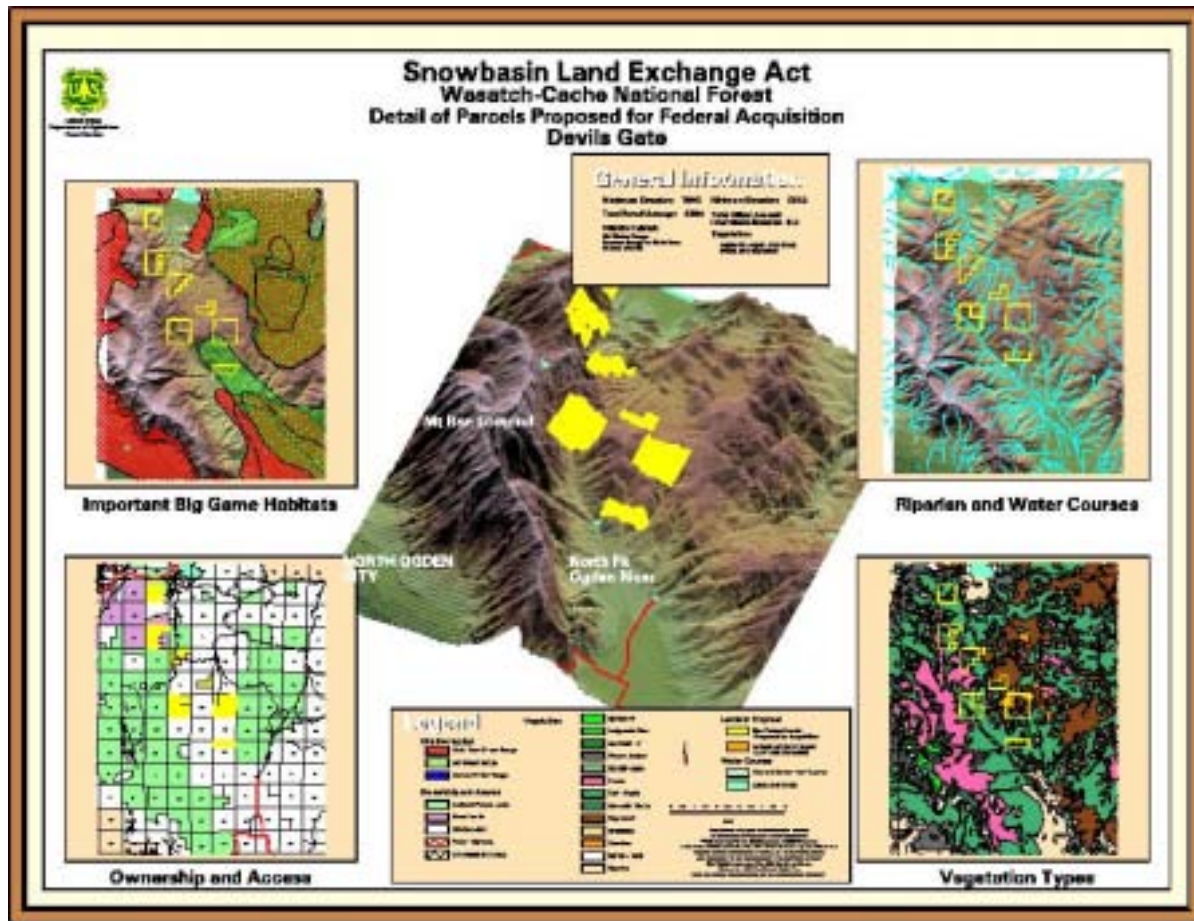
Public Benefits

- Suitable TES habitat
 - Lynx
 - Goshawk
- Big game summer range
- 1 mi. perennial stream
- Consolidates ownership
- No net change in boundary
- 1.5 mi. existing trail access to over 10,000 acres
- Dispersed recreation
- Important hunting access



Non-Federal Lands

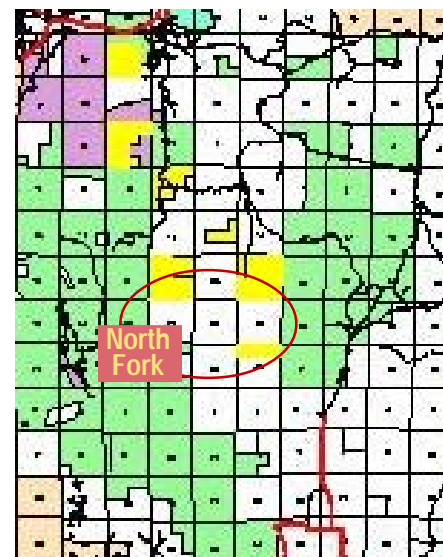
Weber County



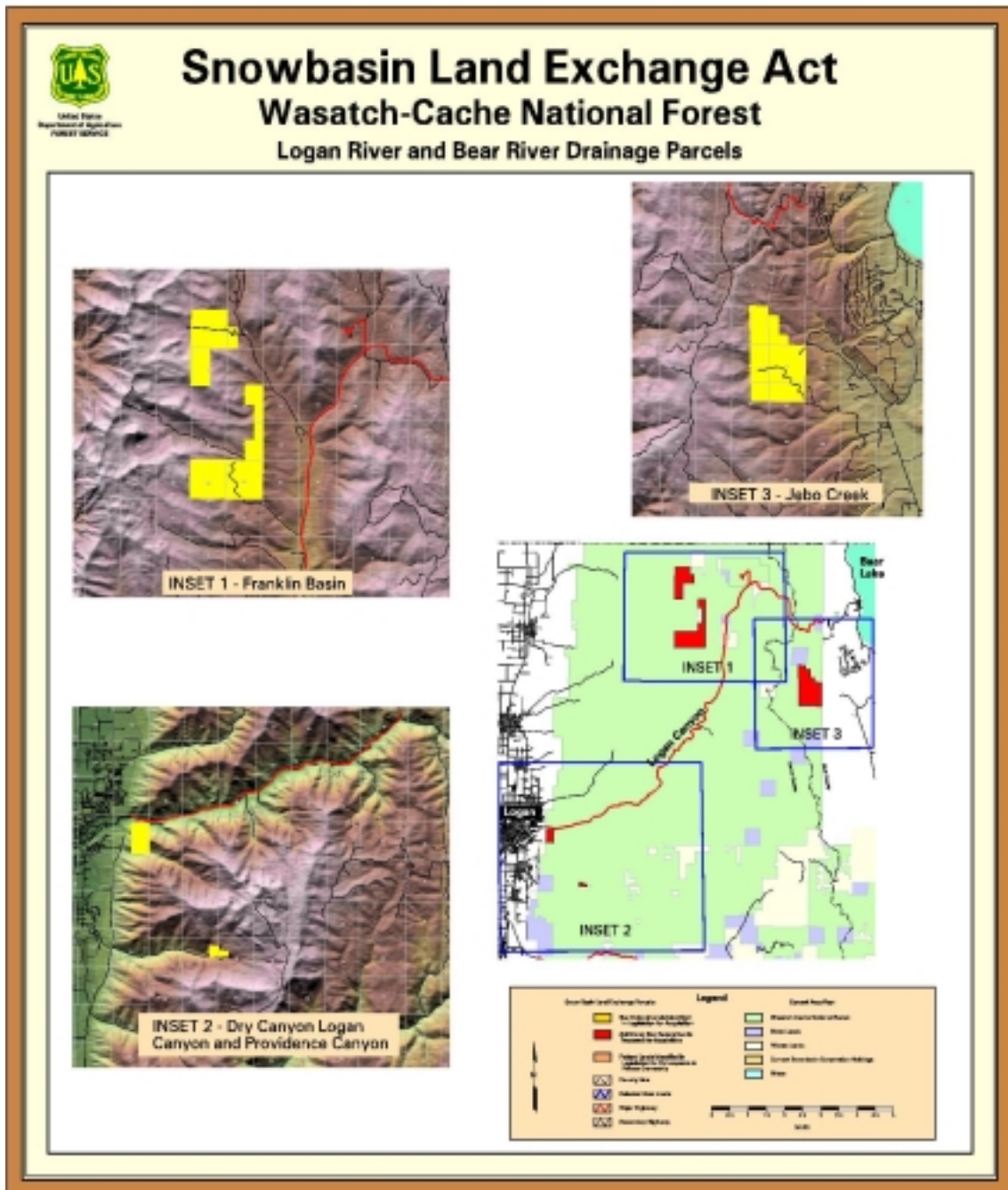
North Fork Ogden River (960 acres)

Public Benefits

- Suitable TES habitat
 - Bonneville Cutthroat Trout
- 1.0 mi. perennial stream
- Big game calving/fawning & summer range
- 3 mi. existing trail access
- 1.7 mi. increase in boundary
 - Future acquisition area
 - Dispersed recreation
 - Future trail/road access
 - Development threats



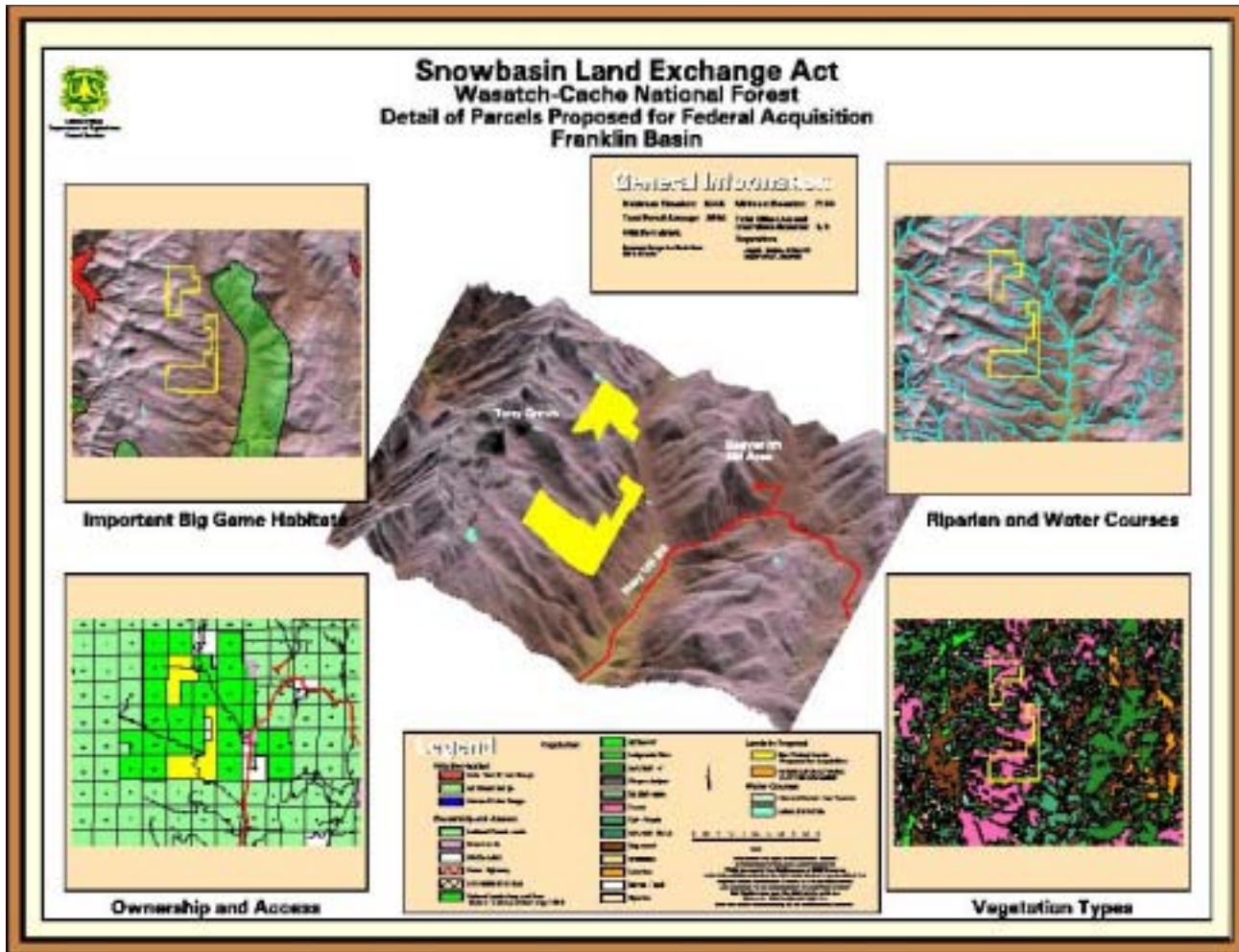
Non-Federal Lands Cache County Total Acres: 3,160



- ◇ Franklin Basin (2,800 acres)
- ◇ Logan/Dry Canyon (260 acres)
- ◇ Providence Canyon (100 acres)

Non-Federal Lands

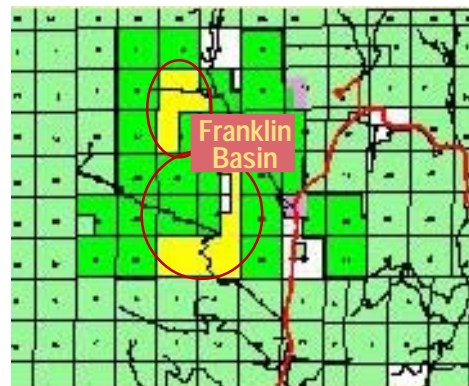
Cache County



Franklin Basin (2,800 acres)

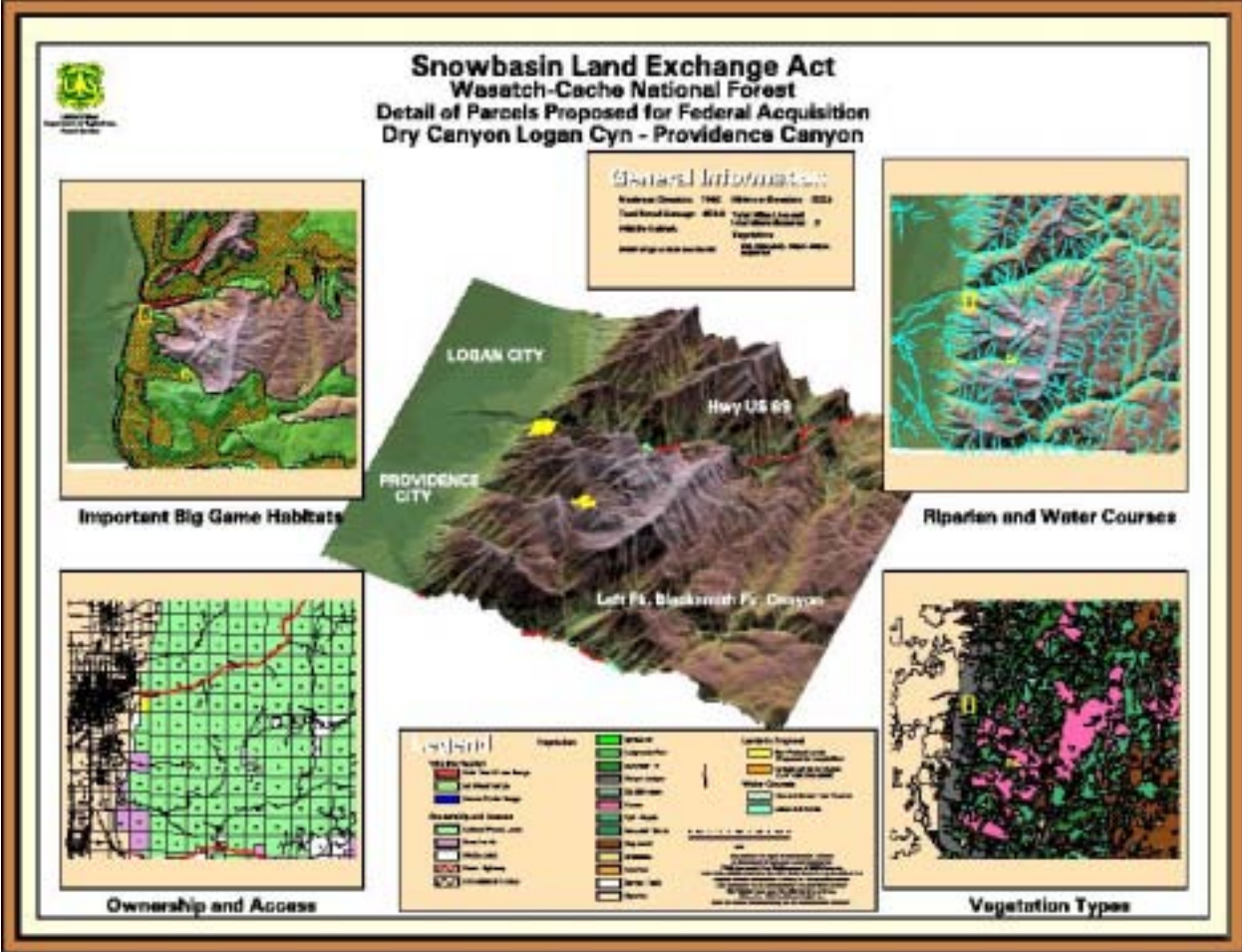
Public Benefits

- Suitable TES habitat
 - Bonneville Cutthroat Trout
 - Lynx
 - Goshawk
- .3 mi. perennial stream
- 7.6 mi. intermit. stream
- 1.5 mi. existing trail access
- 1.5 mi. existing road access
- Big game calving/fawning & summer range
- Consolidates ownership
- Watershed protection
- Development threats
- Dispersed recreation
- 14 mi. reduction in boundary
- Headwaters Logan River



Non-Federal Lands

Cache County



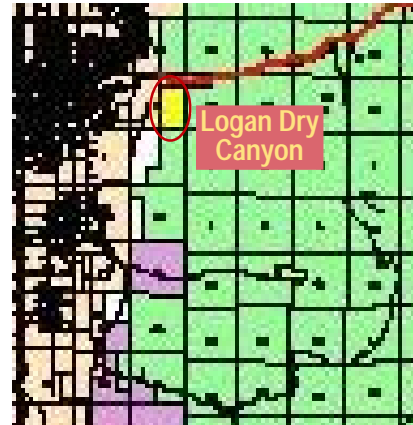
Non-Federal Lands

Cache County

Logan Dry Canyon (260 acres)

Public Benefits

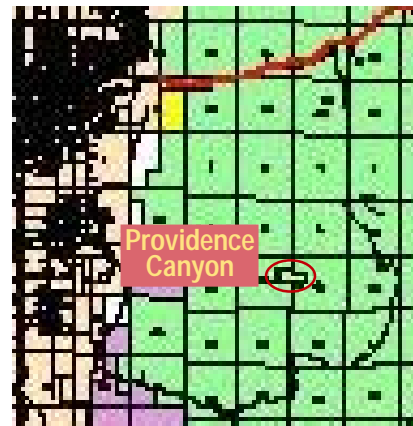
- Suitable TES habitat
- -*Maguires Primrose*
- .2 mi. intermit. stream
- Scenic beauty
- 1 mi. reduction in boundary
- Logan River Scenic Byway
- Links to Logan City recreation facilities
- Future Bonneville Shore-line Trail access
- Urban open space
- .5 mi. existing trail access
- Big game winter range
- Development threats



Providence Canyon (100 acres)

Public Benefits

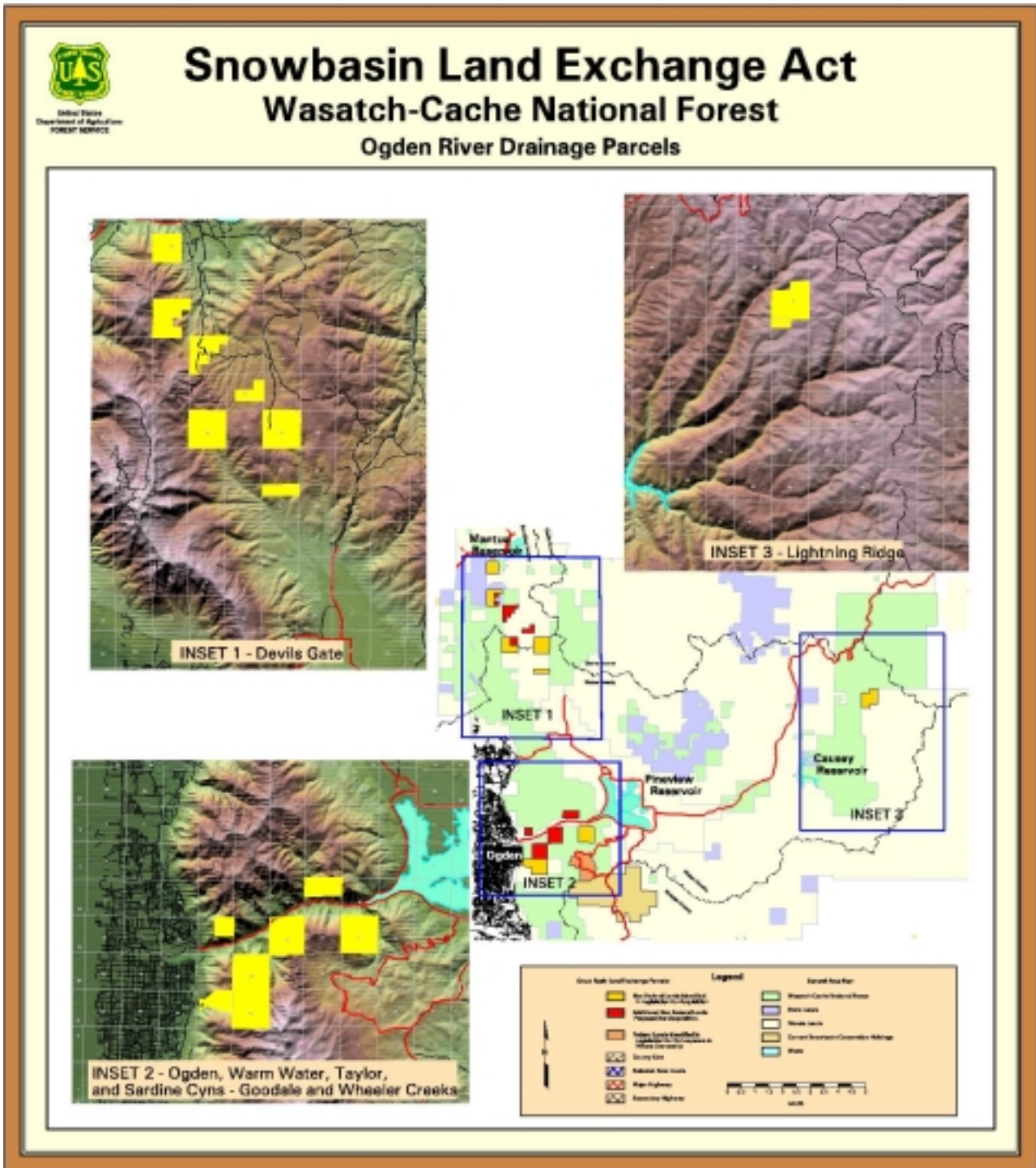
- .7 mi. perennial stream
- .1 mi. intermit. stream
- Site rehab./reclamation
- 1 mi. reduction in boundary
- .5 mi. existing road access
- Mineral materials
- Watershed protection
- Consolidates ownership
- Development threats
- Waterfall features
- Big game winter range



Non-Federal Lands

Box Elder County

Total Acres: 1,884

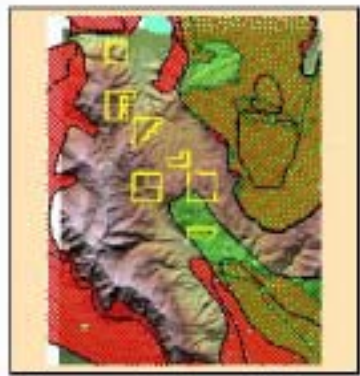


- ❖ Devils Gate (1,040 acres)
- ❖ Dock Flat (844 acres)



Snowbasin Land Exchange Act Wasatch-Cache National Forest Detail of Parcels Proposed for Federal Acquisition Devils Gate

General Information
 National Decade: 2000 - 2012
 Total Parcel Count: 536
 Total Acres Acquired: 134,000
 Location: Wasatch-Cache National Forest, B.C.
 Project Name: Devils Gate
 Date: 11/27/2012



Important Big Game Habitats



Riparian and Water Courses



Ownership and Access

Legend

	Proprietary		Private		Private		Private
	State		Private		Private		Private
	County		Private		Private		Private
	County		Private		Private		Private
	County		Private		Private		Private
	County		Private		Private		Private
	County		Private		Private		Private
	County		Private		Private		Private
	County		Private		Private		Private
	County		Private		Private		Private

Ownership

- State
- County
- Private
- Other

Access

- Public
- Private

Land Use

- Forest
- Open Space
- Other

Water

- Riparian
- Stream
- Other



Vegetation Types

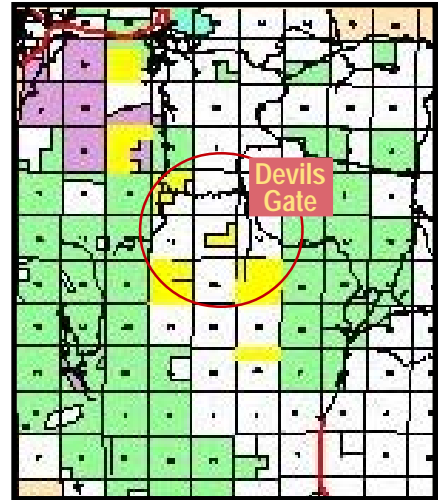
Non-Federal Lands

Box Elder County

Devils Gate (1,040 acres)

Public Benefits

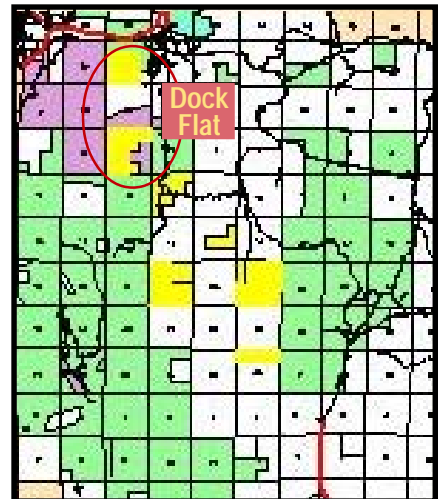
- Suitable TES habitat
 - Bald eagle*
- 3.1 mi. perennial stream
- 1 mi. existing road access (Willard Peak)
- 2 mi. existing road access to be evaluated
- 5 mi. increase in boundary
- Future acquisition area
- Big game winter & summer range
- Development threat
- Dispersed recreation
- Hunting access



Dock Flat (843 acres)

Public Benefits

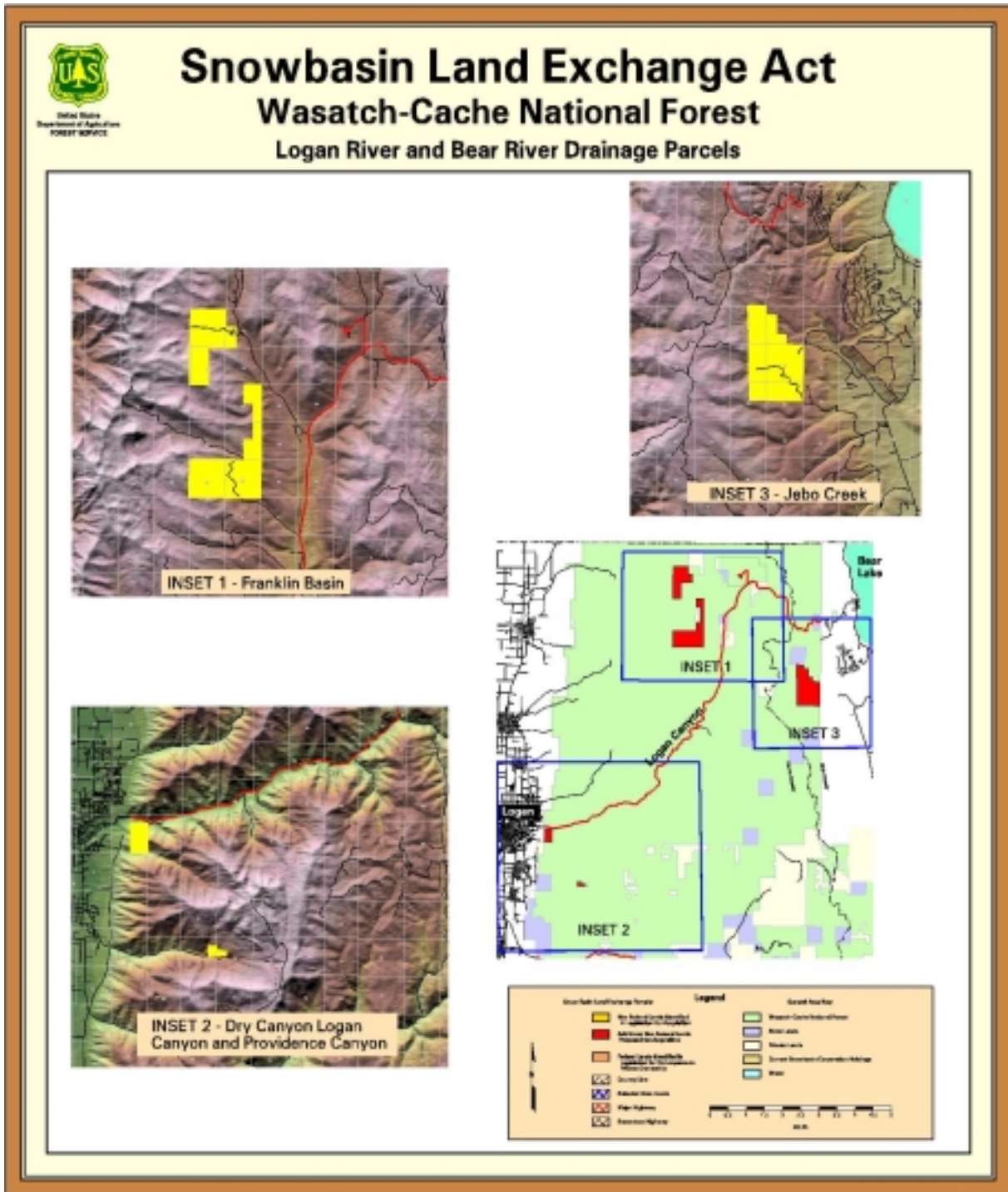
- Suitable TES habitat
 - Col. sharp-tailed grouse*
- 2.3 mi. perennial stream
- 2 mi. existing trail access
- 5 mi. reduction in boundary
- Muni. watershed protection
- Big game winter range
- Consolidates ownership
- Expands wildlife mgt. area
- Dispersed recreation
- Development threat



Non-Federal Lands

Rich County

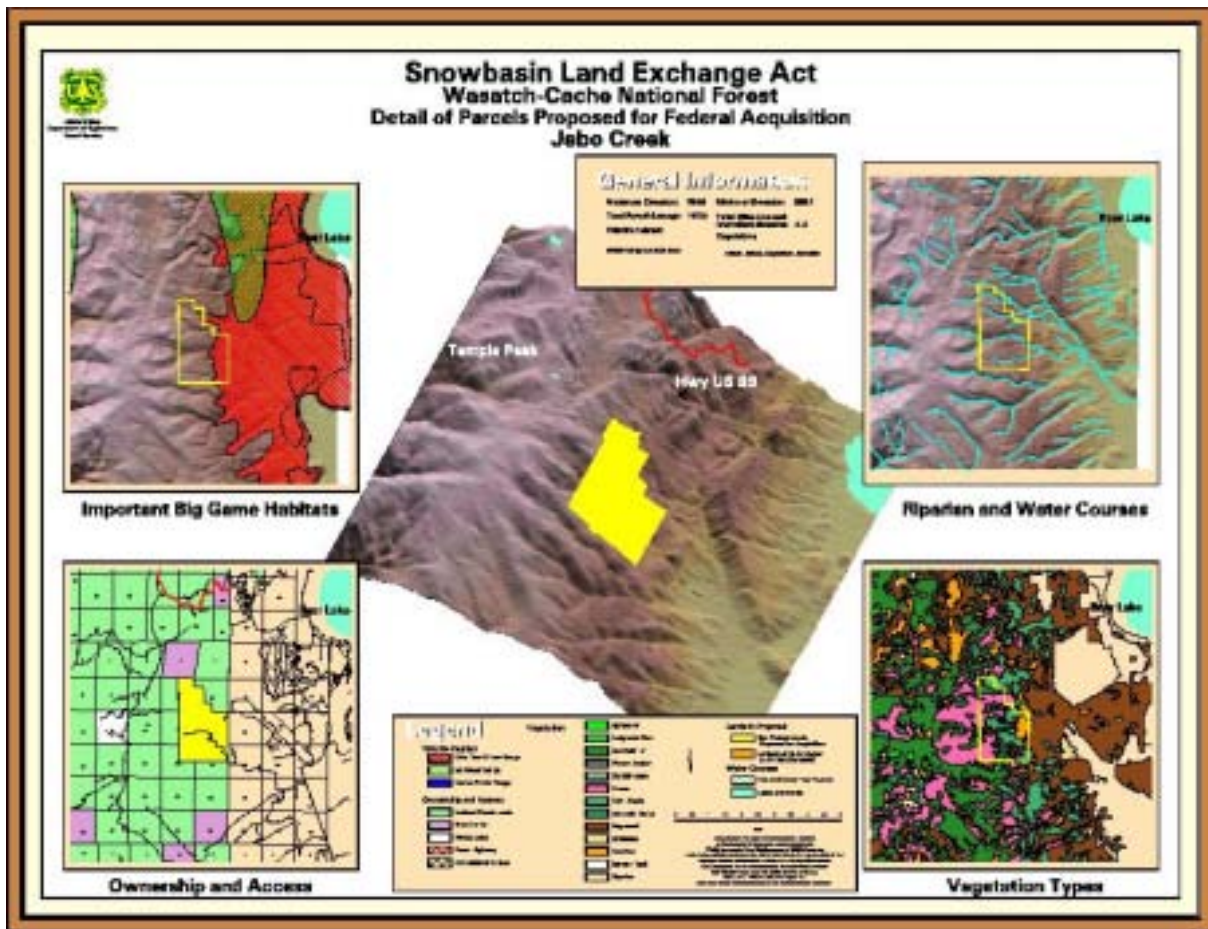
Total Acres: 1,920



❖ Jebo Creek (1,920 acres)

Non-Federal Lands

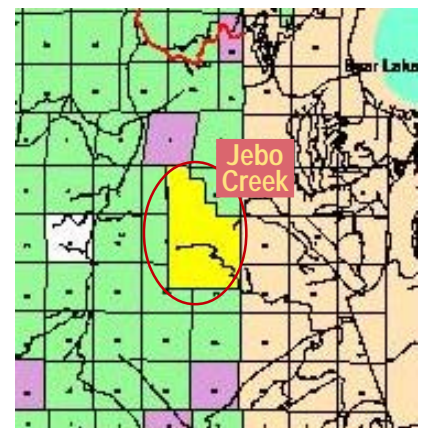
Rich County



Jebo Creek (1,920 acres)

Public Benefits

- Suitable TES habitat
 - Lynx
- 0.8 mi. of perennial stream
- 5.0 mi. of intermit. stream
- 1 mi. existing trail access
- 4.5 mi. reduction in boundary
- Big game winter range
- Consolidates ownership
- Dispersed recreation
- Development threat



Non-Federal Lands Summary

- ◇ 15.3 miles of perennial streams
- ◇ 21.5 miles of intermittent streams
- ◇ 23 mile reduction in boundaries
- ◇ Consolidation of ownership
- ◇ Eliminates threat of development
- ◇ Suitable TES habitat (plant & wildlife)
- ◇ Big game calving/fawning, summer & winter habitat
- ◇ 3 miles existing road access acquired
- ◇ 3.5 miles existing 4WD road to be evaluated (Box Elder County)
- ◇ 15.5 miles existing trail access acquired
- ◇ Wide variety of dispersed recreation opportunities (winter/summer)

County Summary

County	Federal Land Exchanged (acres)	Land Acquired (acres)	Federal Land Net Gain (acres)
Weber	1,369	4,794	+ 3,425
Morgan	8	0	- 8
Cache	0	3,160	+ 3,160
Rich	0	1,920	+ 1,920
Box Elder	0	1,883	+ 1,884
TOTAL	1,377	11,757	+ 10,380

Federal & Non-Federal Comparison

	Total Acres	Perennial Stream (miles)	Intermit. Stream (miles)	Road Access (miles)	Trail Access (miles)	Boundary Change (miles)
Snowbasin Federal Lands	1,377	(2.9)	(6.0)	0	(1)	(4.4)
Non-Federal Lands	11,757	15.3	21.5	3.0	15.5	(23)
Net Gain	10,380	12.4	15.5	3.0	14.5	-18.6

What's Next?

- ❖ Public notification
 - Open houses
 - Media
 - Local government briefings
 - Website
- ❖ Management direction
 - Forest Plan revision
 - Travel management
- ❖ Boundary posting
- ❖ Map updates

