



Adventures

USDA Forest Service
Pacific Southwest Region

Lassen National Forest

Welcome



Lassen National Forest lies at the heart of a fascinating part of California, a crossroads of people and nature. This is where the Sierra Nevada granite, the volcanoes of the Cascade Range, and the lava flows and faulting of the Great Basin and Modoc Plateau meet and blend to form a variety in terrain, geology, plant and

animal life and rich human history. The Forest offers many opportunities for relaxation, discovery and adventure.

You are invited to explore and discover what this unique area has to offer. This mini visitor guide highlights our campgrounds for the year 2006.

Major Recreation Areas



In a scenic mountain setting, **Lake Almanor** is one of the largest man-made lakes in California. It offers fishing, boating, water-skiing,

swimming, camping, and picnicking. The Almanor Recreation Trail winds along the west side of Almanor providing views of the lake and the mountains. Family and group campgrounds, boat launch facilities, and private marinas are available.

2006 has brought in a lot of rain and snow. The creeks and lakes are full. The 1,000 Lakes Snow Survey of April 1 is 113% of normal. Some of the campgrounds might not be open as early as usual. There is a lot of clean up work happening, so please call for the latest information.

Merrill Campground will reopen this year with a whole new way of camping. Some sites offer electricity and other amenities.

Old Station Information Center is celebrating their Discovery Gardens with an open house on July 22, 2006. Eight interpretive gardens will be showcased. The Center is open Saturday and Sunday starting April 29 and will open 7 days a week starting June 17 from 8:30 a.m. to 4:00 p.m.

If you find yourself without a flashlight and you want to tour Subway Cave, stop by Old Station Information Center. They have flashlights available to rent for a nominal fee.

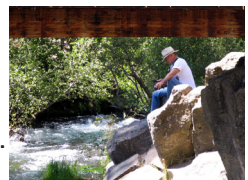


The second largest natural lake in California, **Eagle Lake** is framed by pine and sage.

Camping, fishing, swimming, picnicking, and boating are popular activities. Family and group campgrounds, naturalist activities, marina, boat launch facilities, store, laundry and showers are available. The seven mile long South Shore Trail is ideal for bicycles or just a pleasant stroll. Eagle Lake is famed for its trophy trout averaging three to five pounds.

In the shadow of Lassen Peak, six campgrounds and four picnic areas are nestled along ten miles of **Hat Creek**.

There are opportunities for fishing, hiking, camping, picnicking and viewing wildlife. Hat Creek also has lava tubes, dormant and extinct volcanoes, massive lava flows and fault lines that reveal an exciting volcanic past.



CAMPGROUND INFORMATION



Developed Campsites

Lassen National Forest is operating recreation facilities at Almanor and Hat Creek Ranger Districts. Eagle Lake Recreation Area which includes the marina, campgrounds, and day-use facilities are operated by the Lassen College Foundation, under a special use permit with the Lassen National Forest. The College Foundation operates these facilities to fund scholarships for Lassen Community College Students.

At Eagle Lake, Merrill Campground will be closed from June 12-23 for roadwork. This campground has been reconstructed and offers many new upgrades. At Hat Creek Ranger District, Bridge Campground will not have water, so plan on bringing drinking water with you.

All campgrounds have fire rings, tables, and restroom facilities. Most developed campgrounds have a "host," a resident camper who can provide campsite information, monitor campground use and contact forest officers in the event of problems.

Reservations

This year, sites at almost all forest campgrounds are available on a first-come-first-served basis, plus some have a loop or group area for reservation. Reservations for these campgrounds can be made through the National Recreation Reservation Service by calling toll free: Phone 877-444-6777; TDD: 877-833-6777; On-line www.ReserveUSA.com.

Hat Creek Campgrounds Developed Campsites

Bridge: On Highway 89. Fee, elevation 4000', 25 sites, no drinking water, season late April - October.

Big Pine: On Highway 89. Fee, elevation 4500', 19 sites, handpump water, season May - October

Cave: On Highway 89. Fee, elevation 4300', 46 sites, water, season late April - October, 16 sites open all year, facilities and fishing accessible.

Dusty: On Highway 89, gravel road, on Lake Britton. Fee, elevation 3000', 7 sites which consist of two groups sites 25 people and 5 family sites up to 10 people, vault toilets. Operated by PG&E, no drinking water available.

Hat Creek (Hat): On Highway 89. Fee, elevation 4300', 75 sites, water, season late April - October, sites 1-9 under reservation. Sunny location.

Hat Creek Group: On Highway 89. Fee; elevation 4300'; water, season late April - October. Three group sites, reservation required.

Rocky: On Highway 89. Fee, elevation 4000', 8 sites, no drinking water available, season late April - October.

Honn: On Highway 89. Fee, elevation 3500', 6 sites, no drinking water available, season May - October.

Almanor Campgrounds Developed Campsites

Alder Creek: On Highway 32. Fee, elevation 3900', 6 sites, stream water, season Late April - Nov. 1, weather permitting.

Almanor: On Lake Almanor. Fee, elevation 4550', 103 sites, piped water. Reservations available on 19 sites, accessible - 1 site at Almanor North, accessible restroom. Season May 1 - Nov. 1, weather permitting.

Almanor Group: On Highway 89. Fee, elevation 4550'. Season May 1 - Nov. 1, weather permitting. Reservations required.

Battle Creek: On Highway 36. Fee, elevation 4800', 50 sites, piped water, season late April - November 1, weather permitting.

Black Rock: On Ponderosa Way. Fee, elevation 2100', 6 sites, stream water, season all year, weather permitting. Road not maintained Nov.-May.

Butte Meadows: Off Highway 32. Fee, elevation 4600', 13 sites, piped water, season late April – November 1, weather permitting.

Cherry Hill: Off Highway 32. Fee, elevation 4700', 26 sites, piped water, season late April – November 1, weather permitting.

Domingo Springs: Off Highway 36. Fee, elevation 5060', 18 sites, piped water, season late May – November 1, weather permitting.

Elam: On Highway 32. Fee, elevation 4400', 15 sites, piped water, season mid April – November 1, weather permitting.

Gurnsey: On Highway 36. Fee, elevation 4700', 52 sites, piped water, season May 1 – November 1, weather permitting.

Gurnsey Group: On Highway 36, fee, elevation 4700', piped water, reservations, season May 1 - November 1, weather permitting.

High Bridge: Off Highway 36. Fee, elevation 5200', 12 sites, piped water, season late May - November 1 weather permitting.

Hole-in-the-Ground: Off Highway 36. Fee, elevation 4300', 13 spaces, piped water, season late April - November 1, weather permitting.

Potato Patch: On Hwy. 32. Fee, elevation 3400', 32 sites, piped water, season April - Nov 1, weather permitting.

Rocky Knoll: At Silver Lake. Fee, elevation 6000', 18 sites, piped water, season late May - November 1, weather permitting.

Silver Bowl: At Silver Lake. Fee, elevation 6000', 18 sites, piped water, season late May - November 1 weather permitting.

Soldier Creek: Off Road 308, out of Butte Meadows. Fee, elevation 4890', site numbers vary, stream water, season late May - November 1, weather permitting.

South Antelope: On County Road 202, off Highway 36. No fee, elevation 2700', 4 sites, stream water, season yearlong.

Willow Springs: Off Highway 36. Fee, elevation 5100', 14 sites, stream water, season late May - November 1, weather permitting.

Eagle Lake Campgrounds

Developed Campsites

New this year! Eagle Lake Campgrounds including Merrill, Eagle, West Eagle, Christi, Aspen, Crater and Bogard will be managed by Lassen College Foundation. The operating season will be May 18-Oct. 31, 2006. Merrill Campground will be closed June 12-23 for roadwork and all sites will be closed.

If you would like a map of Merrill please contact the Eagle Lake District Office.

Aspen Grove: At south end of Eagle Lake. Fee, elevation 5100', 26 sites, piped water, season May - September, tents-only campground, dump station 3.5 miles.

Bogard: Off Highway 44. Fee, elevation 5600', 11 sites, handpump water, dump station 27 miles, season May - October, maximum length 25'.

Crater Lake: Off Highway 44. Fee, elevation 6800', 17 sites, handpump water, season June - October. No motors on boats. Dump station 34 miles. Motorhomes and large trailers not recommended, 7 mile steep, rough road to campground.

Christie: At south end of Eagle Lake. Fee, elevation 5100', 69 sites, piped water, season May - September, dump station 2.5 miles, handicapped facilities, check with campground host, some pull-through sites for large equipment.

Eagle: At south end of Eagle Lake. Fee, elevation 5100', 50 sites, piped water, season May - September, dump station 1.5 miles, accessible facilities, Reservations only beginning May 15.

Butte Creek: Off Highway 44. No fee, elevation 5600', 10 sites, no drinking water available, season, May - October, dump station 10 miles, unimproved campsites.

Goumaz: Off Highway 36 or 44. Fee, elevation 5200', 5 sites, drinking water available, dump station 18 miles, season May - October, unimproved campsites for small equipment.

Merrill: At south end of Eagle Lake. Fee, elevation 5100', 173 sites, season May - Oct. Merrill is now open from renovation with full and partial hook-ups, longer spurs, and is more accessible. Check out ReserveUSA.com for a map and more information.

Roxie Peconom: Off Highway 36. No fee, elevation 4800', 10 sites, handpump water, dump station 7 miles, season May - October, park in lot, walk into camp sites.

West Eagle Group #1: At south end of Eagle Lake. Fee, elevation 5100', maximum of 100 people, parking lot available, piped water, dump station 1.5 miles, season May - October. Reservation only.

West Eagle Group #2: At south end of Eagle Lake. Fee, elevation 5100', maximum 75 people, parking lot available, piped water, dump station 1.5 miles, season May - October. Reservation only.

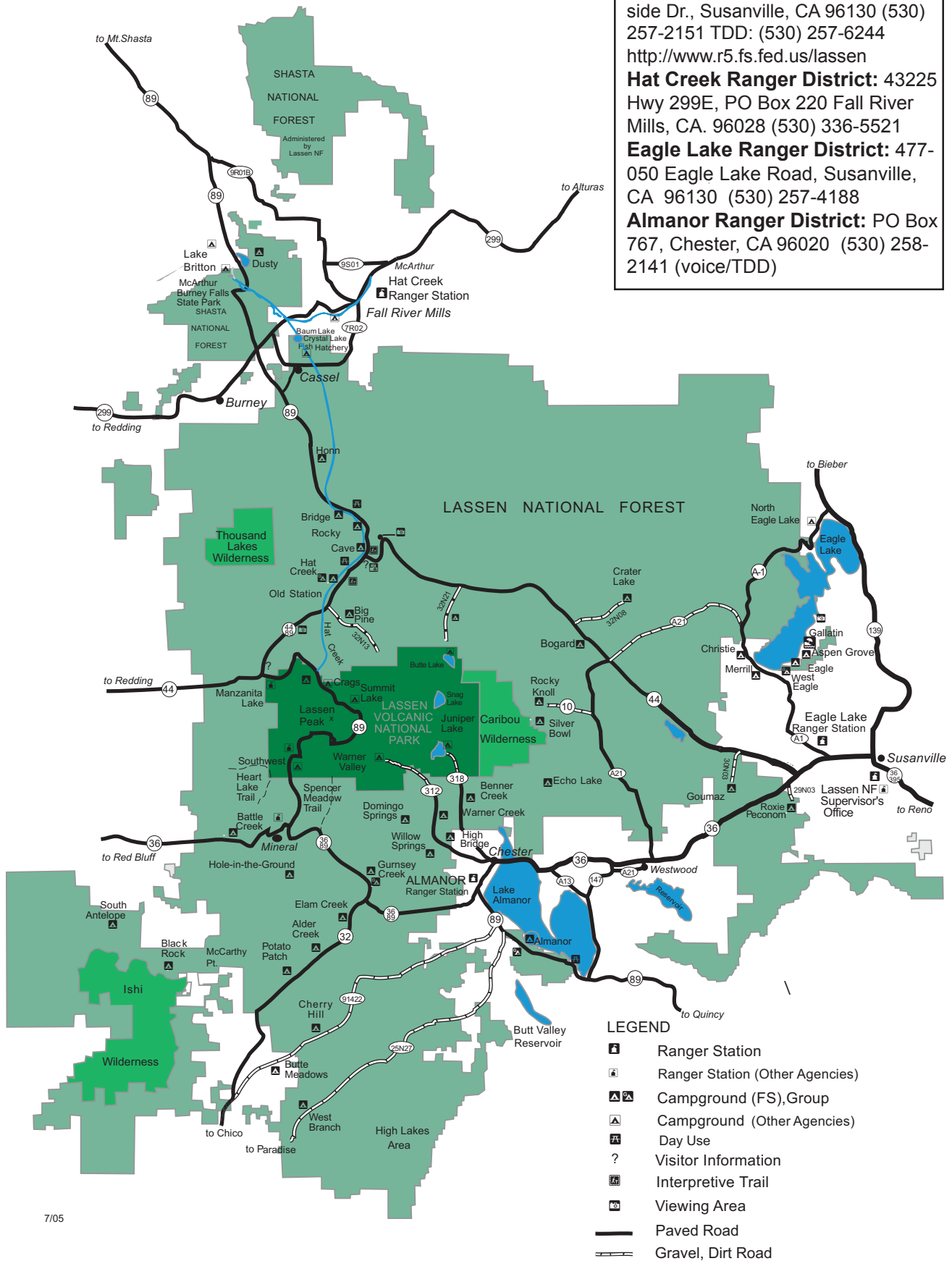
For More Information:

Supervisor's Office: 2550 Riverside Dr., Susanville, CA 96130 (530) 257-2151 TDD: (530) 257-6244
<http://www.r5.fs.fed.us/lassen>

Hat Creek Ranger District: 43225 Hwy 299E, PO Box 220 Fall River Mills, CA. 96028 (530) 336-5521

Eagle Lake Ranger District: 477-050 Eagle Lake Road, Susanville, CA 96130 (530) 257-4188

Almanor Ranger District: PO Box 767, Chester, CA 96020 (530) 258-2141 (voice/TDD)



- LEGEND**
- Ranger Station
 - Ranger Station (Other Agencies)
 - Campground (FS), Group
 - Campground (Other Agencies)
 - Day Use
 - Visitor Information
 - Interpretive Trail
 - Viewing Area
 - Paved Road
 - Gravel, Dirt Road