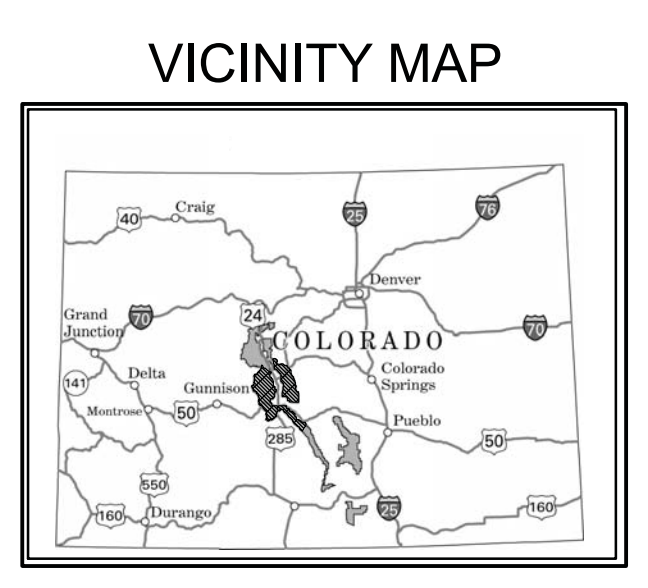


**Motor Vehicle Use Map**  
 San Isabel National Forest  
 Salida Ranger District



**INFORMATION SOURCES**

Salida Ranger District  
 325 West Rainbow Blvd.  
 Salida, CO 81201  
 (719) 539-3591

Forest Supervisor  
 Pike and San Isabel National Forests  
 Cimarron and Comanche National Grasslands  
 2840 Kachina Drive  
 Pueblo, CO 81008  
 (719) 553-1400

In case of Emergency: Dial 911  
 Salida Ranger District Website:  
[www.fs.fed.us/r2/psicc/sal/](http://www.fs.fed.us/r2/psicc/sal/)

**treadlightly!**  
 Travel and recreate with minimum impact.

Respect the environment and the rights of others.

Educate yourself plan and prepare before you go.

Allow for future use of the outdoors by leaving it better than you found it.

Discover the rewards of responsible recreation.

For more information on Tread Lightly!, go to [www.treadlightly.org](http://www.treadlightly.org) or call 1-800-966-9900.

The U.S. Department of Agriculture (USDA) prohibits discrimination in all its programs and activities on the basis of race, color, national origin, age, disability, and where applicable, sex, marital status, familial status, parental status, religion, sexual orientation, genetic information, political beliefs, reprisal, or because all or part of an individual's income is derived from any public assistance program. (Not all prohibited bases apply to all programs.) Persons with disabilities who require alternative means for communication of program information (Braille, large print, audiotape, etc.) should contact USDA's TARGET Center at (202) 720-2600 (voice and TDD). To file a complaint of discrimination, write to USDA, Director, Office of Civil Rights, 1400 Independence Avenue, S.W., Washington, D.C. 20250-9410, or call (800) 795-3272 (voice) or (202) 720-6382 (TDD). USDA is an equal opportunity provider and employer.

**PURPOSE AND CONTENTS OF THIS MAP**

The designations shown on this map are effective as of the date stamped or printed on the front cover. This map shows the National Forest System roads, National Forest System trails, and the areas on National Forest System lands in the Salida Ranger District that are designated for motor vehicle use pursuant to 36 CFR 212.51. This map also contains a list of those designated roads, trails, and areas that enumerates the types of vehicles that are allowed on each route and in each area and any seasonal restrictions that apply on those routes and in those areas.

Designation of a road, trail, or area for motor vehicle use by a particular class of vehicle under 36 CFR 212.51 should not be interpreted as encouraging or inviting use, or to imply that the road, trail or area is passable, actively maintained, or safe for travel. Motor vehicle designations include parking along designated routes and at facilities associated with designated routes when it is safe to do so and when not causing damage to National Forest System resources. Seasonal weather conditions and natural events may render designated routes and trails impassable for extended periods. Designated areas may contain dangerous or impassable terrain. Many designated roads and trails may be passable only by high-clearance vehicles or four-wheel drive vehicles. Maintenance of designated roads and trails will depend on available resources, and may receive little maintenance.

This motor vehicle use map identifies those roads, trails, and areas designated for the motor vehicle use under 36 CFR 212.51 for the purpose of enforcing the prohibition at 36 CFR 291.13. This is a limited purpose. The other public lands shown for information and navigation purposes only and are not subject to designation under the Forest Service travel management regulation.

These designations apply only to National Forest System roads, National Forest System trails, and areas on National Forest System lands.

Read and understand this map in its entirety. If you have questions, please contact the Salida Ranger District for clarification.

Road, trail, and area users must comply with this map, as well as all Federal, State, and local laws and regulations. Compliance with these rules is the responsibility of the user.

**OPERATOR RESPONSIBILITIES**

Operating a motor vehicle on National Forest System roads, National Forest System trails, and in areas on National Forest System lands carries a greater responsibility than operating that vehicle in a city or other developed setting. Not only must the motor vehicle operators know and follow all applicable traffic laws, but they need to show concern for the environment as well as other forest users. The misuse of motor vehicles can lead to the temporary or permanent closure of any designated road, trail, or area. Operators of motor vehicles are subject to State traffic law, including State requirements for licensing, registration, and operation of the vehicle in question.

Motor vehicle use, especially off-highway vehicle use, involves inherent risks that may cause property damage, serious injury, and possibly death to participants. Riders should drive cautiously and anticipate rough surfaces and features, such as snow, mud, vegetation, and water crossings common to remote driving conditions. Participants voluntarily assume full responsibility for these damages, risks, and dangers. Motor vehicle operators should take care at all times to protect themselves and those under their responsibility.

Much of the Salida Ranger District is remote, and medical assistance may not be readily available. Cellular telephones do not work in many areas of the Salida Ranger District. Operators should take adequate food, water, first aid supplies, and other equipment appropriate for the conditions and expected weather.

ALWAYS REMEMBER TO RESPECT PRIVATE LAND! PROTECT YOUR PRIVILEGE! STAY ON DESIGNATED ROADS AND TRAILS AND IN DESIGNATED AREAS.

Read and understand this map in its entirety. If you have questions, please contact the Salida Ranger District for clarification.

Road, trail, and area users must comply with this map, as well as all Federal, State, and local laws and regulations. Compliance with these rules is the responsibility of the user.

**Legend**

- Roads Open to All Vehicles
- Trails Open to Vehicles 50" or Less in Width
- Trails Open to Motorcycles Only
- Seasonal Designation (See Table)
- Highways, US, State, County, Other
- Other Public Trails
- FS Campground
- Picnic Area
- Motorized Trailhead
- Peaks
- Forest or Unit Boundary
- National Forest System Lands
- Non-National Forest System Lands within the National Forest
- Wilderness Areas
- County Boundary
- Township and Range Lines
- Section Lines
- Lakes and Rivers

0 0.5 1 2 3 4 Miles

**EXPLANATION OF LEGEND ITEMS**

**Roads Open to All Vehicles:**  
 Roads open to all motor vehicles, including smaller off-highway vehicles that may not be licensed for highway use (not to oversize or overweight vehicles under State traffic law).

**Trails Open to Vehicles 50" or Less in Width:**  
 Trails open only to motor vehicles less than 50 inches in width at the widest point on the vehicle.

**Trails Open to Motorcycles Only:**  
 Trails open only to motorcycles. Sidecars are not permitted.

**Seasonal Designation:**  
 This symbol, used in conjunction with one of the road or trail symbols, indicates that the road or trail is open only during certain portions of the year. Refer to Seasonal Designations Table for further instructions.

**Other Public Roads and Trails:**  
 Highways, U.S., State, County, Other  
 Other Public Trails

Used to show routes not designated for motorized use by the Forest Service. Part of the reference layers showing connections to towns and cities outside the forest boundary.

**Motorized Trail Access:**  
 This symbol indicates a trailhead for access to a motorized route. Not all motorized routes have trailheads and those that do may range from primitive to developed.



**PROHIBITIONS**

It is prohibited to possess, or operate a motor vehicle on National Forest System lands on the Salida Ranger District that is in accordance with these designations, 36 CFR 261.13.

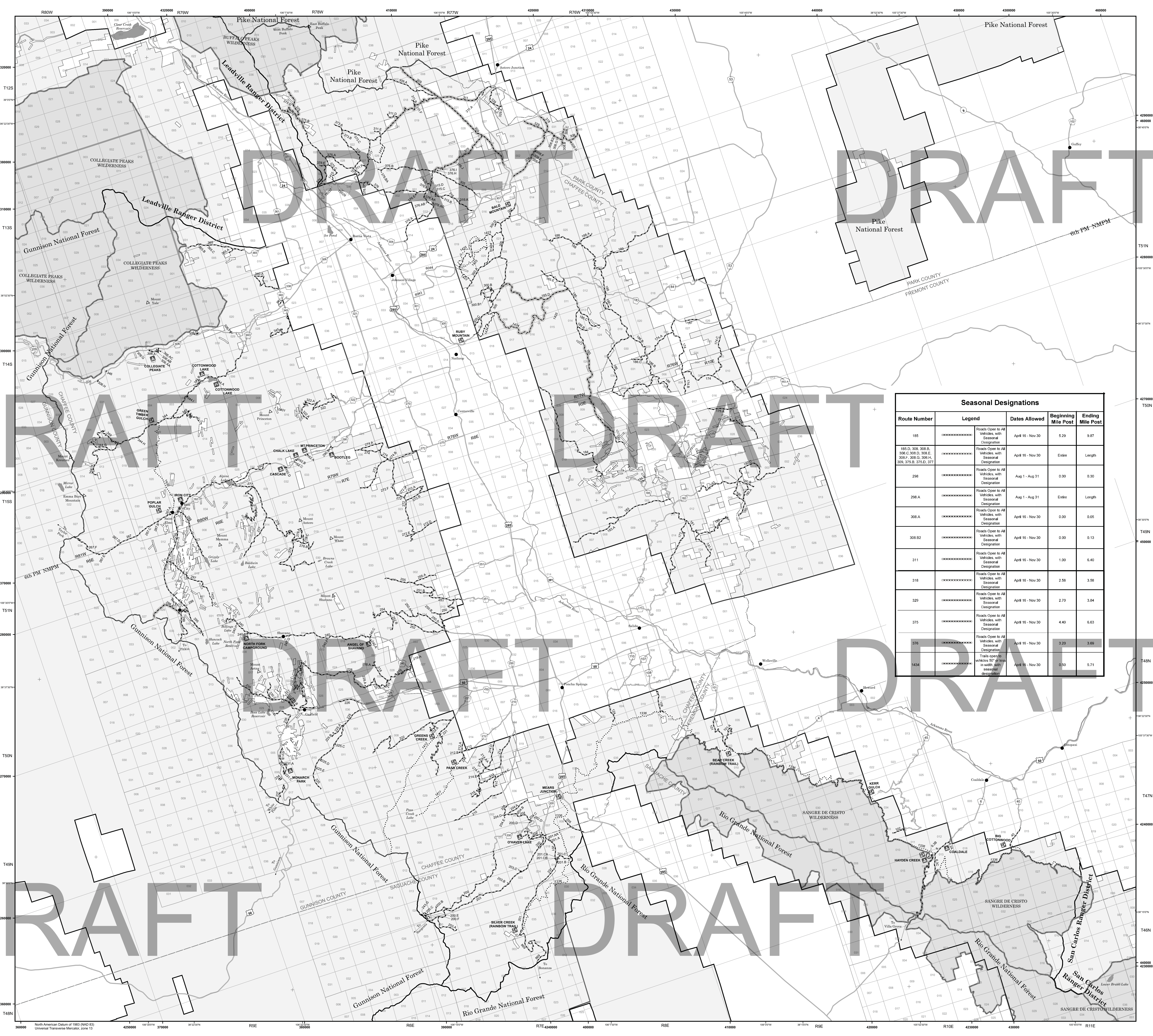
Violations of 36 CFR 261.13 are subject to a fine of up to \$5,000 or imprisonment for up to 6 months, or both (18 U.S.C. 357 (e)). This prohibition applies regardless of the presence or absence of signs.

This map does not display nonmotorized uses, over-snow uses, or other facilities and attractions on the Salida Ranger District. Obtain forest visitor information from the local National Forest Office.

Designated roads, trails and areas may also be subject to temporary emergency closures and visitors must comply with signs notifying them of such restrictions. A national forest may issue an order to close a road, trail or area on a temporary basis to protect the life, health, or safety of forest visitors or the natural or cultural resources in these areas. Such a temporary and/or emergency closure is consistent with the Travel Management Rule (36 CFR 212.52b); 36 CFR 261 subpart B).

The designation "road or trail open to all motor vehicles" does not supersede State traffic law.

The designations shown on this map will remain in effect until revised with the publication of a new map. In January of each year, this motor vehicle use map will either be revised with the publication of a new map, or it will be validated for the new year by the Ranger District with a red stamp that says: "Valid for Year 20\_\_"



Seasonal Designations				
Route Number	Legend	Dates Allowed	Beginning Mile Post	Ending Mile Post
185	Roads Open to All Vehicles, with Seasonal Designation	April 16 - Nov 30	5.29	9.87
185 D, 308, 308 B, 308 C, 308 D, 308 E, 308 F, 308 G, 308 H, 309, 375 B, 215 D, 377	Roads Open to All Vehicles, with Seasonal Designation	April 16 - Nov 30	Entire	Length
298	Roads Open to All Vehicles, with Seasonal Designation	Aug 1 - Aug 31	0.00	0.30
298 A	Roads Open to All Vehicles, with Seasonal Designation	Aug 1 - Aug 31	Entire	Length
308 A	Roads Open to All Vehicles, with Seasonal Designation	April 16 - Nov 30	0.00	0.05
308 B2	Roads Open to All Vehicles, with Seasonal Designation	April 16 - Nov 30	0.00	0.13
311	Roads Open to All Vehicles, with Seasonal Designation	April 16 - Nov 30	1.00	6.40
318	Roads Open to All Vehicles, with Seasonal Designation	April 16 - Nov 30	2.58	3.58
329	Roads Open to All Vehicles, with Seasonal Designation	April 16 - Nov 30	2.70	3.84
375	Roads Open to All Vehicles, with Seasonal Designation	April 16 - Nov 30	4.40	6.63
376	Roads Open to All Vehicles, with Seasonal Designation	April 16 - Nov 30	3.20	3.69
1434	Trails open to vehicles 50" or less in width, with seasonal designation	April 16 - Nov 30	0.00	5.71