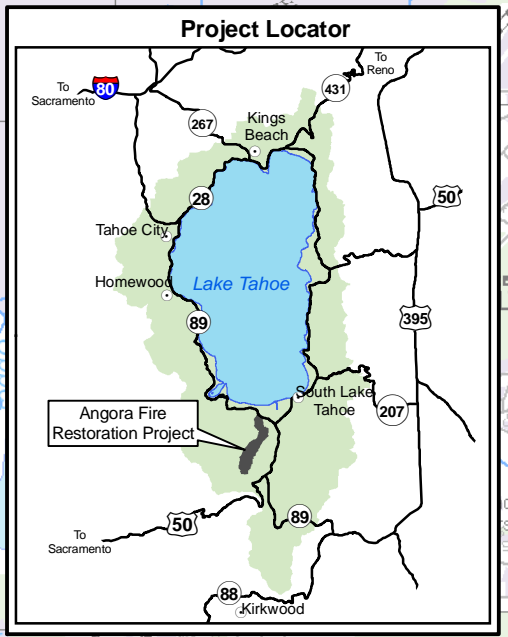
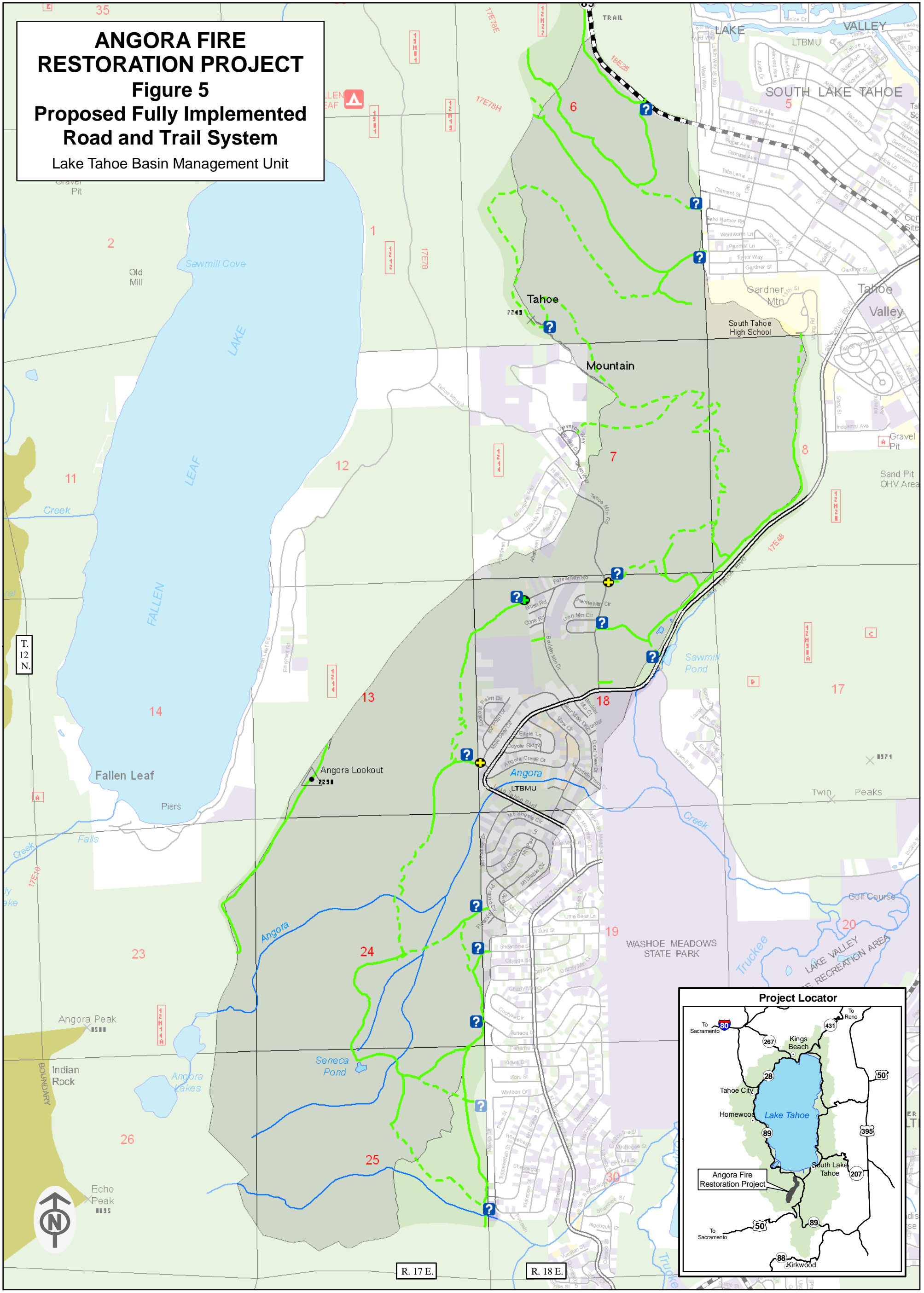


ANGORA FIRE RESTORATION PROJECT

Figure 5

Proposed Fully Implemented Road and Trail System

Lake Tahoe Basin Management Unit



| | | | |
|--|--|---|---|
| <p>National Forest Transportation System</p> <ul style="list-style-type: none"> — Classified Road — National Forest Highway - - - Classified Trail <p>Proposed Gate/Structure</p> <ul style="list-style-type: none"> + Gate + Gate with Access Control Fence | <p>Angora Fire Restoration Project Area</p> <ul style="list-style-type: none"> ■ Project Area ? Wayfinding Signage <p>Transportation System - Other</p> <ul style="list-style-type: none"> — Highway — Arterial Local — Local Road | <p>Land Status</p> <ul style="list-style-type: none"> ■ USFS - LTBMU ■ USFS Wilderness ■ State ■ County ■ Other Gov't Entity ○ Private | <p>Stream</p> <ul style="list-style-type: none"> — Stream — Waterbody |
|--|--|---|---|

0 0.25 0.5 1
Miles

Landlines are Approximate

For more information, contact: Lake Tahoe Basin Management Unit
35 College Drive, South Lake Tahoe, CA 96150
(530) 543-2600 (530) 541-4036 TTY

USDA U.S. Forest Service

Map by LTBMU GIS Staff 02/05/2009