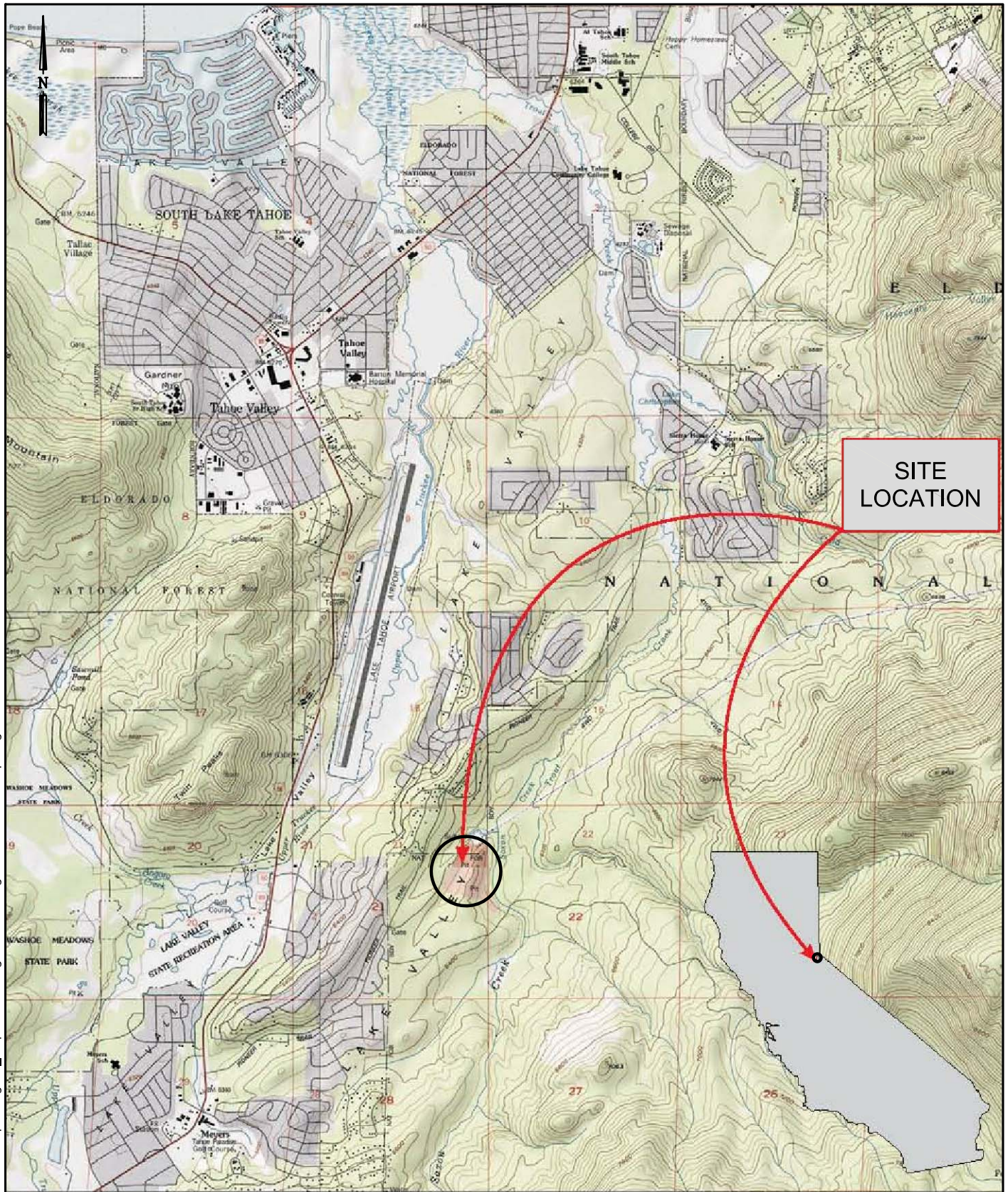
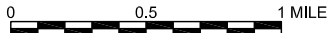


Figures



**SITE
LOCATION**

APPROXIMATE SCALE



SOURCE: WESTON SOLUTIONS, FIG 1-1



**Engineering/Remediation
Resources Group, Inc.**
115 Sansome Street, Suite 200
San Francisco, CA 94104
(415) 395-9974

CLIENT:
FOREST SERVICE

DESIGNED BY:
VZC 12-1-08

CHECKED BY:
EB 12/1/08

LOCATION:
**MEYERS LANDFILL
EL DORADO COUNTY, CA**

P.E.P.G.:
CG 12/1/08

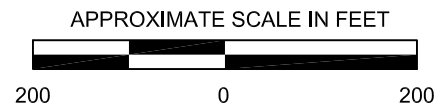
SITE LOCATION MAP

ERRG PROJECT NO.	REV. NO.	SHEET	OF	FIG NO.
28-072	0	1	1	1

P:\2008_Projects\28-072 Meyers LF Cap Design\N_Maps & Drawings\100% Design\Existing Site Feature.Dwg



SOURCE: WESTON SOLUTIONS FIGURE 2-1



NO.	DATE	REVISIONS	APP'D	DATE

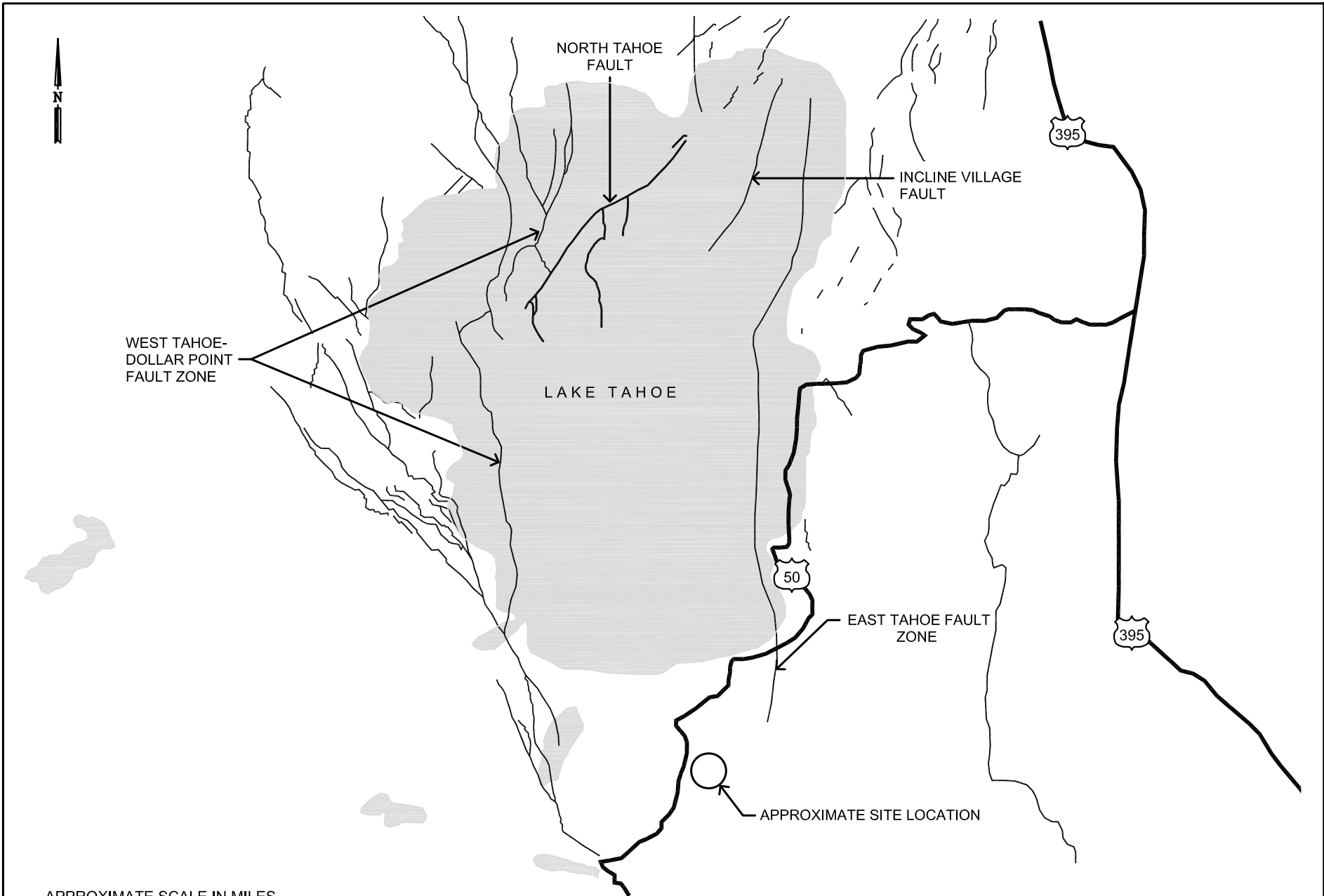
ERRG Engineering/Remediation Resources Group, Inc.
 115 Sansome Street, Suite 200
 San Francisco, CA 94104
 (415) 395-9974

CLIENT: FOREST SERVICE
 LOCATION: MEYERS LANDFILL EL DORADO COUNTY, CA

DESIGNED BY: VZC 12-1-08
 CHECKED BY: PDL 12/1/08
 P.E./P.G.: CG 12/1/08

EXISTING SITE FEATURES				
ERRG PROJECT NO.	REV. NO.	SHEET	OF	FIG NO.
28-072	0	1	1	2

P:\2008_Projects\28-072 Meyers LF Cap Design\N_Maps & Drawings\100% Design\Fault Map.dwg



APPROXIMATE SCALE IN MILES



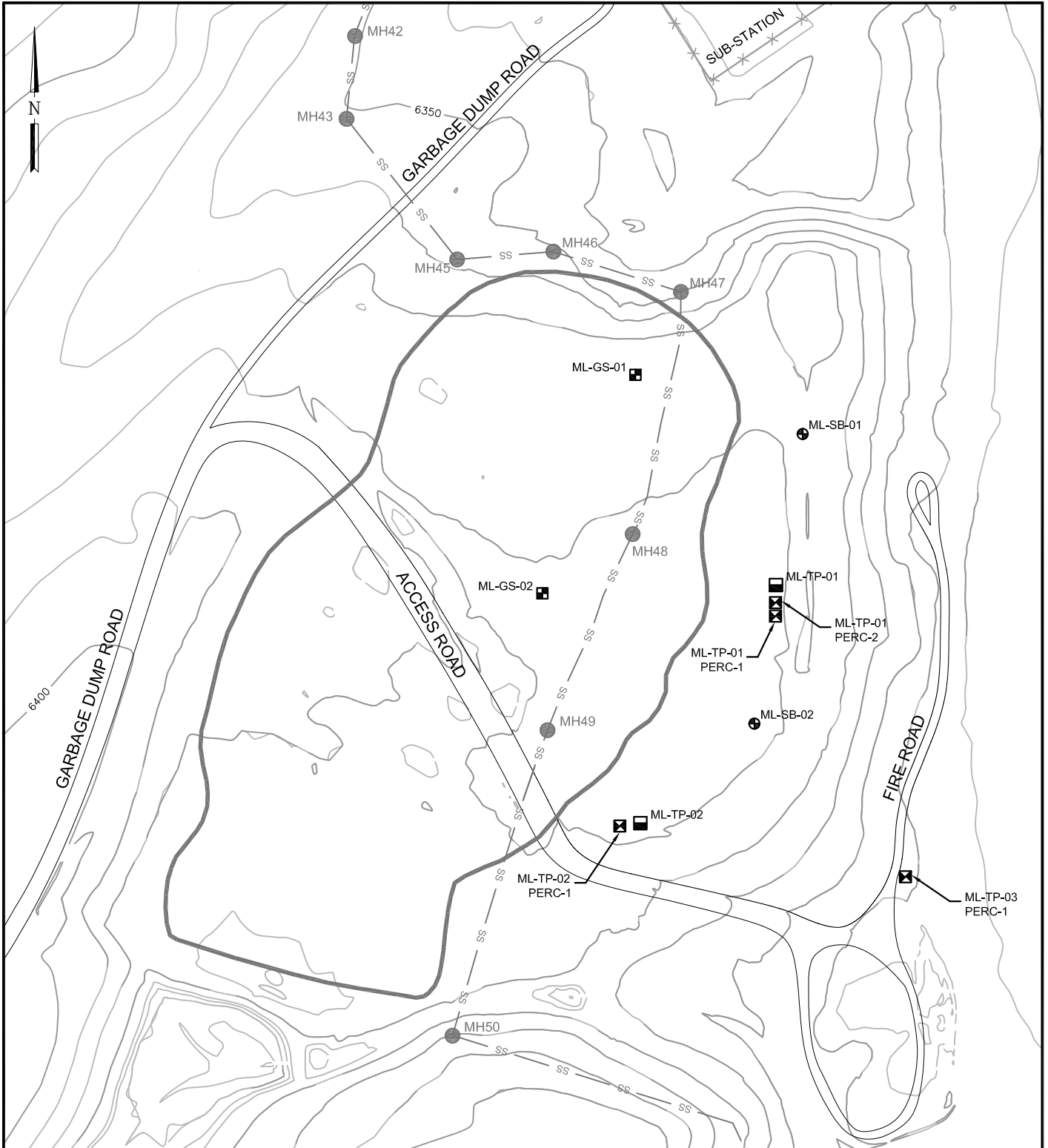
SOURCE: USGS EARTHQUAKE HAZARDS PROGRAM
 QUATERNARY FAULT AND FOLD DATABASE
 INTERACTIVE MAP SERVICE
<http://gldims.cr.usgs.gov/gfault/viewer.htm>,
 Accessed 9-11-2008



Engineering/Remediation
 Resources Group, Inc.
 115 Sansome Street, Suite 200
 San Francisco, CA 94104
 (415) 395-9974

CLIENT: FOREST SERVICE	DESIGNED BY: VZC 12-1-08	FAULT MAP				
	CHECKED BY: JS 12-1-08					
LOCATION: MEYERS LANDFILL EL DORADO COUNTY, CA	P.E.P.G.: CG 12-1-08	ERRG PROJECT NO. 28-072	REV. NO. 0	SHEET 1	OF 1	FIG NO. 3

P:\2008_Projects\28-072 Meyers LF Cap Design\N_Maps&Drawings\100% Design\Field Investigation Sampling Locations.dwg



LEGEND:

- ML-SB-01 BORING LOCATION
- ML-GS-01 EXISTING COVER GRAB SAMPLE LOCATION
- ML-TP-01 TEST PIT LOCATION
- ML-TP-01 PERC-1 PERCOLATION TEST PIT LOCATION
- EXTENT OF WASTE
- SS SEWER LINE
- MH42 MANHOLE LOCATION
- FENCELINE



APPROXIMATE SCALE IN FEET

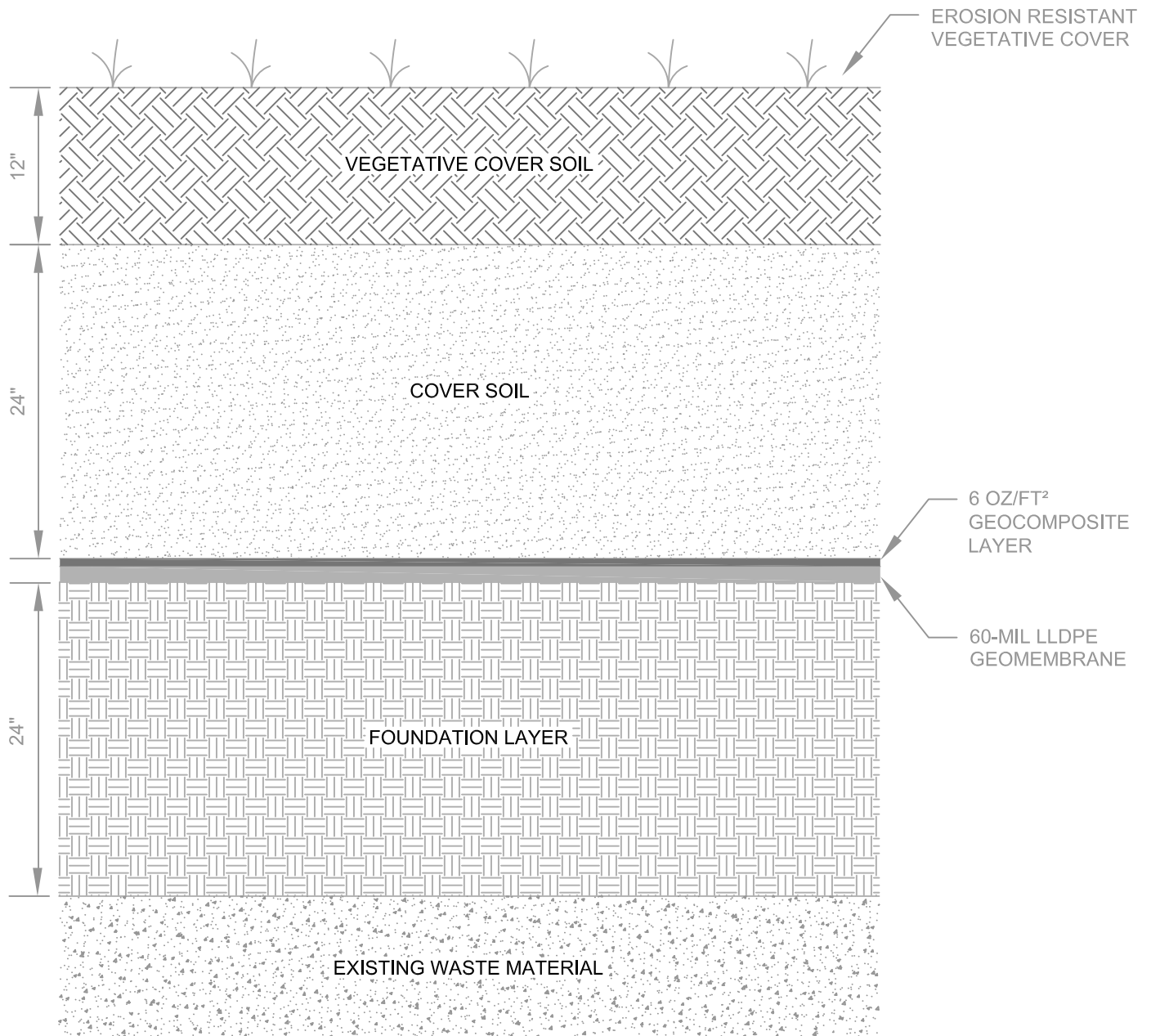
Engineering/Remediation Resources Group, Inc.
 115 Sansome Street, Suite 200
 San Francisco, CA 94104
 (415) 395-9974

<i>CLIENT:</i>	FOREST SERVICE
<i>LOCATION:</i>	MEYERS LANDFILL EL DORADO COUNTY, CA

<i>DESIGNED BY:</i>	VZC 12/1/08
<i>CHECKED BY:</i>	EB 12/1/08
<i>P.E.P.G.:</i>	CG 12/1/08

FIELD INVESTIGATION SAMPLING LOCATIONS				
<i>ERRG PROJECT NO.</i>	<i>REV. NO.</i>	<i>SHEET</i>	<i>OF</i>	<i>FIG NO.</i>
28-072	0	1	1	4

P:\2008_Projects\28-072 Meyers LF Cap Design\N_Maps and Drawings\100% Design\Multilayer Cover Configuration.Dwg



NOTE:

- 1. 12-INCH SAND DRAINAGE LAYER INCLUDED BETWEEN GEOCOMPOSITE AND GEOMEMBRANE LAYERS, WHERE SPECIFIED ON DESIGN DRAWINGS.



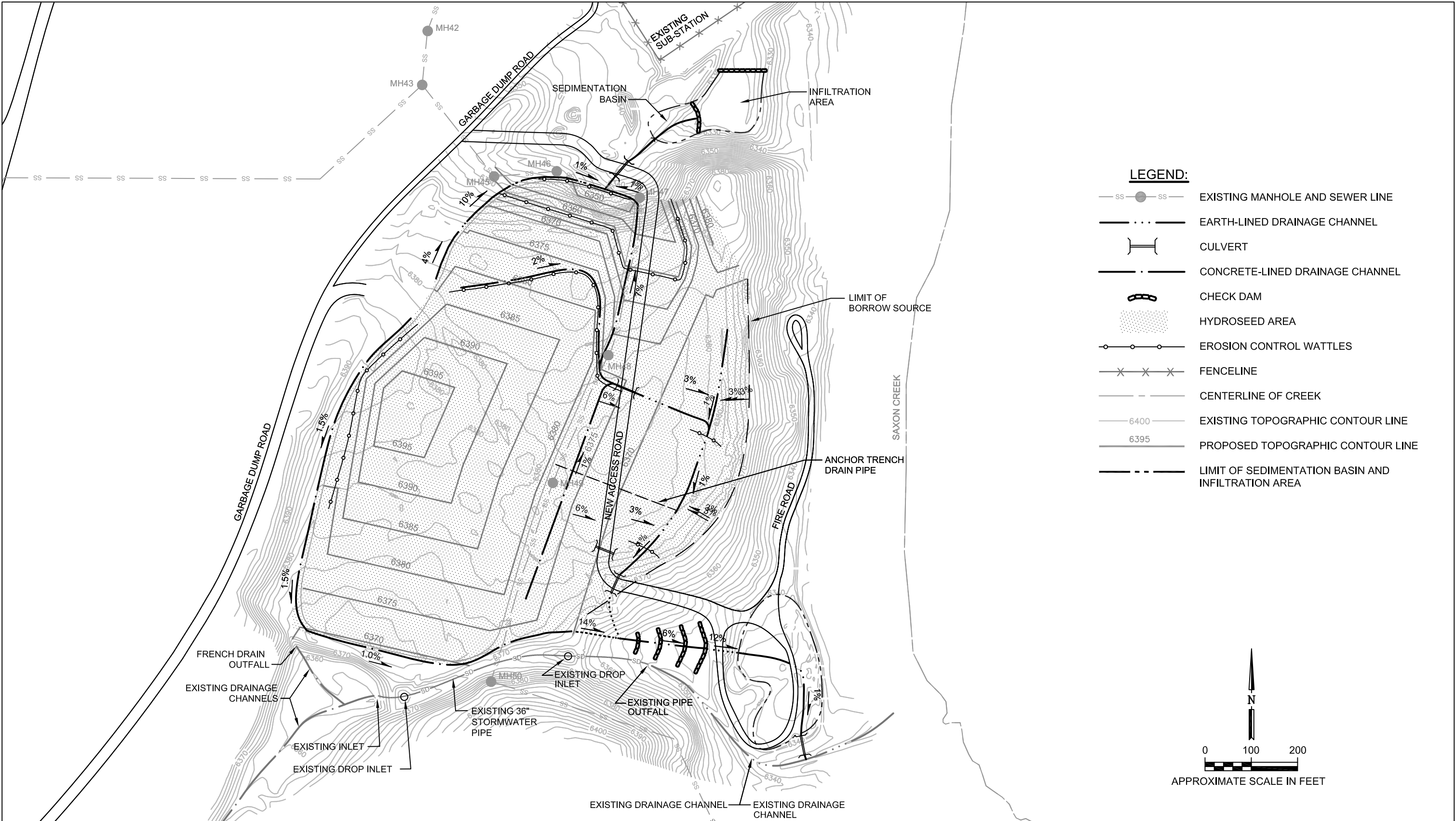
Engineering/Remediation
Resources Group, Inc.
115 Sansome Street, Suite 200
San Francisco, California 94104
(415) 395-9974

CLIENT:	FOREST SERVICE
DESIGNED BY:	VZC 12/1/08
CHECKED BY:	EB 12/1/08
LOCATION:	MEYERS LANDFILL EL DORADO COUNTY, CA
P.E./P.G.:	CG 12/1/08

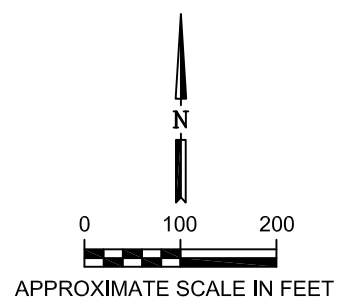
DESIGNED BY:	VZC 12/1/08
CHECKED BY:	EB 12/1/08
P.E./P.G.:	CG 12/1/08

MULTILAYER COVER CONFIGURATION				
ERRG PROJECT NO.	REV. NO.	SHEET	OF	FIGURE
28-072	0	1	1	5

P:\2008_Projects\28-072 Meyers LF Cap Design\N_Maps & Drawings\100% Design\Temporary Erosion Controls.Dwg



- LEGEND:**
- SS —●— SS — EXISTING MANHOLE AND SEWER LINE
 - ··· — EARTH-LINED DRAINAGE CHANNEL
 - () — CULVERT
 - ··· — CONCRETE-LINED DRAINAGE CHANNEL
 - () — CHECK DAM
 - [] — HYDROSEED AREA
 - ○ — EROSION CONTROL WATTLES
 - X X X — FENCELINE
 - - - - — CENTERLINE OF CREEK
 - 6400 — EXISTING TOPOGRAPHIC CONTOUR LINE
 - 6395 — PROPOSED TOPOGRAPHIC CONTOUR LINE
 - - - - — LIMIT OF SEDIMENTATION BASIN AND INFILTRATION AREA



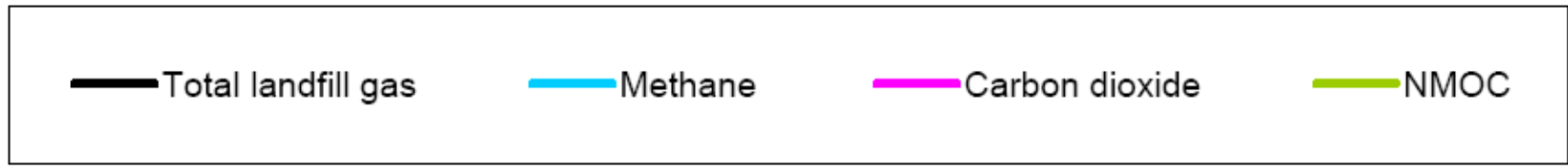
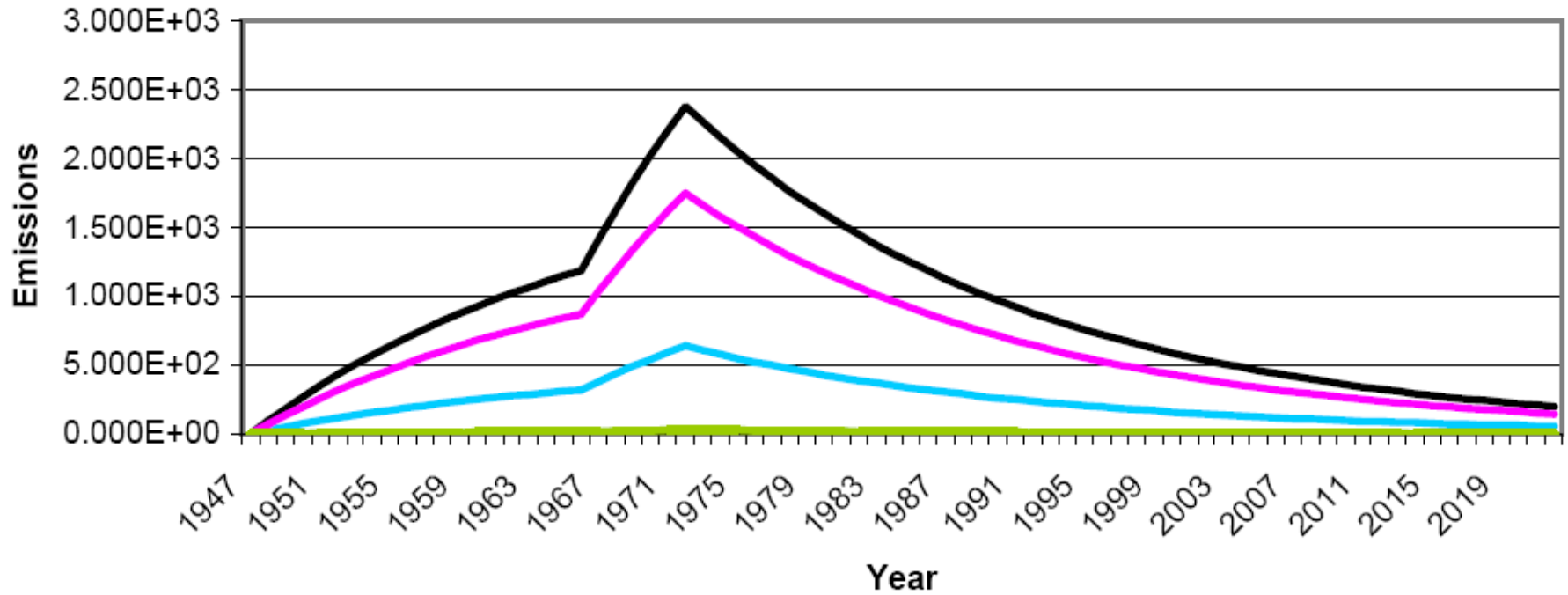
SOURCE:
TOPOGRAPHIC INFORMATION PROVIDED BY FOREST SERVICE;
SURVEY CONDUCTED IN 2006.

NO.	DATE	REVISIONS	APP'D	DATE

ERRG Engineering/Remediation Resources Group, Inc.
115 Sansome Street, Suite 200
San Francisco, CA 94104
(415) 395-9974

CLIENT: FOREST SERVICE	DESIGNED BY: VZC 12/1/08	TEMPORARY EROSION CONTROLS			
LOCATION: MEYERS LANDFILL EL DORADO COUNTY, CA	CHECKED BY: PDL 12/1/08				
P.E.P.G.: DKT 12/1/08	ERRG PROJECT NO. 28-072	REV. NO. 0	SHEET 1	OF 1	FIG NO. 6

Megagrams Per Year



NOTE:
 NMOC - NON-METHANE ORGANIC COMPOUNDS

GRAPH EXTRACTED FROM:
 ARGEN ENVIRONMENTAL, INC., 2005.
 "DRAFT MEYERS LANDFILL GAS
 EXTRACTION TEST REPORT"



ERRG
 Engineering/Remediation
 Resources Group, Inc.
 115 Sansome Street, Suite 200
 San Francisco, CA 94104
 (415) 395-9974

CLIENT: FOREST SERVICE	DESIGNED BY: EB 12-1-08					ANTICIPATED LANDFILL GAS GENERATION				
	CHECKED BY: CG 12-1-08									
LOCATION: MEYERS LANDFILL EL DORADO COUNTY, CA	P.E./P.G.: CG 12-1-08					ERRG PROJECT NO. 28-072	REV. NO. 0	SHEET 1	OF 1	FIG NO. 7