

# **ANGORA FIRE RESTORATION PROJECT**

**U.S. Forest Service  
LAKE TAHOE BASIN MANAGEMENT UNIT**

**Duncan Leao  
Vegetation Management Planner**

**Richard Vacirca  
Forest Aquatics Biologist**

# 3 PHASES OF FIRE REHAB

**Phase I Rehab: Immediate post-fire actions –  
Termed “mop-up”**

**Hand/dozer lines, roads, safety zones, portions of urban lots**

**Phase II Rehab: Burned Area Emergency Rehab (BAER) –  
Erosion control measures – Fall/Winter storm events  
Noxious weed detection surveys**

**Phase III Rehab: Public safety & Long-term restoration  
Angora Hazard Tree Removal Project (urban lots/roads/trails)  
Angora Fire Restoration Project**

# WHY HERE? WHY NOW?

## CONSIDERATIONS:

- **Pre-fire + post-fire conditions influence whether or not we are currently at or will eventually meet desired conditions WITHOUT active management.**
- **Impacts prior to the fire**
  - Roads/trails in SEZs; Stream straightening; Fire suppression affecting fuel loading
- **Impacts post-fire**
  - Loss of vegetation/ground cover to conserve soils
  - Further effects to resources from future fire and/or floods
  - + Increase in water availability
  - + Increase in riparian vegetation

# DESIRED CONDITIONS - EXAMPLES POST-FIRE (> 20 YEARS)

## Fire, Fuels, Vegetation and Forest Management

- Stand conditions in the defense zone are fairly open dominated by large, fire tolerant trees with an overall average fuel loading of < 15 tons/acre.

## Wildlife Habitat

- Maintain sufficient levels of snags and down logs to provide some characteristics of diverse forest habitat.

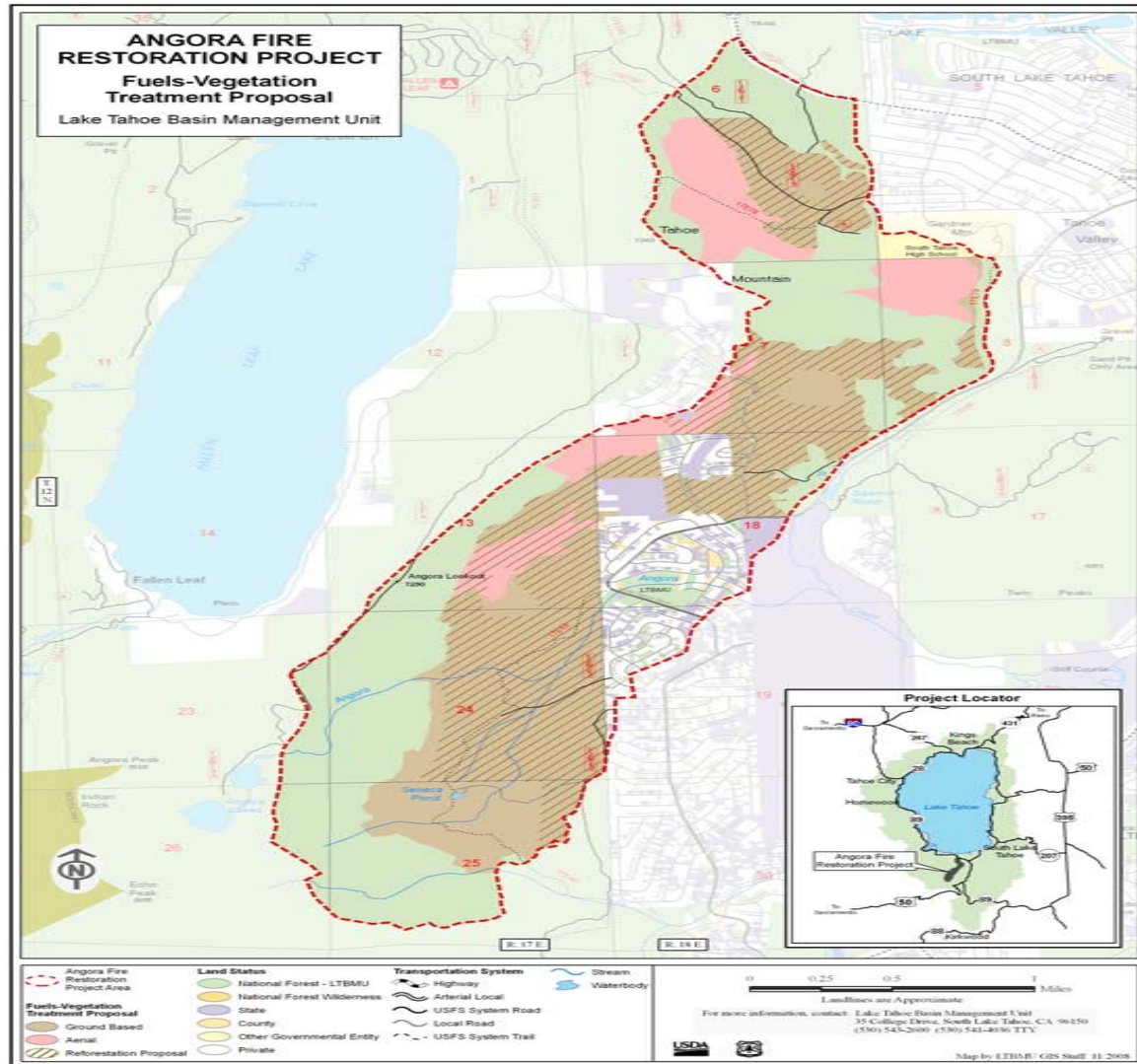
## Watershed and Aquatic

- The connections of floodplains, channels, and water tables distribute flood flows and sustain diverse habitats.

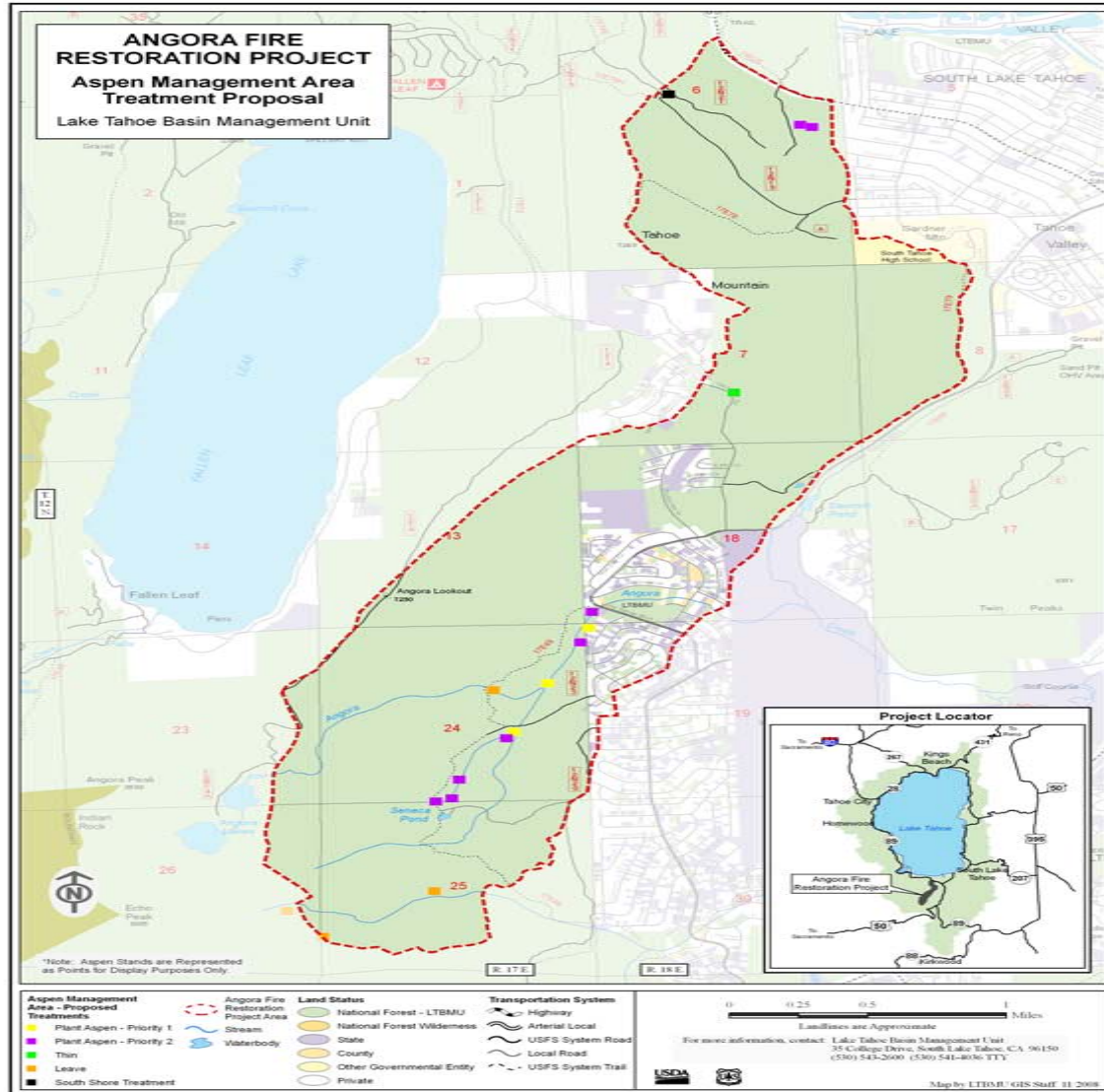
## Roads and Trails

- The transportation system will provide non-motorized public access to the National Forest. Roads and trails retained in the system will be improved to meet Forest Service standards necessary for water quality protection.

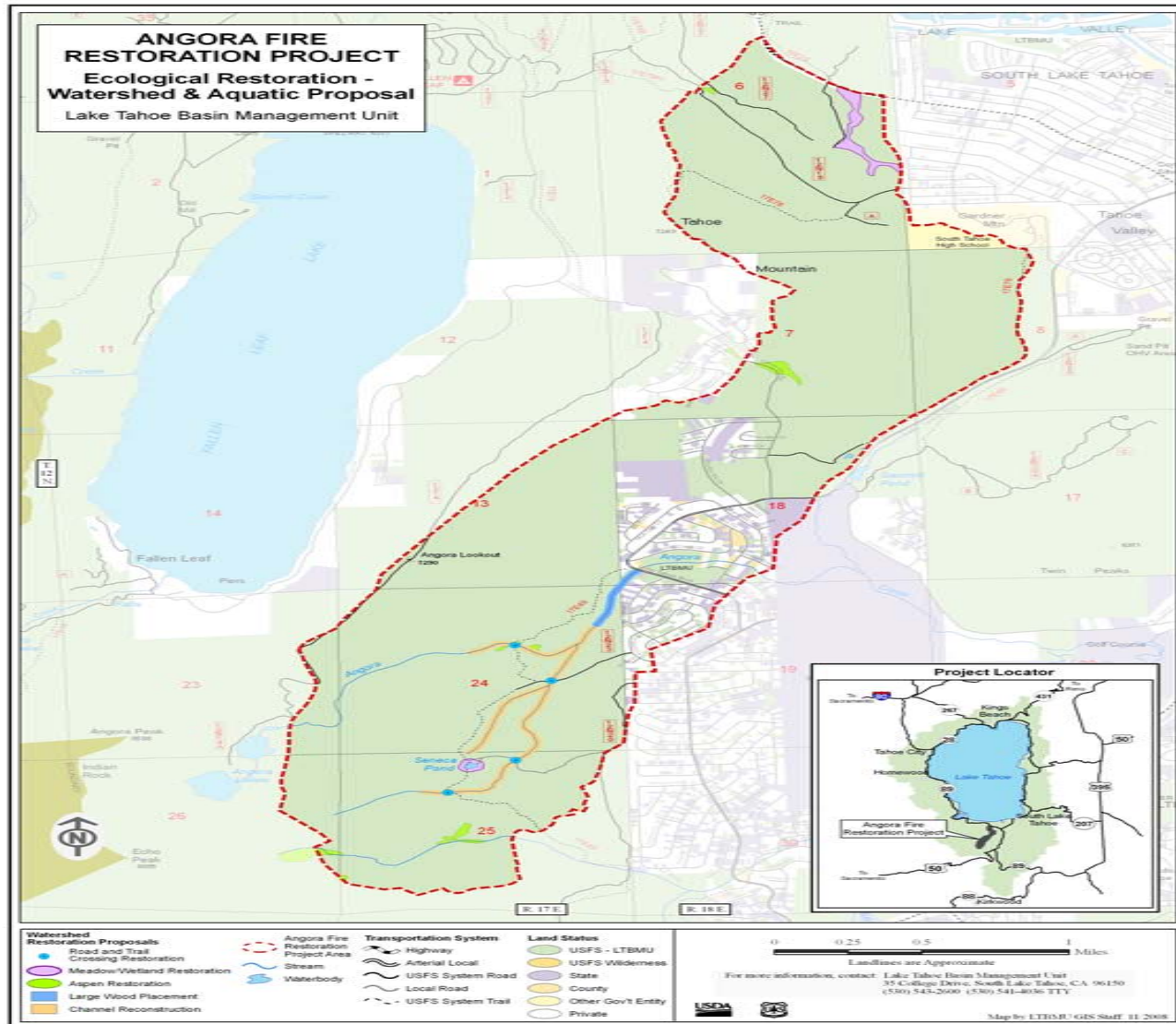
# PROPOSED ACTIONS – VEGETATION/FUELS



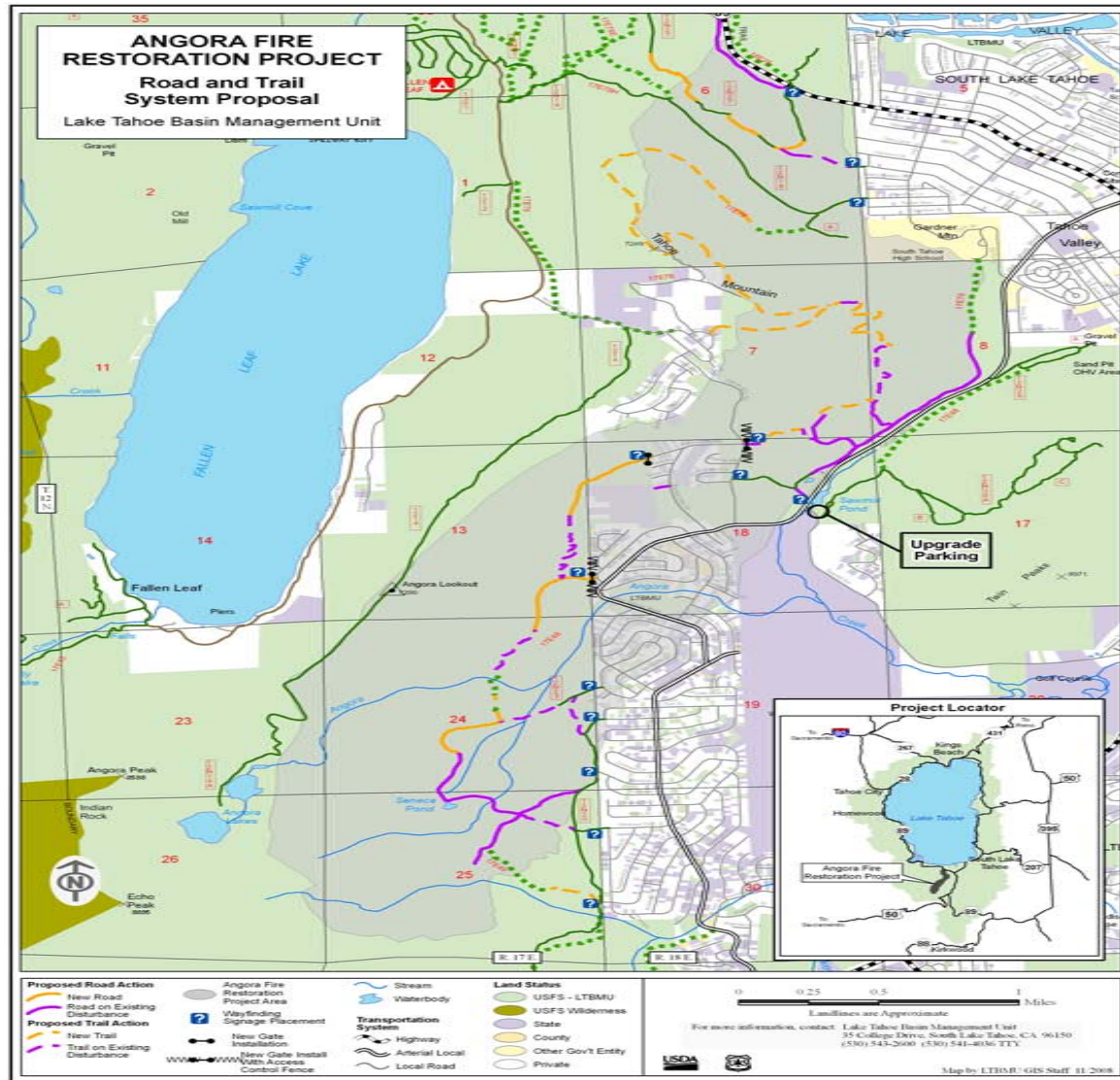
# PROPOSED ACTIONS – ASPEN



# PROPOSED ACTIONS – WATERSHED/AQUATICS



# PROPOSED ACTIONS – ROADS/TRAILS





# **SUMMARY OF PROPOSED ACTIONS**

## **FUELS/FOREST HEALTH**

- **Ground based removal = up to 951 acres**
- **Aerial removal = up to 447 acres**
- **Reforestation = up to 1,100 acres**

## **WILDLIFE HABITAT**

- **Wildlife Habitat Management Zones – project design**
- **Aspen (conifer removal) – 1 stand/< 5 acres**
- **Aspen (planting) – 11 plots/1/4 acre**

## **WATERSHED AND AQUATIC**

- **Channel reconstruction (Angora Creek) - ~1200 feet (0.23 miles)**
- **Large wood placement (Angora Creek + Tribs) - ~ 2 miles**
- **Gardner Mountain Meadow – 13 acres/~ 1500 feet (est.)**
- **Wetland complex (Seneca Pond) – 5-10 acres (est.)**

# **SUMMARY OF PROPOSED ACTIONS CONT....**

## **ROADS AND TRAILS**

- **System roads – upgrades = BMPs, move out of SEZs, decommission, etc.**
- **Non-system roads – upgrades = decommission, reconstruct + adopt**
- **Trails – new construction, reroute + BMPs on existing, decommission, way-finding signage**

## **NOXIOUS WEEDS**

- **Manuel treatment methods (bull thistle) – 15 – 30 acres (est.)**